

# Photo Album for Falmouth Fire Rescue, MA Job 29603 May 20, 2016

This week the cab was nearing completion in paint.

The pump house and body side panels began fabrication. Next week the cab is scheduled to begin on the cab line where cab related content is added. The chassis may begin assembly. The pump should be installed in the pump house. The body panels should be joined in fabrication.



DSC02678



DSC02679



DSC02680



DSC02681





DSC02682



DSC00876

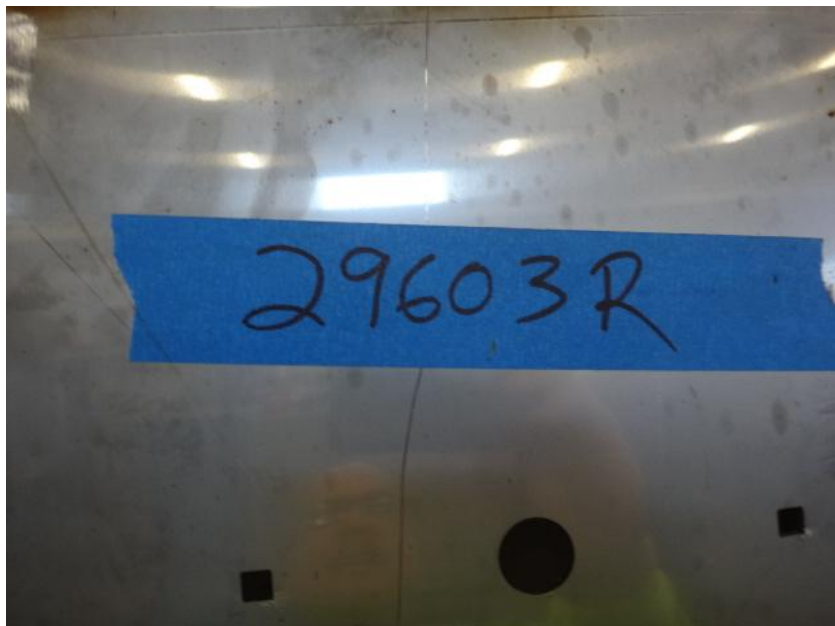


DSC00877



DSC00878





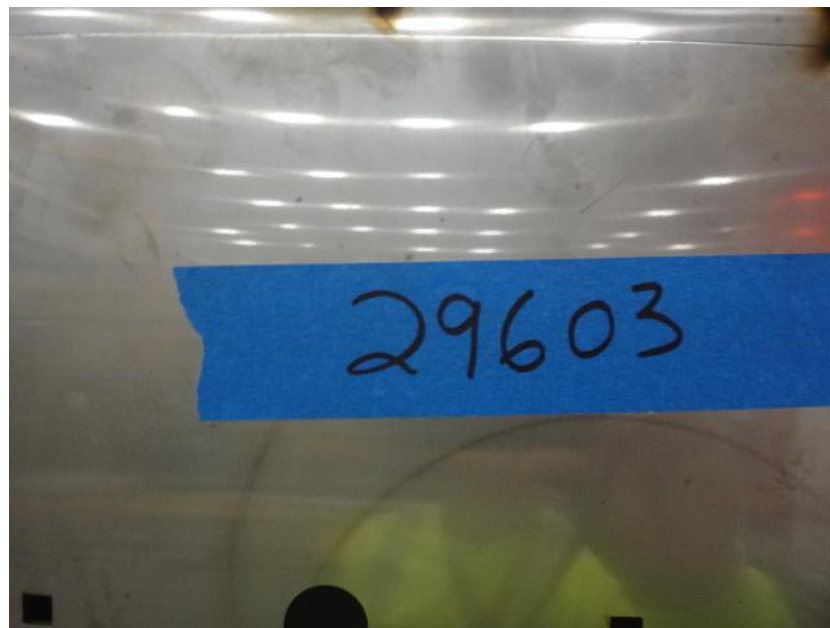
DSC00838



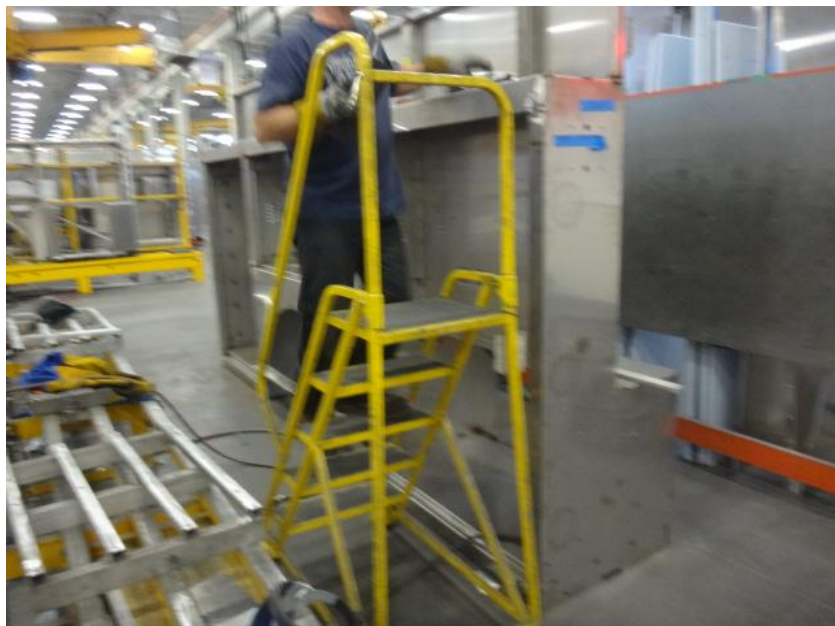
DSC00839



DSC00840



DSC00844



DSC00845



DSC00846