

Photo Album for Essex, VT

Job # 30387

W/O # 21019282

February 17, 2017

Your new Pierce apparatus is now in production at the Bradenton, FL facility. The chassis has arrived and is staged to begin the cab painting process and the main fire pump arrived. This week the pump house structure was fabricated and the lower body modules began weld-up and fabrication. Next week the chassis could begin cab painting. The fire pump and pump house structure will remain in staging and the lower body should finish with fabrication.

| QUALITY SYSTEM FORM | | QSF10-0836 | |
|---|-----------------|--------------------------|----------|
| Title: Window Sheet | | Effective Date: 12/01/14 | |
| | | Page 1 of 1 | |
| #: | 21019282 | Job #: | 30387 |
| Color: | 90RED | Top Color: (Two Tone) | 101BLACK |
| #: | HJ172312 | | |
| Customer: | Essex Fire Dept | | |
| Contract Manager: | Rob Wilkey | | |
| Order Date: | | | |
| Work Number: | 21019704 | | |
| | CONFIGURATION | | |
| <input type="checkbox"/> PUMPER <input checked="" type="checkbox"/> TANKER <input type="checkbox"/> RESPONDER | | | |

Paint at
PIERCE

DSC06703



DSC06704



DSC06705



DSC06706



DSC06707



DSC06708



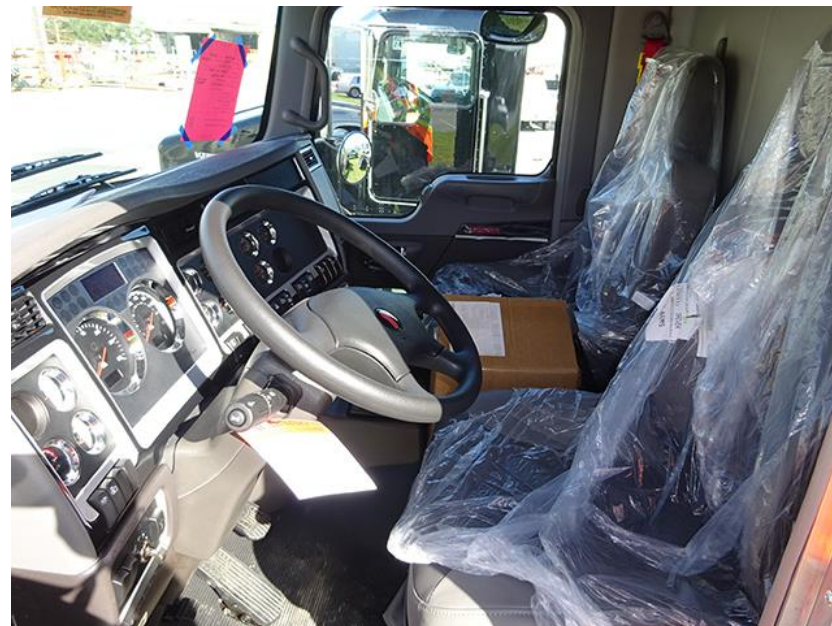
DSC06709



DSC06710



DSC06711



DSC06712



DSC06713



DSC06714



DSC06715



DSC06716



DSC06717



DSC06718



DSC06719



DSC06720



DSC06721



DSC06722



DSC06723



DSC06724



DSC06725



DSC06726



DSC06727



DSC06728



DSC06729



DSC06730



DSC06731



DSC06732



DSC06733



DSC06734



DSC06735



DSC06736



DSC06737



DSC06738



DSC06739



DSC06740



DSC06741



DSC07192



DSC07193



DSC07194



DSC07195



DSC07196



DSC07197