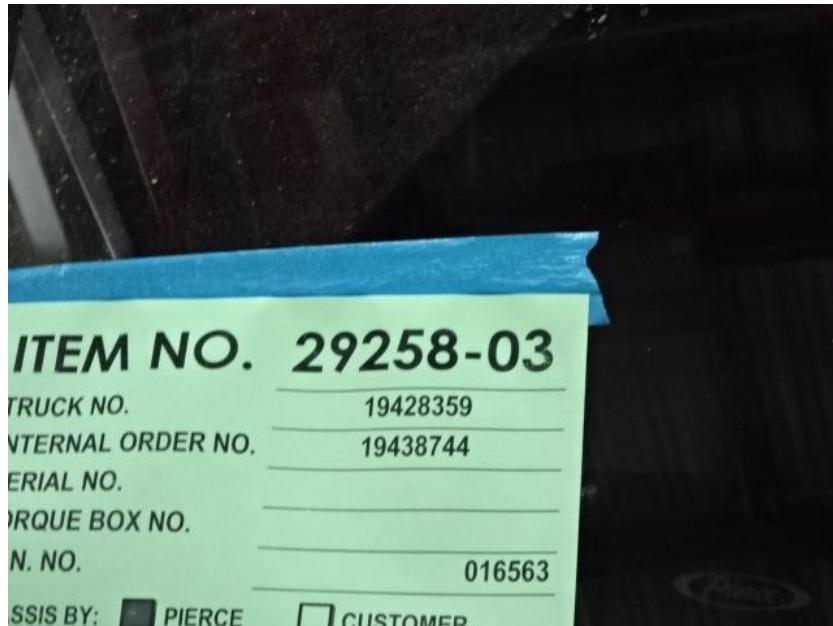


Photo Album for Carver, MA Job 29258-03 April 22, 2016

This week your apparatus finished on the main assembly line and continued in an off line area to finish the majority of assembly. In the next few days your apparatus should be released to alignment and road testing. Next week your apparatus should finish initial testing and is scheduled to return to the line where reflective striping and/or remaining content is added.



DSC07680



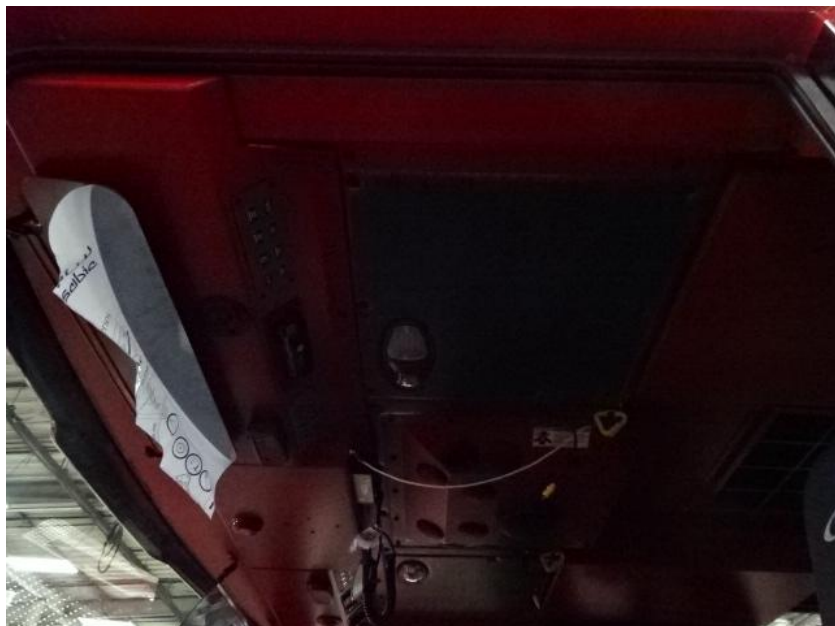
DSC07681



DSC07682



DSC07683



DSC07684



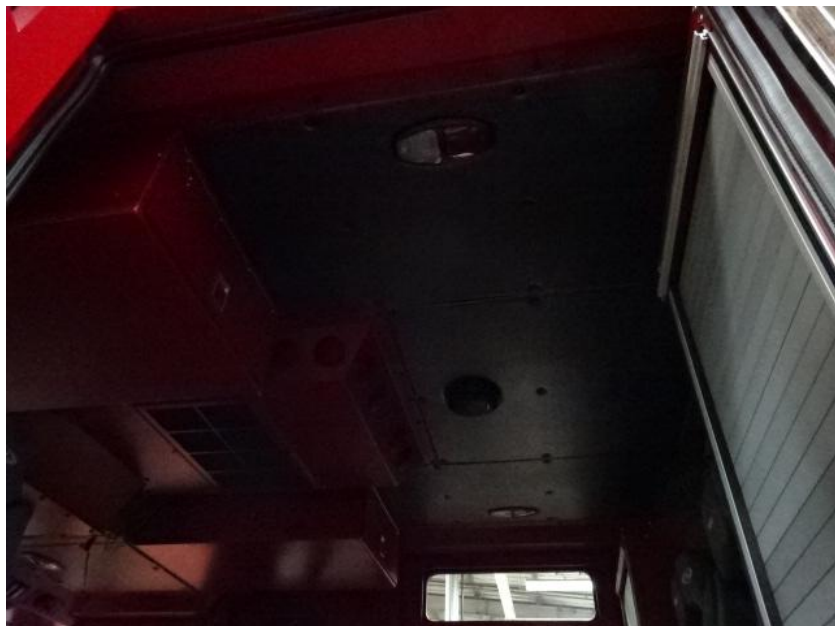
DSC07685



DSC07686



DSC07687



DSC07688



DSC07689



DSC07690



DSC07691



DSC07692



DSC07693



DSC07694



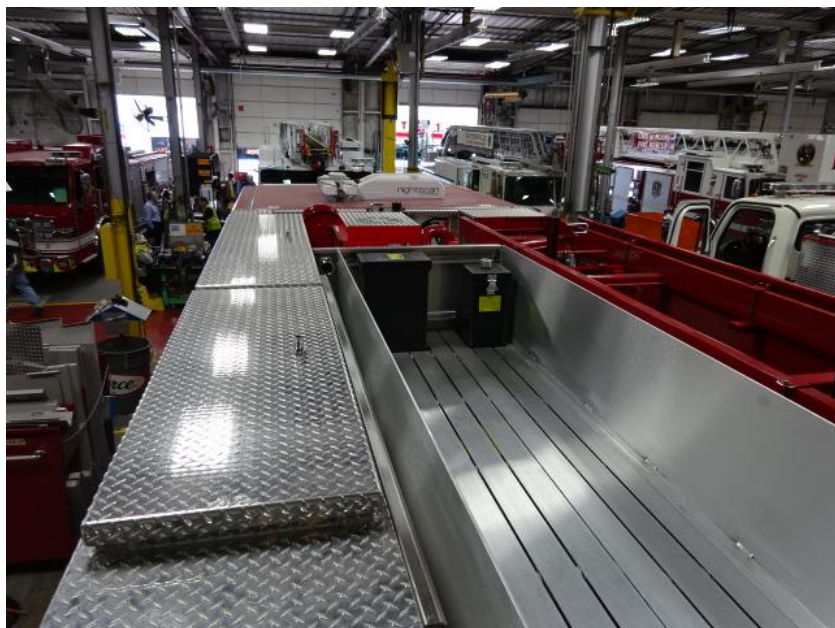
DSC07695



DSC07696



DSC07697



DSC07698



DSC07699



DSC07700



DSC07701



DSC07702



DSC07703



DSC07704



DSC07705



DSC07706



DSC07707



DSC07708



DSC07709



DSC07710



DSC07711



DSC07712



DSC07713