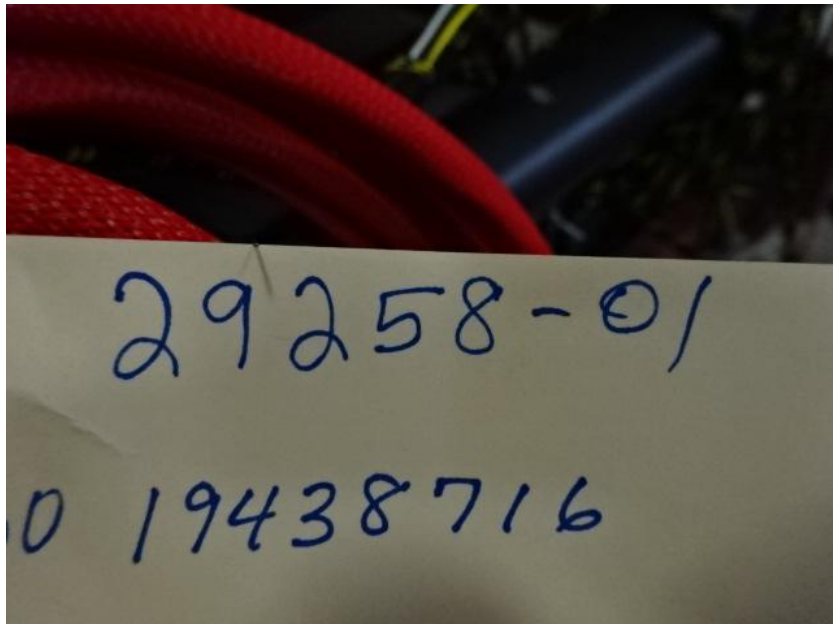


# Photo Album for Carver, MA Job 29258-01 March 11, 2016

This week the cab began on the cab line where cab related content is added while the chassis began assembly. The plumbing was installed when body panels were joined in fabrication. Next week the cab and chassis should be nearing completion in assembly. The pump should arrive and have valves installed. The body should begin the paint process.





DSC08152



DSC08153



DSC08154



DSC08155





DSC08156



DSC02460



DSC02461



DSC02462





DSC02463



DSC02464



DSC02465



DSC02466





DSC02467



DSC02468



DSC02469



DSC02470

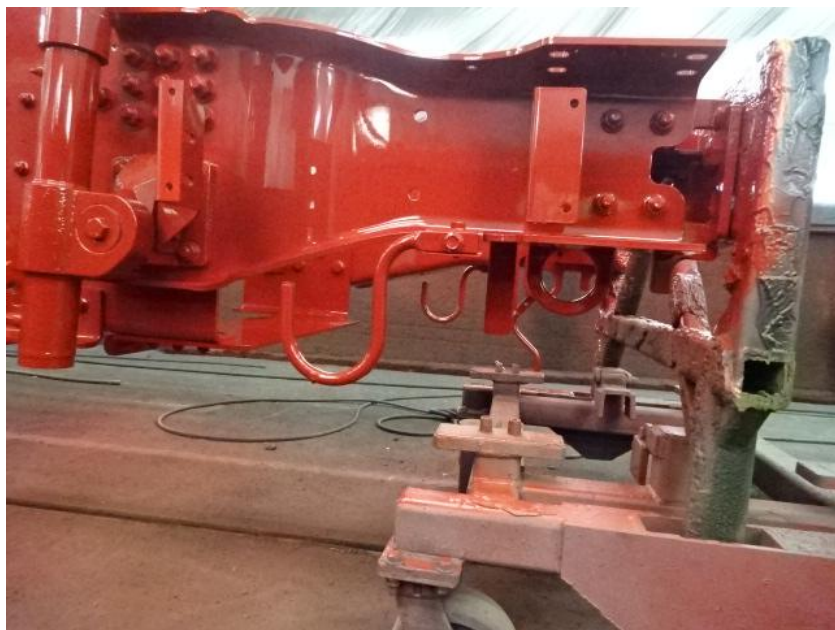




DSC02471



DSC02472



DSC02473



DSC02474





DSC02281



DSC02282



DSC02283



DSC02284





DSC02285



DSC02286



DSC02287



DSC02288





DSC02289