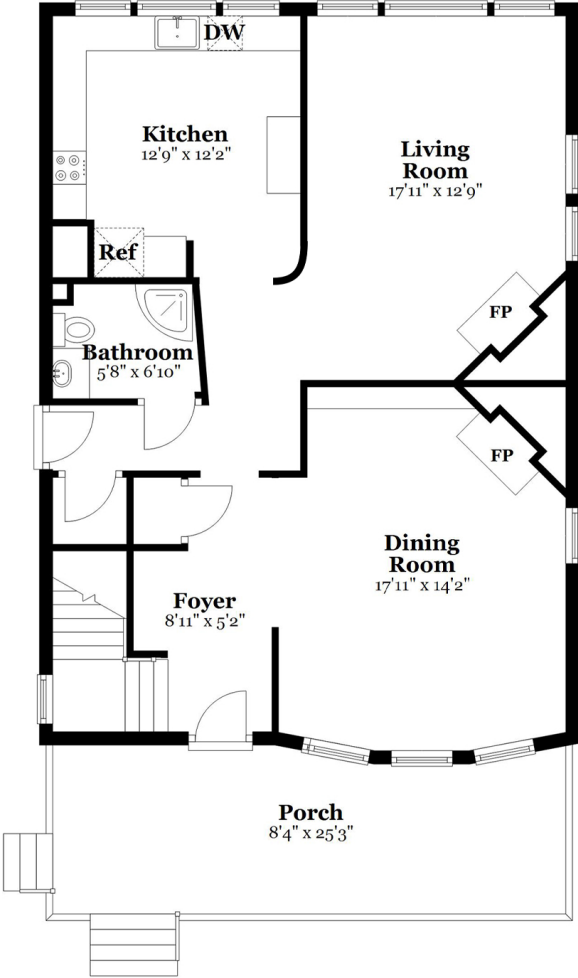


14 Thoreau Street, Concord, MA

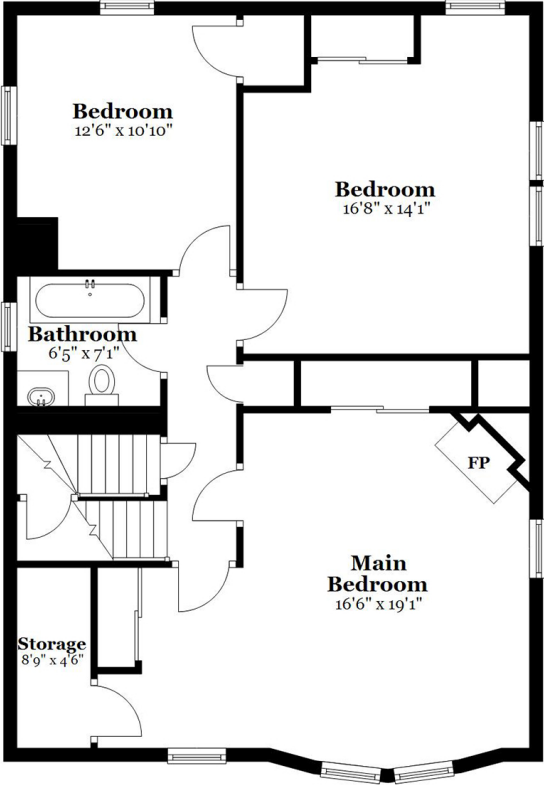
First Floor - 8'4" Ceilings

Approx. 896.1 sq. feet



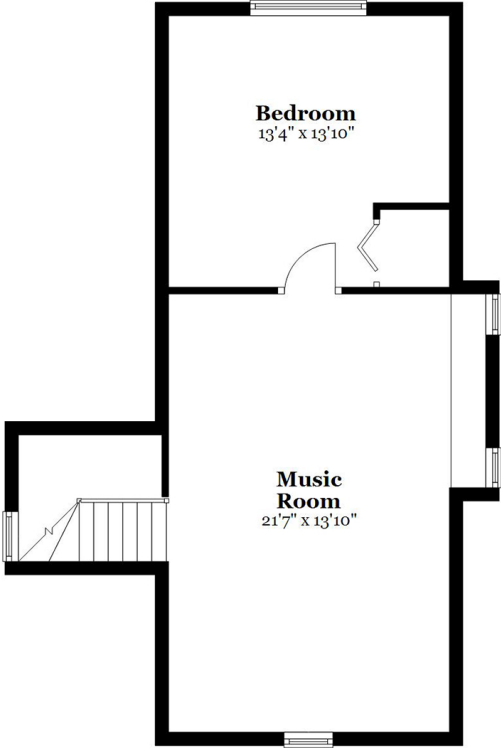
Second Floor - 7'10" Ceilings

Approx. 911.3 sq. feet



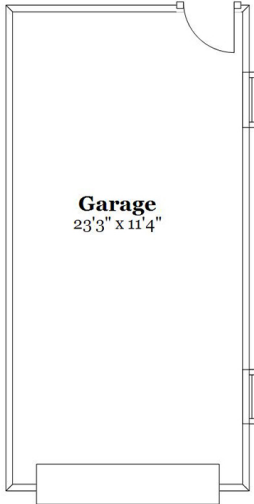
Third Floor - 7' Ceilings

Approx. 551.2 sq. feet



Outbuildings

Approx. 0.0 sq. feet



Plans are illustrative only. Dimensions, square footages, elevations and details may vary from the floor plans provided.