

Field Service Bulletin: S3u/y Series 3 Seat Collar Replacement

Doc number: 1140.0014.01 Rev 02

FRU Kit number: 8800.0098.01 Rev 01

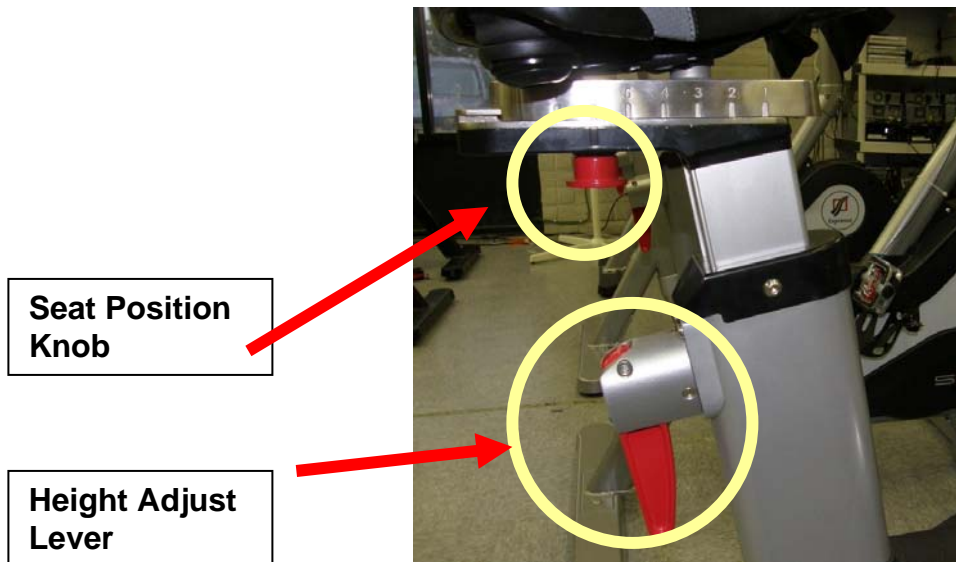
Date: 11/02/11

1 Parts & Equipment List

1.1 The following parts and equipment are required to perform the seat collar replacement:

- 2 piece seat collar (inner and outer pieces) with screw
- Lower stabilizer ‘spring’
- Bottom plastic ‘end cap’ with 3 screws
- 2.5mm Allen Wrench
- 4mm Allen Wrench
- Towels or rags

2 Seat Post Removal



2.1 Remove the seat assembly completely from the seat post by fully pulling down on the red seat position knob.

2.2 Lower the seat post to its lowest position using the height adjust lever.



2.3 Remove the two (2) screws holding the plastic seat collar to the frame using the 4mm Allen wrench. Set the screws aside for re-use.



1 screw each side

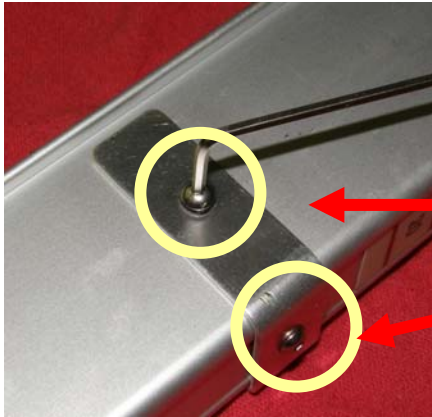
2.4 Lift the seat height adjust level to upper position and pull the seat post out of the bike frame. Note that the seat post will have grease on the bottom plastic. Place the seat post on a towel or rag. NOTE: If a shim is installed in the bike it must be removed before the seat post can be removed from the frame.

2.5 Remove the three (3) screws holding the bottom plastic to the seat post using the 4mm Allen wrench. Discard bottom plastic and screws – they will not be reused.



3 screws

2.6 Remove the three screws holding the bracket on the seat post using the 2.5mm Allen wrench. Discard bracket but set aside screws for re-use



3 screws (1 on opposite side)

2.7 Slide old seat collar off seat post and discard.



**Keep 3 screws for reuse.
Discard plastic parts and metal bracket**

3 Pre-Installation Inspection

- 3.1 Place the new seat collar inner piece on the bike frame. Verify that it fits snugly on the frame without excessive force required to install. This piece is designed for a wide variation in seat tubes, and the parts have been pre-trimmed to accommodate most frames, but some adjustment may be necessary. Carefully sand/trim the front fingers to minimize any binding that requires the piece to be forced into place. Contact IFH Customer Service for further support & details.

Trim fingers as needed



- 3.2 Fit the outer collar piece on to the seat post and inner piece. Inspect and verify that the two holes in the collar line up with the holes in the frame. The collar holes may be opened up slightly as needed to ensure that the screws can be installed properly.



4 Collar Installation

- 4.1 Slide the new outer collar piece on to the seat post
- 4.2 Slide the new inner collar piece on to the seat post.
- 4.3 Install the new plastic stabilizer piece where the old bracket was with its three (3) screws using the 2.5mm Allen wrench.
- 4.4 Install the new bottom plastic with its three (3) screws using the 4mm Allen wrench.
- 4.5 Apply grease to the bottom plastic as needed.



**New Outer
Collar Piece**

**New Inner
Collar Piece**

**New Stabilizer
Piece**

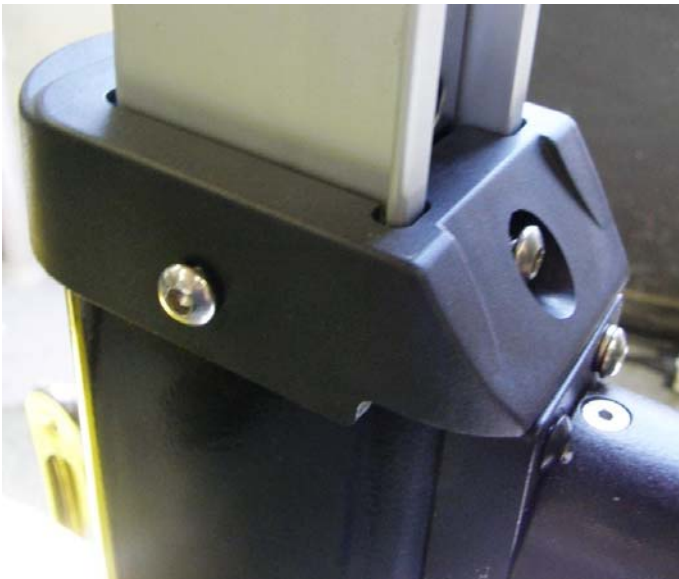
New bottom end cap

5 Seat Post Assembly Installation

- 5.1 Partially insert the seat post assembly into the frame.
- 5.2 Slide the inner collar piece down the seat post until it has been fully inserted into the frame.



- 5.3 Slide the outer collar piece into place over the inner piece and the frame. Loosely install the two side screws and the rear screw and verify smooth operation of the seat post.



- 5.4 Tighten the three collar screws snugly, but do not overtighten.