

Field Service Bulletin: S3u/y Seat Collar Replacement

Doc number: 1140.0011.01

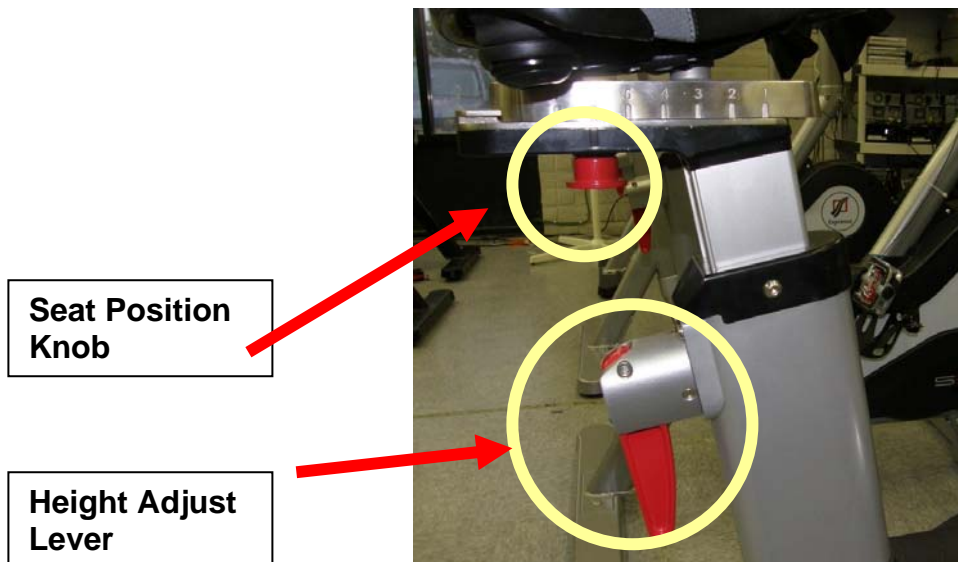
Date: 04/13/11

1 Parts & Equipment List

1.1 The following parts and equipment are required to perform the seat collar replacement:

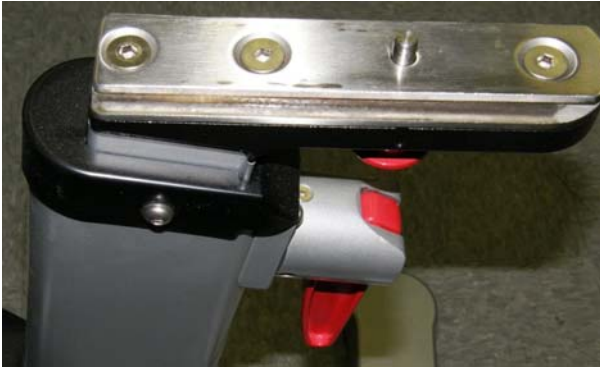
- Seat Collar
- Seat Plate
- 1 piece of Aluminum tape
- 2.5mm Allen Wrench
- 4mm Allen Wrench
- Towels or rags

2 Seat Post Removal



2.1 Remove the seat assembly completely from the seat post by fully pulling down on the red seat position knob.

2.2 Lower the seat post to its lowest position using the height adjust lever.



2.3 Remove the two (2) screws holding the plastic seat collar to the frame using the 4mm Allen wrench. Set the screws aside for re-use.



1 screw each side

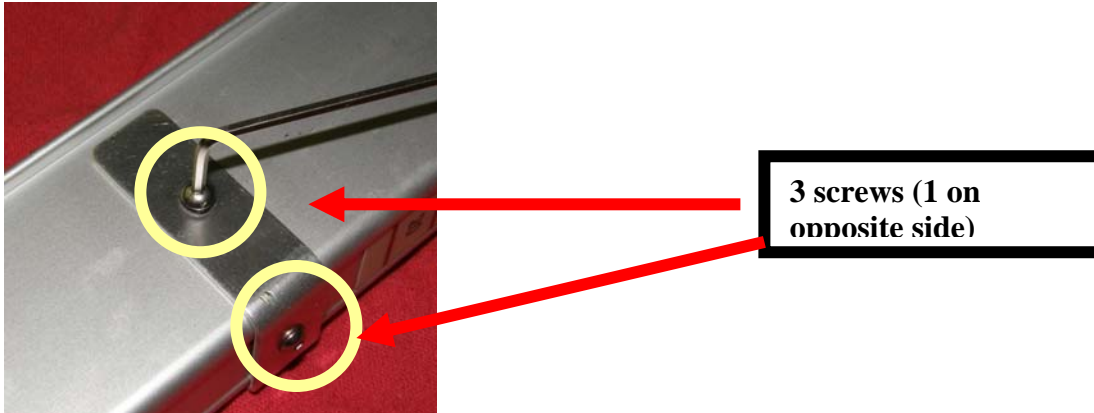
2.4 Lift the seat height adjust level to upper position and pull the seat post out of the bike frame. Note that the seat post will have grease on the bottom plastic. Place the seat post on a towel or rag.

2.5 Remove the three (3) screws holding the bottom plastic to the seat post using the 4mm Allen wrench. Set aside plastic and screws for re-use.



3 screws

- 2.6 Remove the three screws holding the bracket on the seat post using the 2.5mm Allen wrench. Set aside plastic and screws for re-use.



- 2.7 Slide old seat collar off seat post and discard after new collar installation is completed



3 Pre-Installation Inspection

- 3.1 Place the new seat collar on the bike frame. Verify that it fits snugly on the frame without excessive force required to install. If the collar must be forced onto the frame, try to determine where the binding occurs and make a slight adjustment to ease the binding. Contact IFH Customer Service for further support & details at support@ifholdings.com and/or calling us at 1-888-528-8589 x2
- 3.2 Inspect and verify that the two holes in the collar line up with the holes in the frame. The collar holes may be opened up slightly as needed to ensure that the screws can be installed properly.



4 Collar Installation

- 4.1 Slide the new collar on to the seat post
- 4.2 Install the bracket with its three (3) screws using the 2.5mm Allen wrench.
- 4.3 Install the bottom plastic with its three (3) screws using the 4mm Allen wrench.

5 Seat Plate and Seat Post Assembly Installation

5.1 Position the seat post on the old seat collar as shown.



5.2 Remove the backing of the tape and affix the upper portion to the seat post just below the fourth hole.



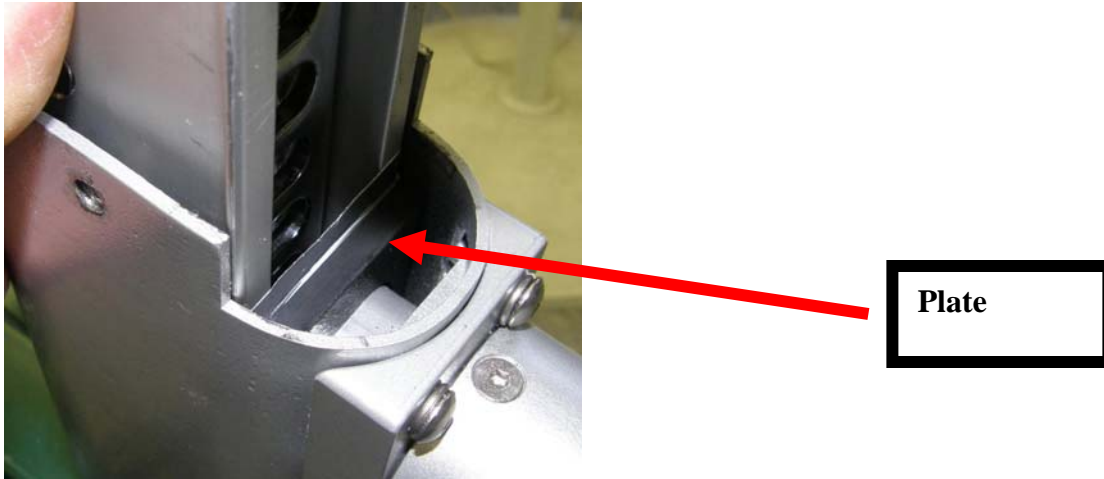
5.3 Fold the bottom portion up and gently attach the seat plate. The seat plate is installed so the widest portion is against the seat post.



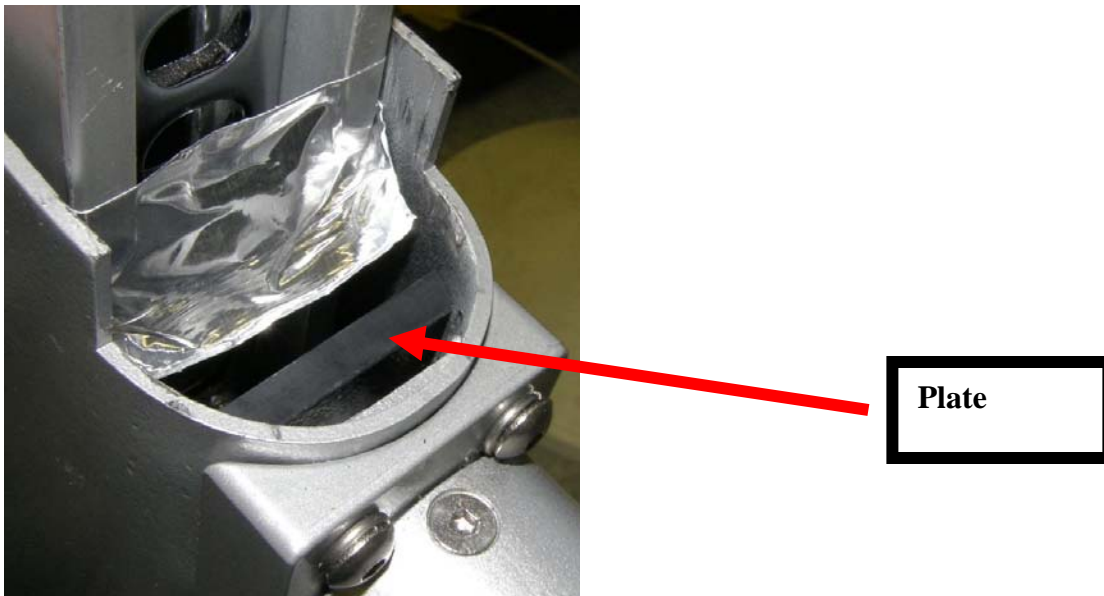
5.4 Lift the seat height adjust lever and slide the seat post down into the frame.



5.5 Slide the seat post back so that the plate is installed on the seat post lever.



5.6 Carefully pull the seat post away from the plate and separate the tape from the plate. The plate should stay on the seat lever assembly.



5.7 Remove the tape from the seat post.

5.8 Loosely install the two (2) collar screws into the frame and verify smooth operation of the seat post.

5.9 Tighten the collar screws snugly and you now the installation is completed.