

## How to Copy Map Data Files

Use the following information to copy map data files to your Android or iOS device.

### Overview

- Installing Map Data on iOS
- Installing Map Data on Android
- Verifying Map Data

### Installing Map Data on iOS

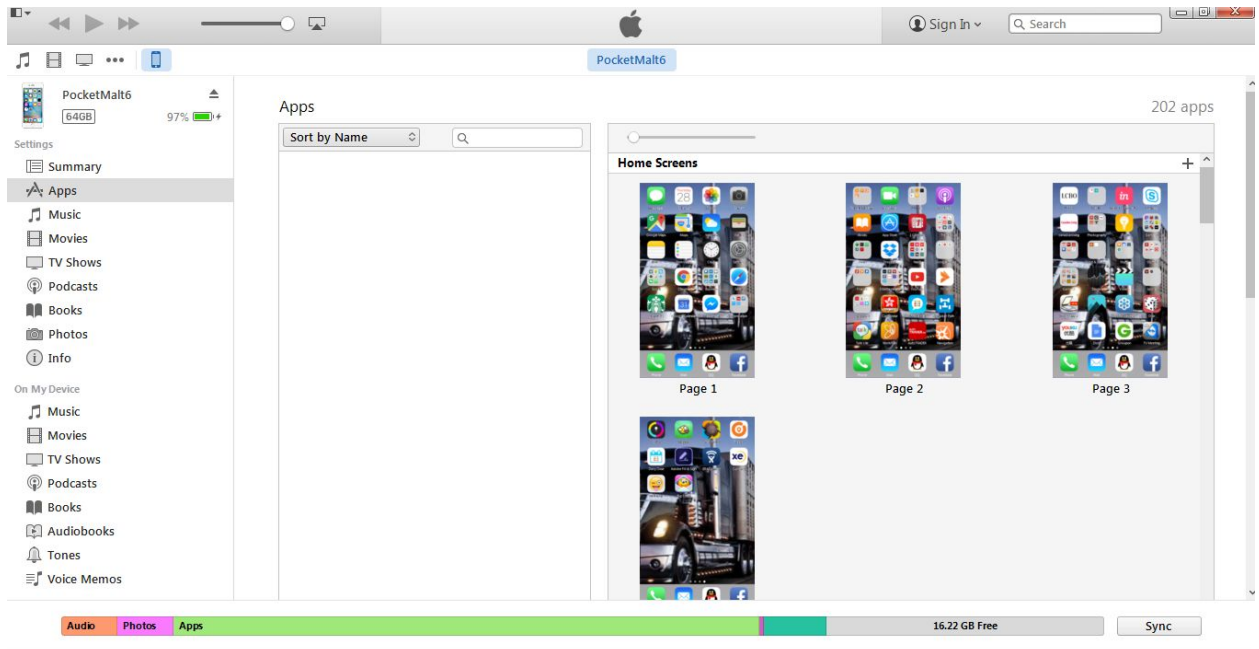
#### Requirements

- Mac or PC with itunes
- iOS device with the Navigation by Verizon Connect app installed
- Verizon Connect map data downloaded on Mac/PC

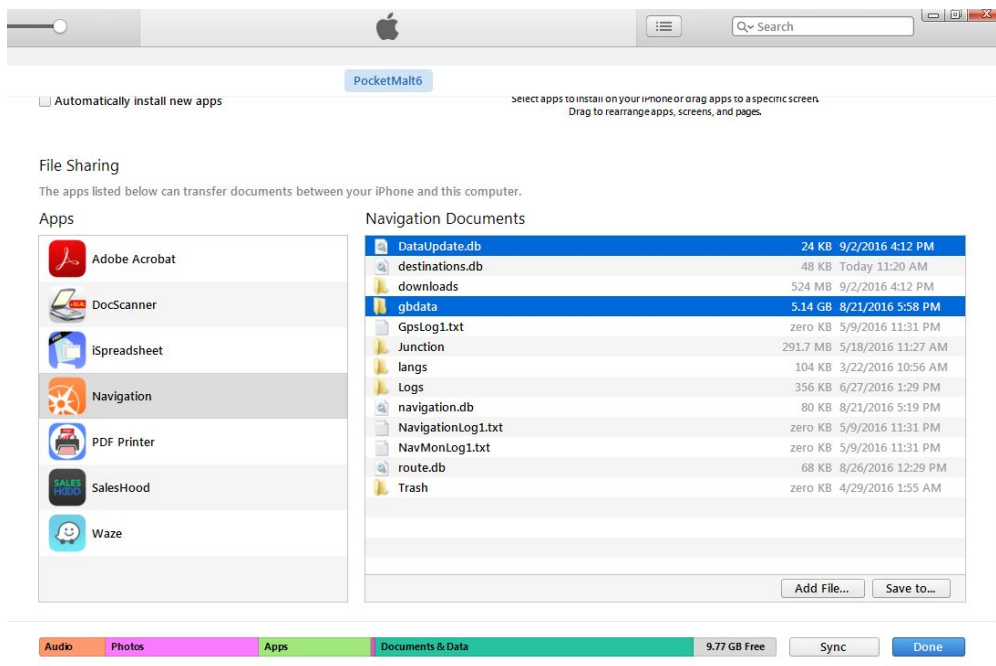
#### Installing Data onto Your Master iOS Device

1. Connect your master iOS device to iTunes on your computer.
2. In itunes select your device.

- In the navigation bar, under **Settings**, select **Apps**.



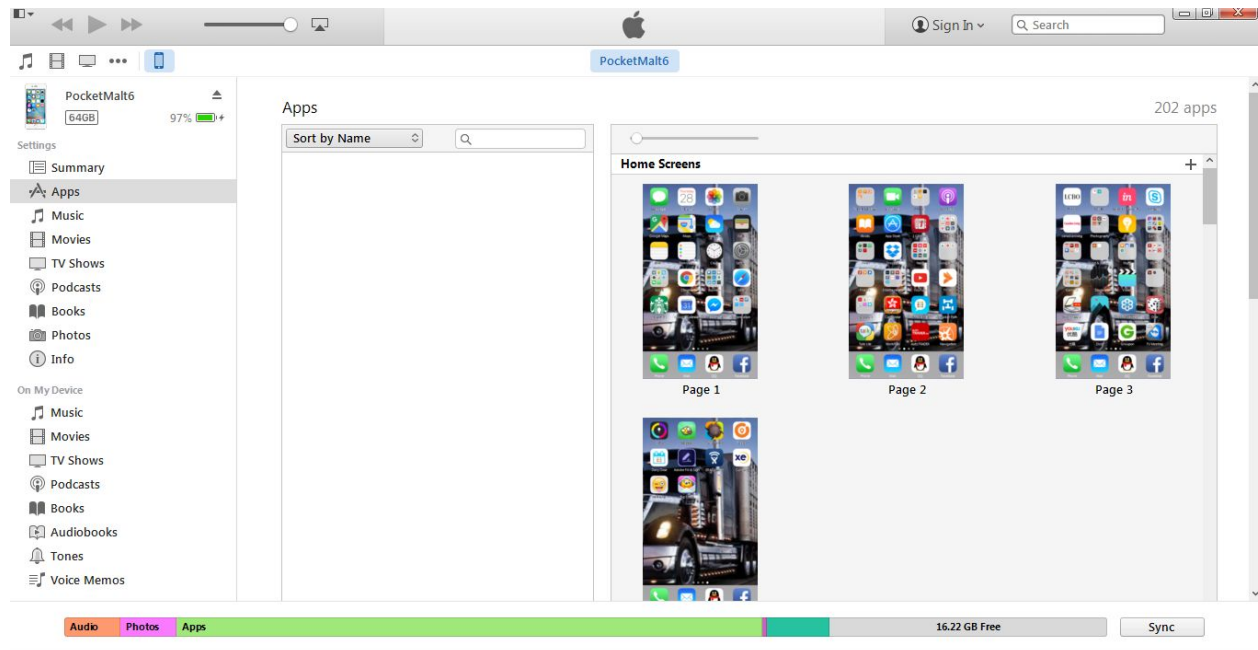
- Find and select the app **Navigation**.
- In **Navigation Documents**, select the folder **gbdata** and the file **DataUpdate.db**.



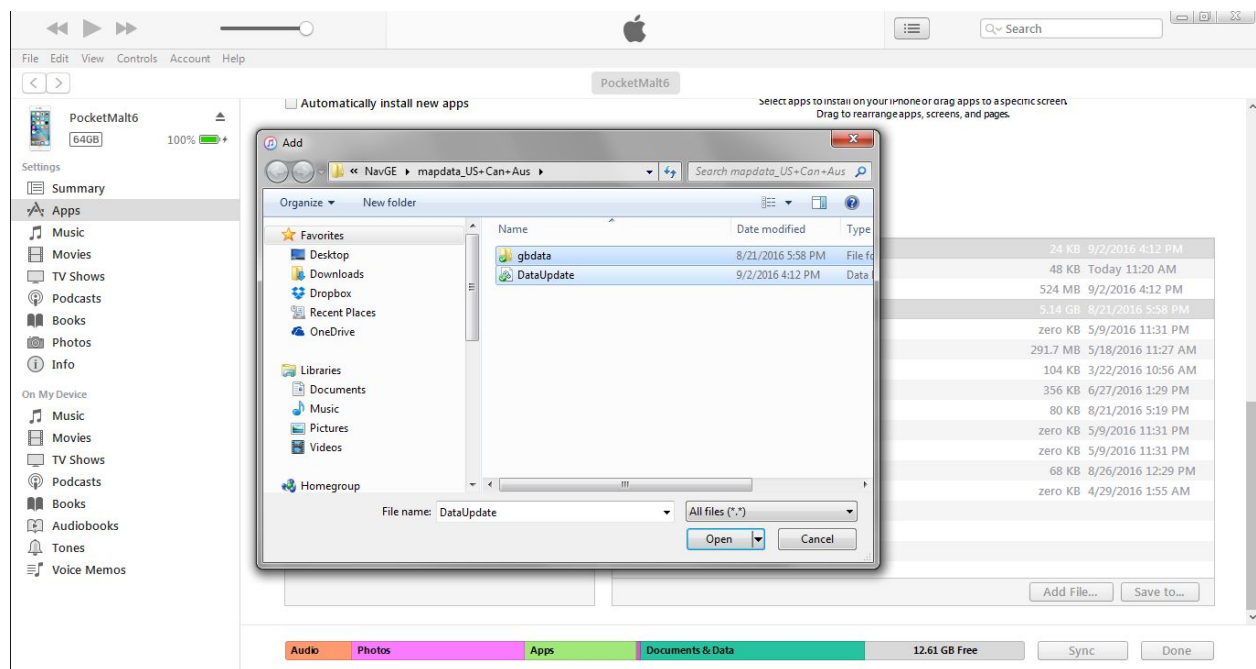
- Click **Save to...**
- Locate the folder **gbdata** on your computer and click **Select Folder**.
- iTunes saves the data to the computer.
- Eject the master device and verify that the data has been successfully added.

## Installing Data onto a Target iOS Device

1. Connect your target iOS device to iTunes on your computer.
2. In iTunes select your device.
3. In the navigation bar, under **Settings**, select **Apps**.




4. Find and select the app Navigation.
5. Click **Add Folder...** or **Add File...**. On a PC press the **Shift** key to see the **Add Folder...** button.
6. Locate the folder and file on the computer and click **Open**. Select the folder **gbdata** folder and file **DataUpdate.db**.



7. Click the **Open**, **Select folder**, or **File...** button.
8. iTunes saves the data to the device.
9. Eject the device and verify that the data has been successfully added.


## Installing Map Data on Android

### Copying Map Data Files to Master Device/PC for PC/MDM Distribution

1. Install Navigation by Verizon Connect from the Playstore.
2. Sign in to Navigation using your driver credentials.
3. Download map data, by tapping **Menu**  > **Map Data** and selecting the following data files from the **All Maps** tab:
  - a. US East/West (as required)
  - b. World Junction Views
  - c. World Cities and Borders
4. Connect your device to MDM or a PC.
5. From the folder `Android/data/com.telogis.nav6/files` select the following directories and files:
  - a. Junction
  - b. gbdata
  - c. DataUpdate.db

6. For each target device use the PC or MDM to install the Navigation APK and the files listed above.

### Copying Map Data Files to Your PC

1. Install Navigation by Verizon Connect onto a master device from the Playstore.
2. Sign in to Navigation using your driver credentials.
3. Download map data, by tapping **Menu**  > **Map Data** and selecting the following data files from the **All Maps** tab:
  - a. US East/West (as needed)
  - b. World Junction Views
  - c. World Cities and Borders
4. Connect your master device to a PC using USB.
5. From the folder `Android/data/com.telogis.nav6/files` select the following folders and files, and copy them to a PC directory:
  - a. Junction
  - b. gbdata
  - c. DataUpdate.db

### Copying Map Data Files From a PC to a Target Device

1. Connect your target device to a PC using USB.
2. Open an Explorer window to the folder with the map data.
3. Open another Explorer window to the folder `Android/data/com.telogis.nav6/files` for your device.
4. Drag the following folders and files from the map data folder to the device folder:
  - a. Junction
  - b. gbdata
  - c. DataUpdate.db
5. Open Navigation and check that the map data is present.

### Copying Map Data files using ADB push

Fresh installation process

- Requires Navigation by Verizon Connect installed on an Android device
- Requires adb installed on your PC

- For adb shell and adb push refer to:  
<http://adbshell.com/commands/adb-push>

### Installation

- Copy the APK file onto your android device and run it to install the app.
- Use `adb push` to push the following folders onto the Android device:  

```
adb push DataUpdate.db  
/device/InternalStorage/Android/data/com.telogis.nav6/files/  
adb push gbdata /sdcard/Android/data/com.telogis.nav6/files/  
adb push Junctions/  
/sdcard/Android/data/com.telogis.nav6/files/
```
- Sign in to Navigation using your driver credentials.
- You should not be taken to the data installation or prompted to add data.
- The map should be visible (if GPS locates your device in the USA or Canada).

### Updating Existing Installation with new Map Data files using ADB push



#### Data update process for existing installations

1. Force stop the Navigation app.
2. Delete the gbdata and Junctions folders from  

```
/sdcard/Android/data/com.telogis.nav6/files.
```
3. Use `adb push` to push the following folders onto the Android device:  

```
adb push DataUpdate.db  
/device/InternalStorage/Android/data/com.telogis.nav6/files/  
adb push gbdata  
/device/InternalStorage/Android/data/com.telogis.nav6/files/  
adb push Junctions/  
/device/InternalStorage/Android/data/com.telogis.nav6/files/
```
4. Restart Navigation.

### Verifying Map Data

1. Tap **Menu**  > **Map Data**.
2. Select **On This Device** to view the list of installed maps. Downloaded data sets have a check mark beside them.
3. Tap **Menu**  > **Map**.

4. Check that your local area appears on the map.