

210002FinalSitePlan

©2011
 CODY/BRAUN & ASSOCIATES, INC.
 ALL RIGHTS RESERVED

planners
 architects
CODY/BRAUN & ASSOCIATES, INC.
 1892 MARNE ROAD • BOLINGBROOK, IL 60490 • 630-771-1898



SITE PLAN - NEW CONSTRUCTION
 PARK IMPROVEMENTS AT DENING PARK FOR:
THE PARK DISTRICT OF LA GRANGE
 4103 GILBERT AVENUE - LA GRANGE, IL

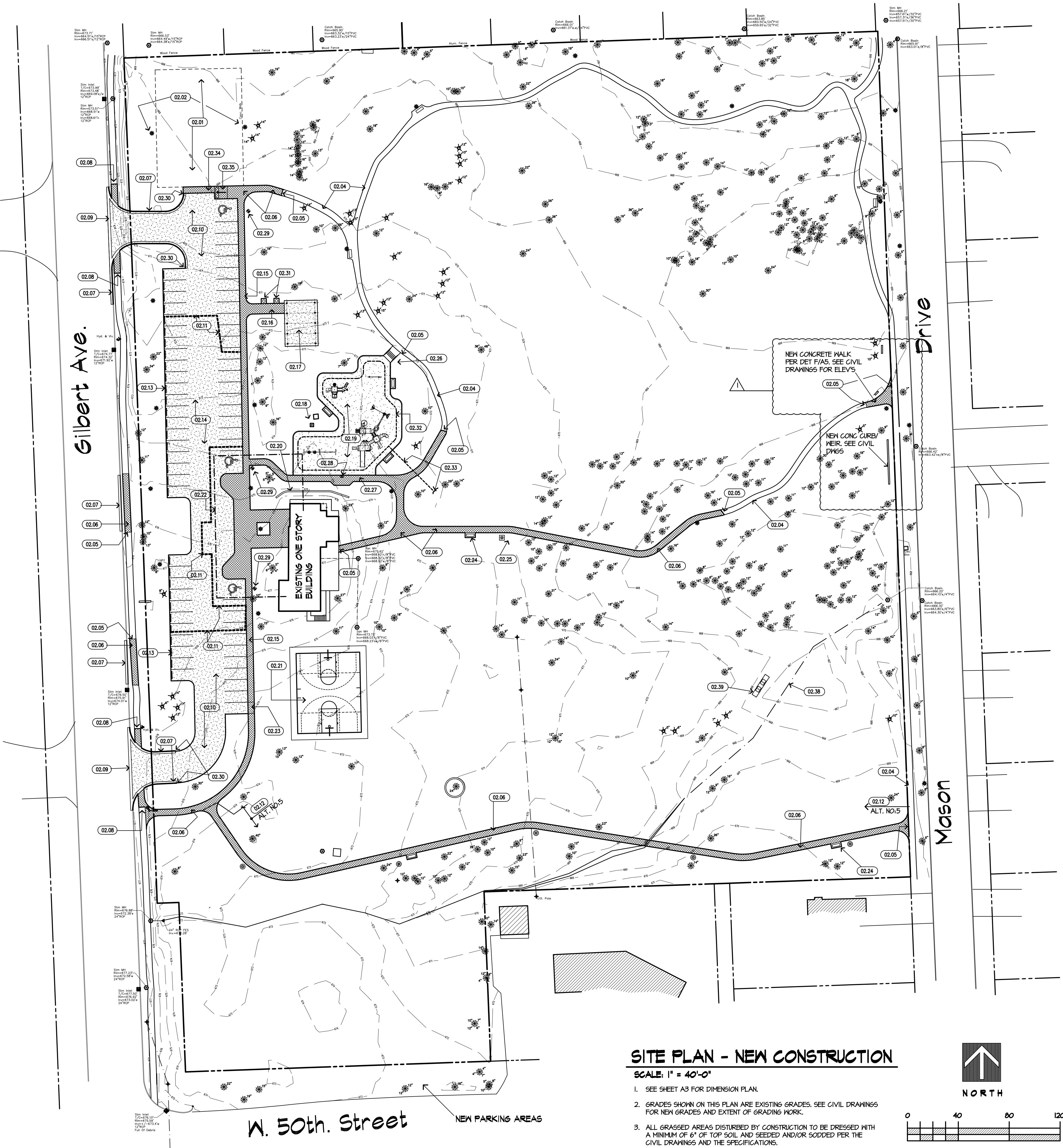
DATE 08-12-11

JOB NO. 210002

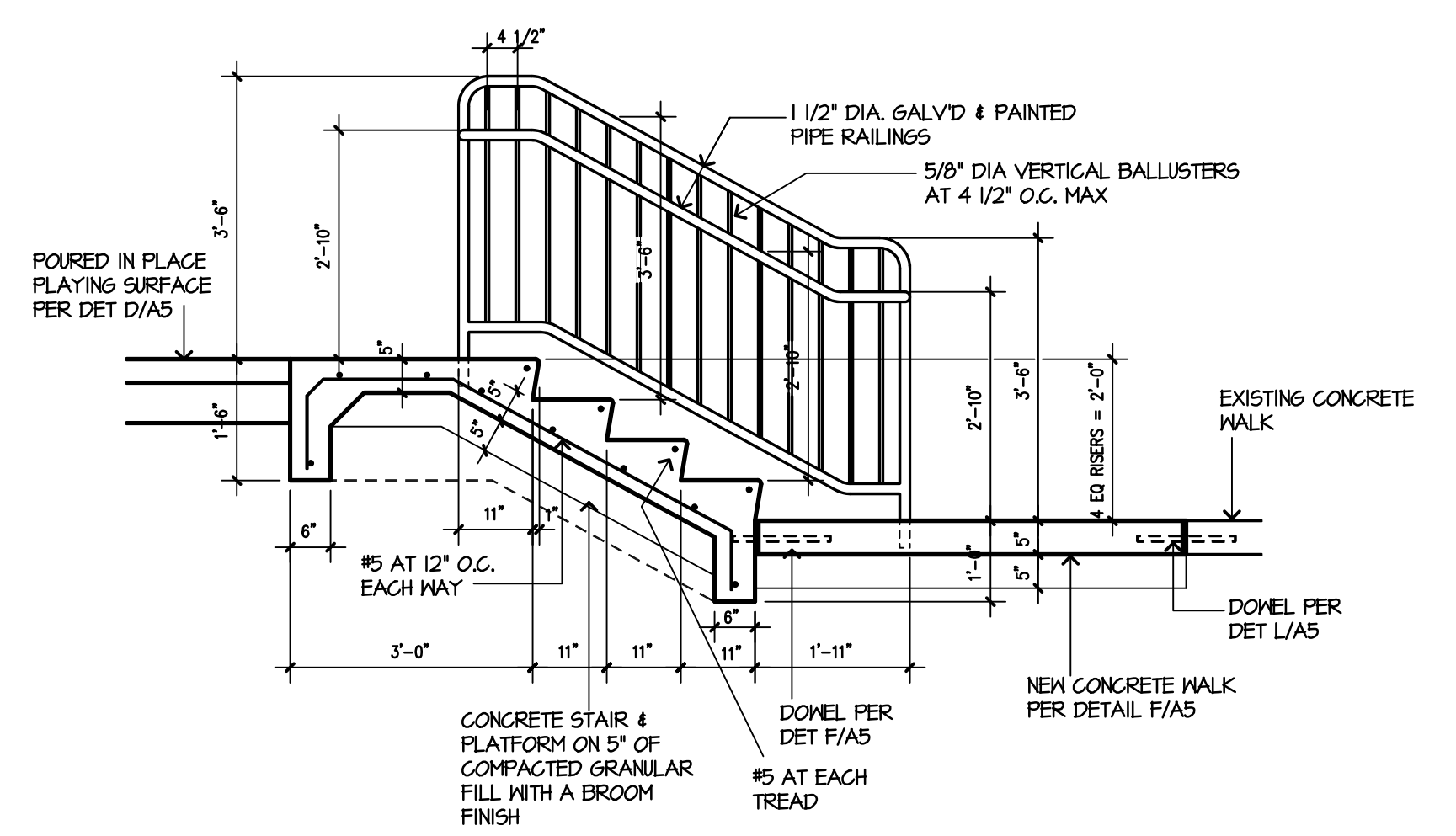
DRAWN BY JEB

SHEET

A-02
 of 07



- 02.01 FILL IN EXCAVATED AREA WITH COMPACTED CLAY MATERIALS AND A MINIMUM OF 8" OF TOP SOIL. MATCH EXISTING GRADES UNLESS NOTED OTHERWISE.
- 02.02 EXISTING LIGHT STANDARDS TO REMAIN.
- 02.03 CONCRETE CURB/SIDEWALK PER DETAIL 6/A5.
- 02.04 EXISTING 5'-0" WIDE CONCRETE WALKS.
- 02.05 DOWEL NEW CONCRETE WALK INTO EXISTING CONCRETE WALK PER DETAIL L/A5.
- 02.06 NEW 5'-0" WIDE CONCRETE WALKS. SEE DETAIL F/A5.
- 02.07 NEW CONCRETE CURB. SEE DETAIL B/A5. DOWEL NEW CURB INTO SIDE OF THE EXISTING CONCRETE CURB.
- 02.08 NEW CONCRETE ADA SIDEWALK/RAMP. SEE PLAN B/A4.
- 02.09 NEW CONCRETE FLAT CURB AT ENTRY DRIVE. SEE DETAIL B/A5.
- 02.10 NEW ASPHALT PARKING LOT ON COMPACTED GRANULAR FILL PER DET N/A5.
- 02.11 EXTENT OF EXISTING ASPHALT PARKING LOT TO REMAIN. SEE DETAIL N/A5 FOR DETAIL OF TIEING IN NEW AND EXISTING ASPHALT AREAS.
- 02.12 NEW CONCRETE PATHS, PATHWAY LIGHTING AND BENCHES ARE ALL PART OF ALT. NO.5.
- 02.13 NEW PARKING BUMPERS. SEE DETAIL A/A5.
- 02.14 NEW 1/2" OF ASPHALT ON THE EXISTING PARKING LOT PER DETAIL N/A5.
- 02.15 NEW 5'-0" WIDE CONCRETE WALK/CURB PER DETAIL F/A5.
- 02.16 NEW 8'-0" WIDE CONCRETE WALK TO SHELTER AREA. SEE DETAIL F/A5.
- 02.17 NEW SHELTER. SEE SHEET A-6.
- 02.18 EXISTING ELECTRICAL TRANSFORMER AND EQUIPMENT.
- 02.19 NEW CHILDREN'S PLAY AREA. SEE SHEET A-7.
- 02.20 65 L.F. OF NEW MODULAR BLOCK RETAINING WALL IN HEIGHTS AS REQ'D. SEE DET C/A5.
- 02.21 NEW ASPHALT BASKETBALL COURT. SEE PLAN A/A4 FOR PLAN AND DETAILS. ALL WORK PART OF ALTERNATE NO. 1.
- 02.22 SEE PLAN D/A4 FOR LARGE SCALE PLAN OF THIS AREA.
- 02.23 SLOPE SIDEWALK/CURB FROM 6" IN HEIGHT SOUTH DOWN TO 0" TO BE FLUSH WITH THE TOP OF THE ASPHALT.
- 02.24 NEW CONCRETE BENCH PAD AND BENCH PER DETAIL Q/A5.
- 02.25 NEW LOCATION FOR EXISTING LIGHT POLE AND LIGHT. PROVIDE NEW FOUNDATION AS REQUIRED. REPAIR AS SHOWN ON SHEET A3.
- 02.26 NEW CONCRETE PAD WITH A CURB ON THE PLAY EQUIPMENT END OF THE PAD. SEE DETAIL Q/A5.
- 02.27 NEW CONCRETE WALK WITH A CURB ON THE PLAY EQUIPMENT SIDE OF THE PATH. SEE DETAIL D/A5.
- 02.28 FOUR NEW CONCRETE WALK AROUND EXISTING PHONE PEDESTAL. SEE DETAIL G/A4 FOR PROTECTION AT PEDESTAL.
- 02.29 NEW HANDICAPPED PARKING SIGNS. SEE DETAIL Q/A5.
- 02.30 SLOPE BACK OF CURB FROM A 6" HEIGHT TO ZERO WITHIN A 12" LENGTH.
- 02.31 NEW GARBAGE CAN AND CONCRETE PAD. SEE DETAIL G/A4.
- 02.32 4" DRAIN TILE UNDER PLAYAREA PER DETAILS D4E/A5.
- 02.33 4" DRAIN TILE TO GALVANIZED METAL FLARED END. INVERT TO BE AT 612.00.
- 02.34 TYPICAL CONCRETE WALK PER DETAIL F/A5. TOP OF WALK TO MATCH TOP OF ASPHALT FOR DRAINAGE PURPOSES. SEE DRAWING G-01.
- 02.35 CONCRETE ADA RAMP PER SECTION F/A4. PROVIDE A 24"x14" "ACCESS TILE" REPLACEABLE CASE IN PLACE TACTILE SURFACE AS MFG'D BY ACCESS PRODUCTS, INC.
- 02.36 NOTE DELETED
- 02.37 NOTE DELETED
- 02.38 CENTERLINE OF REDESIGNED DRAINAGE WAY. SEE CIVIL DRAWINGS.
- 02.39 NEW ROCK AREA FORMATION TO SIT FIVE FEET NORTH OF THE NEW PRAIRIE GRASSES. NEW FORMATION TO HAVE THREE BASE OUTCROPPINGS 4x6x10"H AND TWO TOP OUTCROPPINGS OF 3x5x10"H. MATERIAL TO BE DOOR COUNTY WEATHERED EDGE OUTCROPPINGS AS SUPPLIED BY LURVEY LANDSCAPE SUPPLY AND GARDEN CENTER IN DES PLAINES, ILLINOIS OR APPROVED EQUAL.



CONCRETE STAIR DETAIL
 SCALE: 1/2" = 1'-0"

SITE PLAN - NEW CONSTRUCTION

- SCALE: 1" = 40'-0"
1. SEE SHEET A3 FOR DIMENSION PLAN.
 2. GRADES SHOWN ON THIS PLAN ARE EXISTING GRADES. SEE CIVIL DRAWINGS FOR NEW GRADES AND EXTENT OF GRADING WORK.
 3. ALL GRASSED AREAS DISTURBED BY CONSTRUCTION TO BE DRESSED WITH A MINIMUM OF 6" OF TOP SOIL AND SEEDED AND/OR SODDED PER THE CIVIL DRAWINGS AND THE SPECIFICATIONS.

