

**District 102 Board of Education Presentation
by the Park District of La Grange
Regarding Potential Transition of Before and After School Program
May 5, 2011**

EXECUTIVE SUMMARY

The Park District staff and Board wish to enter into an agreement to operate the program known as BASE for the benefit and support of the children of District 102. Upon review of the goals and policies of BASE and both our Districts, we reaffirm to the District 102 Board that we share a commitment to the children of our community and endeavor to provide high quality services for their physical, social, emotional and academic development.

Our objective would be to enhance the existing program by providing additional support and supervision for BASE staff, implementing administrative processes that make BASE more convenient for parents, and providing students a safe and friendly atmosphere that balances homework with fun. Furthermore, we look to provide a smooth transition for parents, students and staff.

We have provided this written presentation at the request of your Superintendent, Warren Schillingburg, John Segvich, Asst. Superintendent of Finance, and Board Member Mark Stenner. We hope it answers your questions. We also express our willingness and desire to appear personally to answer any further questions that you may have.

RESEARCH

In the past several months, we have visited the schools where the BASE program operates, researched current programming and viewed the classroom set-ups. We have also talked with the teachers and supervisors during our visits to the school sites and have spoken one-on-one with the BASE supervisors. This research has provided a sound base of knowledge on the program's current operation, objectives and benefits. In addition, the program budgets that we have been able to review show that BASE is financially sound.

We have also done industry research to determine how other communities operate before and after school programs and found that this type of program is operated by numerous park districts in Illinois. We found 33 park districts in the suburban Chicago area that operate programs, some within park district facilities and others utilizing school district facilities. The list includes Western Springs, Hinsdale, Oakbrook Terrace, Pleasantdale, Lisle, Westmont, Oak Park, Addison, Carol Stream, St. Charles, Palatine, Bartlett, Frankfort, Bolingbrook, New Lenox, Olympia Fields, Woodridge, Orland Park and Oak

Lawn. Research indicates that a key reason programs like this work well in these communities is the strong commitment to the children and the program quality.

CONSISTENCY WITH PARK DISTRICT MISSION AND GOALS

The Mission of the Park District is “to provide quality recreation programs, facilities and parks that enhance the health, happiness and quality of life of Park District residents.” We have provided athletic/fitness programs, preschool, art, music, and other educational programs consistent with this mission for many years.

Our goals for the coming year include “provide programs that improve the health and quality of life in our community” (Goal #2) and “maximize benefits to our residents with the funds we receive” (Goal #3). Our Board and staff believe that incorporating the BASE program into the Park District of La Grange is consistent with these goals. Furthermore, we have included the BASE program (subject to our reaching a mutual agreement) in our 10-year strategic plan which is undergoing its final revisions.

We believe the Park District of La Grange’s management of the BASE program will provide numerous important benefits to the children, parents, District 102, BASE employees, and the Park District of LaGrange. Many of these benefits will also serve the community as a whole, and we feel confident that we can maximize the benefits to the community through the BASE program. We have outlined the anticipated benefits as follows:

BENEFITS FOR THE KIDS

- Increased diversity of enrichment opportunities with exposure to PDLG programs for those who wish to participate.
- Renewed emphasis on homework completion.
- Improved perception of BASE with the opportunity for "fun" with the Park District.
- Wider variety of healthy foods due to the ability of PDLG to utilize its Recreation Center as a storage and distribution facility.
- Increased attention to safety and security.
- Transition planning is expected to minimize disruption to kids.

BENEFITS FOR THE PARENTS

- Convenience. Our online resources include scheduling, payments, news, etc. We can easily add BASE to our website and provide a significant amount of information helpful to parents. We will also add payment options for the benefit of parents.

- Proven information privacy practices with on-site, secured computer servers and web pages.
- Ability to provide a wider variety of healthy foods due to the ability of PDLG to utilize its Recreation Center as a storage and distribution facility.
- Added flexibility and peace of mind for parents in providing reliable care/camps for kids on school holidays at the recreation center, if sufficient demand exists (additional fee will apply).
- Increased opportunity to enroll their children in PDLG programs, possibly during the hours of BASE.
- Opens up the BASE opportunity to kids with special needs. We can provide the services of SEASPAR for individuals that are in need of assistance.
- Potential for flexibility in hours served. Based on parent demand, PDLG may be able to extend the pick-up time on a day-to-day or regular basis if warranted by parent feedback.
- Park District operations involve safety and security. PDLG operates under a rigorous safety risk management program. All staff members are required to attend yearly training. Certified staff members keep up with their educational requirements (2.0 CEU's).
- The Park District is a member of the South Suburban Risk Management Group, which oversees normal safety risk procedures. All members go through monthly, quarterly and yearly training schedules.
- Two collaborating taxing agencies will become better aligned with their core values, as well as complimenting each other's mission.
- The best resources of both agencies will be tapped and utilized to the highest possible degree.
- Collaborative use of tax dollars.
- Improved role in our community to supply and support programs that improve mental and academic elements of the whole child.

BENEFITS FOR DISTRICT 102

- Reduction of time, resources, and administrative salary costs (e.g. with the District Superintendent, Finance, Administration, etc.).
- Improved image with the public due to collaboration of local taxing entities.
- District 102 heightens its concentration on education.
- BASE achieves a higher level of fiscal control on revenues because payments will be run through the secure Park District system.

BENEFITS FOR THE PARK DISTRICT OF LA GRANGE

PDLG does not anticipate BASE as a significant revenue engine, nor does it anticipate the need to subsidize the BASE program. BASE is currently self-sustaining with a modest profit which will cover administrative costs of the Park District. BASE will:

- Improve public relations by increasing intergovernmental collaboration, which is valued by the community and our District.
- Introduce participants to this Park District program at an early age, building future customer base.
- Provide ability to market our programs to BASE participants, giving them options for enrichment activities through BASE.
- Provide potential for further utilizing our resources/facilities for the benefit of the community.

BENEFITS FOR BASE STAFF

- PDLG administration has many years experience in recreation and education. It is anticipated that BASE will be a separate department of the PDLG with the coordinator reporting directly to the Executive Director (see organization chart attached).
- BASE coordinator will receive an enhanced level of support and administration for scheduling, billing, communication, capital replacement, and day-to-day issues.
- Assistance in program planning, purchasing, storage, and oversight.
- No staffing changes are anticipated at this time.
- Enhanced training, including safety training.

PDLG RESOURCES WHICH ARE EXPECTED TO IMPROVE BASE

- Ability to provide a diverse range of passive and active recreation opportunities, either separately from BASE or possibly integrated with BASE in the future.
- Ability to utilize the PDLG administration and facility to improve the program through centralization and economies of scale.
- Our focus on recreation as a path to developing the whole child, which is aligned with goal statements within District 102.
- Credit card payments.
- Dedicated web site, with online calendar of events and menus.
- Online enrollment and payment capabilities.
- Multiple payment plan choices.

- Automatic check withdrawal option.
- Continued awareness of child-care tax importance (because of similar status as a taxing agency).
- PDLG can utilize its connections to acquire food grants
- We can offer storage space for many items.
- PDLG offers the administrative staff to help promote, support and secure the operation of this program for years to come.

OTHER CONSIDERATIONS

PDLG's attorneys have drafted a Lease Agreement to begin the discussion on space. This will need to be reviewed by District 102 staff and attorneys and negotiated. PDLG staff has prepared a first draft of a BASE Parent Manual (still undergoing revisions) intended to be distributed to parents at the beginning of the transition. This manual will be the first step in improving communications between staff and parents as it outlines important policies, procedures and guidance for parents who use or are considering using the BASE program.

NEXT STEPS

We believe the next step is to survey the parent participants as well as school families that might be interested in BASE offerings. The Park District believes the feedback from the survey would be helpful in determining additional needs, concerns, or suggestions that parents might have for BASE. It will also give parents the opportunity to express their feelings, questions and concerns about the BASE program and the proposed transition to the Park District.

We hope you find the information contained in this written presentation helpful and that it answers your questions. If you have any further questions or concerns please feel free to contact Dean Bissias, Executive Director (deanbissias@pdlg.org / 708-352-1762) or Mary Ellen Penicook, Board President (maryellenpenicook@pdlg.org). We would be happy to meet with your Board to clarify any details or provide additional information.



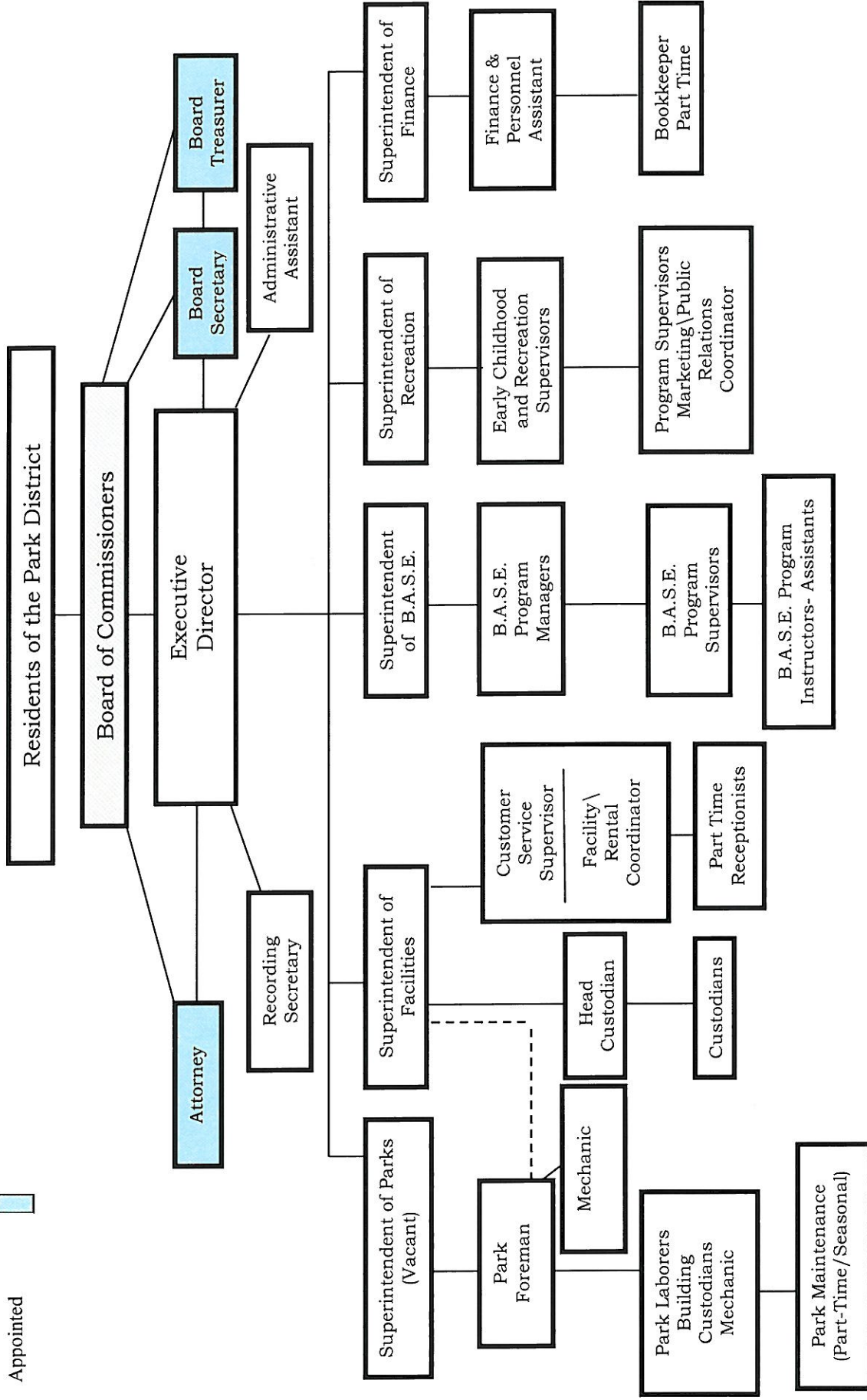
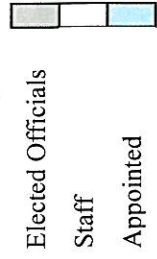
PDLG mission statement:

"Our mission is to provide quality recreation programs, facilities, and parks that enhance the health, happiness, and quality of life of park district residents"

Goals for 2011/2012

1. Provide clean, safe, attractive parks and facilities
2. Provide programs that improve the health and quality of life in our community
3. Maximize benefits to our residents with the funds we receive
4. Provide a work environment which maximizes the productivity and enthusiasm of our professional staff

Park District of La Grange Organizational Structure Chart



Base Program Survey

Thank you in advance for completing this survey. District 102, the Park District of La Grange, and BASE would like to make BASE the best before and after school program possible. We need your feedback to make this happen.

1. Family Name _____ School/Village _____
2. What are your children's ages? _____
3. Are you currently using BASE: Full time, part time, AM only, PM only, or occasionally?
Circle one.
4. Are the days/hours convenient for your needs? If not, what days/hours would you prefer?

5. Is the location/site convenient? _____
6. Is the cost for BASE affordable? _____
7. Does the program meet your expectations? If not, what changes would you like to see?

8. Do your children like coming to BASE? _____
9. What do you like best about BASE? _____

10. Is the facility adequately equipped with supplies to entertain and keep your child busy?

11. Is the facility clean, sanitary and safe? _____
12. Is staffing adequate? _____ Is staff friendly, helpful and welcoming? _____

13. Are you informed of important information in a timely manner? _____
14. Are you made aware of daily incidents? (child hurt, bullying, disagreements with others)

15. Are the communication files, newsletters and posted menu's and lesson plans helpful?

16. Would it be helpful if the communication in question 15 were accessible online? _____
17. What additional activities would you like to see in the program? _____

(continued on reverse side)

18. Please circle all that apply. I need childcare:

Monday thru Friday Holiday Breaks Summer Breaks Part time/Occasional

19. If there was a fee increase to enhance the program, would you still enroll your child?

20. Would you be in favor of a more structured schedule for the children's activities and daily lesson plans? _____ More homework help? _____
Or more active play time? _____

21. Would you be interested in enrichment programs where you would pay extra for a tutor or instructor (i.e., music/art teacher) to come in and work with your child? _____

Thank you for your help. Please feel free to use the space below to elaborate on any of your answers.