



# Community Park District Gymnasium Referendum April 4, 2023

[www.communityparkdistrict.org](http://www.communityparkdistrict.org)

Space to **LEARN**  
Space to **GROW**  
Space to **PLAY**



- In FYE 21/22 the Community Park District of La Grange Park served more than 1795 households through various programs and services such as yoga and preschool.
- This does not account for attendance at events such as the summer concert series, Wacky Wednesday Kids Entertainment series, Storytime in the Park, the Egg Hunt, Community Campfires and more.



**Every Year**  
**La Grange Park residents invest**  
**approximately \$500,000 in**  
**recreational programs at the**  
**Park District of Lagrange +**  
**And hundreds of thousands more**  
**in other communities.**

## Recreation in La Grange Park

Recreation program revenue has jumped 26% since FYE 18/19  
*From FYE 15/16 – FYE 18/19 revenue only grew 8%*

4,200+ individual program registrations in FYE 21/22  
*FYE 17/18 = 3,784 individual registrations*

**As of February 26, 2023 we**  
**already have 101 LGP families**  
**signed up for Summer Camp!**

Space to **LEARN**  
Space to **GROW**  
Space to **PLAY**



**CPD offers affordable recreational opportunities**

87% Agree

**There are enough parks in La Grange Park**

81% Agree

**There are enough indoor recreational opportunities in La Grange Park...**

**61%  
Disagree**

**2022 Community Park District  
Comprehensive Survey Results**

**CPD offers quality programs and special events**

76% Agree

**There are enough sports fields**

68% Agree

[www.communityparkdistrict.org](http://www.communityparkdistrict.org)

A recent study discovered that the average U.S. citizen has approximately 34 hours available for recreation each week. Using this figure as a base, the 13,494 residents within the CPD boundaries alone have nearly 459,000 hours available for recreation each week, or more than 23 million hours per year.



**In 2019, LGP residents spent \$529,000 at the Park District of Lagrange.**

**From January 1-February 13, 2023, LGP residents had already invested more than \$63,000 in program fees in Lagrange.**

**LGP residents also spend more than \$47,000 in membership fees alone each year at the Oak Brook Park District.**

# Money spent on recreational opportunities is invested right back into improving the parks and facilities in those communities:

**\$400,000**

Annual resident investment in recreational programming in La Grange Park

**Typical Improvement Costs:**

Standard playground = \$250,000

Tennis Court Renovation = \$150,000

Pour in Place Playground Surface  
=\$300,000+

New Trees = \$120-\$250+ each

Robinhood Pathway Repair = \$10,000+

Ballfield Renovation = \$20,000+ each

\*FYE 2022 Gross Program Revenue = \$635,000.  
Nonresidents account for approximately \$235,000 or 37%  
of our Gross Revenue

**\$500,000**

Est. Annual LGP investment in  
Lagrange

**\$300,000+??**

Est. Annual LGP investment in  
Oak Brook, Western Springs,  
Westchester, McCook, etc.





# Program Revenue = 40% of the Park District's Operating Budget

TAXING DISTRICT BREAKDOWN		
Taxing Districts	2021 Tax	2021 Rate
<b>MISCELLANEOUS TAXES</b>		
Des Plaines Valley Mosq Abate Dist Lyons	20.14	0.014
Metro Water Reclamation Dist of Chicago	549.45	0.382
La Grange Park Public Library District	713.42	0.496
Park District of La Grange Park	454.52	0.316
<b>Miscellaneous Taxes Total</b>	<b>1,737.53</b>	<b>1.208</b>
<b>SCHOOL TAXES</b>		
DuPage Comm Col 502 Roselle Burr Rdg	362.46	0.252
Lyons Township High School District 204	3,141.33	2.184
La Grange School District 102	5,747.61	3.996
<b>School Taxes Total</b>	<b>9,251.40</b>	<b>6.432</b>
<b>MUNICIPALITY/TOWNSHIP TAXES</b>		
Village of La Grange Park	1,838.20	1.278
Proviso Mental Health District	191.30	0.133
Road & Bridge Proviso	0.00	0.000
General Assistance Proviso	79.11	0.055
Town of Proviso	159.66	0.111
<b>Municipality/Township Taxes Total</b>	<b>2,268.27</b>	<b>1.577</b>
<b>COOK COUNTY TAXES</b>		
Cook County Forest Preserve District	83.42	0.058
Consolidated Elections	27.33	0.019
County of Cook	349.50	0.243
Cook County Public Safety	188.42	0.131
Cook County Health Facilities	103.56	0.072
<b>Cook County Taxes Total</b>	<b>752.23</b>	<b>0.523</b>
<b>(Do not pay these totals)</b>	<b>14,009.43</b>	<b>9.740</b>



The park district maintains over 20 acres of parkland, six parks, one recreation center, one parks maintenance building, and two recreational outbuildings. We employ up to 8 full time employees and 45 part time employees each year, and our tax rate is less than that of the La Grange Park Library.

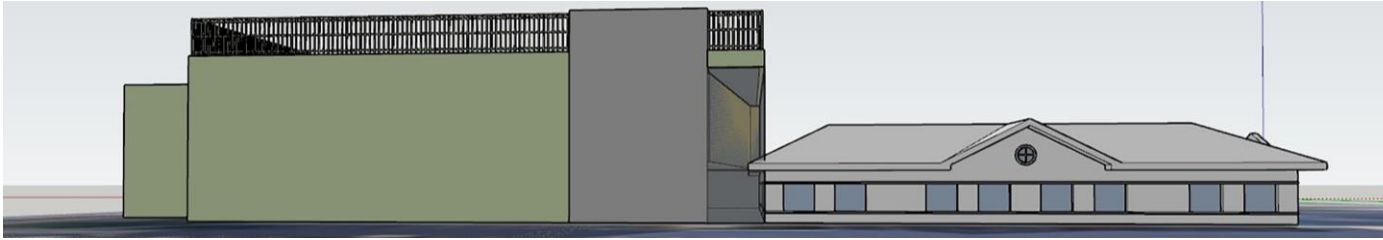
### Question 1:

#### **PROPOSITION TO ISSUE \$10,700,000 PARK BONDS**

Shall the Community Park District of LaGrange Park, Cook County, Illinois, improve the site of and renovate the Recreation Center and build and equip an addition thereto, including building a gymnasium with athletic and recreational facilities, and issue its bonds to the amount of \$10,700,000 for the purpose of paying the costs thereof?

#### **IF PASSED**

The district would issue up to \$10.7 M to build the gym and lobby addition. Cost = \$17/month for a resident owning a home with a fair market value of \$300,000 home for 20 years.



### Question 2:

#### **COMMUNITY PARK DISTRICT – INCREASE LIMITING RATE**

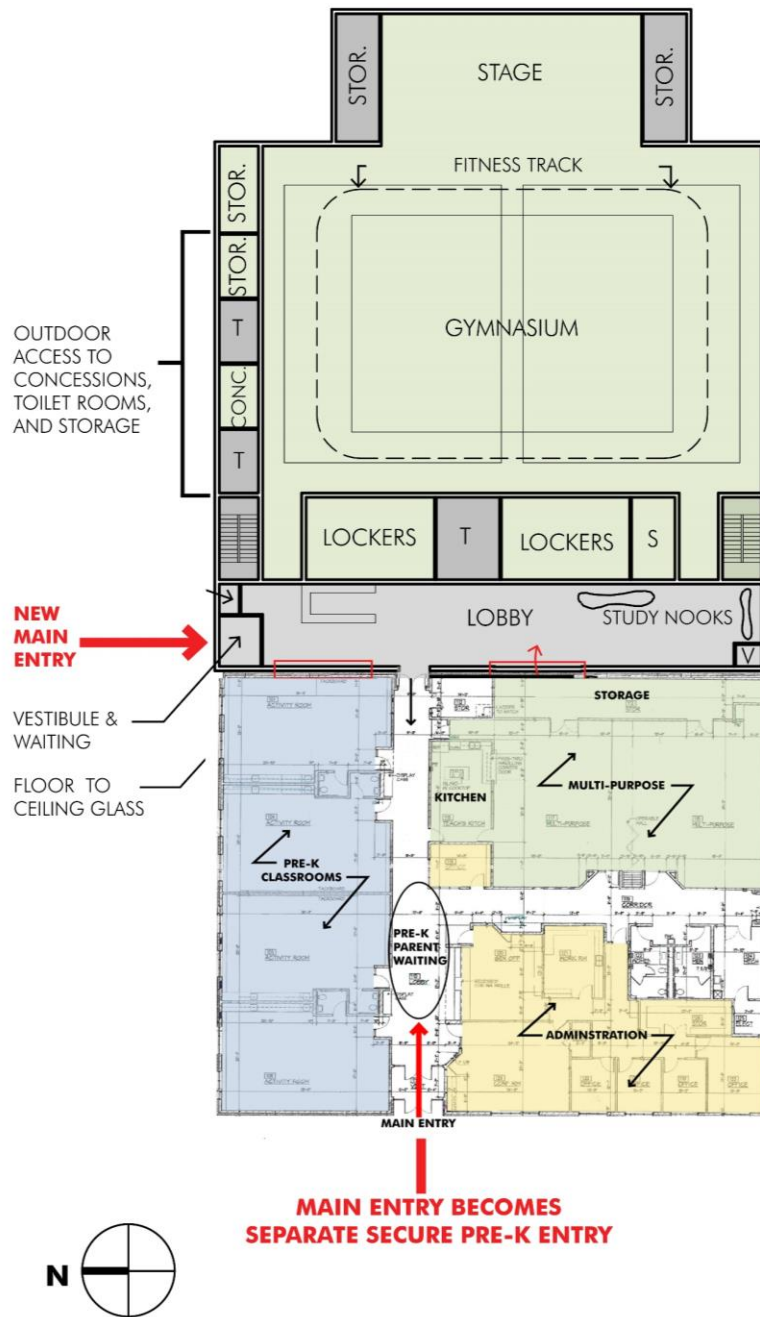
Shall the limiting rate under the Property Tax Extension Limitation Law for the Community Park District of LaGrange Park, Cook County, Illinois, be increased by an additional amount equal to 0.038% above the limiting rate for levy year 2021 for park purposes?

#### **IF PASSED**

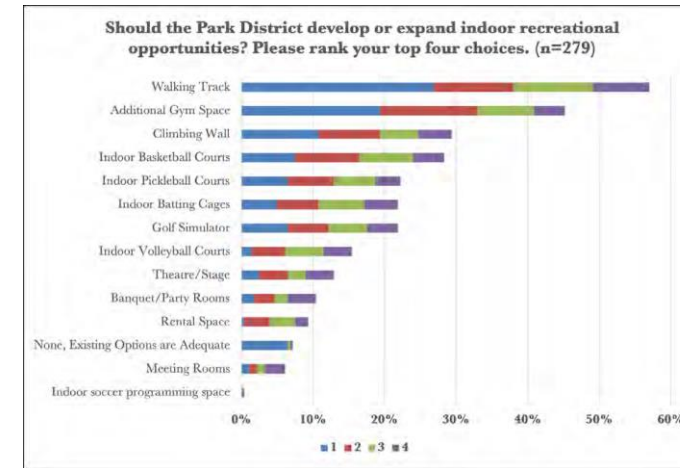
The tax rate would increase by 0.038% adding an additional \$150,000 to the annual park district levy for operations. This would cost \$3/month for a resident owning a home with a fair market value of \$300,000 in perpetuity.

**On April 4,  
residents will  
decide the future  
of parks and  
recreation in La  
Grange Park**

**Space to LEARN  
Space to GROW  
Space to PLAY**



**57.0%**  
asked for a  
walking track



**45.9%**  
asked for gym  
space

**Total Additional  
Community Investment  
if both measures pass:**

\$300,000 Home:  
\$20/month

\$500,00 Home:  
\$33/month

Space to **LEARN**  
Space to **GROW**  
Space to **PLAY**

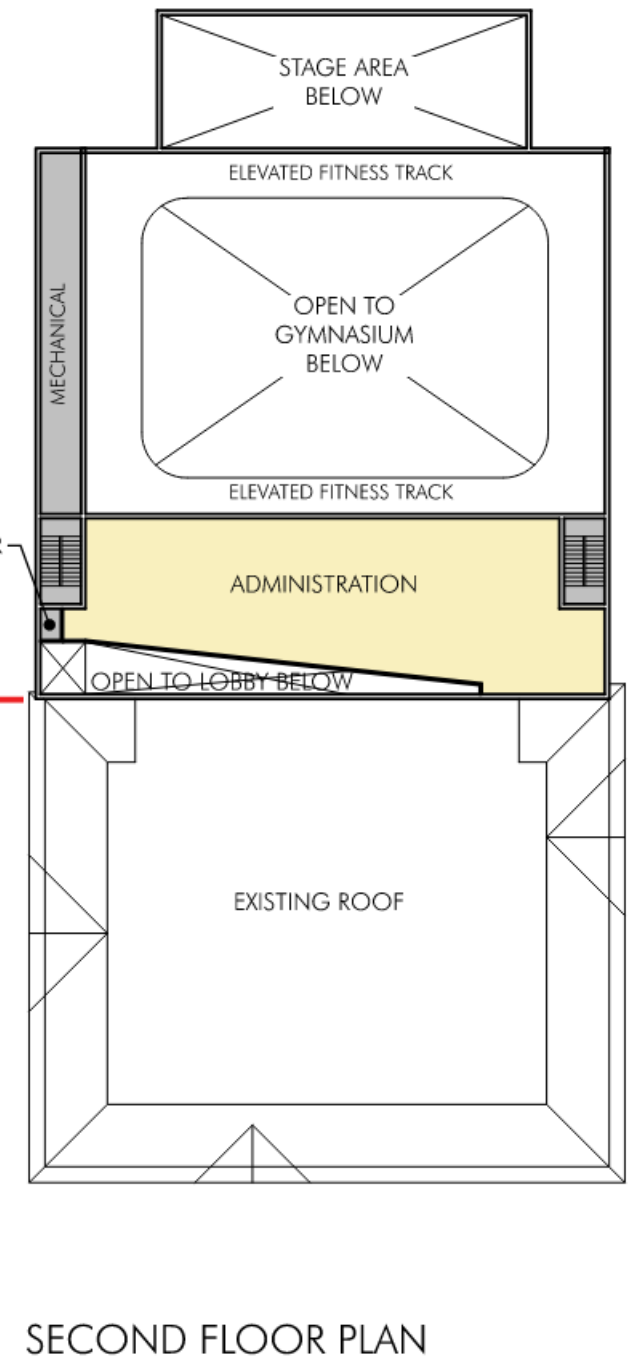
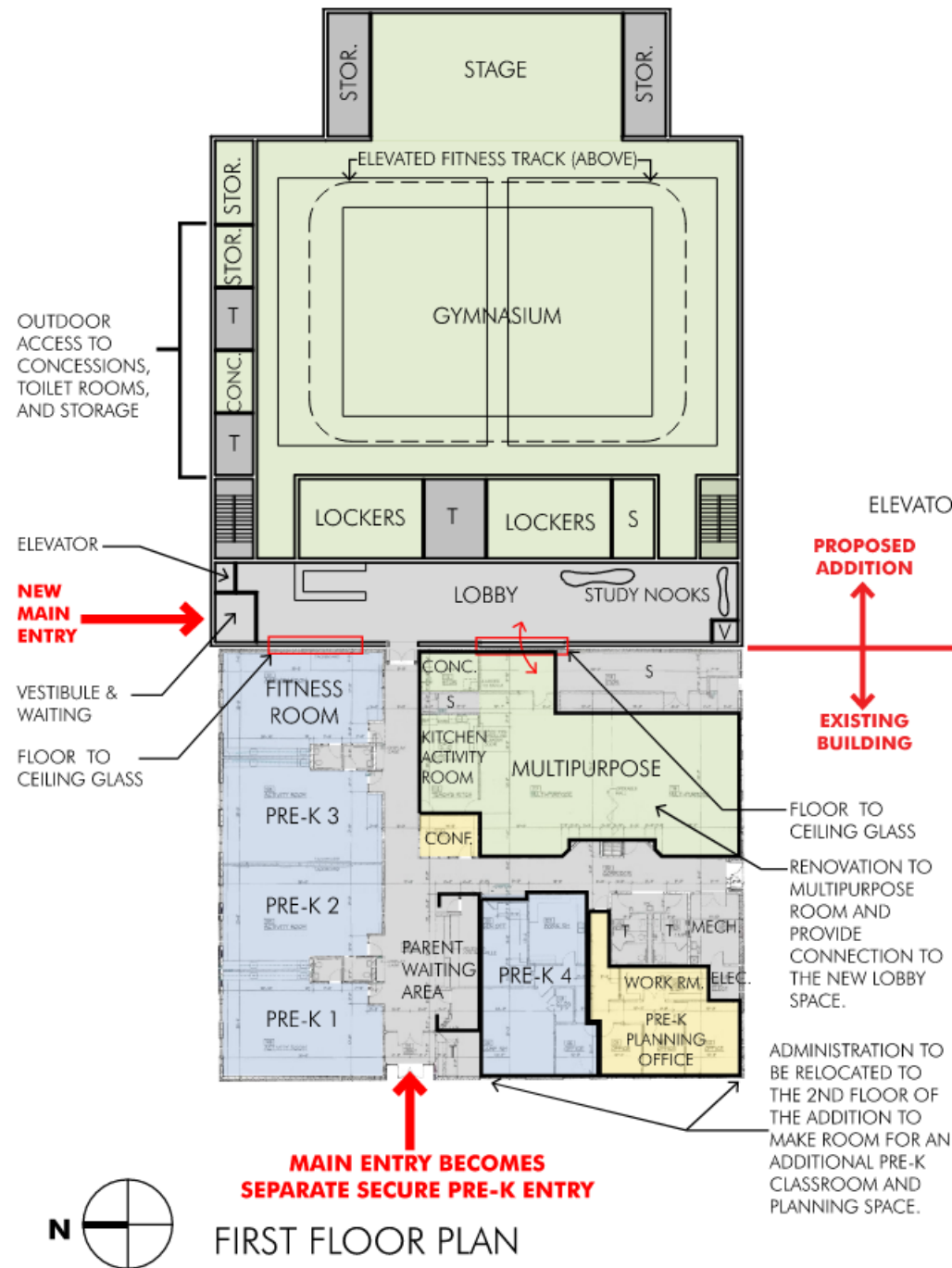
## Conceptual Plans Developed During the Master Planning Process

- Controlled Entrance and Secured Space for Ready Teddy Preschool and Camp
- Gymnasium & Walking Track
- Stage
- Concessions

# Space To Grow

The proposed plans include the infrastructure needed to add a second story administrative space above the new lobby and a green roof with additional recreational space.

Space to **LEARN**  
Space to **GROW**  
Space to **PLAY**





## Bringing Recreation Home

- Increased Summer Camp
- After School/OST Activities
- Open Gym
- Youth Sports
- Adult Sports
- Group Exercise
- Senior Programs
- Birthday Parties
- Performing Arts
- Special Events

## But...Why Not Just Use the Schools?

We do! This year at Park Jr. High:

**72+** adults Participate in the Indoor Pickleball League Each Week

**42** adults participate in the Men's Wiffleball League Each Week

**48** adults participated in the Fall Women's Volleyball League

**150** kids participated in the Footlight Players Theatre Production  
(and more than **2400** spectators come and watch the shows!)

**75** dancers will participate in the Spring Recital (we anticipate **250+** parents and family members to watch the show)

Plus, we offer dozens of Saturday Morning Sports classes each year in the off season.

Brook Park opened their expanded facility in 2019. With COVID restrictions lifted, we have re-opened facility use discussions with D95 with more coming soon!

## Self-Sustaining

Initial forecasts indicate that the proposed facility could be self-sustaining as early as the first full year of operations and Profitable by the second year of operations.

Space to **LEARN**  
Space to **GROW**  
Space to **PLAY**



**If residents vote  
yes, and both  
measures pass:**

- Increased programming
- Equitable space for programming and community gathering
- Higher frequency of park improvements
- Faster funding for large capital improvements
- Increased funding for facility improvements
- Larger Special Events
- More sophisticated park amenities
- Safer facilities
- Space to grow

**On April 4,  
residents will  
decide if we bring  
recreation home,  
or stick with the  
status quo**

**If residents vote  
no, and either  
measure fails:**

- 7 to 10-year phased park improvement plans
- Continued deferred park maintenance
  - Basic playground replacements
  - Economy finishes
  - Higher program fees
  - Higher rental fees
- Limited program space
- Continued public access to early childhood education space

Space to **L**EARN  
Space to **G**ROW  
Space to **P**LAY

Questions?

# GYMNASIUM REFERENDUM

2 questions will determine the future of recreation in La Grange Park

 **VOTE** ON OR  
BEFORE  
**APRIL 4**

Space to **L**EARN  
Space to **G**ROW  
Space to **P**LAY

**Community  
Park District**  
*La Grange Park* 

Learn more at [www.communityparkdistrict.org](http://www.communityparkdistrict.org)