



Installation Guide

Cimatron 13.0 **Release Note**



Table of Contents

Hardware Requirements.....	1
Software Requirements.....	2
Installation Privileges.....	3
Installation Procedure.....	3
Installation Stages.....	8
Installation Layout.....	9
Installation Scenarios.....	9
Preserving User Data from a Previous Version.....	10
Cimatron Data Files (User-Customized).....	10
User-Created Data Files.....	13
Appendix A: Memory and Operating System Recommendations.....	14

Hardware Requirements

The hardware requirements for installing Cimatron are as follows:

- Processor:
 - **Minimum:** Intel Pentium or AMD Athlon processor, with a dual-core processor.
 - **Recommended:** Quad-core 64-bit processors (Intel core i7 4th generation and up).
- Memory (RAM):
 - **Minimum:** 4 Gb
 - **Recommended:** 16 Gb



Note: To gain better I/O performance, it is recommended using a solid state hard Drive (SSD). Windows and Cimatron should be installed on the SSD. The file management should be configured on a different hard drive, local or network based.

- Graphics Card:

Quadro cards from NVidia and FireGL/FirePro cards from ATI are the most recommended cards for CAD/CAM software.

The performance of graphics cards is tightly related to driver version and memory size. The newer the driver and the greater the memory, the better the graphics card performance.

For recommended graphics cards see the Cimatron website:
<https://cimgraphics.cimatron.com>

The graphics card must support OpenGL 3.0 3D:

 - **Minimum:** 512 Mb of memory
 - **Recommended:** 2 Gb of memory
- 3 button mouse.



Note: For detailed hardware recommendations see Appendix A.

Software Requirements

The software requirements for installing Cimatron are as follows:

- The following Windows operating systems are supported:

Recommended:

- Windows Server 2008 or 2012.
- Windows 7, Professional/Ultimate Edition.
- Windows 8 or 8.1, Professional/Ultimate Edition.
- Windows 10, Professional/Ultimate Edition.



Note: .NET Framework 4.5 is an installation prerequisite. If this is not installed, it is automatically installed during the Cimatron installation process.

Not supported:

- All 32-bit operating systems are not supported.
 - Windows XP 64-bit is not supported.
-
- Internet Explorer 9 or higher must be installed.

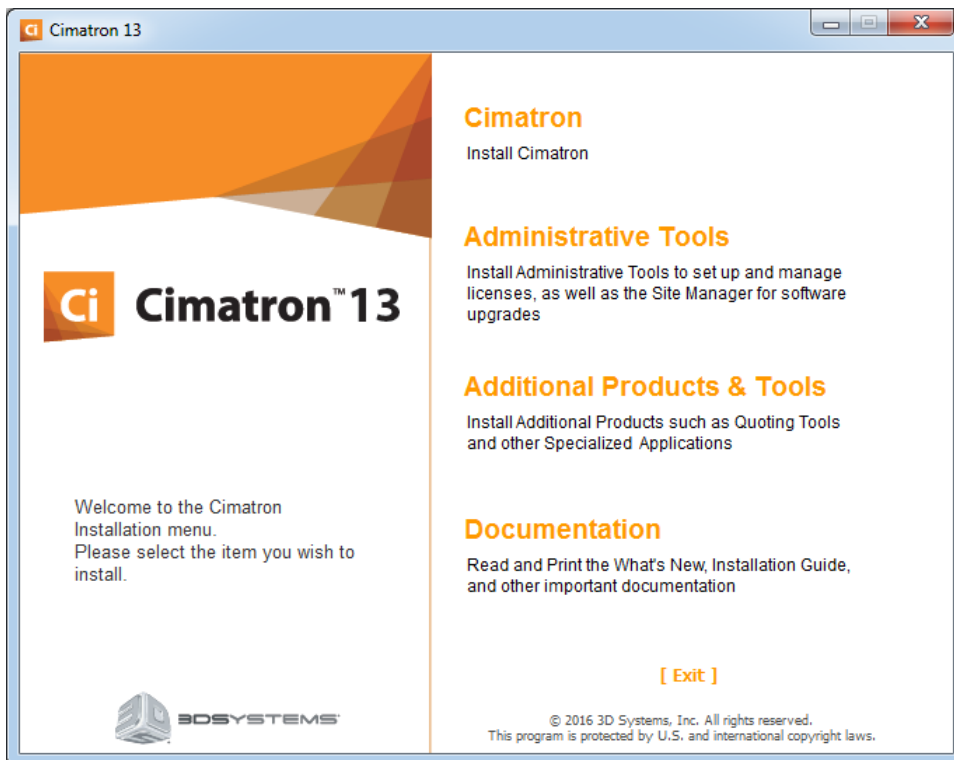
Installation Privileges

Only users that are logged-in as Administrators can install Cimatron.

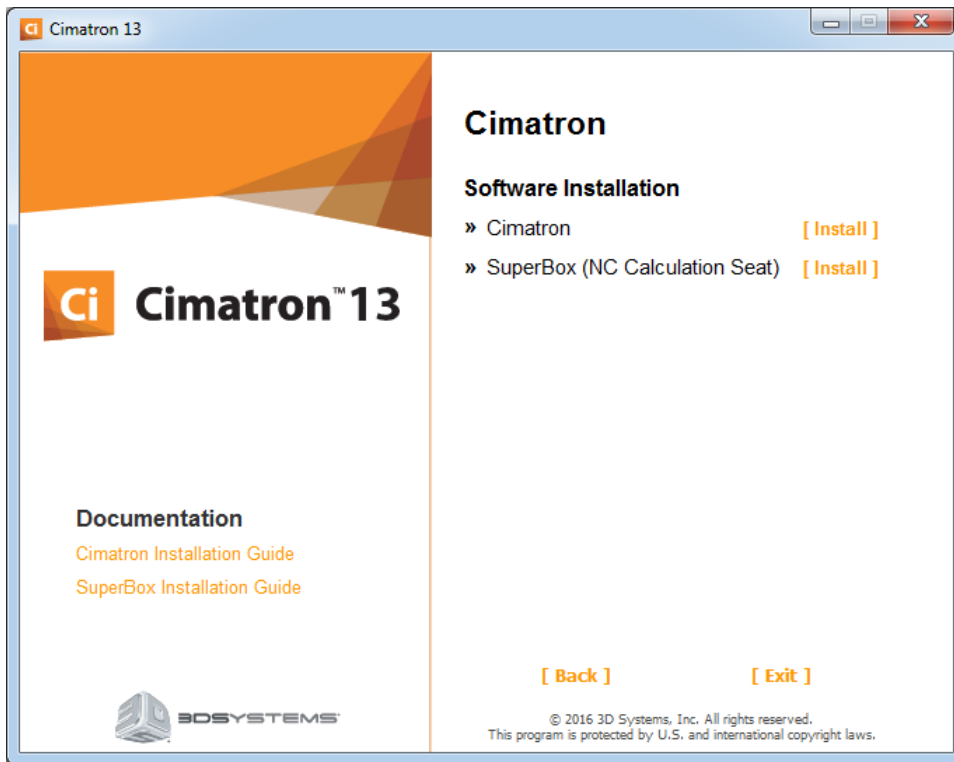
Installation Procedure

Prepare your computer for installation, as follows:

1. Close all other applications.
2. Insert the Cimatron installation **DVD** into the drive.
3. The Cimatron installation menu (**Autorun**) is displayed. Click the **Cimatron** item.



4. The next installation dialog is displayed. Select the software to install.

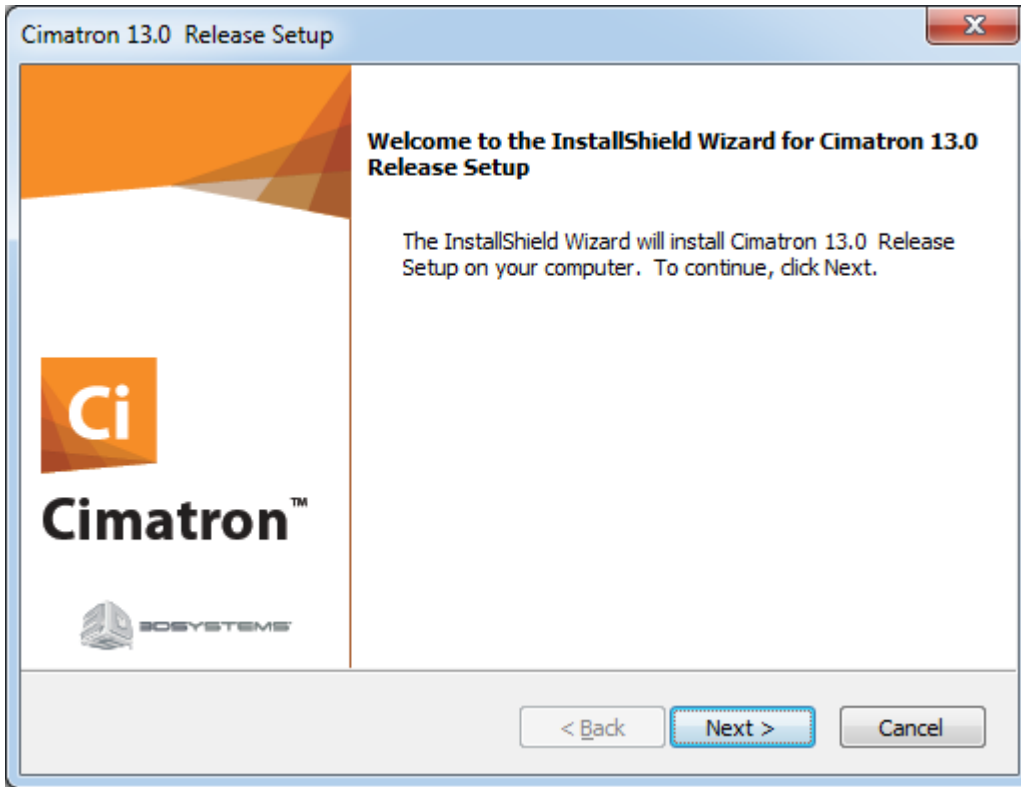


The installation program runs automatically; proceed according to the Installation Wizard instructions.

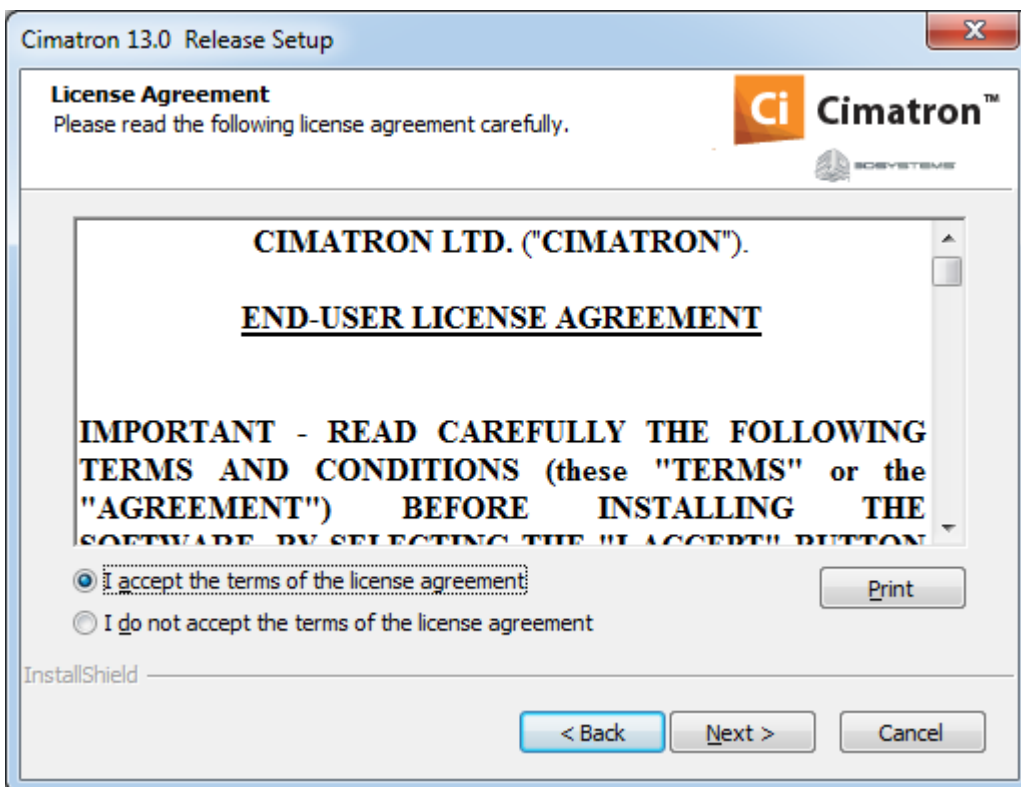


Note: Do not use spaces in any of the directory names (**xxx yyy**) – use underscores instead (**xxx_yyy**). Cimatron does not support names with spaces.

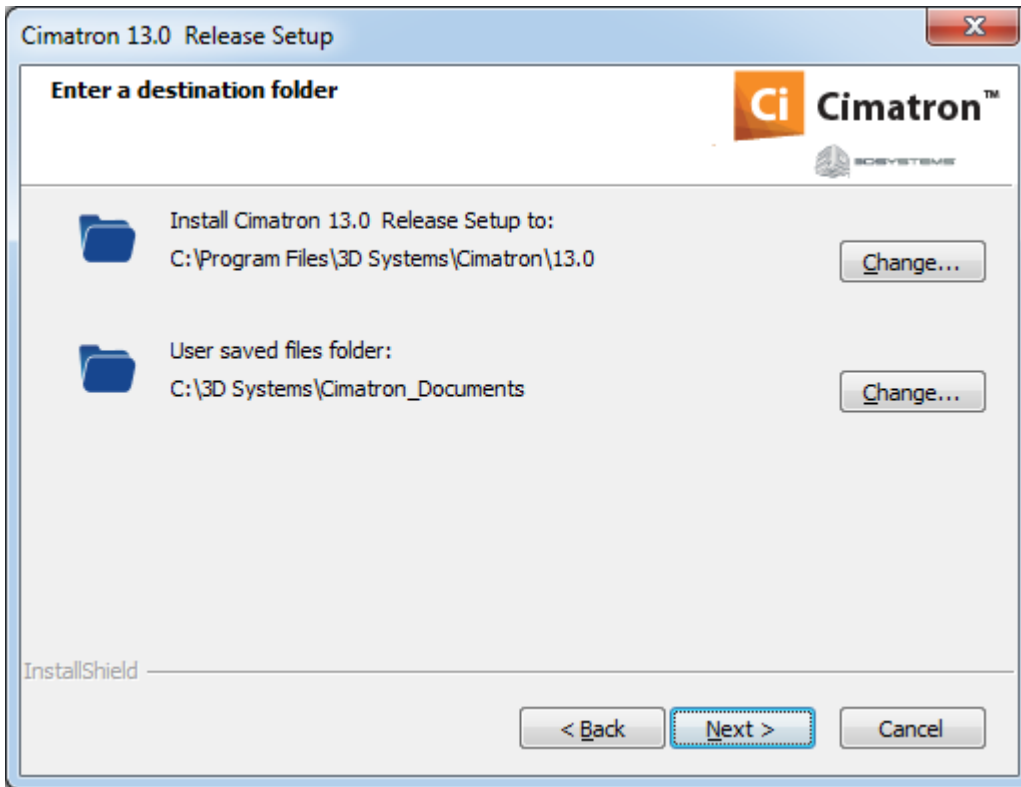
- 5. The Cimatron Welcome dialog is displayed. Click **Next**.



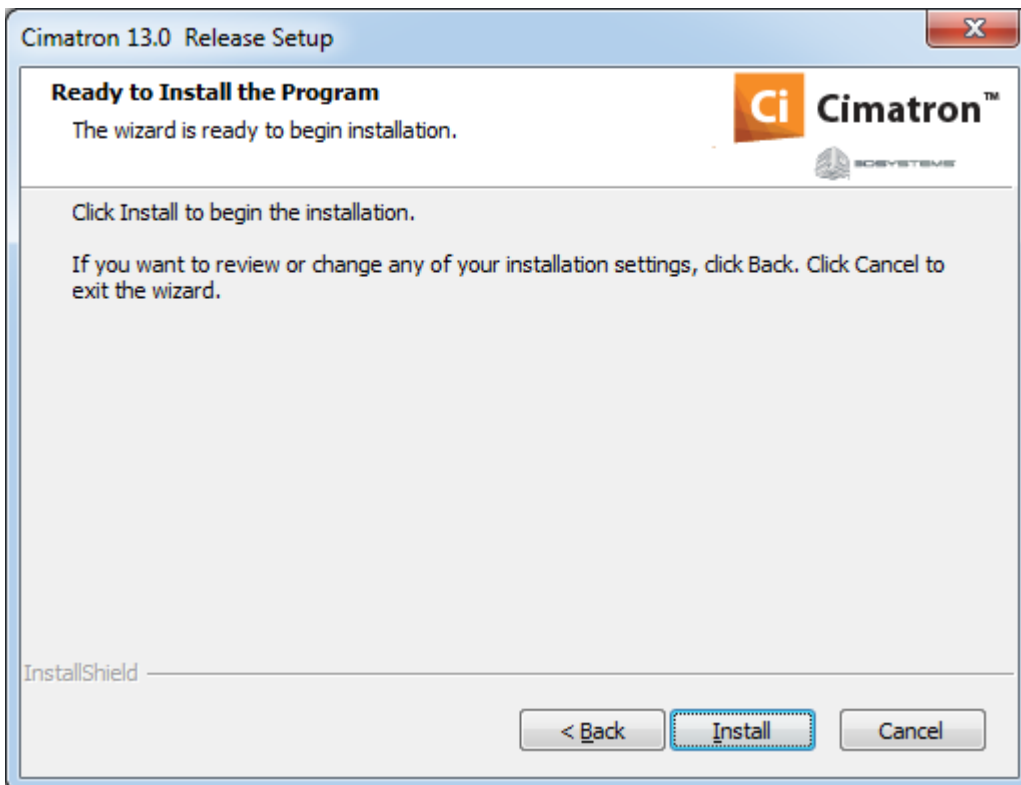
- 6. The **License Agreement** dialog is displayed. Read it carefully. To accept the terms of the license agreement, select the appropriate option and click **Next**.



7. The **Destination Folder** dialog is displayed. Change the destination folders as required, or accept the default locations. Click **Next**.



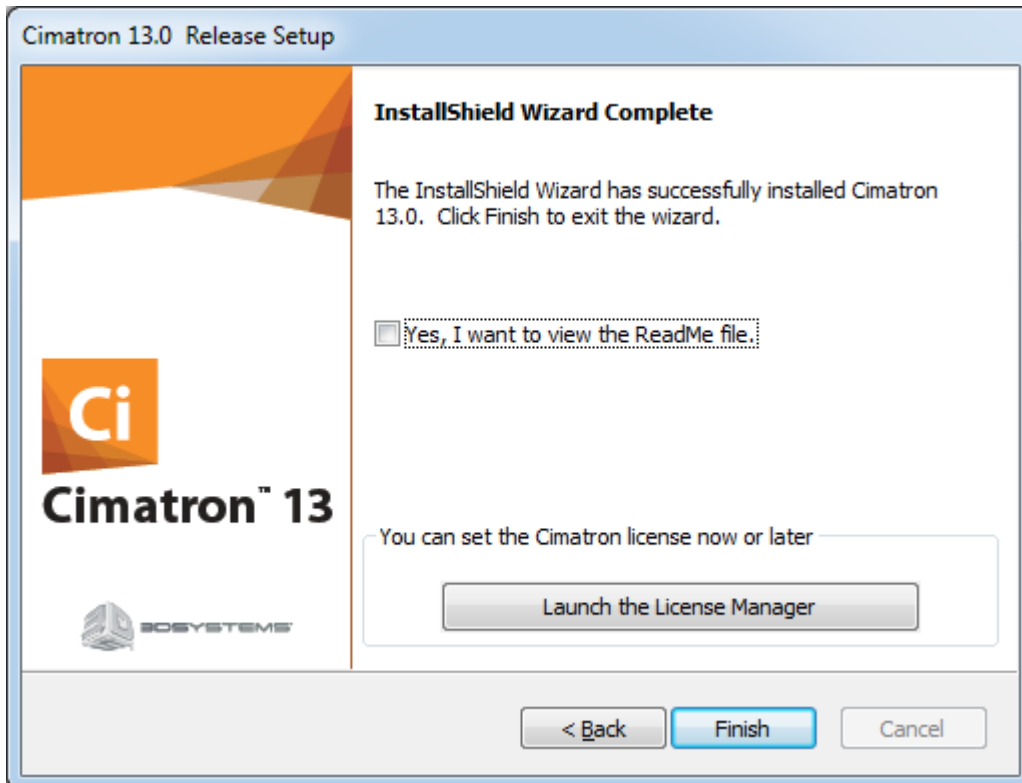
8. The components are about to be installed in the **Ready to Install** dialog. Click **Install**.



- When the installation is complete, we recommend that you read the **Readme** file. Click **Finish** to exit the installation procedure.



Notes: If you have the license file, enter the Local License Folder at this stage. However, if you have not received the license file yet, it is still possible to continue and finish the installation. Later on, it is possible to set the license information using the **License Manager** tool, the first time Cimatron runs or from the Cimatron Control Panel. (See the License Guide).



Installation Stages

The installation program installs the following software first, prior to installing Cimatron; these items are a prerequisite for the continuation of the installation:

- DotNet environment.
- Microsoft Visual C++ Redistributables



Note: During this stage of the installation, the system may require a restart. Under XP, the system does not automatically resume the installation after the restart; you need to manually start the installation process again.

The Cimatron installation stages are as follows:

- Checks if the user running the installation has Administrator rights.
- Recognizes the existing Cimatron versions on the computer (if any) and chooses the proper installation scenario: new, upgrade or additional installation (for a new major version):
 - Upgrades (overwrites) the previous installation, which is the default and recommended mode (for the same major version).
 - Side-by-side (additional) installation to the existing version (for a new major version).
- Creates Cimatron software layout (folders and sub-folders) and copies files to it.
- Data Files –
 - Preserves relevant user-defined (newly created) and user-modified data files from previous installations.
 - Merges the preference file (CimatronE.prf), attribute template files (modeler.exl and other), and attributes translation file (AttrTrnMap.xml). This only occurs for an Upgrade or an Additional installation.
- Installs the Print to PDF driver.
- Set License Location using the license manager (Optional).
- Adjusts Cimatron software to different computer environments; for example, different operating system languages: German, Japanese, etc.
- Uninstalls Cimatron software: removes all installed files from the disk, cleans registry, and removes program group.

Installation Layout

- Cimatron 13.0 folder structure is as follows:
C:\3D Systems\Cimatron_Documents
C:\Program Files\3D Systems\Cimatron13.0
 - \Data\Workarea
 - \Program
 - \SourceData
- The product's name and path (C:\ **Program Files\3D Systems\Cimatron**) is set by default and *can* be changed. However, the location of the following sub-folders *cannot* be changed: Data, Program, SourceData and Workarea.
- During the installation, you can change the location of the **Cimatron_Documents** folder. This is the default folder for user files.
- If you are using catalogs, make sure to install them from the Cimatron DVD, The default product name and installation path for the Catalogs is **C:\ProgramData\3D Systems\Catalogs_13.0**; however, this can be changed as required. The catalogs are installed per version, hence the version name in the default catalog install folder. When upgrading Catalogs, catalog parts that were created by the user will not be deleted. The content of the Catalog folder depends on the **Cimatron Mold & Die Catalogs** installation. Refer to the **Cimatron Mold & Die Catalogs** installation guide, for further details.

Installation Scenarios

Several possible installation scenarios are supported, as follows:

1. **New Installation:** Install the latest Cimatron version on a clean PC.
2. **Upgrade Installation:** When installing the same major version over an existing installation, the system automatically updates the version.

Preserving User Data from a Previous Version

Follow the instructions below to preserve user-customized and user-created data files from a previous Cimatron version.

Cimatron Data Files (User-Customized)

1. The **AttrTrnMap.xml** and **Cimatron E.prf** preferences file provided with Cimatron 13.0 is merged with user files from Cimatron 12.0 or Cimatron 11.0.
2. The **user-defined DI Flavors** files are not overwritten.
3. Other user-customized files are treated as shown in the following table:

File Name	Location	Changed in Cimatron 13.0	Installation Action
CimXplor.Pos, Catalog.Pos, FixedCollection.Pos, ModalLayout.Pos, MoldConfiguration.Pos, LayoutMM.Pos, LayoutInch.Pos, NCSequence.Pos, DieSet.Pos	Data	Yes	Install new file.
DieLoadDieSet.Pos, DieLoadPunchUnit.Pos	Data	No	Install new file.
CimPlot.ini	Data\Display	Yes	Upgrade Mode: Backup the existing files & install new ones. SBS: Install new files.
SpaceballSetup.ini MagellanSetup.ini	Data\Display	No	Upgrade Mode: Preserve existing files. SBS: Copy files from the existing version.
Default.material	Data\Display\LightsAndMaterials	No	Upgrade Mode: Backup the existing files & install new ones. SBS: Install new files.
Default.lights	Data\Display\LightsAndMaterials	Yes	Upgrade Mode: Install new ones. SBS: Install new files.

File Name	Location	Changed in Cimatron 13.0	Installation Action
pullcommands.ini	Data	No	Upgrade Mode: Preserve existing files. SBS: Copy files from the existing version.
NC.exl Drafting.exl	Data\Templates	No	Upgrade Mode: Preserve existing files. SBS: Copy files from the existing version.
Modeler.exl Assembly.exl	Data\Templates	Yes	Upgrade Mode: Merged with file from existing version. SBS: Merged with file from existing version.
Default.ttp	Data\Templates	Yes	Upgrade Mode: Backup the existing files & install new ones. SBS: Install new file.
DisplayQuality.exl	Data\Display	No	Upgrade Mode: Backup the existing files & install new ones. SBS: Install new files.
Symbols.rtf (special drafting symbols)	Data	No	Upgrade Mode: Preserve existing files. SBS: Copy files from the existing version
Document default templates	Data\Templates\Default	No	Install new files.
BOM_Template.csv	Data\Resource\english	No	SBS: Copy files from the existing version.
sym_text.csv idnum.dat	Data\Resource\english	Yes	Upgrade mode: Backup the existing files & install new ones. SBS: Backup the existing files & install new ones.

File Name	Location	Changed in Cimatron 13.0	Installation Action
threads.csv	Data	No	Upgrade Mode: Backup the existing files & install new ones. SBS: Install new files.
AttForRemove.txt	Data	No	Upgrade Mode: Backup the existing files & install new ones. SBS: Install new files.
ncverify.ini cvsolid.ini	<WINDIR>	Yes (by third party)	Backup existing files and install new ones.
off.csv	Data\dat\ externals	Yes	Backup in case of Upgrade installation.
PostParams.xml	Data	No	Upgrade mode: Preserve the existing file. SBS: Copy file from the existing version.
NCEnv.xml	Data	No	Upgrade Mode: Backup the existing file & install a new one. SBS: Install a new file.
CimatronCstm.xml	Data	New	Created on run-time.

User-Created Data Files

All user created data files from Cimatron 12.0 or Cimatron 11.0 are copied to the corresponding folders of Cimatron 13.0 during the installation process.

The list of folders from where user created data files are copied is shown below:

Folder Name	Contents
Program Files\3D Systems\Cimatron13.0\Data\IT\var\post	GPP posts
Program Files\3D Systems\Cimatron13.0\Data\IT\var\profiles\ <user_name>< td=""><td>User files</td></user_name><>	User files
Program Files\3D Systems\Cimatron13.0\Data\IT\dat\defdata	Drafting standards
Program Files\3D Systems\Cimatron13.0\Data\templates	Drafting and electrode templates

Appendix A: Memory and Operating System Recommendations

This section provides memory recommendations to run Cimatron 13.0 and the various factors to consider when purchasing hardware and preferred operating systems (OS).



Notes:

- The Swap Disc (virtual memory file) should be twice as big as the RAM.

Job Complexity	Definition	Recommended Memory
Low	<p>Part models and active parts – Simple parts with less than 1000 faces.</p> <p>Assembly and MoldDesign – Assemblies of simple parts containing less than 100 components.</p> <p>CAM – Simple parts and molds.</p>	4Gb – 8Gb
Medium	<p>Part models and active parts – Medium-size parts with less than 3000 faces.</p> <p>Assembly and MoldDesign – Assemblies of medium size parts containing up to 800 components.</p> <p>CAM – Medium complexity parts and molds.</p>	8Gb – 16Gb
High	<p>Active parts (complex parts) – Containing more than 3000 faces.</p> <p>Assembly and MoldDesign – Assemblies of complex parts containing more than 800 components.</p> <p>CAM – Complex parts and molds.</p>	Minimum 16Gb