



# Installation Guide

---

Cimatron Site Manager 2.0 **Release Note**





## Table of Contents

Introduction .....	1
Cimatron Site Manager Components .....	2
Installation .....	3
Hardware Requirements .....	3
Software Requirements .....	3
Installation .....	4
Installation Procedure .....	4
Client Access .....	9
Cimatron Site Manager Tool .....	10
User Web Application / Portal .....	10
Cimatron Site Manager Main Dialog .....	11
Main Dialog Table .....	12
Main Dialog Buttons .....	14
Main Dialog Menus - Overview .....	15
Main Dialog Menus – Detailed .....	16
Scheduler Service (Preferences) Dialog .....	20
Dialog Options .....	21
Silent Installation Management Dialog .....	23
Dialog Menu Options .....	24
Dialog Dropdown boxes .....	24
Dialog Table .....	24
Appendix A: Firewall Settings .....	25



# Introduction

The **Cimatron Site Manager** is an Internet Information Services (IIS)-based solution that enables IT Administrators to manage and monitor the installed Cimatron stations in their organization. IT Administrators are able to:

- View a list of installed stations / PCs and licenses / plugs.
- View each station’s version(s) and usage.
- Check for updates and receive notification on available updates from the Cimatron HQ update server.
- Download the Update setup file.
- Schedule silent remote installation of Updates on clients.
- Get IT related information from Cimatron HQ.

The Site Manager tool enables administrators to enforce update policy in the organization and control the update process.



## Cimatron Site Manager

Select	Type	PC Name	Product	32/64	Language	License ID	Current Version	Ready Version	Allow Install	Operating System	CPU	RAM	G-Card	G-Card Driver	Comment
<input type="radio"/>	Network	PC-FERK-W7	DIE QUOTE	x64	EN	00155d64290f	DQ2.0	DQ2.0 P3	<input type="checkbox"/>	W7/S2008R2(64)	Intel(R) C...	8GB	AMD FirePr...	8.982.3.0	
<input type="radio"/>	Network	PC-RESE-W7	Cimatron E	x64	EN	00155d642924	E12.0		<input type="checkbox"/>	W7/S2008R2(64)	Intel(R) C...	8GB	AMD FirePr...	8.982.3.0	
<input type="radio"/>	Network	PC-RESE-W7	DIE QUOTE	x32	EN	00155d642924	DQ2.0 P3		<input type="checkbox"/>	W7/S2008R2(64)	Intel(R) C...	8GB	AMD FirePr...	8.982.3.0	
<input type="radio"/>	Network	PC-RESE-W7	DIE QUOTE	x64	EN	00155d642924	DQ2.0 P3		<input type="checkbox"/>	W7/S2008R2(64)	Intel(R) C...	8GB	AMD FirePr...	8.982.3.0	
<input type="radio"/>	Network	PC-RESE-W7	Cimatron E	x32	EN	00155d642924	E11.0 SP2		<input type="checkbox"/>	W7/S2008R2(64)	Intel(R) C...	8GB	AMD FirePr...	8.982.3.0	
<input type="radio"/>	Network	PC-PIPER-W7	Cimatron E	x32	EN	00155d646205	E11.0 SP1	E11.0 SP2	<input type="checkbox"/>	W7/S2008R2(64)	Intel(R) C...	6GB	ATI FirePr...	9.3.3.0	
<input type="radio"/>	Network	PC-PIPER-W7	Cimatron E	x64	EN	00155d646205	E11.0 P4	E11.0 SP1	<input type="checkbox"/>	W7/S2008R2(64)	Intel(R) C...	6GB	ATI FirePr...	9.3.3.0	QA CAD tea...
<input type="radio"/>	Network	PC-ODESS-W7	Cimatron E	x32	EN	00155d64290f	E11.0 SP1 P6	E11.0 SP2	<input type="checkbox"/>	W7/S2008R2(64)	Intel(R) C...	16GB	NVIDIA Qua...	9.18.13.1115	QA NC Team

A Site Manager server is required when a customer’s client PCs have no direct connection to the internet, and are set up to work with a server (typically, another PC in the customer’s network) that does have internet connection.

It is also required on sites that control and enforce version Updates through a central place.

In addition, sites with many users who wish to reduce the download traffic can use the Site Manager server. This way, any Update is downloaded only once and is saved only on the server directory. All users can access it on the local network.

One Cimatron Site Manager Server can serve multiple 32 and 64-bit clients.

## Cimatron Site Manager Components

The **Cimatron Site Manager** is an HTTP-based application that is installed and run on an Admin computer.

The Site Manager includes:

- A WEB application that shows all the stations that exist on the site.  
The information comes from the clients (Cimatron stations) that are connected to the Admin PC.
- A configurable scheduler service that periodically checks for available updates.  
The scheduler (Cimatron download schedule for Site Manager) can trigger a notification Email for the Administrator that is sent from the HQ whenever a new update is downloaded. The Email text can be set by the Site Manager.
- A connection to the Cimatron HQ server for getting IT-related information.
- An option that enables Administrators to be able to download the Update file, either manually or using the pre-defined scheduler. The file can then be used for distribution to users, using the customer (IT department) inner-organizational tools.  
The updates are downloaded to a specially created share folder – Cimatron Updates.
- An option that enables Administrators to schedule the installation of an Update on the connected clients. This option enables using remote log-in as an administrator, to activate the installation process of an Update in silent mode.  
To run an Update on a client, you must be logged-in as an administrator of the machine.

# Installation

The hardware and software requirements for installing the Cimatron Site Manager on the Admin computer are detailed below:

## Hardware Requirements

The hardware requirements for installing the Cimatron Site Manager are as follows:

- Processor:
  - **Minimum:** Processor Pentium 4 or AMD64.
- Memory (RAM):
  - **Minimum:** 1 Gb
- Free Hard disk space: 2 Gb
- Internet connection and no blocking firewall.

Firewall settings: At some sites it may be required to open firewall access on the Site Manager machine. In general, the installation adds two rules to the Windows firewall inbound list of rules (see details in Appendix A on page 25):

- "Cimatron Site Manager (TCP)": open the protocol TCP, for local port 80 on the local subnet, and limited to SYSTEM services only.
- "Cimatron Site Manager (UDP)": open the protocol UDP, for all local and for all remote ports on the local subnet, and limited to SYSTEM services only.

If other firewalls are used, the rules may be required to be added manually.

## Software Requirements

The software requirements for installing Cimatron Site Manager are as follows:

- The following Windows operating systems are supported:
  - Recommended:**
    - Windows Server 2008, or 2012.
    - Windows 7, Professional/Ultimate Edition
    - Windows 8 or 8.1, Professional/Ultimate Edition
    - Windows 10, Professional/Ultimate Edition
- The Cimatron Site Manager can be installed on a **Virtual** instance of Windows.
- Internet browser (tested with Internet Explorer 11, Chrome and Firefox).



**Note:** .NET Framework 4.5 is an installation prerequisite.

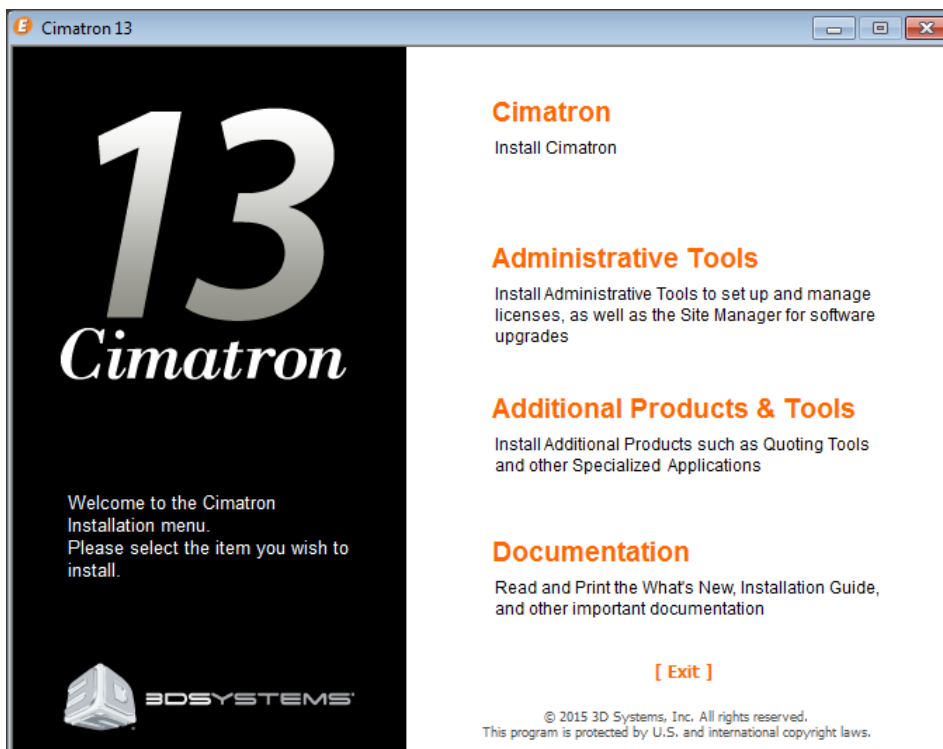
## Installation

Install the Cimatron Site Manager on the Admin computer from the Cimatron release DVD. The Admin computer should have internet access.

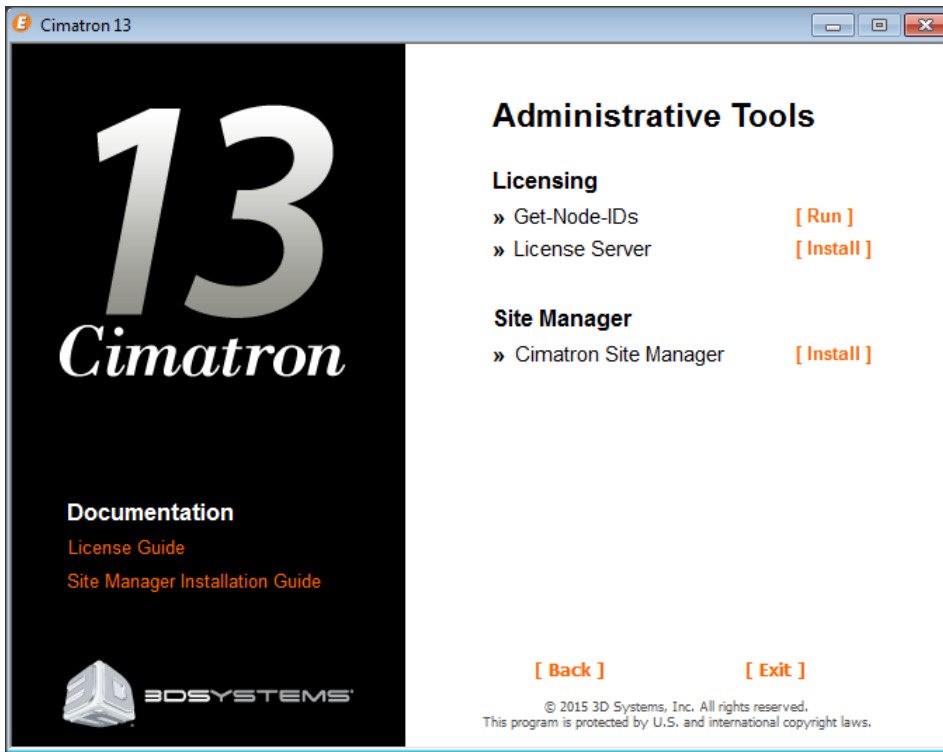
## Installation Procedure

Prepare the Admin computer for installation, as follows:

1. Ensure that you have at least 2 Gb free on the disk where your **Windows Temp** directory is defined (even if you are installing Cimatron 13.0 on another disk).
2. Insert the Cimatron installation **DVD** into the drive.
3. The Cimatron installation menu (**Autorun**) is displayed. Click the **Administrative Tools** item.



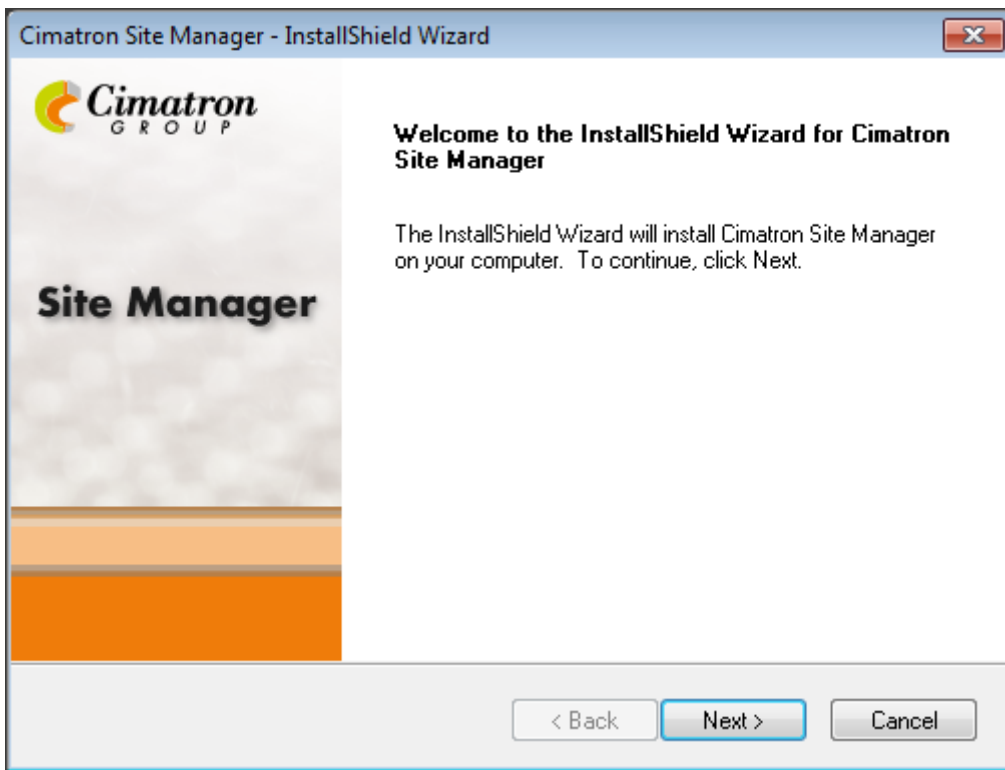
4. The Cimatron **Administrative Tools** installation dialog is displayed. Select the **Cimatron Site Manager** item.



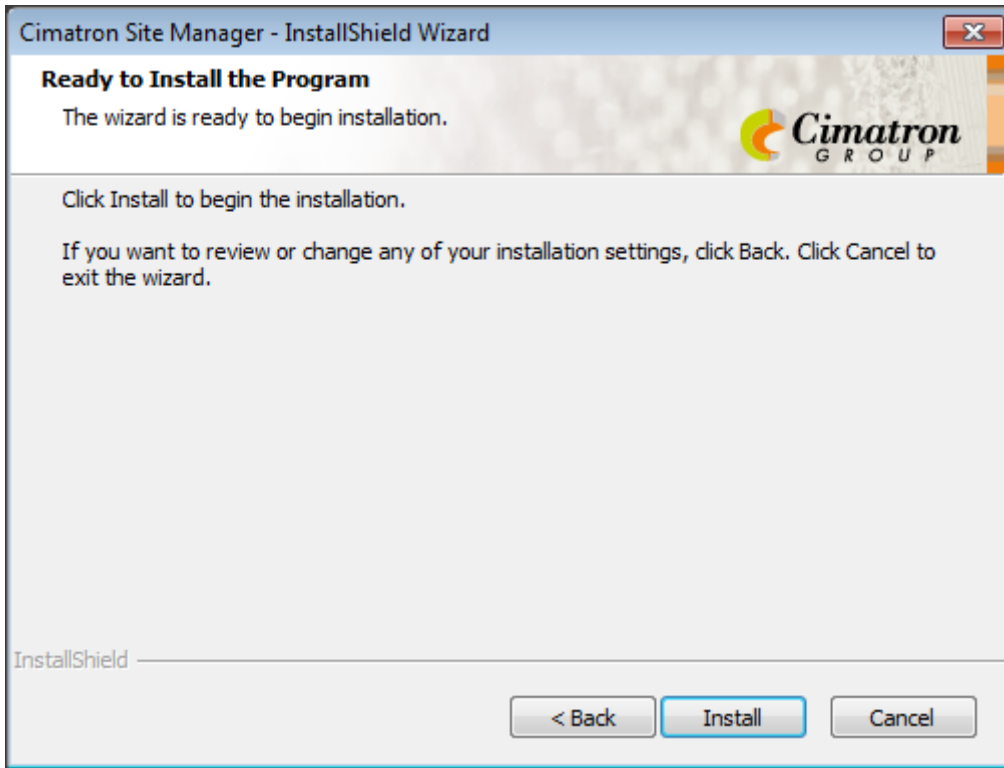
5. Select the **Cimatron Site Manager** item. The Site Manager preliminary screen is displayed.



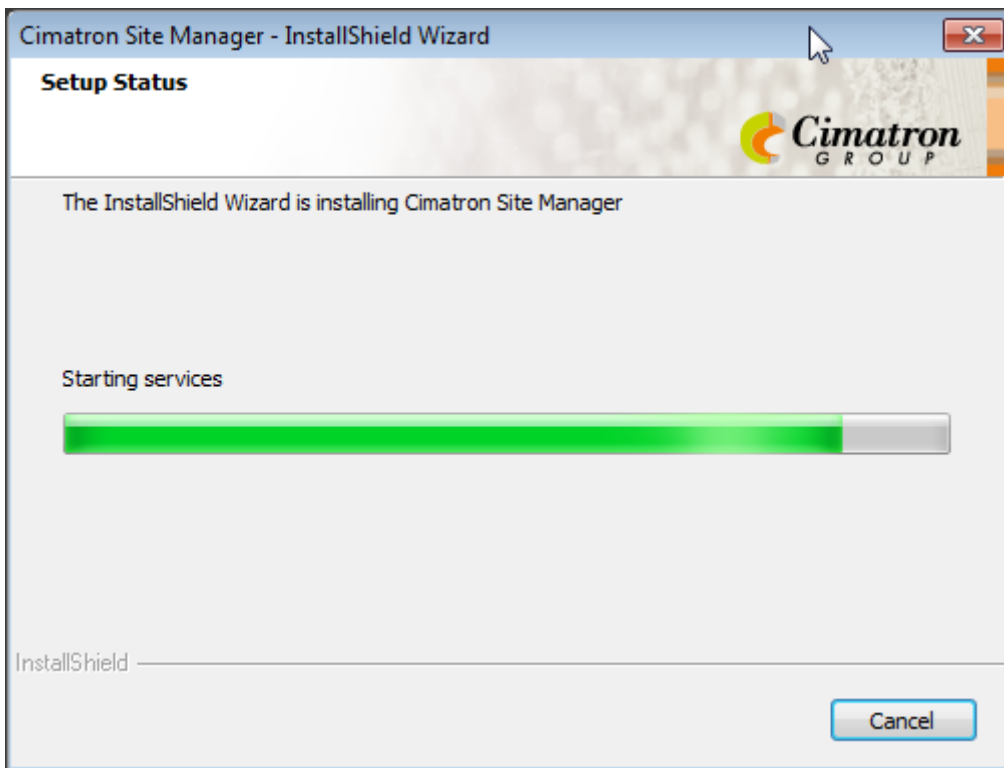
6. After some prerequisite installation screens, the **Cimatron Site Manager Welcome** dialog is displayed. Click **Next**.

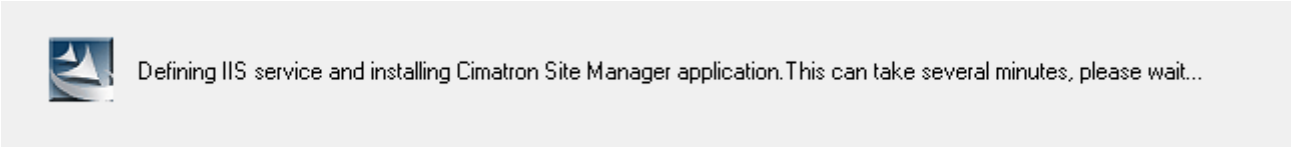


- 7. The **Ready to Install Program** dialog is displayed. Click **Install**.

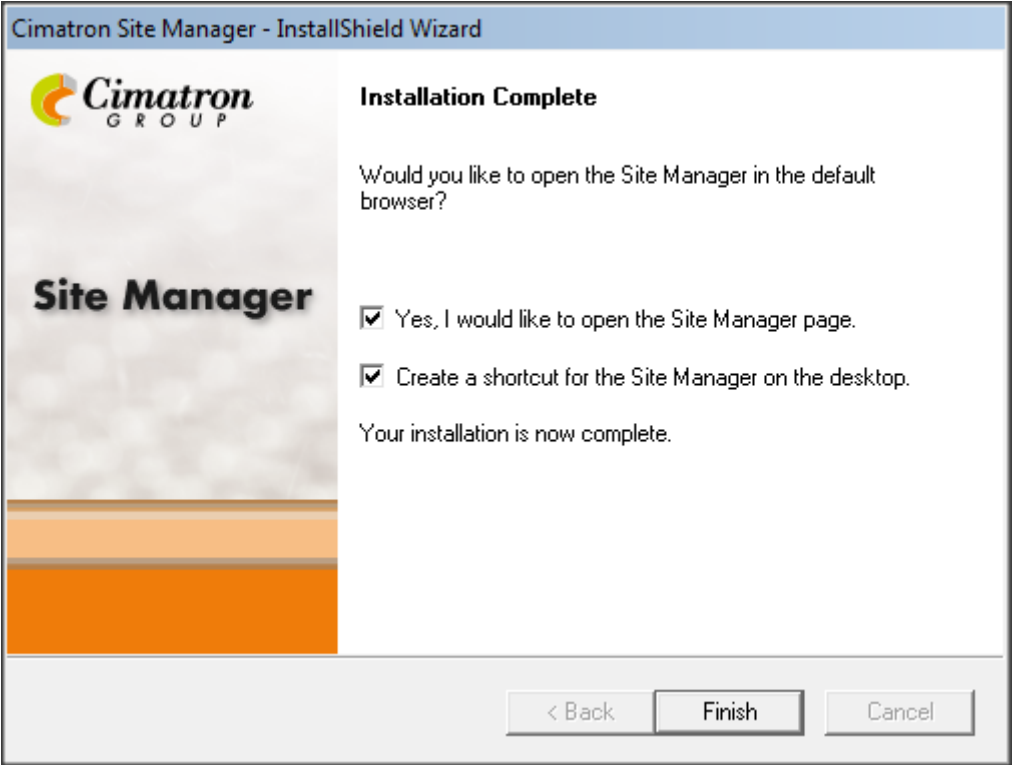


- 8. The Cimatron Site Manager starts installing the files.



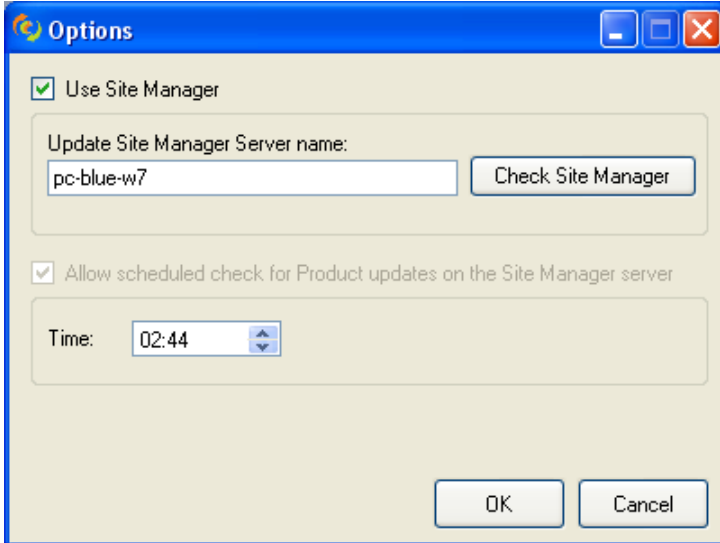


- 9. When the installation is complete, select the required checkboxes and click **Finish** to exit the installation procedure.



## Client Access

All clients (Cimatron stations) are connected (via their PC names or IP addresses) to a pre-defined Admin PC. This connection is enabled from the client computers via a dialog displayed from the relevant Cimatron Control Panel dialog (for example, Cimatron Control Panel: (Main Menu > Cimatron Updates > Options button)), as shown below:



See the Cimatron Online Help for a detailed explanation of this dialog.

<p><b>Use Site Manager</b></p>	<p>Use the Site Manager to manage the product updates. This checkbox is <i>unselected</i> by default.</p> <p>When this checkbox is selected, the following additional options become available:</p> <ul style="list-style-type: none"> <li>• <b>Update Site Manager Server Name:</b> Enter the computer name that is used as the site manager server. For example: “pc-blue-w7”.</li> <li>• <b>Check Site Manager:</b> A button that checks the availability of the site manager according to the entered name.</li> </ul> <p>If this checkbox is selected and a legal server name is entered, the client PC is added as a ‘<b>Network</b>’ type connection to the Admin PC – see page 12. If the checkbox is later unselected, the client PC will, by default, be automatically ignored from the list of connected PCs after 30 days (this can be configured in the <b>Scheduler Service</b> dialog – see page 20.) It can also be removed manually.</p>
<p><b>Allow Scheduled Download of Product Updates</b></p>	<p>Enable scheduled downloads of available updates. This helps to reduce the overall installation time when you choose to install an update (if the update has already been downloaded, the download part of the update process is skipped). This checkbox is <i>selected</i> by default.</p> <p>The scheduler downloads the updates of all Cimatron products on your computer. In the case of an error, the process is terminated.</p> <p>When this checkbox is selected, the <b>Time</b> field becomes available:</p> <ul style="list-style-type: none"> <li>• <b>Time:</b> Set the time when to schedule the start of the download.</li> </ul>

Select **OK** to implement any changes to the settings in the dialog; select **Cancel** to cancel any changes.

# Cimatron Site Manager Tool

This tool consists of two components:

- A user web application – run on a need basis. See page 10 (below).
- A scheduler service – always run and restarted after a reboot. See page 20.

## User Web Application / Portal

This is a Web application that shows all the stations and licenses that exist for the customer.

The information comes from the clients (Cimatron stations) that are connected to the Admin PC. The information comes from the client's Update tool – see **Client Access** on page 9.

To invoke the web application, open an internet browser and use the URL **http://<localhost>/cimatronsitemanager** where <localhost> is either the PC name or the IP address; for example: <http://pc-blue-w7/cimatronsitemanager>.

The Cimatron Site Manager dialog is displayed in the internet browser. A menu option in this dialog enables the display of an intermediate login dialog before the Cimatron Site Manager dialog is displayed.

The Cimatron Site Manager dialog performs the following:

- Displays a list of installed stations / PCs and licenses / plugs.
- Displays each station's version(s) and license.
- Checks for updates and receives notification on available updates from the Cimatron HQ update server.
- Downloads the Update setup file.
- Ability to schedule remote updates on clients.
- Gets IT related information from Cimatron HQ.

## Cimatron Site Manager Main Dialog

The Cimatron Site Manager main dialog displays a list of the computers at a site, showing (for each PC) the current version of Cimatron software installed, whether updates are available and, if so, how they should be installed.

In addition, the dialog displays the latest Cimatron version number and also whether “special” downloads are available (in the example below the Site Manager and License Server have updates). Download or ignore these updates, as required.

In the table, the system can either show the ‘Allow Install’ column or the ‘Approved for Silent’ column, depending on the options selected. See the **Main Dialog Table** parameters section on page 12.

The Site Manager main dialog showing the ‘Allow Install’ column:



Cimatron Site Manager

Manage ▶ Information ▶ Help ▶
Logout

☀ Site Manager Update Available (2.0001.0000.000)
Download
Ignore

☀ License Server Update Available (5.0001.0000.001)
Download
Ignore

Latest CimatronE version: **E12.0**

🔄
Add PC
Edit PC
Delete PC
PC History
Stop All Downloads

Select	Type	PC Name	Product	32/64	Language	License ID	Current Version	Ready Version	Allow Install	Operating System	CPU	RAM	G-Card	G-Card Driver	Comment
<input type="radio"/>	Network	PC-FERK-W7	DIE QUOTE	x64	EN	00155d64290f	DQ2.0	DQ2.0 P3	<input type="checkbox"/>	W7/S2008R2(64)	Intel(R) C...	8GB	AMD FirePr...	8.982.3.0	
<input type="radio"/>	Network	PC-RESE-W7	Cimatron E	x64	EN	00155d642924	E12.0		<input type="checkbox"/>	W7/S2008R2(64)	Intel(R) C...	8GB	AMD FirePr...	8.982.3.0	
<input type="radio"/>	Network	PC-RESE-W7	DIE QUOTE	x32	EN	00155d642924	DQ2.0 P3		<input type="checkbox"/>	W7/S2008R2(64)	Intel(R) C...	8GB	AMD FirePr...	8.982.3.0	
<input type="radio"/>	Network	PC-RESE-W7	DIE QUOTE	x64	EN	00155d642924	DQ2.0 P3		<input type="checkbox"/>	W7/S2008R2(64)	Intel(R) C...	8GB	AMD FirePr...	8.982.3.0	
<input type="radio"/>	Network	PC-RESE-W7	Cimatron E	x32	EN	00155d642924	E11.0 SP2		<input type="checkbox"/>	W7/S2008R2(64)	Intel(R) C...	8GB	AMD FirePr...	8.982.3.0	
<input type="radio"/>	Network	PC-PIPER-W7	Cimatron E	x32	EN	00155d646205	E11.0 SP1	E11.0 SP2	<input type="checkbox"/>	W7/S2008R2(64)	Intel(R) C...	6GB	ATI FirePr...	9.3.3.0	
<input type="radio"/>	Network	PC-PIPER-W7	Cimatron E	x64	EN	00155d646205	E11.0 P4	E11.0 SP1	<input type="checkbox"/>	W7/S2008R2(64)	Intel(R) C...	6GB	ATI FirePr...	9.3.3.0	QA CAD tea...
<input type="radio"/>	Network	PC-ODESS-W7	Cimatron E	x32	EN	00155d64290f	E11.0 SP1 P6	E11.0 SP2	<input type="checkbox"/>	W7/S2008R2(64)	Intel(R) C...	16GB	NVIDIA Qua...	9.18.13.1115	QA NC Team

The Site Manager main dialog showing the ‘Approved for Silent’ column:



Cimatron Site Manager

Manage ▶ Information ▶ Help ▶
Logout

☀ Site Manager Update Available (2.0001.0000.000)
Download
Ignore

☀ License Server Update Available (5.0001.0000.001)
Download
Ignore

Latest CimatronE version: **E12.0**

🔄
Add PC
Edit PC
Delete PC
Disapprove Silent
PC History
Stop All Downloads

Select	Type	PC Name	Product	32/64	Language	License ID	Current Version	Ready Version	Approved for Silent	Operating System	CPU	RAM	G-Card	G-Card Driver	Comment
<input type="radio"/>	Network	PC-FERK-W7	DIE QUOTE	x64	EN	00155d64290f	DQ2.0	DQ2.0 P3		W7/S2008R2(64)	Intel(R) C...	8GB	AMD FirePr...	8.982.3.0	
<input type="radio"/>	Network	PC-RESE-W7	Cimatron E	x64	EN	00155d642924	E12.0			W7/S2008R2(64)	Intel(R) C...	8GB	AMD FirePr...	8.982.3.0	
<input type="radio"/>	Network	PC-RESE-W7	DIE QUOTE	x32	EN	00155d642924	DQ2.0 P3			W7/S2008R2(64)	Intel(R) C...	8GB	AMD FirePr...	8.982.3.0	
<input type="radio"/>	Network	PC-RESE-W7	DIE QUOTE	x64	EN	00155d642924	DQ2.0 P3			W7/S2008R2(64)	Intel(R) C...	8GB	AMD FirePr...	8.982.3.0	
<input type="radio"/>	Network	PC-RESE-W7	Cimatron E	x32	EN	00155d642924	E11.0 SP2			W7/S2008R2(64)	Intel(R) C...	8GB	AMD FirePr...	8.982.3.0	
<input type="radio"/>	Network	PC-PIPER-W7	Cimatron E	x32	EN	00155d646205	E11.0 SP1	E11.0 SP2		W7/S2008R2(64)	Intel(R) C...	6GB	ATI FirePr...	9.3.3.0	
<input type="radio"/>	Network	PC-PIPER-W7	Cimatron E	x64	EN	00155d646205	E11.0 P4	E11.0 SP1		W7/S2008R2(64)	Intel(R) C...	6GB	ATI FirePr...	9.3.3.0	QA CAD tea...
<input type="radio"/>	Network	PC-ODESS-W7	Cimatron E	x32	EN	00155d64290f	E11.0 SP1 P6	E11.0 SP2		W7/S2008R2(64)	Intel(R) C...	16GB	NVIDIA Qua...	9.18.13.1115	QA NC Team

## Main Dialog Table

The Cimatron Site Manager dialog displays a table showing the following:

- A list of installed stations / PCs and licenses / plugs.
- Each station's version(s) and license.

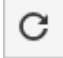
The default column sort order of the table is by PC Name, however, all the columns of the table are sortable. The Cimatron Site Manager table contains the following columns:

<b>Select</b>	Select a PC for an Edit or Delete operation using the buttons at the bottom of the table.
<b>Type</b>	The type of connection to the Admin station. <ul style="list-style-type: none"> <li>• <b>Network</b> = A client PC that is identified automatically when it is configured to work with Site Manager -- see <b>Client Access</b> on page 9.</li> <li>• <b>Manual</b> – A client PC manually added by the Administrator; for example a home PC that is not connected to the network, but has a Cimatron license. If a PC with the same name as the manually added PC is later connected to the Admin station, the entry Type will automatically be updated to “Network”.</li> </ul>
<b>PC Name</b>	The client PC name.
<b>Product</b>	The Cimatron product used on the client PC; for example, Cimatron.
<b>32/64</b>	The type of product installed on the client PC; 32 or 64-bit installation. There may be two entries for the same PC, if it has both the 32-bit and the 64-bit versions installed. From Cimatron 13.0, only the 64-bit version is supplied.
<b>Language</b>	Displays the language defined when running Cimatron. The default language is English (EN).
<b>License ID</b>	License ID of the client PC (Node or MAC).
<b>Current Version</b>	The product version currently installed on the client PC. The version number is displayed in <b>GREEN</b> if the Current version is up-to-date; otherwise it will be displayed in <b>BLACK</b> .
<b>Ready Version</b>	The next Service Pack or Update for the client PC's Current Version. The version number is displayed in <b>RED</b> when there is a newer version that was not downloaded yet to the share folder created by the Site Manager Service. The version number is displayed in <b>GREEN</b> when there is a newer version that is available (in the share folder) for update.

<b>Allow Install</b>	<p>Update permission (checkbox – not checked by default). Enable or disable a version update notification appearing on client PCs.</p> <p>When checked, the client PC can be notified of available updates (via the Cimatron Control Panel [Main Menu &gt; Cimatron Updates]).</p> <p>The default for all new client PC can be set from the <b>Scheduler Service</b> dialog – see page 20.</p> <p>This column is only available if the <b>By Update Notifications</b> option is selected in the <b>Scheduler Service</b> dialog; see page 20.</p>
<b>Approved for Silent</b>	<p>Approved for automatic scheduled silent installation of upgrades. Silent upgrades are upgrades that do not require any user actions to complete an installation (they are automatically installed at the next scheduled time).</p> <p>The silent installation approval for a client can be set from the menu option Manage &gt; Silent Installation Management; see page 23.</p> <p>This column (and the <b>Silent Installation Management</b> menu option) are only available if the <b>By Scheduled Silent Upgrade</b> option is selected in the <b>Scheduler Service</b> dialog; see page 20.</p>
<b>Operating System</b>	Operating system installed on the client computer.
<b>CPU</b>	Type of CPU on the client computer.
<b>RAM</b>	Total RAM memory of the client computer.
<b>G-Card</b>	Graphics Card used in the client computer.
<b>G-Card Driver</b>	Graphics Card driver used in the client computer.
<b>Comment</b>	Free updatable text field.

## Main Dialog Buttons

The following buttons are available below the table:

<b>Download / Ignore</b>	When																
	Refresh the displayed data.																
<b>Add PC</b>	<p>Open a new <b>Manual</b> type line at the bottom of the list. The following dialog is displayed:</p> <div data-bbox="391 594 1481 1062" style="border: 1px solid black; padding: 5px;"> <div style="background-color: #f4a460; text-align: center; padding: 2px;"><b>Add New PC</b></div> <table style="width: 100%; border-collapse: collapse;"> <tr> <td style="width: 50%; padding: 5px;">* Type <input type="text" value="Manual"/></td> <td style="width: 50%; padding: 5px;">* Operating System <input type="text" value=""/></td> </tr> <tr> <td style="padding: 5px;">* PC Name <input type="text" value=""/></td> <td style="padding: 5px;">CPU <input type="text" value=""/></td> </tr> <tr> <td style="padding: 5px;">Product <input type="text" value="Cimatron E"/></td> <td style="padding: 5px;">RAM <input type="text" value=""/></td> </tr> <tr> <td style="padding: 5px;">32/64 <input type="text" value="x32"/></td> <td style="padding: 5px;">G-Card <input type="text" value=""/></td> </tr> <tr> <td style="padding: 5px;">License ID <input type="text" value=""/></td> <td style="padding: 5px;">G-Card Driver <input type="text" value=""/></td> </tr> <tr> <td style="padding: 5px;">Current Version <input type="text" value=""/></td> <td style="padding: 5px;">Language <input type="text" value=""/></td> </tr> <tr> <td colspan="2" style="padding: 5px;">Comment <input type="text" value=""/></td> </tr> <tr> <td colspan="2" style="text-align: center; padding: 5px;"> <input type="button" value="Create"/> <input type="button" value="Cancel"/> </td> </tr> </table> </div> <p>The minimum required fields are:  <b>PC Name, Product, 32/64, Operating System.</b>                      When setting a language, select the language from the dropdown list.</p>	* Type <input type="text" value="Manual"/>	* Operating System <input type="text" value=""/>	* PC Name <input type="text" value=""/>	CPU <input type="text" value=""/>	Product <input type="text" value="Cimatron E"/>	RAM <input type="text" value=""/>	32/64 <input type="text" value="x32"/>	G-Card <input type="text" value=""/>	License ID <input type="text" value=""/>	G-Card Driver <input type="text" value=""/>	Current Version <input type="text" value=""/>	Language <input type="text" value=""/>	Comment <input type="text" value=""/>		<input type="button" value="Create"/> <input type="button" value="Cancel"/>	
* Type <input type="text" value="Manual"/>	* Operating System <input type="text" value=""/>																
* PC Name <input type="text" value=""/>	CPU <input type="text" value=""/>																
Product <input type="text" value="Cimatron E"/>	RAM <input type="text" value=""/>																
32/64 <input type="text" value="x32"/>	G-Card <input type="text" value=""/>																
License ID <input type="text" value=""/>	G-Card Driver <input type="text" value=""/>																
Current Version <input type="text" value=""/>	Language <input type="text" value=""/>																
Comment <input type="text" value=""/>																	
<input type="button" value="Create"/> <input type="button" value="Cancel"/>																	
<b>Edit PC</b>	<p>Edit a selected PC.                      For <b>Manual</b> types, everything can be edited except for the first four fields.                      For <b>Network</b> types, only the <b>Comment</b> field can be edited.</p>																
<b>Delete PC</b>	Delete a selected PC from the list of PCs.																
<b>Disapprove Silent</b>	<p>Delete the Silent installation approval for the selected PC.                      The Silent installation mode is set in the <b>Scheduler Service</b> dialog (see page 20) and, for specific PCs, in the <b>Silent Installation Management</b> dialog (see page 23).</p>																
<b>PC History</b>	Display a dialog showing the version download history for the selected PC. The history is per PC and per Product.																
<b>Stop All Downloads</b>	Stop all current downloads (for all PCs). Any downloads currently active are stopped and a message is displayed in the appropriate 'Ready Version' row.																

## Main Dialog Menus - Overview

The following menus are available in the Cimatron Site Manager dialog:

- Refresh
- Manage
  - Manual Download
  - Preferences
  - License Manager
  - Open Download Folder
  - Silent Installation Management for Update
- Information
  - Download Activity Log
  - Show Update Info
  - Top 20 Used Graphics Cards
  - List of Supported Graphic Cards
  - IT Tips
- Help
  - About
  - Installation Guide
  - Online Help
- Logout

## Main Dialog Menus – Detailed

### Refresh

Refresh the display. This option checks for available updates for each PC in the list.

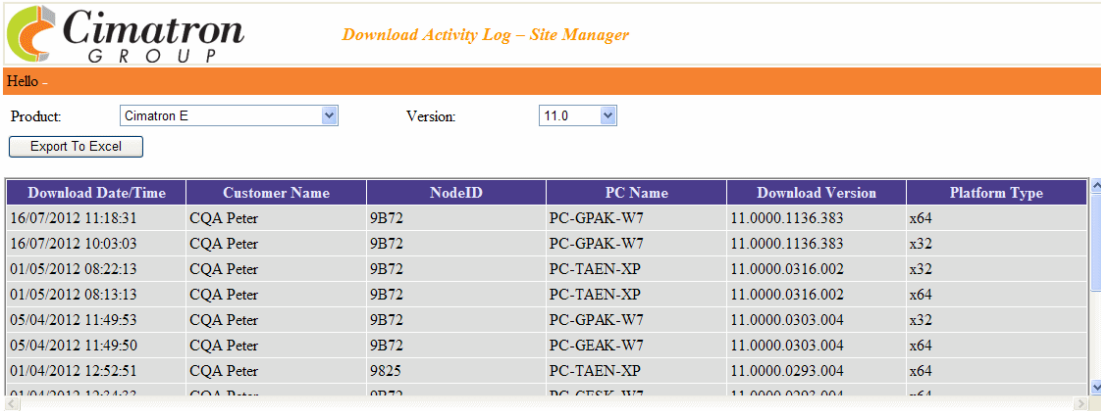
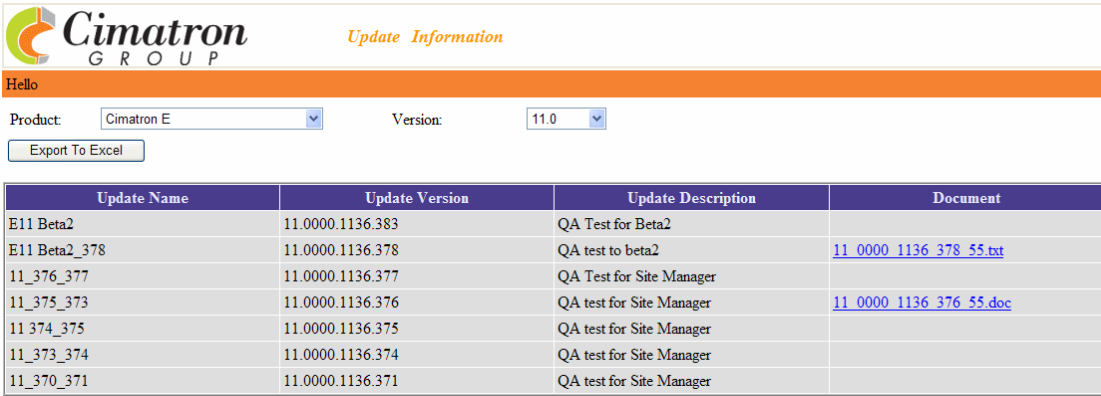
### Manage

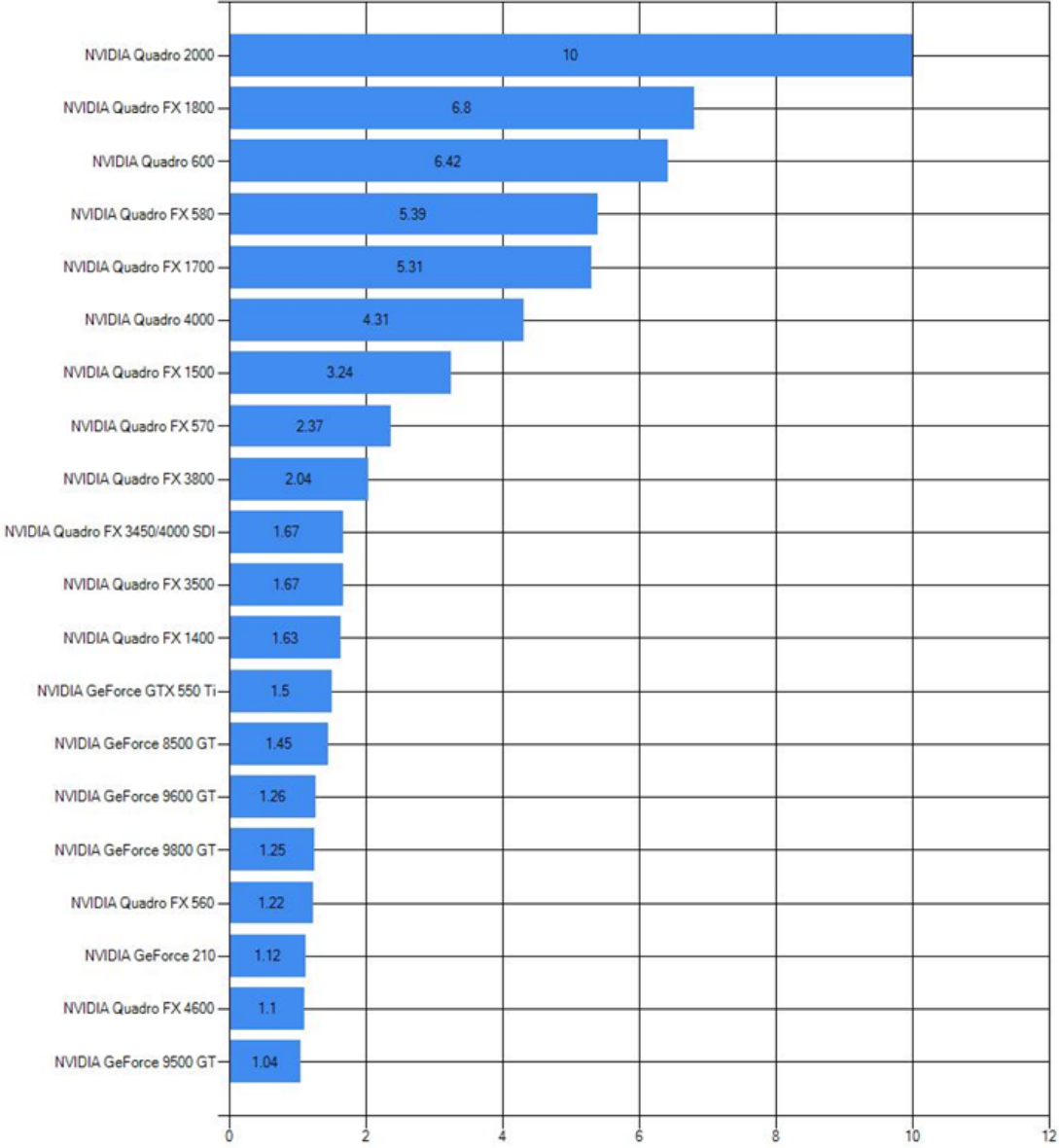
Manage the Site Manager using the following options:

<b>Manual Download</b>	Start a manual download. This will download all updates that appear in <b>RED</b> in the <b>Ready Version</b> field of the table. See the explanation of the <b>Ready Version</b> column in the <b>Main Dialog Table</b> parameters section on page 12.
<b>Preferences</b>	Display the <b>Scheduler Service</b> dialog. See page 20. This dialog enables you to set download, installation and general options.
<b>License Manager</b>	Load the <b>License Manager</b> with the option "All Licenses".
<b>Open Download Folder</b>	When running in Internet Explorer, this opens the windows file explorer where the download folder is defined. When running in a different browser, this opens a dialog showing the folder location.
<b>Silent Installation Management for Update</b>	Display the <b>Silent Installation Management</b> dialog. See page 23. This dialog enables the administrator to 'approve' and schedule specific updates to be silently installed on selected clients. The <b>Silent Installation Management</b> menu option is only available if the <b>By Scheduled Silent Upgrade</b> option is selected in the <b>Scheduler Service</b> dialog; see page 20.

### Information

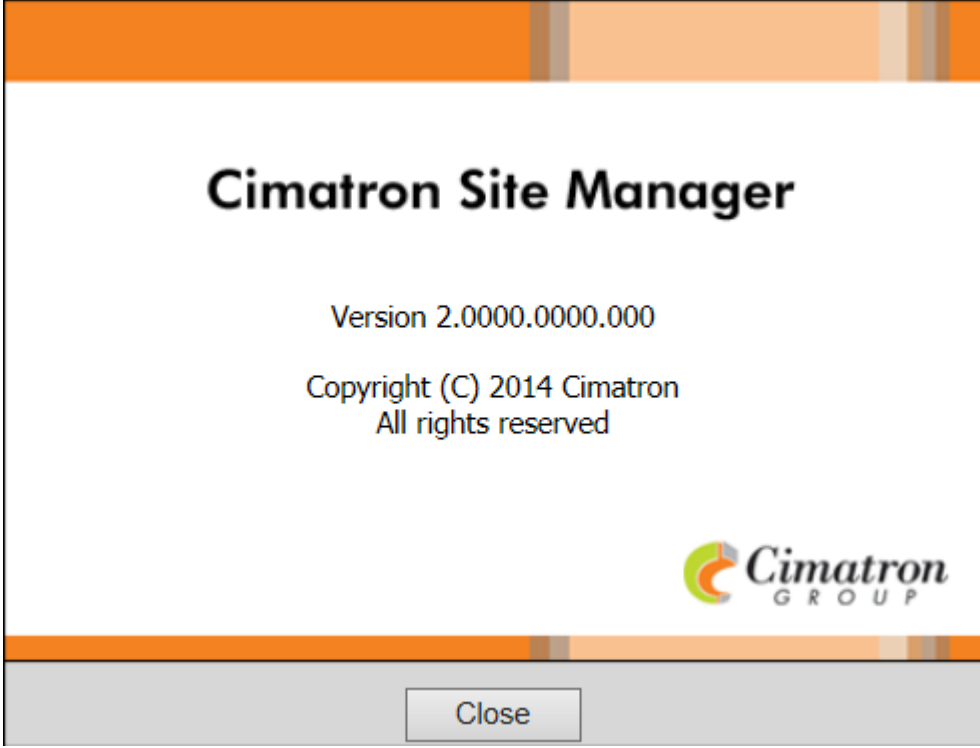
Display various information using the following options:

<p><b>Download Activity Log</b></p>	<p>Display the customer's activity log. This shows the product usage of each client PC.</p>  <p>To display the required data, select the appropriate Product name and Version number from the dropdown lists. If required, export the report to Microsoft Excel ®</p>
<p><b>Show Update Info</b></p>	<p>Display information on available updates.</p>  <p>To display the required data, select the appropriate Product name and Version number from the dropdown lists. If required, export the report to Microsoft Excel ®</p>

<p><b>Top 20 Used Graphics Cards</b></p>	<p>Display a bar chart showing the percentage numbers of the top 20 graphic cards used for Cimatron worldwide.</p>  <table border="1"> <thead> <tr> <th>Graphics Card Model</th> <th>Percentage</th> </tr> </thead> <tbody> <tr><td>NVIDIA Quadro 2000</td><td>10</td></tr> <tr><td>NVIDIA Quadro FX 1800</td><td>6.8</td></tr> <tr><td>NVIDIA Quadro 600</td><td>6.42</td></tr> <tr><td>NVIDIA Quadro FX 580</td><td>5.39</td></tr> <tr><td>NVIDIA Quadro FX 1700</td><td>5.31</td></tr> <tr><td>NVIDIA Quadro 4000</td><td>4.31</td></tr> <tr><td>NVIDIA Quadro FX 1500</td><td>3.24</td></tr> <tr><td>NVIDIA Quadro FX 570</td><td>2.37</td></tr> <tr><td>NVIDIA Quadro FX 3800</td><td>2.04</td></tr> <tr><td>NVIDIA Quadro FX 3450/4000 SDI</td><td>1.67</td></tr> <tr><td>NVIDIA Quadro FX 3500</td><td>1.67</td></tr> <tr><td>NVIDIA Quadro FX 1400</td><td>1.63</td></tr> <tr><td>NVIDIA GeForce GTX 550 Ti</td><td>1.5</td></tr> <tr><td>NVIDIA GeForce 8500 GT</td><td>1.45</td></tr> <tr><td>NVIDIA GeForce 9600 GT</td><td>1.26</td></tr> <tr><td>NVIDIA GeForce 9800 GT</td><td>1.25</td></tr> <tr><td>NVIDIA Quadro FX 560</td><td>1.22</td></tr> <tr><td>NVIDIA GeForce 210</td><td>1.12</td></tr> <tr><td>NVIDIA Quadro FX 4600</td><td>1.1</td></tr> <tr><td>NVIDIA GeForce 9500 GT</td><td>1.04</td></tr> </tbody> </table>	Graphics Card Model	Percentage	NVIDIA Quadro 2000	10	NVIDIA Quadro FX 1800	6.8	NVIDIA Quadro 600	6.42	NVIDIA Quadro FX 580	5.39	NVIDIA Quadro FX 1700	5.31	NVIDIA Quadro 4000	4.31	NVIDIA Quadro FX 1500	3.24	NVIDIA Quadro FX 570	2.37	NVIDIA Quadro FX 3800	2.04	NVIDIA Quadro FX 3450/4000 SDI	1.67	NVIDIA Quadro FX 3500	1.67	NVIDIA Quadro FX 1400	1.63	NVIDIA GeForce GTX 550 Ti	1.5	NVIDIA GeForce 8500 GT	1.45	NVIDIA GeForce 9600 GT	1.26	NVIDIA GeForce 9800 GT	1.25	NVIDIA Quadro FX 560	1.22	NVIDIA GeForce 210	1.12	NVIDIA Quadro FX 4600	1.1	NVIDIA GeForce 9500 GT	1.04
Graphics Card Model	Percentage																																										
NVIDIA Quadro 2000	10																																										
NVIDIA Quadro FX 1800	6.8																																										
NVIDIA Quadro 600	6.42																																										
NVIDIA Quadro FX 580	5.39																																										
NVIDIA Quadro FX 1700	5.31																																										
NVIDIA Quadro 4000	4.31																																										
NVIDIA Quadro FX 1500	3.24																																										
NVIDIA Quadro FX 570	2.37																																										
NVIDIA Quadro FX 3800	2.04																																										
NVIDIA Quadro FX 3450/4000 SDI	1.67																																										
NVIDIA Quadro FX 3500	1.67																																										
NVIDIA Quadro FX 1400	1.63																																										
NVIDIA GeForce GTX 550 Ti	1.5																																										
NVIDIA GeForce 8500 GT	1.45																																										
NVIDIA GeForce 9600 GT	1.26																																										
NVIDIA GeForce 9800 GT	1.25																																										
NVIDIA Quadro FX 560	1.22																																										
NVIDIA GeForce 210	1.12																																										
NVIDIA Quadro FX 4600	1.1																																										
NVIDIA GeForce 9500 GT	1.04																																										
<p><b>List of Supported Graphic Cards</b></p>	<p>Display the list of supported graphics cards.</p>																																										
<p><b>IT Tips</b></p>	<p>Display a list of IT Tips to help solve common issues.</p>																																										

**Help**

Display Help-related information.

<p><b>About</b></p>	<p>Display information about the Site Manager (version number, etc.), for example:</p> 
<p><b>Installation Guide</b></p>	<p>Display the Cimatron Installation Guide.</p>
<p><b>Online Help</b></p>	<p>Display the Cimatron Site Manager Online Help.</p>

**Logout**

Logout of the Cimatron Site Manager. The **Logout** option is only available if the **Skip Login Page** option is unselected in the **Scheduler Service** dialog. See page 20.

## Scheduler Service (Preferences) Dialog

The **Scheduler Service** dialog is displayed when you select the menu option **Manage > Preferences**. This dialog enables you to set download, installation and general options.

**Cimatron GROUP**

### Cimatron Site Manager - Preferences

[Back To Home Page](#)

**Download Options:**

Download time of available Updates:

**Email notification address & text:**

To:

Subject:

Body:

**Client Installation Options:**

By Update Notifications

By default allow new clients to be informed of updates

By Scheduled Silent Upgrade

**General**

Skip Login Page (Default user/pass = admin/admin)

Don't show clients that didn't report after:  days. (0 = show all)

© 2013 Cimatron (2022013)

See the dialog options below.

## Dialog Options

The following options are displayed:

<p><b>Download time of available Updates</b></p>	<p>Schedule checks for software updates and for downloading files.</p> <p>Every 24 hours, the scheduler service will automatically check for available updates for each client PC. If a newer version is available and was not already (manually) downloaded, then the download starts. When the download is completed, the service does the following, based on user settings:</p> <ul style="list-style-type: none"> <li>• Starts the Cimatron Site Manager application.</li> <li>• Sends a notification Email to a pre-defined address – see below. The text is localized by the local Cimatron Provider.</li> </ul>
<p><b>Email notification address &amp; text</b></p>	<p>A notification Email for the Administrator can be defined. This Email is sent whenever a new update is available. The default Email text is localized by the local Cimatron Provider, however, the Administrator can change the text as required.</p>
<p><b>By Update Notifications</b></p>	<p>Approve clients to receive Update notifications. If this option is selected, the <b>Allow Install</b> column is displayed in the main dialog (instead of the <b>Approved for Silent</b> column). See page 11.</p> <p>If this option is selected, the checkbox option below is selected by default.</p> <p><b>By default allow new clients to be informed of updates:</b></p> <p>This default setting for all new client PCs, automatically checks the <b>Allow Install</b> checkbox (in the main dialog) for the newly added client. This enables new clients to receive notifications of available updates. See page 11.</p>
<p><b>By Scheduled Silent Upgrade</b></p>	<p>Approve clients for scheduled silent upgrades. Silent upgrades are upgrades that do not require any user actions to complete an installation (they are automatically installed at the next scheduled time). If the client is connected to the Site Manager and a specified upgrade is available, the upgrade is installed in silent mode.</p> <p>If this option is selected, the following occurs:</p> <ol style="list-style-type: none"> <li>1. The <b>Approved for Silent</b> column is displayed in the main dialog (instead of the <b>Allow Install</b> column). See page 11.</li> <li>2. The menu option <b>Manage &gt; Silent Installation Management</b> is available. This menu option displays the <b>Silent Installation Management</b> dialog. See page 23.</li> </ol>

<p><b>Skip Login Page</b></p>	<p>Skip the login dialog when invoking the Site Manager. This allows the Site Manager to automatically be displayed when it is invoked. This checkbox is <i>selected</i> by default.</p> <p>If the checkbox is unchecked, the following login dialog is displayed first and, upon correct data entry, the Site Manager is displayed:</p> <div data-bbox="500 369 959 758" data-label="Image"> </div> <p>To reset the password you need to delete the file sitemanager.xml and then restart your PC. The user name and password are then reset to their default values: Admin/Admin.</p> <p>Note that all manual settings and edits will be also set back to their default values.</p>
<p><b>Don't show clients that didn't report after</b></p>	<p>Ignore <b>Network</b> type client PCs that have been inactive for the set number of days. In this case, after the required period, inactive client PCs do not appear in the list and updates are not downloaded.</p> <p>To display all client PCs, irrespective of their active status, enter 0 in the field.</p>

## Silent Installation Management Dialog

The **Silent Installation Management** dialog is displayed when you select the menu option **Manage > Silent Installation Management**. This dialog enables the administrator to ‘approve’ and schedule specific updates to be silently installed on selected clients.

Client PCs that have updates approved for silent installation are shown on the main dialog under the ‘Approved for Silent’ column. See page 11 for example main dialogs.

If the silent installation encounters locked files on the client PC, the client PC is rebooted and the silent installation is performed. Any unsaved files on the client PC will be closed without saving.



**Note:** The **Silent Installation Management** menu option is only available if the **By Scheduled Silent Upgrade** option is selected in the **Scheduler Service** dialog; see page 20.

**Cimatron GROUP**

### Silent Installation Management for Update

[Back To Home Page](#) [Update Log](#)

Product:  Major Ver.:  Update Version:

<input checked="" type="checkbox"/> Approve for Silent Installation	PC Name	Product Name	32/64	Current Version	Already Approved for
<input checked="" type="checkbox"/>	PC-DESK-W7	Cimatron E	x64	E11.0	

For client PCs to appear on this list, they must meet both the following criteria:

1. Their ‘Ready Version’ (the next service pack or update for the client PC’s current version)  $\geq$  the selected ‘Update Version’ (from the dropdown list in this dialog).
2. Their ‘Current Version’  $<$  the selected ‘Update Version’.

The administrator can decide which version to approve for a specific PC. The administrator can select any version between the ‘Current Version’ and the ‘Ready Version’.

The **Apply Changes** button updates the **Silent Installation Management** dialog and also the ‘Approved for Silent’ column in the main dialog. See page 11 for example main dialogs.

## Dialog Menu Options

The following menu options appear at the top of the Silent Installation Management dialog:

<b>Back To Home Page</b>	Return back to the main dialog (the dialog that was displayed before invoking the Silent Installation Management dialog).
<b>Update Log</b>	Open a dialog showing a list of recorded silent installations for approved clients. For each client PC, the start and end time of the installation is displayed. Any problems encountered during the installation (aborts, etc) are also displayed.

## Dialog Dropdown boxes

The following dropdown lists appear at the top of the Silent Installation Management dialog:

<b>Product</b>	A list of Cimatron product. Cimatron is selected by default.
<b>Major Version</b>	A list of the major version releases. The latest major version is selected by default.
<b>Update Version</b>	A list of all the updates that have already been downloaded to the Site Manager. The latest update is selected by default.

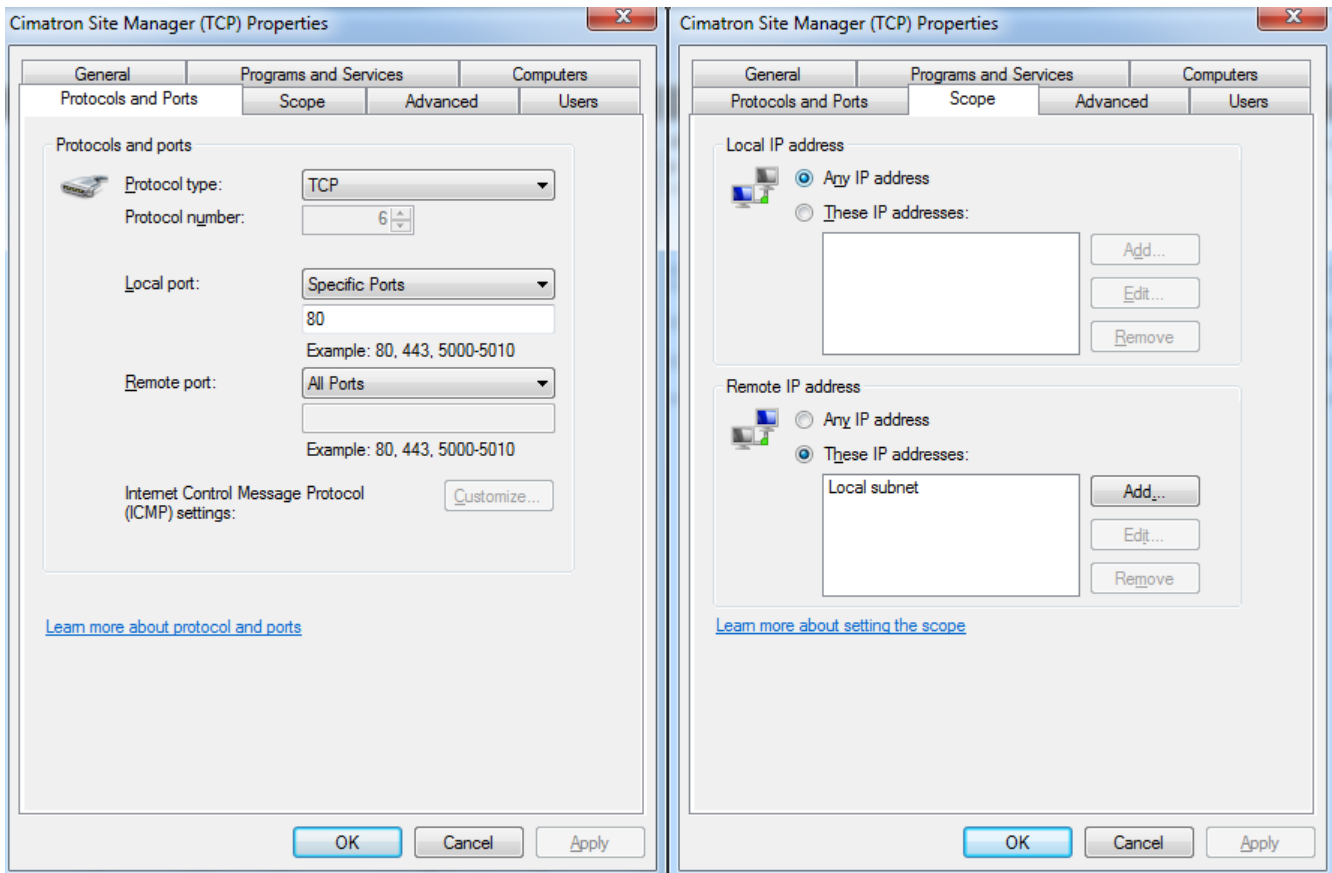
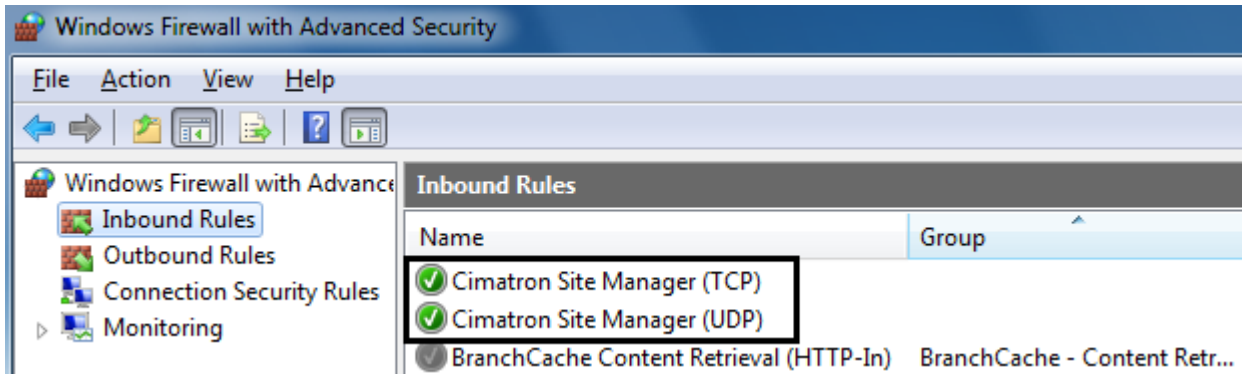
## Dialog Table

The Silent Installation Management dialog table contains the following columns:

<b>Approve for Silent Installation</b>	Checkbox to approve a silent installation of the update.
<b>PC Name</b>	The client PC name.
<b>Product Name</b>	The Cimatron product which is to be updated, for example Cimatron.
<b>32/64</b>	The type of product installed on the client PC; 32 or 64-bit installation. There may be two entries for the same PC, if it has both the 32-bit and the 64-bit versions installed.
<b>Current version</b>	The product version currently installed on the client PC.
<b>Already Approved for Silent</b>	The product version that has already been approved for silent installation. The version number is displayed in <b>GREEN</b> if it is the same as the 'Update Version' appearing in the dropdown list at the top of the dialog; otherwise it will be displayed in <b>BLACK</b> .

# Appendix A: Firewall Settings

Two new rules are added to the firewall:



\* The UDP protocol inbound rule local port, should stay empty (open for all ports).

