

Geomagic® Control™

Complete Metrology Platform



Release Notes

Software: **Geomagic Control**

Version 2015.1.1

Release Date: March2016

TABLE OF CONTENTS

1	INTRODUCTION	1
	COPYRIGHT	1
2	INSTALLATION	2
	SYSTEM REQUIREMENTS	2
	DOWNLOAD AND INSTALL SOFTWARE	2
	ACTIVATE LICENSE	2
3	NEW FEATURES AND ENHANCEMENTS	3
4	FIXED BUGS	4

1 INTRODUCTION

We are pleased to announce the availability of the new version of Geomagic Control. Geomagic Control is the industry's most comprehensive, robust, and accurate 3D metrology solution and automation platform. It delivers the highest accuracy and speed, and most comprehensive automated reporting on the quality of as-built parts for first-article inspection, production inspection, and supplier management using CMM and laser scanning tools.

New features and enhancements in this release were made to improve user's experience on reporting inspection results. In addition to the enhancements, some of minor bug fixes are included in this release.

For more information, please visit www.geomagic.com.

COPYRIGHT

©1993-2016. 3D Systems, Inc. All rights reserved. The content of this manual is furnished for informational use only, is subject to change without notice, and should not be construed as a commitment by 3D Systems, Inc. Any names, places, and/or events in this publication are not intended to correspond or relate in any way to individuals, groups or associations.

SYSTEM REQUIREMENTS

For the latest system requirements information and to learn about specific qualified system configurations, go to the [System Requirements page](#) in the Geomagic Support Center. Some users have had success running system configurations that deviate from the supported list. In such cases, these configurations are not officially supported by 3D Systems, Inc.

Additionally, we test a variety of hardware platforms in combination with the graphics subsystems. While we make every attempt to be as thorough as possible, hardware manufacturers change their products frequently and may be shipping newer products or have discontinued active support for others. Check the support section of the Web site for the latest system requirement information and specific qualified systems.

DOWNLOAD AND INSTALL SOFTWARE

You can download and install the software from gettingstarted.geomagic.com, select the Geomagic Control product, then click the "Download" button to download Geomagic Control.

In addition, you can manually check for any updates using the [Check for Updates](#) command. If a valid maintenance code is activated, and your computer is connected to the Internet, the application will check if a newer version is available and will download it automatically for installation.

ACTIVATE LICENSE

Geomagic Control requires license activation to run the application on your PC. You can choose to use an evaluation license for a 15-day period or activate a permanent license by using a virtual or physical dongle.

After you start your application, the License Utility window opens. The License Utility allows you to activate and use the Geomagic Control software.

NOTE: When you launch the License Utility, you can click the Help button to read the Licensing Guide.

You should have received an email from 3D Systems with your activation code. If you have not received an email from 3D Systems, contact them at Geomagic.Support.Americas@3DSystems.com.

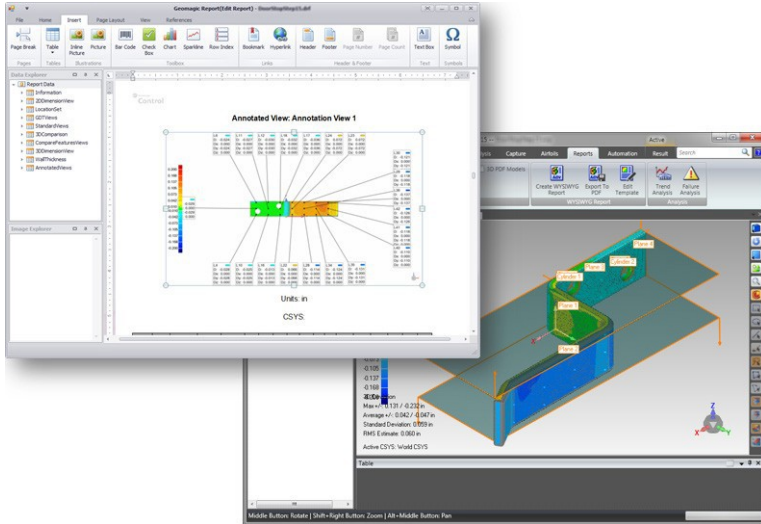
If you are an existing user and have already activated the license on your PC with the previous version of the application, you can run the newer version of the application without re-activating the license.

For more information, go to gettingstarted.geomagic.com, select the Geomagic Control product, then click [Licensing](#).

3 NEW FEATURES AND ENHANCEMENTS

New WYSIWYG Reporting Tool

New attempts in 3D inspection reporting technologies were in this release. The new WYSIWYG Report offers various functions and options that users can experience new ways of customizing an inspection report. With this new WYSIWYG reporting tool, you can easily customize a page layout as in Microsoft Word and quickly add inspection features by dragging and dropping built-in information and use it for future inspection projects. The new WYSIWYG report also allows you to import a Microsoft Word document formatted by .DOCX file format and used it as a report template.



Expanded file format support

You can now import 3D CAD models in a variety of file formats without any additional charge for using the CAD file exchange feature.

The following tables shows a complete list of the CAD file formats supported in the new release.

Format	Application	Version	Extensions
Inventor	Autodesk Inventor®	Up to 2015	.iv, .ipt, .iam
CATIA V4	CATIA® V4	Up to CATIA V4.2.5	.model, .session, .dlv, .exp
CATIA V5	CATIA® V5	CATIA V5 R4 to V5-6R2014	.CATPart, .CATProduct
Creo (Pro/E)	PTC Creo® (Pro/Engineer®)	Creo Elements/Pro 5.0, Parametric(Up to 3.0), Pro/Engineer 16 to Pro/Engineer Wildfire 5	.asm, .prt, .neu, .xas, .xpr
IGES	IGES	IGES 5.1, 5.2, 5.3	.igs, .iges
Parasolid	Parasolid® Text / Binary	Up to v27.0	.x_t, .x_b, .xmt, .xmt_txt
PRC	HOOPS		.prc
UG / NX	Siemens PLM Software's NX™	Unigraphics V11.0 to NX 9.0	.prt, .prt.*
Solid Edge	Solid Edge®	Solid Edge V19 - 20, ST - ST7	.asm, .asm.*, .par, .pwd, .psm
SolidWorks	SOLIDWORKS®	Up to 2015	.sldasm, .sldprt
STEP	STEP	AP 203 E1/E2, AP 214, AP 242	.stp, .step, .stp.z
VDA-FS	VDA-FS	Version 1.0 and 2.0	.vda

The FARO 3D Imager AMP support



The FARO 3D Imager AMP is a high performance non-contact 3D imaging system, capable of collecting millions of points in just seconds.

Using blue light projection technology, the FARO AMP achieves high accuracy point cloud data on parts, assemblies, and tools for inspection and reverse engineering applications.

Built with portability and flexibility in mind, the FARO 3D Imager AMP can easily be deployed as a manual device or in fully automated systems. The portable, rugged, and thermally-stable design of the FARO AMP is right at home on the shop floor or assembly line.

(Source: FARO)

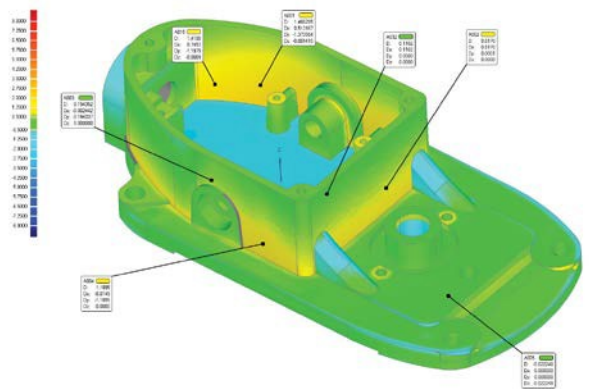
FIXED BUGS

This section lists issues that have been resolved since v2014.4.0:

- GC-1586 PMI Data is not being loaded anymore.
- GC-1601 GD&T Callout does not give consistent results.
- GC-1288 First pair in feature alignment has a deviation in the axis.
- GC-535 A DRF label cannot be set on a 3-pointplane.
- GC-1293 Edit Correspondence always behaves as "Select Through".
- GC-1008 Datum C is created with an offset for GD&T alignment.
- GC-1476 Imported file units change the working units.
- GC-1594 When clicking the Cancel button after the Apply button is clicked in the Fill All command, software crashes.
- GC-1327 "Area Target" option for Point Targets should be sticky

This section lists issues fixed since v2015.0.0:

- GC-1472 Occasionally enter state where Set Test and Set Reference become unavailable.
- GC-1821 GDT Separate Requirements do not always work correctly
- GC-1819 Flatness and Surface Profile outlier processing on not consistent
- GC-1809 Unconstrained Surface Profile is not always offset appropriately



3D Systems, Inc.
 333 Three D Systems Circle | Rock Hill, SC | 29730
www.3dsystems.com

©2015 3D Systems, Inc. All rights reserved.