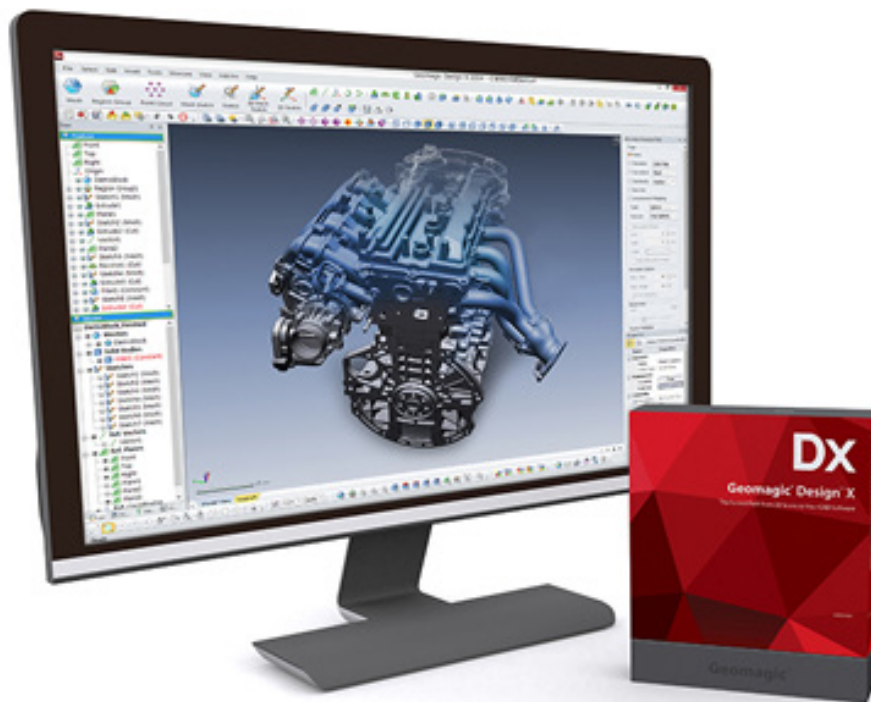


# Geomagic® Design X™

The Fastest Path from 3D Scans  
to Your CAD Software



**Release Notes**

Software: **Geomagic Design X**

Version 2015.2.0

Release Date: March 2015

## TABLE OF CONTENTS

1	INTRODUCTION.....	1
	COPYRIGHT.....	1
2	INSTALLATION.....	2
	SYSTEM REQUIREMENTS.....	2
	DOWNLOAD AND INSTALL SOFTWARE.....	2
	ACTIVATE LICENSE.....	2
3	NEW FEATURES AND ENHANCEMENTS.....	3
4	BUG FIXES.....	4

# 1 INTRODUCTION

We are pleased to announce the availability of the new version of Geomagic Design X. Geomagic Design X is the only reverse engineering software that combines history-based CAD with 3D scan data processing so you can create feature-based, editable solid models compatible with your existing CAD software.

New features in this release were made to support more CAD file formats for import and export and allow you to export 3D models in a interactive 3D PDF file. In addition to expanded file format support and 3D PDF export, this release includes a few enhancements and bug fixes.

For more information, please visit [www.geomagic.com](http://www.geomagic.com).

## COPYRIGHT

©1993-2015. 3D Systems, Inc. All rights reserved. The content of this manual is furnished for informational use only, is subject to change without notice, and should not be construed as a commitment by 3D Systems, Inc. Any names, places, and/or events in this publication are not intended to correspond or relate in any way to individuals, groups or associations. Any similarity or likeness of the names, places, and/or events in this publication to those of any individual, living or dead, place, event, or that of any group or association is purely coincidental and unintentional.

### SYSTEM REQUIREMENTS

For the latest system requirements information and to learn about specific qualified system configurations, go to the [System Requirements](#) page in the Geomagic Support Center. Some users have had success running system configurations that deviate from the supported listed on our website. In such cases, these configurations are not officially supported by 3D Systems, Inc.

Additionally, we test a variety of hardware platforms in combination with the graphics subsystems. While we make every attempt to be as thorough as possible, hardware manufacturers change their products frequently and may be shipping newer products or have discontinued active support for others. Check the support section of the website for the latest system requirement information and specific qualified systems.

### DOWNLOAD AND INSTALL SOFTWARE

You can download and install the software from [gettingstarted.geomagic.com](http://gettingstarted.geomagic.com), select the Geomagic Design X product, then select to download Geomagic Design X.

In addition, automatic software updates are available if you set the **Update Product Automatically** option to **True** in Preferences and a valid maintenance code is activated, and your computer is connected to the Internet. The application will check if a newer version is available and will download it automatically for installation.

You can also manually check if a newer version is available by going to **Help > Check For Update**.

### ACTIVATE LICENSE

Geomagic Design X requires license activation to run the application on your PC. You can choose to use an evaluation license for a 15-day period or activate a permanent license by using a virtual or physical dongle.

After you start your application, the License Utility window opens. The License Utility allows you to activate and use the Geomagic Design X software.

**NOTE: When you launch the License Utility, you can click the Help button to read the Licensing Guide.**

You should have received an email from 3D Systems with your activation code. If you have not received an email from 3D systems, contact them at [Geomagic.Support.Americas@3DSystems.com](mailto:Geomagic.Support.Americas@3DSystems.com).

If you are an existing user and have already activated the license on your PC with the previous version of the application, you can run the newer version of the application without re-activating the license.

For more information, go to [gettingstarted.geomagic.com](http://gettingstarted.geomagic.com), select the Geomagic Design X product, then click Licensing.

### 3 NEW FEATURES AND ENHANCEMENTS

#### Expanded file format support

You can now import and export 3D models in a variety of file formats without any additional charge for using the CAD file exchange feature. The performance of file import and export operations has also been enhanced with a new CAD file exchange module.

The following tables shows a complete list of the CAD file formats supported in the new release.

##### Import

Format	Application	Version	Extensions
ACIS	ACIS® Text / Binary Part	Up to v23.0	.sat, .sab
Inventor	Autodesk Inventor®	Up to 2015	.iv, .ipt, .iam
CATIA V4	CATIA® V4	Up to CATIA V4.2.5	.model, .session, .dlv, .exp
CATIA V5	CATIA® V5	CATIA V5 R4 to V5-6R2014	.CATDrawing, .CATPart, .CATProduct, .CATShape
Creo (Pro/E)	PTC Creo® (Pro/Engineer®)	Creo Elements/Pro 5.0, Parametric(Up to 3.0), Pro/Engineer 16 to Pro/Engineer Wildfire 5	.asm, .prt, .neu, .xas, .xpr
IGES	IGES	IGES 5.1, 5.2, 5.3	.igs, .iges
Parasolid	Parasolid® Text / Binary	Up to v27.0	.x_t, .x_b, .xmt, .xmt_txt
PRC	HOOPS		.prc
Rhino	OpenNURBS (Rhino)	version 4 and 5	.3dm
UG / NX	Siemens PLM Software's NX™	Unigraphics V11.0 to NX 9.0	.prt
Solid Edge	Solid Edge®	Solid Edge V19 - 20, ST - ST7	.asm, .par, .pwd, .psm
SolidWorks	SOLIDWORKS®	Up to 2015	.sldasm, .sldprt
STEP	STEP	AP 203 E1/E2, AP 214, AP 242	.stp, .step, .stp.z
VDA-FS	VDA-FS	Version 1.0 and 2.0	.vda

##### Export

Format	Application	Extensions
ACIS	ACIS® Text / Binary Part	.sat, .sab
IGES	IGES	.igs
JT	JT	.jt
Parasolid	Parasolid® Text / Binary	.x_t, .x_b
PRC	HOOPS	.prc
STEP	STEP	.stp

## Support for KeyShot BIP file export

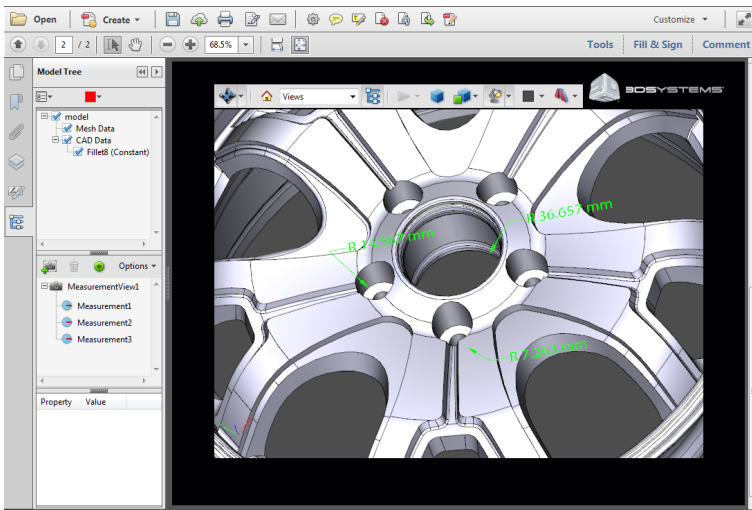
3D models created in the application can now be exported to a KeyShot .BIP file format. KeyShot for 3D Systems is a software renderer that allows you to turn your 3D models into amazing photorealistic images. With the support for KeyShot BIP file export, you will have interoperability between the Geomagic Design X and KeyShot for 3D Systems.



For more information, go to the [KeyShot for 3D Systems Getting Started](#) page of the Support website.

## Interactive 3D models in a 3D PDF

A new command named “3D PDF” has been added under *File > Publish* menu. This command allows you to create an interactive 3D PDF document with your 3D models and share your data and ideas with others. In the 3D PDF document, you can rotate, zoom, and pan your 3D models as in the application and add comments and review your design.



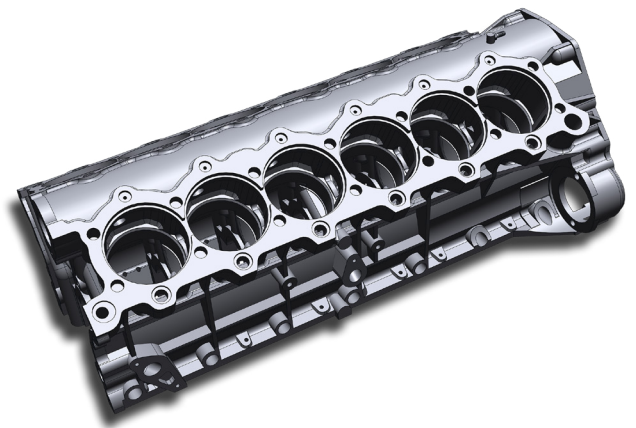
## Enhanced scanning performance

Internal algorithms for real-time scan points detection and data processing has been enhanced so that scanned points can be drawn without time delay even if a high-end 3D scanner such as FARO Edge ScanArm HD is being used.

## 4 BUG FIXES

Below is a list of bugs fixed in the application.

- Some of features listed in the supported feature table could not be transferred to Pro/Engineer Wildfire 3.0. This bug has been fixed.
- 3D models exported in Parasolid Binary file format (.x\_b) could not be imported in Pro/Engineer Wildfire 3.0. This bug has been fixed.
- There was an issue that 3D models created in the application could not be transferred to SolidWorks if there were lines with 0 length. This bug has been fixed.
- When creating a loft surface with the “Merge Tangent Faces” option, there was an issue that the merge operation would sometimes fail. This bug has been fixed.
- After applying the Trim command with the “Power Trim” option to sketches that cross each other, trimmed sketches would be created in an unexpected position. This bug has been fixed.
- The application would crash when users tried to rotate point clouds in the Point Cloud mode, while the “Dynamic Draw” option was turned on. This bug has been fixed.
- The yellow dotted preview circle, which is temporarily displayed when users try to change the tolerance value to join sketches, was displayed in an incorrect position. This bug has been fixed.
- When creating a loft surface, users could not create a composite selection from multiple edges or curves. This bug has been fixed.



3D Systems, Inc.  
333 Three D Systems Circle | Rock Hill, SC | 29730  
[www.3dsystems.com](http://www.3dsystems.com)

©2014 3D Systems, Inc. All rights reserved.