

 **3D Sprint™**

Installation Guide

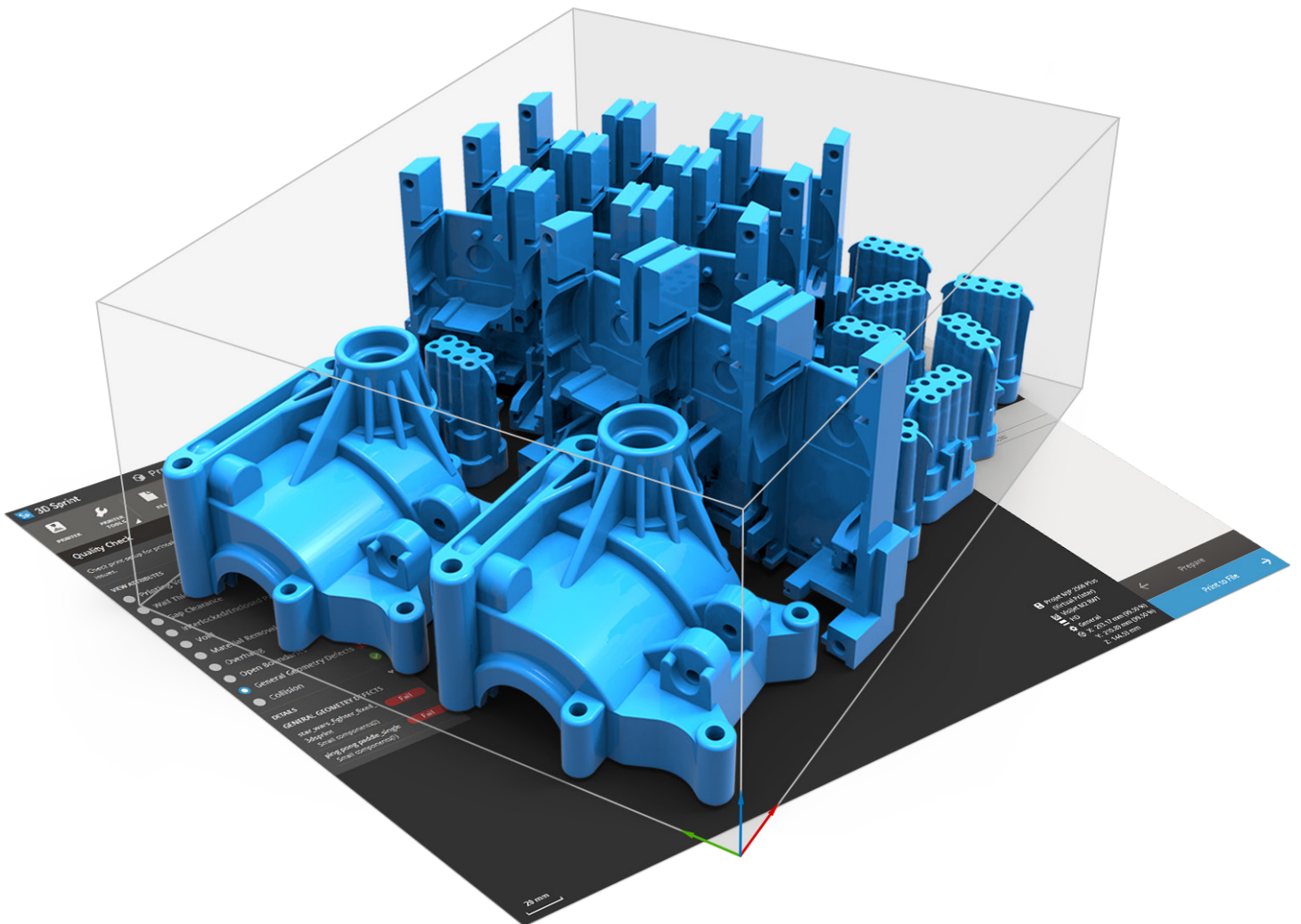


TABLE OF CONTENTS

- 1 INTRODUCTION..... 3
- 2 CHECK SYSTEM REQUIREMENTS..... 3
- 3 CHECK AND UPDATE GRAPHICS..... 4
- 4 INSTALLATION..... 7
- 5 UNINSTALLATION..... 9

1 INTRODUCTION

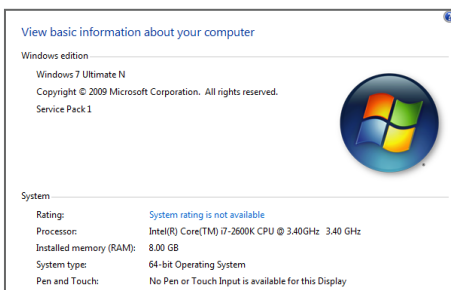
This guide will help you to install and run **3D Sprint™**. It will also help you to ensure that your system meets the requirements to run **3D Sprint™** and that the graphics driver is up to date. Please contact your local reseller for other questions concerning your PC and installation of **3D Sprint**. For information on how to use **3D Sprint**, please see the Help documentation by pressing **F1** in the application.

2 CHECK SYSTEM REQUIREMENTS

Follow these steps to ensure that your system meets the system requirements. For full system requirements, please open the [Systems Requirements](#) page in the Help command.

1. Open System information

For Windows 7 or 8: First open the [Control Panel](#) from the Start menu. Click [System and Security](#), and then click [System](#).



For Windows 10: Open the [Settings](#) from the Start menu. Click [System](#), and then click [About](#).



Check that the system meets the following requirements:

- Windows 7 or later.
- At least 2.0GHz Intel or AMD processor.
- Has at least 4 GB of ram.
- 64-bit operating system.

If your system does not meet these requirements, **3D Sprint** may not run on your PC. Contact your local reseller for more information.

2. Open the File Explorer

On the taskbar, open the File Explorer. In the left pane, click [Computer](#). Check that the hard drive has at least 30 GB of free space.

Except for installation, **3D Sprint** requires additional space on the hard drive when running. This is for caching temporary 3D data. If your hard drive does not have enough available space, **3D Sprint** may not run properly.

3 CHECK AND UPDATE GRAPHICS

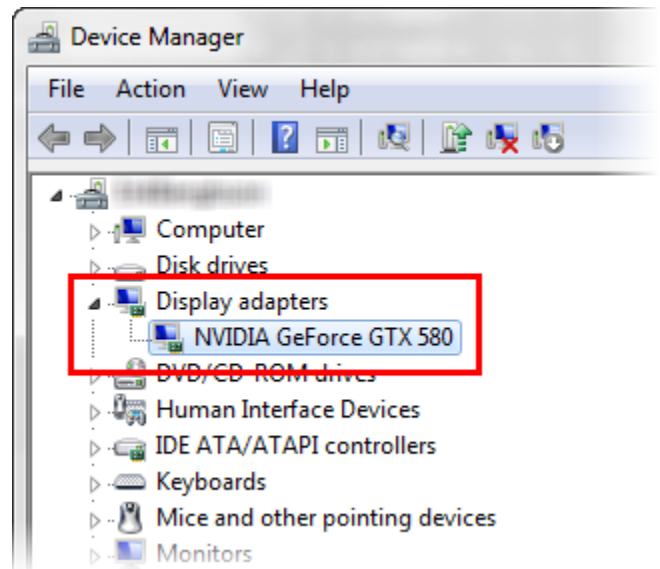
Follow these steps to check that your system meets the graphic card requirements. Update your graphics drivers to the latest version to ensure full support.

3. Check graphics card model

To check which graphics card is installed, first search for **Device Manager** in the Start menu or Search box. Double-click on **Display adapters**. Check that the computer has either an Intel, AMD or NVIDIA graphics card.

Minimum recommended graphics cards:

- Intel HD (HD 4000 or newer) or Iris.
- Nvidia GeForce GTX 285, Quadro 1000 or newer.
- AMD Radeon HD 6450 or newer.



4. Update graphics drivers from the computer manufacturer's website

Many computers require graphics drivers directly from the computer manufacturer.

- First, go to your computer manufacturers support website. [Click here to find the support website.](#)
- Find your computer model.
- Check for video or graphics drivers. If no driver is found or you cannot find the computer model, please go to step **3.3**.
- Download and install the drivers. If your computer has dual graphics cards, make sure you install the latest drivers for both.

If your computer has dual graphic cards, go to step **3.4**. Otherwise, go to step **3.7**.

5. Update graphics drivers from the graphics card manufacturer's website

If your computer manufacturer does not have special drivers, go directly to the graphic card manufacturers website to download the drivers.

- Go to the graphic card manufacturer's website. [Click here to find the support website.](#)
- Find your graphics card model.
- Check for video or graphics drivers.
- Download and install the drivers. If your computer has dual graphics cards, make sure you install the latest drivers for both.

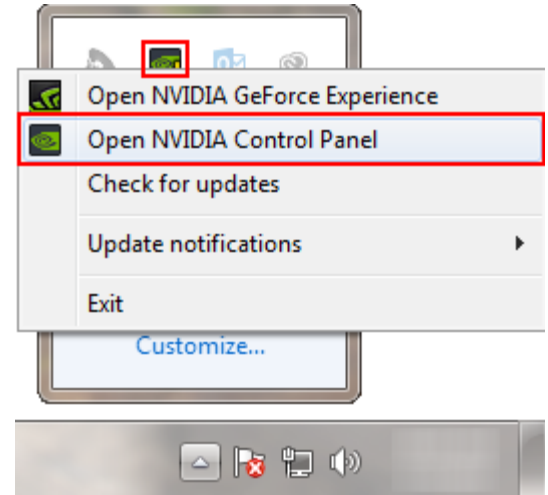
If your computer has dual graphic cards, go to step **3.4**. Otherwise, go to step **3.7**.

6. For computers with dual graphic cards

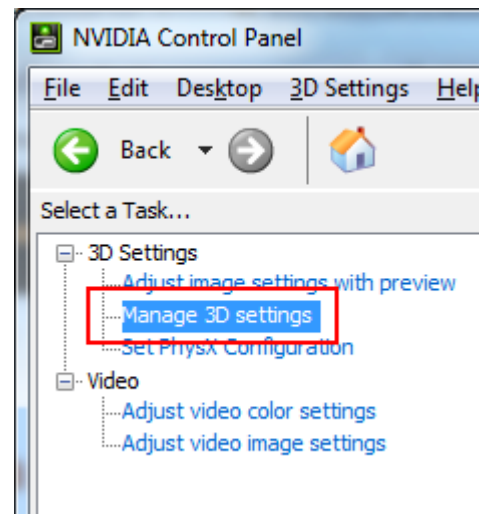
If you have a computer with dual graphics cards, please check the driver options to run **3D Sprint** with the correct card. If you have a **NVIDIA** graphics card, go to step 3.5. If you have an **AMD** graphics card, go to step 3.6.

7. For NVIDIA graphic cards:

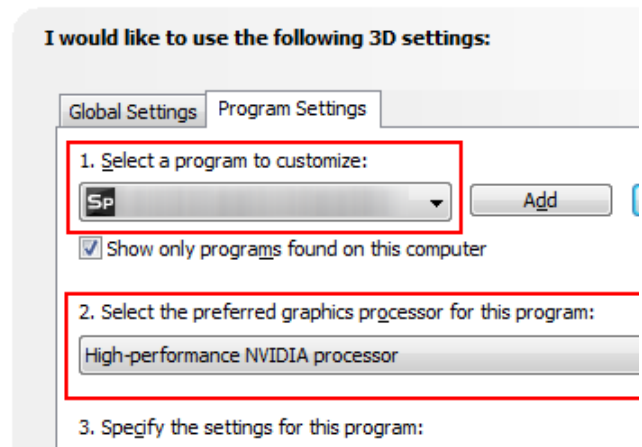
- a. First, update your driver from your computer manufacturer as instructed.
- b. In the notification area, open the **NVIDIA Control Panel**, it should be included in the driver package.



- c. Click **Manage 3D Settings** in the side menu.



- e. Change the setting under **3D Sprint** to use the NVIDIA processor.



- f. Click **Apply**.

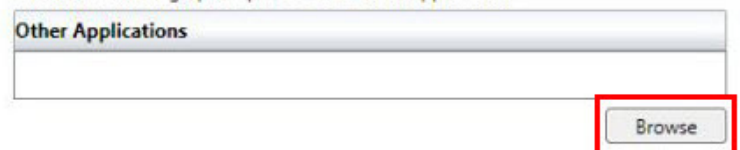
8. For AMD graphic cards:

- a. First, update your driver from your computer manufacturer as instructed.
- b. In the notification area, open the Catalyst Control Center, it should be included in the driver package.
- c. Under Power, click **Switchable Graphics**.

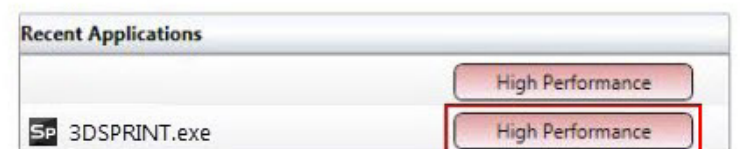


- d. Click **Browse** and navigate to the **3D Sprint** installation folder.

To configure other applications, first browse for them on your computer, then select the desired graphics processor for each application.



- e. Select High Performance next to **3D Sprint** in the Recent Applications section.



9. Install and run 3D Sprint

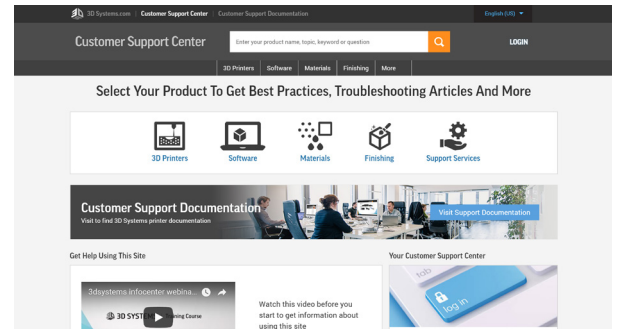
If system requirements are met and the graphics drivers are updated, you are ready to install and run **3D Sprint**.

4 INSTALLATION

Follow these steps to install and run **3D Sprint**.

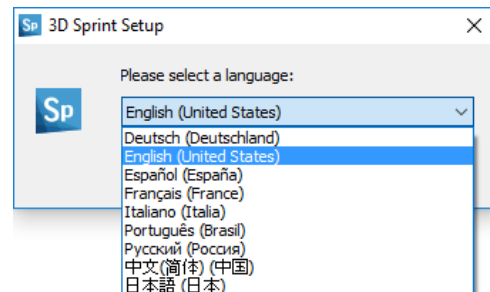
10. Download installer

- Go to support.3dsystems.com
- Log in with your credentials. If you do not have an account, create one by clicking **Login** and then **Not a member? Register here**. Fill in the entire form including printer serial number and then click **Sign up**. Then activate your account by clicking the link in the activation email sent to the registered email address.
- After you are logged in, click **3D Printers**. Then find your printer model.
- In the product page, under Software Downloads, find **3D Sprint** installer and documents.
- Download the installer and Release Notes.

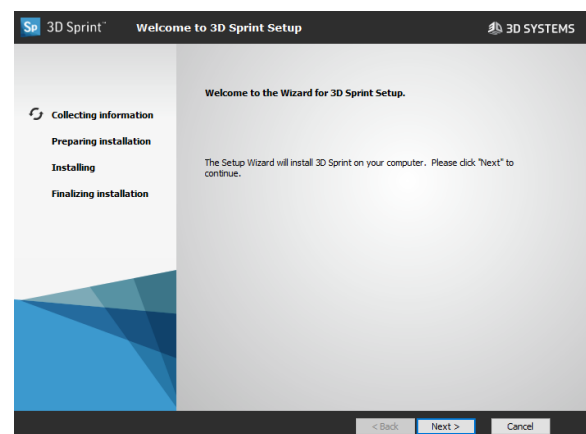


11. Open and run the installer.

- Go to the download folder and double click the **3D Sprint** installer.
- Choose your installation language and click **OK**

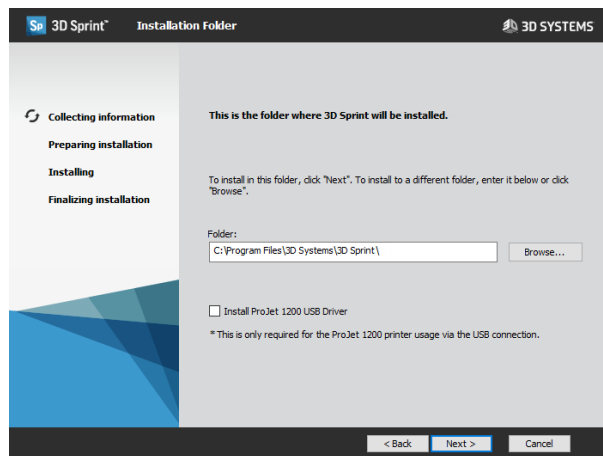


- When the installer opens, click **Next**.

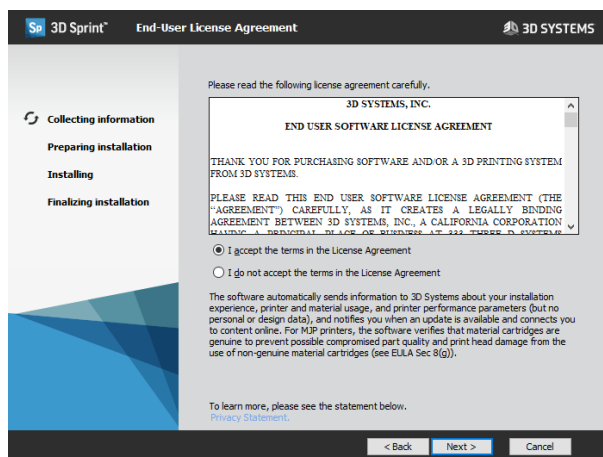


- d. Choose the destination folder and then click **Next**.
- e. Check the Install ProJet 1200 USB Driver if you need to connect to a ProJet 1200 printer via the USB connection.

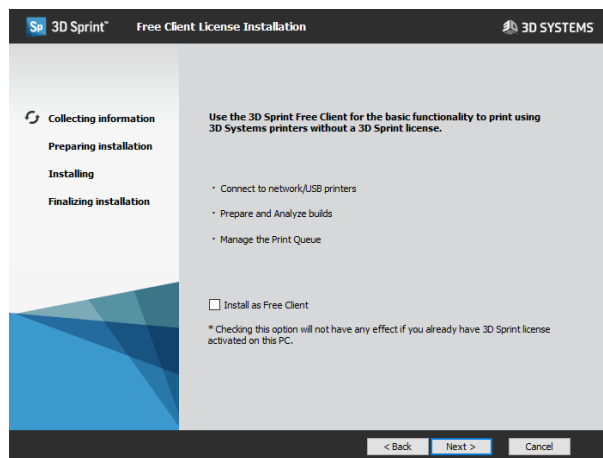
Please note: Previously installed versions of 3D Sprint will be overwritten.



- f. If you accept the license agreement, select "I accept...".
- g. Click **Next**.

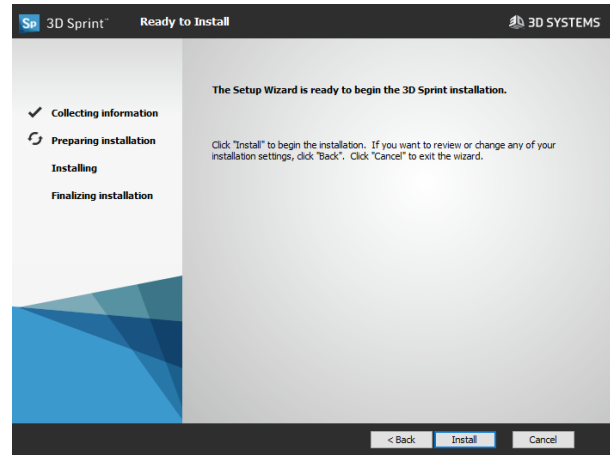


- h. Checking the Install as Free Client will not activate a trial license on install. If there is already an active license this option has no effect.

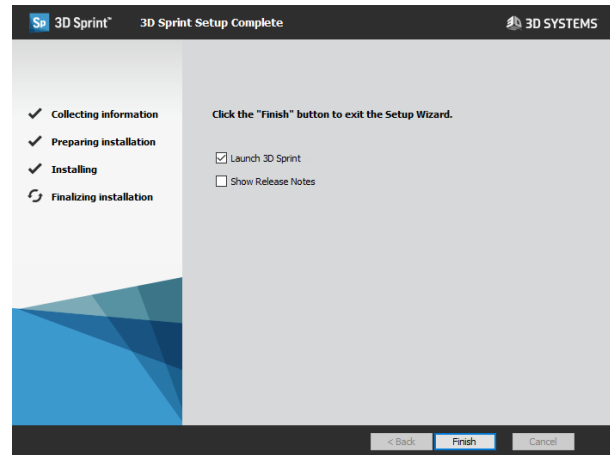


- i. To start the installation, click **Install**.
- j. The installation will start.
- k. When the installation has finished, a profiler will run to determine if your computer is able to run **3D Sprint**.
A message will appear letting you know if the test is not passed.
- l. If the test has failed, please update your graphics driver as instructed earlier in the document.

Note: 3D Sprint will not run properly if the graphics card does not meet the minimum requirement (OpenGL 2.1 and GLSL 1.20).



- m. Click **Finish** to close the installer.
- n. If the Launch 3D Sprint option is checked, the application will be launched upon exit.



Now you can open **3D Sprint** from the Start menu or desktop.

5 UNINSTALLATION

To remove **3D Sprint**, follow these steps:

12. Uninstalling 3D Sprint

- a. Open the **Control Panel**, and then click **Uninstall a program**. In Windows 10, open the start menu and enter “apps & features” in the search bar.
- b. In the list of applications, double-click on **3D Sprint**.
- c. **3D Sprint** will be removed from the computer.



3D Systems, Inc. 333 Three D Systems Circle Rock Hill, SC 29730
www.3dsystems.com

Copyright © 3D Systems, Inc. All rights reserved.