

# 3D SYSTEMS Touch X™

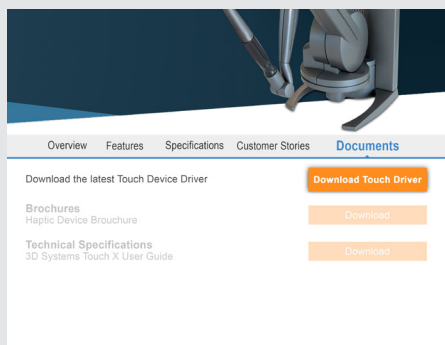


Please refer to the 3D Systems Touch Device User Guide for installation, safety, and proper operating and handling instructions. The User Guide can be found here: [www.3dsystems.com/haptics-devices/touch-x/documents](http://www.3dsystems.com/haptics-devices/touch-x/documents)



Phone: 1-978-494-8241

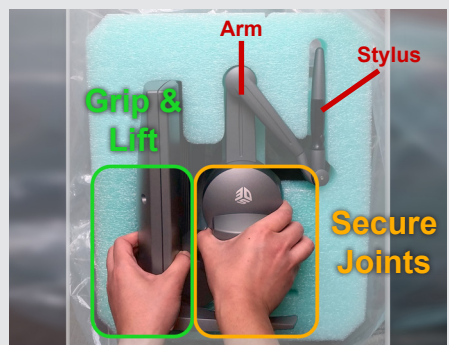
E-mail: [Software.Support.Americas@3DSystems.com](mailto:Software.Support.Americas@3DSystems.com)



1

## Download and Install drivers

Download the Touch Device Driver from [www.3dsystems.com/haptics-devices/touch-x/documents](http://www.3dsystems.com/haptics-devices/touch-x/documents). Follow the Install Wizard instructions to install the Touch Device Drivers. Reboot your computer after installing drivers to avoid any performance issues.

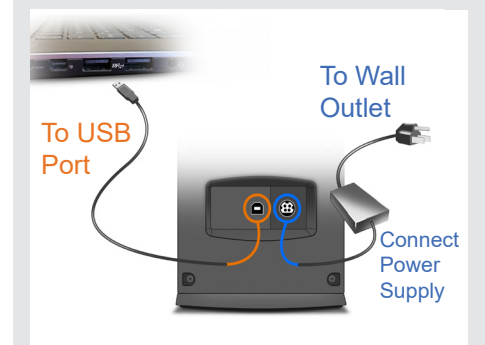


2

## Remove device from packaging

Grab the polybag and remove the device from the packaging. Lift the device out of the foam by grasping the back and securing the rotating head as shown above.

**DO NOT** lift the device by grasping the stylus or arm (this can damage the device).

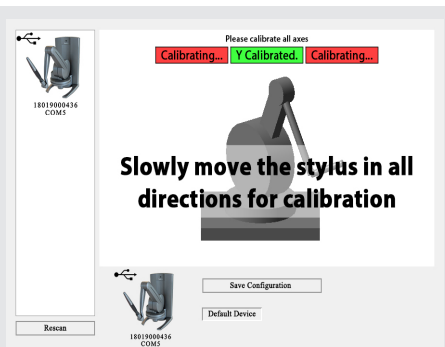


3

## Connect and power up device

Connect the power cord to the power supply and to an available outlet. Then plug in the power supply to the device. The LED at the top should quickly blink twice.

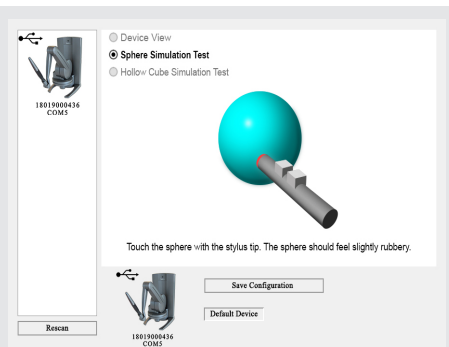
Connect the provided USB cable to both the device and the host computer.



4

## Run Touch Smart Setup

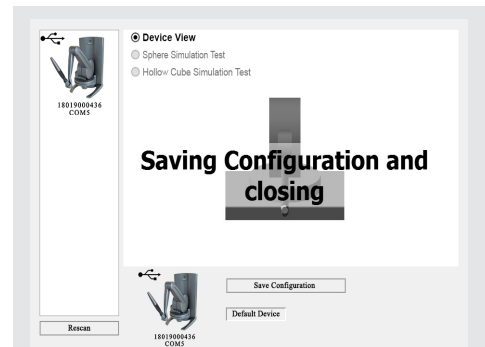
After connecting the device, run the **Touch Smart Setup** application. To calibrate the device, slowly move the arm to the right and left, up and down, in and out. Indicator boxes will turn **green** when each axis is calibrated.



5

## Perform verification tests

Perform the steps presented in the Sphere Simulation and Hollow Cube Simulation tests to verify proper device performance.



6

## Save configuration

When these tests have been completed, select **Save Configuration** to complete the Touch Smart Setup process.

**NOTE: Geomagic Freeform or Geomagic Sculpt cannot be open while running the Smart Setup.**

## System Requirements

<b>Operating System</b>	64-bit Windows 7, 8.1, and 10
<b>Processor</b>	Intel i5 / i7, 5th Generation or greater CPU Minimum 2.5 GHz frequency.
<b>RAM</b>	4 GB
<b>Graphics Card</b>	Minimum 256 MB VRAM (Install the latest drivers).
<b>Disk Space</b>	512 MB
<b>Display Resolution</b>	1280 x 800 (Minimum)
<b>Interface</b>	USB 2.0 / 3.0 port or USB Hub that supports USB 2.0/ 3.0. (Use only USB A to B cable provided by 3D Systems).

## Warranty

No warranties of any kind are created or extended by this publication. 3D Systems warrants that the Touch X haptic device will be free from defects in materials and workmanship, during the applicable warranty period, when used under the normal conditions described in the documentation provided to you, including the respective User Guide. 3D Systems will promptly repair or replace the Touch X, if required, to make it free of defects during the warranty period. This warranty excludes repairs required during the warranty period because of abnormal use or conditions (such as riots, floods, misuse, neglect or improper service by anyone except 3D Systems or its authorized service provider). The warranty period for the Touch X is twelve (12) months and shall start the date your device was purchased. For consumers who are covered by consumer protection laws or regulations in their country of purchase or, if different, their country of residence, the benefits conferred by our standard warranty are in addition to, and operate concurrently with, all rights and remedies conveyed by such consumer protection laws and regulations, including but not limited to these additional rights.

**THIS WARRANTY IS THE ONLY WARRANTY PROVIDED FOR THE TOUCH DEVICE. TO THE MAXIMUM EXTENT PERMITTED BY LAW, 3D SYSTEMS EXPRESSLY DISCLAIMS ALL OTHER WARRANTIES FOR THE TOUCH X DEVICE AND EACH OF ITS COMPONENTS, WHETHER THOSE WARRANTIES ARE EXPRESS, IMPLIED OR STATUTORY, INCLUDING WARRANTIES OF MERCHANTABILITY AND FITNESS FOR INTENDED OR PARTICULAR PURPOSES.**