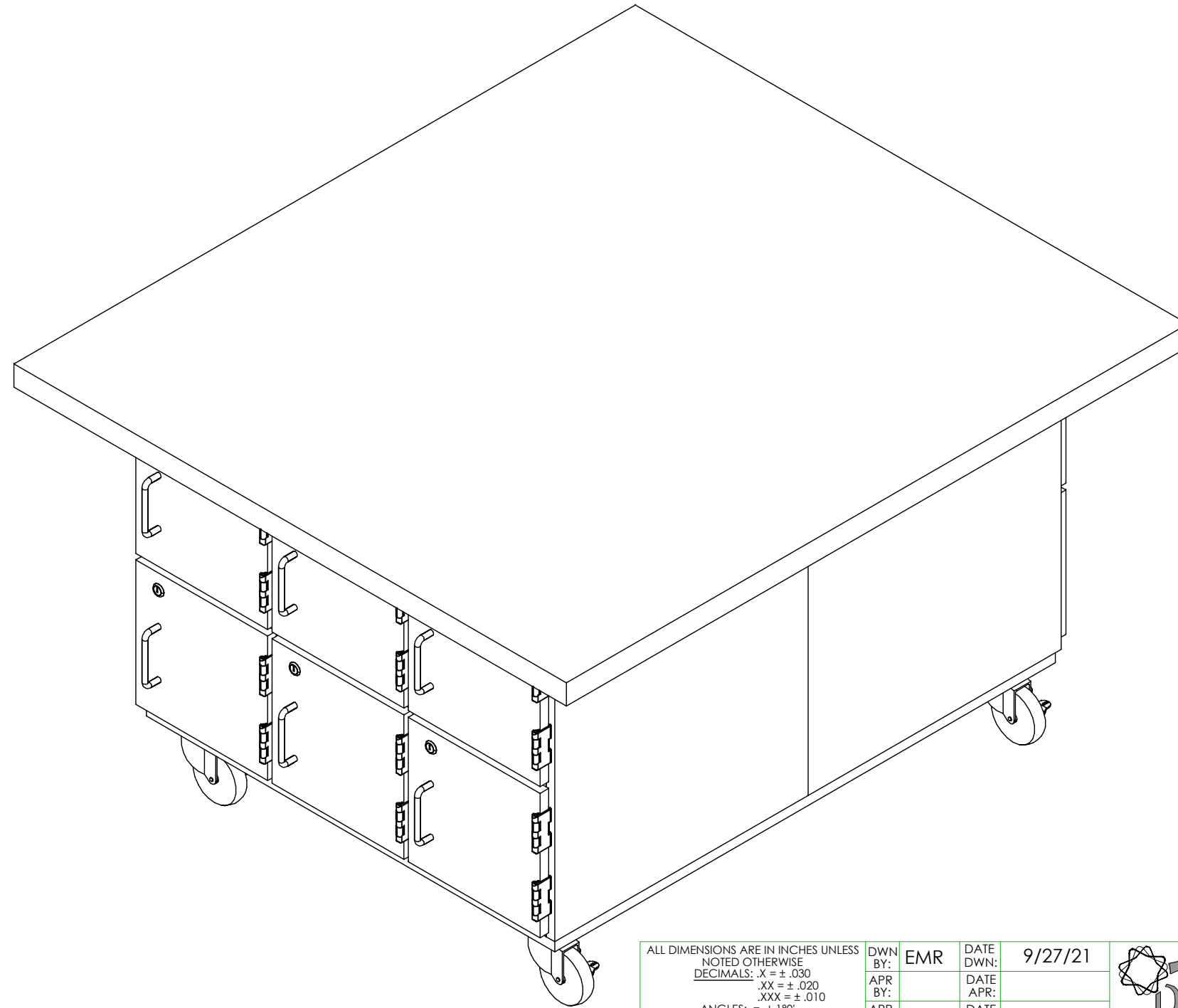


# WOOD WORKBENCH ON CASTERS

WW12C, WW31C, & WW32C SERIES (OAK OR MAPLE)  
ASSEMBLY INSTRUCTIONS



**NOTE:**

1. MODEL VIEWS MAY NOT REPRESENT EXACT MODEL PURCHASED

ALL DIMENSIONS ARE IN INCHES UNLESS NOTED OTHERWISE	DWN BY:	EMR	DATE DWN:	9/27/21
DECIMALS: .X = ± .030	APR BY:		DATE APR:	
.XX = ± .020	APR BY:		DATE APR:	
.XXX = ± .010	APR BY:		DATE APR:	
ANGLES: = ± 1°				
CABINET SQUARENESS = ± .0625				



300 South Krueger Street  
Suring, WI 54174  
diversifiedwoodcrafts.com

CONFIDENTIAL:  
ALL DESIGN RIGHTS RESERVED.  
THE INFORMATION, DATA, DESIGN, AND DRAWINGS EMBODIED IN THIS DOCUMENT AND ALL REPRODUCTIONS THEREOF ARE THE EXCLUSIVE PROPERTY OF DIVERSIFIED WOODCRAFTS, INC.

TITLE:  
WOOD WORKBENCH ON CASTERS  
ASSEMBLY INSTRUCTIONS

THESE DOCUMENTS ARE SUPPLIED WITH THE UNDERSTANDING THAT THEY WILL NOT BE DISCLOSED TO THIRD PARTIES WITHOUT WRITTEN CONSENT OF DIVERSIFIED WOODCRAFTS, INC. ANY REPRODUCTION IN PART OR WHOLE WITHOUT WRITTEN CONSENT IS SUBJECT TO LEGAL ACTION.

DRAWING NUMBER:	SCALE:	SHEET:	REVISION:
WW12C, WW31C, & WW32C SERIES	NTS	1 OF 9	REV B

REV.	DESCRIPTION	DATE	NAME	ECN No.
B	UPDATED CASTER STEP	3/6/2024	RJM	1447
A	CREATED ASSEMBLY INSTRUCTIONS	9/27/21	EMR	N/A
REVISION LEVEL				

# TOOLS REQUIRED

DRILL

3/8" WRENCH

# ASSEMBLY COMPONENTS

ITEMS INCLUDED	PART #	PART DESCRIPTION	QTY
TOP	VARIES	TOP,(STYLE & THICKNESS VARIES)X48X54	1
SCREWS - BUTCHER BLOCK TOP	100641	SCREW#8X1 <sup>3</sup> / <sub>4</sub> "QUAD RD WASH HD	12
SCREWS - HPL TOP	100597	SCREW#8X1-1/2"QUAD RD WASH HD	12
APPLIED BOTTOM	N/A	APPLIED BOTTOM - 0.75"THK x 43.50"W x 35.50"L	1
CASTERS	100081	CASTER,4IN SWIVEL TOP PLATE, W/BRAKE	4
CASTER HARDWARE KIT	206509	CASTER,ASSY,HDWRE,16-SCREWS, 16-NUTS	1
SCREWS - BOTTOM AND CABINETS	100597	SCREW,#8X1.5 QUAD ROUND WASHER	14
SHELF CLIPS	100027	SHELF CLIP,PLASTIC,5MM,PIN	8

**NOTE:**

- 1. COMPONENTS VARY WITH STYLE OF WORKBENCH PURCHASED.
  - 1.1. TOP SELECTIONS:
    - 1.1.1. 1/4" HPL OR 1<sup>3</sup>/<sub>4</sub>" MAPLE BUTCHER BLOCK.

REV.	DESCRIPTION	DATE	NAME	ECN No.
B	UPDATED CASTER STEP	3/6/2024	RJM	1447
A	CREATED ASSEMBLY INSTRUCTIONS	9/27/21	EMR	N/A
REVISION LEVEL				

ALL DIMENSIONS ARE IN INCHES UNLESS NOTED OTHERWISE DECIMALS: .X = ± .030 .XX = ± .020 .XXX = ± .010 ANGLES: = ± 1° CABINET SQUARENESS = ± .0625	DWN BY:	EMR	DATE DWN:	9/27/21
	APR BY:		DATE APR:	
	APR BY:		DATE APR:	
	APR BY:		DATE APR:	

CONFIDENTIAL:  
 ALL DESIGN RIGHTS RESERVED  
 THE INFORMATION, DATA, DESIGN, AND DRAWINGS EMBODIED IN THIS DOCUMENT AND ALL REPRODUCTIONS THEREOF ARE THE EXCLUSIVE PROPERTY OF DIVERSIFIED WOODCRAFTS, INC.

THESE DOCUMENTS ARE SUPPLIED WITH THE UNDERSTANDING THAT THEY WILL NOT BE DISCLOSED TO THIRD PARTIES WITHOUT WRITTEN CONSENT OF DIVERSIFIED WOODCRAFTS, INC. ANY REPRODUCTION IN PART OR WHOLE WITHOUT WRITTEN CONSENT IS SUBJECT TO LEGAL ACTION.



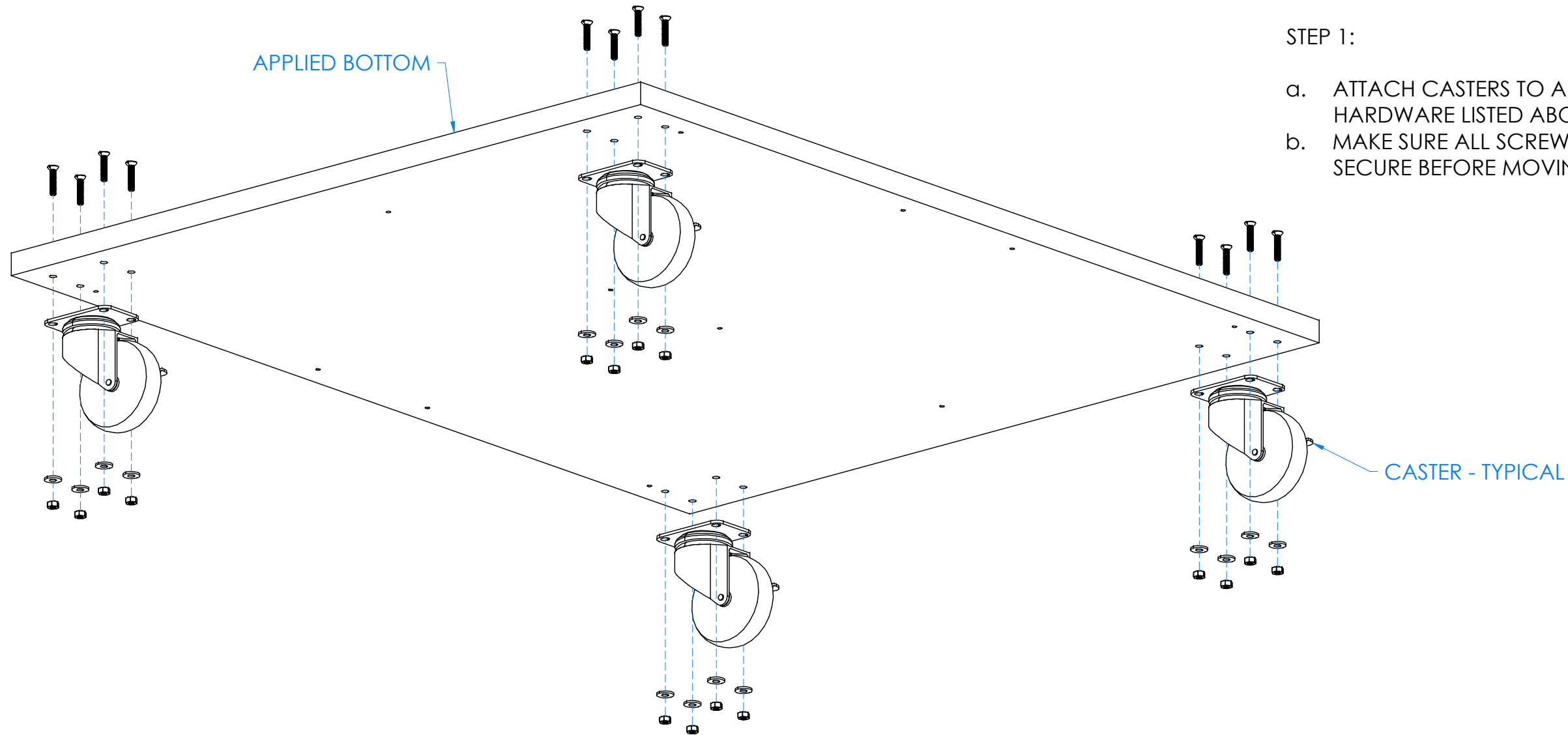
300 South Krueger Street  
 Suring, WI 54174  
[diversifiedwoodcrafts.com](http://diversifiedwoodcrafts.com)

TITLE:  
**WOOD WORKBENCH ON CASTERS  
 TOOLS AND ASSEMBLY COMPONENTS**

DRAWING NUMBER:	SCALE:	SHEET:	REVISION:
WW12C, WW31C, & WW32C SERIES	NTS	2 OF 9	REV B

## HARDWARE REQUIRED FOR STEP

QTY	DESCRIPTION	PART NUMBER
1	APPLIED BOTTOM	N/A
4	CASTERS	100081
1	CASTER HARDWARE KIT	206509



STEP 1:

- a. ATTACH CASTERS TO APPLIED BOTTOM USING PROVIDED HARDWARE LISTED ABOVE. **\*\*SEE NOTE\*\***
- b. MAKE SURE ALL SCREWS ARE ON TIGHT AND CASTERS ARE SECURE BEFORE MOVING ON.

**NOTE:**

- 1. **\*\*ATTACH CASTERS WITH FLAT HEAD BOLT THREADS FACING OUTSIDE OF THE CABINET LIKE SHOWN ABOVE AND ON STEP 2.\*\***

ALL DIMENSIONS ARE IN INCHES UNLESS NOTED OTHERWISE DECIMALS: .X = ± .030 .XX = ± .020 .XXX = ± .010 ANGLES: = ± 1° CABINET SQUARENESS = ± .0625	DWN BY:	EMR	DATE DWN:	9/27/21
	APR BY:		DATE APR:	
	APR BY:		DATE APR:	
	APR BY:		DATE APR:	



300 South Krueger Street  
Suring, WI 54174  
diversifiedwoodcrafts.com

CONFIDENTIAL:  
ALL DESIGN RIGHTS RESERVED.  
THE INFORMATION, DATA, DESIGN, AND DRAWINGS EMBODIED IN THIS DOCUMENT AND ALL REPRODUCTIONS THEREOF ARE THE EXCLUSIVE PROPERTY OF DIVERSIFIED WOODCRAFTS, INC.

TITLE:  
**WOOD WORKBENCH ON CASTERS  
ASSEMBLY INSTRUCTIONS**

THESE DOCUMENTS ARE SUPPLIED WITH THE UNDERSTANDING THAT THEY WILL NOT BE DISCLOSED TO THIRD PARTIES WITHOUT WRITTEN CONSENT OF DIVERSIFIED WOODCRAFTS, INC. ANY REPRODUCTION IN PART OR WHOLE WITHOUT WRITTEN CONSENT IS SUBJECT TO LEGAL ACTION.

DRAWING NUMBER:	SCALE:	SHEET:	REVISION:
WW12C, WW31C, & WW32C SERIES	NTS	3 OF 9	REV B

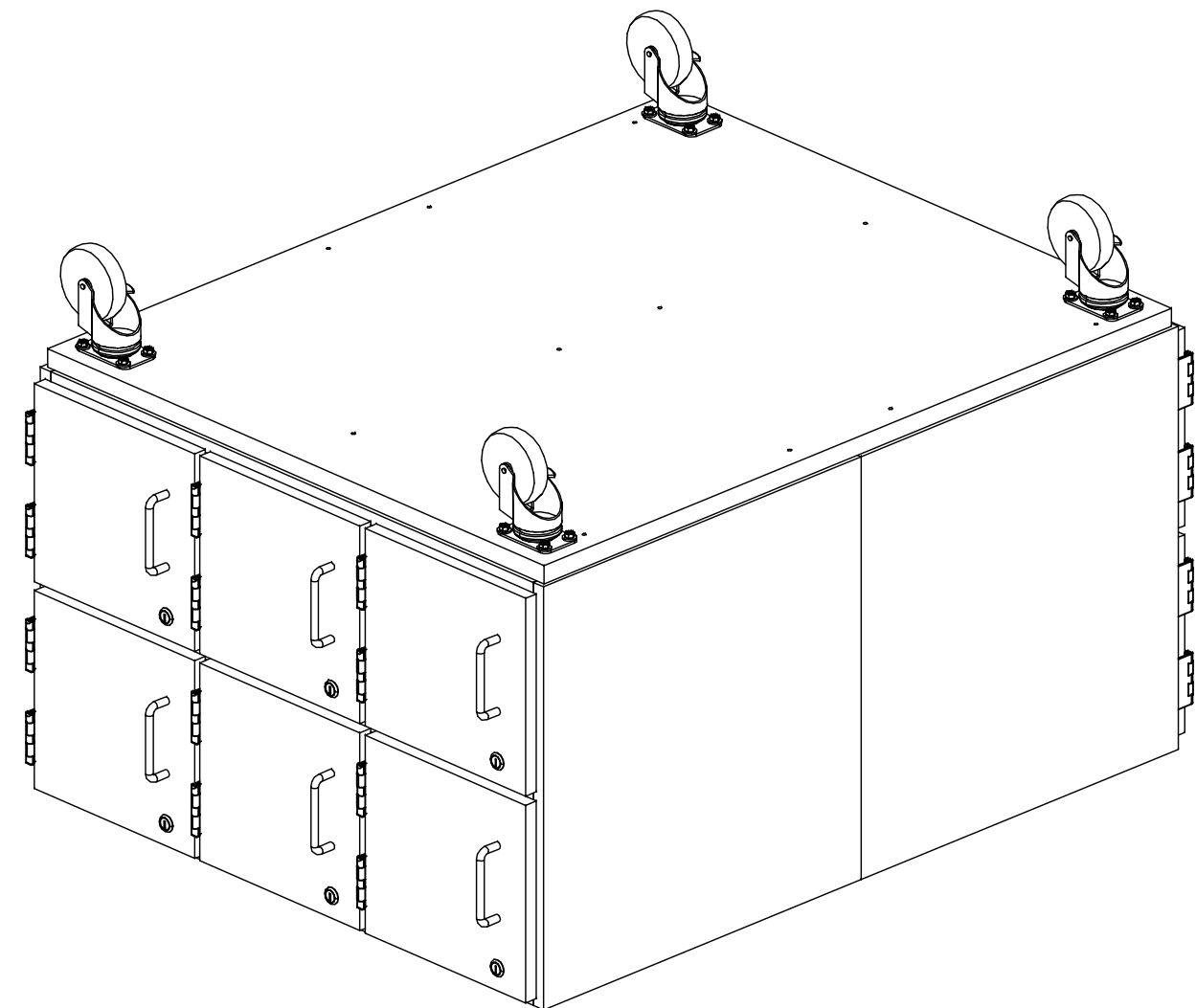
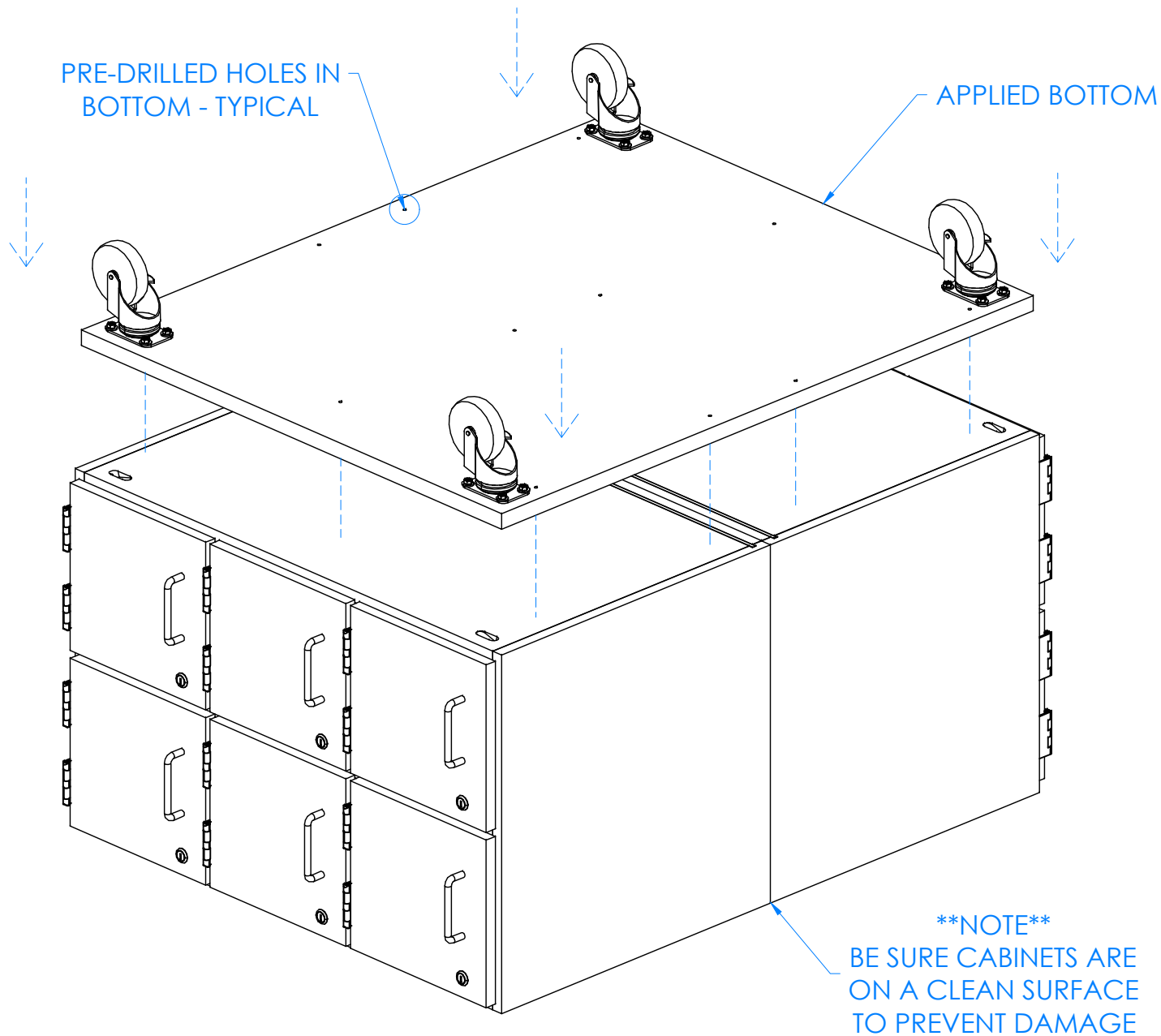
REV.	DESCRIPTION	DATE	NAME	ECN No.
B	UPDATED CASTER STEP	3/6/2024	RJM	1447
A	CREATED ASSEMBLY INSTRUCTIONS	9/27/21	EMR	N/A
REVISION LEVEL				

STEP 2:

- a. WITH HELP FROM ANOTHER PERSON, TURN THE TWO CABINETS OVER SO BOTTOM SIDE IS FACING UP.
- b. LOWER APPLIED BOTTOM DOWN ONTO BASE CABINETS WITH PROPER INSET - SHOULD BE A 1/4" INSET ON ALL EDGES.
- c. ATTACH BOTTOM TO CABINETS WITH HARDWARE PROVIDED THROUGH THE PRE-DRILLED HOLES LOCATED ON BOTTOM.
- d. MAKE SURE ALL SCREWS ARE ON TIGHT AND BOTTOM IS SECURE TO CABINETS.
- e. PLEASE MAKE SURE COMPONENTS ARE ALL ON A CLEAN, SOFT SURFACE TO PREVENT DAMAGE.

**HARDWARE REQUIRED FOR STEP**

QTY	DESCRIPTION	PART NUMBER
1	APPLIED BOTTOM W/CASTERS	N/A
12	SCREWS - BOTTOM AND CABINETS	100597



NOTE:

1.

ALL DIMENSIONS ARE IN INCHES UNLESS NOTED OTHERWISE DECIMALS: .X = ± .030 .XX = ± .020 .XXX = ± .010 ANGLES: = ± 1° CABINET SQUARENESS = ± .0625	DWN BY: EMR APR BY: APR BY:	DATE DWN: 9/27/21 DATE APR: DATE APR:
---	-----------------------------------	---


 300 South Krueger Street  
 Suring, WI 54174  
[diversifiedwoodcrafts.com](http://diversifiedwoodcrafts.com)

CONFIDENTIAL:  
 ALL DESIGN RIGHTS RESERVED.  
 THE INFORMATION, DATA, DESIGN, AND DRAWINGS EMBODIED IN THIS DOCUMENT AND ALL REPRODUCTIONS THEREOF ARE THE EXCLUSIVE PROPERTY OF DIVERSIFIED WOODCRAFTS, INC.

TITLE:  
**WOOD WORKBENCH ON CASTERS  
 ASSEMBLY INSTRUCTIONS**

THESE DOCUMENTS ARE SUPPLIED WITH THE UNDERSTANDING THAT THEY WILL NOT BE DISCLOSED TO THIRD PARTIES WITHOUT WRITTEN CONSENT OF DIVERSIFIED WOODCRAFTS, INC. ANY REPRODUCTION IN PART OR WHOLE WITHOUT WRITTEN CONSENT IS SUBJECT TO LEGAL ACTION.

DRAWING NUMBER: <b>WW12C, WW31C, &amp; WW32C SERIES</b>	SCALE: NTS	SHEET: 4 OF 9	REVISION: REV B
--	---------------	------------------	--------------------

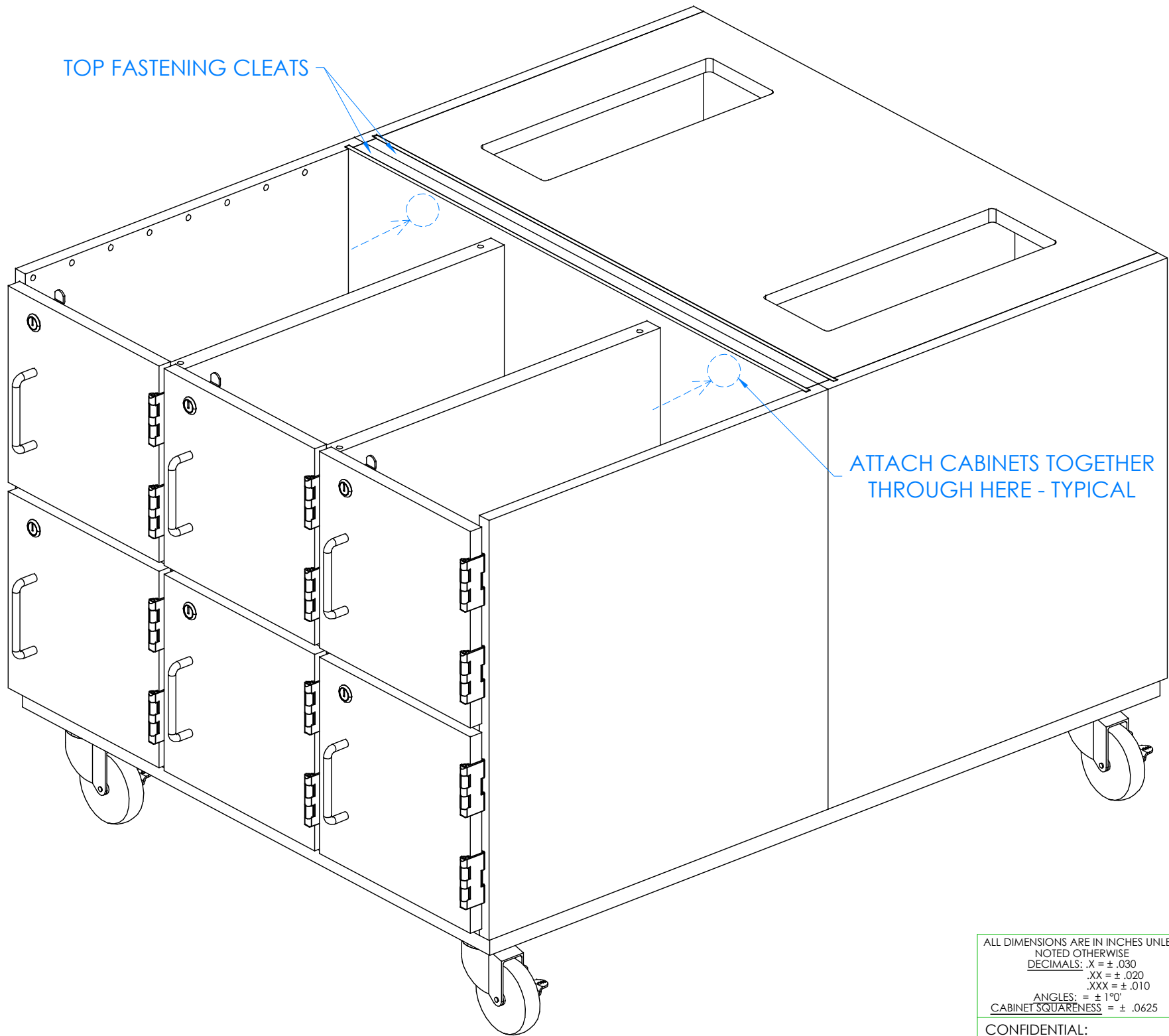
REV.	DESCRIPTION	DATE	NAME	ECN No.
B	UPDATED CASTER STEP	3/6/2024	RJM	1447
A	CREATED ASSEMBLY INSTRUCTIONS	9/27/21	EMR	N/A
REVISION LEVEL				

## HARDWARE REQUIRED FOR STEP

QTY	DESCRIPTION	PART NUMBER
2	SCREWS - BOTTOM AND CABINETS	100597

STEP 3:

- a. WITH HELP FROM MULTIPLE PEOPLE, TURN WORKBENCH OVER ONTO CASTERS.
- b. SECURE CABINETS TOGETHER WITH THE REMAINING (2) SCREWS.
- c. ATTACH CABINETS TOGETHER BY SCREWING THROUGH TOP FASTENING CLEAT OF ONE CABINET INTO THE OTHER CABINET.
- d. PRE-DRILL HOLES IN BACK AND FASTENING CLEAT TO PREVENT CRACKING.
- e. MAKE SURE SCREWS ARE ON TIGHT.



TOP FASTENING CLEATS

ATTACH CABINETS TOGETHER THROUGH HERE - TYPICAL

CABINET TOP REMOVED TO SHOW CLARITY

NOTE:

1.

ALL DIMENSIONS ARE IN INCHES UNLESS NOTED OTHERWISE DECIMALS: .X = ± .030 .XX = ± .020 .XXX = ± .010 ANGLES: = ± 1° CABINET SQUARENESS = ± .0625	DWN BY: EMR APR BY: APR BY:	DATE DWN: 9/27/21 DATE APR: DATE APR:
---	-----------------------------------	---



300 South Krueger Street  
Suring, WI 54174  
diversifiedwoodcrafts.com

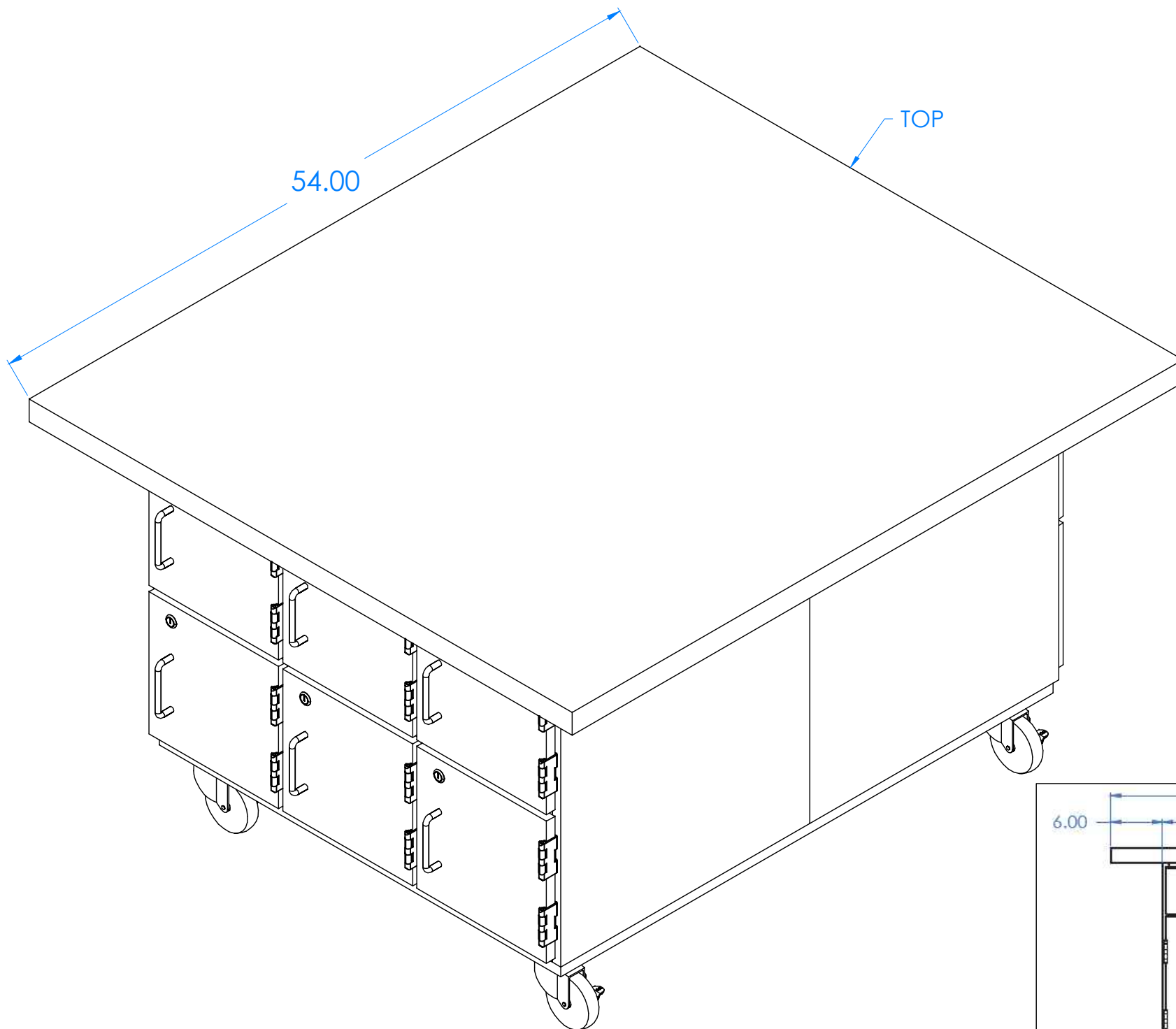
CONFIDENTIAL:  
ALL DESIGN RIGHTS RESERVED.  
THE INFORMATION, DATA, DESIGN, AND DRAWINGS EMBODIED IN THIS DOCUMENT AND ALL REPRODUCTIONS THEREOF ARE THE EXCLUSIVE PROPERTY OF DIVERSIFIED WOODCRAFTS, INC.

TITLE:  
WOOD WORKBENCH ON CASTERS  
ASSEMBLY INSTRUCTIONS

THESE DOCUMENTS ARE SUPPLIED WITH THE UNDERSTANDING THAT THEY WILL NOT BE DISCLOSED TO THIRD PARTIES WITHOUT WRITTEN CONSENT OF DIVERSIFIED WOODCRAFTS, INC. ANY REPRODUCTION IN PART OR WHOLE WITHOUT WRITTEN CONSENT IS SUBJECT TO LEGAL ACTION.

DRAWING NUMBER: WW12C, WW31C, & WW32C SERIES	SCALE: NTS	SHEET: 5 OF 9	REVISION: REV B
---	---------------	------------------	--------------------

REV.	DESCRIPTION	DATE	NAME	ECN No.
B	UPDATED CASTER STEP	3/6/2024	RJM	1447
A	CREATED ASSEMBLY INSTRUCTIONS	9/27/21	EMR	N/A
REVISION LEVEL				



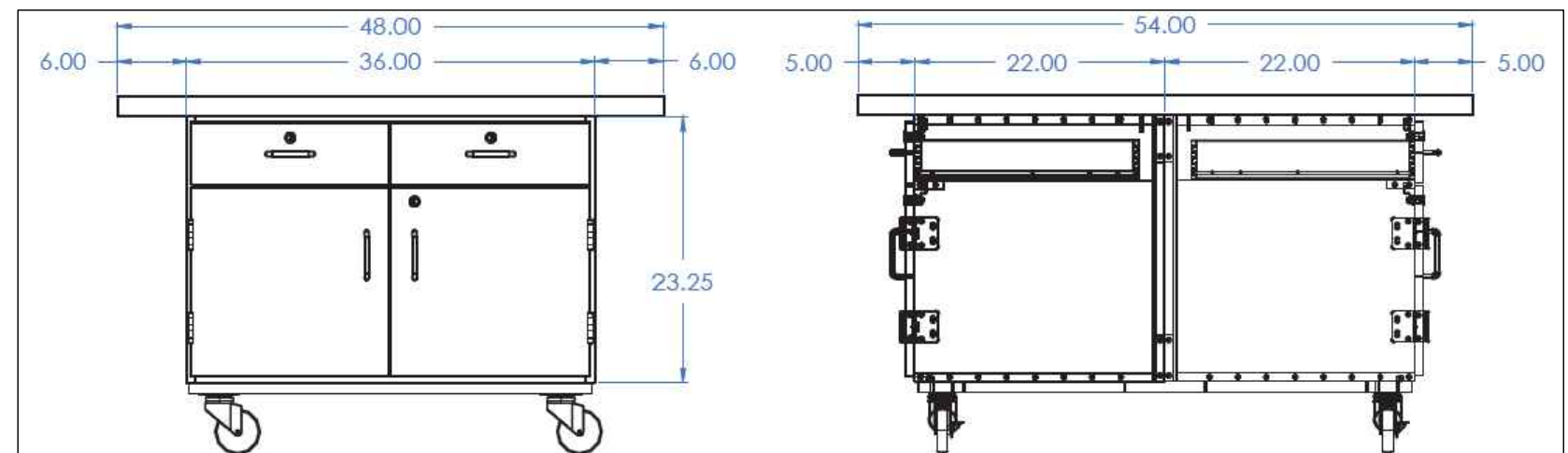
## HARDWARE REQUIRED FOR STEP

QTY	DESCRIPTION	PART NUMBER
1	TOP	VARIES
12	SCREWS - TOP	100641 OR 100597

### STEP 4:

- a. PLACE TOP ON WORKSTATION WITH PROPER OVERHANG (SEE IMAGE BELOW).
- b. ATTACH TOP TO CABINETS WITH HARDWARE PROVIDED FOR TOP TYPE PURCHASED.
- c. SCREW THROUGH INSIDE OF CABINETS TO THE TOP.
  - c.a. USE (6) SCREWS PER CABINET, EVENLY SPACED
- d. PRE-DRILL HOLES IN TOP TO PREVENT CRACKING.
- e. MAKE SURE SCREWS ARE TIGHT AND TOP IS SECURE.

## TOP PLACEMENT LAYOUT



### NOTE:

1.

ALL DIMENSIONS ARE IN INCHES UNLESS NOTED OTHERWISE  
 DECIMALS: .X = ± .030  
 .XX = ± .020  
 .XXX = ± .010  
 ANGLES: = ± 1°  
 CABINET SQUARENESS = ± .0625

DWN BY:	EMR	DATE DWN:	9/27/21
APR BY:		DATE APR:	
APR BY:		DATE APR:	



300 South Krueger Street  
 Suring, WI 54174  
 diversifiedwoodcrafts.com

CONFIDENTIAL:  
 ALL DESIGN RIGHTS RESERVED.  
 THE INFORMATION, DATA, DESIGN, AND DRAWINGS EMBODIED IN THIS DOCUMENT AND ALL REPRODUCTIONS THEREOF ARE THE EXCLUSIVE PROPERTY OF DIVERSIFIED WOODCRAFTS, INC.

THESE DOCUMENTS ARE SUPPLIED WITH THE UNDERSTANDING THAT THEY WILL NOT BE DISCLOSED TO THIRD PARTIES WITHOUT WRITTEN CONSENT OF DIVERSIFIED WOODCRAFTS, INC. ANY REPRODUCTION IN PART OR WHOLE WITHOUT WRITTEN CONSENT IS SUBJECT TO LEGAL ACTION.

TITLE:  
**WOOD WORKBENCH ON CASTERS  
 ASSEMBLY INSTRUCTIONS**

REV.	DESCRIPTION	DATE	NAME	ECN No.
B	UPDATED CASTER STEP	3/6/2024	RJM	1447
A	CREATED ASSEMBLY INSTRUCTIONS	9/27/21	EMR	N/A
REVISION LEVEL				

DRAWING NUMBER:	SCALE:	SHEET:	REVISION:
WW12C, WW31C, & WW32C SERIES	NTS	6 OF 9	REV B

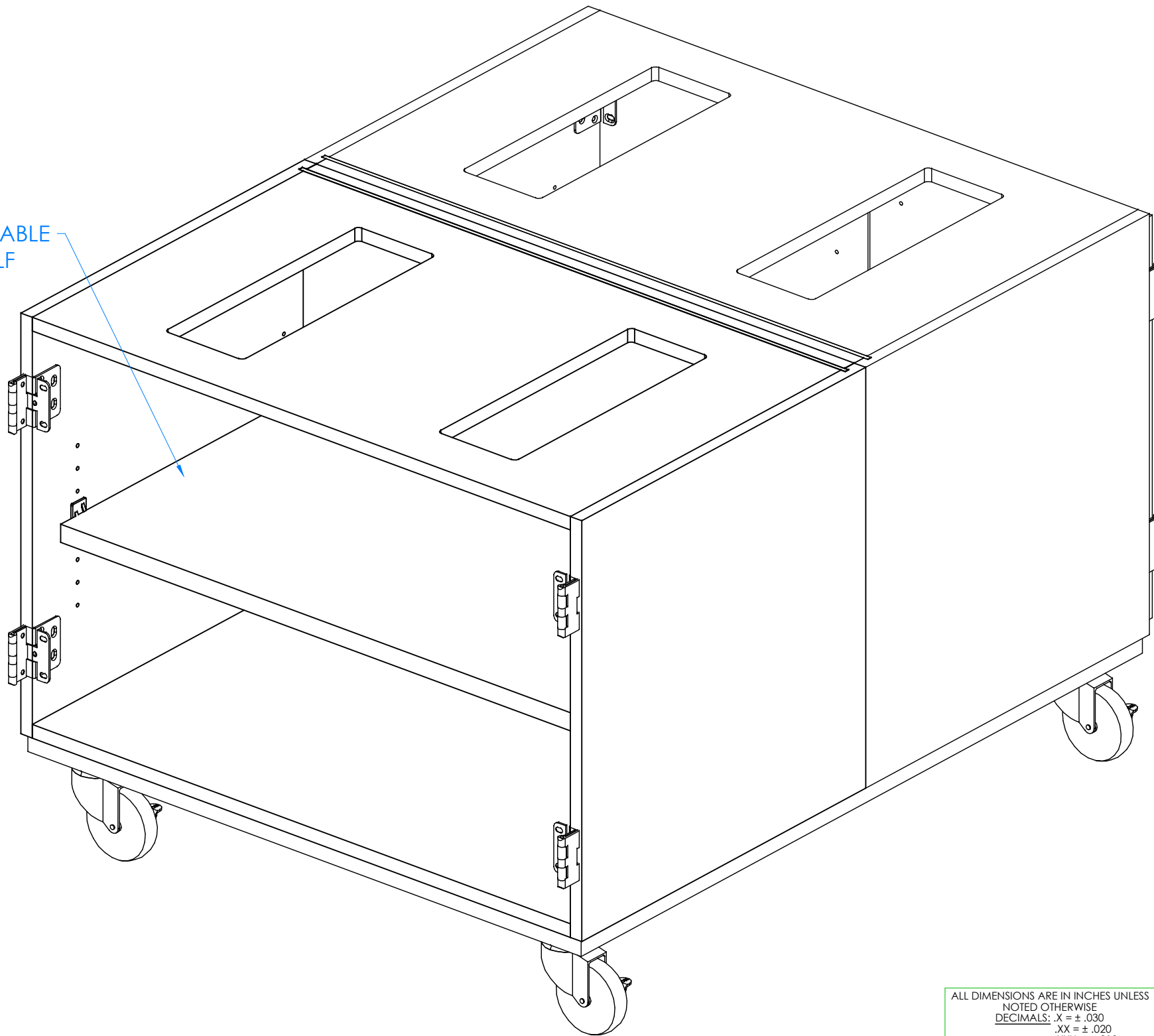
## HARDWARE REQUIRED FOR STEP

QTY	DESCRIPTION	PART NUMBER
8	SHELF CLIPS	100027

STEP 5:

- a. IF YOU HAVE ADJUSTABLE SHELVES IN YOUR UNIT (WW31C), INSERT SHELF CLIPS IN DESIRED LOCATION.
- b. PLACE SHELVES ON CLIPS, MAKING SURE THEY ARE LEVEL.

ADJUSTABLE SHELF



NOTE:

1.

TOP, DOORS, AND HARDWARE REMOVED TO SHOW CLARITY

REV.	DESCRIPTION	DATE	NAME	ECN No.
B	UPDATED CASTER STEP	3/6/2024	RJM	1447
A	CREATED ASSEMBLY INSTRUCTIONS	9/27/21	EMR	N/A
REVISION LEVEL				

ALL DIMENSIONS ARE IN INCHES UNLESS NOTED OTHERWISE DECIMALS: .X = ± .030 .XX = ± .020 .XXX = ± .010 ANGLES: = ± 1° CABINET SQUARENESS = ± .0625	DWN BY: EMR APR BY: APR BY:	DATE DWN: 9/27/21 DATE APR: DATE APR:
---	-----------------------------------	---

CONFIDENTIAL:  
ALL DESIGN RIGHTS RESERVED.  
THE INFORMATION, DATA, DESIGN, AND DRAWINGS EMBODIED IN THIS DOCUMENT AND ALL REPRODUCTIONS THEREOF ARE THE EXCLUSIVE PROPERTY OF DIVERSIFIED WOODCRAFTS, INC.

THESE DOCUMENTS ARE SUPPLIED WITH THE UNDERSTANDING THAT THEY WILL NOT BE DISCLOSED TO THIRD PARTIES WITHOUT WRITTEN CONSENT OF DIVERSIFIED WOODCRAFTS, INC. ANY REPRODUCTION IN PART OR WHOLE WITHOUT WRITTEN CONSENT IS SUBJECT TO LEGAL ACTION.



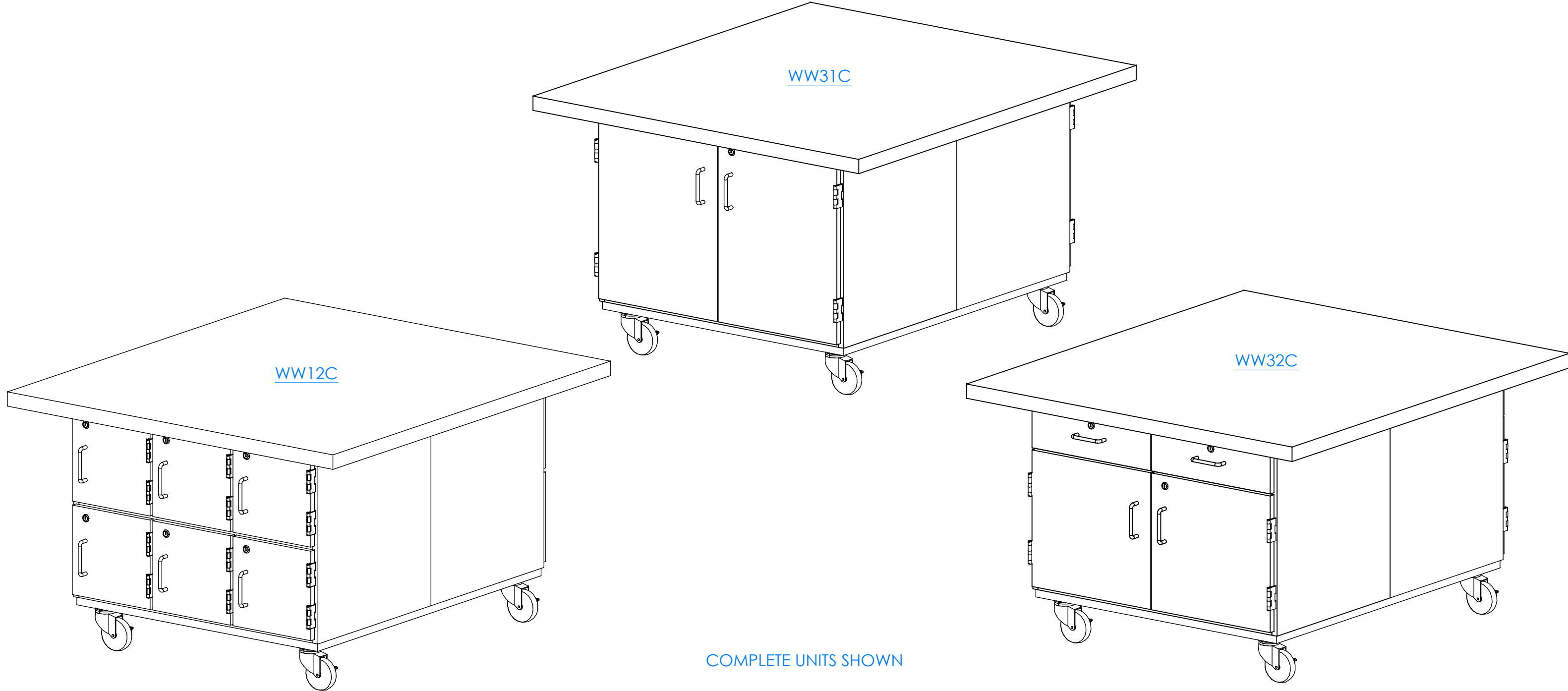
300 South Krueger Street  
Suring, WI 54174  
diversifiedwoodcrafts.com

TITLE:  
WOOD WORKBENCH ON CASTERS  
ASSEMBLY INSTRUCTIONS

DRAWING NUMBER: WW12C, WW31C, & WW32C SERIES	SCALE: NTS	SHEET: 7 OF 9	REVISION: REV B
---	---------------	------------------	--------------------

STEP 6:

- a. SET MOBILE WORKSTATION IN DESIRED LOCATION.



COMPLETE UNITS SHOWN

NOTE:

1.

ALL DIMENSIONS ARE IN INCHES UNLESS NOTED OTHERWISE DECIMALS: .X = ± .030 .XX = ± .020 .XXX = ± .010 ANGLES: = ± 1° CABINET SQUARENESS = ± .0625	DWN BY: EMR APR BY: APR BY:	DATE DWN: 9/27/21 DATE APR: DATE APR:
---	-----------------------------------	---



300 South Krueger Street  
Suring, WI 54174  
diversifiedwoodcrafts.com

CONFIDENTIAL:  
ALL DESIGN RIGHTS RESERVED.  
THE INFORMATION, DATA, DESIGN, AND DRAWINGS EMBODIED IN THIS DOCUMENT AND ALL REPRODUCTIONS THEREOF ARE THE EXCLUSIVE PROPERTY OF DIVERSIFIED WOODCRAFTS, INC.

TITLE:  
WOOD WORKBENCH ON CASTERS  
ASSEMBLY INSTRUCTIONS

THESE DOCUMENTS ARE SUPPLIED WITH THE UNDERSTANDING THAT THEY WILL NOT BE DISCLOSED TO THIRD PARTIES WITHOUT WRITTEN CONSENT OF DIVERSIFIED WOODCRAFTS, INC. ANY REPRODUCTION IN PART OR WHOLE WITHOUT WRITTEN CONSENT IS SUBJECT TO LEGAL ACTION.

DRAWING NUMBER: WW12C, WW31C, & WW32C SERIES	SCALE: NTS	SHEET: 8 OF 9	REVISION: REV B
---	---------------	------------------	--------------------

REV.	DESCRIPTION	DATE	NAME	ECN No.
B	UPDATED CASTER STEP	3/6/2024	RJM	1447
A	CREATED ASSEMBLY INSTRUCTIONS	9/27/21	EMR	N/A
REVISION LEVEL				

PRODUCT

# Butcher Block (Varnished Tops) *Maintenance & Repair*

## SPILLS

- Be sure any spills are cleaned up immediately. Excessive moisture and certain chemicals allowed to stand on a finished surface can cause damage.
- Clean spills or soiled areas with a damp cloth and dry thoroughly.
- Periodically, apply a coat of spray wax, paste wax, or lemon oil to finished surface. This will enhance and protect the finish and insure a moisture barrier is intact in the event the finish becomes scratched or worn.

## SCRATCHES & DENTS

- Minor scratches and dents can be easily repaired by rubbing the affected area with steel wool or fine grit (#220) sandpaper. Remember, when rubbing or sanding always sand with the grain of the wood. Feather edges of repair in to the surrounding area. Remove all dust and residue and apply a coat of clear lacquer type finish or paint. Clear lacquer type finish can be purchased at most paint or hardware stores. Small cans of touch-up paint are available from your dealer or representative. Paint colors can easily be matched at most paint stores. Confine touch-up only to the area that was sanded. Remember, follow manufacturing directions on product label when refinishing.
- Major scratches and gouges where large portions of wood have been removed or damaged should be handled by a professional experienced in furniture repair with the proper tools and equipment.

## MINERAL STREAKS

- Mineral Streaks—Natural Coloring of wood due to mineral deposits in the tree. Repair is not required and will add to the individuality of your table. Sizes can range up to a 1/4" wide and up to 3" in length.

## HUMIDITY GUIDELINES

Your Butcher Block was kiln-dried to an initial moisture content of 7.6%. In order to maintain the beauty and integrity of your Butcher Block, it is recommended that special care be taken to keep the relative humidity and temperature within your home or warehouse in the highlighted range. This will limit the amount of expansion and contraction in your natural wood product and minimize the risk of environmental damage.

- **Environment Acclimation:** Environmental damage does not constitute defective product. Allowing your Butcher Block to acclimate to the environment for at least 72 hours prior to installation, following recommended installation practices that allow your Butcher Block to move with the conditions and controlling the environment itself are all key factors that determine the life of your product.
- **Temperature Changes:** It is important to note that as winter temperatures drop, so does relative humidity in the air. The heaters come on which further dries the air. Keeping the area humidified to an acceptable level usually becomes necessary during the winter months. The opposite is true in spring and summer as humidity rises, dehumidifiers and air conditioners become the method of control.

		RELATIVE HUMIDITY %																	
		5	10	15	20	25	30	35	40	45	50	55	60	65	70	75	80	85	90
TEMPERATURE (°F)	30	1.4	2.6	3.7	4.6	5.5	6.3	7.1	7.8	8.7	9.5	10.4	11.3	12.4	13.5	14.9	17	18.5	21
	40	1.4	2.6	3.7	4.6	5.5	6.3	7.1	7.8	8.7	9.5	10.4	11.3	12.4	13.5	14.9	17	18.5	21
	50	1.4	2.6	3.6	4.6	5.5	6.3	7.1	7.9	8.7	9.5	10.3	11.2	12.3	13.4	14.8	16	18.4	20.9
	60	1.3	2.5	3.6	4.6	5.4	6.2	7	7.8	8.6	9.4	10.2	11.1	12.1	13.3	14.6	16	18.2	20.7
	70	1.3	2.5	3.5	4.5	5.4	6.2	6.9	7.7	8.5	9.2	10.1	11	12	13.1	14.4	16	17.9	20.5
	80	1.3	2.4	3.5	4.4	5.3	6.1	6.8	7.6	8.3	9.1	9.9	10.8	11.7	12.9	14.2	16	17.7	20.2
	90	1.2	2.3	3.4	4.3	5.1	5.9	6.7	7.4	8.1	8.9	9.7	10.5	11.85	12.6	13.9	15	17.3	19.8
100	1.2	2.3	3.3	4.2	5	5.8	6.5	7.2	7.9	8.7	9.5	10.3	11.2	12.3	13.6	15	17	19.5	

*Example: If conditions in a warehouse are 60% relative humidity at 50 degrees Fahrenheit Dry wood will pick up moisture until 11.2% is reached, regardless of wood species and initial moisture content.*