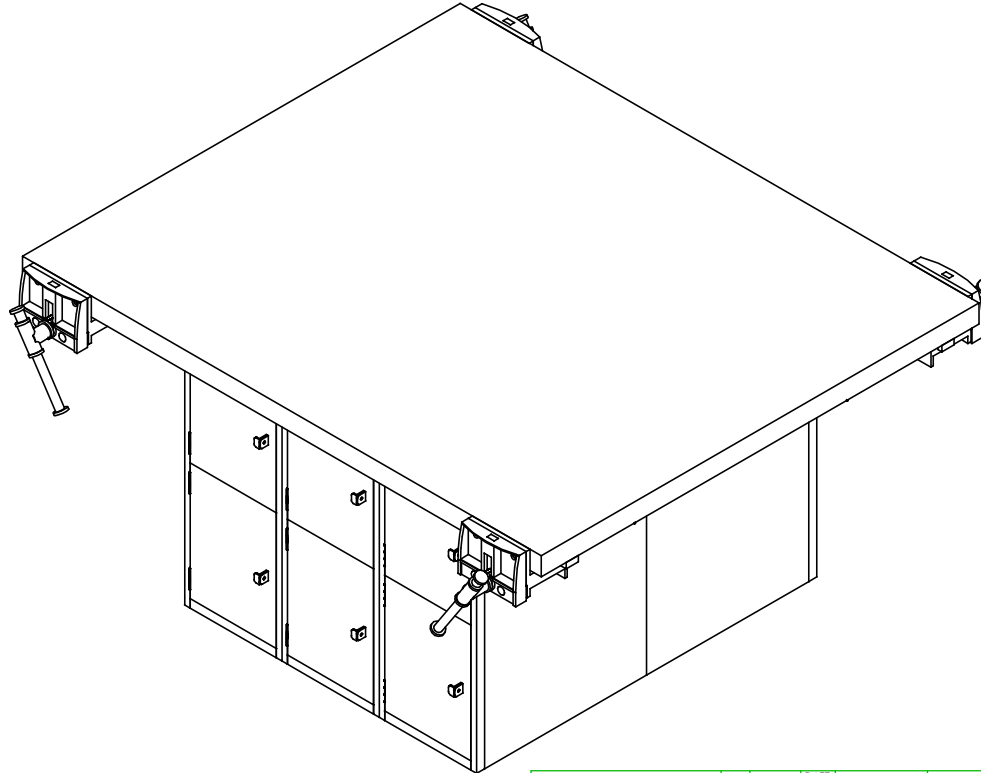


STEEL WORKBENCH

WB SERIES
ASSEMBLY INSTRUCTIONS



NOTE:

1. MODEL VIEWS MAY NOT REPRESENT EXACT MODEL PURCHASED

ALL DIMENSIONS ARE IN INCHES UNLESS NOTED OTHERWISE	DWN BY: EMK	DATE DWN: 11/28/16
CABINET SQUARENESS = ± .0625	APR BY:	DATE APR:
FRACTIONAL VALUES = ± 1/32"	APR BY:	DATE APR:
- ALL VALUES ± OVERALL -		

CONFIDENTIAL:
ALL DESIGN RIGHTS RESERVED
THE INFORMATION, DATA, DESIGN, AND DRAWINGS EMBODIED IN THIS DOCUMENT AND ALL REPRODUCTIONS THEREOF ARE THE EXCLUSIVE PROPERTY OF DIVERSIFIED WOODCRAFTS, INC.

THESE DOCUMENTS ARE SUPPLIED WITH THE UNDERSTANDING THAT THEY WILL NOT BE DISCLOSED TO THIRD PARTIES WITHOUT WRITTEN CONSENT OF DIVERSIFIED WOODCRAFTS, INC. ANY REPRODUCTION IN PART OR WHOLE WITHOUT WRITTEN CONSENT IS SUBJECT TO LEGAL ACTION.



300 South Krueger Street
Suring, WI 54174
diversifiedwoodcrafts.com

TITLE:
STEEL WORKBENCH
ASSEMBLY INSTRUCTIONS

REV.	DESCRIPTION	DATE	NAME	ECN NO.
A	CREATED DRAWING	11/28/16	EMK	-
REVISION LEVEL				

DRAWING NUMBER: WB SERIES	SCALE: NTS	SHEET: 1 OF 17	REVISION: REV A
-------------------------------------	---------------	-------------------	--------------------

TOOLS REQUIRED

1/2" WRENCH
1/2" SOCKET AND TORQUE WRENCH - OPTIONAL
DRILL
PHILIPS SCREW DRIVER

ASSEMBLY COMPONENTS

ITEMS INCLUDED	PART #	PART DESCRIPTION	QTY
TOP	16-0036 OR 16-0052	TOP,MPL, (2.25X28X64) OR TOP,MPL,(2.25X54X64)	1
STEEL BASE	VARIES	METAL BASE (STYLE VARIES)	VARIES
FLEXIBLE ANGLES - GREY	20-0001 OR 20-0002	FLEXIBLE ANGLES - 17" - AI18-GREY OR FLEXIBLE ANGLES - 42" - AI42-GREY	2
FLEXIBLE ANGLES - BLACK	236104 OR 236105	FLEXIBLE ANGLES - 17" - AI18-BLACK OR FLEXIBLE ANGLES - 42" - AI42-BLACK	2
HARDWARE	20-0050	FLEXIBLE - 4824363 - HARDWARE	1
GUSSET	253728	GUSSET,STEEL,12GAX8X8,ZINC PLATED	4
SCREWS - GUSSET	100037	SCREW,#10X5/8 QUAD PNHD LUB	12
VICES - OPTIONAL	234708	WISE - SHAIN CUSTOM VISE WITH LOGO	VARIES
HANDLE HARDWARE BAG	N/A	HARDWARE BAG (HANDLE, CAM, CAM PLATE, SCREWS, CLIP, LOCKING BARS INCLUDED)	1

NOTE:

1. TOPS ARE 2 1/4" MAPLE.
2. COMPONENTS VARY WITH STYLE OF STEEL WORKBENCH PURCHASED.
3. ****XX**** INDICATES ITEMS USED ONLY FOR 2 DOOR METAL BASE UNITS.

REV.	DESCRIPTION	DATE	NAME	ECN NO.
A	CREATED DRAWING	11/28/16	EMK	-
REVISION LEVEL				

ALL DIMENSIONS ARE IN INCHES UNLESS NOTED OTHERWISE	DWN BY: EMK	DATE DWN: 11/28/16
CABINET SQUARENESS = ± .0625	APR BY:	DATE APR:
FRACTIONAL VALUES = ± 1/32"	APR BY:	DATE APR:
- ALL VALUES ± OVERALL -		

CONFIDENTIAL:
ALL DESIGN RIGHTS RESERVED
THE INFORMATION, DATA, DESIGN, AND DRAWINGS EMBODIED IN THIS DOCUMENT AND ALL REPRODUCTIONS THEREOF ARE THE EXCLUSIVE PROPERTY OF DIVERSIFIED WOODCRAFTS, INC.

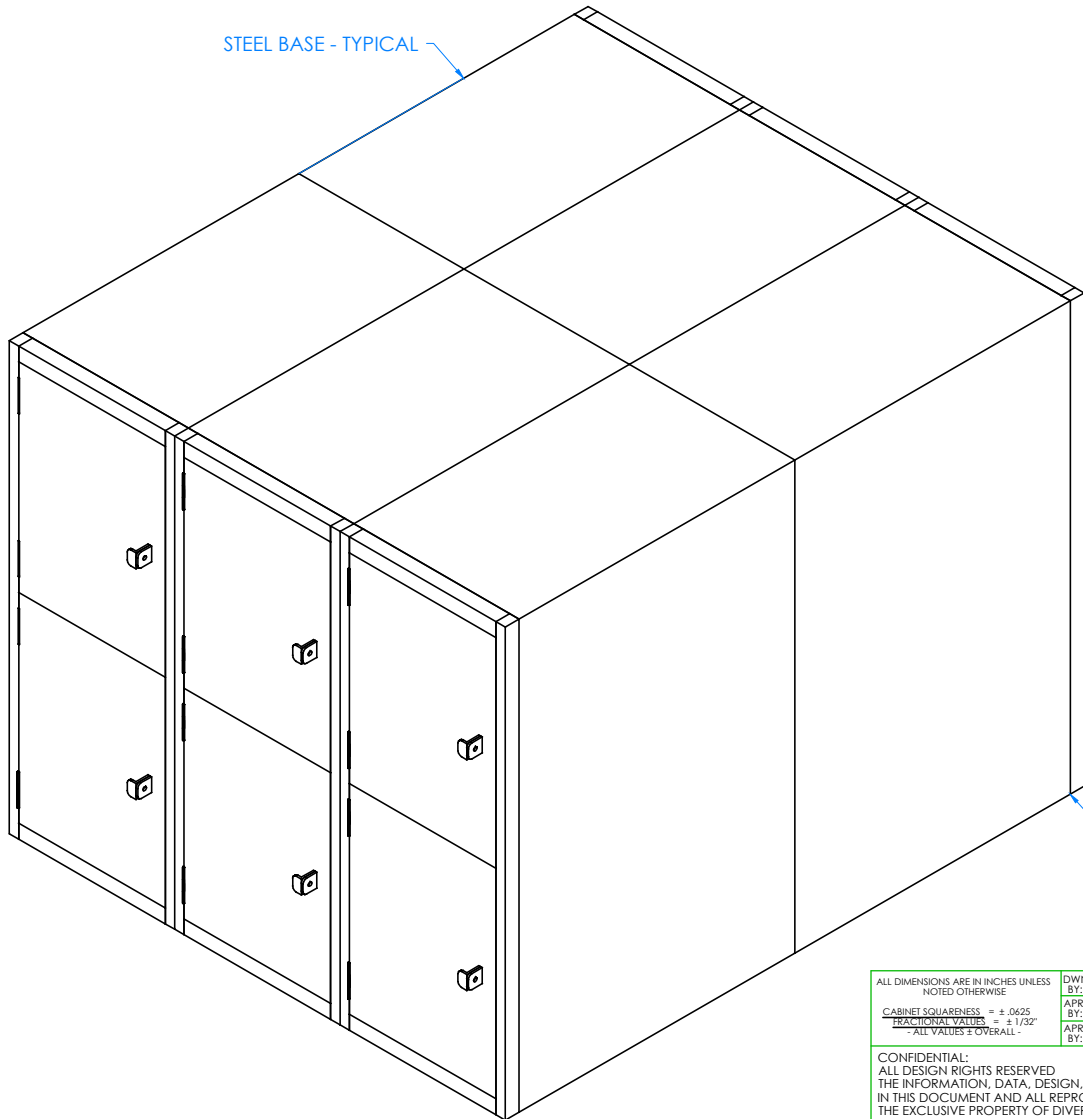
THESE DOCUMENTS ARE SUPPLIED WITH THE UNDERSTANDING THAT THEY WILL NOT BE DISCLOSED TO THIRD PARTIES WITHOUT WRITTEN CONSENT OF DIVERSIFIED WOODCRAFTS, INC. ANY REPRODUCTION IN PART OR WHOLE WITHOUT WRITTEN CONSENT IS SUBJECT TO LEGAL ACTION.



300 South Krueger Street
Suring, WI 54174
diversifiedwoodcrafts.com

TITLE:
STEEL WORKBENCH
TOOLS AND ASSEMBLY COMPONENTS

DRAWING NUMBER: WB SERIES	SCALE: NTS	SHEET: 2 OF 17	REVISION: REV A
-------------------------------------	---------------	-------------------	--------------------



STEP 1:

- POSITION STEEL BASE IN DESIRED LOCATION.
- IF YOU HAVE A FOUR STATION WORKBENCH, PLACE STEEL BASES BACK TO BACK.
- LEVEL CABINETS.
- ANCHOR CABINETS TO EACH OTHER.

****NOTE****
 CABINETS MUST BE LEVELED OR
 DOORS AND DRAWERS MAY NOT
 OPEN OR CLOSE CORRECTLY

NOTE:

1.

ALL DIMENSIONS ARE IN INCHES UNLESS NOTED OTHERWISE	DWN BY: EMK	DATE DWN: 11/28/16
CABINET SQUARENESS = ± .0625	APR BY:	DATE APR:
FRACTIONAL VALUES = ± 1/32"	APR BY:	DATE APR:
- ALL VALUES ± OVERALL -		

CONFIDENTIAL:
 ALL DESIGN RIGHTS RESERVED
 THE INFORMATION, DATA, DESIGN, AND DRAWINGS EMBODIED IN THIS DOCUMENT AND ALL REPRODUCTIONS THEREOF ARE THE EXCLUSIVE PROPERTY OF DIVERSIFIED WOODCRAFTS, INC.

THESE DOCUMENTS ARE SUPPLIED WITH THE UNDERSTANDING THAT THEY WILL NOT BE DISCLOSED TO THIRD PARTIES WITHOUT WRITTEN CONSENT OF DIVERSIFIED WOODCRAFTS, INC. ANY REPRODUCTION IN PART OR WHOLE WITHOUT WRITTEN CONSENT IS SUBJECT TO LEGAL ACTION.



300 South Krueger Street
 Suring, WI 54174
 diversifiedwoodcrafts.com

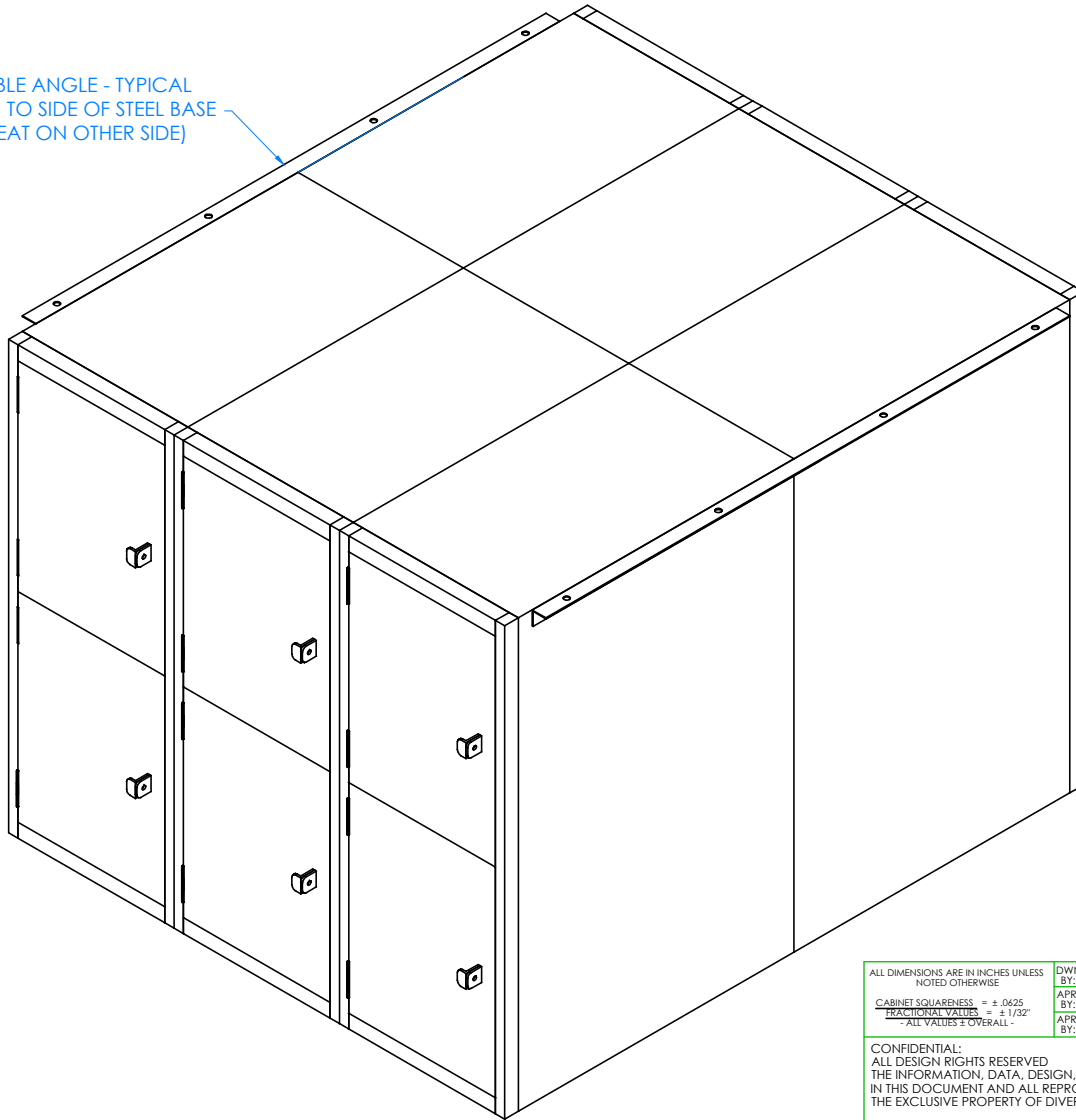
TITLE:
**STEEL WORKBENCH
 ASSEMBLY INSTRUCTIONS**

A	CREATED DRAWING	11/28/16	EMK	-
REV.	DESCRIPTION	DATE	NAME	ECN NO.

REVISION LEVEL

DRAWING NUMBER: WB SERIES	SCALE: NTS	SHEET: 3 OF 17	REVISION: REV A
-------------------------------------	---------------	-------------------	--------------------

FLEXIBLE ANGLE - TYPICAL
ATTACH TO SIDE OF STEEL BASE
(REPEAT ON OTHER SIDE)



STEP 2:

- PLACE FLEXIBLE ANGLE ON SIDE OF STEEL BASE.
- MAKE SURE IT IS CENTERED AND TOP EDGE OF FLEXIBLE ANGLE IS FLUSH WITH TOP EDGE OF CABINETS.
- ATTACH ANGLES TO SIDES OF BASE WITH HARDWARE PROVIDED.
- BOLTS GO HORIZONTALLY THROUGH ANGLE INTO BASE.
- NUTS AND WASHERS ARE TIGHTENED TO BOLT FROM INSIDE OF BASE.
- TIGHTEN NUT USING 1/2" WRENCH OR 1/2" SOCKET AND TORQUE WRENCH, TO A MINIMUM OF 12FT LBS BUT NOT TO EXCEED 17FT LBS.
- REPEAT ON OTHER SIDE.

NOTE:

1.

ALL DIMENSIONS ARE IN INCHES UNLESS NOTED OTHERWISE	DWN BY: EMK	DATE DWN: 11/28/16
CABINET SQUARENESS = ± .0625	APR BY:	DATE APR:
FRACTIONAL VALUES = ± 1/32"	APR BY:	DATE APR:
- ALL VALUES ± OVERALL -		

CONFIDENTIAL:
ALL DESIGN RIGHTS RESERVED
THE INFORMATION, DATA, DESIGN, AND DRAWINGS EMBODIED IN THIS DOCUMENT AND ALL REPRODUCTIONS THEREOF ARE THE EXCLUSIVE PROPERTY OF DIVERSIFIED WOODCRAFTS, INC.

THESE DOCUMENTS ARE SUPPLIED WITH THE UNDERSTANDING THAT THEY WILL NOT BE DISCLOSED TO THIRD PARTIES WITHOUT WRITTEN CONSENT OF DIVERSIFIED WOODCRAFTS, INC. ANY REPRODUCTION IN PART OR WHOLE WITHOUT WRITTEN CONSENT IS SUBJECT TO LEGAL ACTION.

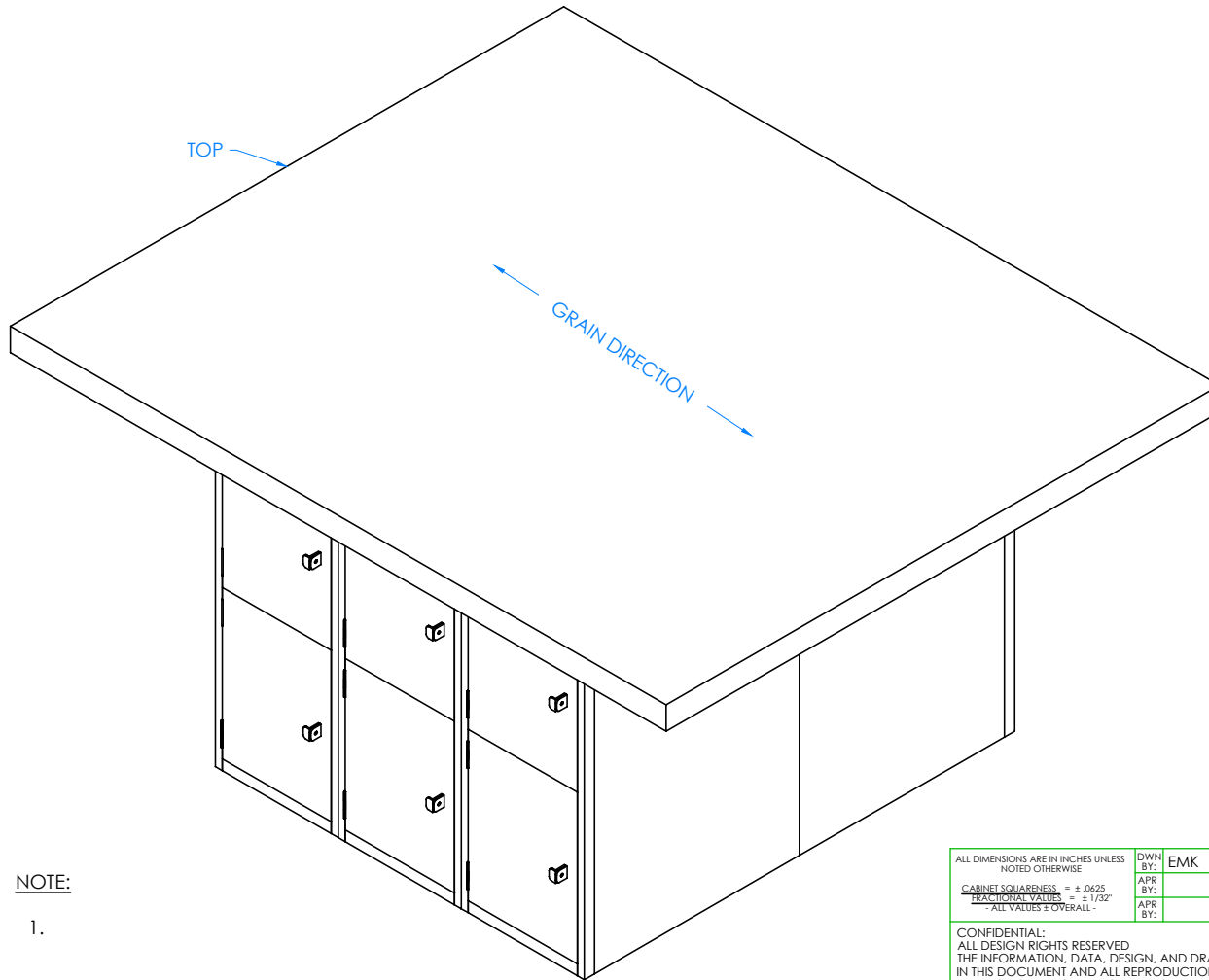


300 South Krueger Street
Suring, WI 54174
diversifiedwoodcrafts.com

TITLE:
STEEL WORKBENCH
ASSEMBLY INSTRUCTIONS

REV.	DESCRIPTION	DATE	NAME	ECN NO.
A	CREATED DRAWING	11/28/16	EMK	-
REVISION LEVEL				

DRAWING NUMBER: WB SERIES	SCALE: NTS	SHEET: 4 OF 17	REVISION: REV A
-------------------------------------	---------------	-------------------	--------------------



STEP 3:

- PLACE CARDBOARD ON TOP OF STEEL BASE IN CORNERS AND CENTER BEFORE INSTALLING TOP (NOT SHOWN).
- THIS ALLOWS MAPLE TOP TO BREATHE.
- LAY TOP ON STEEL BASE WITH PROPER OVERHANG (CENTERED ON WORKBENCH) AND GRAIN RUNNING PROPER DIRECTION.
- LAG SCREWS GO VERTICALLY THROUGH ANGLE SUPPORT UP INTO TOP.
- PRE-DRILL HOLES IN TOP FOR LAG SCREWS.

NOTE:

1.

ALL DIMENSIONS ARE IN INCHES UNLESS NOTED OTHERWISE	DWN BY: EMK	DATE DWN: 11/28/16
CABINET SQUARENESS = ± .0625	APR BY:	DATE APR:
FRACTIONAL VALUES = ± 1/32"	APR BY:	DATE APR:
- ALL VALUES ± OVERALL -		

CONFIDENTIAL:
 ALL DESIGN RIGHTS RESERVED
 THE INFORMATION, DATA, DESIGN, AND DRAWINGS EMBODIED IN THIS DOCUMENT AND ALL REPRODUCTIONS THEREOF ARE THE EXCLUSIVE PROPERTY OF DIVERSIFIED WOODCRAFTS, INC.

THESE DOCUMENTS ARE SUPPLIED WITH THE UNDERSTANDING THAT THEY WILL NOT BE DISCLOSED TO THIRD PARTIES WITHOUT WRITTEN CONSENT OF DIVERSIFIED WOODCRAFTS, INC. ANY REPRODUCTION IN PART OR WHOLE WITHOUT WRITTEN CONSENT IS SUBJECT TO LEGAL ACTION.



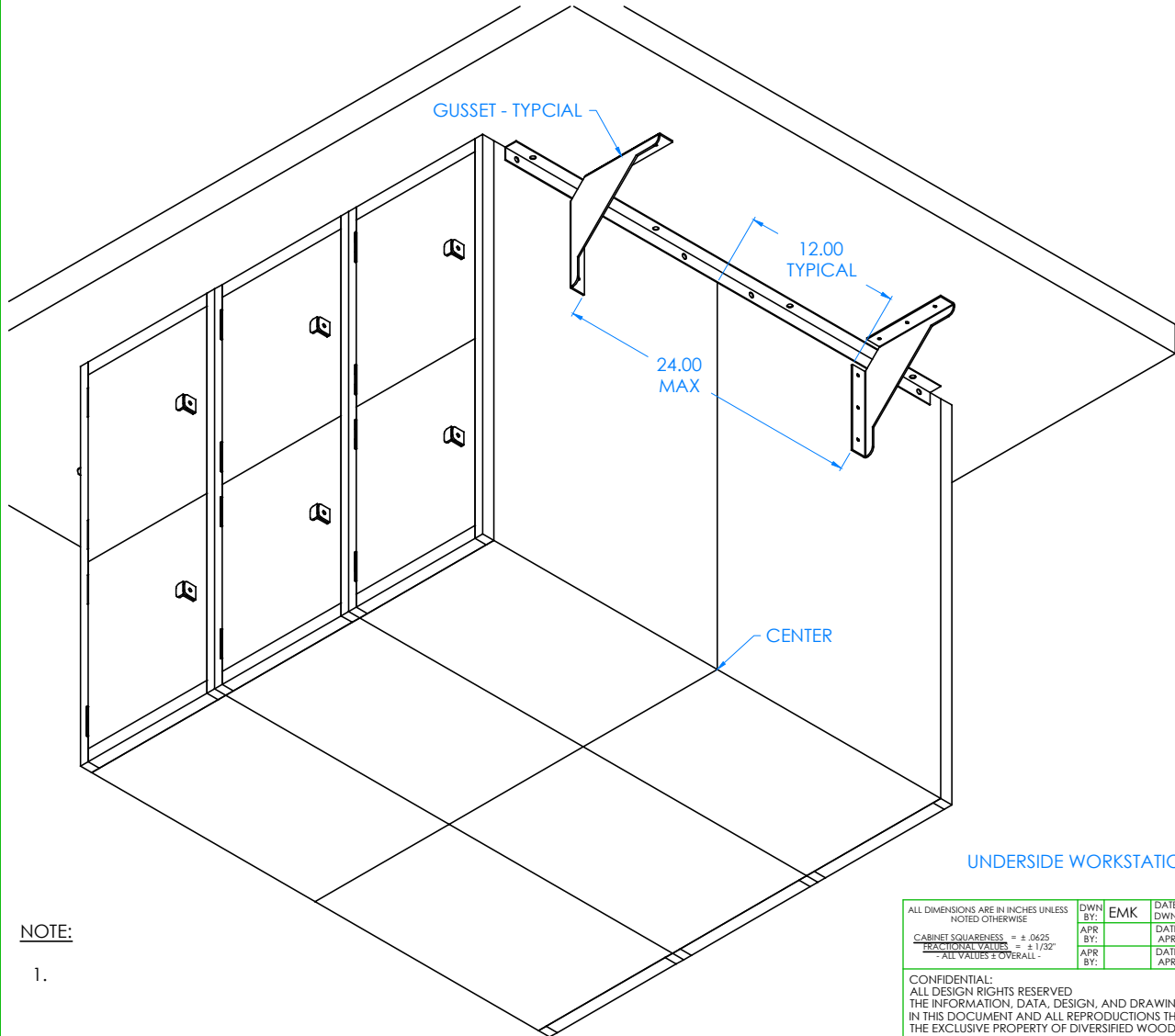
300 South Krueger Street
 Suring, WI 54174
 diversifiedwoodcrafts.com

TITLE:
**STEEL WORKBENCH
 ASSEMBLY INSTRUCTIONS**

REV.	DESCRIPTION	DATE	NAME	ECN NO.
A	CREATED DRAWING	11/28/16	EMK	-

REVISION LEVEL

DRAWING NUMBER: WB SERIES	SCALE: NTS	SHEET: 5 OF 17	REVISION: REV A
-------------------------------------	---------------	-------------------	--------------------



STEP 4:

- ATTACH STEEL GUSSETS TO TOP WITH CORRECT DISTANCE IN BETWEEN WITH HARDWARE PROVIDED.
- FROM CENTER OF BASE CABINETS, PLACE GUSSETS 12" TOWARDS FRONT OF WORKBENCH FOR A TOTAL OF 24" IN BETWEEN.
- THE EDGE OF THE GUSSET WITH THROUGH HOLES SHOULD BE FACING EACH OTHER.
- PRE-DRILL HOLES IN TOP TO PREVENT CRACKING.
- STEEL GUSSETS MUST BE TIGHT AGAINST CABINET SIDES.

UNDERSIDE WORKSTATION SHOWN

NOTE:
1.

ALL DIMENSIONS ARE IN INCHES UNLESS NOTED OTHERWISE	DWN BY: EMK	DATE DWN: 11/28/16
CABINET SQUARENESS = ± .0625	APR BY:	DATE APR:
FRACTIONAL VALUES = ± 1/32"	APR BY:	DATE APR:
- ALL VALUES ± OVERALL -		

CONFIDENTIAL:
ALL DESIGN RIGHTS RESERVED
THE INFORMATION, DATA, DESIGN, AND DRAWINGS EMBODIED IN THIS DOCUMENT AND ALL REPRODUCTIONS THEREOF ARE THE EXCLUSIVE PROPERTY OF DIVERSIFIED WOODCRAFTS, INC.

THESE DOCUMENTS ARE SUPPLIED WITH THE UNDERSTANDING THAT THEY WILL NOT BE DISCLOSED TO THIRD PARTIES WITHOUT WRITTEN CONSENT OF DIVERSIFIED WOODCRAFTS, INC. ANY REPRODUCTION IN PART OR WHOLE WITHOUT WRITTEN CONSENT IS SUBJECT TO LEGAL ACTION.

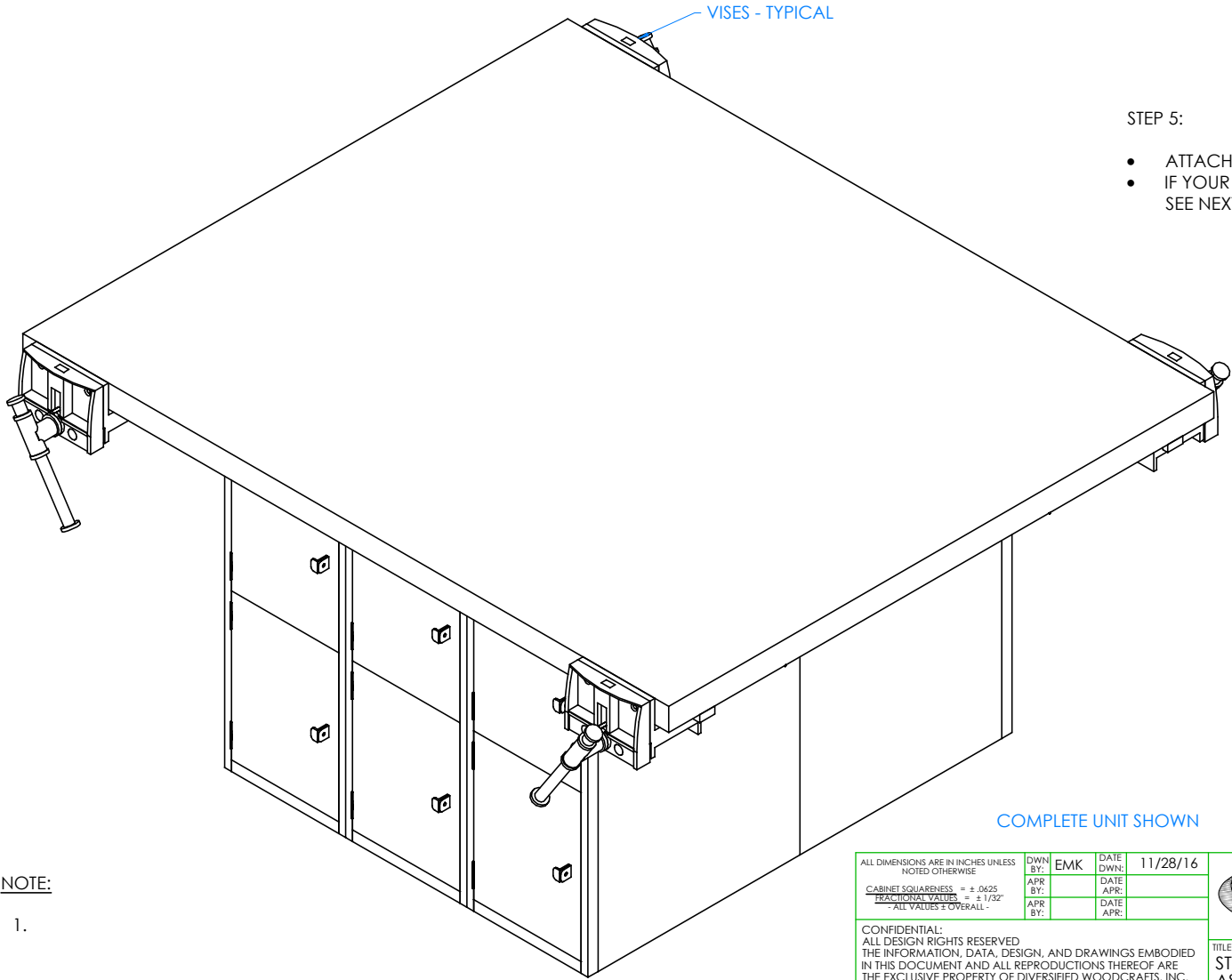


300 South Krueger Street
Suring, WI 54174
diversifiedwoodcrafts.com

TITLE:
STEEL WORKBENCH
ASSEMBLY INSTRUCTIONS

A	CREATED DRAWING	11/28/16	EMK	-
REV.	DESCRIPTION	DATE	NAME	ECN NO.
REVISION LEVEL				

DRAWING NUMBER: WB SERIES	SCALE: NTS	SHEET: 6 OF 17	REVISION: REV A
-------------------------------------	---------------	-------------------	--------------------



STEP 5:

- ATTACH VISES IF INCLUDED.
- IF YOUR UNIT IS A TWO DOOR LOCKER BASE WORKSTATION, SEE NEXT STEPS ON HOW TO ASSEMBLY HANDLE!

COMPLETE UNIT SHOWN

NOTE:
1.

ALL DIMENSIONS ARE IN INCHES UNLESS NOTED OTHERWISE	DWN BY: EMK	DATE DWN: 11/28/16
CABINET SQUARENESS = ± .0625	APR BY:	DATE APR:
FRACTIONAL VALUES = ± 1/32"	APR BY:	DATE APR:
- ALL VALUES ± OVERALL -		

CONFIDENTIAL:
ALL DESIGN RIGHTS RESERVED
THE INFORMATION, DATA, DESIGN, AND DRAWINGS EMBODIED IN THIS DOCUMENT AND ALL REPRODUCTIONS THEREOF ARE THE EXCLUSIVE PROPERTY OF DIVERSIFIED WOODCRAFTS, INC.

THESE DOCUMENTS ARE SUPPLIED WITH THE UNDERSTANDING THAT THEY WILL NOT BE DISCLOSED TO THIRD PARTIES WITHOUT WRITTEN CONSENT OF DIVERSIFIED WOODCRAFTS, INC. ANY REPRODUCTION IN PART OR WHOLE WITHOUT WRITTEN CONSENT IS SUBJECT TO LEGAL ACTION.



300 South Krueger Street
Suring, WI 54174
diversifiedwoodcrafts.com

TITLE:
STEEL WORKBENCH
ASSEMBLY INSTRUCTIONS

REV.	DESCRIPTION	DATE	NAME	ECN NO.
A	CREATED DRAWING	11/28/16	EMK	-
REVISION LEVEL				

DRAWING NUMBER: WB SERIES	SCALE: NTS	SHEET: 7 OF 17	REVISION: REV A
-------------------------------------	---------------	-------------------	--------------------

STEP 6:

- POSITION AND SECURE HANDLE TO DOOR.
- ATTACH WITH HARDWARE PROVIDED.

DOOR PANEL

SLOTTED MACHINE SCREW - TYPICAL

HANDLE

BACKSIDE OF DOOR SHOWN

NOTE:

1. THESE ARE FOR THE TWO DOOR LOCKER BASE UNITS:

1.1. EX.: WB2, WB2BL, WBD2, AND WBD2BL.

ALL DIMENSIONS ARE IN INCHES UNLESS NOTED OTHERWISE		DWN BY: EMK	DATE DWN: 11/28/16
CABINET SQUARENESS = ± .0625	APR BY:	DATE APR:	
FRACTIONAL VALUES = ± 1/32"	APR BY:	DATE APR:	
- ALL VALUES ± OVERALL -			

CONFIDENTIAL:
ALL DESIGN RIGHTS RESERVED
THE INFORMATION, DATA, DESIGN, AND DRAWINGS EMBODIED IN THIS DOCUMENT AND ALL REPRODUCTIONS THEREOF ARE THE EXCLUSIVE PROPERTY OF DIVERSIFIED WOODCRAFTS, INC.

THESE DOCUMENTS ARE SUPPLIED WITH THE UNDERSTANDING THAT THEY WILL NOT BE DISCLOSED TO THIRD PARTIES WITHOUT WRITTEN CONSENT OF DIVERSIFIED WOODCRAFTS, INC. ANY REPRODUCTION IN PART OR WHOLE WITHOUT WRITTEN CONSENT IS SUBJECT TO LEGAL ACTION.



300 South Krueger Street
Suring, WI 54174
diversifiedwoodcrafts.com

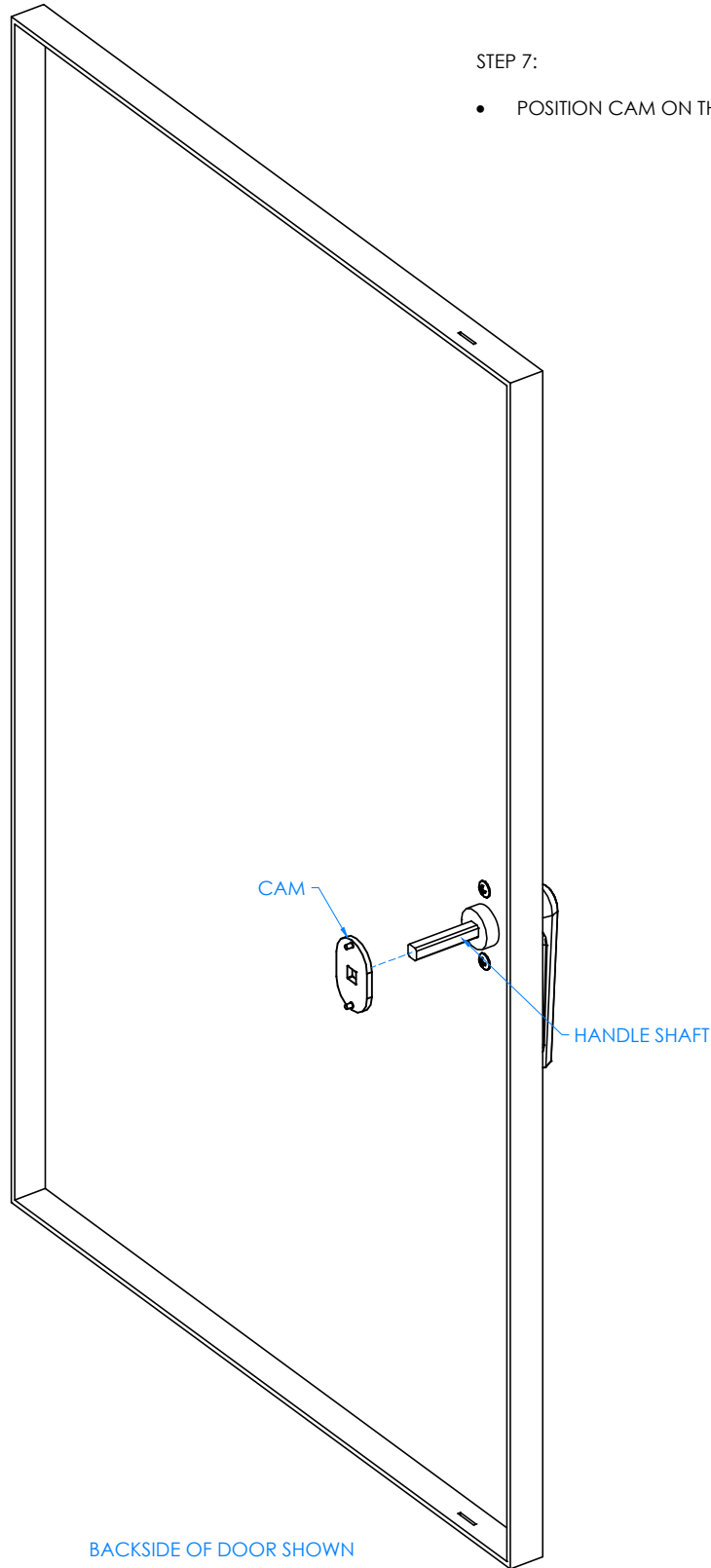
TITLE:
STEEL WORKBENCH
ASSEMBLY INSTRUCTIONS

REV.	DESCRIPTION	DATE	EMK NAME	N/A ECN No.
A	CREATED DRAWING	11/28/16	EMK	N/A
REVISION LEVEL				

DRAWING NUMBER:	SCALE:	SHEET:	REVISION:
WB SERIES	NTS	8 OF 17	REV A

STEP 7:

- POSITION CAM ON THE HANDLE SHAFT.



BACKSIDE OF DOOR SHOWN

NOTE:

1. THESE ARE FOR THE TWO DOOR LOCKER BASE UNITS:

1.1. EX.: WB2, WB2BL, WBD2, AND WBD2BL.

ALL DIMENSIONS ARE IN INCHES UNLESS NOTED OTHERWISE	DWN BY: EMK	DATE DWN: 11/28/16
CABINET SQUARENESS = ± .0625	APR BY:	DATE APR:
FRACTIONAL VALUES = ± 1/32"	APR BY:	DATE APR:
- ALL VALUES ± OVERALL -		

CONFIDENTIAL:
ALL DESIGN RIGHTS RESERVED
THE INFORMATION, DATA, DESIGN, AND DRAWINGS EMBODIED IN THIS DOCUMENT AND ALL REPRODUCTIONS THEREOF ARE THE EXCLUSIVE PROPERTY OF DIVERSIFIED WOODCRAFTS, INC.

THESE DOCUMENTS ARE SUPPLIED WITH THE UNDERSTANDING THAT THEY WILL NOT BE DISCLOSED TO THIRD PARTIES WITHOUT WRITTEN CONSENT OF DIVERSIFIED WOODCRAFTS, INC. ANY REPRODUCTION IN PART OR WHOLE WITHOUT WRITTEN CONSENT IS SUBJECT TO LEGAL ACTION.



300 South Krueger Street
Suring, WI 54174
diversifiedwoodcrafts.com

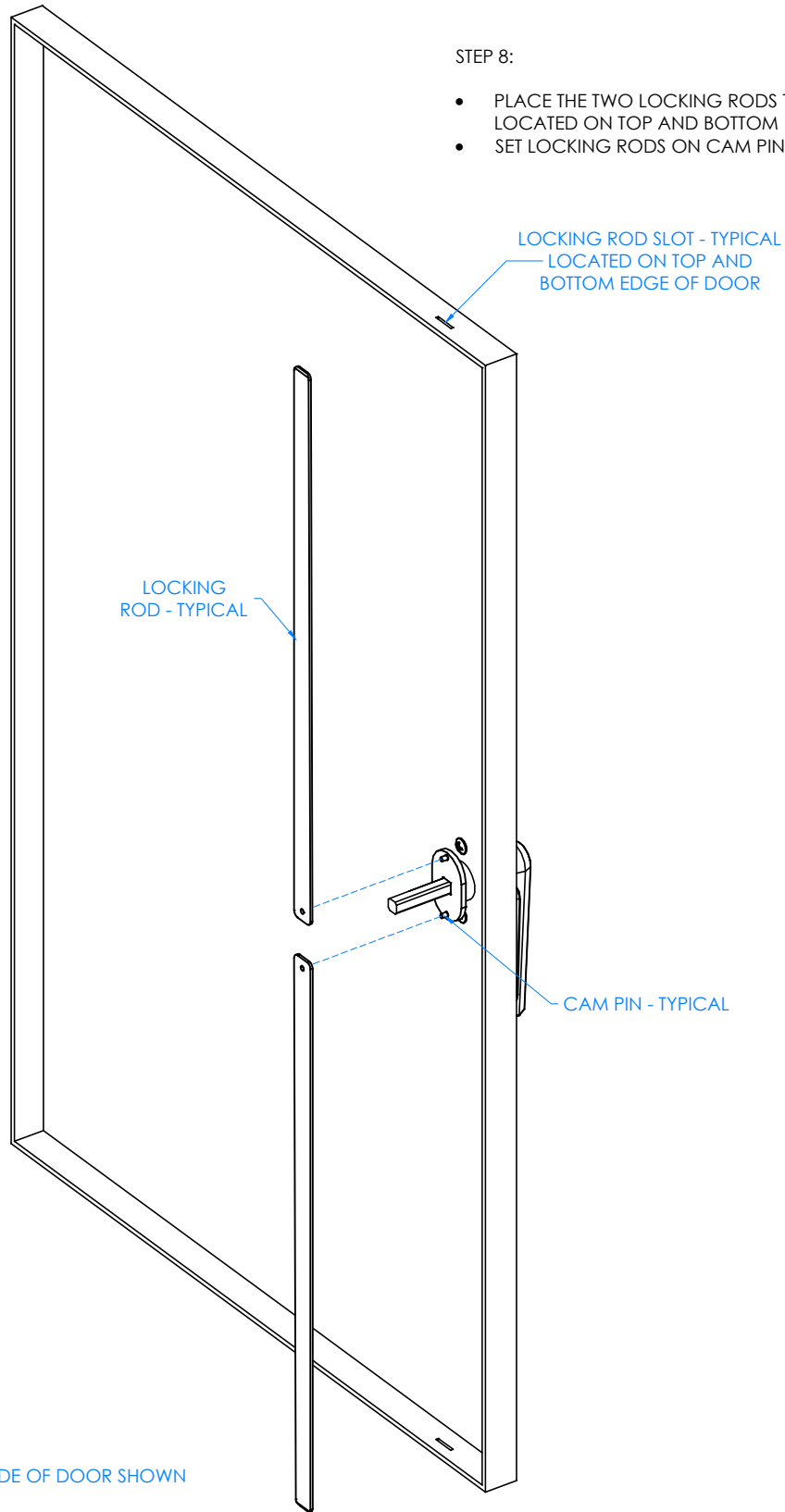
TITLE:
STEEL WORKBENCH
ASSEMBLY INSTRUCTIONS

REV.	DESCRIPTION	DATE	NAME	ECN No.
A	CREATED DRAWING	11/28/16	EMK	N/A
REVISION LEVEL				

DRAWING NUMBER:	SCALE:	SHEET:	REVISION:
WB SERIES	NTS	9 OF 17	REV A

STEP 8:

- PLACE THE TWO LOCKING RODS THROUGH THE SLOTS LOCATED ON TOP AND BOTTOM EDGES OF DOOR.
- SET LOCKING RODS ON CAM PINS.



NOTE:

1. THESE ARE FOR THE TWO DOOR LOCKER BASE UNITS:
1.1. EX.: WB2, WB2BL, WBD2, AND WBD2BL.

ALL DIMENSIONS ARE IN INCHES UNLESS NOTED OTHERWISE		DWN BY: EMK	DATE DWN: 11/28/16
CABINET SQUARENESS = ± .0625	APR BY:	DATE APR:	
FRACTIONAL VALUES = ± 1/32"	APR BY:	DATE APR:	
- ALL VALUES ± OVERALL -			

CONFIDENTIAL:
ALL DESIGN RIGHTS RESERVED
THE INFORMATION, DATA, DESIGN, AND DRAWINGS EMBODIED IN THIS DOCUMENT AND ALL REPRODUCTIONS THEREOF ARE THE EXCLUSIVE PROPERTY OF DIVERSIFIED WOODCRAFTS, INC.

THESE DOCUMENTS ARE SUPPLIED WITH THE UNDERSTANDING THAT THEY WILL NOT BE DISCLOSED TO THIRD PARTIES WITHOUT WRITTEN CONSENT OF DIVERSIFIED WOODCRAFTS, INC. ANY REPRODUCTION IN PART OR WHOLE WITHOUT WRITTEN CONSENT IS SUBJECT TO LEGAL ACTION.

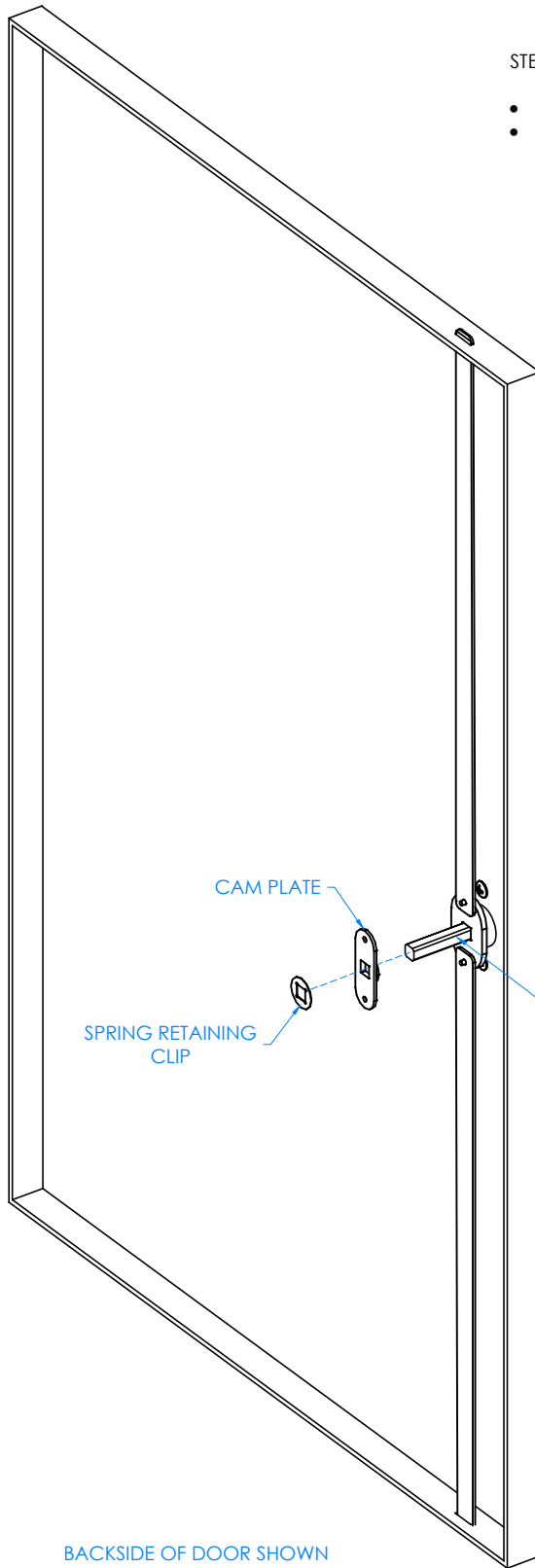


300 South Krueger Street
Suring, WI 54174
diversifiedwoodcrafts.com

TITLE:
STEEL WORKBENCH
ASSEMBLY INSTRUCTIONS

REV.	DESCRIPTION	DATE	NAME	ECN No.
A	CREATED DRAWING	11/28/16	EMK	N/A
REVISION LEVEL				

DRAWING NUMBER:	SCALE:	SHEET:	REVISION:
WB SERIES	NTS	10 OF 17	REV A



STEP 9:

- INSERT CAM PLATE ON HANDLE SHAFT AND CAM PINS.
- SECURE WITH SPRING RETAINER CLIP.

CAM PLATE

SPRING RETAINING CLIP

HANDLE SHAFT

BACKSIDE OF DOOR SHOWN

NOTE:

1. THESE ARE FOR THE TWO DOOR LOCKER BASE UNITS:

1.1. EX.: WB2, WB2BL, WBD2, AND WBD2BL.

ALL DIMENSIONS ARE IN INCHES UNLESS NOTED OTHERWISE	DWN BY: EMK	DATE DWN: 11/28/16
CABINET SQUARENESS = ± .0625	APR BY:	DATE APR:
FRACTIONAL VALUES = ± 1/32"	APR BY:	DATE APR:
- ALL VALUES ± OVERALL -		

CONFIDENTIAL:
ALL DESIGN RIGHTS RESERVED
THE INFORMATION, DATA, DESIGN, AND DRAWINGS EMBODIED IN THIS DOCUMENT AND ALL REPRODUCTIONS THEREOF ARE THE EXCLUSIVE PROPERTY OF DIVERSIFIED WOODCRAFTS, INC.

THESE DOCUMENTS ARE SUPPLIED WITH THE UNDERSTANDING THAT THEY WILL NOT BE DISCLOSED TO THIRD PARTIES WITHOUT WRITTEN CONSENT OF DIVERSIFIED WOODCRAFTS, INC. ANY REPRODUCTION IN PART OR WHOLE WITHOUT WRITTEN CONSENT IS SUBJECT TO LEGAL ACTION.

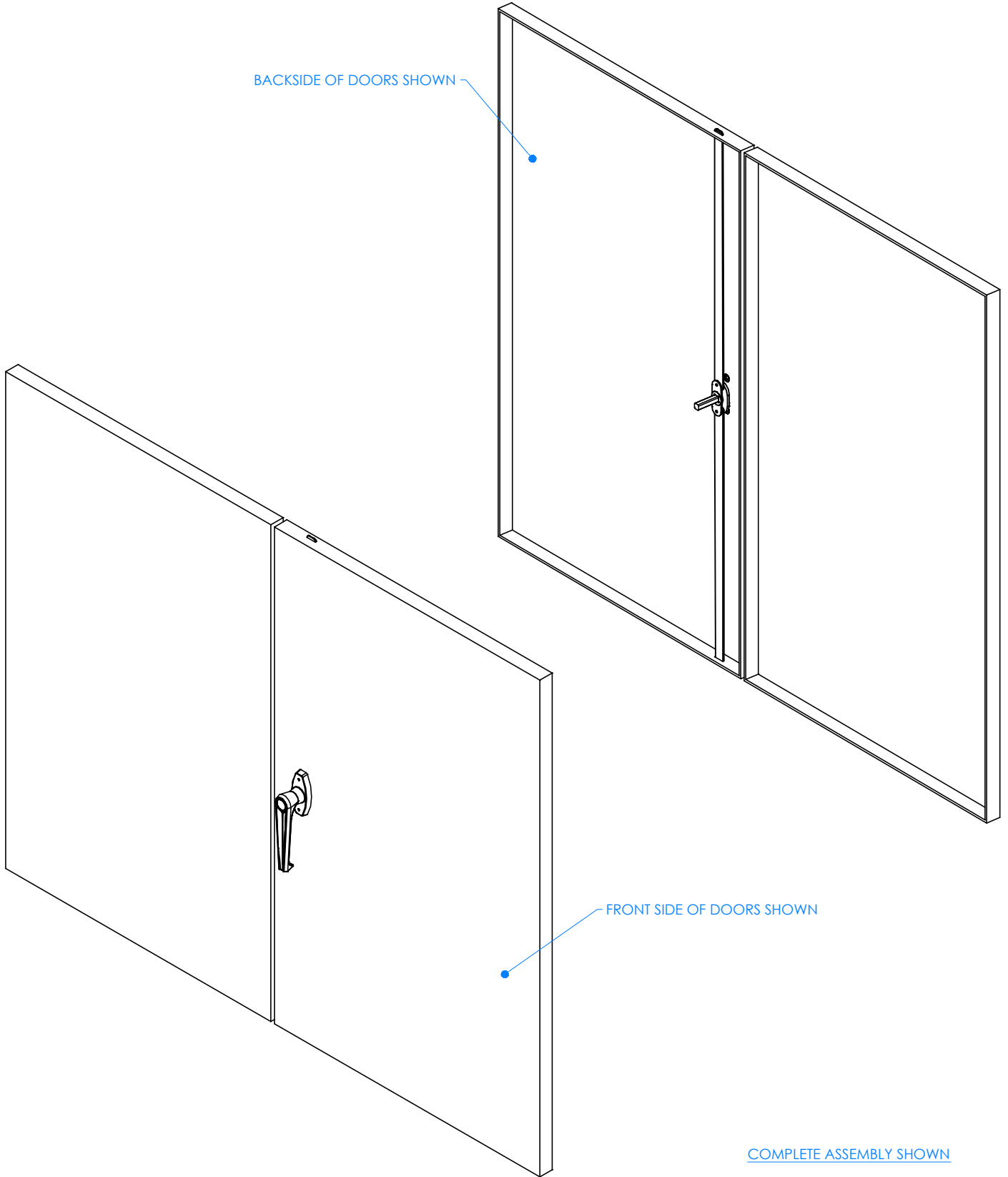


300 South Krueger Street
Suring, WI 54174
diversifiedwoodcrafts.com

TITLE:
STEEL WORKBENCH
ASSEMBLY INSTRUCTIONS

REV.	DESCRIPTION	DATE	NAME	ECN No.
A	CREATED DRAWING	11/28/16	EMK	N/A
REVISION LEVEL				

DRAWING NUMBER:	SCALE:	SHEET:	REVISION:
WB SERIES	NTS	11 OF 17	REV A



COMPLETE ASSEMBLY SHOWN

NOTE:

- 1. THESE ARE FOR THE TWO DOOR LOCKER BASE UNITS:
- 1.1. EX.: WB2, WB2BL, WBD2, AND WBD2BL.

ALL DIMENSIONS ARE IN INCHES UNLESS NOTED OTHERWISE		DWN BY: EMK	DATE DWN: 11/28/16
CABINET SQUARENESS = ± .0625		APR BY:	DATE APR:
FRACTIONAL VALUES = ± 1/32"		APR BY:	DATE APR:
- ALL VALUES ± OVERALL -			

CONFIDENTIAL:
 ALL DESIGN RIGHTS RESERVED
 THE INFORMATION, DATA, DESIGN, AND DRAWINGS EMBODIED IN THIS DOCUMENT AND ALL REPRODUCTIONS THEREOF ARE THE EXCLUSIVE PROPERTY OF DIVERSIFIED WOODCRAFTS, INC.

THESE DOCUMENTS ARE SUPPLIED WITH THE UNDERSTANDING THAT THEY WILL NOT BE DISCLOSED TO THIRD PARTIES WITHOUT WRITTEN CONSENT OF DIVERSIFIED WOODCRAFTS, INC. ANY REPRODUCTION IN PART OR WHOLE WITHOUT WRITTEN CONSENT IS SUBJECT TO LEGAL ACTION.



300 South Krueger Street
 Suring, WI 54174
 diversifiedwoodcrafts.com

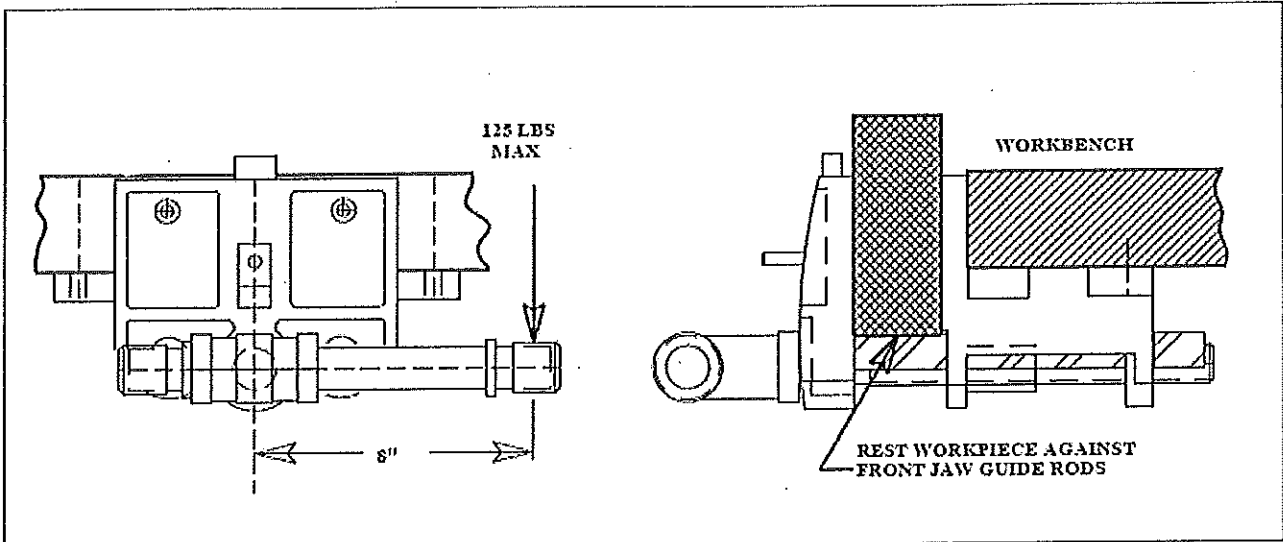
TITLE:
 STEEL WORKBENCH
 ASSEMBLY INSTRUCTIONS

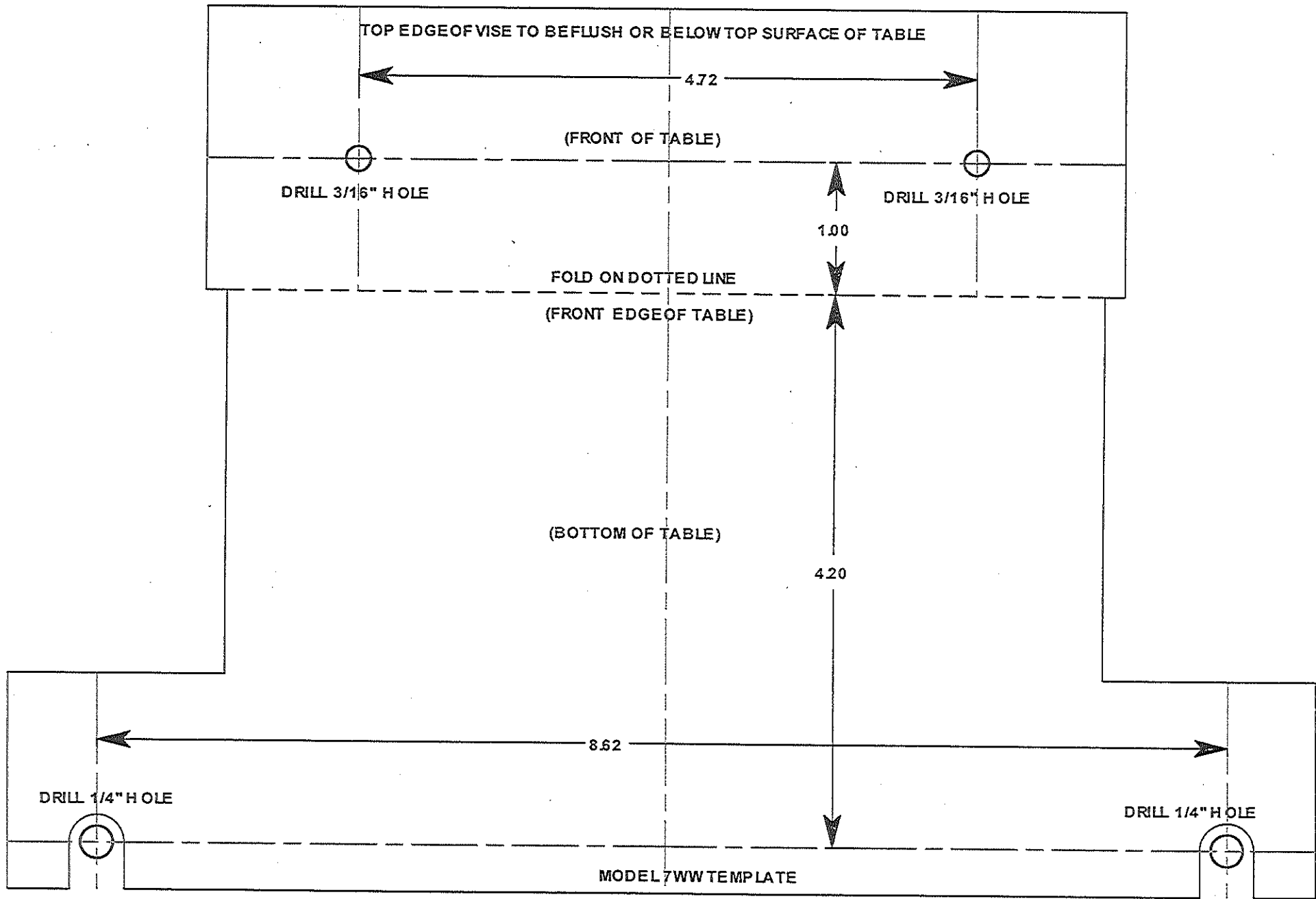
REV.	DESCRIPTION	DATE	EMK NAME	N/A ECN No.
A	CREATED DRAWING	11/28/16	EMK	N/A
REVISION LEVEL				

DRAWING NUMBER: WB SERIES	SCALE: NTS	SHEET: 12 OF 17	REVISION: REV A
-------------------------------------	---------------	--------------------	--------------------

Caution:

Do not exceed the maximum applied torque of 1,000 inch-pounds (125 foot-pounds). Also, failure to rest work piece against the front jaw and the guide rods may also cause the castings to flex resulting in failure. See Figure 2.





Butcher Block (Varnished Tops) *Maintenance & Repair*

SPILLS

- Be sure any spills are cleaned up immediately. Excessive moisture and certain chemicals allowed to stand on a finished surface can cause damage.
- Clean spills or soiled areas with a damp cloth and dry thoroughly.
- Periodically, apply a coat of spray wax, paste wax, or lemon oil to finished surface. This will enhance and protect the finish and insure a moisture barrier is intact in the event the finish becomes scratched or worn.

SCRATCHES & DENTS

- Minor scratches and dents can be easily repaired by rubbing the affected area with steel wool or fine grit (#220) sandpaper. Remember, when rubbing or sanding always sand with the grain of the wood. Feather edges of repair in to the surrounding area. Remove all dust and residue and apply a coat of clear lacquer type finish or paint. Clear lacquer type finish can be purchased at most paint or hardware stores. Small cans of touch-up paint are available from your dealer or representative. Paint colors can easily be matched at most paint stores. Confine touch-up only to the area that was sanded. Remember, follow manufacturing directions on product label when refinishing.
- Major scratches and gouges where large portions of wood have been removed or damaged should be handled by a professional experienced in furniture repair with the proper tools and equipment.

MINERAL STREAKS

- Mineral Streaks—Natural Coloring of wood due to mineral deposits in the tree. Repair is not required and will add to the individuality of your table. Sizes can range up to a 1/4" wide and up to 3" in length.

HUMIDITY GUIDELINES

Your Butcher Block was kiln-dried to an initial moisture content of 7.6%. In order to maintain the beauty and integrity of your Butcher Block, it is recommended that special care be taken to keep the relative humidity and temperature within your home or warehouse in the highlighted range. This will limit the amount of expansion and contraction in your natural wood product and minimize the risk of environmental damage.

- **Environment Acclimation:** Environmental damage does not constitute defective product. Allowing your Butcher Block to acclimate to the environment for at least 72 hours prior to installation, following recommended installation practices that allow your Butcher Block to move with the conditions and controlling the environment itself are all key factors that determine the life of your product.
- **Temperature Changes:** It is important to note that as winter temperatures drop, so does relative humidity in the air. The heaters come on which further dries the air. Keeping the area humidified to an acceptable level usually becomes necessary during the winter months. The opposite is true in spring and summer as humidity rises, dehumidifiers and air conditioners become the method of control.

		RELATIVE HUMIDITY %																	
		5	10	15	20	25	30	35	40	45	50	55	60	65	70	75	80	85	90
TEMPERATURE (°F)	30	1.4	2.6	3.7	4.6	5.5	6.3	7.1	7.8	8.7	9.5	10.4	11.3	12.4	13.5	14.9	17	18.5	21
	40	1.4	2.6	3.7	4.6	5.5	6.3	7.1	7.8	8.7	9.5	10.4	11.3	12.4	13.5	14.9	17	18.5	21
	50	1.4	2.6	3.6	4.6	5.5	6.3	7.1	7.9	8.7	9.5	10.3	11.2	12.3	13.4	14.8	16	18.4	20.9
	60	1.3	2.5	3.6	4.6	5.4	6.2	7	7.8	8.6	9.4	10.2	11.1	12.1	13.3	14.6	16	18.2	20.7
	70	1.3	2.5	3.5	4.5	5.4	6.2	6.9	7.7	8.5	9.2	10.1	11	12	13.1	14.4	16	17.9	20.5
	80	1.3	2.4	3.5	4.4	5.3	6.1	6.8	7.6	8.3	9.1	9.9	10.8	11.7	12.9	14.2	16	17.7	20.2
	90	1.2	2.3	3.4	4.3	5.1	5.9	6.7	7.4	8.1	8.9	9.7	10.5	11.85	12.6	13.9	15	17.3	19.8
	100	1.2	2.3	3.3	4.2	5	5.8	6.5	7.2	7.9	8.7	9.5	10.3	11.2	12.3	13.6	15	17	19.5

Example: If conditions in a warehouse are 60% relative humidity at 50 degrees. Fahrenheit Dry wood will pick up moisture until 11.2% is reached, regardless of wood species and initial moisture content.