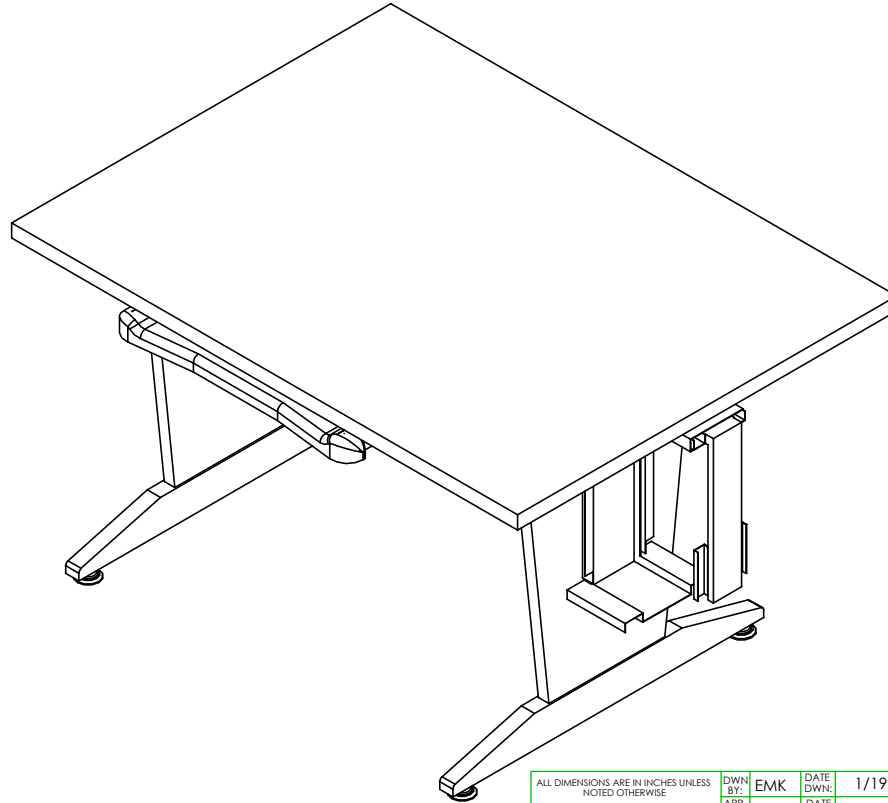


# ART/CAD TABLE

CDTC-60  
ASSEMBLY INSTRUCTIONS



## NOTE:

1. MODEL VIEWS MAY NOT REPRESENT EXACT MODEL PURCHASED

ALL DIMENSIONS ARE IN INCHES UNLESS NOTED OTHERWISE  
CABINET SQUARENESS =  $\pm .0625$   
FRACTIONAL VALUES =  $\pm 1/32"$   
- ALL VALUES  $\pm$  OVERALL -

DWN BY:	EMK	DATE DWN:	1/19/15
APR BY:		DATE APR:	
APR BY:		DATE APR:	

CONFIDENTIAL:  
ALL DESIGN RIGHTS RESERVED  
THE INFORMATION, DATA, DESIGN, AND DRAWINGS EMBODIED IN THIS DOCUMENT AND ALL REPRODUCTIONS THEREOF ARE THE EXCLUSIVE PROPERTY OF DIVERSIFIED WOODCRAFTS, INC.

THESE DOCUMENTS ARE SUPPLIED WITH THE UNDERSTANDING THAT THEY WILL NOT BE DISCLOSED TO THIRD PARTIES WITHOUT WRITTEN CONSENT OF DIVERSIFIED WOODCRAFTS, INC. ANY REPRODUCTION IN PART OR WHOLE WITHOUT WRITTEN CONSENT IS SUBJECT TO LEGAL ACTION.



300 South Krueger Street  
Suring, WI 54174  
diversifiedwoodcrafts.com

TITLE:  
ART/CAD TABLE  
ASSEMBLY INSTRUCTIONS

A	CREATED ASSEMBLY INSTRUCTIONS	1/19/15	EMK	-
REV.	DESCRIPTION	DATE	NAME	ECN NO.
REVISION LEVEL				

DRAWING NUMBER:	CDTC-60	SCALE:	NTS	SHEET:	1 OF 7	REVISION:	REV A
-----------------	---------	--------	-----	--------	--------	-----------	-------

**TOOLS REQUIRED**

4MM ALLENWRENCH

SCREW DRIVER

**ASSEMBLY COMPONENTS**

ITEMS INCLUDED	PART #	PART DESCRIPTION	QTY
TOP	235361	TOP, PLAM, 1.25X36X48, ALMOND	1
LEG PANEL ASSEMBLY	N/A	LEG, PANEL, PED, ASSY, 30H	2
PT HARDWARE	15-0069	PT HARDWARE BAG	1
STRETCHER - LOWER	228501	STRETCHER - 1.00"THK X 2.50"W X 34.50"L	1
STRETCHER - UPPER	227927	STRETCHERS - 1.00"THK X 2.50"W X 34.50"L	1
CONFIRMATS - STRETCHERS	237959	SCREW, 7MMX70MM, CONN, ALLENHEAD, BLACK	8
CPU BRACKET	232171	BRACKET, MOUNTING, CPU, UNIT	1
KEYBOARD TRAY KIT	214416	TRAY, KEYBOARD, SLIDE OUT, #KVKD100	1
MOUSE TRAY	232173	TRAY, MOUSE, KIT	1
**MONITOR BASE ASSEMBLY**	243335	HAFELE MONITOR BASE ASSEMBLY	1
**MONITOR ARM**	15-0185	HAFELE FLAT SCREEN ARM	1

**NOTE:**

1. \*\*XX\*\* INDICATES PARTS USED FOR A FLAT PANEL MONITOR ARM (OPTIONAL).

A	CREATED ASSEMBLY INSTRUCTIONS	1/19/15	EMK	-
REV.	DESCRIPTION	DATE	NAME	ECN NO.
REVISION LEVEL				

ALL DIMENSIONS ARE IN INCHES UNLESS NOTED OTHERWISE	DWN BY: EMK	DATE DWN: 1/19/15
CABINET SQUARENESS = $\pm .0625$	APR BY:	DATE APR:
FRAMING VALUES = $\pm 1/32"$	APR BY:	DATE APR:
- ALL VALUES $\pm$ OVERALL -		
CONFIDENTIAL: ALL DESIGN RIGHTS RESERVED THE INFORMATION, DATA, DESIGN, AND DRAWINGS EMBODIED IN THIS DOCUMENT AND ALL REPRODUCTIONS THEREOF ARE THE EXCLUSIVE PROPERTY OF DIVERSIFIED WOODCRAFTS, INC.		
THESE DOCUMENTS ARE SUPPLIED WITH THE UNDERSTANDING THAT THEY WILL NOT BE DISCLOSED TO THIRD PARTIES WITHOUT WRITTEN CONSENT OF DIVERSIFIED WOODCRAFTS, INC. ANY REPRODUCTION IN PART OR WHOLE WITHOUT WRITTEN CONSENT IS SUBJECT TO LEGAL ACTION.		



300 South Krueger Street  
Suring, WI 54174  
diversifiedwoodcrafts.com

TITLE:  
ART/CAD TABLE  
TOOLS AND ASSEMBLY COMPONENTS

DRAWING NUMBER:

CDTC-60

SCALE:

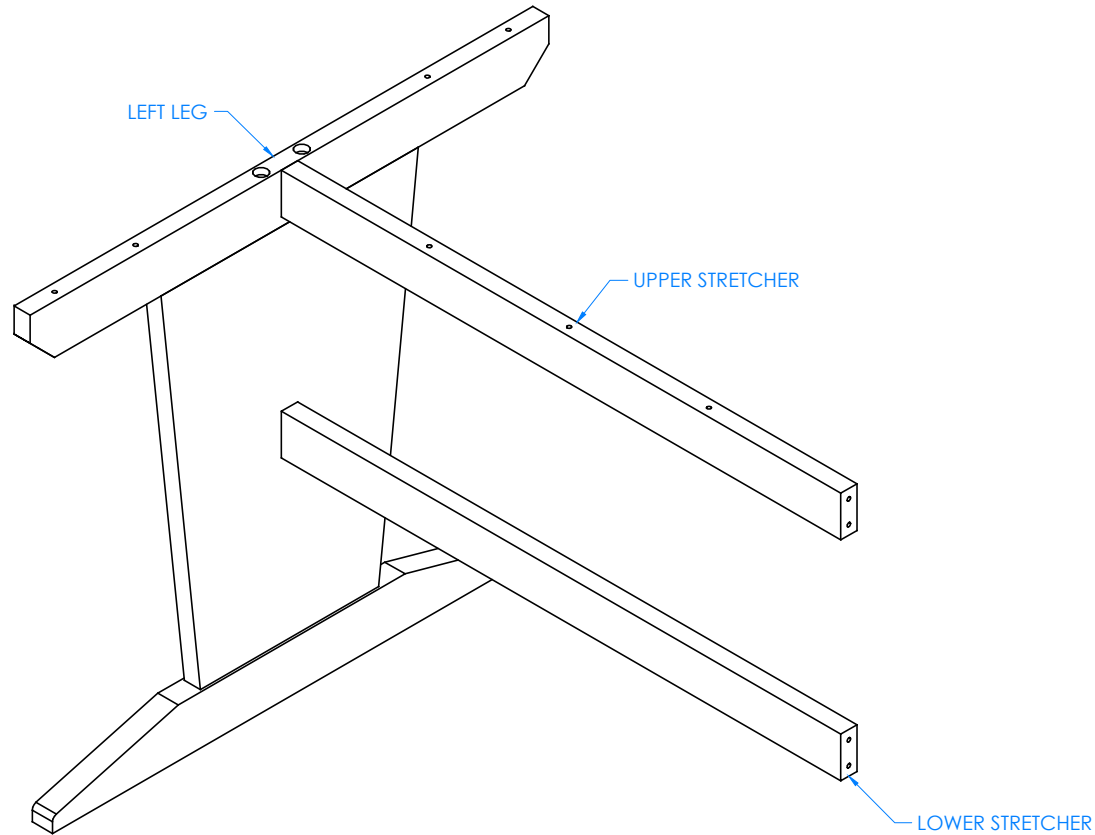
NTS

SHEET:

2 OF 7

REVISION:

REV A



## STEP 1:

- ATTACH STRETCHERS TO LEFT LEG WITH HARDWARE PROVIDED.
- UPPER STRETCHER WILL HAVE DRILLED HOLES ON TOP EDGE.

## NOTE:

1.

ALL DIMENSIONS ARE IN INCHES UNLESS NOTED OTHERWISE  
 CABINET SQUARENESS =  $\pm .0625$   
 PRAGMATICAL VALUES =  $\pm 1/32"$   
 - ALL VALUES  $\pm$  OVERALL -

DWN BY:	EMK	DATE DWN:	1/19/15
APR BY:		DATE APR:	
APR BY:		DATE APR:	

CONFIDENTIAL:  
 ALL DESIGN RIGHTS RESERVED  
 THE INFORMATION, DATA, DESIGN, AND DRAWINGS EMBODIED IN THIS DOCUMENT AND ALL REPRODUCTIONS THEREOF ARE THE EXCLUSIVE PROPERTY OF DIVERSIFIED WOODCRAFTS, INC.

THESE DOCUMENTS ARE SUPPLIED WITH THE UNDERSTANDING THAT THEY WILL NOT BE DISCLOSED TO THIRD PARTIES WITHOUT WRITTEN CONSENT OF DIVERSIFIED WOODCRAFTS, INC. ANY REPRODUCTION IN PART OR WHOLE WITHOUT WRITTEN CONSENT IS SUBJECT TO LEGAL ACTION.

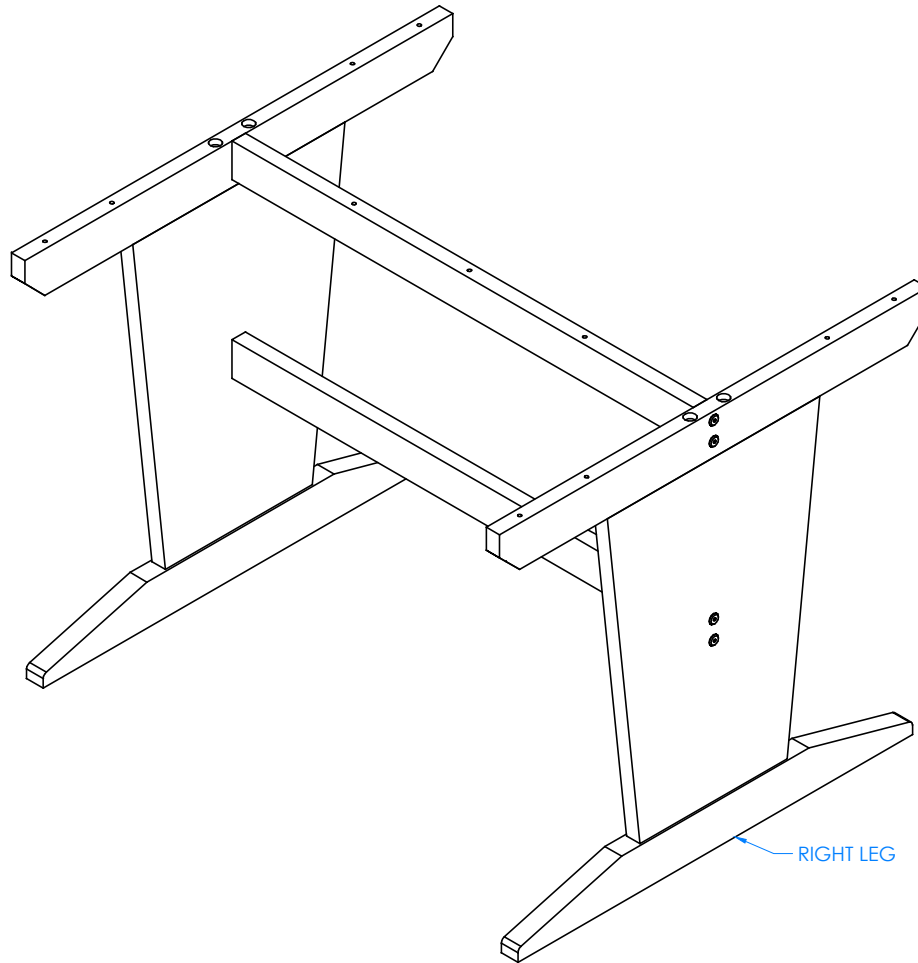


300 South Krueger Street  
 Suring, WI 54174  
[diversifiedwoodcrafts.com](http://diversifiedwoodcrafts.com)

TITLE:  
 ART/CAD TABLE  
 ASSEMBLY INSTRUCTIONS

A	CREATED ASSEMBLY INSTRUCTIONS	1/19/15	EMK	-
REV.	DESCRIPTION	DATE	NAME	ECN NO.
REVISION LEVEL				

DRAWING NUMBER:	SCALE:	SHEET:	REVISION:
CDTC-60	NTS	3 OF 7	REV A



## STEP 2:

- ATTACH RIGHT LEG TO STRETCHER WITH HARDWARE PROVIDED.
- MAKE SURE EACH CONFIRMATS ARE TIGHT AND STRETCHERS ARE STRAIGHT.

## NOTE:

1.

A	CREATED ASSEMBLY INSTRUCTIONS	1/19/15	EMK	-
REV.	DESCRIPTION	DATE	NAME	ECN NO.
REVISION LEVEL				

ALL DIMENSIONS ARE IN INCHES UNLESS NOTED OTHERWISE  
 CABINET SQUARENESS =  $\pm .0625$   
 FRAMING VALUES =  $\pm 1/32$   
 - ALL VALUES  $\pm$  OVERALL -

CONFIDENTIAL:  
 ALL DESIGN RIGHTS RESERVED  
 THE INFORMATION, DATA, DESIGN, AND DRAWINGS EMBODIED IN THIS DOCUMENT AND ALL REPRODUCTIONS THEREOF ARE THE EXCLUSIVE PROPERTY OF DIVERSIFIED WOODCRAFTS, INC.

THESE DOCUMENTS ARE SUPPLIED WITH THE UNDERSTANDING THAT THEY WILL NOT BE DISCLOSED TO THIRD PARTIES WITHOUT WRITTEN CONSENT OF DIVERSIFIED WOODCRAFTS, INC. ANY REPRODUCTION IN PART OR WHOLE WITHOUT WRITTEN CONSENT IS SUBJECT TO LEGAL ACTION.

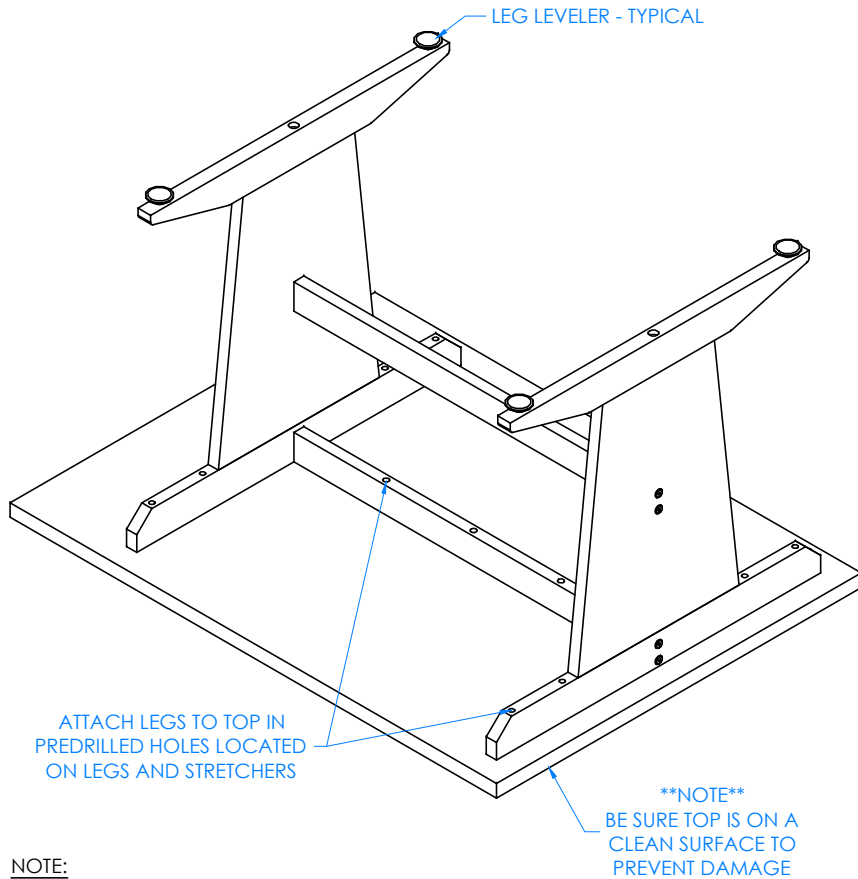
DWN BY:	EMK	DATE DWN:	1/19/15
APR BY:		DATE APR:	
APR BY:		DATE APR:	



300 South Krueger Street  
 Suring, WI 54174  
[diversifiedwoodcrafts.com](http://diversifiedwoodcrafts.com)

TITLE:  
 ART/CAD TABLE  
 ASSEMBLY INSTRUCTIONS

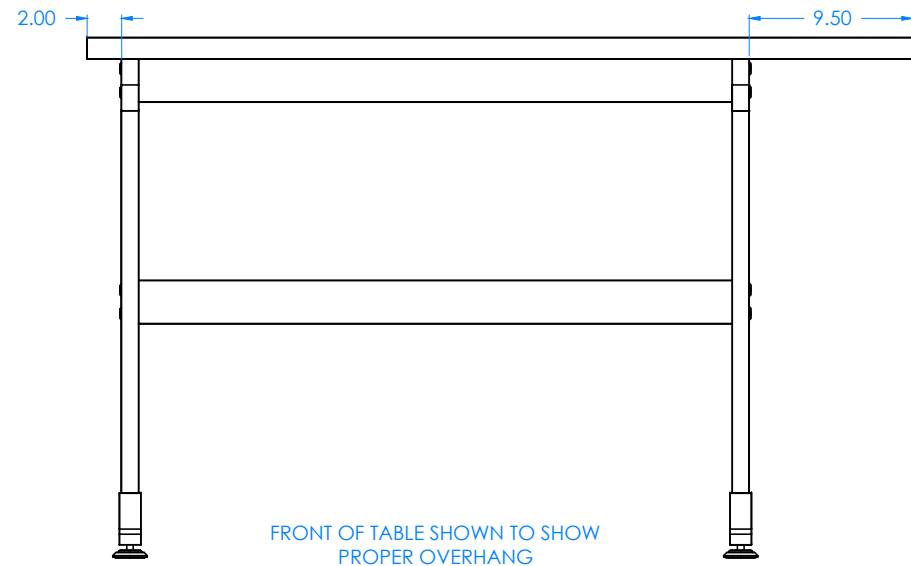
DRAWING NUMBER:	SCALE:	SHEET:	REVISION:
CDTC-60	NTS	4 OF 7	REV A

**NOTE:**

1.

**STEP 3:**

- FLIP LEG ASSEMBLIES OVER.
- PLACE ON TOP WITH PROPER OVERHANG.
- ATTACH LEG ASSEMBLY TO TOP USING HARDWARE PROVIDED.
- SCREW LEG LEVELERS INTO T-NUT ON BOTTOM OF LEGS.



ALL DIMENSIONS ARE IN INCHES UNLESS NOTED OTHERWISE  
 CABINET SQUARENESS =  $\pm .0625$   
 FRAMING VALUES =  $\pm 1/32"$   
 - ALL VALUES  $\pm$  OVERALL -

CONFIDENTIAL:  
 ALL DESIGN RIGHTS RESERVED  
 THE INFORMATION, DATA, DESIGN, AND DRAWINGS EMBODIED  
 IN THIS DOCUMENT AND ALL REPRODUCTIONS THEREOF ARE  
 THE EXCLUSIVE PROPERTY OF DIVERSIFIED WOODCRAFTS, INC.

THESE DOCUMENTS ARE SUPPLIED WITH THE UNDERSTANDING  
 THAT THEY WILL NOT BE DISCLOSED TO THIRD PARTIES WITHOUT  
 WRITTEN CONSENT OF DIVERSIFIED WOODCRAFTS, INC. ANY  
 REPRODUCTION IN PART OR WHOLE WITHOUT WRITTEN  
 CONSENT IS SUBJECT TO LEGAL ACTION.

DWN BY: EMK DATE DWN: 1/19/15  
 APR BY: DATE APR:  
 APR BY: DATE APR:



300 South Krueger Street  
 Suring, WI 54174  
[diversifiedwoodcrafts.com](http://diversifiedwoodcrafts.com)

TITLE:  
 ART/CAD TABLE  
 ASSEMBLY INSTRUCTIONS

DRAWING NUMBER:

CDTC-60

SCALE:

NTS

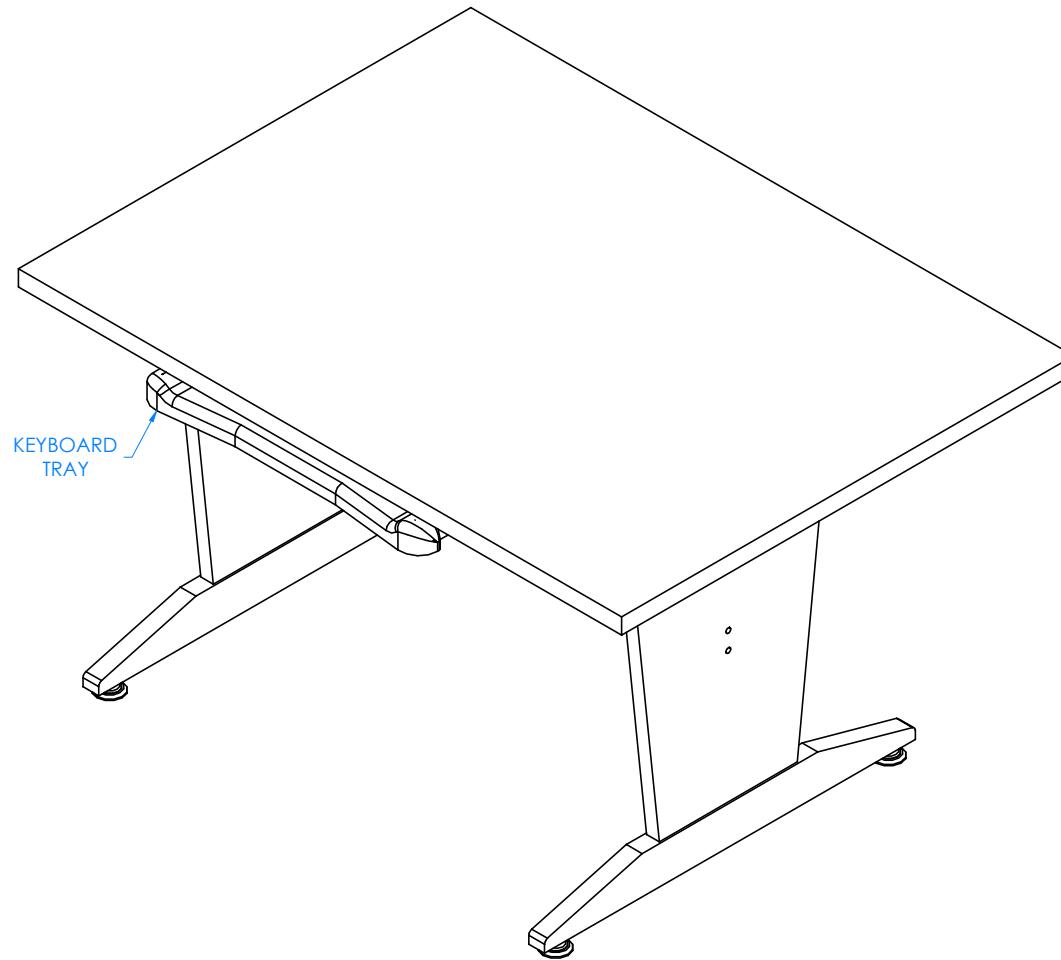
SHEET:

5 OF 7

REVISION:

REV A

A	CREATED ASSEMBLY INSTRUCTIONS	1/19/15	EMK	-
REV.	DESCRIPTION	DATE	NAME	ECN NO.
REVISION LEVEL				



## STEP 4:

- TURN TABLE OVER.
- CENTER KEYBOARD TRAY EVENLY BETWEEN THE LEG ASSEMBLIES.
- ATTACH KEYBOARD TRAY TO TOP WITH HARDWARE PROVIDED.
- THE FRONT OF KEYBOARD TRAY SHOULD ALMOST BE FLUSH WITH SIDE OF TOP.
- IT MAY BE EASIER TO ATTACH KEYBOARD TRAY WHILE TABLE IS ON ITS TOP.
- ATTACH THE MONITOR POST TO TOP USING HARDWARE PROVIDED (NOT SHOWN).

## NOTE:

1.

ALL DIMENSIONS ARE IN INCHES UNLESS NOTED OTHERWISE  
 CABINET SQUARENESS =  $\pm .0625$   
 PRAGMATICAL VALUES =  $\pm 1/32"$   
 - ALL VALUES  $\pm$  OVERALL -

DWN BY:	EMK	DATE DWN:	1/19/15
APR BY:		DATE APR:	
APR BY:		DATE APR:	

CONFIDENTIAL:  
 ALL DESIGN RIGHTS RESERVED  
 THE INFORMATION, DATA, DESIGN, AND DRAWINGS EMBODIED IN THIS DOCUMENT AND ALL REPRODUCTIONS THEREOF ARE THE EXCLUSIVE PROPERTY OF DIVERSIFIED WOODCRAFTS, INC.

THESE DOCUMENTS ARE SUPPLIED WITH THE UNDERSTANDING THAT THEY WILL NOT BE DISCLOSED TO THIRD PARTIES WITHOUT WRITTEN CONSENT OF DIVERSIFIED WOODCRAFTS, INC. ANY REPRODUCTION IN PART OR WHOLE WITHOUT WRITTEN CONSENT IS SUBJECT TO LEGAL ACTION.



300 South Krueger Street  
 Suring, WI 54174  
[diversifiedwoodcrafts.com](http://diversifiedwoodcrafts.com)

TITLE:  
 ART/CAD TABLE  
 ASSEMBLY INSTRUCTIONS

A	CREATED ASSEMBLY INSTRUCTIONS	1/19/15	EMK	-
REV.	DESCRIPTION	DATE	NAME	ECN NO.
REVISION LEVEL				

DRAWING NUMBER:

CDTC-60

SCALE:

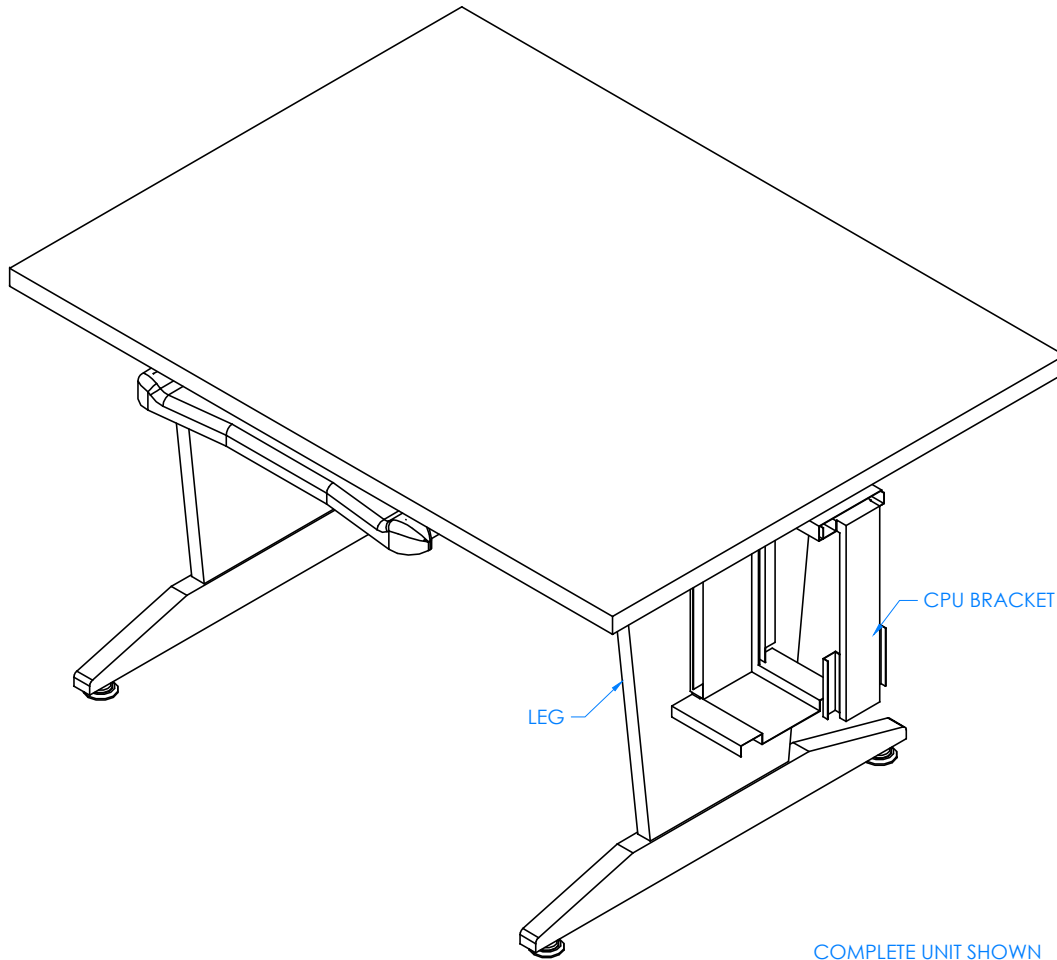
NTS

SHEET:

6 OF 7

REVISION:

REV A



## STEP 5:

- INSTALL CPU BRACKET TO THE SIDE OF LEG USING APPROPRIATE HARDWARE FOR YOUR APPLICATION.
- SET YOUR TABLE IN PLACE.
- ADJUST LEG LEVELERS TO LEVEL TABLE.

## NOTE:

1.

## COMPLETE UNIT SHOWN

ALL DIMENSIONS ARE IN INCHES UNLESS NOTED OTHERWISE  
 CABINET SQUARENESS =  $\pm .0625$   
 PRACTICAL VALUES =  $\pm 1/32"$   
 - ALL VALUES  $\pm$  OVERALL -

DWN BY:	EMK	DATE DWN:	1/19/15
APR BY:		DATE APR:	
APR BY:		DATE APR:	

CONFIDENTIAL:  
 ALL DESIGN RIGHTS RESERVED  
 THE INFORMATION, DATA, DESIGN, AND DRAWINGS EMBODIED IN THIS DOCUMENT AND ALL REPRODUCTIONS THEREOF ARE THE EXCLUSIVE PROPERTY OF DIVERSIFIED WOODCRAFTS, INC.

THESE DOCUMENTS ARE SUPPLIED WITH THE UNDERSTANDING THAT THEY WILL NOT BE DISCLOSED TO THIRD PARTIES WITHOUT WRITTEN CONSENT OF DIVERSIFIED WOODCRAFTS, INC. ANY REPRODUCTION IN PART OR WHOLE WITHOUT WRITTEN CONSENT IS SUBJECT TO LEGAL ACTION.



300 South Krueger Street  
 Suring, WI 54174  
[diversifiedwoodcrafts.com](http://diversifiedwoodcrafts.com)

TITLE:  
 ART/CAD TABLE  
 ASSEMBLY INSTRUCTIONS

A	CREATED ASSEMBLY INSTRUCTIONS	1/19/15	EMK	-
REV.	DESCRIPTION	DATE	NAME	ECN NO.
REVISION LEVEL				

DRAWING NUMBER:

CDTC-60

SCALE:

NTS

SHEET:

7 OF 7

REVISION:

REV A