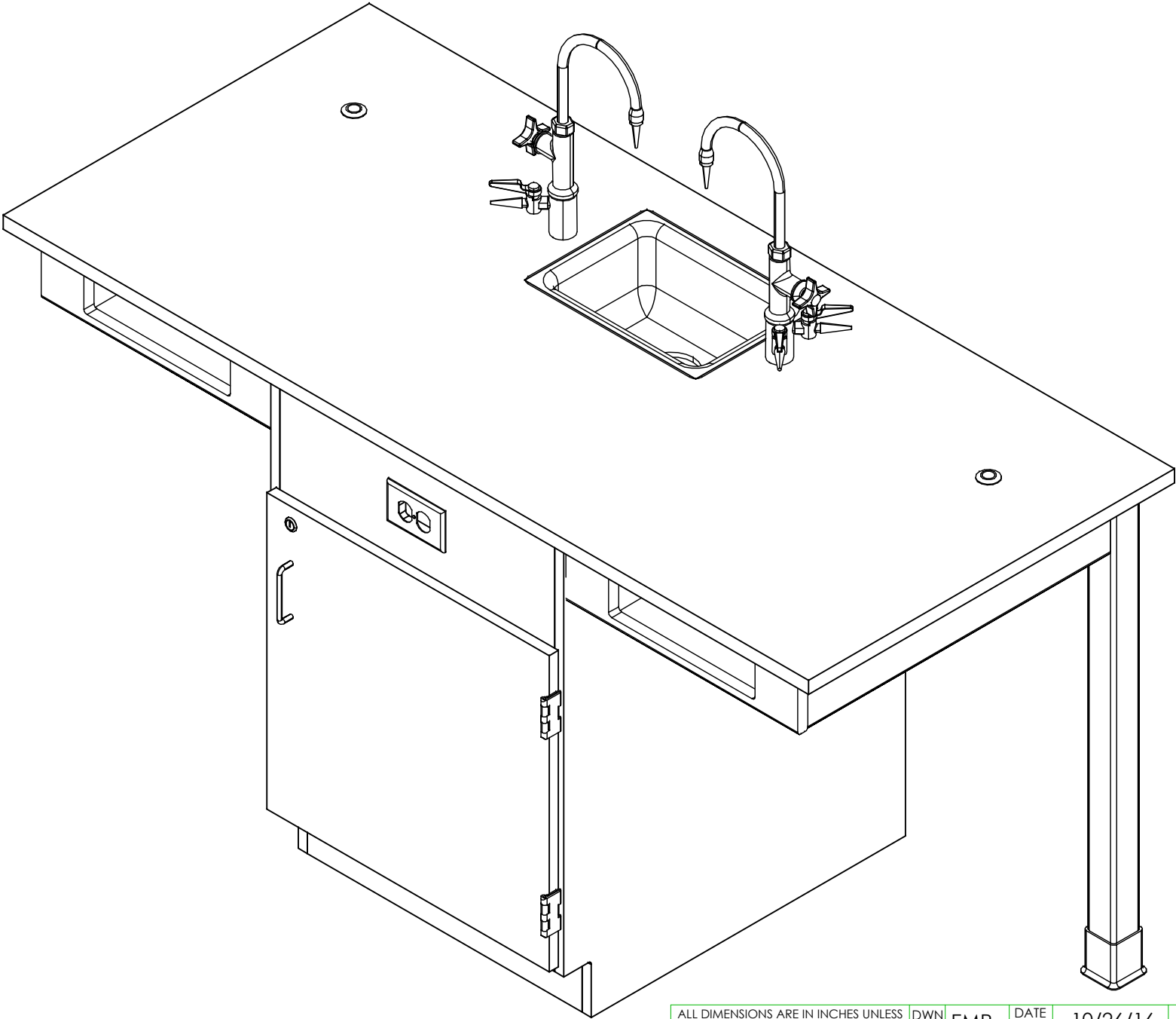


# STUDENT SERVICE ISLAND-SINGLE

C2510, C2510F, C2710, & C2710F SERIES  
ASSEMBLY INSTRUCTIONS




NOTE:

1. MODEL VIEWS MAY NOT REPRESENT EXACT MODEL PURCHASED

C	UPDATED SILICONE PROCEDURE	8/25/23	RJM	-
A	CREATED DRAWING	10/26/16	EMR	-
REV.	DESCRIPTION	DATE	NAME	ECN NO.
REVISION LEVEL				

ALL DIMENSIONS ARE IN INCHES UNLESS NOTED OTHERWISE DECIMALS: .X = ± .030 .XX = ± .020 .XXX = ± .010 ANGLES: = ± 1°0' CABINET SQUARENESS = ± .0625		DWN BY:	EMR	DATE DWN:	10/26/16
		APR BY:		DATE APR:	
		APR BY:		DATE APR:	
		APR BY:		DATE APR:	
CONFIDENTIAL: ALL DESIGN RIGHTS RESERVED THE INFORMATION, DATA, DESIGN, AND DRAWINGS EMBODIED IN THIS DOCUMENT AND ALL REPRODUCTIONS THEREOF ARE THE EXCLUSIVE PROPERTY OF DIVERSIFIED WOODCRAFTS, INC.					
THESE DOCUMENTS ARE SUPPLIED WITH THE UNDERSTANDING THAT THEY WILL NOT BE DISCLOSED TO THIRD PARTIES WITHOUT WRITTEN CONSENT OF DIVERSIFIED WOODCRAFTS, INC. ANY REPRODUCTION IN PART OR WHOLE WITHOUT WRITTEN CONSENT IS SUBJECT TO LEGAL ACTION.					



300 South Krueger Street  
Suring, WI 54174  
diversifiedwoodcrafts.com

TITLE:  
STUDENT SERVICE ISLAND-SINGLE  
ASSEMBLY INSTRUCTIONS

DRAWING NUMBER:	SCALE:	SHEET:	REVISION:
STUDENT SERVICE ISLAND	NTS	1 OF 12	REV C

TOOLS REQUIRED
½" WRENCH
½" SOCKET AND TORQUE WRENCH - OPTIONAL
CONTACT CEMENT
SCREW DRIVER
C-CLAMPS
SHIM STOCK (IF NEEDED)

ASSEMBLY COMPONENTS			
ITEMS INCLUDED	PART #	PART DESCRIPTION	QTY
TOP	VARIES	TOP (STYLE VARIES), 1.00 X 30 X 66	1
CABINET	N/A	24"W X 35"H X 28"D	1
APRON ASSEMBLY	N/A	APRON ASSEMBLY (FACTORY ASSEMBLED)	2
SILICONE	100711	SILICONE,SEALANT,CLEAR	1
LEGS	500101	LEG,OAK 2.25X2.25X34.25	2
LEG HARDWARE	520001	LEG HARDWARE KIT, 1 LEG	2
RUBBER BASE MOLDING	100283	RUBBER BASE MOLDING(SOLD BY FOOT)	8.5
STAINLESS STEEL CORNERS	100057	CORNERS-STAINLESS STEEL,BASE	4
SCREWS - BASE	100064	SCREW,#6X½ PTH SMS SS SCREW	16
ELECTRICAL BOX	100033	ELECTRICAL BOX 3.00X2X2.50 DEEP	1
ELECTRICAL OUTLET	100034	ELEC,OUTLET,GFI,20A 125V,BLK	1
L BRACKET	100355	BRACKET,RAIL 1.25X1.25X4.25	4
SCREWS - L BRACKET	100649	SCREW,#8X¾ PHIL TRUSS HEAD SMS	16
**FIXTURE - FAUCETS**	100074-BKR	FIXTURE,L65-WSA-DIV (MULTI-SERVICE)	2
**FIXTURE - SINK**	100691	SINK,EPOXY L3,BLK	1
**FIXTURE - SINK TRAP**	100056	SINK TRAP,PLATIC ADJUSTABLE	1
**FIXTURE - SINK OUTLET/STRAINER**	254047	SINK OUTLET TAIL PIECE/INTEGRAL STRAINER,BLK	1
**ROD SOCKETS**	206505	ROD SOCKET ASSY,SOCKET,WASHER,NUT	2

NOTE:


1. TOPS ARE EITHER PHENOLIC OR EPOXY.
2. \*\*XX\*\* INDICATES ITEMS USED ONLY FOR UNITS WITH A SINK OR FIXTURES.

C	UPDATED SILICONE PROCEDURE	8/25/23	RJM	-
A	CREATED DRAWING	10/26/16	EMR	-
REV.	DESCRIPTION	DATE	NAME	ECN NO.
REVISION LEVEL				

ALL DIMENSIONS ARE IN INCHES UNLESS NOTED OTHERWISE  
DECIMALS: .X = ± .030  
.XX = ± .020  
.XXX = ± .010  
ANGLES: = ± 1°  
CABINET SQUARENESS = ± .0625

DWN BY: EMR  
APR BY:   
APR BY:

DATE DWN: 10/26/16  
DATE APR:   
DATE APR:

300 South Krueger Street  
Suring, WI 54174  
diversifiedwoodcrafts.com

TITLE:  
STUDENT SERVICE ISLAND-SINGLE TOOLS AND ASSEMBLY COMPONENTS

DRAWING NUMBER:  
STUDENT SERVICE ISLAND

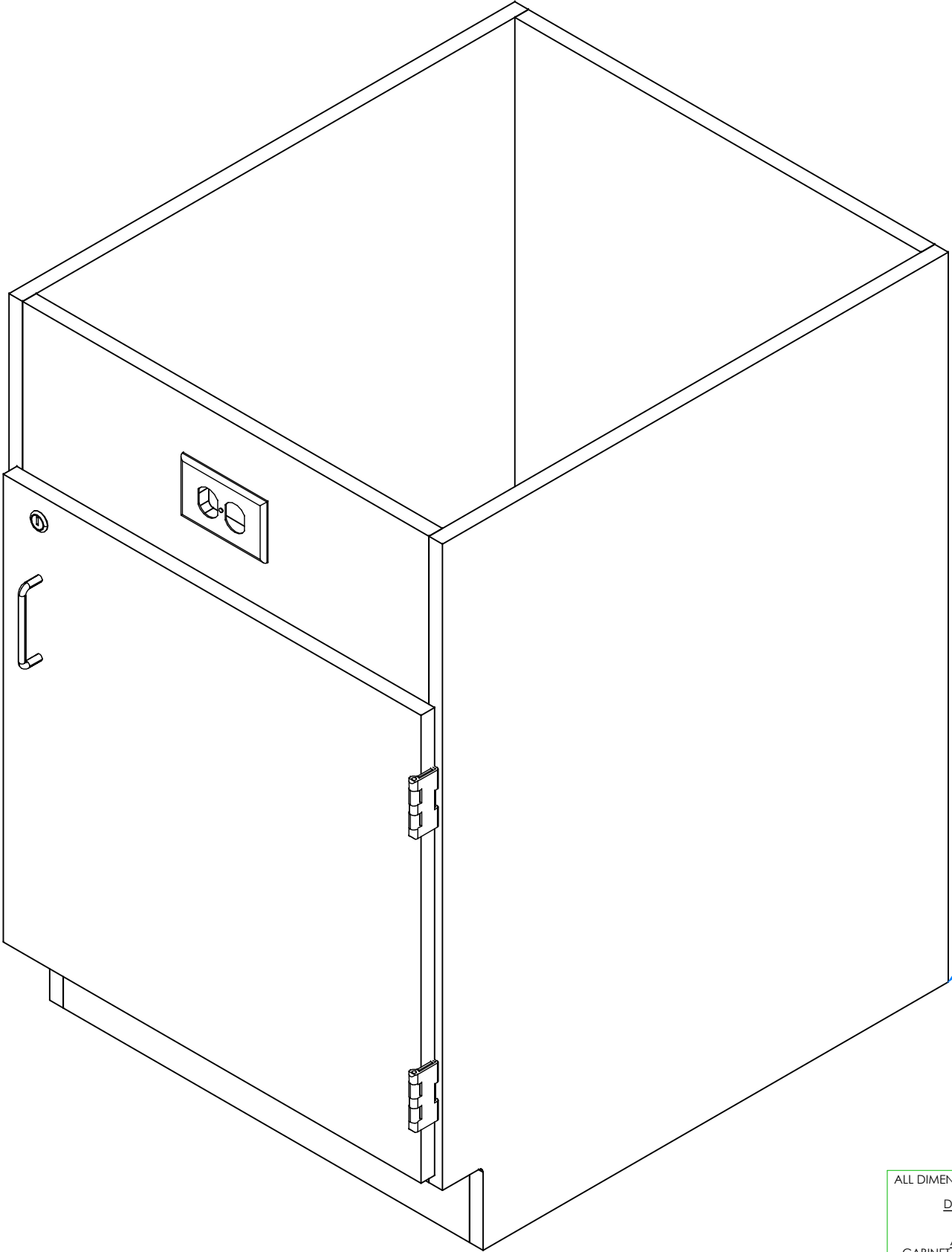
SCALE:  
NTS

SHEET:  
2 OF 12

REVISION:  
REV C

CONFIDENTIAL:  
ALL DESIGN RIGHTS RESERVED  
THE INFORMATION, DATA, DESIGN, AND DRAWINGS EMBODIED IN THIS DOCUMENT AND ALL REPRODUCTIONS THEREOF ARE THE EXCLUSIVE PROPERTY OF DIVERSIFIED WOODCRAFTS, INC.

THESE DOCUMENTS ARE SUPPLIED WITH THE UNDERSTANDING THAT THEY WILL NOT BE DISCLOSED TO THIRD PARTIES WITHOUT WRITTEN CONSENT OF DIVERSIFIED WOODCRAFTS, INC. ANY REPRODUCTION IN PART OR WHOLE WITHOUT WRITTEN CONSENT IS SUBJECT TO LEGAL ACTION.



HARDWARE REQUIRED FOR STEP		
QTY	DESCRIPTION	PART NUMBER
1	CABINET	N/A

STEP 1:

- a. PLACE CABINET IN DESIRED LOCATION.
- b. IF YOU HAVE A UNIT WITH A SINK/FIXTURES, PLACE CABINET OVER UTILITY HOOK-UPS.
- c. LEVEL CABINET.
- d. ATTACH TO FLOOR.

**\*\*NOTE\*\***  
CABINET MUST BE LEVELED OR  
DOORS AND DRAWERS MAY NOT  
OPEN OR CLOSE CORRECTLY

NOTE:  
  
1.

C	UPDATED SILICONE PROCEDURE	8/25/23	RJM	-
A	CREATED DRAWING	10/26/16	EMR	-
REV.	DESCRIPTION	DATE	NAME	ECN NO.
REVISION LEVEL				

ALL DIMENSIONS ARE IN INCHES UNLESS NOTED OTHERWISE DECIMALS: .X = ± .030 .XX = ± .020 .XXX = ± .010 ANGLES: = ± 1°0' CABINET SQUARENESS = ± .0625	DWN BY:	EMR	DATE DWN:	10/26/16
	APR BY:		DATE APR:	
	APR BY:		DATE APR:	
	APR BY:		DATE APR:	
CONFIDENTIAL: ALL DESIGN RIGHTS RESERVED THE INFORMATION, DATA, DESIGN, AND DRAWINGS EMBODIED IN THIS DOCUMENT AND ALL REPRODUCTIONS THEREOF ARE THE EXCLUSIVE PROPERTY OF DIVERSIFIED WOODCRAFTS, INC.				
THESE DOCUMENTS ARE SUPPLIED WITH THE UNDERSTANDING THAT THEY WILL NOT BE DISCLOSED TO THIRD PARTIES WITHOUT WRITTEN CONSENT OF DIVERSIFIED WOODCRAFTS, INC. ANY REPRODUCTION IN PART OR WHOLE WITHOUT WRITTEN CONSENT IS SUBJECT TO LEGAL ACTION.				



300 South Krueger Street  
Suring, WI 54174  
diversifiedwoodcrafts.com

TITLE:  
STUDENT SERVICE ISLAND-SINGLE  
ASSEMBLY INSTRUCTIONS

DRAWING NUMBER:  
STUDENT SERVICE ISLAND

SCALE:  
NTS

SHEET:  
3 OF 12

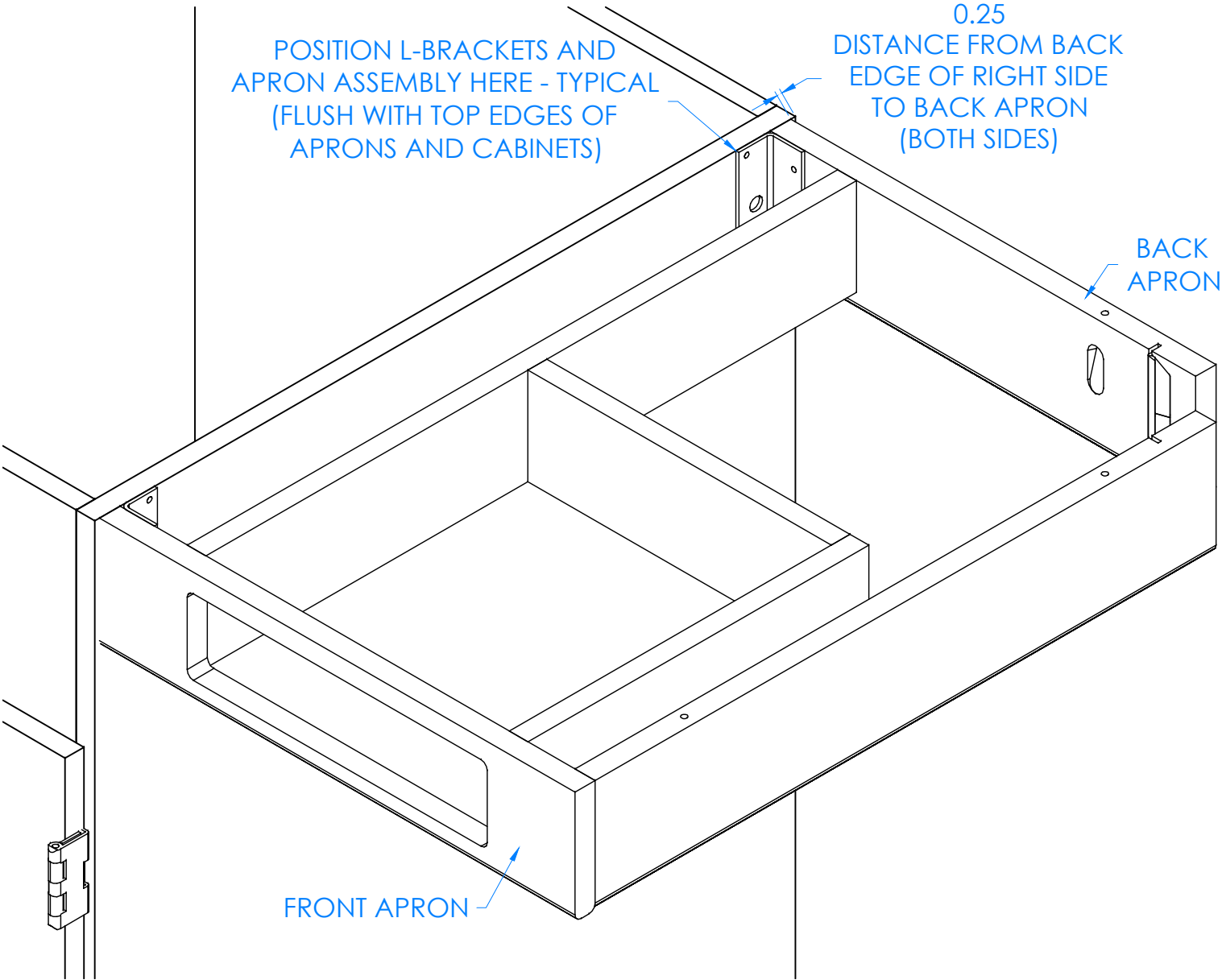
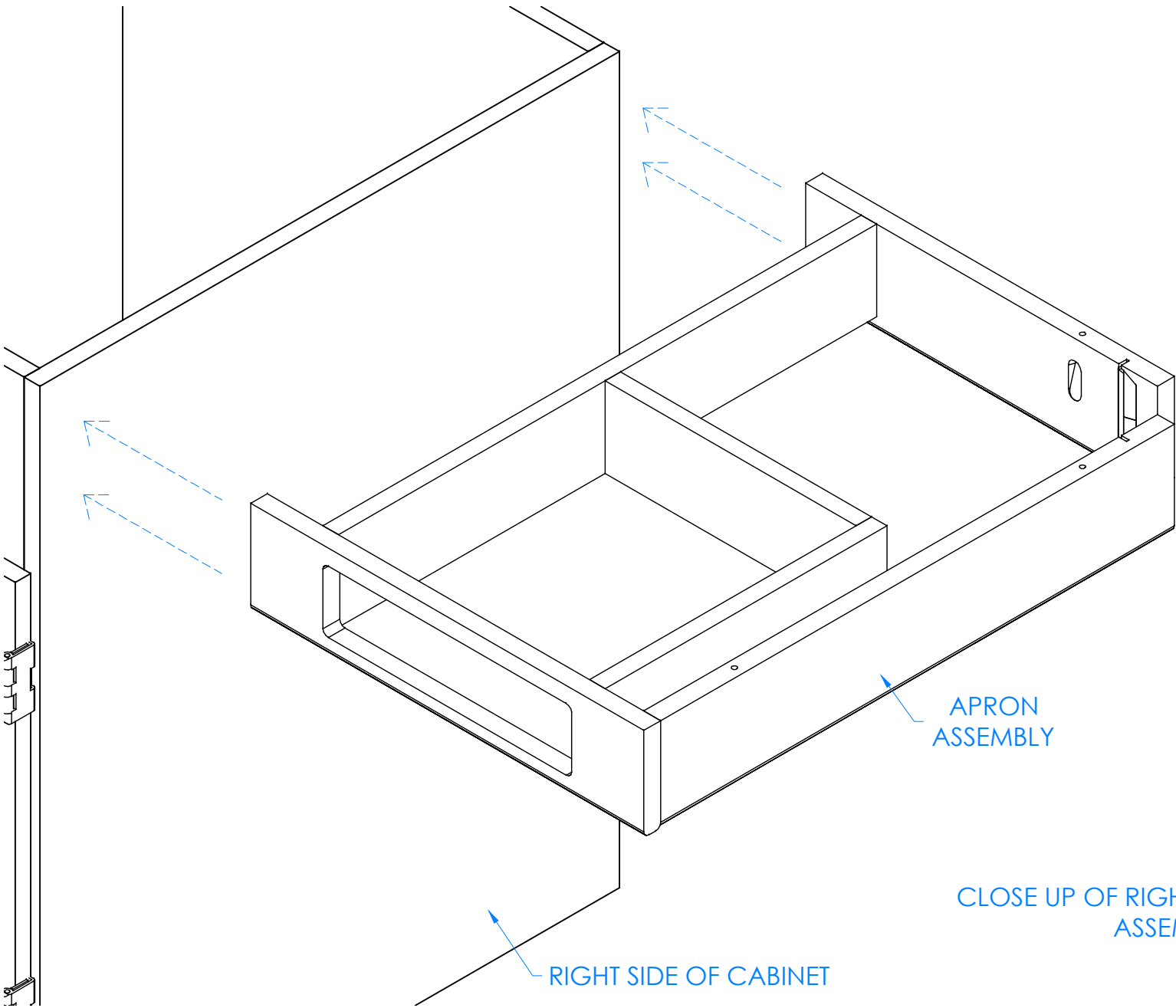
REVISION:  
REV C

STEP 2:

- a. WITH HELP FROM ANOTHER PERSON, POSITION RIGHT APRON ASSEMBLY UP TO RIGHT SIDE OF CABINET SO IT IS CENTERED CORRECTLY AND FLUSH WITH TOP OF BASE CABINET.
- b. PLACE L-BRACKETS IN CORRECT POSITION ON APRON ASSEMBLY AND RIGHT SIDE (SHOULD BE FLUSH WITH TOP EDGE OF FRONT AND BACK APRONS).
- c. MARK ON SIDE OF CABINET WHERE L-BRACKET NEEDS TO BE ATTACHED.
- d. SET APRON ASSEMBLY AND L-BRACKETS ASIDE.
- e. REPEAT ON LEFT SIDE.

HARDWARE REQUIRED FOR STEP

QTY	DESCRIPTION	PART NUMBER
2	APRON ASSEMBLY	N/A
4	L BRACKET	100355



CLOSE UP OF RIGHT SIDE AND RIGHT APRON ASSEMBLY SHOWN

NOTE:

1.

C	UPDATED SILICONE PROCEDURE	8/25/23	RJM	-
A	CREATED DRAWING	10/26/16	EMR	-
REV.	DESCRIPTION	DATE	NAME	ECN NO.
REVISION LEVEL				

ALL DIMENSIONS ARE IN INCHES UNLESS NOTED OTHERWISE  
DECIMALS: .X = ± .030  
.XX = ± .020  
.XXX = ± .010  
ANGLES: = ± 1°  
CABINET SQUARENESS = ± .0625

DWN BY: EMR

APR BY:

APR BY:

DATE DWN: 10/26/16

DATE APR:

DATE APR:

CONFIDENTIAL:  
ALL DESIGN RIGHTS RESERVED  
THE INFORMATION, DATA, DESIGN, AND DRAWINGS EMBODIED IN THIS DOCUMENT AND ALL REPRODUCTIONS THEREOF ARE THE EXCLUSIVE PROPERTY OF DIVERSIFIED WOODCRAFTS, INC.

THESE DOCUMENTS ARE SUPPLIED WITH THE UNDERSTANDING THAT THEY WILL NOT BE DISCLOSED TO THIRD PARTIES WITHOUT WRITTEN CONSENT OF DIVERSIFIED WOODCRAFTS, INC. ANY REPRODUCTION IN PART OR WHOLE WITHOUT WRITTEN CONSENT IS SUBJECT TO LEGAL ACTION.



300 South Krueger Street  
Suring, WI 54174  
diversifiedwoodcrafts.com

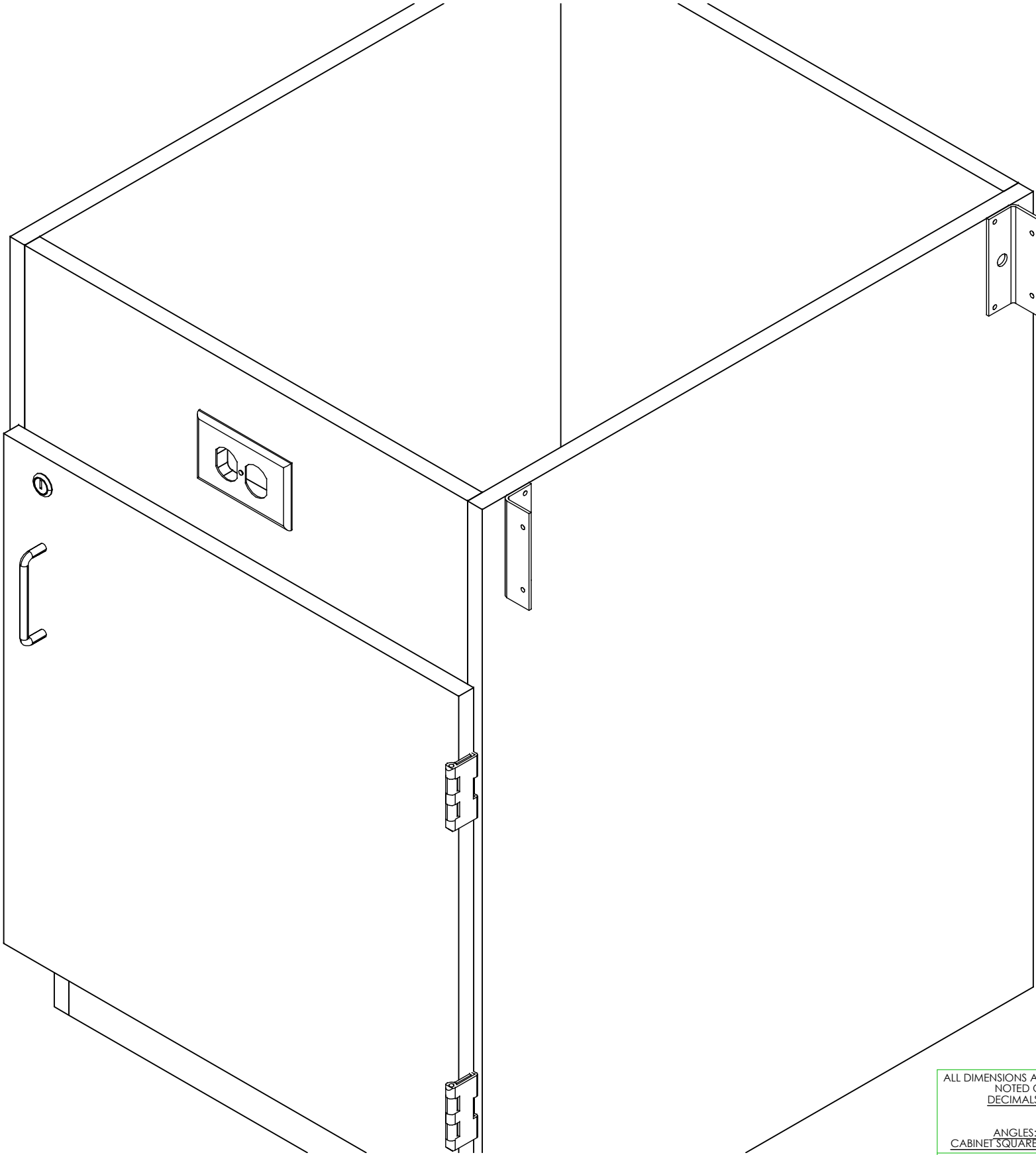
TITLE:  
STUDENT SERVICE ISLAND-SINGLE  
ASSEMBLY INSTRUCTIONS

DRAWING NUMBER:  
STUDENT SERVICE ISLAND

SCALE:  
NTS

SHEET:  
4 OF 12

REVISION:  
REV C



HARDWARE REQUIRED FOR STEP		
QTY	DESCRIPTION	PART NUMBER
4	L BRACKET	100355
8	SCREWS - L BRACKET	100649

- STEP 3:
- a. ATTACH L-BRACKETS TO RIGHT SIDE OF CABINET USING PROVIDED HARDWARE LISTED ABOVE.
  - b. REPEAT FOR LEFT SIDE.

L-BRACKET - TYPICAL

- NOTE:
- 1.

CLOSE UP OF RIGHT SIDE SHOWN

C	UPDATED SILICONE PROCEDURE	8/25/23	RJM	-
A	CREATED DRAWING	10/26/16	EMR	-
REV.	DESCRIPTION	DATE	NAME	ECN NO.
REVISION LEVEL				

ALL DIMENSIONS ARE IN INCHES UNLESS NOTED OTHERWISE DECIMALS: .X = ± .030 .XX = ± .020 .XXX = ± .010 ANGLES: = ± 1°0' CABINET SQUARENESS = ± .0625	DWN BY:	EMR	DATE DWN:	10/26/16
	APR BY:		DATE APR:	
	APR BY:		DATE APR:	
	APR BY:		DATE APR:	
CONFIDENTIAL: ALL DESIGN RIGHTS RESERVED THE INFORMATION, DATA, DESIGN, AND DRAWINGS EMBODIED IN THIS DOCUMENT AND ALL REPRODUCTIONS THEREOF ARE THE EXCLUSIVE PROPERTY OF DIVERSIFIED WOODCRAFTS, INC.				
THESE DOCUMENTS ARE SUPPLIED WITH THE UNDERSTANDING THAT THEY WILL NOT BE DISCLOSED TO THIRD PARTIES WITHOUT WRITTEN CONSENT OF DIVERSIFIED WOODCRAFTS, INC. ANY REPRODUCTION IN PART OR WHOLE WITHOUT WRITTEN CONSENT IS SUBJECT TO LEGAL ACTION.				



300 South Krueger Street  
Suring, WI 54174  
diversifiedwoodcrafts.com

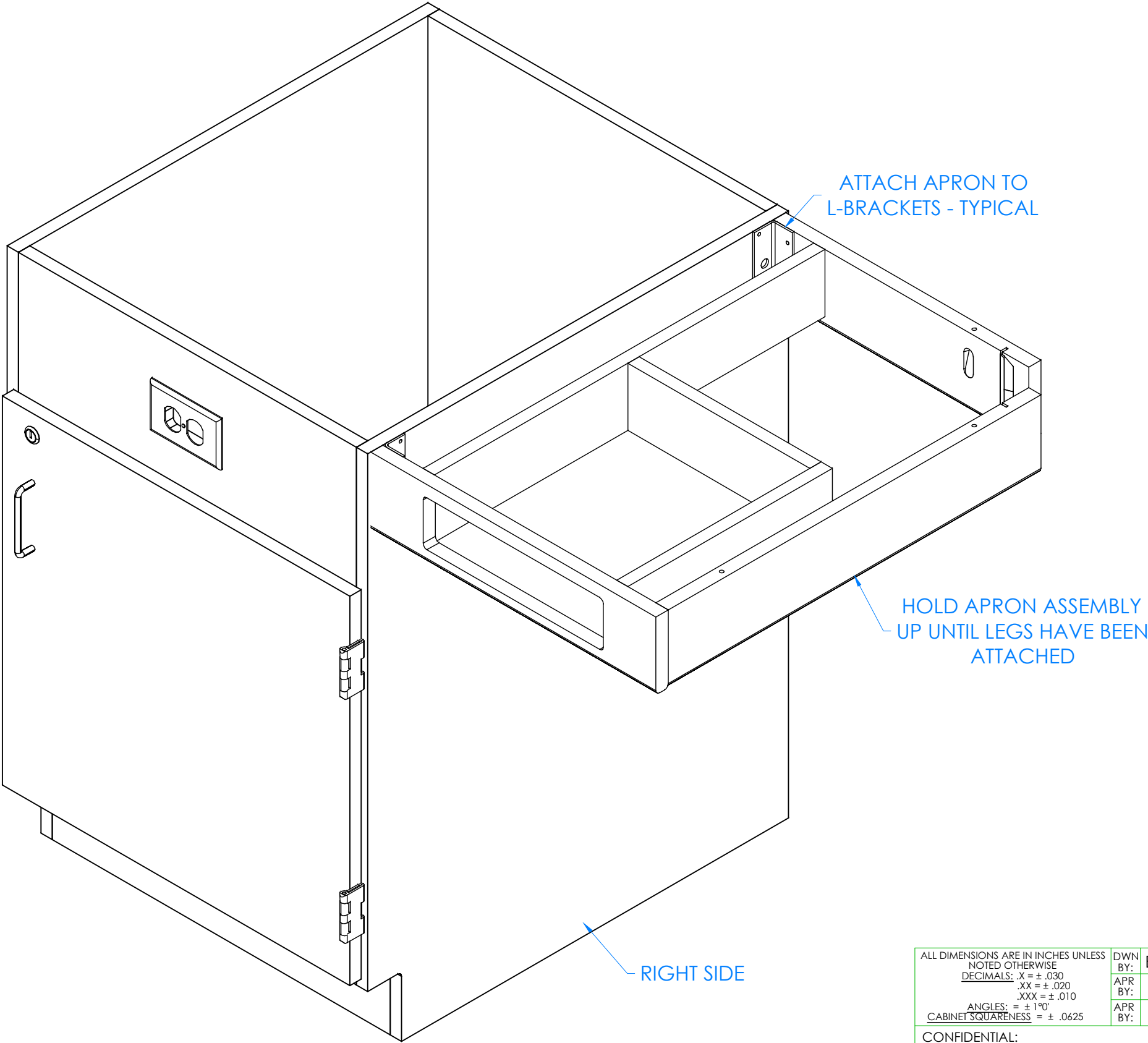
TITLE:  
STUDENT SERVICE ISLAND-SINGLE  
ASSEMBLY INSTRUCTIONS

DRAWING NUMBER:  
STUDENT SERVICE ISLAND

SCALE:  
NTS

SHEET:  
5 OF 12

REVISION:  
REV C



NOTE:  
1.

HARDWARE REQUIRED FOR STEP		
QTY	DESCRIPTION	PART NUMBER
2	APRON ASSEMBLY	N/A
8	SCREWS - L BRACKET	100649

STEP 4:

- a. WITH HELP FROM ANOTHER PERSON, PLACE RIGHT APRON ASSEMBLY UP TO SIDE AND ATTACH TO L-BRACKETS USING PROVIDED HARDWARE LISTED ABOVE.
- b. SUPPORT APRON ASSEMBLY UNTIL LEGS HAVE BEEN ATTACHED, IT IS NOT STRONG ENOUGH TO WITHSTAND WEIGHT UNTIL LEGS AND TOP ARE ATTACHED.
- c. REPEAT ON LEFT SIDE.

C	UPDATED SILICONE PROCEDURE	8/25/23	RJM	-
A	CREATED DRAWING	10/26/16	EMR	-
REV.	DESCRIPTION	DATE	NAME	ECN NO.
REVISION LEVEL				

ALL DIMENSIONS ARE IN INCHES UNLESS NOTED OTHERWISE DECIMALS: .X = ± .030 .XX = ± .020 .XXX = ± .010 ANGLES: = ± 1°0' CABINET SQUARENESS = ± .0625	DWN BY:	EMR	DATE DWN:	10/26/16
	APR BY:		DATE APR:	
	APR BY:		DATE APR:	
	APR BY:		DATE APR:	
CONFIDENTIAL: ALL DESIGN RIGHTS RESERVED THE INFORMATION, DATA, DESIGN, AND DRAWINGS EMBODIED IN THIS DOCUMENT AND ALL REPRODUCTIONS THEREOF ARE THE EXCLUSIVE PROPERTY OF DIVERSIFIED WOODCRAFTS, INC.				
THESE DOCUMENTS ARE SUPPLIED WITH THE UNDERSTANDING THAT THEY WILL NOT BE DISCLOSED TO THIRD PARTIES WITHOUT WRITTEN CONSENT OF DIVERSIFIED WOODCRAFTS, INC. ANY REPRODUCTION IN PART OR WHOLE WITHOUT WRITTEN CONSENT IS SUBJECT TO LEGAL ACTION.				



300 South Krueger Street  
Suring, WI 54174  
diversifiedwoodcrafts.com

TITLE:  
STUDENT SERVICE ISLAND-SINGLE  
ASSEMBLY INSTRUCTIONS

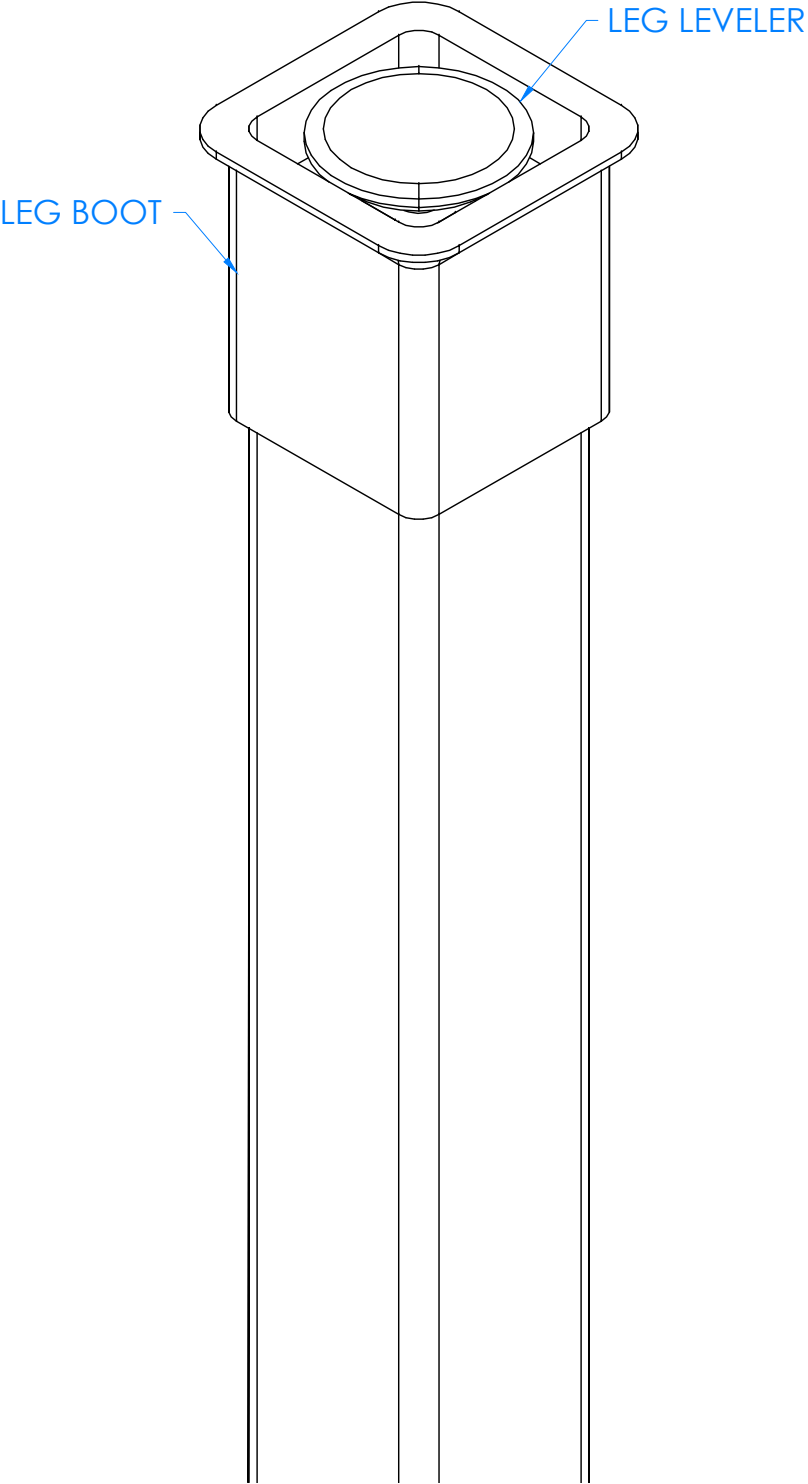
DRAWING NUMBER:  
STUDENT SERVICE ISLAND

SCALE:  
NTS

SHEET:  
6 OF 12

REVISION:  
REV C





Hardware Required for Step		
Qty	Description	Part Number
2	Legs	500101
2	Leg Hardware	520001

STEP 5:

- a. SLIDE LEG BOOTS ONTO LEGS WITH FLARED END TOWARDS BOTTOM OF LEGS.
- b. SCREW LEG LEVELERS INTO T-NUT ON BOTTOM OF LEGS.

CLOSE UP OF LEG LEVELER AND LEG BOOT ASSEMBLY

NOTE:  
  
1.

C	UPDATED SILICONE PROCEDURE	8/25/23	RJM	-
A	CREATED DRAWING	10/26/16	EMR	-
REV.	DESCRIPTION	DATE	NAME	ECN NO.
REVISION LEVEL				

ALL DIMENSIONS ARE IN INCHES UNLESS NOTED OTHERWISE DECIMALS: .X = ± .030 .XX = ± .020 .XXX = ± .010 ANGLES: = ± 1°0' CABINET SQUARENESS = ± .0625	DWN BY:	EMR	DATE DWN:	10/26/16
	APR BY:		DATE APR:	
	APR BY:		DATE APR:	
	APR BY:		DATE APR:	
CONFIDENTIAL: ALL DESIGN RIGHTS RESERVED THE INFORMATION, DATA, DESIGN, AND DRAWINGS EMBODIED IN THIS DOCUMENT AND ALL REPRODUCTIONS THEREOF ARE THE EXCLUSIVE PROPERTY OF DIVERSIFIED WOODCRAFTS, INC.				
THESE DOCUMENTS ARE SUPPLIED WITH THE UNDERSTANDING THAT THEY WILL NOT BE DISCLOSED TO THIRD PARTIES WITHOUT WRITTEN CONSENT OF DIVERSIFIED WOODCRAFTS, INC. ANY REPRODUCTION IN PART OR WHOLE WITHOUT WRITTEN CONSENT IS SUBJECT TO LEGAL ACTION.				



300 South Krueger Street  
Suring, WI 54174  
diversifiedwoodcrafts.com

TITLE:  
STUDENT SERVICE ISLAND-SINGLE  
ASSEMBLY INSTRUCTIONS

DRAWING NUMBER:  
STUDENT SERVICE ISLAND

SCALE:  
NTS

SHEET:  
7 OF 12

REVISION:  
REV C

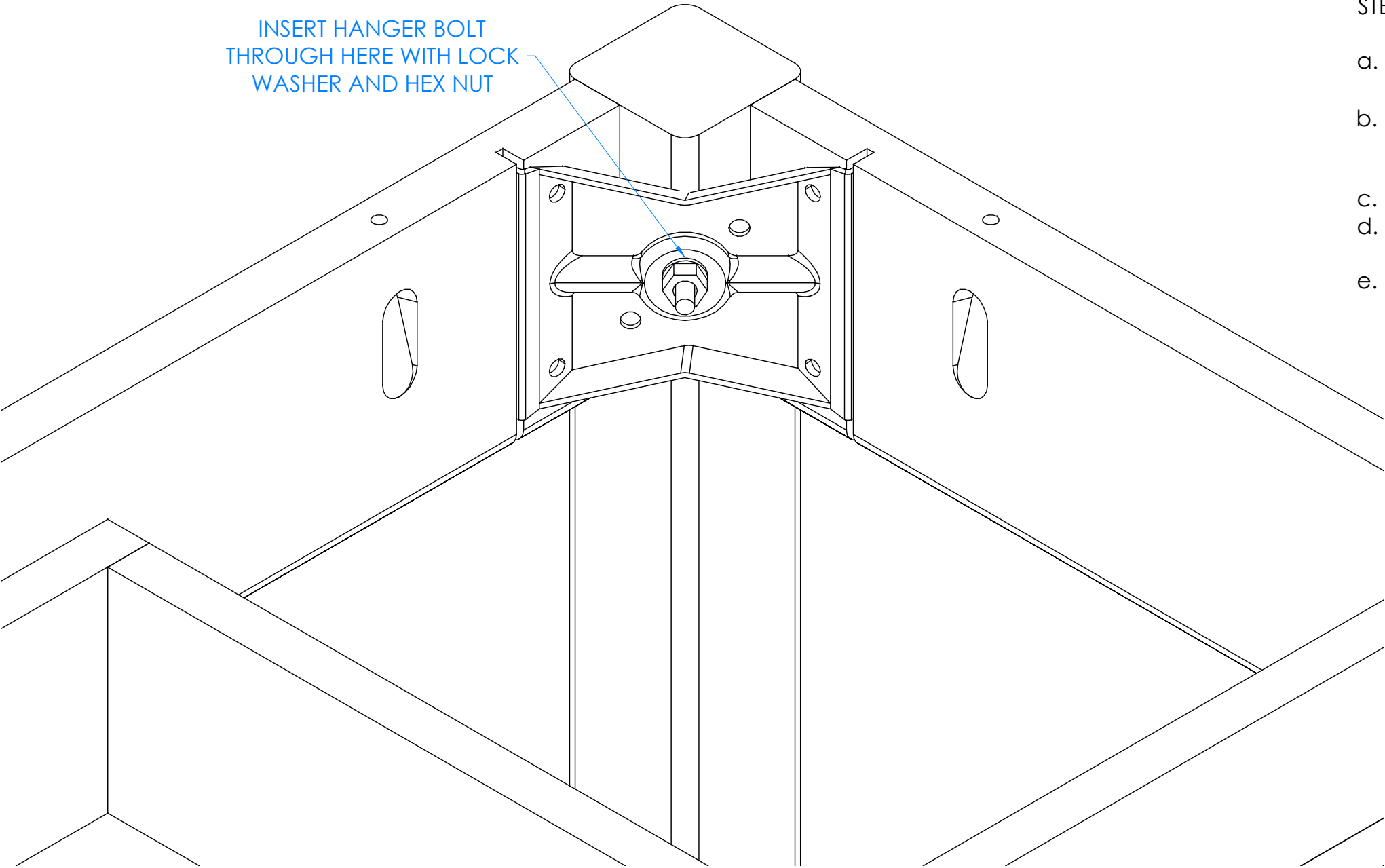
HARDWARE REQUIRED FOR STEP

QTY	DESCRIPTION	PART NUMBER
2	LEG HARDWARE KIT	520001

STEP 6:

- a. INSERT HANGER BOLT ON ONE LEG THROUGH THE CORNER BRACKET AND INSERT LOCK WASHER AND HEX NUT.
- b. TIGHTEN NUT USING A ½" WRENCH OR ½" SOCKET AND TORQUE WRENCH, TO A MINIMUM OF 12FT LBS BUT NOT TO EXCEED 17FT LBS.
- c. REPEAT FOR OTHER LEG.
- d. DO NOT APPLY PRESSURE TO THE APRON ASSEMBLIES AT THIS TIME.
- e. THEY ARE NOT STRONG ENOUGH TO WITHSTAND WEIGHT UNTIL TOP IS ATTACHED.

INSERT HANGER BOLT  
THROUGH HERE WITH LOCK  
WASHER AND HEX NUT



CLOSE UP OF CORNER BRACKET ASSEMBLY

NOTE:

1.

C	UPDATED SILICONE PROCEDURE	8/25/23	RJM	-
A	CREATED DRAWING	10/26/16	EMR	-
REV.	DESCRIPTION	DATE	NAME	ECN NO.
REVISION LEVEL				

ALL DIMENSIONS ARE IN INCHES UNLESS NOTED OTHERWISE DECIMALS: .X = ± .030 .XX = ± .020 .XXX = ± .010 ANGLES: = ± 1° CABINET SQUARENESS = ± .0625	DWN BY:	EMR	DATE DWN:	10/26/16
	APR BY:		DATE APR:	
	APR BY:		DATE APR:	
	APR BY:		DATE APR:	
CONFIDENTIAL: ALL DESIGN RIGHTS RESERVED THE INFORMATION, DATA, DESIGN, AND DRAWINGS EMBODIED IN THIS DOCUMENT AND ALL REPRODUCTIONS THEREOF ARE THE EXCLUSIVE PROPERTY OF DIVERSIFIED WOODCRAFTS, INC.				
THESE DOCUMENTS ARE SUPPLIED WITH THE UNDERSTANDING THAT THEY WILL NOT BE DISCLOSED TO THIRD PARTIES WITHOUT WRITTEN CONSENT OF DIVERSIFIED WOODCRAFTS, INC. ANY REPRODUCTION IN PART OR WHOLE WITHOUT WRITTEN CONSENT IS SUBJECT TO LEGAL ACTION.				



300 South Krueger Street  
Suring, WI 54174  
diversifiedwoodcrafts.com

TITLE:  
STUDENT SERVICE ISLAND-SINGLE  
ASSEMBLY INSTRUCTIONS

DRAWING NUMBER:	SCALE:	SHEET:	REVISION:
STUDENT SERVICE ISLAND	NTS	8 OF 12	REV C

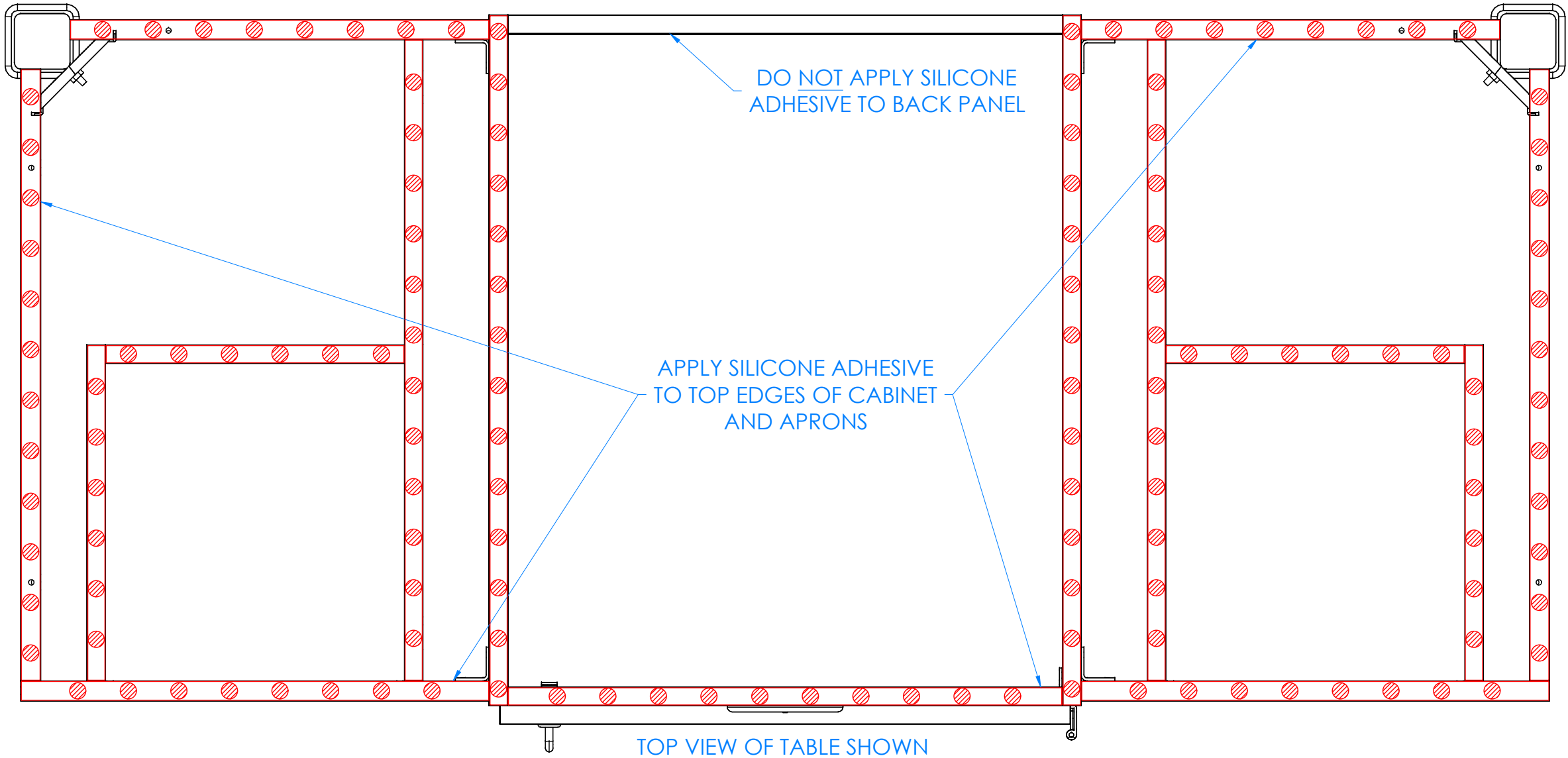


STEP 7:

- a. ADJUST LEG LEVELERS TO LEVEL LEG WITH CABINET.
- b. APPLY SILICONE ADHESIVE TO TOP EDGES OF CABINET AND APRONS.
- c. APPLY SILICONE ADHESIVE IN DOT PATTERN LIKE SHOWN BELOW FOR BEST RESULTS.
- d. PLACE TOP ON UNIT WITH PROPER OVERHANG (2" OVERHANG ON SIDES AND 1.25" ON FRONT AND BACK).
- e. CLAMP ON TOP TO APRONS TO REMOVE ANY WARP USING SHIMS AND C-CLAMPS, IF NEEDED, WHEN ALIGNING THE TOP (DO THIS BEFORE ADHESIVE ON EDGES SETS UP).
- f. LET CURE FOR 6-12 HOURS.
- g. DO NOT APPLY SILICONE ADHESIVE TO BACK PANEL.

HARDWARE REQUIRED FOR STEP

QTY	DESCRIPTION	PART NUMBER
1	TOP	VARIES
1	SILICONE	100711



NOTE:

1.

C	UPDATED SILICONE PROCEDURE	8/25/23	RJM	-
A	CREATED DRAWING	10/26/16	EMR	-
REV.	DESCRIPTION	DATE	NAME	ECN NO.
REVISION LEVEL				

ALL DIMENSIONS ARE IN INCHES UNLESS NOTED OTHERWISE		DWN BY:	EMR	DATE DWN:	10/26/16
DECIMALS: .X = ± .030		APR BY:		DATE APR:	
.XX = ± .020		APR BY:		DATE APR:	
.XXX = ± .010		APR BY:		DATE APR:	
ANGLES: = ± 1°0'		APR BY:		DATE APR:	
CABINET SQUARENESS = ± .0625		APR BY:		DATE APR:	
CONFIDENTIAL: ALL DESIGN RIGHTS RESERVED. THE INFORMATION, DATA, DESIGN, AND DRAWINGS EMBODIED IN THIS DOCUMENT AND ALL REPRODUCTIONS THEREOF ARE THE EXCLUSIVE PROPERTY OF DIVERSIFIED WOODCRAFTS, INC.					
THESE DOCUMENTS ARE SUPPLIED WITH THE UNDERSTANDING THAT THEY WILL NOT BE DISCLOSED TO THIRD PARTIES WITHOUT WRITTEN CONSENT OF DIVERSIFIED WOODCRAFTS, INC. ANY REPRODUCTION IN PART OR WHOLE WITHOUT WRITTEN CONSENT IS SUBJECT TO LEGAL ACTION.					



300 South Krueger Street  
Suring, WI 54174  
diversifiedwoodcrafts.com

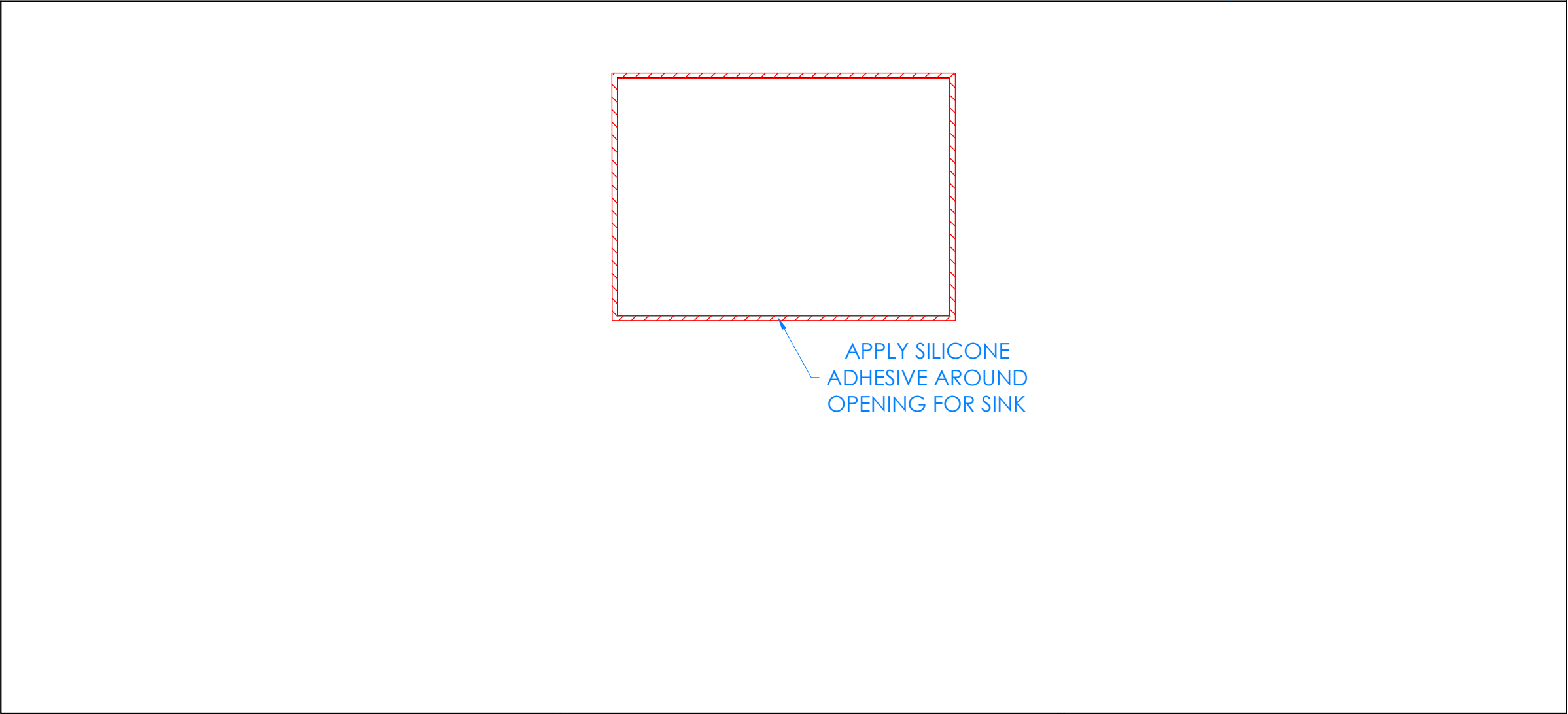
TITLE:  
STUDENT SERVICE ISLAND-SINGLE  
ASSEMBLY INSTRUCTIONS

DRAWING NUMBER:	SCALE:	SHEET:	REVISION:
STUDENT SERVICE ISLAND	NTS	9 OF 12	REV C

STEP 8:

- a. IF YOU DO NOT HAVE A UNIT WITH A SINK, SKIP TO STEP 9.
- b. APPLY SILICONE ADHESIVE TO SINK OPENING ON TOP.
- c. LOWER SINK INTO OPENING.
- d. WIPE OFF ANY EXCESS CAULK AND ALLOW TO SET.
- e. LET CURE FOR 6-12 HOURS.

HARDWARE REQUIRED FOR STEP		
QTY	DESCRIPTION	PART NUMBER
1	FIXTURE - SINK	100691
1	SILICONE	100711



TOP VIEW OF TABLE SHOWN

NOTE:  
1.

C	UPDATED SILICONE PROCEDURE	8/25/23	RJM	-
A	CREATED DRAWING	10/26/16	EMR	-
REV.	DESCRIPTION	DATE	NAME	ECN NO.
REVISION LEVEL				

ALL DIMENSIONS ARE IN INCHES UNLESS NOTED OTHERWISE

DECIMALS: .X = ± .030  
.XX = ± .020  
.XXX = ± .010

ANGLES: = ± 1°0'

CABINET SQUARENESS = ± .0625

DWN BY: EMR

APR BY:

APR BY:


DATE DWN: 10/26/16

DATE APR:

DATE APR:

CONFIDENTIAL:  
ALL DESIGN RIGHTS RESERVED  
THE INFORMATION, DATA, DESIGN, AND DRAWINGS EMBODIED IN THIS DOCUMENT AND ALL REPRODUCTIONS THEREOF ARE THE EXCLUSIVE PROPERTY OF DIVERSIFIED WOODCRAFTS, INC.

THESE DOCUMENTS ARE SUPPLIED WITH THE UNDERSTANDING THAT THEY WILL NOT BE DISCLOSED TO THIRD PARTIES WITHOUT WRITTEN CONSENT OF DIVERSIFIED WOODCRAFTS, INC. ANY REPRODUCTION IN PART OR WHOLE WITHOUT WRITTEN CONSENT IS SUBJECT TO LEGAL ACTION.



300 South Krueger Street  
Suring, WI 54174  
diversifiedwoodcrafts.com

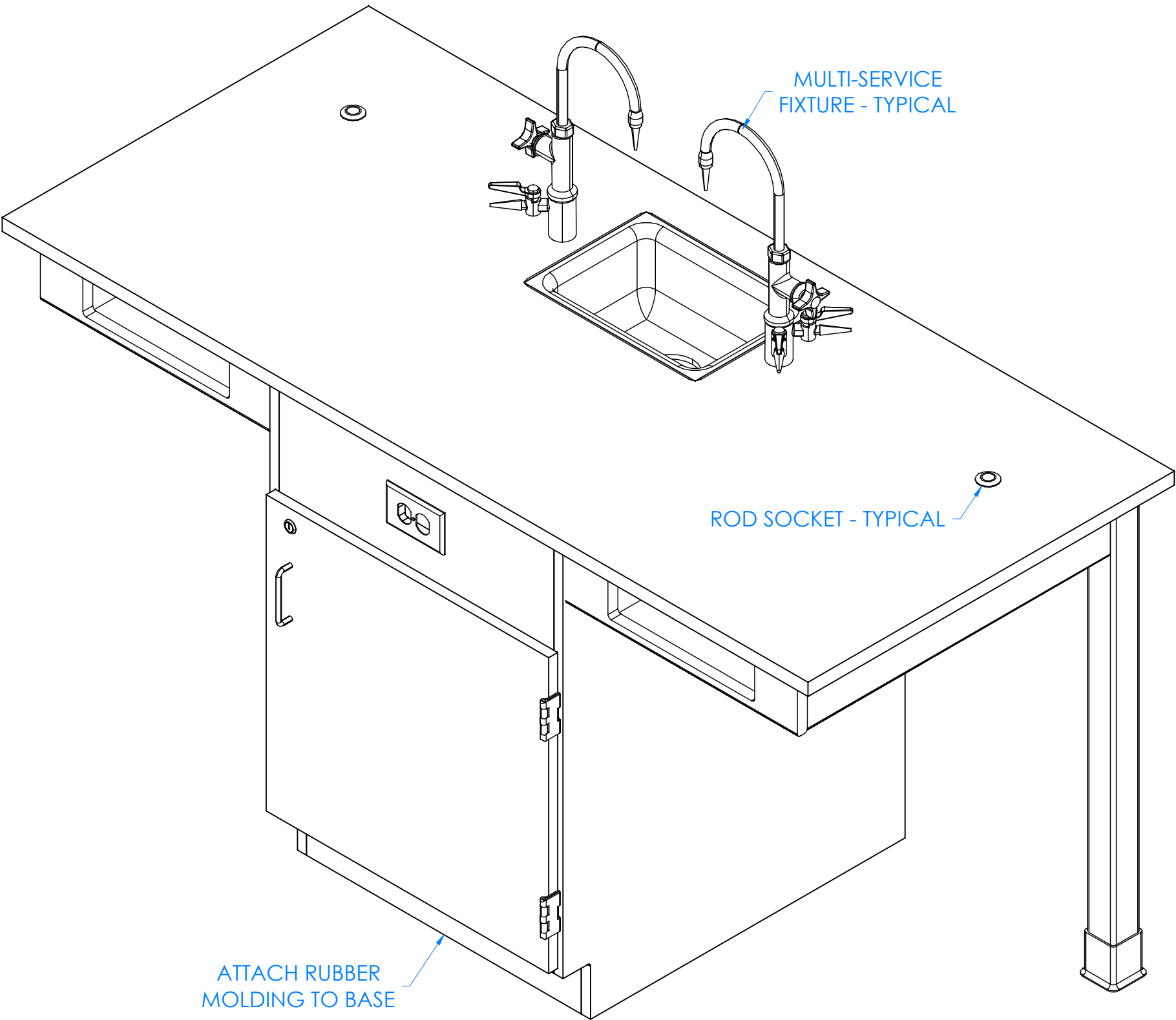
TITLE:  
STUDENT SERVICE ISLAND-SINGLE  
ASSEMBLY INSTRUCTIONS

DRAWING NUMBER:  
STUDENT SERVICE ISLAND

SCALE:  
NTS

SHEET:  
10 OF 12

REVISION:  
REV C



HARDWARE REQUIRED FOR STEP		
QTY	DESCRIPTION	PART NUMBER
2	FIXTURE - FAUCETS	100074-BKR
1	FIXTURE - SINK TRAP	100056
1	FIXTURE - SINK OUTLET/STRAINER	254047
2	ROD SOCKETS	206505
8.5	RUBBER BASE MOLDING	100283
4	STAINLESS STEEL CORNERS	100057
16	SCREWS - BASE	100064

STEP 9:

- a. ATTACH RUBBER MOLDING TO BASE OF CABINET USING CONTACT CEMENT.
- b. SCREW STAINLESS STEEL CORNER BRACKETS ON EACH CORNER OVER BASE MOLDING USING PROVIDED HARDWARE LISTED ABOVE.
- c. IF YOU HAVE A UNIT WITH FIXTURES, INSTALL MULTI-SERVICE FIXTURES IN HOLES PROVIDED ON TOP.
- d. INSERT ROD SOCKETS INTO PRE-DRILLED HOLES IN TOP.

NOTE:

- 1. ALL WATER, ELECTRICAL, AND GAS CONNECTIONS SHOULD BE PERFORMED BY A TRAINED PROFESSIONAL PER LOCAL CODE.

C	UPDATED SILICONE PROCEDURE	8/25/23	RJM	-
A	CREATED DRAWING	10/26/16	EMR	-
REV.	DESCRIPTION	DATE	NAME	ECN NO.
REVISION LEVEL				

ALL DIMENSIONS ARE IN INCHES UNLESS NOTED OTHERWISE DECIMALS: .X = ± .030 .XX = ± .020 .XXX = ± .010 ANGLES: = ± 1°0' CABINET SQUARENESS = ± .0625	DWN BY:	EMR	DATE DWN:	10/26/16
	APR BY:		DATE APR:	
	APR BY:		DATE APR:	
	APR BY:		DATE APR:	
CONFIDENTIAL: ALL DESIGN RIGHTS RESERVED THE INFORMATION, DATA, DESIGN, AND DRAWINGS EMBODIED IN THIS DOCUMENT AND ALL REPRODUCTIONS THEREOF ARE THE EXCLUSIVE PROPERTY OF DIVERSIFIED WOODCRAFTS, INC.				
THESE DOCUMENTS ARE SUPPLIED WITH THE UNDERSTANDING THAT THEY WILL NOT BE DISCLOSED TO THIRD PARTIES WITHOUT WRITTEN CONSENT OF DIVERSIFIED WOODCRAFTS, INC. ANY REPRODUCTION IN PART OR WHOLE WITHOUT WRITTEN CONSENT IS SUBJECT TO LEGAL ACTION.				



300 South Krueger Street  
Suring, WI 54174  
diversifiedwoodcrafts.com

TITLE:  
STUDENT SERVICE ISLAND-SINGLE  
ASSEMBLY INSTRUCTIONS

DRAWING NUMBER:  
STUDENT SERVICE ISLAND

SCALE:  
NTS

SHEET:  
11 OF 12

REVISION:  
REV C

## **TROUBLESHOOTING YOUR GFCI ELECTRICAL RECEPTACLE:**

**PLEASE NOTE: THROUGHOUT ANY OF THE FOLLOWING STEPS (PROCEDURES); IF YOU ARE NOT SURE YOU CAN DO THIS JOB SAFELY, AND COMPETENTLY, REFER THIS WORK TO QUALIFIED PROFESSIONAL!**

**If your unit comes equipped with a GFCI (Ground Fault Circuit Interrupter) electrical receptacle, and there is no power in the receptacle please consider/check the following:**

- The extension cord (if being used) is working properly.
- The breaker hasn't been tripped, or turned off.

This type of GFCI has two testing-related buttons on it. One button is appropriately labeled "TEST", and the other button is labeled "RESET". To test the GFCI receptacle follow these steps:

- Plug in an appliance (lamp or night light) into the outlet. The light should now be on. Then press the "TEST" button on the GFCI. The GFCI "RESET" button should pop out, and the light should go out.
- If the "RESET" button pops out, but the light doesn't go out, the GFCI has been improperly wired. In this case please contact a certified professional. There may also be a problem with other wiring in the same circuit.
- If the "RESET" button doesn't pop out, the GFCI is defective, or malfunctioned, and should be replaced.
- If the GFCI is functioning properly, and the lamp goes out, press the "RESET" button to restore power to the outlet.

Conversely, if you have a GFI that has tripped (which is common) and it will not reset, you may have a wiring short in the circuit, a defective appliance on the circuit, or the GFI itself has become defective. To test a tripping GFCI follow these steps:

- Remove every appliance connected to the GFCI's circuit and reset it. If it doesn't reset there may either be a wiring fault behind a socket outlet, or your GFCI itself has become faulty.
- Make sure whatever you are plugging into the GFCI is dry and not damaged.
- Only plug in one item at a time. If you are plugging in a defective item it will cause the GFCI to trip, and that item therefore should be replaced.

If you are still having difficulty the easiest way to troubleshoot a GFI is to obtain a GFI tester, which is available at most hardware stores. It plugs into the GFI outlet, and will supply you with a "snapshot" of your connections, indicating wiring problems and/or the condition of the GFI. Another way to troubleshoot is to simply purchase a new GFI and install it.