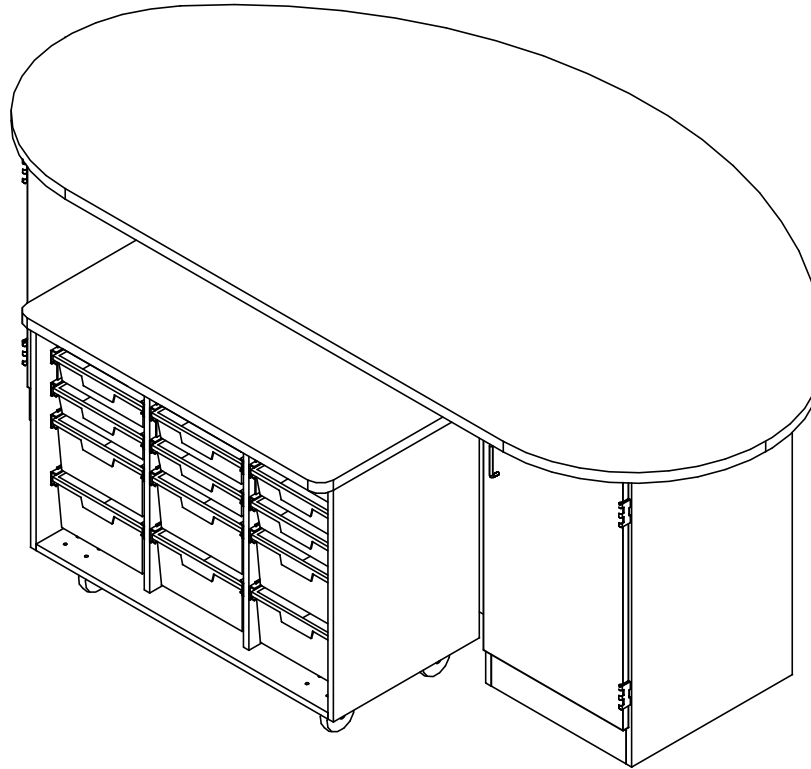


AXIS EVOLVE

AE80130, AE80134, & AE80136 SERIES (OAK OR MAPLE)
ASSEMBLY INSTRUCTIONS



NOTE:

1. MODEL VIEWS MAY NOT REPRESENT EXACT MODEL PURCHASED

ALL DIMENSIONS ARE IN INCHES UNLESS NOTED OTHERWISE			
DECIMALS:	X = ± .030	DWN BY:	EMR
	XX = ± .020	DATE DWN:	9/1/21
	XXX = ± .010	APR BY:	
ANGLES:	= ± 1°	DATE APR:	
CABINET SQUARENESS:	= ± .0625	APR BY:	

CONFIDENTIAL:
ALL DESIGN RIGHTS RESERVED
THE INFORMATION, DATA, DESIGN, AND DRAWINGS EMBODIED IN THIS DOCUMENT AND ALL REPRODUCTIONS THEREOF ARE THE EXCLUSIVE PROPERTY OF DIVERSIFIED WOODCRAFTS, INC.

THESE DOCUMENTS ARE SUPPLIED WITH THE UNDERSTANDING THAT THEY WILL NOT BE DISCLOSED TO THIRD PARTIES WITHOUT WRITTEN CONSENT OF DIVERSIFIED WOODCRAFTS, INC. ANY REPRODUCTION IN PART OR WHOLE WITHOUT WRITTEN CONSENT IS SUBJECT TO LEGAL ACTION.



300 South Krueger Street
Suring, WI 54174
diversifiedwoodcrafts.com

TITLE:
AXIS EVOLVE - ROBOTICS WORKSTATION
ASSEMBLY INSTRUCTIONS

A	CREATED DRAWING	9/1/21	EMR	N/A
REV.	DESCRIPTION	DATE	NAME	ECN No.
REVISION LEVEL				

DRAWING NUMBER:	SCALE:	SHEET:	REVISION:
AE80130, AE80134, & AE80136	NTS	1 OF 8	REV A

TOOLS REQUIRED

CONTACT CEMENT

DRILL

ASSEMBLY COMPONENTS

ITEMS INCLUDED	PART #	PART DESCRIPTION	QTY
CABINET	N/A	B01 - 42.50"W x 22"D x (HEIGHT VARIES)	1
CABINET	N/A	B95 - 20.00"W x 22"D x (HEIGHT VARIES)	1
CABINET	N/A	B96 - 20.00"W x 22"D x (HEIGHT VARIES)	1
TOP	VARIES	TOP,(STYLE VARIES), 1.25X50X96,AXIS,BLK,FLAT	1
SCREWS - TOP	100597	SCREW,#8X1.5 QUAD ROUND WASHER	VARIES
CONNECTING BOLT	257282	BOLT,1/4-20X35MM,CONNECTOR BOLT	4
CONNECTING NUT	234337-JCN	JOINT CONNECTING NUT,1/4-20X17MM	4
RUBBER BASE	100283	RUBBER BASE MOLDING (SOLD BY FOOT)	20
STAINLESS STEEL CORNERS	100057	CORNERS-STAINLESS STEEL,BASE	12
SCREWS - BASE	100064	SCREW,#6X½ PTH SMS SS SCREW	48
SHELF CLIPS	100027	SHELF CLIPS,PLASTIC,5MM PIN	16

NOTE:

1. COMPONENTS VARY WITH STYLE OF WORKSTATION PURCHASED.
 - 1.1. TOP SELECTIONS:
 - 1.1.1. PLASTIC LAMINATE OR CHEMGUARD.
 - 1.2. HEIGHT SELECTIONS:
 - 1.2.1. 30"H, 34"H, OR 36"H.

A	CREATED DRAWING	9/1/21	EMR	N/A
REV.	DESCRIPTION	DATE	NAME	ECN No.
	REVISION LEVEL			

ALL DIMENSIONS ARE IN INCHES UNLESS NOTED OTHERWISE	DWN BY:	EMR	DATE DWN:	9/1/21
DECIMALS: X = ± .030	APR BY:		DATE APR:	
XX = ± .020	APR BY:		DATE APR:	
XXX = ± .010	APR BY:		DATE APR:	
ANGLES: = ± 1°	APR BY:		DATE APR:	
CABINET SQUARENESS: = ± .0625	APR BY:		DATE APR:	

CONFIDENTIAL:
ALL DESIGN RIGHTS RESERVED
THE INFORMATION, DATA, DESIGN, AND DRAWINGS EMBODIED
IN THIS DOCUMENT AND ALL REPRODUCTIONS THEREOF ARE
THE EXCLUSIVE PROPERTY OF DIVERSIFIED WOODCRAFTS, INC.

THESE DOCUMENTS ARE SUPPLIED WITH THE UNDERSTANDING
THAT THEY WILL NOT BE DISCLOSED TO THIRD PARTIES WITHOUT
WRITTEN CONSENT OF DIVERSIFIED WOODCRAFTS, INC. ANY
REPRODUCTION IN PART OR WHOLE WITHOUT WRITTEN
CONSENT IS SUBJECT TO LEGAL ACTION.

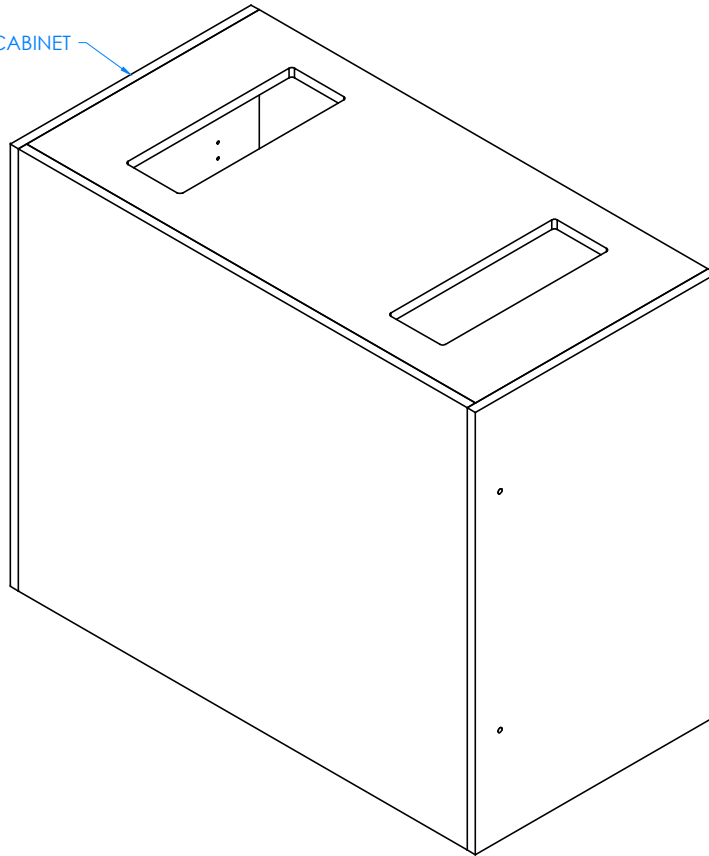


300 South Krueger Street
Suring, WI 54174
diversifiedwoodcrafts.com

TITLE:
AXIS EVOLVE - ROBOTICS WORKSTATION
TOOLS AND ASSEMBLY COMPONENTS

DRAWING NUMBER:	SCALE:	SHEET:	REVISION:
AE80130, AE80134, & AE80136	NTS	2 OF 8	REV A

B01 - OPEN CABINET



STEP 1:

- POSITION OPEN CABINET IN YOUR DESIRED LOCATION.
- LEVEL CABINET.
- ANCHOR TO FLOOR.

****NOTE****
CABINET MUST BE LEVELED OR
DOORS AND DRAWERS MAY NOT
OPEN OR CLOSE CORRECTLY

NOTE:

1.

ALL DIMENSIONS ARE IN INCHES UNLESS NOTED OTHERWISE	DWN BY:	EMR	DATE DWN:	9/1/21
DECIMALS: X = ± .030	APR BY:		DATE APR:	
XX = ± .020	APR BY:		DATE APR:	
XXX = ± .010	APR BY:		DATE APR:	
ANGLES: = ± 1°	APR BY:		DATE APR:	
CABINET SQUARENESS: = ± .0625	APR BY:		DATE APR:	

CONFIDENTIAL:
ALL DESIGN RIGHTS RESERVED
THE INFORMATION, DATA, DESIGN, AND DRAWINGS EMBODIED
IN THIS DOCUMENT AND ALL REPRODUCTIONS THEREOF ARE
THE EXCLUSIVE PROPERTY OF DIVERSIFIED WOODCRAFTS, INC.

THESE DOCUMENTS ARE SUPPLIED WITH THE UNDERSTANDING
THAT THEY WILL NOT BE DISCLOSED TO THIRD PARTIES WITHOUT
WRITTEN CONSENT OF DIVERSIFIED WOODCRAFTS, INC. ANY
REPRODUCTION IN PART OR WHOLE WITHOUT WRITTEN
CONSENT IS SUBJECT TO LEGAL ACTION.



300 South Krueger Street
Suring, WI 54174
diversifiedwoodcrafts.com

TITLE:
AXIS EVOLVE - ROBOTICS WORKSTATION
ASSEMBLY INSTRUCTIONS

A	CREATED DRAWING	9/1/21	EMR	N/A
REV.	DESCRIPTION	DATE	NAME	ECN No.
	REVISION LEVEL			

DRAWING NUMBER:	SCALE:	SHEET:	REVISION:
AE80130, AE80134, & AE80136	NTS	3 OF 8	REV A

B96 - HINGED
LEFT CABINET

8.00
TYP

FRONT OF OPEN
CABINET

BACK OF OPEN
CABINET

B95 - HINGED
RIGHT CABINET

STEP 2:

- PLACE THE TWO DOOR CABINETS TIGHT AGAINST THE OPEN CABINET.
- DOOR CABINETS SHOULD BE PLACED 8" BACK FROM THE FRONT EDGE OF OPEN CABINET.
- MAKE SURE HINGE SIDE OF DOOR CABINETS ARE FACING OUTWARD.
- LEVEL DOOR CABINETS.
- ANCHOR TO FLOOR.

****NOTE****
CABINET MUST BE LEVELED OR
DOORS AND DRAWERS MAY NOT
OPEN OR CLOSE CORRECTLY

NOTE:

1.

ALL DIMENSIONS ARE IN INCHES UNLESS
NOTED OTHERWISE
DECIMALS: X = ± .030
XX = ± .020
XXX = ± .010
ANGLES: = ± 1°
CABINET SQUARENESS: = ± .0625

DWN BY:	EMR	DATE DWN:	9/1/21
APR BY:		DATE APR:	
APR BY:		DATE APR:	

CONFIDENTIAL:
ALL DESIGN RIGHTS RESERVED
THE INFORMATION, DATA, DESIGN, AND DRAWINGS EMBODIED
IN THIS DOCUMENT AND ALL REPRODUCTIONS THEREOF ARE
THE EXCLUSIVE PROPERTY OF DIVERSIFIED WOODCRAFTS, INC.

THESE DOCUMENTS ARE SUPPLIED WITH THE UNDERSTANDING
THAT THEY WILL NOT BE DISCLOSED TO THIRD PARTIES WITHOUT
WRITTEN CONSENT OF DIVERSIFIED WOODCRAFTS, INC. ANY
REPRODUCTION IN PART OR WHOLE WITHOUT WRITTEN
CONSENT IS SUBJECT TO LEGAL ACTION.

A	CREATED DRAWING	9/1/21	EMR	N/A
REV.	DESCRIPTION	DATE	NAME	ECN No.
	REVISION LEVEL			



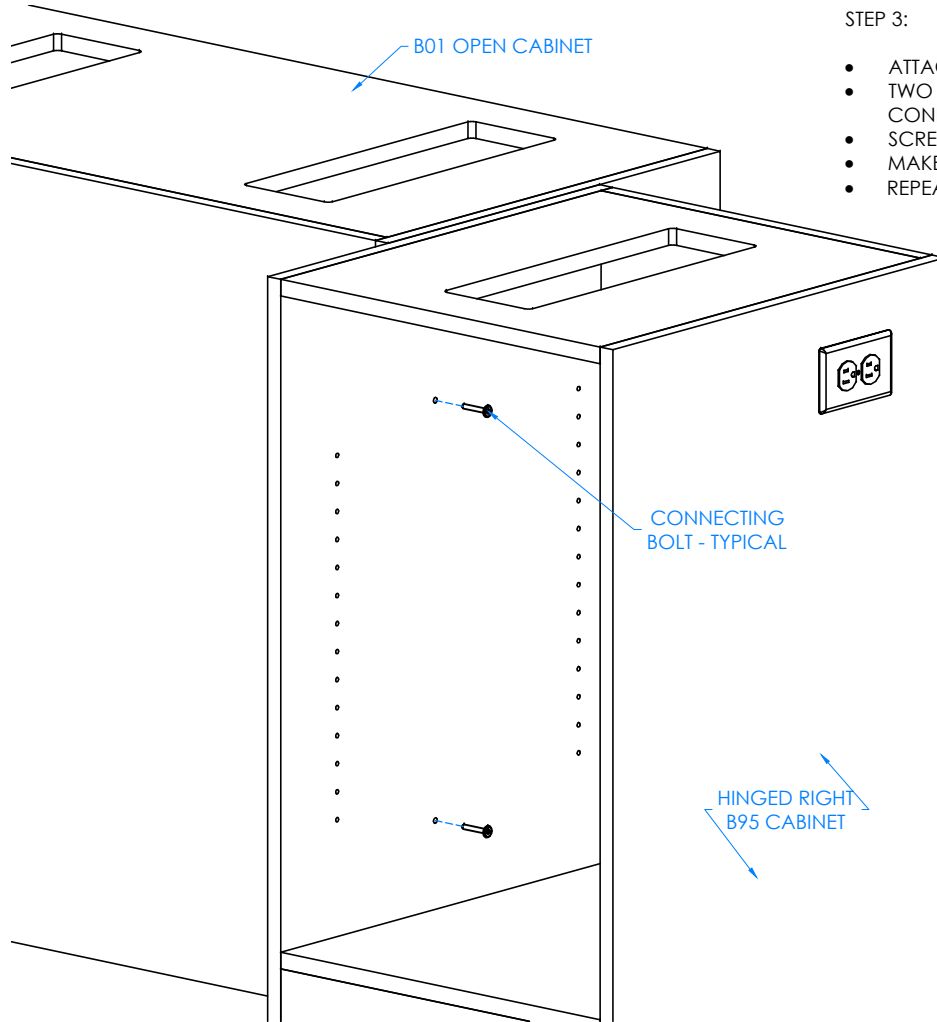
300 South Krueger Street
Suring, WI 54174
diversifiedwoodcrafts.com

TITLE:
AXIS EVOLVE - ROBOTICS WORKSTATION
ASSEMBLY INSTRUCTIONS

DRAWING NUMBER:	SCALE:	SHEET:	REVISION:
AE80130, AE80134, & AE80136	NTS	4 OF 8	REV A

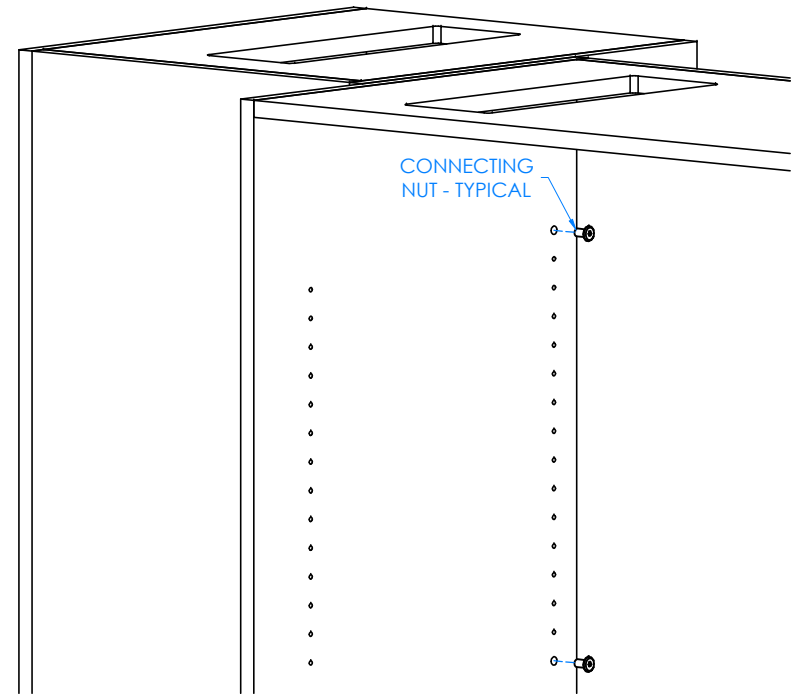
STEP 3:

- ATTACH ONE DOOR CABINET TO THE OPEN BASE CABINET WITH CONNECTING NUTS AND BOLTS PROVIDED.
- TWO CONNECTING BOLTS SHOULD BE PLACED ON THE INSIDE OF ONE DOOR CABINET AND TWO CONNECTING NUTS SHOULD BE PLACED IN THE INSIDE OF THE OPEN BASE CABINET.
- SCREW NUTS ONTO BOLTS.
- MAKE SURE ALL NUTS ARE ON TIGHT.
- REPEAT STEP FOR OTHER DOOR CABINET.



INSIDE OF DOOR CABINET - FRONT VIEW

DOORS AND HARDWARE REMOVED TO
SHOW CLARITY



INSIDE OF OPEN CABINET - BACK VIEW

ALL DIMENSIONS ARE IN INCHES UNLESS NOTED OTHERWISE DECIMALS: X = ± .030 XX = ± .020 XXX = ± .010 ANGLES: = ± 1° CABINET SQUARENESS: = ± .0625	DWN BY: EMR APR BY: APR	DATE DWN: 9/1/21 DATE APR:
--	----------------------------------	-------------------------------------

CONFIDENTIAL:
ALL DESIGN RIGHTS RESERVED
THE INFORMATION, DATA, DESIGN, AND DRAWINGS EMBODIED
IN THIS DOCUMENT AND ALL REPRODUCTIONS THEREOF ARE
THE EXCLUSIVE PROPERTY OF DIVERSIFIED WOODCRAFTS, INC.

THESE DOCUMENTS ARE SUPPLIED WITH THE UNDERSTANDING
THAT THEY WILL NOT BE DISCLOSED TO THIRD PARTIES WITHOUT
WRITTEN CONSENT OF DIVERSIFIED WOODCRAFTS, INC. ANY
REPRODUCTION IN PART OR WHOLE WITHOUT WRITTEN
CONSENT IS SUBJECT TO LEGAL ACTION.

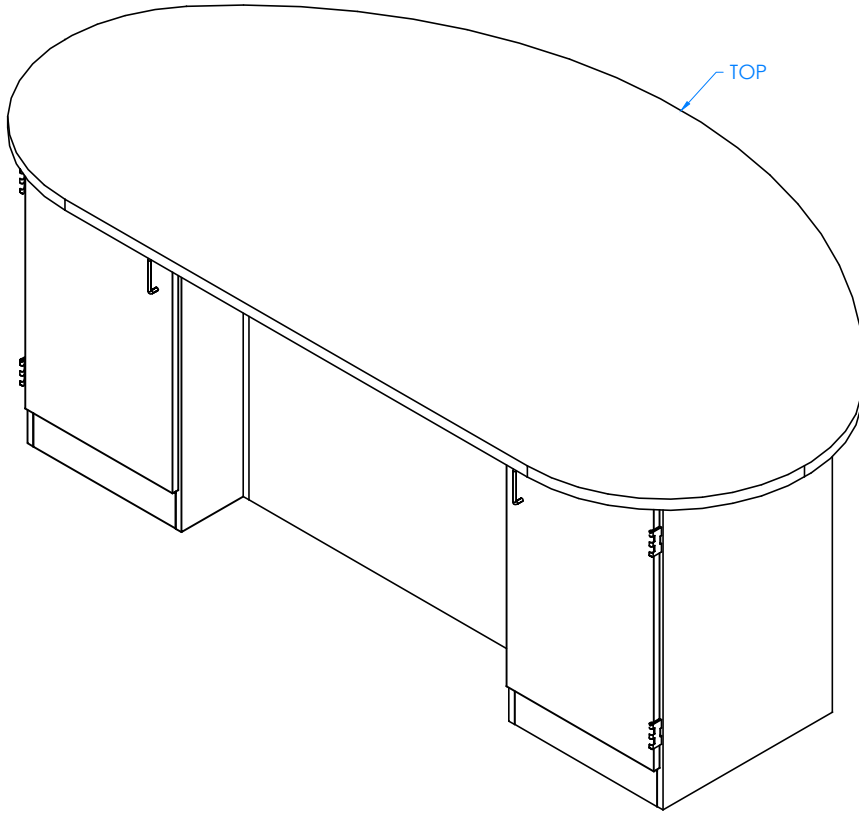


300 South Krueger Street
Suring, WI 54174
diversifiedwoodcrafts.com

TITLE:
AXIS EVOLVE - ROBOTICS WORKSTATION
ASSEMBLY INSTRUCTIONS

REV.	DESCRIPTION	DATE	NAME	ECN No.
A	CREATED DRAWING	9/1/21	EMR	N/A
REVISION LEVEL				

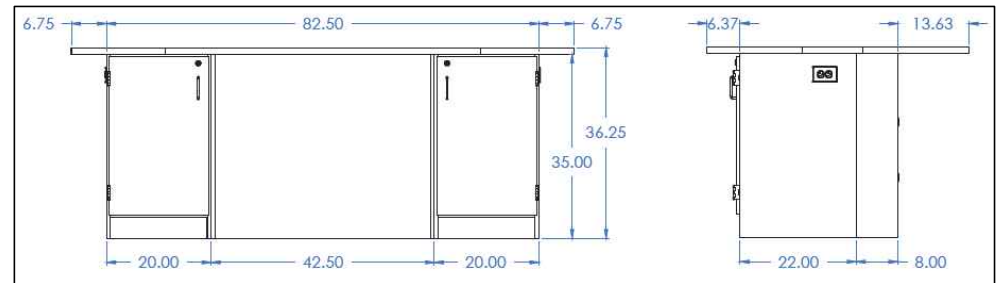
DRAWING NUMBER:	SCALE:	SHEET:	REVISION:
AE80130, AE80134, & AE80136	NTS	5 OF 8	REV A



STEP 4:

- PLACE TOP ON CABINETS WITH PROPER OVERHANG (SEE IMAGE BELOW).
- ATTACH TOP TO CABINETS WITH HARDWARE PROVIDED.
- SCREW THROUGH INSIDE OF CABINETS INTO THE TOP.
- PRE-DRILL HOLES IN TOP TO PREVENT CRACKING.
- MAKE SURE SCREWS ARE TIGHT AND TOP IS SECURE.

TOP PLACEMENT LAYOUT



NOTE:

1.

ALL DIMENSIONS ARE IN INCHES UNLESS NOTED OTHERWISE	DWN BY: EMR	DATE DWN: 9/1/21
DECIMALS: X = ± .030	APR BY:	DATE APR:
XX = ± .020	APR BY:	DATE APR:
XXX = ± .010	APR BY:	DATE APR:
ANGLES: = ± 1°0'		
CABINET SQUARENESS: = ± .0625		

CONFIDENTIAL:
ALL DESIGN RIGHTS RESERVED
THE INFORMATION, DATA, DESIGN, AND DRAWINGS EMBODIED IN THIS DOCUMENT AND ALL REPRODUCTIONS THEREOF ARE THE EXCLUSIVE PROPERTY OF DIVERSIFIED WOODCRAFTS, INC.

THESE DOCUMENTS ARE SUPPLIED WITH THE UNDERSTANDING THAT THEY WILL NOT BE DISCLOSED TO THIRD PARTIES WITHOUT WRITTEN CONSENT OF DIVERSIFIED WOODCRAFTS, INC. ANY REPRODUCTION IN PART OR WHOLE WITHOUT WRITTEN CONSENT IS SUBJECT TO LEGAL ACTION.



300 South Krueger Street
Suring, WI 54174
diversifiedwoodcrafts.com

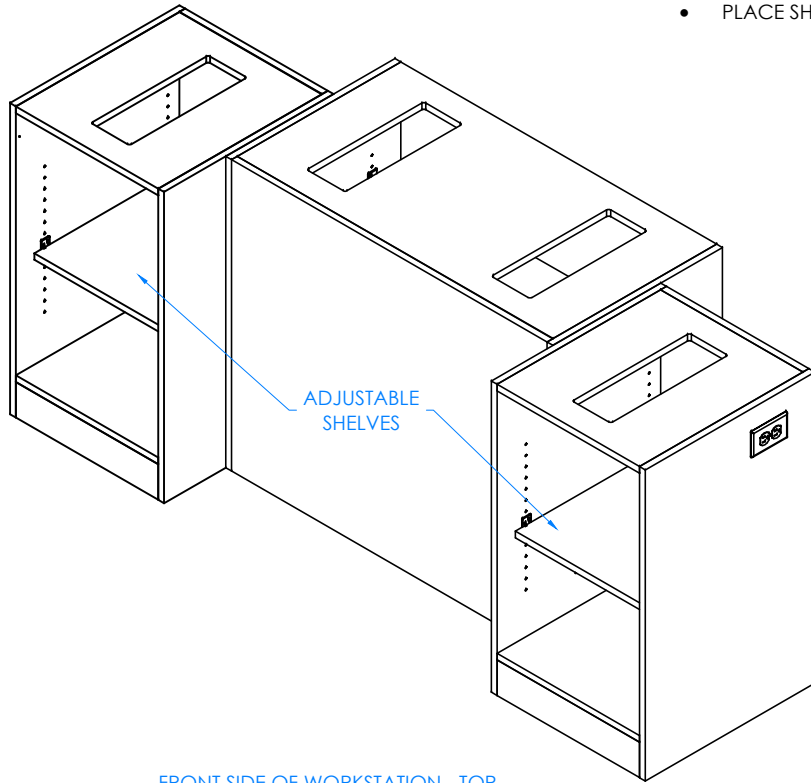
TITLE:
AXIS EVOLVE - ROBOTICS WORKSTATION
ASSEMBLY INSTRUCTIONS

A	CREATED DRAWING	9/1/21	EMR	N/A
REV.	DESCRIPTION	DATE	NAME	ECN No.
	REVISION LEVEL			

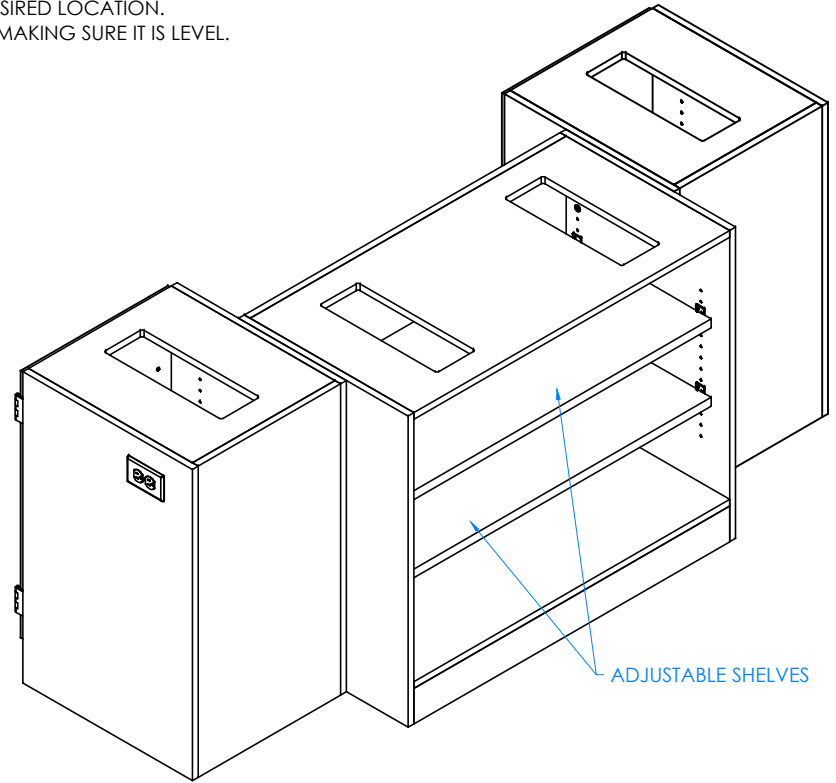
DRAWING NUMBER:	SCALE:	SHEET:	REVISION:
AE80130, AE80134, & AE80136	NTS	6 OF 8	REV A

STEP 5:

- INSERT SHELF CLIPS IN DESIRED LOCATION.
- PLACE SHELF ON CLIPS, MAKING SURE IT IS LEVEL.



FRONT SIDE OF WORKSTATION - TOP
REMOVED TO SHOW CLARITY



BACK SIDE OF WORKSTATION - TOP
REMOVED TO SHOW CLARITY

NOTE:

1.

ALL DIMENSIONS ARE IN INCHES UNLESS NOTED OTHERWISE	DWN BY:	EMR	DATE DWN:	9/1/21
DECIMALS: X = ± .030	APR BY:		DATE APR:	
XX = ± .020	APR BY:		DATE APR:	
XXX = ± .010	APR BY:		DATE APR:	
ANGLES: = ± 1°				
CABINET SQUARENESS: = ± .0625				

CONFIDENTIAL:
ALL DESIGN RIGHTS RESERVED
THE INFORMATION, DATA, DESIGN, AND DRAWINGS EMBODIED
IN THIS DOCUMENT AND ALL REPRODUCTIONS THEREOF ARE
THE EXCLUSIVE PROPERTY OF DIVERSIFIED WOODCRAFTS, INC.

THESE DOCUMENTS ARE SUPPLIED WITH THE UNDERSTANDING
THAT THEY WILL NOT BE DISCLOSED TO THIRD PARTIES WITHOUT
WRITTEN CONSENT OF DIVERSIFIED WOODCRAFTS, INC. ANY
REPRODUCTION IN PART OR WHOLE WITHOUT WRITTEN
CONSENT IS SUBJECT TO LEGAL ACTION.

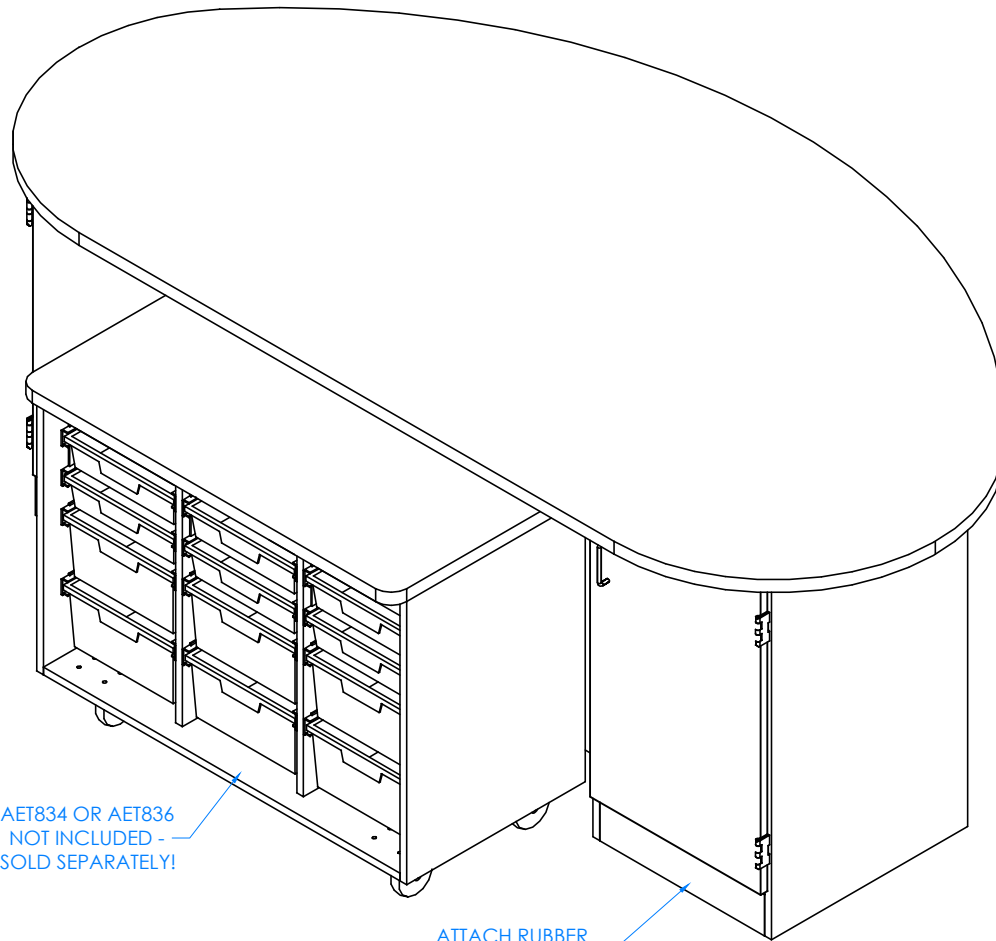


300 South Krueger Street
Suring, WI 54174
diversifiedwoodcrafts.com

TITLE:
AXIS EVOLVE - ROBOTICS WORKSTATION
ASSEMBLY INSTRUCTIONS

A	CREATED DRAWING	9/1/21	EMR	N/A
REV.	DESCRIPTION	DATE	NAME	ECN No.
	REVISION LEVEL			

DRAWING NUMBER:	SCALE:	SHEET:	REVISION:
AE80130, AE80134, & AE80136	NTS	7 OF 8	REV A



STEP 6:

- ATTACH RUBBER MOLDING TO BASE USING CONTACT CEMENT.
- SCREW STAINLESS STEEL CORNER BRACKETS ON EACH CORNER OVER THE BASE MOLDING WITH HARDWARE PROVIDED.

COMPLETE UNIT SHOWN

NOTE:

1. MOBILE UNIT SOLD SEPARATELY.
2. ALL WATER, ELECTRICAL, AND GAS CONNECTIONS SHOULD BE PERFORMED BY A TRAINED PROFESSIONAL PER LOCAL CODE.

ALL DIMENSIONS ARE IN INCHES UNLESS NOTED OTHERWISE	DWN BY:	EMR	DATE DWN:	9/1/21
DECIMALS: $\pm .030$	APR BY:		DATE APR:	
XX = $\pm .020$	APR BY:		DATE APR:	
XXX = $\pm .010$	APR BY:		DATE APR:	
ANGLES: $\pm 1^\circ$	APR BY:		DATE APR:	
CABINET SQUARENESS: $\pm .0625$	APR BY:		DATE APR:	

CONFIDENTIAL:
ALL DESIGN RIGHTS RESERVED
THE INFORMATION, DATA, DESIGN, AND DRAWINGS EMBODIED IN THIS DOCUMENT AND ALL REPRODUCTIONS THEREOF ARE THE EXCLUSIVE PROPERTY OF DIVERSIFIED WOODCRAFTS, INC.

THESE DOCUMENTS ARE SUPPLIED WITH THE UNDERSTANDING THAT THEY WILL NOT BE DISCLOSED TO THIRD PARTIES WITHOUT WRITTEN CONSENT OF DIVERSIFIED WOODCRAFTS, INC. ANY REPRODUCTION IN PART OR WHOLE WITHOUT WRITTEN CONSENT IS SUBJECT TO LEGAL ACTION.



300 South Krueger Street
Suring, WI 54174
diversifiedwoodcrafts.com

TITLE:
AXIS EVOLVE - ROBOTICS WORKSTATION
ASSEMBLY INSTRUCTIONS

A	CREATED DRAWING	9/1/21	EMR	N/A
REV.	DESCRIPTION	DATE	NAME	ECN No.
	REVISION LEVEL			

DRAWING NUMBER:	SCALE:	SHEET:	REVISION:
AE80130, AE80134, & AE80136	NTS	8 OF 8	REV A