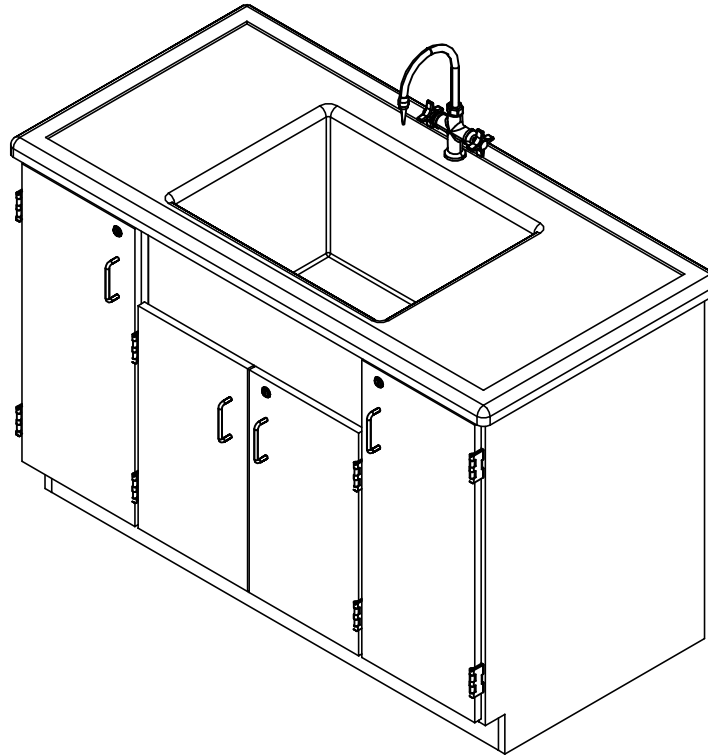


# CLEAN UP SINK

3303 (OAK OR MAPLE)  
ASSEMBLY INSTRUCTIONS



## NOTE:

1. MODEL VIEWS MAY NOT REPRESENT EXACT MODEL PURCHASED

A	CREATED ASSEMBLY INSTRUCTIONS	4/21/15	EMR	-
REV.	DESCRIPTION	DATE	NAME	ECN NO.
REVISION LEVEL				

ALL DIMENSIONS ARE IN INCHES UNLESS NOTED OTHERWISE  
 DECIMALS: .X = ± .030  
 .XX = ± .020  
 .XXX = ± .010  
 ANGLES: = ± 1°  
 CABINET SQUARENESS = ± .0625

CONFIDENTIAL:  
 ALL DESIGN RIGHTS RESERVED  
 THE INFORMATION, DATA, DESIGN, AND DRAWINGS EMBODIED IN THIS DOCUMENT AND ALL REPRODUCTIONS THEREOF ARE THE EXCLUSIVE PROPERTY OF DIVERSIFIED WOODCRAFTS, INC.

THESE DOCUMENTS ARE SUPPLIED WITH THE UNDERSTANDING THAT THEY WILL NOT BE DISCLOSED TO THIRD PARTIES WITHOUT WRITTEN CONSENT OF DIVERSIFIED WOODCRAFTS, INC. ANY REPRODUCTION IN PART OR WHOLE WITHOUT WRITTEN CONSENT IS SUBJECT TO LEGAL ACTION.

DWN BY:	EMR	DATE DWN:	4/21/15
APR BY:		DATE APR:	
APR BY:		DATE APR:	



300 South Krueger Street  
 Suring, WI 54174  
[diversifiedwoodcrafts.com](http://diversifiedwoodcrafts.com)

TITLE:  
**CLEAN UP SINK  
 ASSEMBLY INSTRUCTIONS**

DRAWING NUMBER:

**3303**

SCALE:

NTS

SHEET:

1 OF 5

REVISION:

REV A

## TOOLS REQUIRED

CONTACT CEMENT

SCREW DRIVER

## ASSEMBLY COMPONENTS

ITEMS INCLUDED	PART #	PART DESCRIPTION	QTY
RUBBER BASE MOLDING	100283	RUBBER BASE MOLDING (SOLD BY FOOT)	8.5
STAINLESS STEEL CORNERS	100057	CORNERS-STAINLESS STEEL, BASE	2
SCREWS - BASE	100064	SCREW, #6X $\frac{1}{2}$ PTH SMS SS SCREW	8
SHELF CLIPS	100027	SHELF CLIPS, PLASTIC, 5MM PIN	8
FIXTURE	100467	FIXTUREW, L414 HOT & COLD MIXING	1
SINK TRAP	100056	SINK TRAP, PLASTIC ADJUSTABLE	1

### NOTE:

1.

ALL DIMENSIONS ARE IN INCHES UNLESS NOTED OTHERWISE	DWN BY: EMR	DATE DWN: 4/21/15
DECIMALS: $\frac{1}{16}$ = $\pm .030$	APR BY:	DATE APR:
XX = $\pm .020$	APR BY:	DATE APR:
XXX = $\pm .010$	APR BY:	DATE APR:
ANGLES: $\pm 1^\circ$	APR BY:	DATE APR:
CABINET SQUARENESS: $\pm .0625$	APR BY:	DATE APR:

CONFIDENTIAL:  
ALL DESIGN RIGHTS RESERVED  
THE INFORMATION, DATA, DESIGN, AND DRAWINGS EMBODIED IN THIS DOCUMENT AND ALL REPRODUCTIONS THEREOF ARE THE EXCLUSIVE PROPERTY OF DIVERSIFIED WOODCRAFTS, INC.

THESE DOCUMENTS ARE SUPPLIED WITH THE UNDERSTANDING THAT THEY WILL NOT BE DISCLOSED TO THIRD PARTIES WITHOUT WRITTEN CONSENT OF DIVERSIFIED WOODCRAFTS, INC. ANY REPRODUCTION IN PART OR WHOLE WITHOUT WRITTEN CONSENT IS SUBJECT TO LEGAL ACTION.



300 South Krueger Street  
Suring, WI 54174  
diversifiedwoodcrafts.com

TITLE:  
CLEAN UP SINK  
TOOLS AND ASSEMBLY COMPONENTS

DRAWING NUMBER:

3303

SCALE:

NTS

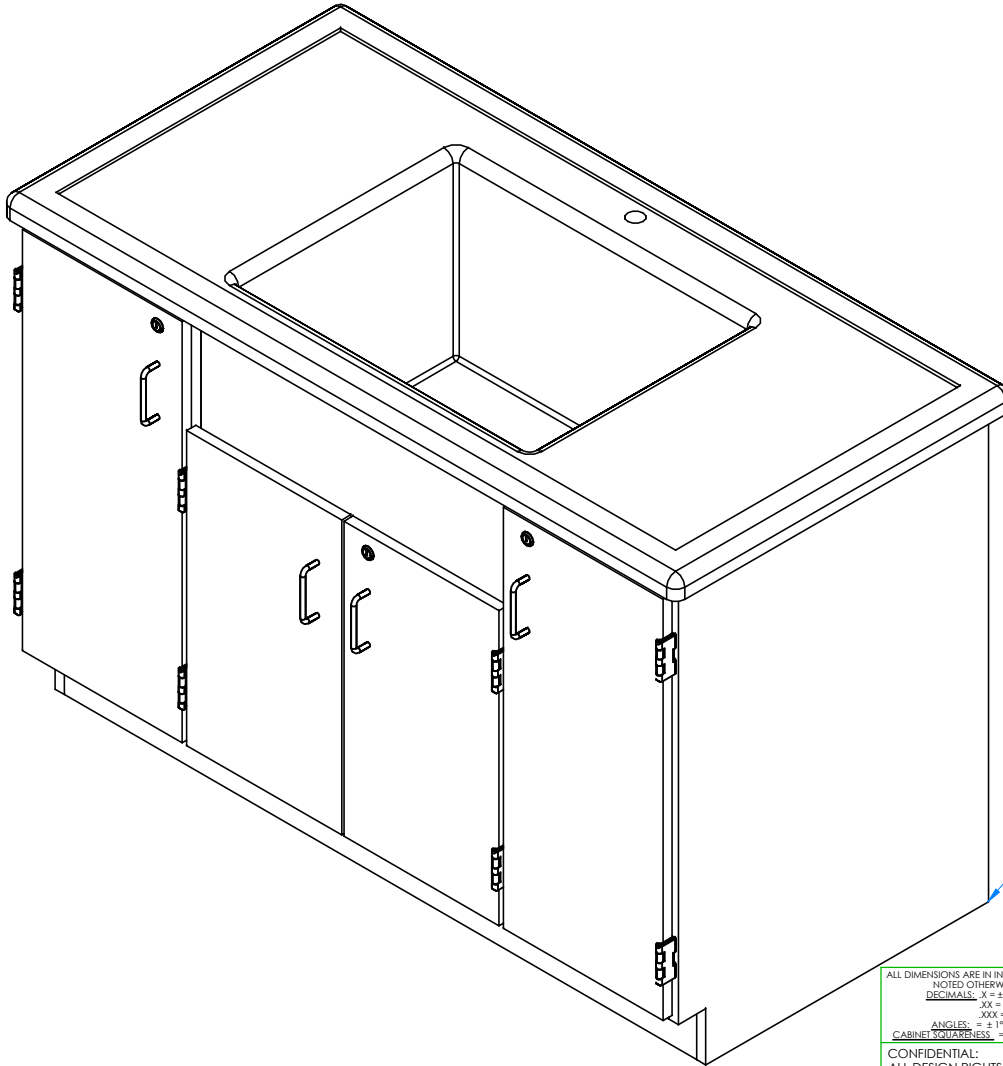
SHEET:

2 OF 5

REVISION:

REV A

REV.	DESCRIPTION	DATE	NAME	ECN NO.
A	CREATED ASSEMBLY INSTRUCTIONS	4/21/15	EMR	-
REVISION LEVEL				



## STEP 1:

- PLACE UNIT OVER PLUMBING HOOK-UP.
- LEVEL CABINET.
- ANCHOR TO WALL.

**\*\*NOTE\*\***

CABINET MUST BE LEVELED OR  
DOORS AND DRAWERS MAY NOT  
OPEN OR CLOSE CORRECTLY

NOTE:

1.

ALL DIMENSIONS ARE IN INCHES UNLESS  
NOTED OTHERWISE  
DECIMALS: .X = ± .030  
.XX = ± .020  
.XXX = ± .010  
ANGLES: = ± 1°0'  
CABINET SQUARENESS = ± .0625

DWN BY:	EMR	DATE DWN:	4/21/15
APR BY:		DATE APR:	
APR BY:		DATE APR:	

CONFIDENTIAL:  
ALL DESIGN RIGHTS RESERVED  
THE INFORMATION, DATA, DESIGN, AND DRAWINGS EMBODIED  
IN THIS DOCUMENT AND ALL REPRODUCTIONS THEREOF ARE  
THE EXCLUSIVE PROPERTY OF DIVERSIFIED WOODCRAFTS, INC.

THESE DOCUMENTS ARE SUPPLIED WITH THE UNDERSTANDING  
THAT THEY WILL NOT BE DISCLOSED TO THIRD PARTIES WITHOUT  
WRITTEN CONSENT OF DIVERSIFIED WOODCRAFTS, INC. ANY  
REPRODUCTION IN PART OR WHOLE WITHOUT WRITTEN  
CONSENT IS SUBJECT TO LEGAL ACTION.



300 South Krueger Street  
Suring, WI 54174  
diversifiedwoodcrafts.com

TITLE:  
CLEAN UP SINK  
ASSEMBLY INSTRUCTIONS

A	CREATED ASSEMBLY INSTRUCTIONS	4/21/15	EMR	-
REV.	DESCRIPTION	DATE	NAME	ECN NO.
REVISION LEVEL				

DRAWING NUMBER:

3303

SCALE:

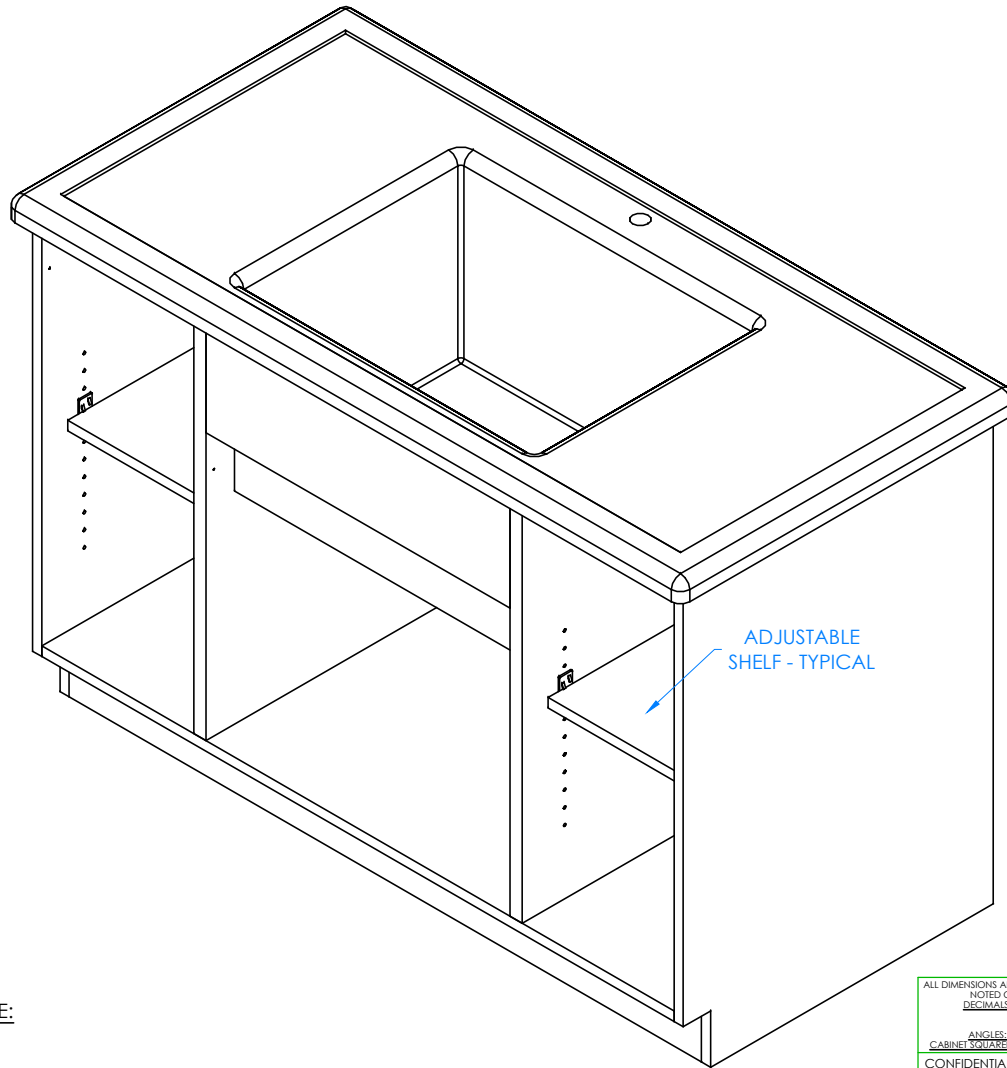
NTS

SHEET:

3 OF 5

REVISION:

REV A



## STEP 2:

- INSERT SHELF CLIPS IN DESIRED LOCATION.
- PLACE SHELVES ON CLIPS, MAKING SURE THEY ARE LEVEL.

## NOTE:

1.

DOORS AND HARDWARE REMOVED TO SHOW CLARITY

ALL DIMENSIONS ARE IN INCHES UNLESS NOTED OTHERWISE	DWN BY:	EMR	DATE DWN:	4/21/15
DECIMALS: $\frac{1}{8}$ = $\pm .030$	APR BY:		DATE APR:	
$\frac{1}{4}$ = $\pm .020$	APR BY:		DATE APR:	
$\frac{3}{8}$ = $\pm .010$	APR BY:		DATE APR:	
ANGLES: $\pm 1^\circ$	APR BY:		DATE APR:	
CABINET SQUARENESS: $\pm .0625$	APR BY:		DATE APR:	

CONFIDENTIAL:  
ALL DESIGN RIGHTS RESERVED  
THE INFORMATION, DATA, DESIGN, AND DRAWINGS EMBODIED IN THIS DOCUMENT AND ALL REPRODUCTIONS THEREOF ARE THE EXCLUSIVE PROPERTY OF DIVERSIFIED WOODCRAFTS, INC.

THESE DOCUMENTS ARE SUPPLIED WITH THE UNDERSTANDING THAT THEY WILL NOT BE DISCLOSED TO THIRD PARTIES WITHOUT WRITTEN CONSENT OF DIVERSIFIED WOODCRAFTS, INC. ANY REPRODUCTION IN PART OR WHOLE WITHOUT WRITTEN CONSENT IS SUBJECT TO LEGAL ACTION.



300 South Krueger Street  
Suring, WI 54174  
diversifiedwoodcrafts.com

TITLE:  
CLEAN UP SINK  
ASSEMBLY INSTRUCTIONS

DRAWING NUMBER:

3303

SCALE:

NTS

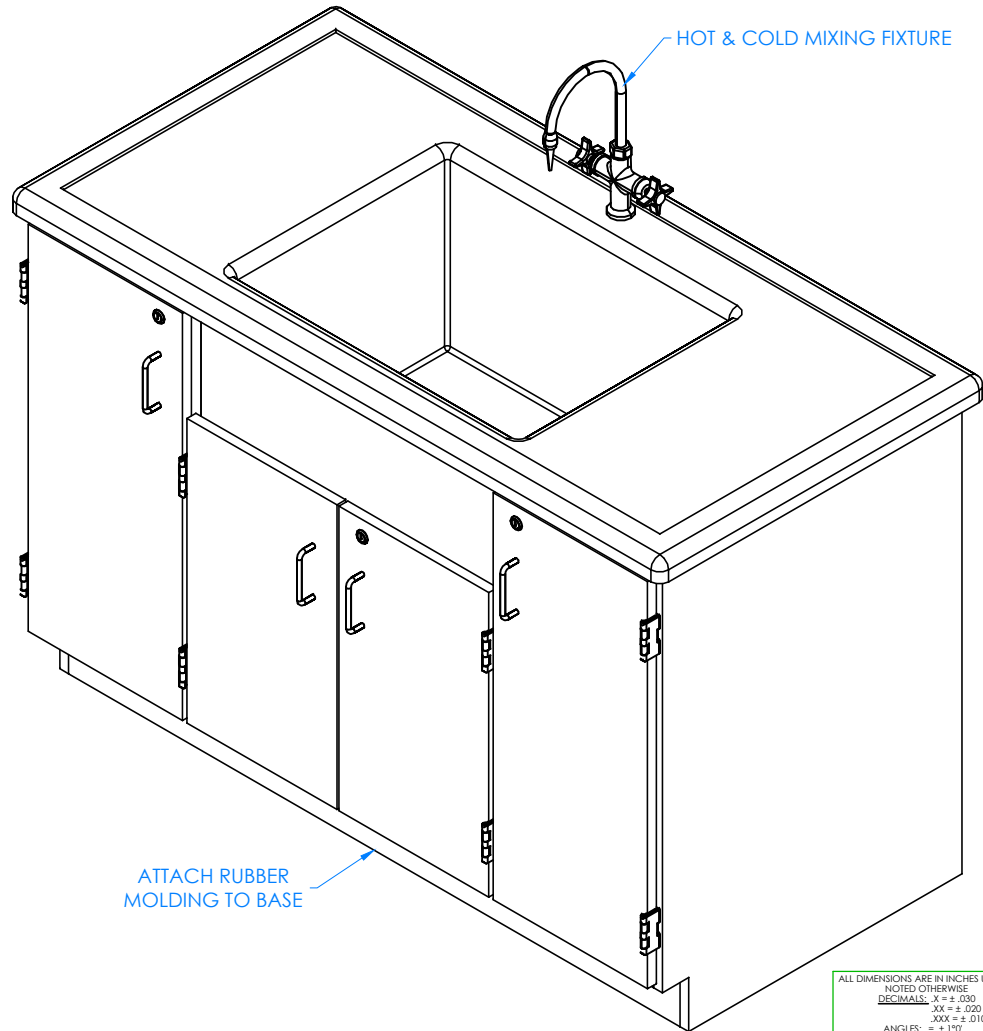
SHEET:

4 OF 5

REVISION:

REV A

REV.	DESCRIPTION	DATE	NAME	ECN NO.
A	CREATED ASSEMBLY INSTRUCTIONS	4/21/15	EMR	-
REVISION LEVEL				



## STEP 3:

- ATTACH RUBBER MOLDING TO BASE OF CABINET USING CONTACT CEMENT.
- SCREW STAINLESS STEEL CORNER BRACKETS ON EACH CORNER OVER BASE MOLDING WITH HARDWARE PROVIDED.
- MOUNT FIXTURE INTO PLACE AND HOOK UP WATER AND DRAIN.

## NOTE:

1. ALL PLUMBING NEEDS TO BE DONE BY A LICENSED PLUMBER PER LOCAL CODE.

## COMPLETE UNIT SHOWN

A	CREATED ASSEMBLY INSTRUCTIONS	4/21/15	EMR	-
REV.	DESCRIPTION	DATE	NAME	ECN NO.
	REVISION LEVEL			

ALL DIMENSIONS ARE IN INCHES UNLESS NOTED OTHERWISE  
 DECIMALS: .X = ± .030  
 .XX = ± .020  
 .XXX = ± .010  
 ANGLES: = ± 1°  
 CABINET SQUARENESS = ± .0625

CONFIDENTIAL:  
 ALL DESIGN RIGHTS RESERVED  
 THE INFORMATION, DATA, DESIGN, AND DRAWINGS EMBODIED IN THIS DOCUMENT AND ALL REPRODUCTIONS THEREOF ARE THE EXCLUSIVE PROPERTY OF DIVERSIFIED WOODCRAFTS, INC.

THESE DOCUMENTS ARE SUPPLIED WITH THE UNDERSTANDING THAT THEY WILL NOT BE DISCLOSED TO THIRD PARTIES WITHOUT WRITTEN CONSENT OF DIVERSIFIED WOODCRAFTS, INC. ANY REPRODUCTION IN PART OR WHOLE WITHOUT WRITTEN CONSENT IS SUBJECT TO LEGAL ACTION.

DWN BY: EMR	DATE DWN: 4/21/15		300 South Krueger Street Suring, WI 54174 <a href="http://diversifiedwoodcrafts.com">diversifiedwoodcrafts.com</a>
APR BY:	DATE APR:		
APR BY:	DATE APR:	TITLE: <b>CLEAN UP SINK          ASSEMBLY INSTRUCTIONS</b>	
DRAWING NUMBER:		3303	SCALE: NTS SHEET: 5 OF 5 REVISION: REV A