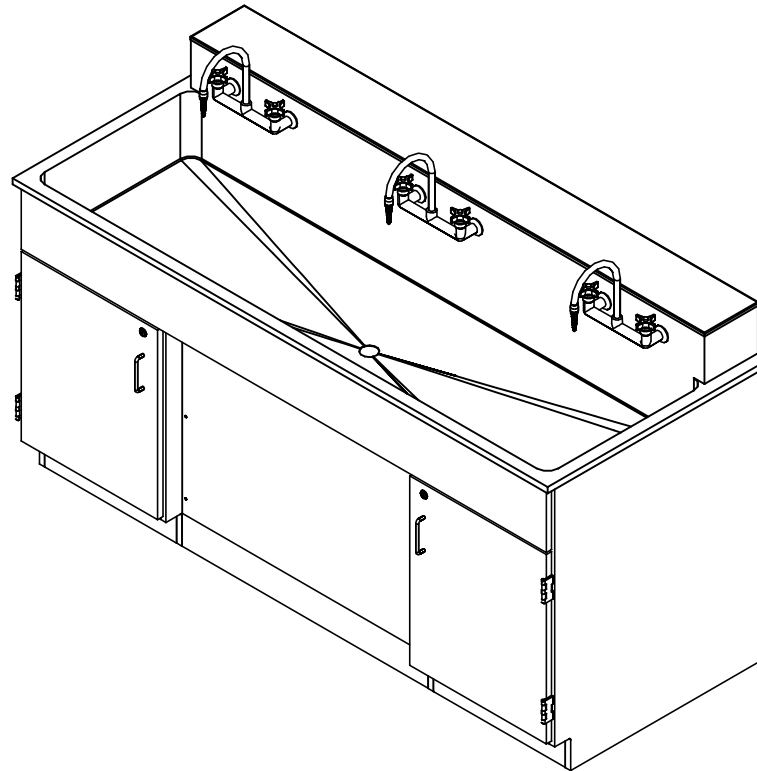


ART SINK WORKSTATION

3010 & 3010-ADA SERIES (OAK OR MAPLE)
ASSEMBLY INSTRUCTIONS



NOTE:

1. MODEL VIEWS MAY NOT REPRESENT EXACT MODEL PURCHASED

ALL DIMENSIONS ARE IN INCHES UNLESS NOTED OTHERWISE	DWN BY:	EMR	DATE DWN:	10/4/19
DECIMALS: $\times = \pm .000$	APR BY:		DATE APR:	
$_{XX} = \pm .020$	APR BY:		DATE APR:	
$_{XXX} = \pm .010$	APR BY:		DATE APR:	
ANGLES: $= \pm 1^{\circ}0'$	APR BY:		DATE APR:	
CABINET SQUARENESS: $= \pm .0625$	APR BY:		DATE APR:	

CONFIDENTIAL:
ALL DESIGN RIGHTS RESERVED
THE INFORMATION, DATA, DESIGN, AND DRAWINGS EMBODIED IN THIS DOCUMENT AND ALL REPRODUCTIONS THEREOF ARE THE EXCLUSIVE PROPERTY OF DIVERSIFIED WOODCRAFTS, INC.

THESE DOCUMENTS ARE SUPPLIED WITH THE UNDERSTANDING THAT THEY WILL NOT BE DISCLOSED TO THIRD PARTIES WITHOUT WRITTEN CONSENT OF DIVERSIFIED WOODCRAFTS, INC. ANY REPRODUCTION IN PART OR WHOLE WITHOUT WRITTEN CONSENT IS SUBJECT TO LEGAL ACTION.



300 South Krueger Street
Suring, WI 54174
diversifiedwoodcrafts.com

TITLE:
**STAINLESS STEEL WALL ART SINK WORKSTATION
ASSEMBLY INSTRUCTIONS**

REV.	DESCRIPTION	DATE	NAME	ECN NO.
A	CREATED DRAWING	10/4/19	EMR	-
REVISION LEVEL				

DRAWING NUMBER:	SCALE:	SHEET:	REVISION:
3010 & 3010-ADA SERIES	NTS	1 OF 12	REV A

TOOLS REQUIRED

CONTACT CEMENT

DRILL

ASSEMBLY COMPONENTS

ITEMS INCLUDED	PART #	PART DESCRIPTION	QTY
CABINET	N/A	B95 - 24"W X 22"D X (HEIGHT VARIES)	1
CABINET	N/A	B96 - 24"W X 22"D X (HEIGHT VARIES)	1
SINK APRON RAIL	N/A	0.75"THK X (WIDTH VARIES) X 73.63"L	1
TOEKICK	N/A	0.75"THK X 4.00"W X 34.50"L	1
REMOVABLE PANEL	N/A	0.75"THK X 34.50"W X 24.00"L	1
BACK RAIL	N/A	0.75"THK X 4.00"W X 34.50"L	1
UPPER REMOVABLE PANEL	N/A	0.75"THK X 34.50"W X 19.13"L	1
LOWER REMOVABLE PANEL	N/A	0.75"THK X 34.50"W X 9.25"L	1
SCREWS - REMOVABLE PANELS AND TOEKICK	100495	SCREW,# 10X1-1/2 PHIL TR. SMS,ZN	VARIES
BRACKET - BACK RAIL	100525	BRACKET,RAIL 1.5 X 1.5 X .125,1.885L	2
BRACKET - SINK FRONT	100355	BRACKET,RAIL 1.25X1.25X4.25	4
SCREWS - BRACKETS	100649	SCREW,#8X3/4 PHIL TRUSS HEAD SMS	24
SINK	VARIES	SINK, SST ART SINK, (REG OR ADA),72" W/CAP	1
FIXTURE - FAUCET	255173	FIXTURE,LF-511 WSA-55, MIXING GOOSENECK	VARIES
FIXTURE - FAUCET	255174	FIXTURE,LF521 WSA,MIXING GOOSENECK, BLADE HANDLE	VARIES
FIXTURE - SINK OUTLET	252999	SS SINK OUTLET W/CRUMB CUP	1
SHELF CLIPS	100027	SHELF CLIPS,PLASTIC,5MM PIN	8

NOTE:

1. COMPONENTS VARY WITH STYLE OF UNIT PURCHASED.
2. CABINET HEIGHTS VARY WITH STYLE OF UNIT PURCHASED.
 - 2.1. EX. 3010K = 36.25"H OR 3010K-ADA = 33"H
3. KNEE SPACE PARTS VARY WITH STYLE OF UNIT PURCHASED.
 - 3.1. EX. 3010K = WILL GET TOEKICK, REMOVABLE PANEL, AND BACK RAIL.
 - 3.2. EX. 3010K-ADA = WILL GET UPPER AND LOWER REMOVABLE PANELS AND BACK RAIL.

ALL DIMENSIONS ARE IN INCHES UNLESS NOTED OTHERWISE	DWN BY: EMR	DATE DWN: 10/4/19
DECIMALS: X = ± .000	APR BY:	DATE APR:
XX = ± .020	APR BY:	DATE APR:
.XXX = ± .010	APR BY:	DATE APR:
ANGLES: = ± 1'0"	APR BY:	DATE APR:
CABINET SQUARENESS: = ± .0625	APR BY:	DATE APR:

CONFIDENTIAL:
ALL DESIGN RIGHTS RESERVED
THE INFORMATION, DATA, DESIGN, AND DRAWINGS EMBODIED IN THIS DOCUMENT AND ALL REPRODUCTIONS THEREOF ARE THE EXCLUSIVE PROPERTY OF DIVERSIFIED WOODCRAFTS, INC.

THESE DOCUMENTS ARE SUPPLIED WITH THE UNDERSTANDING THAT THEY WILL NOT BE DISCLOSED TO THIRD PARTIES WITHOUT WRITTEN CONSENT OF DIVERSIFIED WOODCRAFTS, INC. ANY REPRODUCTION IN PART OR WHOLE WITHOUT WRITTEN CONSENT IS SUBJECT TO LEGAL ACTION.



300 South Krueger Street
Suring, WI 54174
diversifiedwoodcrafts.com

TITLE:
STAINLESS STEEL WALL ART SINK WORKSTATION
TOOLS AND ASSEMBLY COMPONENTS

DRAWING NUMBER: 3010 & 3010-ADA SERIES	SCALE: NTS	SHEET: 2 OF 12	REVISION: REV A
--	---------------	-------------------	--------------------

A	CREATED DRAWING	10/4/19	EMR	-
REV.	DESCRIPTION	DATE	NAME	ECN NO.
REVISION LEVEL				

ASSEMBLY COMPONENTS			
ITEMS INCLUDED	PART #	PART DESCRIPTION	QTY
RUBBER BASE MOLDING	100283	RUBBER BASE MOLDING (SOLD BY FOOT)	VARIES
STAINLESS STEEL CORNERS	100057	CORNERS-STAINLESS STEEL,BASE	VARIES
SCREWS - BASE	100064	SCREW, #6X $\frac{1}{2}$ PTH SMS SS SCREW	VARIES

NOTE:


1. COMPONENTS VARY WITH STYLE OF UNIT PURCHASED.
2. CABINET HEIGHTS VARY WITH STYLE OF UNIT PURCHASED.
 - 2.1. EX. 3010K = 36.25"H OR 3010K-ADA = 33"H
3. KNEE SPACE PARTS VARY WITH STYLE OF UNIT PURCHASED.
 - 3.1. EX. 3010K = WILL GET TOEKICK, REMOVABLE PANEL, AND BACK RAIL.
 - 3.2. EX. 3010K-ADA = WILL GET UPPER AND LOWER REMOVABLE PANELS AND BACK RAIL.

REV.	DESCRIPTION	DATE	NAME	ECN NO.
A	CREATED DRAWING	10/4/19	EMR	-
REVISION LEVEL				

ALL DIMENSIONS ARE IN INCHES UNLESS NOTED OTHERWISE DECIMALS: X = ± .000 XX = ± .020 XXX = ± .010 ANGLES: = ± 1° CABINET SQUARENESS: = ± .0625	DWN BY: EMR	DATE DWN: 10/4/19
	APR BY:	DATE APR:
	APR BY:	DATE APR:

CONFIDENTIAL:
ALL DESIGN RIGHTS RESERVED
THE INFORMATION, DATA, DESIGN, AND DRAWINGS EMBODIED IN THIS DOCUMENT AND ALL REPRODUCTIONS THEREOF ARE THE EXCLUSIVE PROPERTY OF DIVERSIFIED WOODCRAFTS, INC.

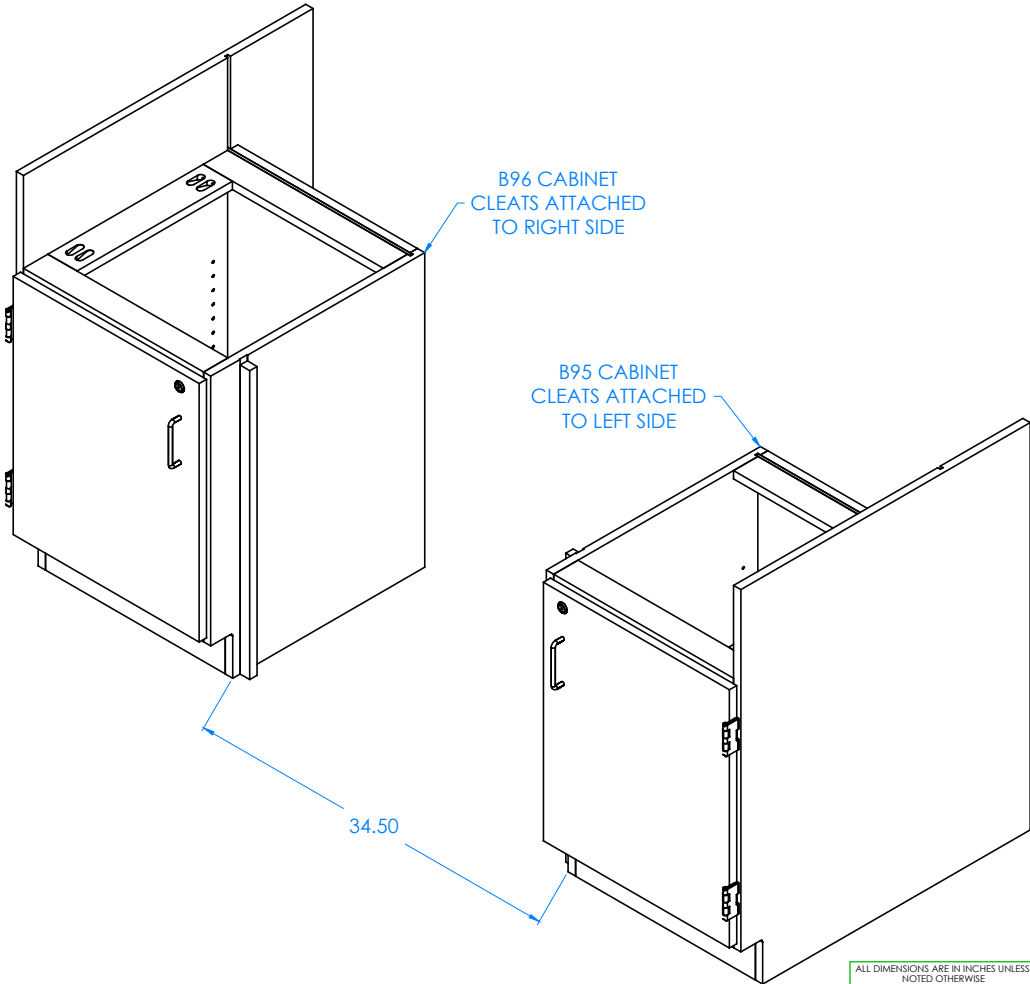
THESE DOCUMENTS ARE SUPPLIED WITH THE UNDERSTANDING THAT THEY WILL NOT BE DISCLOSED TO THIRD PARTIES WITHOUT WRITTEN CONSENT OF DIVERSIFIED WOODCRAFTS, INC. ANY REPRODUCTION IN PART OR WHOLE WITHOUT WRITTEN CONSENT IS SUBJECT TO LEGAL ACTION.



300 South Krueger Street
Suring, WI 54174
diversifiedwoodcrafts.com

TITLE:
STAINLESS STEEL WALL ART SINK WORKSTATION TOOLS AND ASSEMBLY COMPONENTS

DRAWING NUMBER: 3010 & 3010-ADA SERIES	SCALE: NTS	SHEET: 3 OF 12	REVISION: REV A
--	---------------	-------------------	--------------------



STEP 1:

- PLACE THE TWO CABINETS AGAINST THE WALL.
- CLEATS SHOULD BE FACING EACH OTHER.
- LEAVE ENOUGH ROOM IN BETWEEN CABINETS FOR REMOVABLE PANELS, APRONS, AND BACK RAIL.
- LEVEL CABINETS.
- ATTACH TO FLOOR.


NOTE:

1.

ALL DIMENSIONS ARE IN INCHES UNLESS NOTED OTHERWISE	DWN BY:	EMR	DATE DWN:	10/4/19
DECIMALS: .X = ± .000	APR BY:		DATE APR:	
.XX = ± .020	APR BY:		DATE APR:	
.XXX = ± .010	APR BY:		DATE APR:	
ANGLES: = ± 1°	APR BY:		DATE APR:	
CABINET SQUARENESS: = ± .0625	APR BY:		DATE APR:	

CONFIDENTIAL:
 ALL DESIGN RIGHTS RESERVED
 THE INFORMATION, DATA, DESIGN, AND DRAWINGS EMBODIED IN THIS DOCUMENT AND ALL REPRODUCTIONS THEREOF ARE THE EXCLUSIVE PROPERTY OF DIVERSIFIED WOODCRAFTS, INC.

THESE DOCUMENTS ARE SUPPLIED WITH THE UNDERSTANDING THAT THEY WILL NOT BE DISCLOSED TO THIRD PARTIES WITHOUT WRITTEN CONSENT OF DIVERSIFIED WOODCRAFTS, INC. ANY REPRODUCTION IN PART OR WHOLE WITHOUT WRITTEN CONSENT IS SUBJECT TO LEGAL ACTION.



300 South Krueger Street
 Suring, WI 54174
 diversifiedwoodcrafts.com

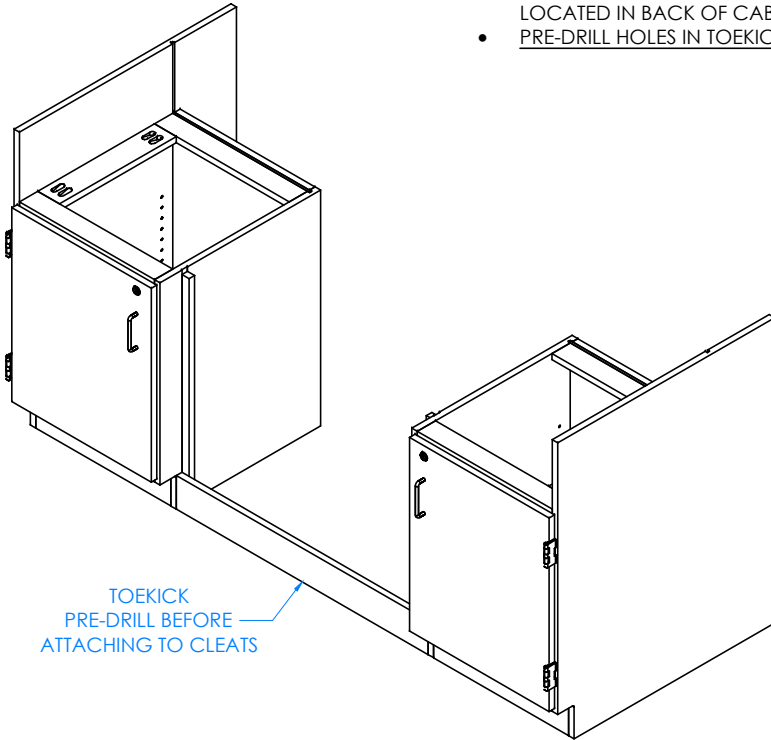
TITLE:
STAINLESS STEEL WALL ART SINK WORKSTATION ASSEMBLY INSTRUCTIONS

A	CREATED DRAWING	10/4/19	EMR	-
REV.	DESCRIPTION	DATE	NAME	ECN NO.
REVISION LEVEL				

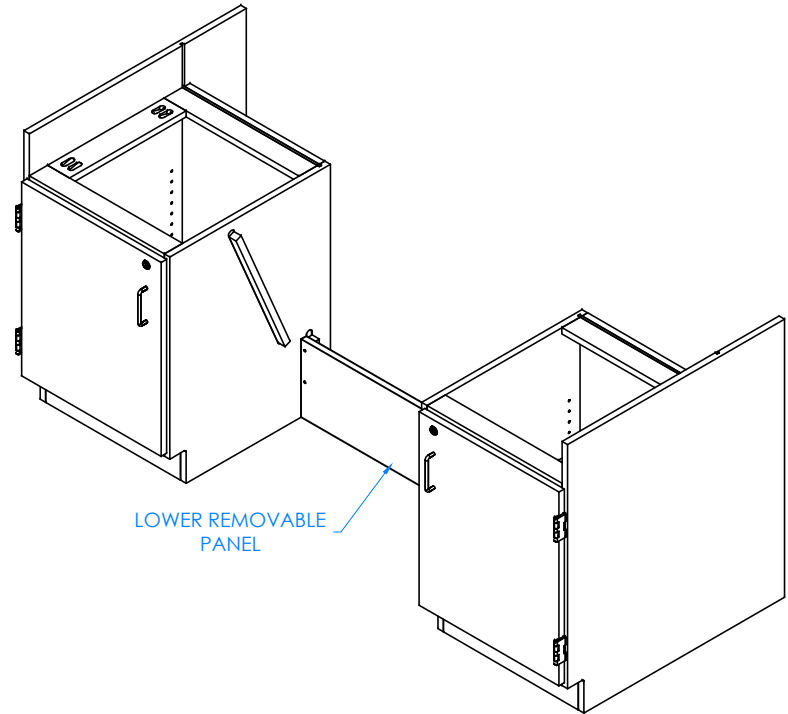
DRAWING NUMBER:	SCALE:	SHEET:	REVISION:
3010 & 3010-ADA SERIES	NTS	4 OF 12	REV A

STEP 2:

- IF YOU HAVE A 3010 UNIT, ATTACH TOEKICK ONTO CLEATS WITH HARDWARE PROVIDED.
- MAKE SURE BOTTOM EDGE OF TOEKICK IS FLUSH WITH BOTTOM EDGE OF CABINETS.
- IF YOU HAVE A 3010-ADA UNIT, ATTACH LOWER REMOVABLE PANEL ONTO SMALLER CLEATS LOCATED IN BACK OF CABINET WITH HARDWARE PROVIDED.
- PRE-DRILL HOLES IN TOEKICK AND CLEATS TO PREVENT CRACKING.



3010 UNIT SHOWN



3010-ADA UNIT SHOWN


NOTE:

1.

ALL DIMENSIONS ARE IN INCHES UNLESS NOTED OTHERWISE	DWN BY:	EMR	DATE DWN:	10/4/19
DECIMALS: X = ± .000	APR BY:		DATE APR:	
XX = ± .020	APR BY:		DATE APR:	
XXX = ± .010	APR BY:		DATE APR:	
ANGLES: = ± 1°	APR BY:		DATE APR:	
CABINET SQUARENESS: = ± .0625	APR BY:		DATE APR:	

CONFIDENTIAL:
ALL DESIGN RIGHTS RESERVED
THE INFORMATION, DATA, DESIGN, AND DRAWINGS EMBODIED IN THIS DOCUMENT AND ALL REPRODUCTIONS THEREOF ARE THE EXCLUSIVE PROPERTY OF DIVERSIFIED WOODCRAFTS, INC.

THESE DOCUMENTS ARE SUPPLIED WITH THE UNDERSTANDING THAT THEY WILL NOT BE DISCLOSED TO THIRD PARTIES WITHOUT WRITTEN CONSENT OF DIVERSIFIED WOODCRAFTS, INC. ANY REPRODUCTION IN PART OR WHOLE WITHOUT WRITTEN CONSENT IS SUBJECT TO LEGAL ACTION.



300 South Krueger Street
Suring, WI 54174
diversifiedwoodcrafts.com

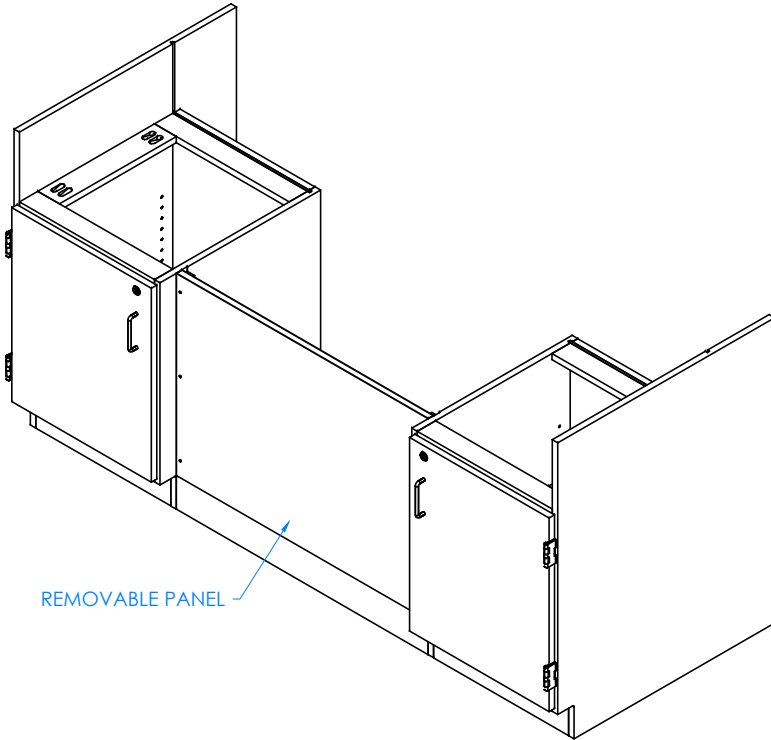
TITLE:
STAINLESS STEEL WALL ART SINK WORKSTATION ASSEMBLY INSTRUCTIONS

A	CREATED DRAWING	10/4/19	EMR	-
REV.	DESCRIPTION	DATE	NAME	ECN NO.
REVISION LEVEL				

DRAWING NUMBER:	SCALE:	SHEET:	REVISION:
3010 & 3010-ADA SERIES	NTS	5 OF 12	REV A

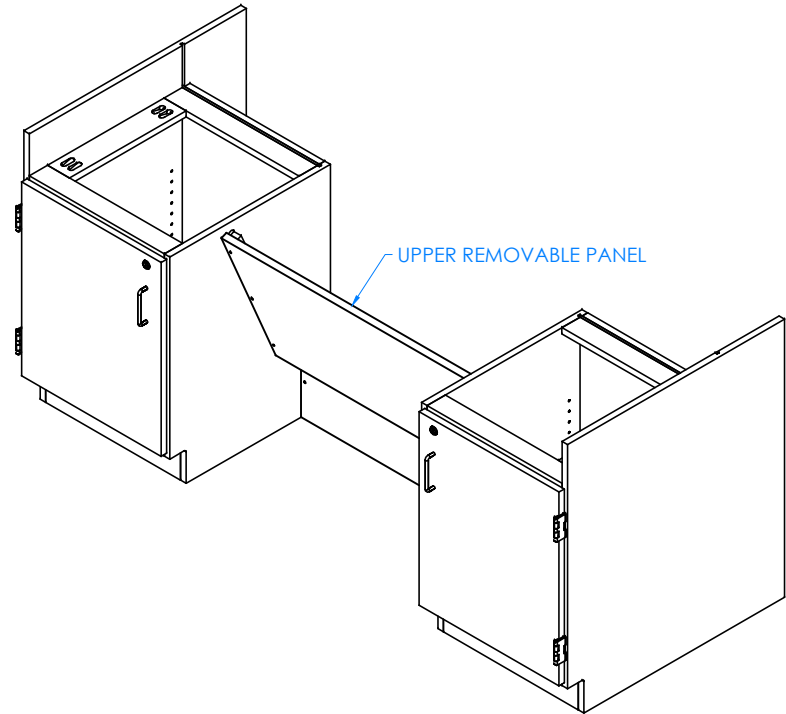
STEP 3:

- IF YOU HAVE A 3010 UNIT, ATTACH REMOVABLE PANEL ONTO CLEATS WITH HARDWARE PROVIDED.
- IF YOU HAVE A 3010-ADA UNIT, ATTACH UPPER REMOVABLE PANEL ONTO ANGLED CLEATS WITH HARDWARE PROVIDED.



REMOVABLE PANEL

3010 UNIT SHOWN



UPPER REMOVABLE PANEL

3010-ADA UNIT SHOWN

NOTE:

1.

ALL DIMENSIONS ARE IN INCHES UNLESS NOTED OTHERWISE	DWN BY:	EMR	DATE DWN:	10/4/19
DECIMALS: $\times = \pm .000$	APR BY:		DATE APR:	
$XX = \pm .020$	APR BY:		DATE APR:	
$XXX = \pm .010$	APR BY:		DATE APR:	
ANGLES: $= \pm 1^{\circ}0'$	APR BY:		DATE APR:	
CABINET SQUARENESS: $= \pm .0625$	APR BY:		DATE APR:	

CONFIDENTIAL:
ALL DESIGN RIGHTS RESERVED
THE INFORMATION, DATA, DESIGN, AND DRAWINGS EMBODIED IN THIS DOCUMENT AND ALL REPRODUCTIONS THEREOF ARE THE EXCLUSIVE PROPERTY OF DIVERSIFIED WOODCRAFTS, INC.

THESE DOCUMENTS ARE SUPPLIED WITH THE UNDERSTANDING THAT THEY WILL NOT BE DISCLOSED TO THIRD PARTIES WITHOUT WRITTEN CONSENT OF DIVERSIFIED WOODCRAFTS, INC. ANY REPRODUCTION IN PART OR WHOLE WITHOUT WRITTEN CONSENT IS SUBJECT TO LEGAL ACTION.

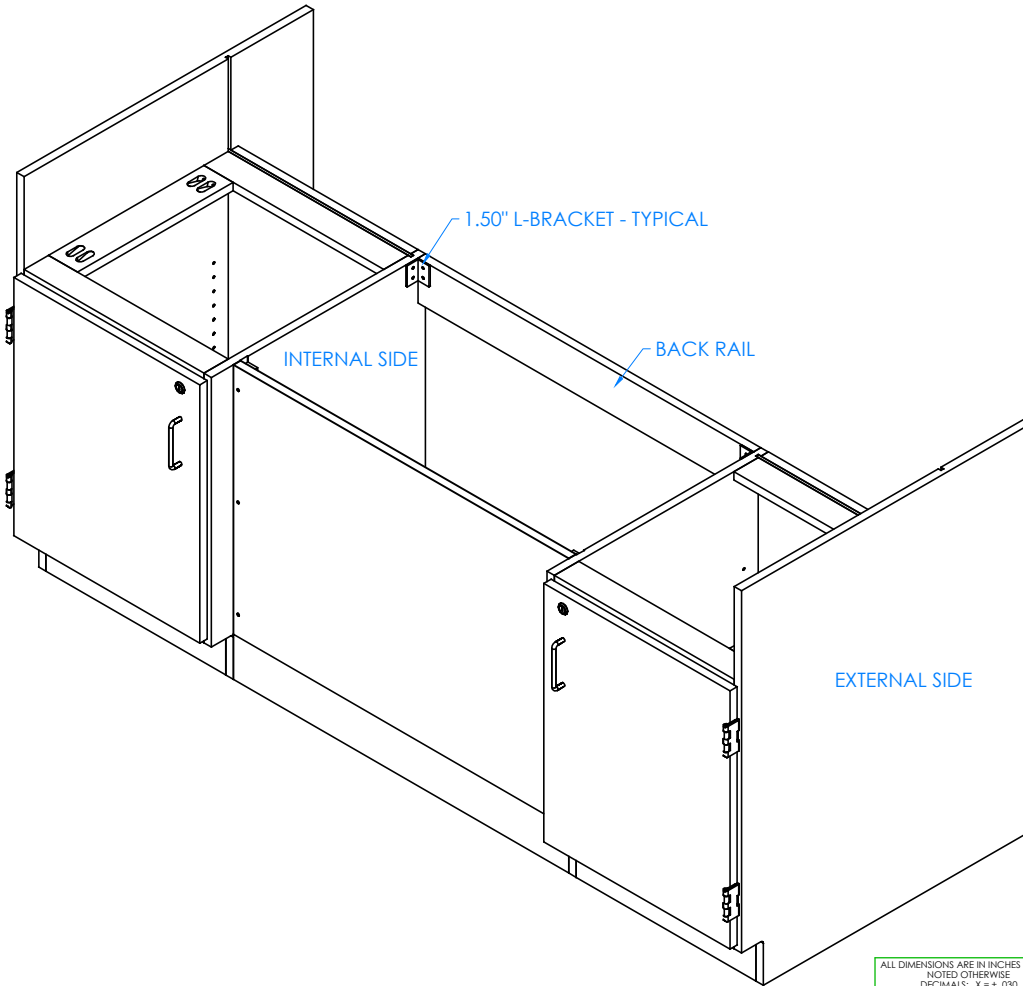


300 South Krueger Street
Suring, WI 54174
diversifiedwoodcrafts.com

TITLE:
STAINLESS STEEL WALL ART SINK WORKSTATION
ASSEMBLY INSTRUCTIONS

REV.	DESCRIPTION	DATE	NAME	ECN NO.
A	CREATED DRAWING	10/4/19	EMR	-
REVISION LEVEL				

DRAWING NUMBER:	SCALE:	SHEET:	REVISION:
3010 & 3010-ADA SERIES	NTS	6 OF 12	REV A



STEP 4:

- POSITION BACK RAIL IN BETWEEN EACH CABINET.
- MAKE SURE BACK EDGE IS FLUSH WITH BACK EDGE OF SIDES AND TOP EDGE IS FLUSH WITH TOP EDGE OF SIDES.
- WITH HELP FROM ANOTHER PERSON , ATTACH THE 1.50" L-BRACKETS ONTO THE BACK RAIL AND INTERNAL SIDES WITH HARDWARE PROVIDED.
- MAKE SURE BRACKETS ARE FLUSH WITH TOP EDGES OF CABINETS.


NOTE:

1.

ALL DIMENSIONS ARE IN INCHES UNLESS NOTED OTHERWISE	DWN BY:	EMR	DATE DWN:	10/4/19
DECIMALS: X = ± .000	APR BY:		DATE APR:	
XX = ± .020	APR BY:		DATE APR:	
XXX = ± .010	APR BY:		DATE APR:	
ANGLES: = ± 1°0'	APR BY:		DATE APR:	
CABINET SQUARENESS: = ± .0625	APR BY:		DATE APR:	

CONFIDENTIAL:
 ALL DESIGN RIGHTS RESERVED
 THE INFORMATION, DATA, DESIGN, AND DRAWINGS EMBODIED IN THIS DOCUMENT AND ALL REPRODUCTIONS THEREOF ARE THE EXCLUSIVE PROPERTY OF DIVERSIFIED WOODCRAFTS, INC.

THESE DOCUMENTS ARE SUPPLIED WITH THE UNDERSTANDING THAT THEY WILL NOT BE DISCLOSED TO THIRD PARTIES WITHOUT WRITTEN CONSENT OF DIVERSIFIED WOODCRAFTS, INC. ANY REPRODUCTION IN PART OR WHOLE WITHOUT WRITTEN CONSENT IS SUBJECT TO LEGAL ACTION.

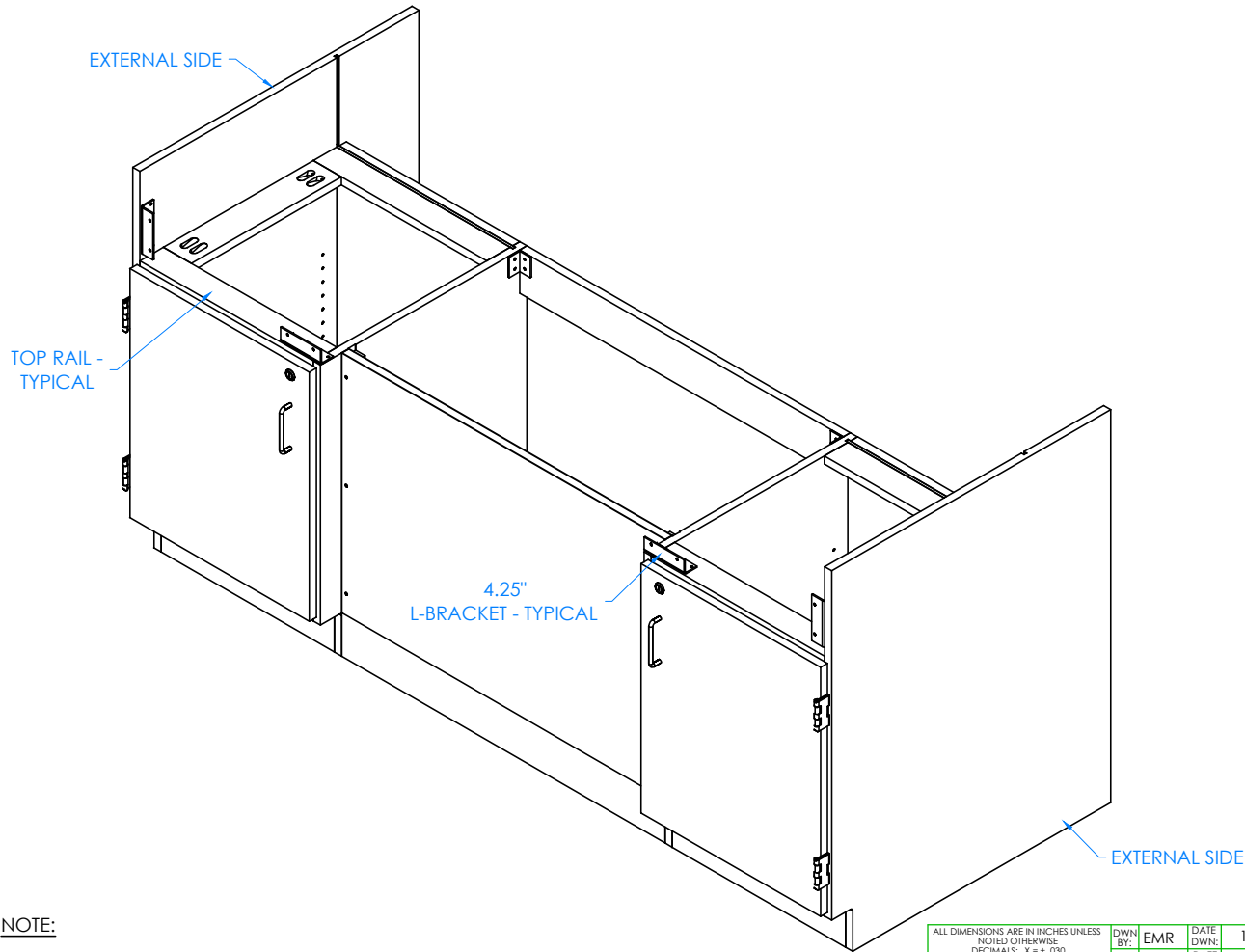


300 South Krueger Street
 Suring, WI 54174
 diversifiedwoodcrafts.com

TITLE:
STAINLESS STEEL WALL ART SINK WORKSTATION ASSEMBLY INSTRUCTIONS

A	CREATED DRAWING	10/4/19	EMR	-
REV.	DESCRIPTION	DATE	NAME	ECN NO.
REVISION LEVEL				

DRAWING NUMBER:	SCALE:	SHEET:	REVISION:
3010 & 3010-ADA SERIES	NTS	7 OF 12	REV A



STEP 5:

- ATTACH THE 4.25" L-BRACKETS TO EXTERNAL SIDES AND TOP RAILS WITH HARDWARE PROVIDED.
- PRE-DRILL HOLES TO PREVENT CRACKING.

NOTE:

1.

ALL DIMENSIONS ARE IN INCHES UNLESS NOTED OTHERWISE	DWN BY:	EMR	DATE DWN:	10/4/19
DECIMALS: X = ± .000	APR BY:		DATE APR:	
XX = ± .020	APR BY:		DATE APR:	
XXX = ± .010	APR BY:		DATE APR:	
ANGLES: = ± 1°	APR BY:		DATE APR:	
CABINET SQUARENESS: = ± .0625	APR BY:		DATE APR:	

CONFIDENTIAL:
ALL DESIGN RIGHTS RESERVED
THE INFORMATION, DATA, DESIGN, AND DRAWINGS EMBODIED IN THIS DOCUMENT AND ALL REPRODUCTIONS THEREOF ARE THE EXCLUSIVE PROPERTY OF DIVERSIFIED WOODCRAFTS, INC.

THESE DOCUMENTS ARE SUPPLIED WITH THE UNDERSTANDING THAT THEY WILL NOT BE DISCLOSED TO THIRD PARTIES WITHOUT WRITTEN CONSENT OF DIVERSIFIED WOODCRAFTS, INC. ANY REPRODUCTION IN PART OR WHOLE WITHOUT WRITTEN CONSENT IS SUBJECT TO LEGAL ACTION.

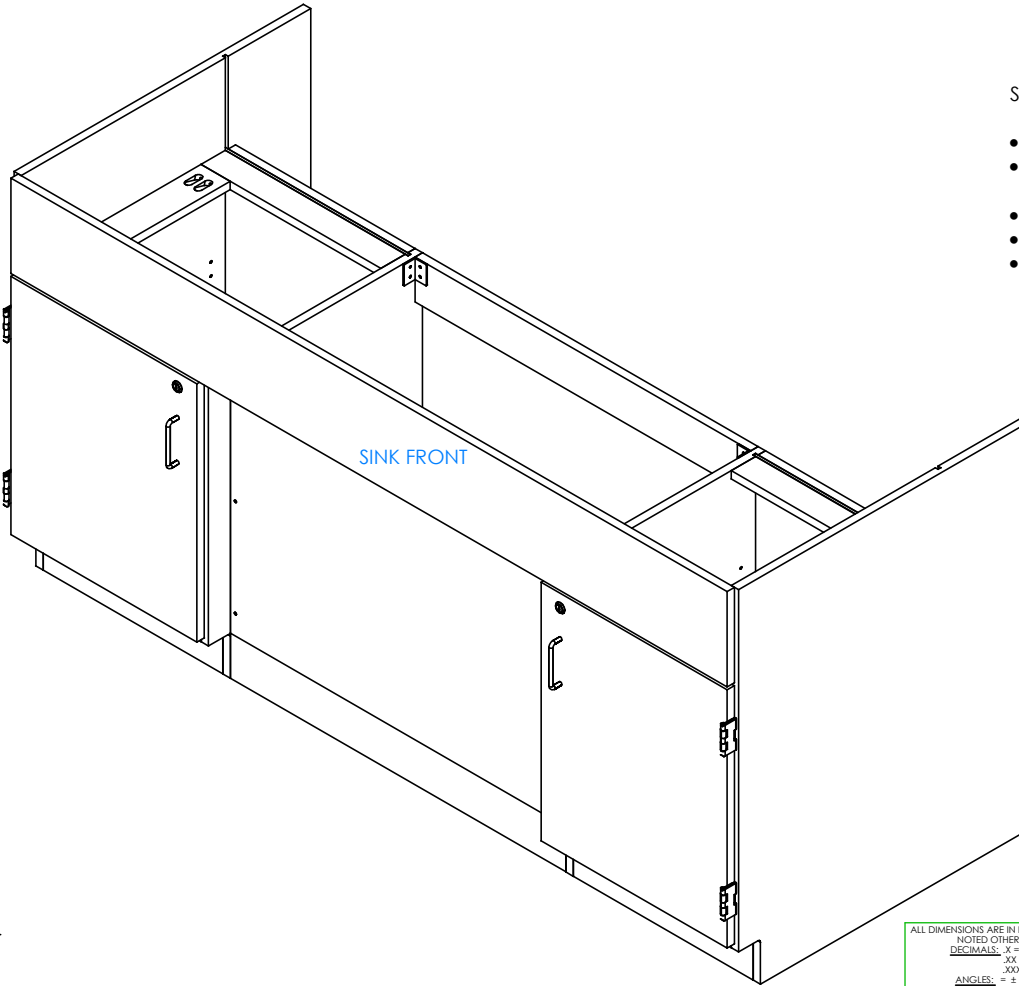


300 South Krueger Street
Suring, WI 54174
diversifiedwoodcrafts.com

TITLE:
**STAINLESS STEEL WALL ART SINK WORKSTATION
ASSEMBLY INSTRUCTIONS**

REV.	DESCRIPTION	DATE	NAME	ECN NO.
A	CREATED DRAWING	10/4/19	EMR	-
REVISION LEVEL				

DRAWING NUMBER:	SCALE:	SHEET:	REVISION:
3010 & 3010-ADA SERIES	NTS	8 OF 12	REV A



STEP 6:

- WITH HELP FROM ANOTHER PERSON, POSITION SINK FRONT UP TO L-BRACKETS.
- MAKE SURE SINK FRONT IS PLACED EVENLY AND IS ALIGNED WITH DOOR FRONTS BELOW.
- TOP EDGE OF SINK FRONT SHOULD BE FLUSH WITH TOP EDGE OF SIDES.
- ATTACH SINK FRONT TO L-BRACKETS WITH HARDWARE PROVIDED.
- PRE-DRILL HOLES IN SINK FRONT TO PREVENT CRACKING.

NOTE:

1.

ALL DIMENSIONS ARE IN INCHES UNLESS NOTED OTHERWISE	DWN BY:	EMR	DATE DWN:	10/4/19
DECIMALS: X = ± .000	APR BY:		DATE APR:	
XX = ± .020	APR BY:		DATE APR:	
XXX = ± .010	APR BY:		DATE APR:	
ANGLES: = ± 1°	APR BY:		DATE APR:	
CABINET SQUARENESS: = ± .0625	APR BY:		DATE APR:	

CONFIDENTIAL:
 ALL DESIGN RIGHTS RESERVED
 THE INFORMATION, DATA, DESIGN, AND DRAWINGS EMBODIED IN THIS DOCUMENT AND ALL REPRODUCTIONS THEREOF ARE THE EXCLUSIVE PROPERTY OF DIVERSIFIED WOODCRAFTS, INC.

THESE DOCUMENTS ARE SUPPLIED WITH THE UNDERSTANDING THAT THEY WILL NOT BE DISCLOSED TO THIRD PARTIES WITHOUT WRITTEN CONSENT OF DIVERSIFIED WOODCRAFTS, INC. ANY REPRODUCTION IN PART OR WHOLE WITHOUT WRITTEN CONSENT IS SUBJECT TO LEGAL ACTION.

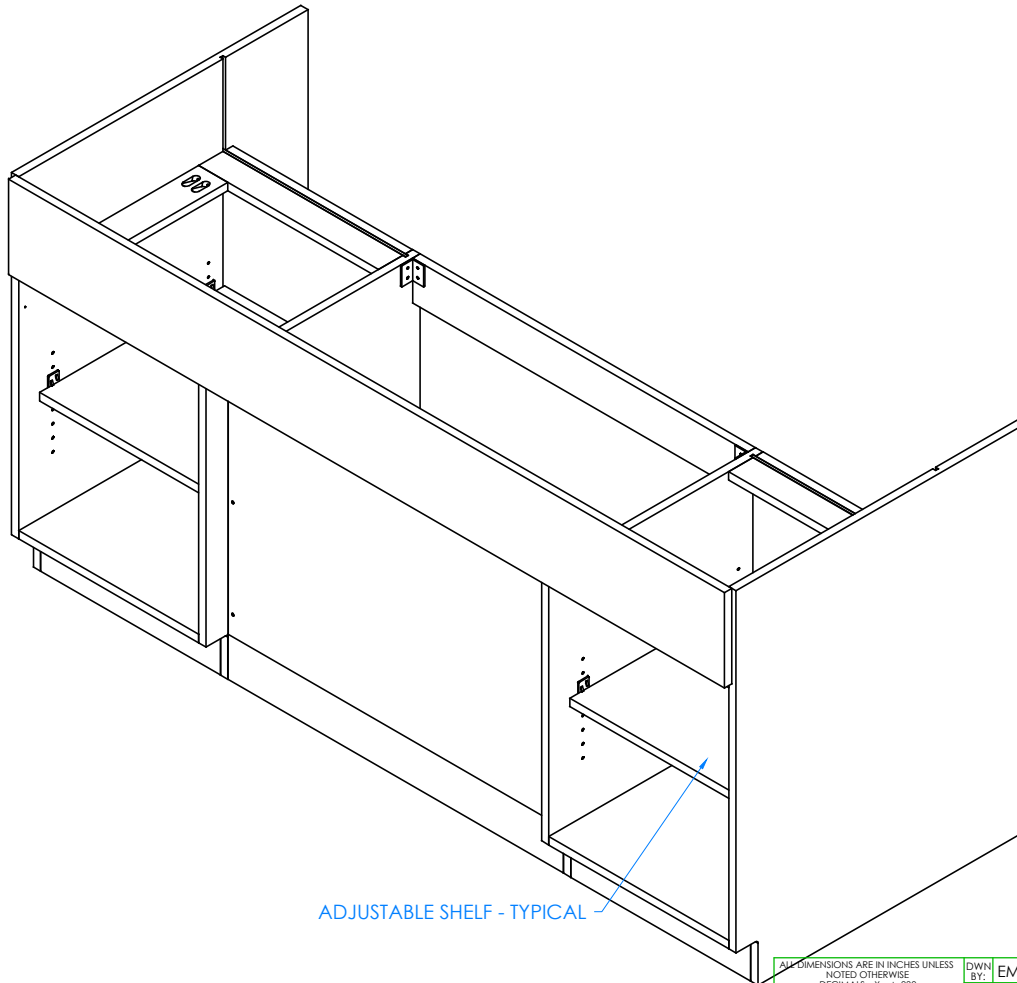


300 South Krueger Street
 Suring, WI 54174
 diversifiedwoodcrafts.com

TITLE:
STAINLESS STEEL WALL ART SINK WORKSTATION ASSEMBLY INSTRUCTIONS

REV.	DESCRIPTION	DATE	NAME	ECN NO.
A	CREATED DRAWING	10/4/19	EMR	-
REVISION LEVEL				

DRAWING NUMBER:	SCALE:	SHEET:	REVISION:
3010 & 3010-ADA SERIES	NTS	9 OF 12	REV A



STEP 7:

- INSERT SHELF CLIPS IN DESIRED LOCATION.
- PLACE SHELVES ON CLIPS, MAKING SURE THEY ARE LEVEL.

NOTE:

1.

DOORS AND HARDWARE REMOVED TO SHOW CLARITY

A	CREATED DRAWING	10/4/19	EMR	-
REV.	DESCRIPTION	DATE	NAME	ECN NO.
REVISION LEVEL				

ALL DIMENSIONS ARE IN INCHES UNLESS NOTED OTHERWISE			
DECIMALS:	X = ± .000	DWN BY:	EMR
	XX = ± .020	DATE DWN:	10/4/19
	XXX = ± .010	APR BY:	
ANGLES:	= ± 1°	DATE APR:	
CABINET SQUARENESS:	= ± .0625	APR BY:	

CONFIDENTIAL:
 ALL DESIGN RIGHTS RESERVED
 THE INFORMATION, DATA, DESIGN, AND DRAWINGS EMBODIED IN THIS DOCUMENT AND ALL REPRODUCTIONS THEREOF ARE THE EXCLUSIVE PROPERTY OF DIVERSIFIED WOODCRAFTS, INC.

THESE DOCUMENTS ARE SUPPLIED WITH THE UNDERSTANDING THAT THEY WILL NOT BE DISCLOSED TO THIRD PARTIES WITHOUT WRITTEN CONSENT OF DIVERSIFIED WOODCRAFTS, INC. ANY REPRODUCTION IN PART OR WHOLE WITHOUT WRITTEN CONSENT IS SUBJECT TO LEGAL ACTION.



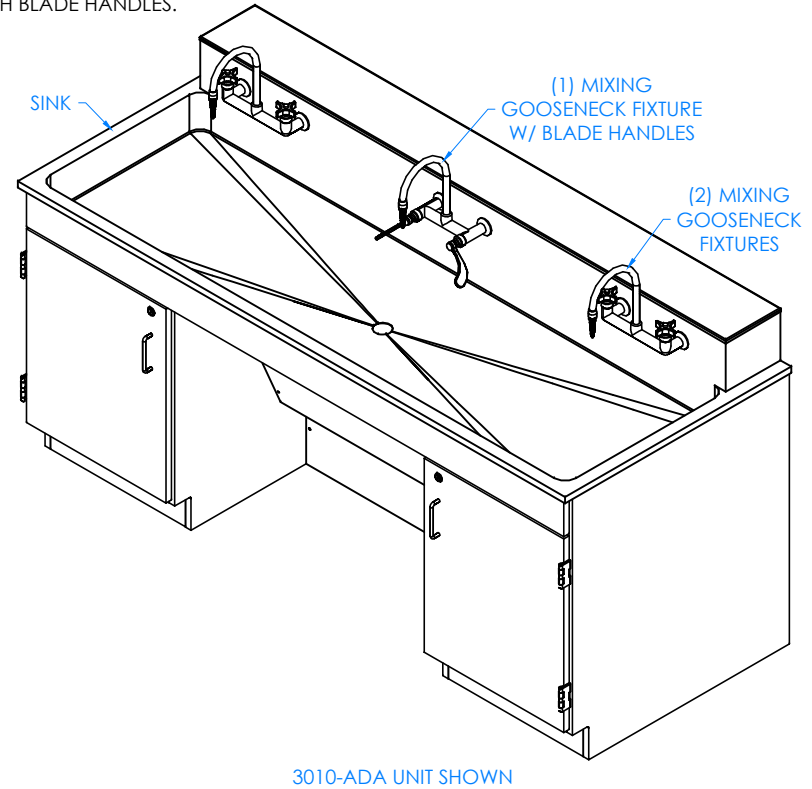
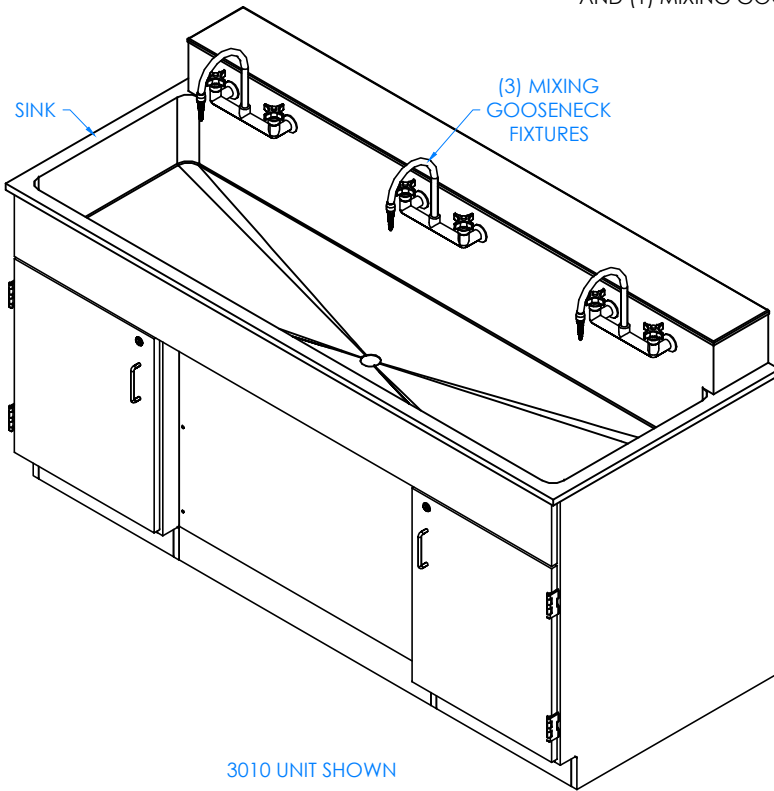
300 South Krueger Street
 Suring, WI 54174
 diversifiedwoodcrafts.com

TITLE:
 STAINLESS STEEL WALL ART SINK WORKSTATION
 ASSEMBLY INSTRUCTIONS

DRAWING NUMBER:	SCALE:	SHEET:	REVISION:
3010 & 3010-ADA SERIES	NTS	10 OF 12	REV A

STEP 8:

- WITH HELP FROM ANOTHER PERSON, PLACE SINK OVER WORKSTATION.
- ATTACH SINK TO CABINET FRAME WITH PROPER HARDWARE.
- INSTALL FIXTURES IN HOLES PROVIDED IN SINK.
- IF YOU HAVE A 3010 WORKSTATION, THERE WILL BE (3) MIXING GOOSENECK FIXTURES.
- IF YOU HAVE A 3010-ADA WORKSTATION, THERE WILL BE (2) MIXING GOOSENECK FIXTURES AND (1) MIXING GOOSENECK FIXTURE WITH BLADE HANDLES.



NOTE:

1. ALL PLUMBING NEEDS TO BE DONE BY A LICENSED PLUMBER PER LOCAL CODE.

ALL DIMENSIONS ARE IN INCHES UNLESS NOTED OTHERWISE	DWN BY:	EMR	DATE DWN:	10/4/19
DECIMALS: X = ± .000	APR BY:		DATE APR:	
XX = ± .020	APR BY:		DATE APR:	
XXX = ± .010	APR BY:		DATE APR:	
ANGLES: = ± 1°0'	APR BY:		DATE APR:	
CABINET SQUARENESS: = ± .0625	APR BY:		DATE APR:	

CONFIDENTIAL:
ALL DESIGN RIGHTS RESERVED
THE INFORMATION, DATA, DESIGN, AND DRAWINGS EMBODIED IN THIS DOCUMENT AND ALL REPRODUCTIONS THEREOF ARE THE EXCLUSIVE PROPERTY OF DIVERSIFIED WOODCRAFTS, INC.

THESE DOCUMENTS ARE SUPPLIED WITH THE UNDERSTANDING THAT THEY WILL NOT BE DISCLOSED TO THIRD PARTIES WITHOUT WRITTEN CONSENT OF DIVERSIFIED WOODCRAFTS, INC. ANY REPRODUCTION IN PART OR WHOLE WITHOUT WRITTEN CONSENT IS SUBJECT TO LEGAL ACTION.

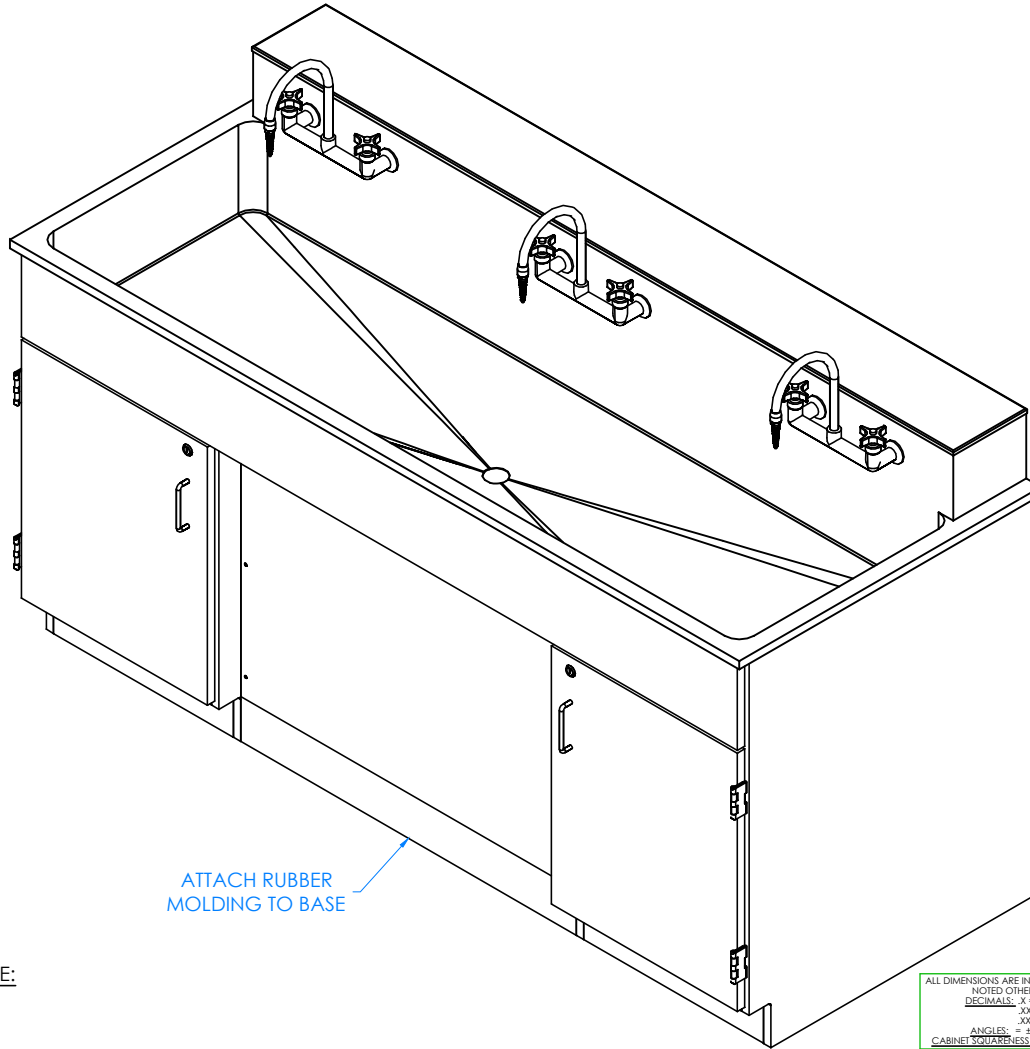


300 South Krueger Street
Suring, WI 54174
diversifiedwoodcrafts.com

TITLE:
STAINLESS STEEL WALL ART SINK WORKSTATION
ASSEMBLY INSTRUCTIONS

REV.	DESCRIPTION	DATE	NAME	ECN NO.
A	CREATED DRAWING	10/4/19	EMR	-
REVISION LEVEL				

DRAWING NUMBER:	SCALE:	SHEET:	REVISION:
3010 & 3010-ADA SERIES	NTS	11 OF 12	REV A



STEP 9:

- ATTACH RUBBER MOLDING TO BASE USING CONTACT CEMENT.
- SCREW STAINLESS STEEL CORNER BRACKETS ON EACH CORNER OVER BASE MOLDING WITH HARDWARE PROVIDED.

NOTE:

1.

ATTACH RUBBER MOLDING TO BASE

COMPLETE UNIT SHOWN

REV.	DESCRIPTION	DATE	NAME	ECN NO.
A	CREATED DRAWING	10/4/19	EMR	-
REVISION LEVEL				

ALL DIMENSIONS ARE IN INCHES UNLESS NOTED OTHERWISE	DWN BY:	EMR	DATE DWN:	10/4/19
DECIMALS: $\times = \pm .000$	APR BY:		DATE APR:	
$XX = \pm .020$	APR BY:		DATE APR:	
$XXX = \pm .010$	APR BY:		DATE APR:	
ANGLES: $= \pm 1^{\circ}0'$	APR BY:		DATE APR:	
CABINET SQUARENESS: $= \pm .0625$	APR BY:		DATE APR:	

CONFIDENTIAL:
ALL DESIGN RIGHTS RESERVED
THE INFORMATION, DATA, DESIGN, AND DRAWINGS EMBODIED IN THIS DOCUMENT AND ALL REPRODUCTIONS THEREOF ARE THE EXCLUSIVE PROPERTY OF DIVERSIFIED WOODCRAFTS, INC.

THESE DOCUMENTS ARE SUPPLIED WITH THE UNDERSTANDING THAT THEY WILL NOT BE DISCLOSED TO THIRD PARTIES WITHOUT WRITTEN CONSENT OF DIVERSIFIED WOODCRAFTS, INC. ANY REPRODUCTION IN PART OR WHOLE WITHOUT WRITTEN CONSENT IS SUBJECT TO LEGAL ACTION.



300 South Krueger Street
Suring, WI 54174
diversifiedwoodcrafts.com

TITLE:
STAINLESS STEEL WALL ART SINK WORKSTATION
ASSEMBLY INSTRUCTIONS

DRAWING NUMBER:	SCALE:	SHEET:	REVISION:
3010 & 3010-ADA SERIES	NTS	12 OF 12	REV A