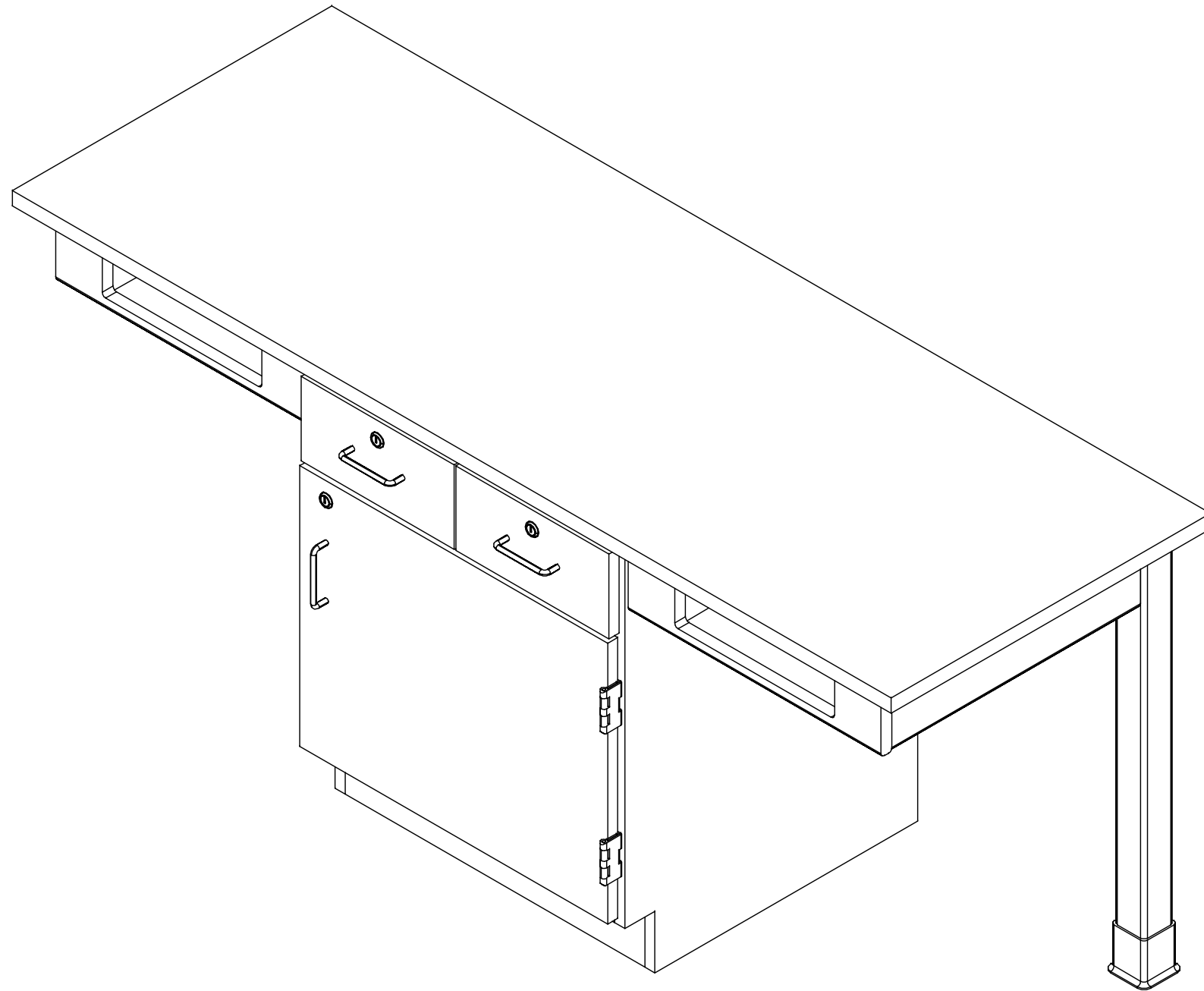


STORAGE CABINET TABLES-SINGLE

2100, C2100, 2200, & C2200 SERIES (OAK OR MAPLE)
ASSEMBLY INSTRUCTIONS



NOTE:

1. MODEL VIEWS MAY NOT REPRESENT EXACT MODEL PURCHASED

ALL DIMENSIONS ARE IN INCHES UNLESS NOTED OTHERWISE	DWN BY:	EMR	DATE DWN:	3/15/16
DECIMALS: .X = ± .030	APR BY:		DATE APR:	
.XX = ± .020	APR BY:		DATE APR:	
.XXX = ± .010	APR BY:		DATE APR:	
ANGLES: = ± 1°				
CABINET SQUARENESS = ± .0625				

CONFIDENTIAL:
ALL DESIGN RIGHTS RESERVED.
THE INFORMATION, DATA, DESIGN, AND DRAWINGS EMBODIED IN THIS DOCUMENT AND ALL REPRODUCTIONS THEREOF ARE THE EXCLUSIVE PROPERTY OF DIVERSIFIED WOODCRAFTS, INC.

THESE DOCUMENTS ARE SUPPLIED WITH THE UNDERSTANDING THAT THEY WILL NOT BE DISCLOSED TO THIRD PARTIES WITHOUT WRITTEN CONSENT OF DIVERSIFIED WOODCRAFTS, INC. ANY REPRODUCTION IN PART OR WHOLE WITHOUT WRITTEN CONSENT IS SUBJECT TO LEGAL ACTION.



300 South Krueger Street
Suring, WI 54174
diversifiedwoodcrafts.com

TITLE:
STORAGE CABINET TABLES-SINGLE
ASSEMBLY INSTRUCTIONS

REV.	DESCRIPTION	DATE	NAME	ECN No.
C	TOP SCREWS UPDATED	4/15/2024	RJM	N/A
A	CREATED DRAWING	3/15/16	EMR	N/A
REVISION LEVEL				

DRAWING NUMBER:	SCALE:	SHEET:	REVISION:
2100, C2100, 2200, & C2200 SERIES	NTS	1 OF 11	REV C

TOOLS REQUIRED

1/2" WRENCH
1/2" SOCKET AND TORQUE WRENCH - OPTIONAL
CONTACT CEMENT
SCREW DRIVER
C-CLAMPS
SHIM STOCK (IF NEEDED)

ASSEMBLY COMPONENTS

ITEMS INCLUDED	PART #	PART DESCRIPTION	QTY
CABINET ASSEMBLY	VARIES	CABINET STYLES VARY WITH CHOICE OF TABLE STYLE	1
APRON ASSEMBLY	N/A	APRON ASSEMBLY (FACTORY ASSEMBLED)	2
TOP	VARIES	TOP (STYLE VARIES)	1
SCREWS - WING TO TOP	100641	SCREW,#8X1 3/4" QUAD RD WASH HD	12
SCREWS - CABINET TO TOP	100597	SCREW,#8X1 1/2" PHILLIPS/SQ DRIVE	4
LEGS	VARIES	LEG,(OAK OR MAPLE) 2.25X2.25X28.25	2
LEG HARDWARE	520001	LEG HARDWARE KIT, 1 LEG	2
LEG BOOT	100076	LEG BOOT,BLK,RUBBER	2
RUBBER BASE MOLDING	100283	RUBBER BASE MOLDING(SOLD BY FOOT)	7.5
STAINLESS STEEL CORNERS	100057	CORNERS-STAINLESS STEEL,BASE	4
SCREWS - BASE	100064	SCREW,#6X 1/2 PTH SMS SS SCREW	16
L-BRACKET	100355	BRACKET,RAIL 1.25X 1.25X 4.25	4
SCREWS - L-BRACKET	100649	SCREW,#8X3/4 PHIL TRUSS HEAD SMS	16
SILICONE	100711	SILICONE FOR TOPS	1

NOTE:

- COMPONENTS VARY WITH STYLE OF WORKSTATION PURCHASED.
- **X**** INDICATES ITEMS ONLY USED FOR THE WORKSTATIONS WITH EPOXY OR PHENOLIC TOPS.

REV.	DESCRIPTION	DATE	NAME	ECN No.
C	TOP SCREWS UPDATED	4/15/2024	RJM	N/A
A	CREATED DRAWING	3/15/16	EMR	N/A
REVISION LEVEL				

ALL DIMENSIONS ARE IN INCHES UNLESS NOTED OTHERWISE DECIMALS: .X = ± .030 .XX = ± .020 .XXX = ± .010 ANGLES: = ± 1° CABINET SQUARENESS = ± .0625	DWN BY: EMR APR BY: APR BY:	DATE DWN: 3/15/16 DATE APR: DATE APR:
---	-----------------------------------	---

CONFIDENTIAL:
ALL DESIGN RIGHTS RESERVED
THE INFORMATION, DATA, DESIGN, AND DRAWINGS EMBODIED IN THIS DOCUMENT AND ALL REPRODUCTIONS THEREOF ARE THE EXCLUSIVE PROPERTY OF DIVERSIFIED WOODCRAFTS, INC.

THESE DOCUMENTS ARE SUPPLIED WITH THE UNDERSTANDING THAT THEY WILL NOT BE DISCLOSED TO THIRD PARTIES WITHOUT WRITTEN CONSENT OF DIVERSIFIED WOODCRAFTS, INC. ANY REPRODUCTION IN PART OR WHOLE WITHOUT WRITTEN CONSENT IS SUBJECT TO LEGAL ACTION.



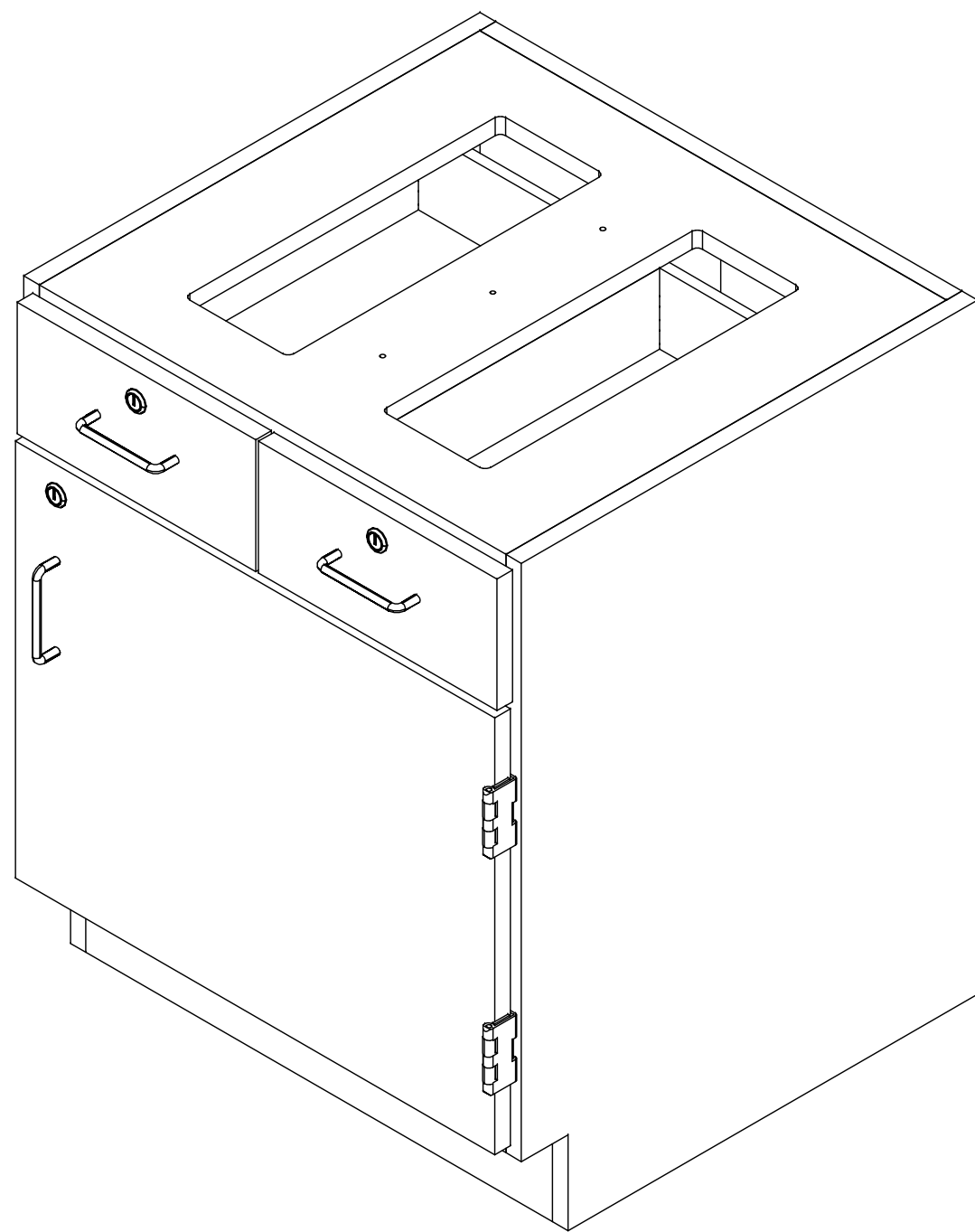
300 South Krueger Street
Suring, WI 54174
diversifiedwoodcrafts.com

TITLE:
STORAGE CABINET TABLES-SINGLE TOOLS AND ASSEMBLY COMPONENTS

DRAWING NUMBER: 2100, C2100, 2200, & C2200 SERIES	SCALE: NTS	SHEET: 2 OF 11	REVISION: REV C
--	---------------	-------------------	--------------------

HARDWARE REQUIRED FOR STEP

QTY	DESCRIPTION	PART NUMBER
1	CABINET ASSEMBLY	VARIES



STEP 1:

- a. POSITION UNIT IN DESIRED LOCATION.
- b. LEVEL CABINET.
- c. ANCHOR TO FLOOR.

****NOTE****
 CABINET MUST BE LEVELED OR
 DOORS AND DRAWERS MAY NOT
 OPEN OR CLOSE CORRECTLY

NOTE:

1.

ALL DIMENSIONS ARE IN INCHES UNLESS NOTED OTHERWISE DECIMALS: .X = ± .030 .XX = ± .020 .XXX = ± .010 ANGLES: = ± 1° CABINET SQUARENESS = ± .0625	DWN BY: EMR APR BY: APR BY:	DATE DWN: 3/15/16 DATE APR: DATE APR:
---	-----------------------------------	---



300 South Krueger Street
 Suring, WI 54174
 diversifiedwoodcrafts.com

CONFIDENTIAL:
 ALL DESIGN RIGHTS RESERVED.
 THE INFORMATION, DATA, DESIGN, AND DRAWINGS EMBODIED
 IN THIS DOCUMENT AND ALL REPRODUCTIONS THEREOF ARE
 THE EXCLUSIVE PROPERTY OF DIVERSIFIED WOODCRAFTS, INC.

TITLE:
**STORAGE CABINET TABLES-SINGLE
 ASSEMBLY INSTRUCTIONS**

THESE DOCUMENTS ARE SUPPLIED WITH THE UNDERSTANDING
 THAT THEY WILL NOT BE DISCLOSED TO THIRD PARTIES WITHOUT
 WRITTEN CONSENT OF DIVERSIFIED WOODCRAFTS, INC. ANY
 REPRODUCTION IN PART OR WHOLE WITHOUT WRITTEN
 CONSENT IS SUBJECT TO LEGAL ACTION.

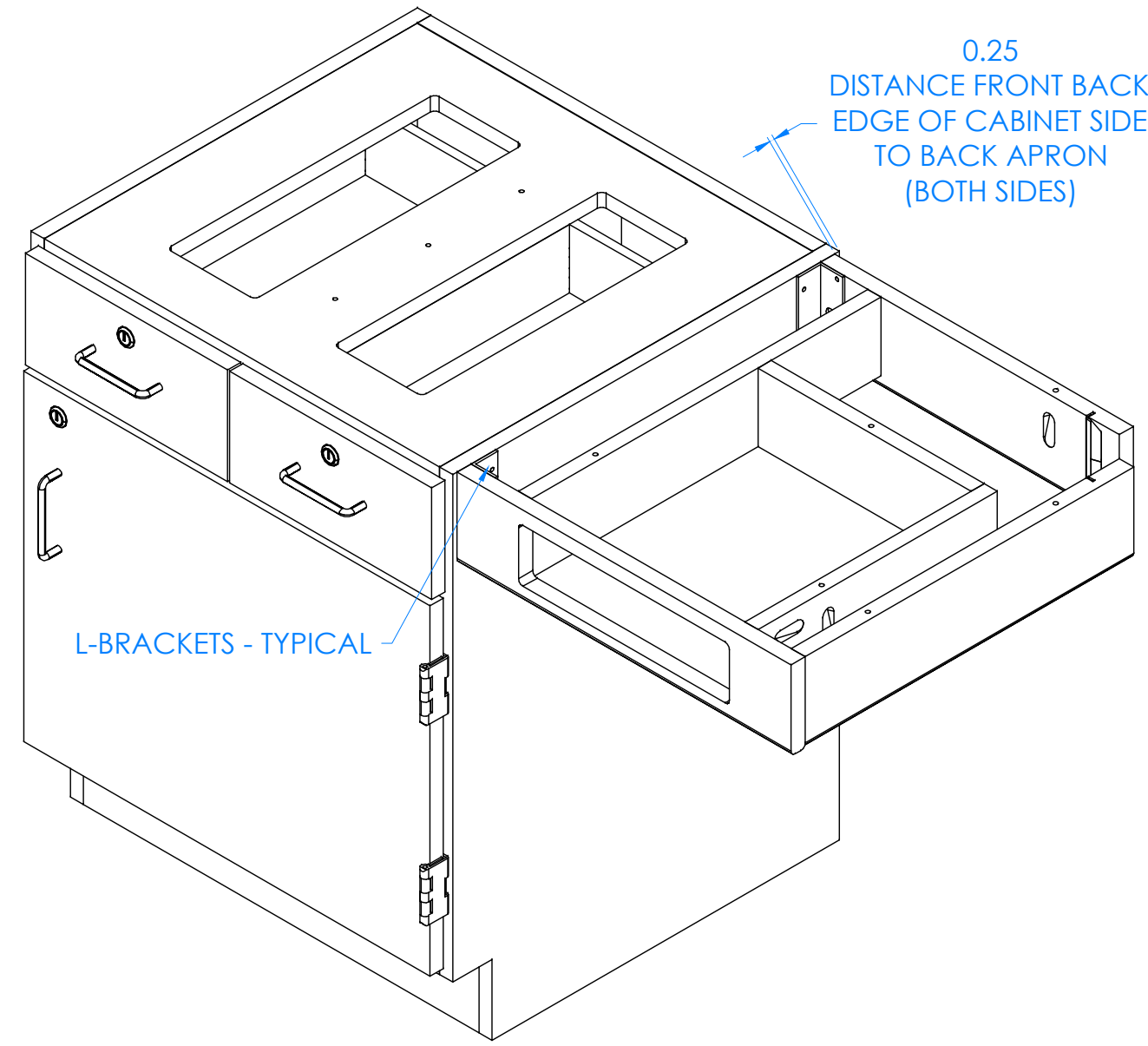
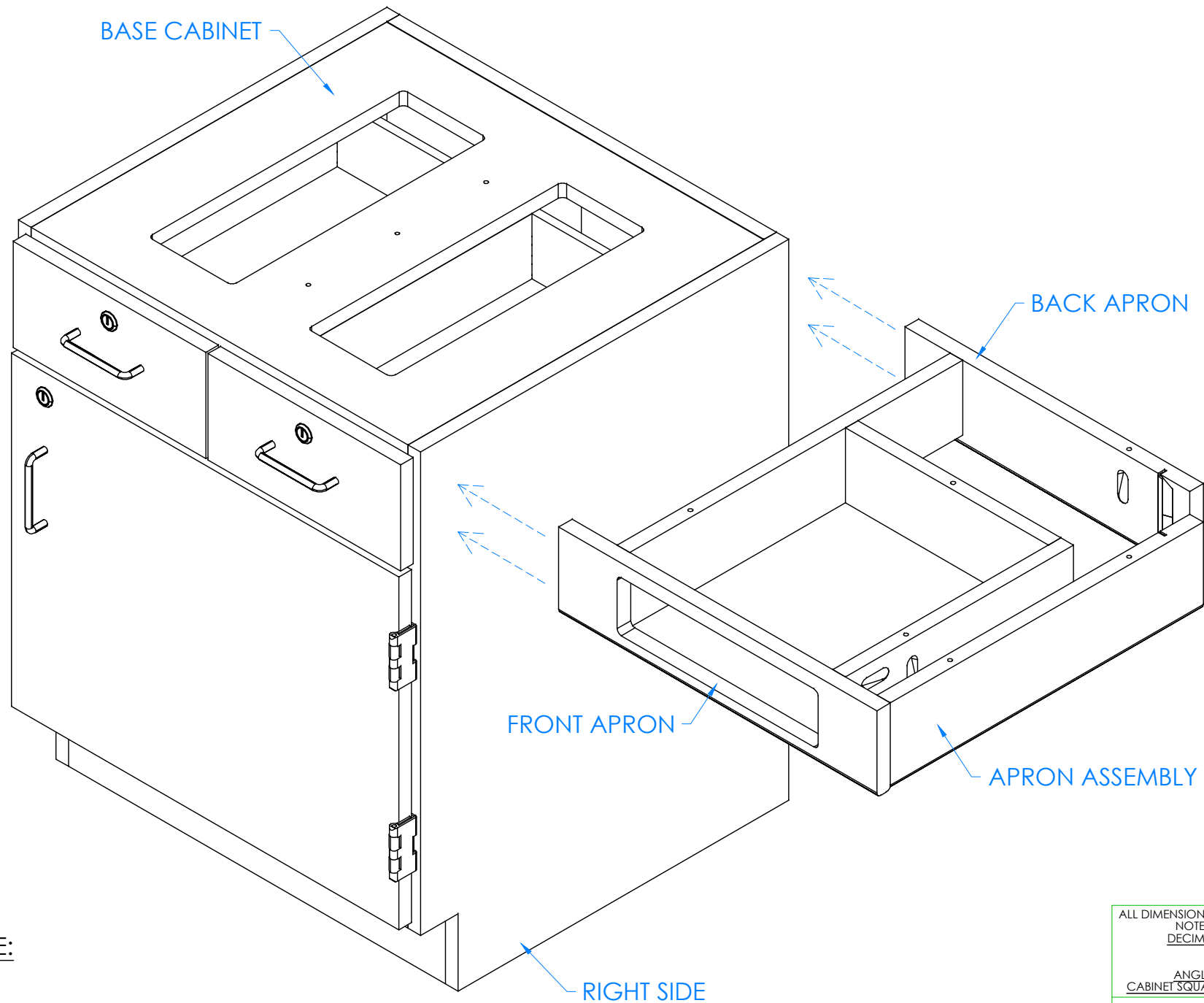
DRAWING NUMBER: 2100, C2100, 2200, & C2200 SERIES	SCALE: NTS	SHEET: 3 OF 11	REVISION: REV C
--	---------------	-------------------	--------------------

REV.	DESCRIPTION	DATE	NAME	ECN No.
C	TOP SCREWS UPDATED	4/15/2024	RJM	N/A
A	CREATED DRAWING	3/15/16	EMR	N/A
REVISION LEVEL				

STEP 2:

- a. WITH HELP FROM ANOTHER PERSON, POSITION RIGHT APRON ASSEMBLY UP TO RIGHT SIDE OF CABINET SO IT IS CENTERED CORRECTLY AND FLUSH WITH TOP OF BASE CABINET.
- b. PLACE L-BRACKETS IN CORRECT LOCATION ON APRON ASSEMBLY AND RIGHT SIDE (SHOULD BE FLUSH WITH TOP EDGE OF CABINET ALONG WITH FRONT AND BACK EDGES OF APRONS).
- c. MARK ON SIDE OF CABINET WHERE L-BRACKETS NEED TO BE ATTACHED.
- d. SET APRON ASSEMBLY AND L-BRACKETS ASIDE.
- e. REPEAT STEP FOR LEFT SIDE.

HARDWARE REQUIRED FOR STEP		
QTY	DESCRIPTION	PART NUMBER
2	APRON ASSEMBLY	N/A
4	L-BRACKET	100355



NOTE:
1.

ALL DIMENSIONS ARE IN INCHES UNLESS NOTED OTHERWISE	DWN BY: EMR	DATE DWN: 3/15/16
DECIMALS: .X = ± .030	APR BY:	DATE APR:
.XX = ± .020	APR BY:	DATE APR:
.XXX = ± .010	APR BY:	DATE APR:
ANGLES: = ± 1°		
CABINET SQUARENESS = ± .0625		


DIVERSIFIED SPACES™
 300 South Krueger Street
 Suring, WI 54174
diversifiedwoodcrafts.com

CONFIDENTIAL:
 ALL DESIGN RIGHTS RESERVED.
 THE INFORMATION, DATA, DESIGN, AND DRAWINGS EMBODIED IN THIS DOCUMENT AND ALL REPRODUCTIONS THEREOF ARE THE EXCLUSIVE PROPERTY OF DIVERSIFIED WOODCRAFTS, INC.

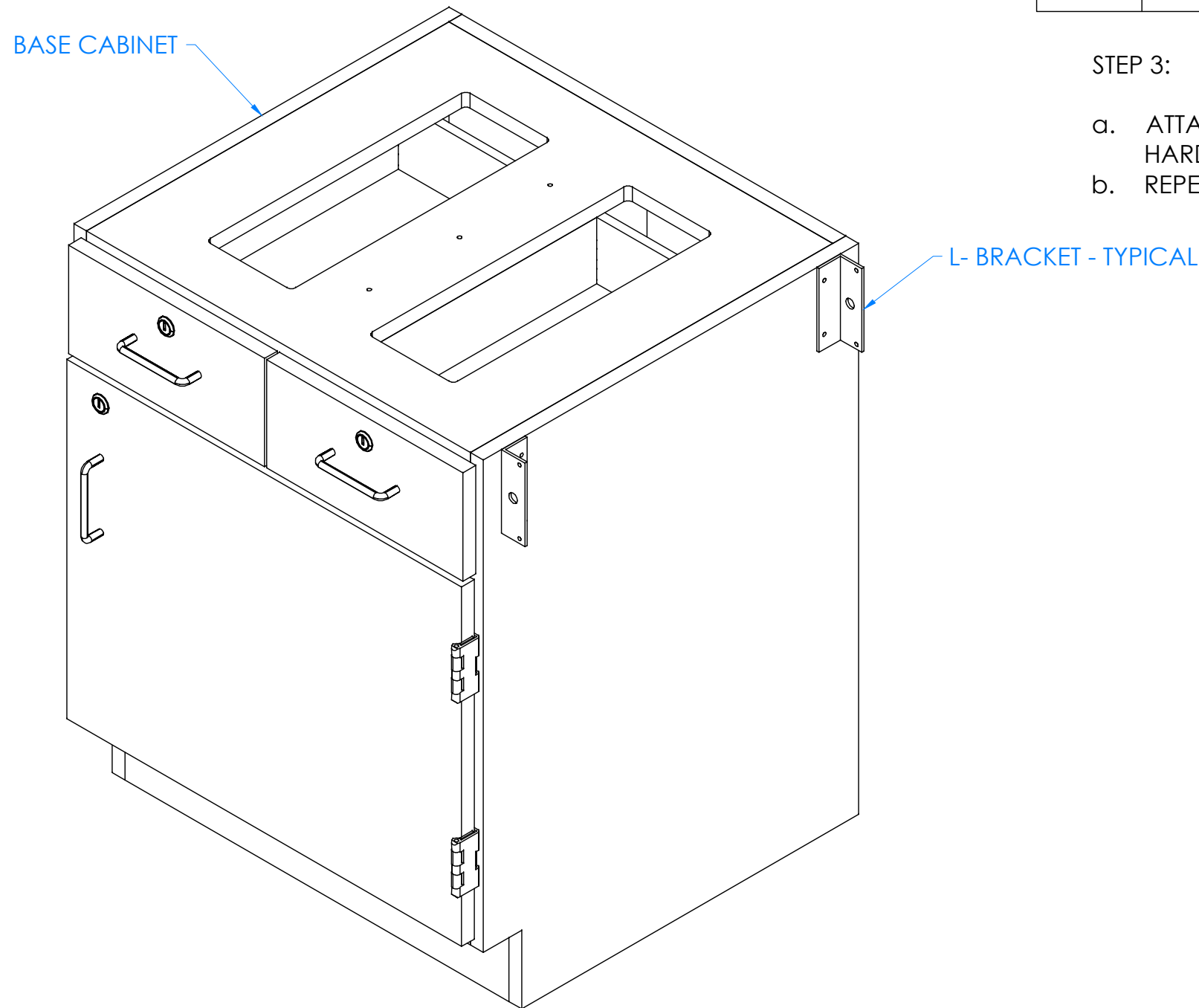
 THESE DOCUMENTS ARE SUPPLIED WITH THE UNDERSTANDING THAT THEY WILL NOT BE DISCLOSED TO THIRD PARTIES WITHOUT WRITTEN CONSENT OF DIVERSIFIED WOODCRAFTS, INC. ANY REPRODUCTION IN PART OR WHOLE WITHOUT WRITTEN CONSENT IS SUBJECT TO LEGAL ACTION.

TITLE: STORAGE CABINET TABLES-SINGLE ASSEMBLY INSTRUCTIONS		
DRAWING NUMBER: 2100, C2100, 2200, & C2200 SERIES	SCALE: NTS	SHEET: 4 OF 11
		REVISION: REV C

REV.	DESCRIPTION	DATE	NAME	ECN No.
C	TOP SCREWS UPDATED	4/15/2024	RJM	N/A
A	CREATED DRAWING	3/15/16	EMR	N/A
REVISION LEVEL				

HARDWARE REQUIRED FOR STEP

QTY	DESCRIPTION	PART NUMBER
4	L-BRACKET	100355
8	SCREWS - L-BRACKET	100649



STEP 3:

- a. ATTACH L-BRACKETS TO RIGHT SIDE OF CABINET WITH HARDWARE PROVIDED.
- b. REPEAT STEP FOR LEFT SIDE.

NOTE:

1.

ALL DIMENSIONS ARE IN INCHES UNLESS NOTED OTHERWISE DECIMALS: .X = ± .030 .XX = ± .020 .XXX = ± .010 ANGLES: = ± 1° CABINET SQUARENESS = ± .0625	DWN BY:	EMR	DATE DWN:	3/15/16
	APR BY:		DATE APR:	
	APR BY:		DATE APR:	
	APR BY:		DATE APR:	



300 South Krueger Street
 Suring, WI 54174
 diversifiedwoodcrafts.com

CONFIDENTIAL:
 ALL DESIGN RIGHTS RESERVED.
 THE INFORMATION, DATA, DESIGN, AND DRAWINGS EMBODIED IN THIS DOCUMENT AND ALL REPRODUCTIONS THEREOF ARE THE EXCLUSIVE PROPERTY OF DIVERSIFIED WOODCRAFTS, INC.

TITLE:
STORAGE CABINET TABLES-SINGLE ASSEMBLY INSTRUCTIONS

THESE DOCUMENTS ARE SUPPLIED WITH THE UNDERSTANDING THAT THEY WILL NOT BE DISCLOSED TO THIRD PARTIES WITHOUT WRITTEN CONSENT OF DIVERSIFIED WOODCRAFTS, INC. ANY REPRODUCTION IN PART OR WHOLE WITHOUT WRITTEN CONSENT IS SUBJECT TO LEGAL ACTION.

DRAWING NUMBER:	SCALE:	SHEET:	REVISION:
2100, C2100, 2200, & C2200 SERIES	NTS	5 OF 11	REV C

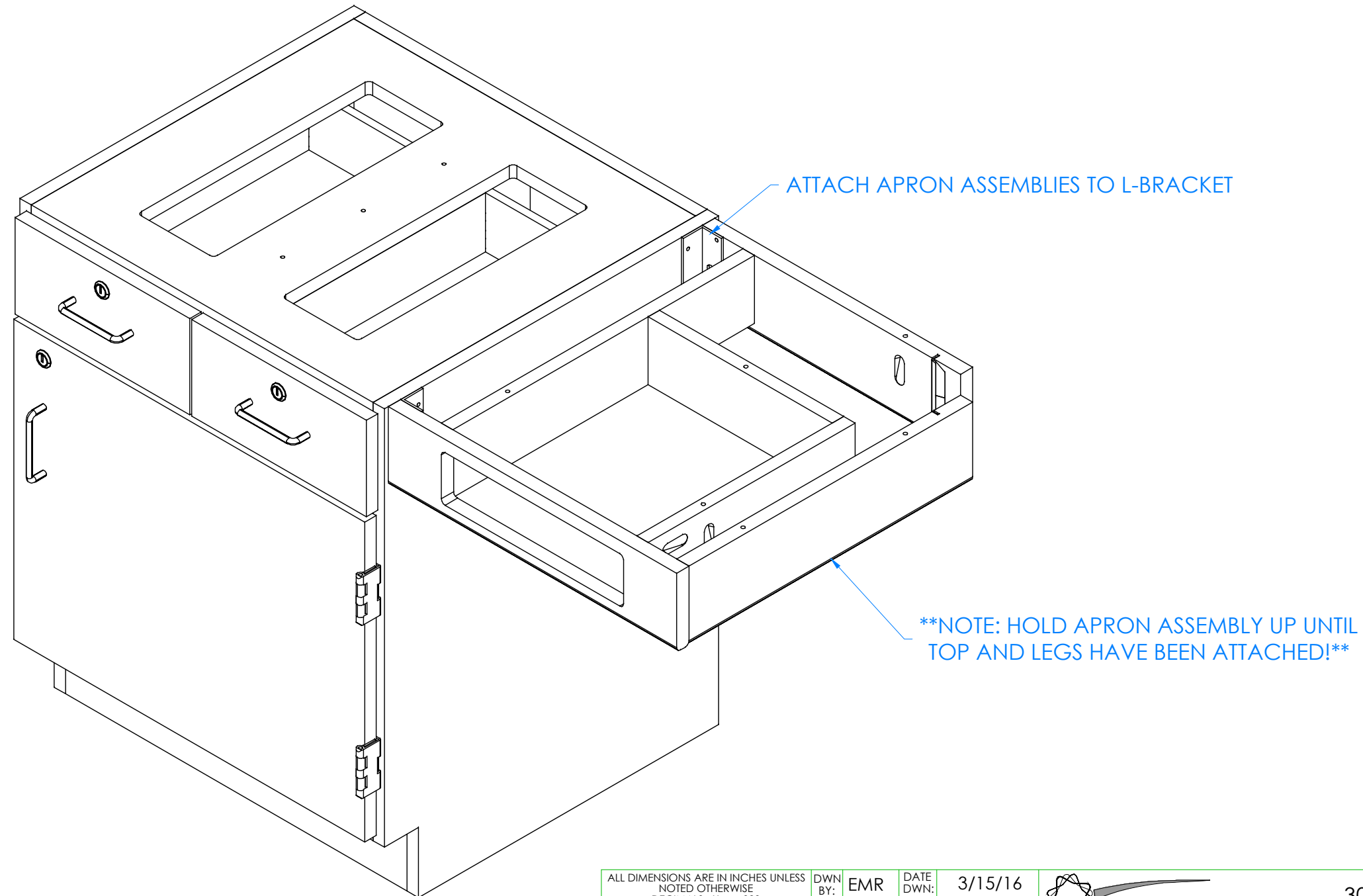
REV.	DESCRIPTION	DATE	NAME	ECN No.
C	TOP SCREWS UPDATED	4/15/2024	RJM	N/A
A	CREATED DRAWING	3/15/16	EMR	N/A
REVISION LEVEL				

STEP 4:

- a. WITH HELP FROM ANOTHER PERSON, PLACE RIGHT APRON ASSEMBLY UP TO SIDE AND ATTACH TO L-BRACKETS WITH REMAINING SCREWS PROVIDED.
- b. SUPPORT APRON ASSEMBLY UNTIL LEGS AND TOP ARE SECURE. IT IS NOT STRONG ENOUGH TO WITHSTAND WEIGHT UNTIL TOP AND LEGS ARE ATTACHED!
- c. REPEAT STEP FOR LEFT SIDE.

HARDWARE REQUIRED FOR STEP

QTY	DESCRIPTION	PART NUMBER
2	APRON ASSEMBLY	N/A
8	SCREWS - L-BRACKET	100649



NOTE:

1.

ALL DIMENSIONS ARE IN INCHES UNLESS NOTED OTHERWISE DECIMALS: .X = ± .030 .XX = ± .020 .XXX = ± .010 ANGLES: = ± 1° CABINET SQUARENESS = ± .0625	DWN BY: EMR APR BY: APR BY:	DATE DWN: 3/15/16 DATE APR: DATE APR:
---	-----------------------------------	---



300 South Krueger Street
Suring, WI 54174
diversifiedwoodcrafts.com

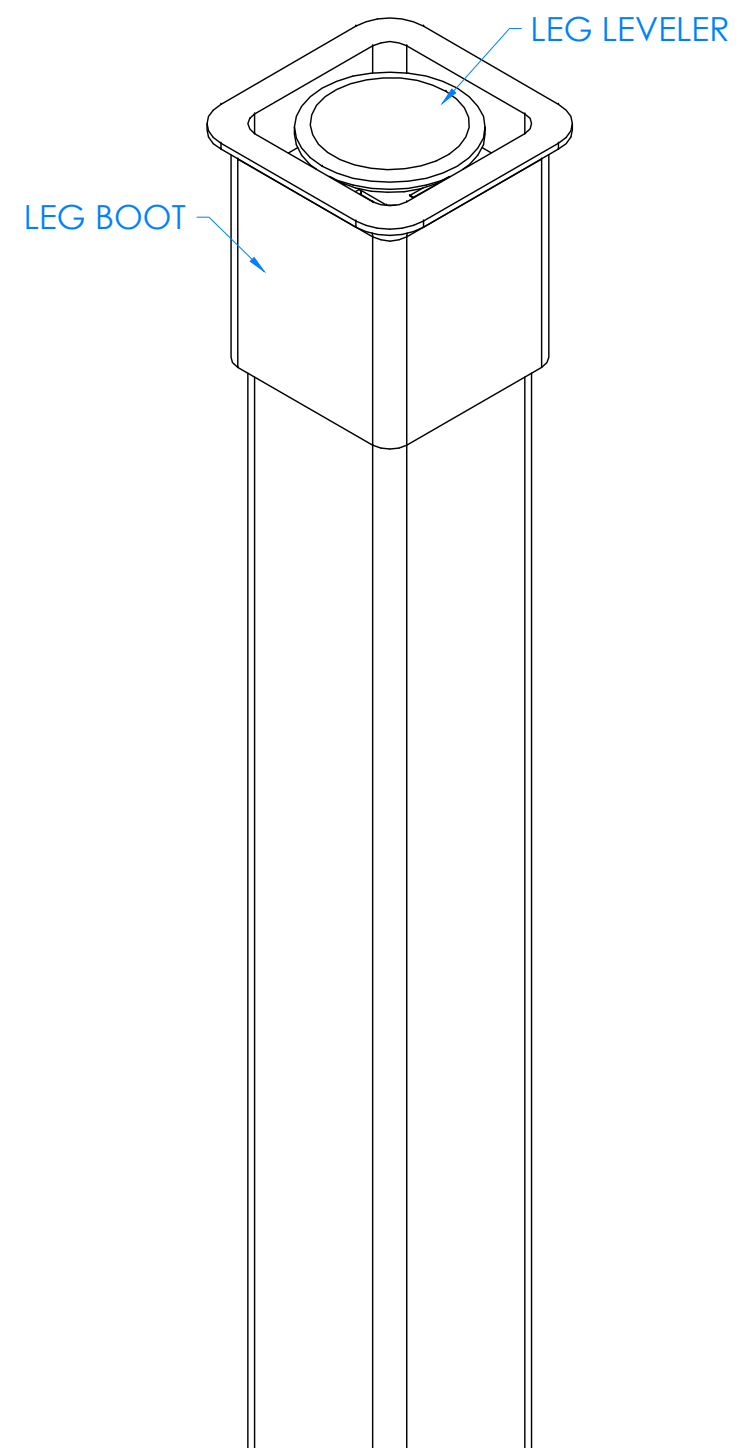
CONFIDENTIAL:
ALL DESIGN RIGHTS RESERVED
THE INFORMATION, DATA, DESIGN, AND DRAWINGS EMBODIED IN THIS DOCUMENT AND ALL REPRODUCTIONS THEREOF ARE THE EXCLUSIVE PROPERTY OF DIVERSIFIED WOODCRAFTS, INC.

TITLE:
STORAGE CABINET TABLES-SINGLE
ASSEMBLY INSTRUCTIONS

THESE DOCUMENTS ARE SUPPLIED WITH THE UNDERSTANDING THAT THEY WILL NOT BE DISCLOSED TO THIRD PARTIES WITHOUT WRITTEN CONSENT OF DIVERSIFIED WOODCRAFTS, INC. ANY REPRODUCTION IN PART OR WHOLE WITHOUT WRITTEN CONSENT IS SUBJECT TO LEGAL ACTION.

DRAWING NUMBER: 2100, C2100, 2200, & C2200 SERIES	SCALE: NTS	SHEET: 6 OF 11	REVISION: REV C
--	---------------	-------------------	--------------------

REV.	DESCRIPTION	DATE	NAME	ECN No.
C	TOP SCREWS UPDATED	4/15/2024	RJM	N/A
A	CREATED DRAWING	3/15/16	EMR	N/A
REVISION LEVEL				



CLOSE UP OF LEG LEVELER AND LEG BOOT ASSEMBLY

HARDWARE REQUIRED FOR STEP		
QTY	DESCRIPTION	PART NUMBER
2	LEGS	VARIABLES
2	LEG HARDWARE	520001
2	LEG BOOT	100076

STEP 5:

- a. SLIDE LEG BOOTS ONTO LEGS WITH FLARED END TOWARD BOTTOM OF LEGS.
- b. SCREW LEG LEVELERS INTO T-NUT ON BOTTOM OF LEGS.

NOTE:

1.

ALL DIMENSIONS ARE IN INCHES UNLESS NOTED OTHERWISE
 DECIMALS: .X = ± .030
 .XX = ± .020
 .XXX = ± .010
 ANGLES: = ± 1°
 CABINET SQUARENESS = ± .0625

DWN BY:	EMR	DATE DWN:	3/15/16
APR BY:		DATE APR:	
APR BY:		DATE APR:	

CONFIDENTIAL:
 ALL DESIGN RIGHTS RESERVED
 THE INFORMATION, DATA, DESIGN, AND DRAWINGS EMBODIED IN THIS DOCUMENT AND ALL REPRODUCTIONS THEREOF ARE THE EXCLUSIVE PROPERTY OF DIVERSIFIED WOODCRAFTS, INC.

THESE DOCUMENTS ARE SUPPLIED WITH THE UNDERSTANDING THAT THEY WILL NOT BE DISCLOSED TO THIRD PARTIES WITHOUT WRITTEN CONSENT OF DIVERSIFIED WOODCRAFTS, INC. ANY REPRODUCTION IN PART OR WHOLE WITHOUT WRITTEN CONSENT IS SUBJECT TO LEGAL ACTION.



300 South Krueger Street
 Suring, WI 54174
 diversifiedwoodcrafts.com

TITLE:
 STORAGE CABINET TABLES-SINGLE
 ASSEMBLY INSTRUCTIONS

DRAWING NUMBER:	SCALE:	SHEET:	REVISION:
2100, C2100, 2200, & C2200 SERIES	NTS	7 OF 11	REV C

REV.	DESCRIPTION	DATE	NAME	ECN No.
C	TOP SCREWS UPDATED	4/15/2024	RJM	N/A
A	CREATED DRAWING	3/15/16	EMR	N/A
REVISION LEVEL				

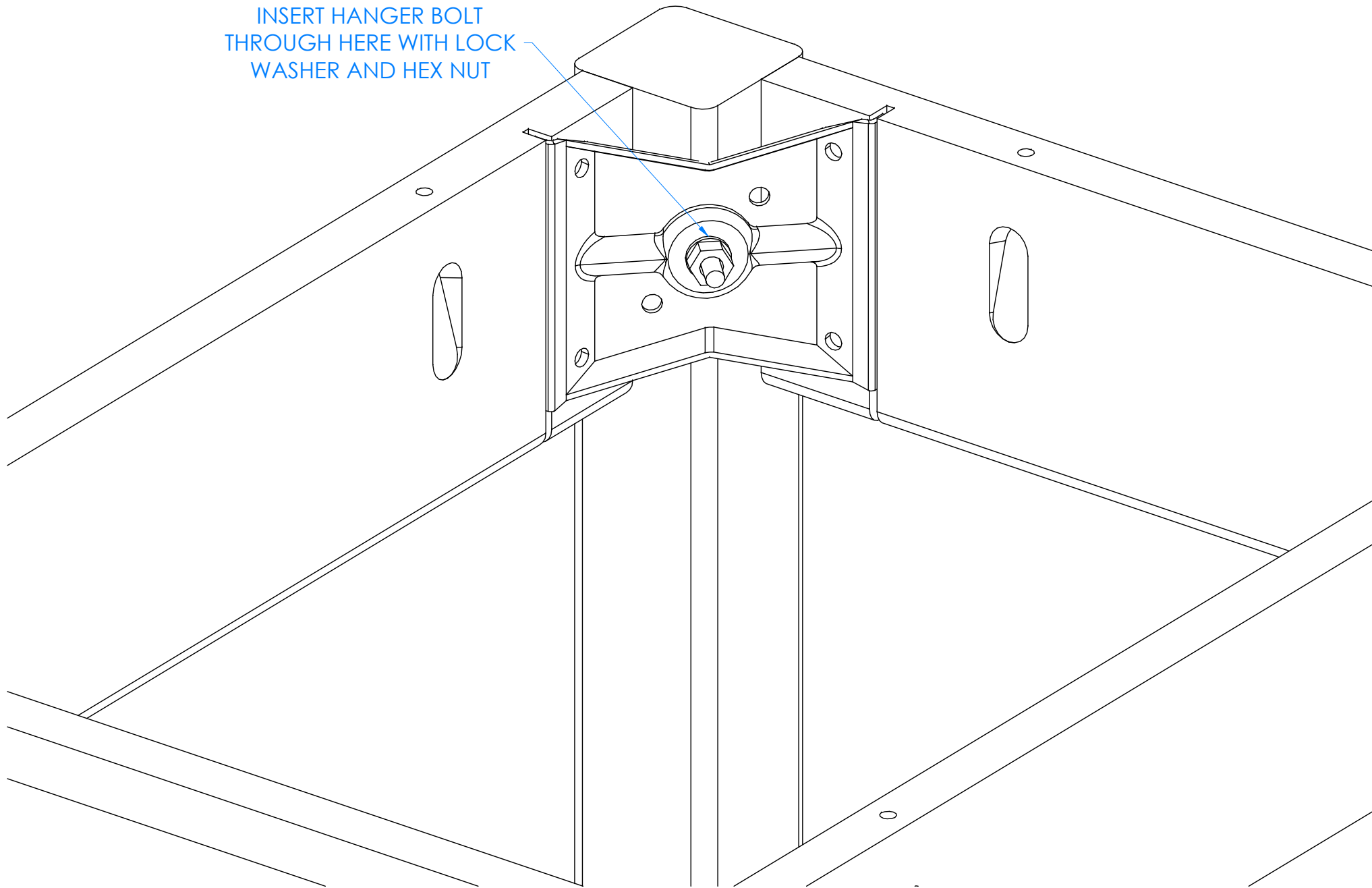
HARDWARE REQUIRED FOR STEP

QTY	DESCRIPTION	PART NUMBER
2	LEG HARDWARE	520001

STEP 6:

- a. INSERT HANGER BOLT ON ONE LEG THROUGH THE CORNER BRACKET AND INSERT LOCK WASHER AND HEX NUT.
- b. TIGHTEN NUT USING A 1/2" WRENCH OR 1/2" SOCKET AND TORQUE WRENCH, TO A MINIMUM OF 12FT LBS BUT NOT TO EXCEED 17FT LBS.
- c. REPEAT STEP FOR OTHER LEG.
- d. DO NOT APPLY PRESSURE TO APRON ASSEMBLIES AT THIS TIME. THEY ARE NOT STRONG ENOUGH TO WITHSTAND WEIGHT UNTIL TOP IS ATTACHED.

INSERT HANGER BOLT THROUGH HERE WITH LOCK WASHER AND HEX NUT



CLOSE UP OF CORNER BRACKET ASSEMBLY
(INTERNAL COMPONENTS REMOVED TO SHOW CLARITY)

NOTE:

1.

ALL DIMENSIONS ARE IN INCHES UNLESS NOTED OTHERWISE DECIMALS: .X = ± .030 .XX = ± .020 .XXX = ± .010 ANGLES: = ± 1° CABINET SQUARENESS = ± .0625	DWN BY: EMR APR BY: APR BY:	DATE DWN: 3/15/16 DATE APR: DATE APR:
---	-----------------------------------	---



300 South Krueger Street
Suring, WI 54174
diversifiedwoodcrafts.com

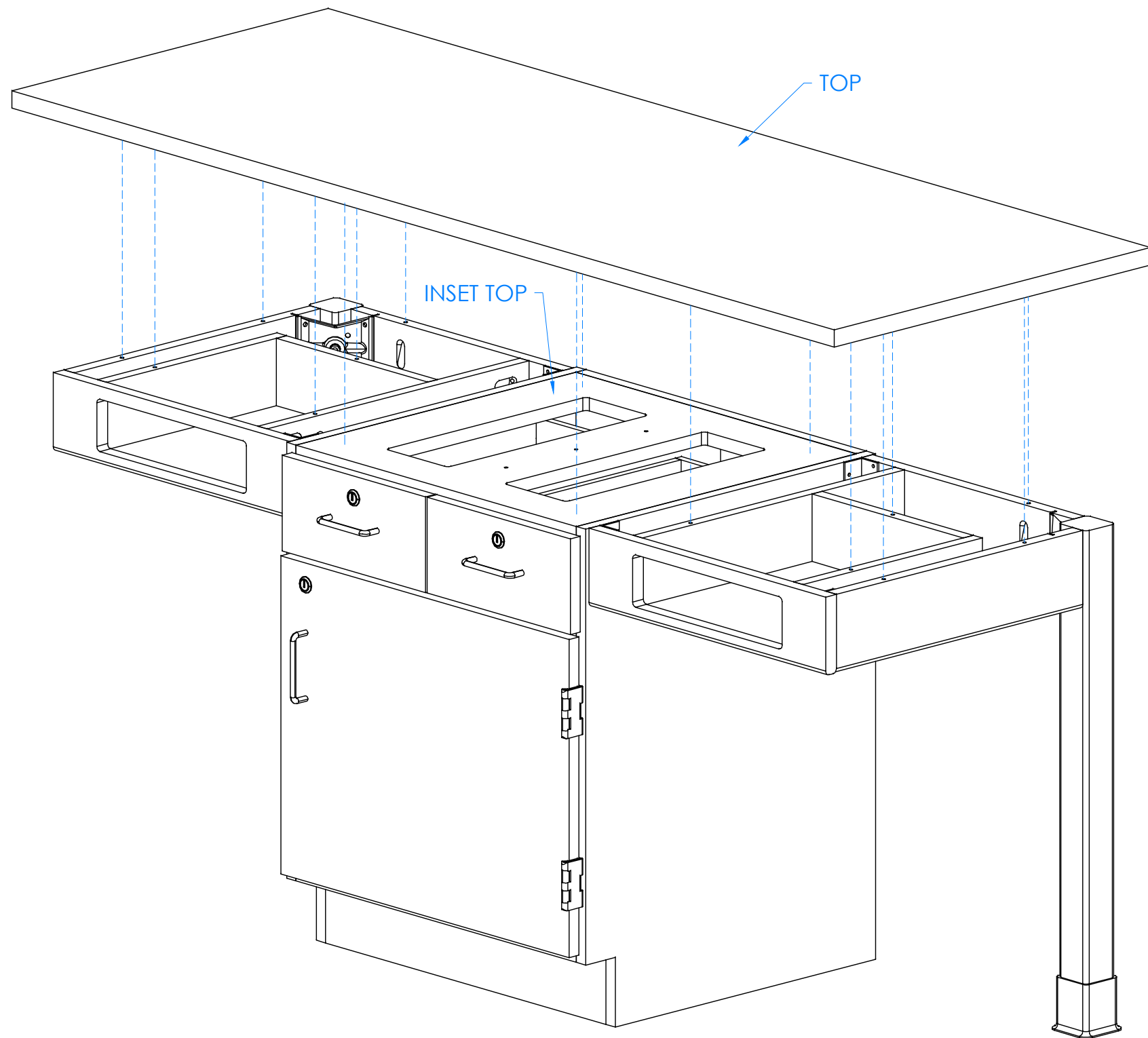
CONFIDENTIAL:
ALL DESIGN RIGHTS RESERVED
THE INFORMATION, DATA, DESIGN, AND DRAWINGS EMBODIED IN THIS DOCUMENT AND ALL REPRODUCTIONS THEREOF ARE THE EXCLUSIVE PROPERTY OF DIVERSIFIED WOODCRAFTS, INC.

TITLE:
STORAGE CABINET TABLES-SINGLE
ASSEMBLY INSTRUCTIONS

THESE DOCUMENTS ARE SUPPLIED WITH THE UNDERSTANDING THAT THEY WILL NOT BE DISCLOSED TO THIRD PARTIES WITHOUT WRITTEN CONSENT OF DIVERSIFIED WOODCRAFTS, INC. ANY REPRODUCTION IN PART OR WHOLE WITHOUT WRITTEN CONSENT IS SUBJECT TO LEGAL ACTION.

DRAWING NUMBER: 2100, C2100, 2200, & C2200 SERIES	SCALE: NTS	SHEET: 8 OF 11	REVISION: REV C
--	---------------	-------------------	--------------------

REV.	DESCRIPTION	DATE	NAME	ECN No.
C	TOP SCREWS UPDATED	4/15/2024	RJM	N/A
A	CREATED DRAWING	3/15/16	EMR	N/A
REVISION LEVEL				



HARDWARE REQUIRED FOR STEP

QTY	DESCRIPTION	PART NUMBER
1	TOP	VARIES
12	SCREWS - WING TO TOP	100641
4	SCREWS - CABINET TO TOP	100597

STEP 7:

- a. ADJUST LEG LEVELERS TO LEVEL TABLE.
- b. IF YOU HAVE A PHENOLIC OR EPOXY TOP, SKIP TO STEP 8.
- c. SET TOP ON UNIT AND ADJUST FOR PROPER OVERHANG (2" ON SIDES AND 1" ON FRONT AND BACK).
- d. ATTACH TOP WITH HARDWARE PROVIDED BY GOING INSIDE CABINET AND SCREWING UP THROUGH INSET TOP AND POCKET HOLES LOCATED ON EACH APRON ASSEMBLY.
- e. MAKE SURE SCREWS ARE TIGHT AND TOP IS SECURE.

NOTE:

1.

ALL DIMENSIONS ARE IN INCHES UNLESS NOTED OTHERWISE DECIMALS: .X = ± .030 .XX = ± .020 .XXX = ± .010 ANGLES: = ± 1° CABINET SQUARENESS = ± .0625	DWN BY:	EMR	DATE DWN:	3/15/16
	APR BY:		DATE APR:	
	APR BY:		DATE APR:	
	APR BY:		DATE APR:	



300 South Krueger Street
 Suring, WI 54174
 diversifiedwoodcrafts.com

CONFIDENTIAL:
 ALL DESIGN RIGHTS RESERVED.
 THE INFORMATION, DATA, DESIGN, AND DRAWINGS EMBODIED IN THIS DOCUMENT AND ALL REPRODUCTIONS THEREOF ARE THE EXCLUSIVE PROPERTY OF DIVERSIFIED WOODCRAFTS, INC.

TITLE:
STORAGE CABINET TABLES-SINGLE ASSEMBLY INSTRUCTIONS

THESE DOCUMENTS ARE SUPPLIED WITH THE UNDERSTANDING THAT THEY WILL NOT BE DISCLOSED TO THIRD PARTIES WITHOUT WRITTEN CONSENT OF DIVERSIFIED WOODCRAFTS, INC. ANY REPRODUCTION IN PART OR WHOLE WITHOUT WRITTEN CONSENT IS SUBJECT TO LEGAL ACTION.

DRAWING NUMBER:	SCALE:	SHEET:	REVISION:
2100, C2100, 2200, & C2200 SERIES	NTS	9 OF 11	REV C

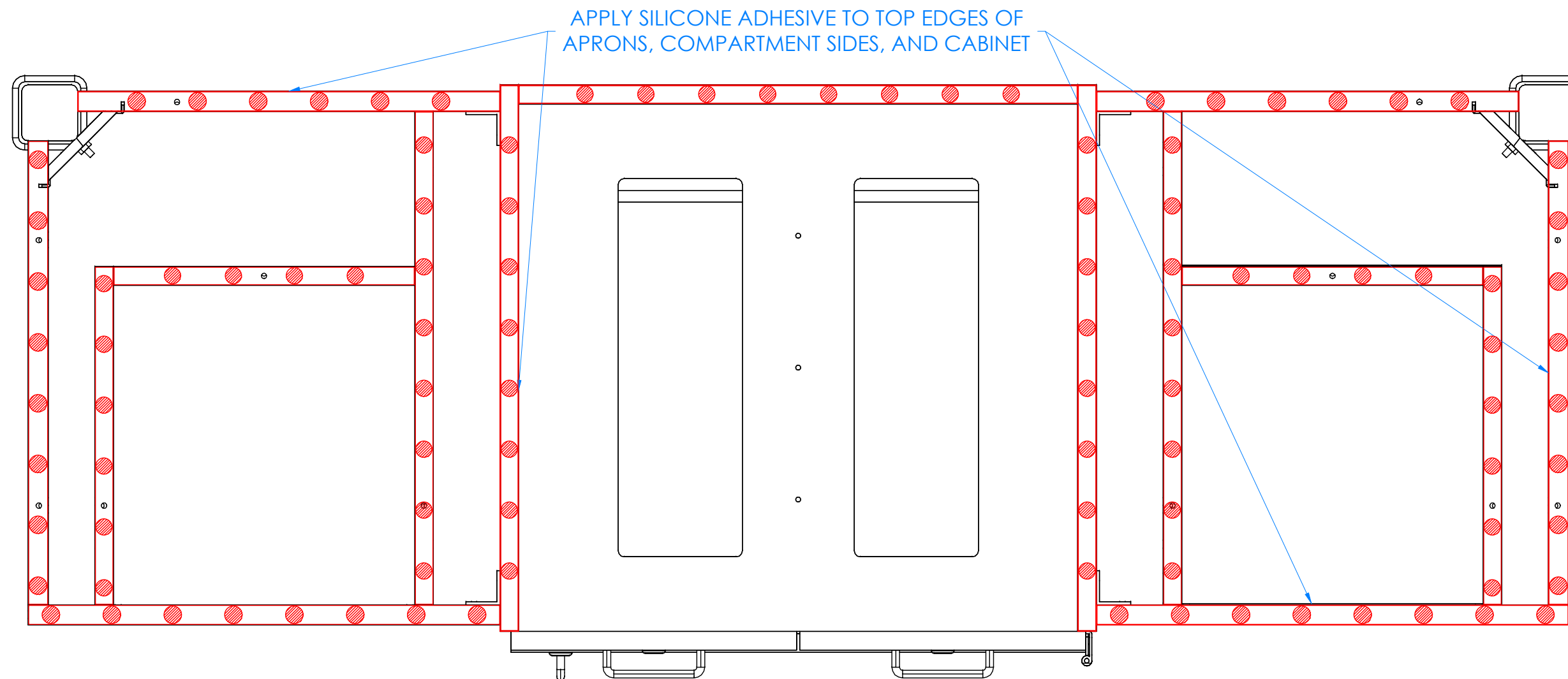
REV.	DESCRIPTION	DATE	NAME	ECN No.
C	TOP SCREWS UPDATED	4/15/2024	RJM	N/A
A	CREATED DRAWING	3/15/16	EMR	N/A
REVISION LEVEL				

STEP 8:

- a. IF YOU *DO NOT* HAVE A PHENOLIC OR EPOXY TOP, SKIP TO STEP 9.
- b. APPLY SILICONE ADHESIVE TO TOP EDGES OF CABINET, COMPARTMENT SIDES, AND APRONS.
- c. APPLY SILICONE ADHESIVE IN DOT PATTERN LIKE SHOWN BELOW FOR BEST RESULTS.
- d. PLACE TOP ON UNIT WITH PROPER OVERHANG (2" ON SIDES AND 1" ON FRONT AND BACK).
- e. CLAMP TOP TO APRONS AND CABINET TOP TO REMOVE ANY WARP USING SHIMS AND C-CLAMPS, IF NEEDED, WHEN ALIGNING TOP (DO THIS BEFORE ADHESIVE ON EDGES SETS UP).
- f. LET CURE FOR 6-12 HOURS.

HARDWARE REQUIRED FOR STEP

QTY	DESCRIPTION	PART NUMBER
1	TOP	VARIES
1	SILICONE	100711



TOP VIEW OF TABLE SHOWN

NOTE:

1.

ALL DIMENSIONS ARE IN INCHES UNLESS NOTED OTHERWISE
 DECIMALS: .X = ± .030
 .XX = ± .020
 .XXX = ± .010
 ANGLES: = ± 1°
 CABINET SQUARENESS = ± .0625

DWN BY:	EMR	DATE DWN:	3/15/16
APR BY:		DATE APR:	
APR BY:		DATE APR:	

300 South Krueger Street
 Suring, WI 54174
diversifiedwoodcrafts.com

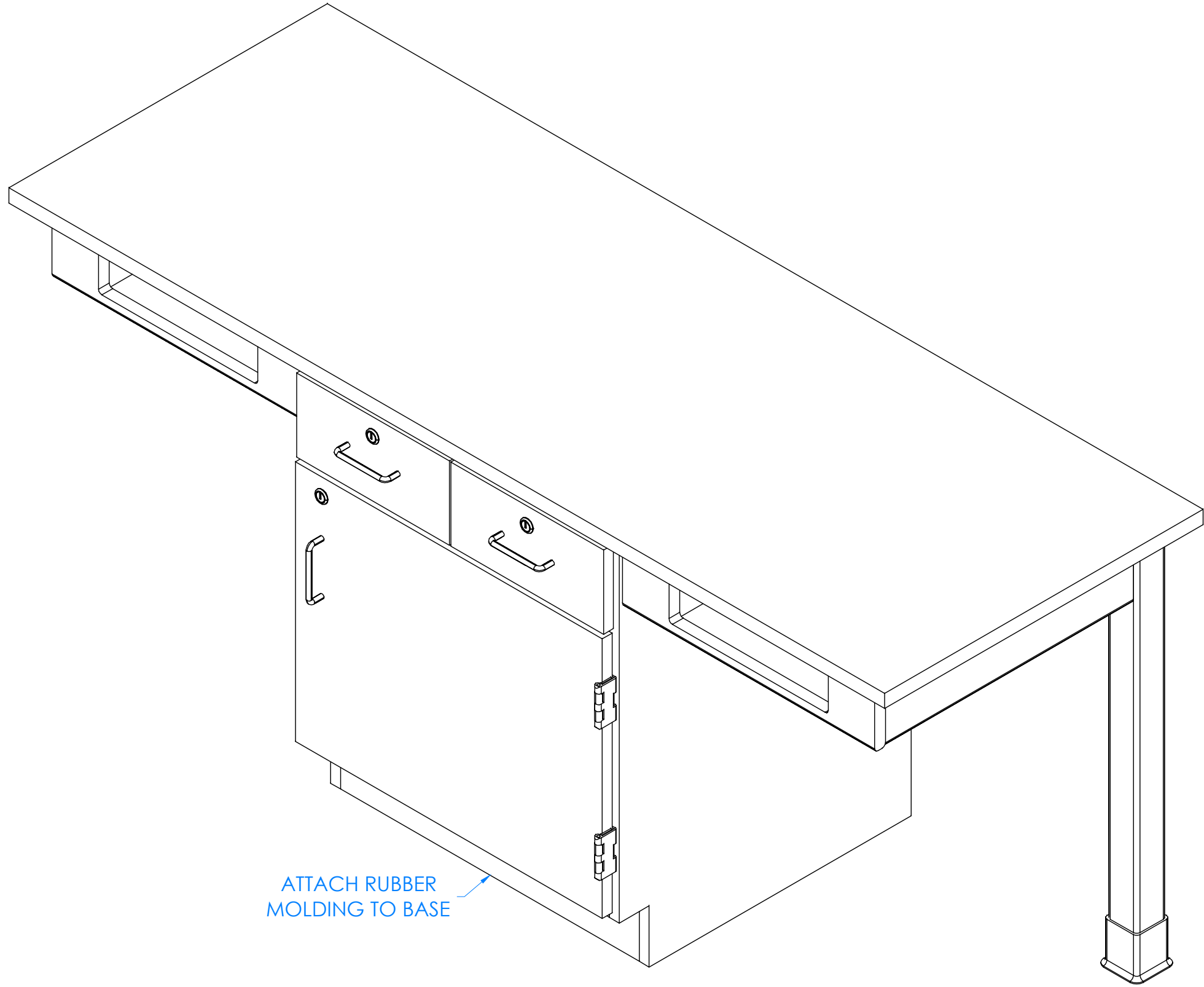
CONFIDENTIAL:
 ALL DESIGN RIGHTS RESERVED.
 THE INFORMATION, DATA, DESIGN, AND DRAWINGS EMBODIED IN THIS DOCUMENT AND ALL REPRODUCTIONS THEREOF ARE THE EXCLUSIVE PROPERTY OF DIVERSIFIED WOODCRAFTS, INC.

TITLE:
STORAGE CABINET TABLES-SINGLE ASSEMBLY INSTRUCTIONS

THESE DOCUMENTS ARE SUPPLIED WITH THE UNDERSTANDING THAT THEY WILL NOT BE DISCLOSED TO THIRD PARTIES WITHOUT WRITTEN CONSENT OF DIVERSIFIED WOODCRAFTS, INC. ANY REPRODUCTION IN PART OR WHOLE WITHOUT WRITTEN CONSENT IS SUBJECT TO LEGAL ACTION.

DRAWING NUMBER:	SCALE:	SHEET:	REVISION:
2100, C2100, 2200, & C2200 SERIES	NTS	10 OF 11	REV C

REV.	DESCRIPTION	DATE	NAME	ECN No.
C	TOP SCREWS UPDATED	4/15/2024	RJM	N/A
A	CREATED DRAWING	3/15/16	EMR	N/A
REVISION LEVEL				



HARDWARE REQUIRED FOR STEP

QTY	DESCRIPTION	PART NUMBER
7.5	RUBBER BASE MOLDING	100283
4	STAINLESS STEEL CORNERS	100057
16	SCREWS - BASE	100064

STEP 9:

- a. ATTACH RUBBER MOLDING TO BASE OF CABINET USING CONTACT CEMENT.
- b. SCREW STAINLESS STEEL CORNER BRACKETS ON EACH CORNER OVER BASE MOLDING WITH HARDWARE PROVIDED.

NOTE:

1.

COMPLETE UNIT SHOWN

ALL DIMENSIONS ARE IN INCHES UNLESS NOTED OTHERWISE DECIMALS: .X = ± .030 .XX = ± .020 .XXX = ± .010 ANGLES: = ± 1° CABINET SQUARENESS = ± .0625	DWN BY: EMR APR BY: APR BY:	DATE DWN: 3/15/16 DATE APR: DATE APR:
---	-----------------------------------	---



300 South Krueger Street
Suring, WI 54174
diversifiedwoodcrafts.com

CONFIDENTIAL:
ALL DESIGN RIGHTS RESERVED.
THE INFORMATION, DATA, DESIGN, AND DRAWINGS EMBODIED IN THIS DOCUMENT AND ALL REPRODUCTIONS THEREOF ARE THE EXCLUSIVE PROPERTY OF DIVERSIFIED WOODCRAFTS, INC.

TITLE:
STORAGE CABINET TABLES-SINGLE
ASSEMBLY INSTRUCTIONS

THESE DOCUMENTS ARE SUPPLIED WITH THE UNDERSTANDING THAT THEY WILL NOT BE DISCLOSED TO THIRD PARTIES WITHOUT WRITTEN CONSENT OF DIVERSIFIED WOODCRAFTS, INC. ANY REPRODUCTION IN PART OR WHOLE WITHOUT WRITTEN CONSENT IS SUBJECT TO LEGAL ACTION.

DRAWING NUMBER: 2100, C2100, 2200, & C2200 SERIES	SCALE: NTS	SHEET: 11 OF 11	REVISION: REV C
--	---------------	--------------------	--------------------

REV.	DESCRIPTION	DATE	NAME	ECN No.
C	TOP SCREWS UPDATED	4/15/2024	RJM	N/A
A	CREATED DRAWING	3/15/16	EMR	N/A
REVISION LEVEL				