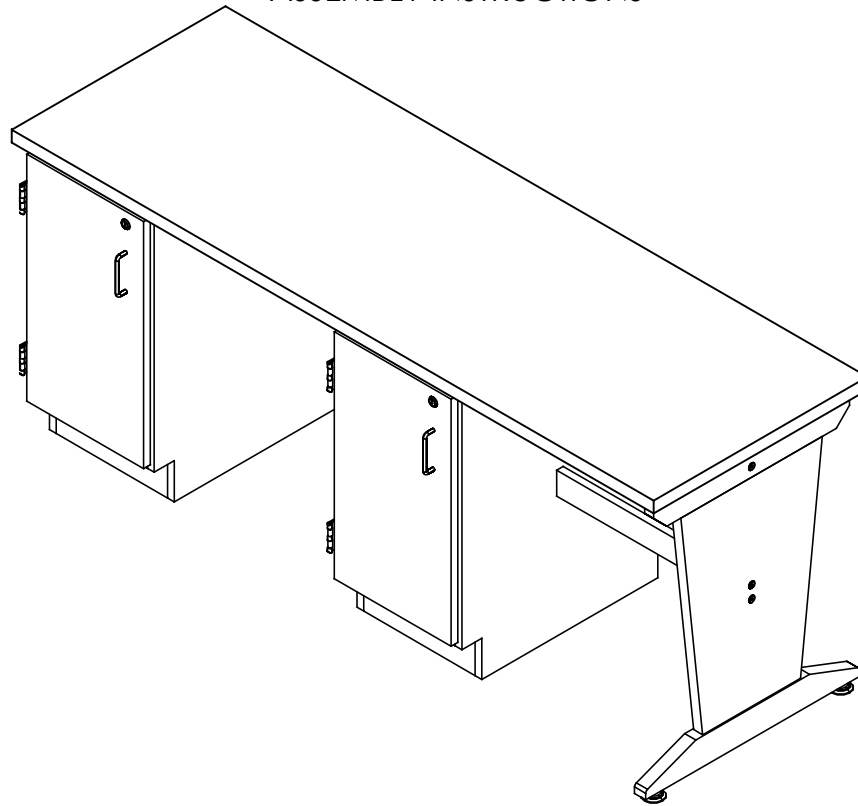


# STUDENT SEWING TABLE

SMT-72P  
ASSEMBLY INSTRUCTIONS



## NOTE:

1. MODEL VIEWS MAY NOT REPRESENT EXACT MODEL PURCHASED

ALL DIMENSIONS ARE IN INCHES UNLESS NOTED OTHERWISE	DWN BY:	EMR	DATE DWN:	11/22/16
DECIMALS: $\frac{1}{16}$ = $\pm .030$	APR BY:		DATE APR:	
XX = $\pm .020$	APR BY:		DATE APR:	
XXX = $\pm .010$	APR BY:		DATE APR:	
ANGLES: $\pm 1^\circ$	APR BY:		DATE APR:	
CABINET SQUARENESS: $\pm .0625$	APR BY:		DATE APR:	

CONFIDENTIAL:  
ALL DESIGN RIGHTS RESERVED  
THE INFORMATION, DATA, DESIGN, AND DRAWINGS EMBODIED IN THIS DOCUMENT AND ALL REPRODUCTIONS THEREOF ARE THE EXCLUSIVE PROPERTY OF DIVERSIFIED WOODCRAFTS, INC.

THESE DOCUMENTS ARE SUPPLIED WITH THE UNDERSTANDING THAT THEY WILL NOT BE DISCLOSED TO THIRD PARTIES WITHOUT WRITTEN CONSENT OF DIVERSIFIED WOODCRAFTS, INC. ANY REPRODUCTION IN PART OR WHOLE WITHOUT WRITTEN CONSENT IS SUBJECT TO LEGAL ACTION.



300 South Krueger Street  
Suring, WI 54174  
diversifiedwoodcrafts.com

TITLE:  
STUDENT SEWING TABLE  
ASSEMBLY INSTRUCTIONS

REV.	DESCRIPTION	DATE	NAME	ECN NO.
A	CREATED ASSEMBLY INSTRUCTIONS	11/22/16	EMR	-

REVISION LEVEL

DRAWING NUMBER:

SMT-72P

SCALE:

NTS

SHEET:

1 OF 9

REVISION:

REV A

**TOOLS REQUIRED**

CONTACT CEMENT

4MM ALLEN WRENCH

SCREW DRIVER

**ASSEMBLY COMPONENTS**

ITEMS INCLUDED	PART #	PART DESCRIPTION	QTY
TOP	17-0018	TOP, PLAM, 1.25X24X72, ALMOND	1
SCREWS - TOP	100641	SCREW, #8X1- 3/4 QUAD RD WASH HD	8
CABINET ASSEMBLY	N/A	B96 - 14"W X 29"H X 22"D	2
LEG	N/A	SMT-72P LEG (FACTORY ASSEMBLED)	1
SCREWS - LEG TO TOP AND UPPER TRUSS TO TOP	227831	SCREW, #10X2.50 PHIL PAN SMS, ZINC	3
STRETCHER	N/A	STRETCHER - 0.75"THK X 2.50"W X 20.50"L	1
UPPER TRUSS	N/A	UPPER TRUSS - 1.00"THK X 3.00"W X 7.00"L	1
CONFIRMATS - STRETCHER AND UPPER TRUSS	237959	SCREW, 7MMX70MM, CONN, ALLENHEAD, BLACK	6
RUBBER BASE MOLDING	100283	RUBBER BASE MOLDING (SOLD BY FOOT)	12
STAINLESS STEEL CORNERS	100057	CORNERS-STAINLESS STEEL, BASE	8
SCREWS - BASE	100064	SCREW, #6X 1/2 PTH SMS SS SCREW	32
SHELF CLIPS	100027	SHELF CLIPS, PLASTIC, 5MM PIN	8

**NOTE:**

1.

ALL DIMENSIONS ARE IN INCHES UNLESS NOTED OTHERWISE  
 DECIMALS: .X = ± .030  
 .XX = ± .020  
 .XXX = ± .010  
 ANGLES: = ± 1°  
 CABINET SQUARENESS = ± .0625

DWN BY: EMR DATE DWN: 11/22/16  
 APR BY: DATE APR:  
 APR BY: DATE APR:

CONFIDENTIAL:  
 ALL DESIGN RIGHTS RESERVED  
 THE INFORMATION, DATA, DESIGN, AND DRAWINGS EMBODIED IN THIS DOCUMENT AND ALL REPRODUCTIONS THEREOF ARE THE EXCLUSIVE PROPERTY OF DIVERSIFIED WOODCRAFTS, INC.

THESE DOCUMENTS ARE SUPPLIED WITH THE UNDERSTANDING THAT THEY WILL NOT BE DISCLOSED TO THIRD PARTIES WITHOUT WRITTEN CONSENT OF DIVERSIFIED WOODCRAFTS, INC. ANY REPRODUCTION IN PART OR WHOLE WITHOUT WRITTEN CONSENT IS SUBJECT TO LEGAL ACTION.



300 South Krueger Street  
 Suring, WI 54174  
 diversifiedwoodcrafts.com

TITLE:  
 STUDENT SEWING TABLE  
 TOOLS AND ASSEMBLY COMPONENTS

DRAWING NUMBER:

SMT-72P

SCALE:

NTS

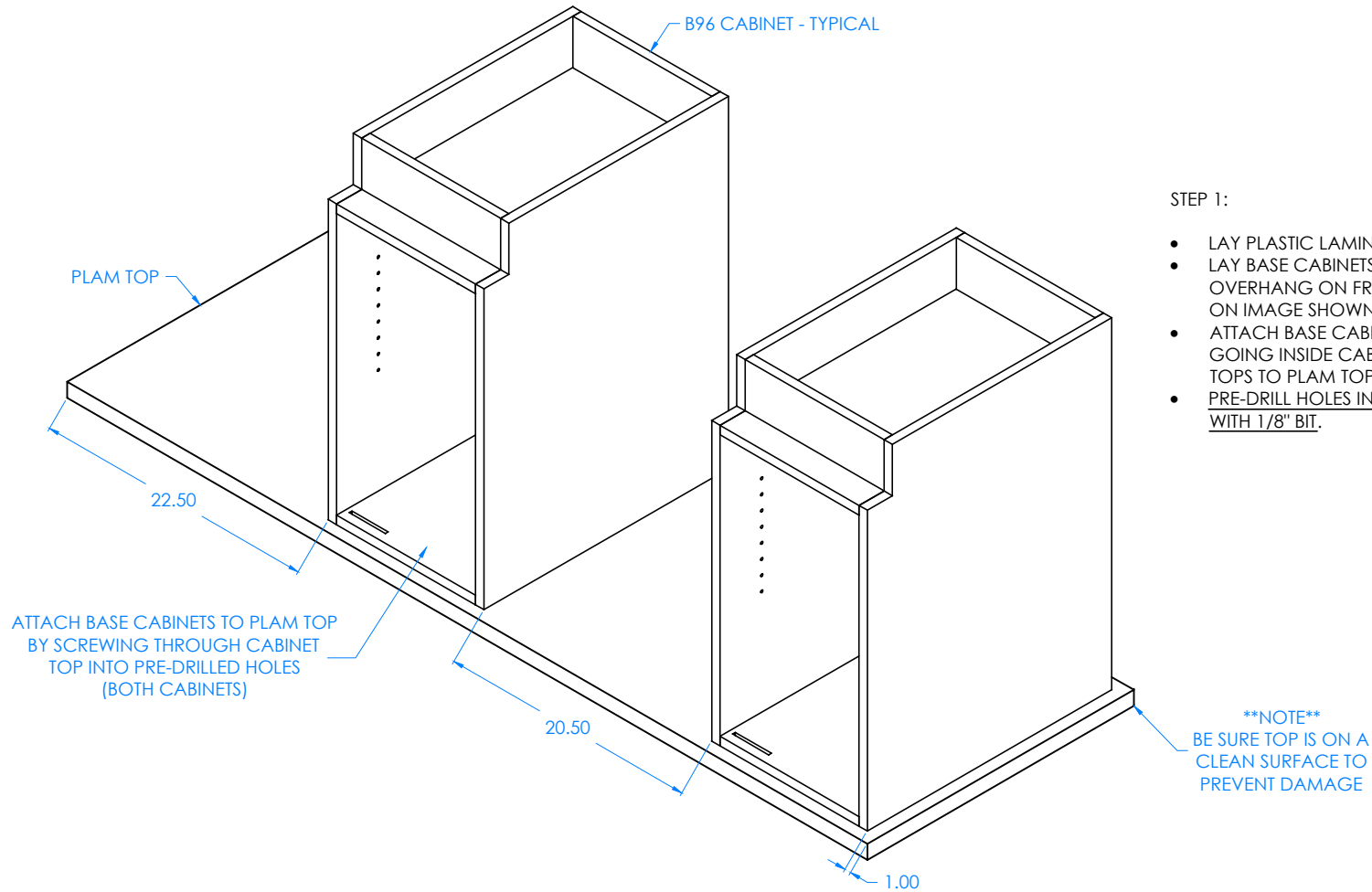
SHEET:

2 OF 9

REVISION:

REV A

A	CREATED ASSEMBLY INSTRUCTIONS	11/22/16	EMR	-
REV.	DESCRIPTION	DATE	NAME	ECN NO.
REVISION LEVEL				



## STEP 1:

- LAY PLASTIC LAMINATE TOP ON FLOOR.
- LAY BASE CABINETS ON TOP WITH PROPER OVERHANGS (1" OVERHANG ON FRONT AND BACK ALONG WITH DIMENSION ON IMAGE SHOWN).
- ATTACH BASE CABINETS TO TOP WITH SCREWS PROVIDED BY GOING INSIDE CABINETS AND SCREWING THROUGH CABINET TOPS TO PLAM TOP.
- PRE-DRILL HOLES IN CABINET TOP TO PLASTIC LAMINATE TOP WITH 1/8" BIT.

## NOTE:

1.

DOORS AND HARDWARE REMOVED TO  
SHOW CLARITY

REV.	DESCRIPTION	DATE	NAME	ECN NO.
A	CREATED ASSEMBLY INSTRUCTIONS	11/22/16	EMR	-

REVISION LEVEL

ALL DIMENSIONS ARE IN INCHES UNLESS NOTED OTHERWISE	DWN BY:	EMR	DATE DWN:	11/22/16
DECIMALS: .X = ± .030	APR BY:		DATE APR:	
.XX = ± .020	APR BY:		DATE APR:	
.XXX = ± .010	APR BY:		DATE APR:	
ANGLES: = ± 1°	APR BY:		DATE APR:	
CABINET SQUARENESS = ± .0625	APR BY:		DATE APR:	

CONFIDENTIAL:  
ALL DESIGN RIGHTS RESERVED  
THE INFORMATION, DATA, DESIGN, AND DRAWINGS EMBODIED IN THIS DOCUMENT AND ALL REPRODUCTIONS THEREOF ARE THE EXCLUSIVE PROPERTY OF DIVERSIFIED WOODCRAFTS, INC.

THESE DOCUMENTS ARE SUPPLIED WITH THE UNDERSTANDING THAT THEY WILL NOT BE DISCLOSED TO THIRD PARTIES WITHOUT WRITTEN CONSENT OF DIVERSIFIED WOODCRAFTS, INC. ANY REPRODUCTION IN PART OR WHOLE WITHOUT WRITTEN CONSENT IS SUBJECT TO LEGAL ACTION.



300 South Krueger Street  
Suring, WI 54174  
diversifiedwoodcrafts.com

TITLE:  
STUDENT SEWING TABLE  
ASSEMBLY INSTRUCTIONS

DRAWING NUMBER:

SMT-72P

SCALE:

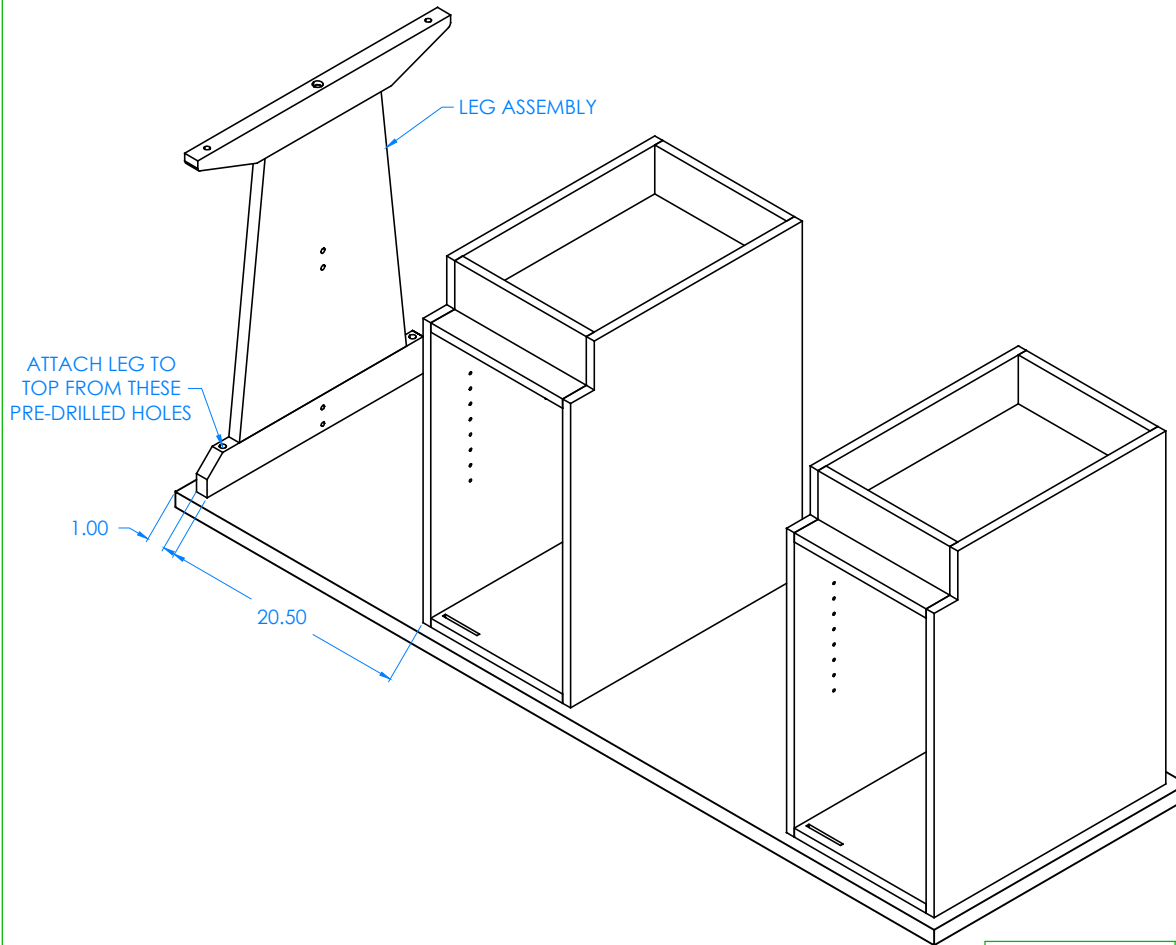
NTS

SHEET:

3 OF 9

REVISION:

REV A



## STEP 2:

- ATTACH LEG ASSEMBLY TO PLAM TOP WITH HARDWARE PROVIDED.
- MAKE SURE LEG ASSEMBLY IS SET ON TOP WITH CORRECT OVERHANG AND CORRECT WIDTH IN BETWEEN CABINET.

## NOTE:

1.

DOORS AND HARDWARE REMOVED TO  
SHOW CLARITY

REV.	DESCRIPTION	DATE	NAME	ECN NO.
A	CREATED ASSEMBLY INSTRUCTIONS	11/22/16	EMR	-
REVISION LEVEL				

ALL DIMENSIONS ARE IN INCHES UNLESS NOTED OTHERWISE	DWN BY:	EMR	DATE DWN:	11/22/16
DECIMALS: $\frac{1}{16} = \pm .030$	APR BY:		DATE APR:	
XX = $\pm .020$	APR BY:		DATE APR:	
XXX = $\pm .010$	APR BY:		DATE APR:	
ANGLES: $\pm 1^\circ$	APR BY:		DATE APR:	
CABINET SQUARENESS: $\pm .0625$	APR BY:		DATE APR:	

CONFIDENTIAL:  
ALL DESIGN RIGHTS RESERVED  
THE INFORMATION, DATA, DESIGN, AND DRAWINGS EMBODIED IN THIS DOCUMENT AND ALL REPRODUCTIONS THEREOF ARE THE EXCLUSIVE PROPERTY OF DIVERSIFIED WOODCRAFTS, INC.

THESE DOCUMENTS ARE SUPPLIED WITH THE UNDERSTANDING THAT THEY WILL NOT BE DISCLOSED TO THIRD PARTIES WITHOUT WRITTEN CONSENT OF DIVERSIFIED WOODCRAFTS, INC. ANY REPRODUCTION IN PART OR WHOLE WITHOUT WRITTEN CONSENT IS SUBJECT TO LEGAL ACTION.



300 South Krueger Street  
Suring, WI 54174  
diversifiedwoodcrafts.com

TITLE:  
STUDENT SEWING TABLE  
ASSEMBLY INSTRUCTIONS

DRAWING NUMBER:

SMT-72P

SCALE:

NTS

SHEET:

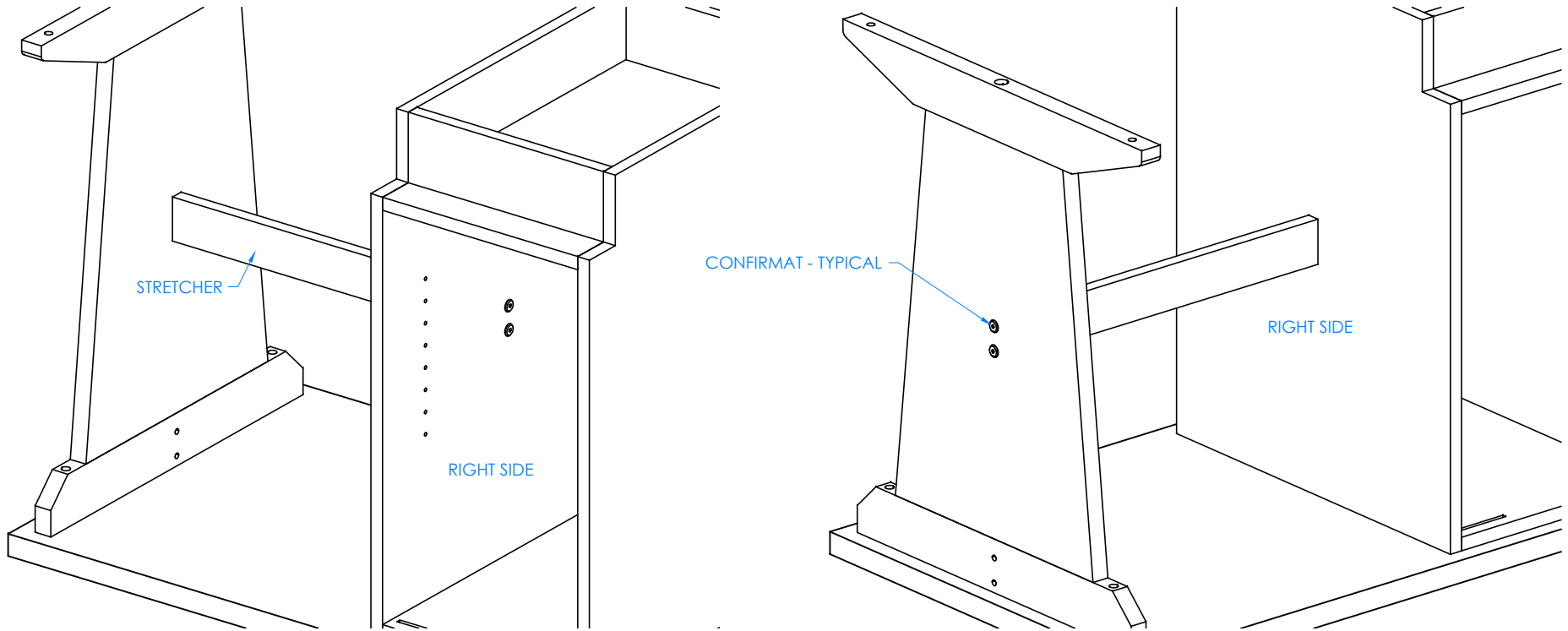
4 OF 9

REVISION:

REV A

## STEP 3:

- ALIGN HOLES ON STRETCHER TO HOLES IN THE MIDDLE OF LEG ASSEMBLY AND RIGHT SIDE OF CABINET.
- SCREW CONFIRMATS INTO STRETCHER FROM THE OUTSIDE OF LEG ASSEMBLY AND INSIDE OF CABINET.



INSIDE AND OUTSIDE OF CABINET AND LEG ASSEMBLY SHOWN  
DOORS AND HARDWARE REMOVED TO SHOW CLARITY

## NOTE:

1.

ALL DIMENSIONS ARE IN INCHES UNLESS NOTED OTHERWISE	DWN BY:	EMR	DATE DWN:	11/22/16
DECIMALS: $\pm .030$	APR BY:		DATE APR:	
XX $\pm .020$	APR BY:		DATE APR:	
.XXX $\pm .010$	APR BY:		DATE APR:	
ANGLES: $\pm 1^{\circ}$	APR BY:		DATE APR:	
CABINET SQUARENESS: $\pm .0625$	APR BY:		DATE APR:	

CONFIDENTIAL:  
ALL DESIGN RIGHTS RESERVED  
THE INFORMATION, DATA, DESIGN, AND DRAWINGS EMBODIED IN THIS DOCUMENT AND ALL REPRODUCTIONS THEREOF ARE THE EXCLUSIVE PROPERTY OF DIVERSIFIED WOODCRAFTS, INC.

THESE DOCUMENTS ARE SUPPLIED WITH THE UNDERSTANDING THAT THEY WILL NOT BE DISCLOSED TO THIRD PARTIES WITHOUT WRITTEN CONSENT OF DIVERSIFIED WOODCRAFTS, INC. ANY REPRODUCTION IN PART OR WHOLE WITHOUT WRITTEN CONSENT IS SUBJECT TO LEGAL ACTION.



300 South Krueger Street  
Suring, WI 54174  
diversifiedwoodcrafts.com

TITLE:  
STUDENT SEWING TABLE  
ASSEMBLY INSTRUCTIONS

REV.	DESCRIPTION	DATE	NAME	ECN NO.
A	CREATED ASSEMBLY INSTRUCTIONS	11/22/16	EMR	-
REVISION LEVEL				

DRAWING NUMBER:

SMT-72P

SCALE:

NTS

SHEET:

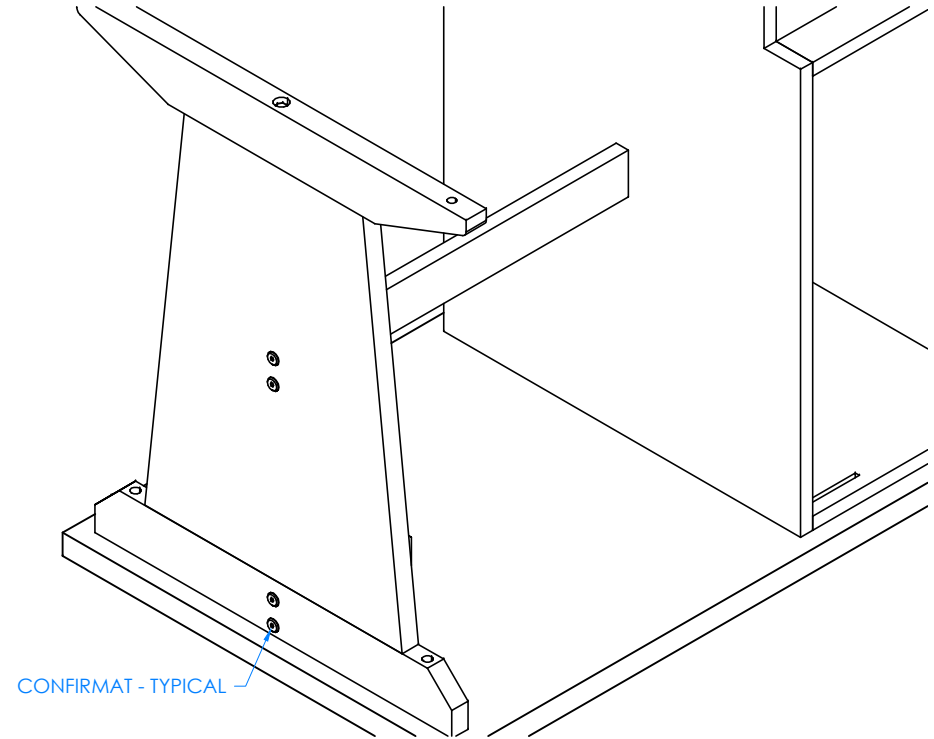
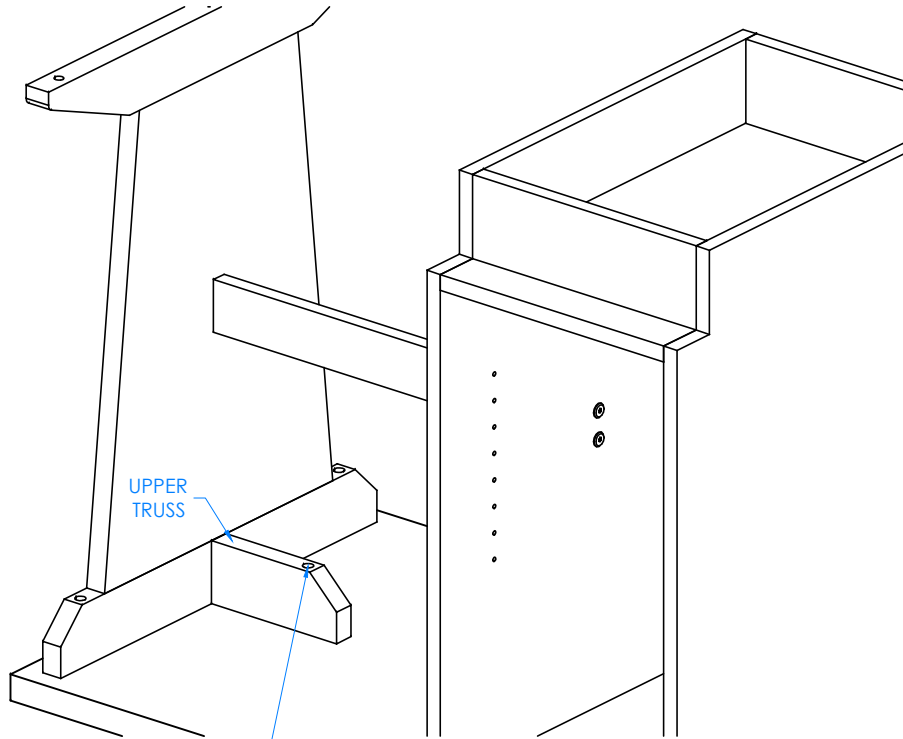
5 OF 9

REVISION:

REV A

## STEP 4:

- ALIGN HOLES ON UPPER TRUSS TO HOLES ON TOP OF LEG ASSEMBLY.
- SCREW CONFIRMATS INTO UPPER TRUSS FROM OUTSIDE OF LEG ASSEMBLY.
- ATTACH TRUSS TO TOP USING REMAINING SCREWS PROVIDED.



INSIDE AND OUTSIDE OF CABINET AND LEG ASSEMBLY SHOWN  
DOORS AND HARDWARE REMOVED TO SHOW CLARITY

## NOTE:

1.

REV.	DESCRIPTION	DATE	NAME	ECN NO.
A	CREATED ASSEMBLY INSTRUCTIONS	11/22/16	EMR	-
REVISION LEVEL				

ALL DIMENSIONS ARE IN INCHES UNLESS NOTED OTHERWISE	DWN BY:	EMR	DATE DWN:	11/22/16
DECIMALS: .X = ± .030	APR BY:		DATE APR:	
.XX = ± .020	APR BY:		DATE APR:	
.XXX = ± .010	APR BY:		DATE APR:	
ANGLES: = ± 1°	APR BY:		DATE APR:	
CABINET SQUARENESS: = ± .0625	APR BY:		DATE APR:	

CONFIDENTIAL:  
ALL DESIGN RIGHTS RESERVED  
THE INFORMATION, DATA, DESIGN, AND DRAWINGS EMBODIED IN THIS DOCUMENT AND ALL REPRODUCTIONS THEREOF ARE THE EXCLUSIVE PROPERTY OF DIVERSIFIED WOODCRAFTS, INC.

THESE DOCUMENTS ARE SUPPLIED WITH THE UNDERSTANDING THAT THEY WILL NOT BE DISCLOSED TO THIRD PARTIES WITHOUT WRITTEN CONSENT OF DIVERSIFIED WOODCRAFTS, INC. ANY REPRODUCTION IN PART OR WHOLE WITHOUT WRITTEN CONSENT IS SUBJECT TO LEGAL ACTION.



300 South Krueger Street  
Suring, WI 54174  
diversifiedwoodcrafts.com

TITLE:  
STUDENT SEWING TABLE  
ASSEMBLY INSTRUCTIONS

DRAWING NUMBER:

SMT-72P

SCALE:

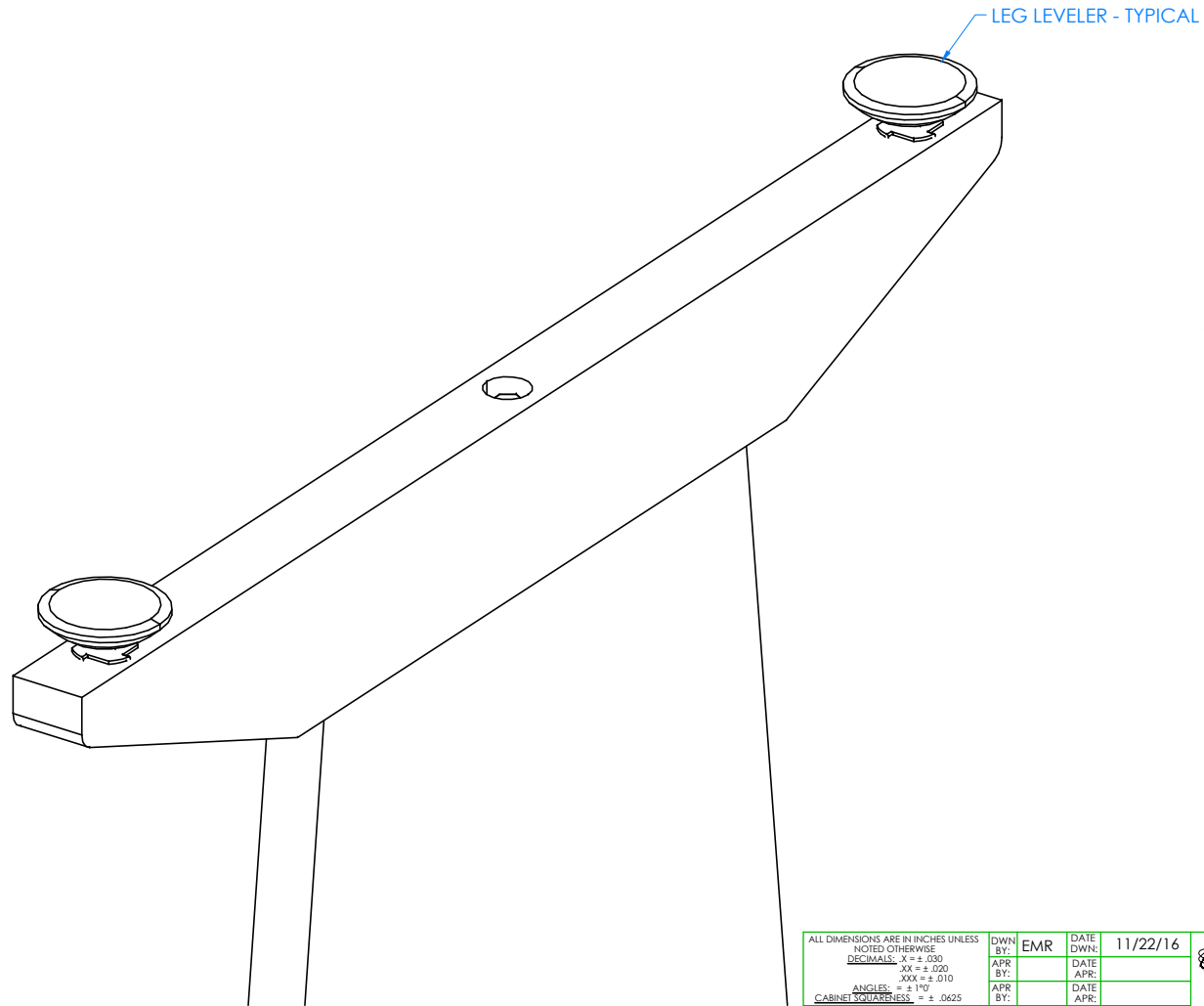
NTS

SHEET:

6 OF 9

REVISION:

REV A



## STEP 5:

- SCREW LEG LEVELERS INTO T-NUT ON BOTTOM OF LEG.

## NOTE:

1.

## CLOSE UP OF LEG LEVELER ASSEMBLY

REV.	DESCRIPTION	DATE	NAME	ECN NO.
A	CREATED ASSEMBLY INSTRUCTIONS	11/22/16	EMR	-
REVISION LEVEL				

ALL DIMENSIONS ARE IN INCHES UNLESS NOTED OTHERWISE	DWN BY:	EMR	DATE DWN:	11/22/16
DECIMALS: .X = ± .030	APR BY:		DATE APR:	
.XX = ± .020	APR BY:		DATE APR:	
.XXX = ± .010	APR BY:		DATE APR:	
ANGLES: = ± 1°	APR BY:		DATE APR:	
CABINET SQUARENESS: = ± .0625	APR BY:		DATE APR:	

CONFIDENTIAL:  
ALL DESIGN RIGHTS RESERVED  
THE INFORMATION, DATA, DESIGN, AND DRAWINGS EMBODIED IN THIS DOCUMENT AND ALL REPRODUCTIONS THEREOF ARE THE EXCLUSIVE PROPERTY OF DIVERSIFIED WOODCRAFTS, INC.

THESE DOCUMENTS ARE SUPPLIED WITH THE UNDERSTANDING THAT THEY WILL NOT BE DISCLOSED TO THIRD PARTIES WITHOUT WRITTEN CONSENT OF DIVERSIFIED WOODCRAFTS, INC. ANY REPRODUCTION IN PART OR WHOLE WITHOUT WRITTEN CONSENT IS SUBJECT TO LEGAL ACTION.



300 South Krueger Street  
Suring, WI 54174  
diversifiedwoodcrafts.com

TITLE:  
STUDENT SEWING TABLE  
ASSEMBLY INSTRUCTIONS

DRAWING NUMBER:

SMT-72P

SCALE:

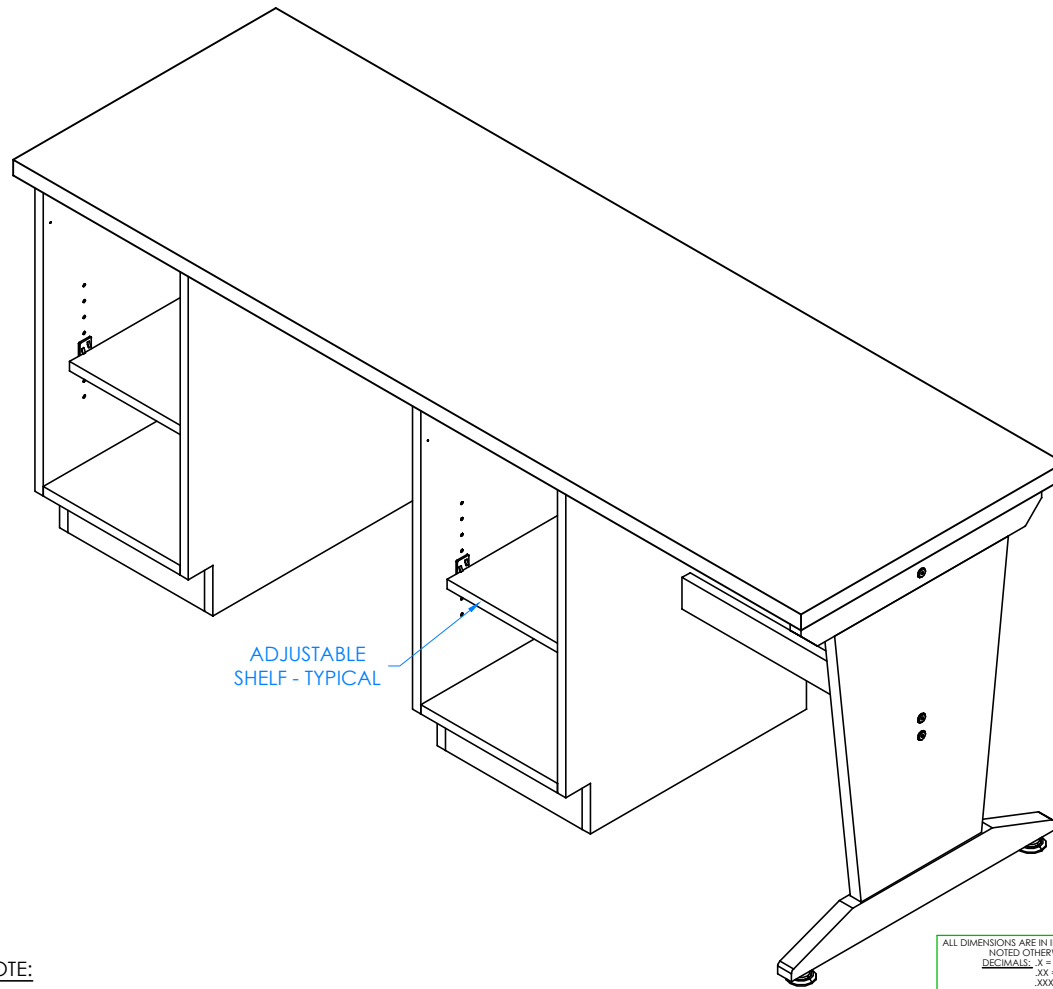
NTS

SHEET:

7 OF 9

REVISION:

REV A



## STEP 6:

- WITH HELP FROM ANOTHER PERSON, TIP TABLE UP.
- ADJUST LEG LEVELERS TO LEVEL LEG WITH CABINETS.
- INSERT SHELF CLIPS IN DESIRED LOCATION.
- PLACE SHELVES ON CLIPS, MAKING SURE THEY ARE LEVEL.

## NOTE:

1.

DOORS AND HARDWARE REMOVED TO  
SHOW CLARITY

REV.	DESCRIPTION	DATE	NAME	ECN NO.
A	CREATED ASSEMBLY INSTRUCTIONS	11/22/16	EMR	-
REVISION LEVEL				

ALL DIMENSIONS ARE IN INCHES UNLESS NOTED OTHERWISE	DWN BY:	EMR	DATE DWN:	11/22/16
DECIMALS: $\frac{1}{16}$ = $\pm .030$	APR BY:		DATE APR:	
XX = $\pm .020$	APR BY:		DATE APR:	
XXX = $\pm .010$	APR BY:		DATE APR:	
ANGLES: $\pm 1^\circ$	APR BY:		DATE APR:	
CABINET SQUARENESS: $\pm .0625$	APR BY:		DATE APR:	

CONFIDENTIAL:  
ALL DESIGN RIGHTS RESERVED  
THE INFORMATION, DATA, DESIGN, AND DRAWINGS EMBODIED IN THIS DOCUMENT AND ALL REPRODUCTIONS THEREOF ARE THE EXCLUSIVE PROPERTY OF DIVERSIFIED WOODCRAFTS, INC.

THESE DOCUMENTS ARE SUPPLIED WITH THE UNDERSTANDING THAT THEY WILL NOT BE DISCLOSED TO THIRD PARTIES WITHOUT WRITTEN CONSENT OF DIVERSIFIED WOODCRAFTS, INC. ANY REPRODUCTION IN PART OR WHOLE WITHOUT WRITTEN CONSENT IS SUBJECT TO LEGAL ACTION.



300 South Krueger Street  
Suring, WI 54174  
diversifiedwoodcrafts.com

TITLE:  
STUDENT SEWING TABLE  
ASSEMBLY INSTRUCTIONS

DRAWING NUMBER:

SMT-72P

SCALE:

NTS

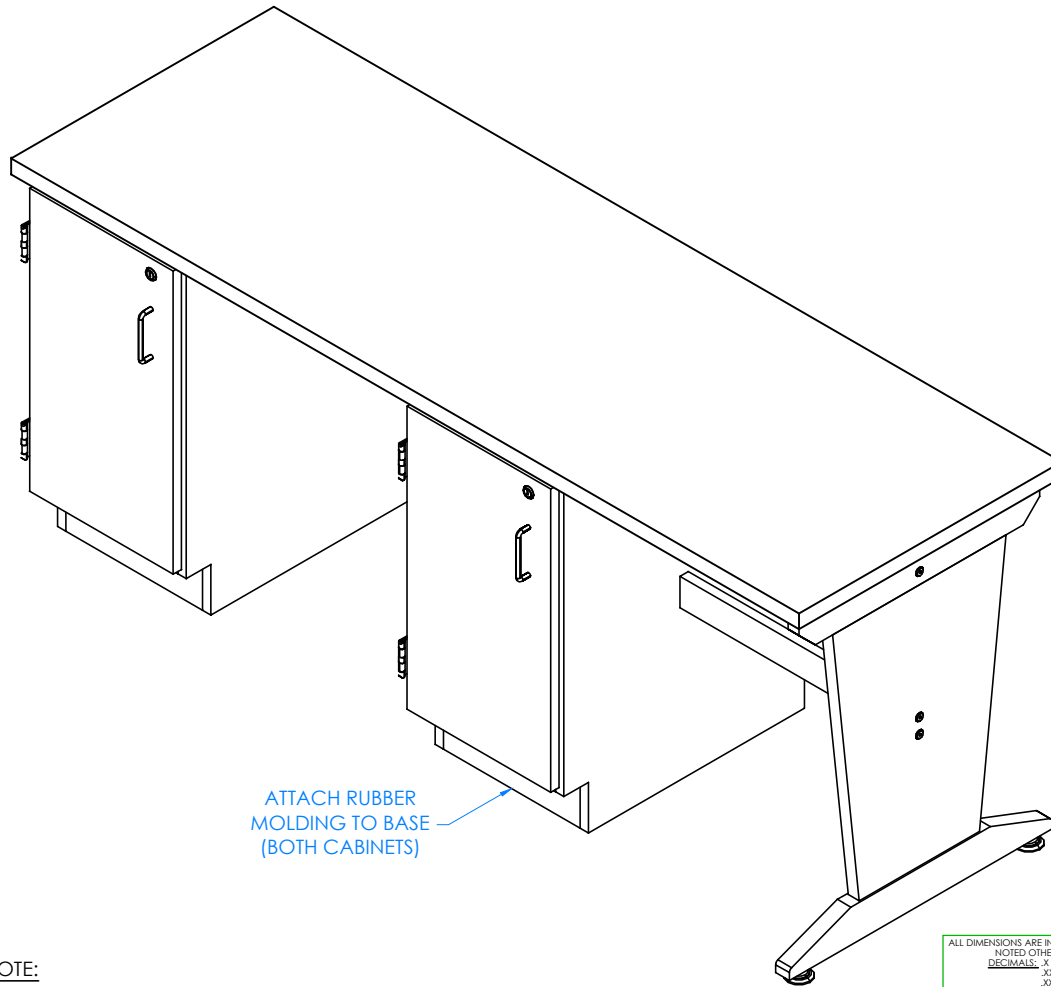
SHEET:

8 OF 9

REVISION:

REV A





## STEP 7:

- SET SEWING TABLE IN DESIRED LOCATION.
- ATTACH RUBBER MOLDING TO BASE OF CABINETS USING CONTACT CEMENT.
- SCREW STAINLESS STEEL CORNER BRACKETS ON EACH CORNER OVER MOLDING WITH HARDWARE PROVIDED.

## NOTE:

1.

COMPLETE UNIT SHOWN

A	CREATED ASSEMBLY INSTRUCTIONS	11/22/16	EMR	-
REV.	DESCRIPTION	DATE	NAME	ECN NO.
	REVISION LEVEL			

ALL DIMENSIONS ARE IN INCHES UNLESS NOTED OTHERWISE	DWN BY:	EMR	DATE DWN:	11/22/16
DECIMALS: $\frac{1}{8}$ = $\pm .030$	APR BY:		DATE APR:	
XX = $\pm .020$	APR BY:		DATE APR:	
XXX = $\pm .010$	APR BY:		DATE APR:	
ANGLES: $\pm 1^{\circ}$	APR BY:		DATE APR:	
CABINET SQUARENESS: $\pm .0625$	APR BY:		DATE APR:	

CONFIDENTIAL:  
ALL DESIGN RIGHTS RESERVED  
THE INFORMATION, DATA, DESIGN, AND DRAWINGS EMBODIED IN THIS DOCUMENT AND ALL REPRODUCTIONS THEREOF ARE THE EXCLUSIVE PROPERTY OF DIVERSIFIED WOODCRAFTS, INC.

THESE DOCUMENTS ARE SUPPLIED WITH THE UNDERSTANDING THAT THEY WILL NOT BE DISCLOSED TO THIRD PARTIES WITHOUT WRITTEN CONSENT OF DIVERSIFIED WOODCRAFTS, INC. ANY REPRODUCTION IN PART OR WHOLE WITHOUT WRITTEN CONSENT IS SUBJECT TO LEGAL ACTION.



300 South Krueger Street  
Suring, WI 54174  
diversifiedwoodcrafts.com

TITLE:  
STUDENT SEWING TABLE  
ASSEMBLY INSTRUCTIONS

DRAWING NUMBER:

SMT-72P

SCALE:

NTS

SHEET:

9 OF 9

REVISION:

REV A