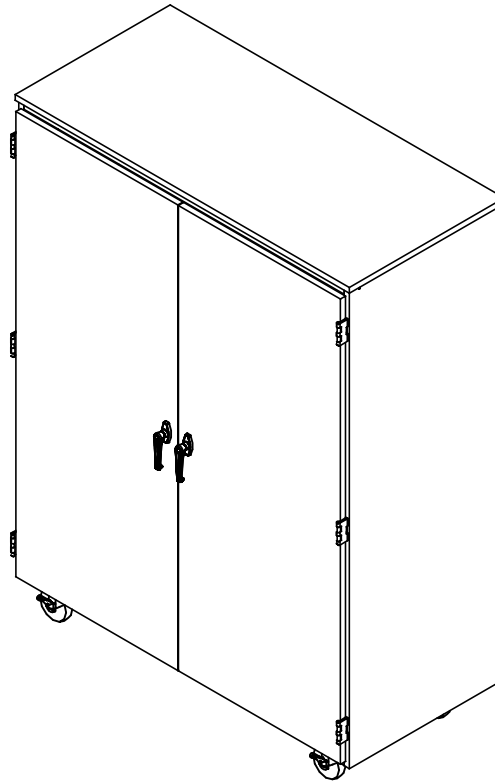


XL MOBILE STORAGE CABINET

MSSC-200 ASSEMBLY INSTRUCTIONS



NOTE:

1. MODEL VIEWS MAY NOT REPRESENT EXACT MODEL PURCHASED

ALL DIMENSIONS ARE IN INCHES UNLESS NOTED OTHERWISE
 CABINET SQUARENESS = $\pm .0625$
 PRAGMATICAL VALUES = $\pm 1/32"$
 - ALL VALUES \pm OVERALL -

DWN BY:	EMK	DATE DWN:	11/11/14
APR BY:		DATE APR:	
APR BY:		DATE APR:	

CONFIDENTIAL:
 ALL DESIGN RIGHTS RESERVED
 THE INFORMATION, DATA, DESIGN, AND DRAWINGS EMBODIED IN THIS DOCUMENT AND ALL REPRODUCTIONS THEREOF ARE THE EXCLUSIVE PROPERTY OF DIVERSIFIED WOODCRAFTS, INC.

THESE DOCUMENTS ARE SUPPLIED WITH THE UNDERSTANDING THAT THEY WILL NOT BE DISCLOSED TO THIRD PARTIES WITHOUT WRITTEN CONSENT OF DIVERSIFIED WOODCRAFTS, INC. ANY REPRODUCTION IN PART OR WHOLE WITHOUT WRITTEN CONSENT IS SUBJECT TO LEGAL ACTION.



300 South Krueger Street
 Suring, WI 54174
diversifiedwoodcrafts.com

TITLE:
 XL MOBILE STORAGE CABINET
 ASSEMBLY INSTRUCTIONS

A	CREATED ASSEMBLY INSTRUCTIONS	11/11/14	EMK	-
REV.	DESCRIPTION	DATE	NAME	ECN NO.
REVISION LEVEL				

DRAWING NUMBER:	SCALE:	SHEET:	REVISION:
MSSC-200	NTS	1 OF 5	REV A

TOOLS REQUIRED $\frac{1}{2}$ " WRENCH

ADJUSTABLE PLIERS

ASSEMBLY COMPONENTS

ITEMS INCLUDED	PART #	PART DESCRIPTION	QTY
CASTERS	100081	CASTER,4IN SWIVEL TOP PLATE, W/BRAKE	4
CASTER HARDWARE KIT	235317	CASTER,ASSY,HDWRE,16-SCREWS, 16-NUTS	1
SHELF CLIPS	100027	SHELF CLIPS,PLASTIC,5MM PIN	8

NOTE:

1.

ALL DIMENSIONS ARE IN INCHES UNLESS NOTED OTHERWISE
 CABINET SQUARENESS = $\pm .0625$
 PRACTICAL VALUES = $\pm 1/32"$
 - ALL VALUES \pm OVERALL -

DWN BY:	EMK	DATE DWN:	11/11/14
APR BY:		DATE APR:	
APR BY:		DATE APR:	

CONFIDENTIAL:
 ALL DESIGN RIGHTS RESERVED
 THE INFORMATION, DATA, DESIGN, AND DRAWINGS EMBODIED IN THIS DOCUMENT AND ALL REPRODUCTIONS THEREOF ARE THE EXCLUSIVE PROPERTY OF DIVERSIFIED WOODCRAFTS, INC.

THESE DOCUMENTS ARE SUPPLIED WITH THE UNDERSTANDING THAT THEY WILL NOT BE DISCLOSED TO THIRD PARTIES WITHOUT WRITTEN CONSENT OF DIVERSIFIED WOODCRAFTS, INC. ANY REPRODUCTION IN PART OR WHOLE WITHOUT WRITTEN CONSENT IS SUBJECT TO LEGAL ACTION.



300 South Krueger Street
 Suring, WI 54174
 diversifiedwoodcrafts.com

TITLE:
 XL MOBILE STORAGE CABINET
 TOOLS AND ASSEMBLY COMPONENTS

DRAWING NUMBER:

MSSC-200

SCALE:

NTS

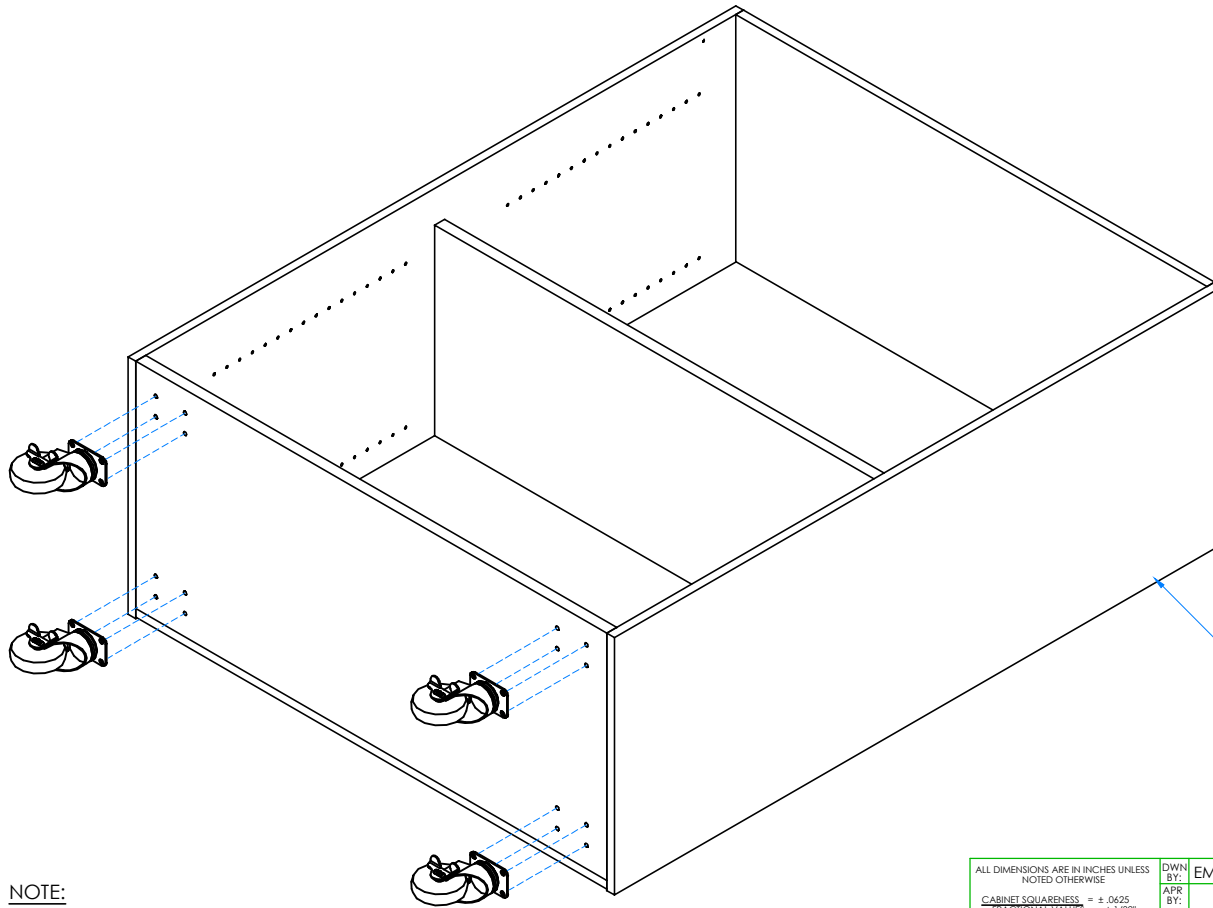
SHEET:

2 OF 5

REVISION:

REV A

A	CREATED ASSEMBLY INSTRUCTIONS	11/11/14	EMK	-
REV.	DESCRIPTION	DATE	NAME	ECN NO.
REVISION LEVEL				



STEP 1:

- WITH HELP FROM ANOTHER PERSON, LAY CABINET ON ITS BACK.
- ATTACH CASTERS FROM INSIDE THE CABINET USING HARDWARE PROVIDED.

NOTE:

1.

DOORS AND HARDWARE REMOVED TO
SHOW CLARITY

A	CREATED ASSEMBLY INSTRUCTIONS	11/11/14	EMK	-
REV.	DESCRIPTION	DATE	NAME	ECN NO.
REVISION LEVEL				

ALL DIMENSIONS ARE IN INCHES UNLESS NOTED OTHERWISE
 CABINET SQUARENESS = $\pm .0625$
 FRAMING VALUES = $\pm 1/32"$
 - ALL VALUES \pm OVERALL -

CONFIDENTIAL:
 ALL DESIGN RIGHTS RESERVED
 THE INFORMATION, DATA, DESIGN, AND DRAWINGS EMBODIED IN THIS DOCUMENT AND ALL REPRODUCTIONS THEREOF ARE THE EXCLUSIVE PROPERTY OF DIVERSIFIED WOODCRAFTS, INC.

THESE DOCUMENTS ARE SUPPLIED WITH THE UNDERSTANDING THAT THEY WILL NOT BE DISCLOSED TO THIRD PARTIES WITHOUT WRITTEN CONSENT OF DIVERSIFIED WOODCRAFTS, INC. ANY REPRODUCTION IN PART OR WHOLE WITHOUT WRITTEN CONSENT IS SUBJECT TO LEGAL ACTION.

DWN BY: EMK DATE DWN: 11/11/14
 APR BY: DATE APR:
 APR BY: DATE APR:



300 South Krueger Street
 Suring, WI 54174
 diversifiedwoodcrafts.com

TITLE:
 XL MOBILE STORAGE CABINET
 ASSEMBLY INSTRUCTIONS

DRAWING NUMBER:

MSSC-200

SCALE:

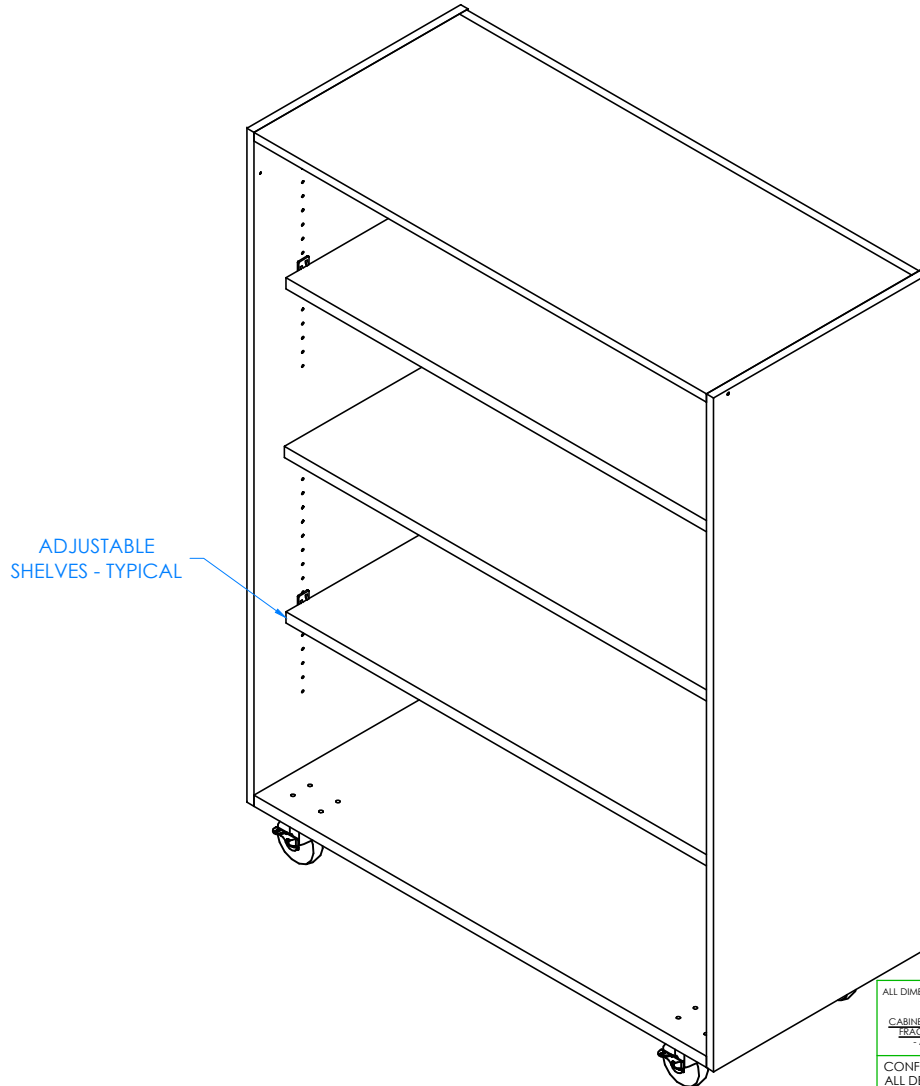
NTS

SHEET:

3 OF 5

REVISION:

REV A

**NOTE:**

1.

DOORS AND HARDWARE REMOVED TO
SHOW CLARITY

A	CREATED ASSEMBLY INSTRUCTIONS	11/11/14	EMK	-
REV.	DESCRIPTION	DATE	NAME	ECN NO.
REVISION LEVEL				

ALL DIMENSIONS ARE IN INCHES UNLESS NOTED OTHERWISE
 CABINET SQUARENESS = $\pm .0625$
 PRACTICAL VALUES = $\pm 1/32"$
 - ALL VALUES \pm OVERALL -

CONFIDENTIAL:
 ALL DESIGN RIGHTS RESERVED
 THE INFORMATION, DATA, DESIGN, AND DRAWINGS EMBODIED
 IN THIS DOCUMENT AND ALL REPRODUCTIONS THEREOF ARE
 THE EXCLUSIVE PROPERTY OF DIVERSIFIED WOODCRAFTS, INC.

THESE DOCUMENTS ARE SUPPLIED WITH THE UNDERSTANDING
 THAT THEY WILL NOT BE DISCLOSED TO THIRD PARTIES WITHOUT
 WRITTEN CONSENT OF DIVERSIFIED WOODCRAFTS, INC. ANY
 REPRODUCTION IN PART OR WHOLE WITHOUT WRITTEN
 CONSENT IS SUBJECT TO LEGAL ACTION.

STEP 2:

- TIP CABINET UP.
- INSERT SHELF CLIPS IN DESIRED LOCATION.
- PLACE SHELVES ON CLIPS, MAKING SURE THEY ARE LEVEL.



300 South Krueger Street
 Suring, WI 54174
diversifiedwoodcrafts.com

TITLE:
**XL MOBILE STORAGE CABINET
 ASSEMBLY INSTRUCTIONS**

DRAWING NUMBER:

MSSC-200

SCALE:

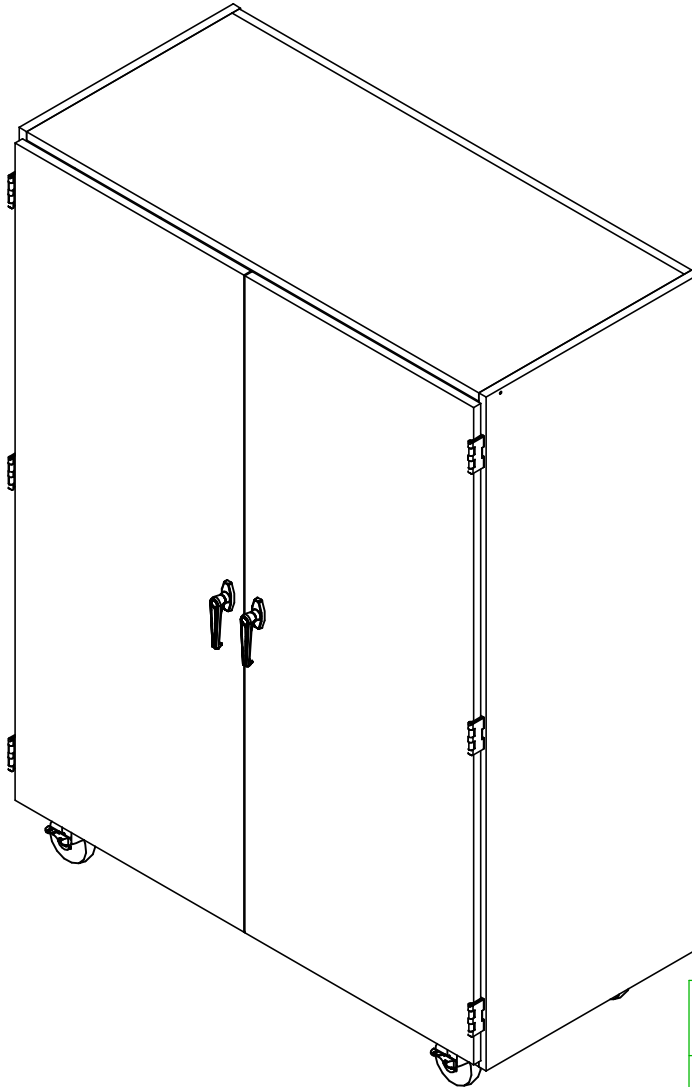
NTS

SHEET:

4 OF 5

REVISION:

REV A



STEP 3:

- PLACE CABINET IN DESIRED LOCATION.

NOTE:

1.

COMPLETE UNIT SHOWN

A	CREATED ASSEMBLY INSTRUCTIONS	11/11/14	EMK	-
REV.	DESCRIPTION	DATE	NAME	ECN NO.
REVISION LEVEL				

ALL DIMENSIONS ARE IN INCHES UNLESS NOTED OTHERWISE
 CABINET SQUARENESS = $\pm .0625$
 TOLERANCIAL VALUES = $\pm 1/32"$
 - ALL VALUES \pm OVERALL -

CONFIDENTIAL:
 ALL DESIGN RIGHTS RESERVED
 THE INFORMATION, DATA, DESIGN, AND DRAWINGS EMBODIED IN THIS DOCUMENT AND ALL REPRODUCTIONS THEREOF ARE THE EXCLUSIVE PROPERTY OF DIVERSIFIED WOODCRAFTS, INC.

THESE DOCUMENTS ARE SUPPLIED WITH THE UNDERSTANDING THAT THEY WILL NOT BE DISCLOSED TO THIRD PARTIES WITHOUT WRITTEN CONSENT OF DIVERSIFIED WOODCRAFTS, INC. ANY REPRODUCTION IN PART OR WHOLE WITHOUT WRITTEN CONSENT IS SUBJECT TO LEGAL ACTION.

DWN BY:	EMK	DATE DWN:	11/11/14
APR BY:		DATE APR:	
APR BY:		DATE APR:	



300 South Krueger Street
 Suring, WI 54174
diversifiedwoodcrafts.com

TITLE:
 XL MOBILE STORAGE CABINET
 ASSEMBLY INSTRUCTIONS

DRAWING NUMBER:

MSSC-200

SCALE:

NTS

SHEET:

5 OF 5

REVISION:

REV A