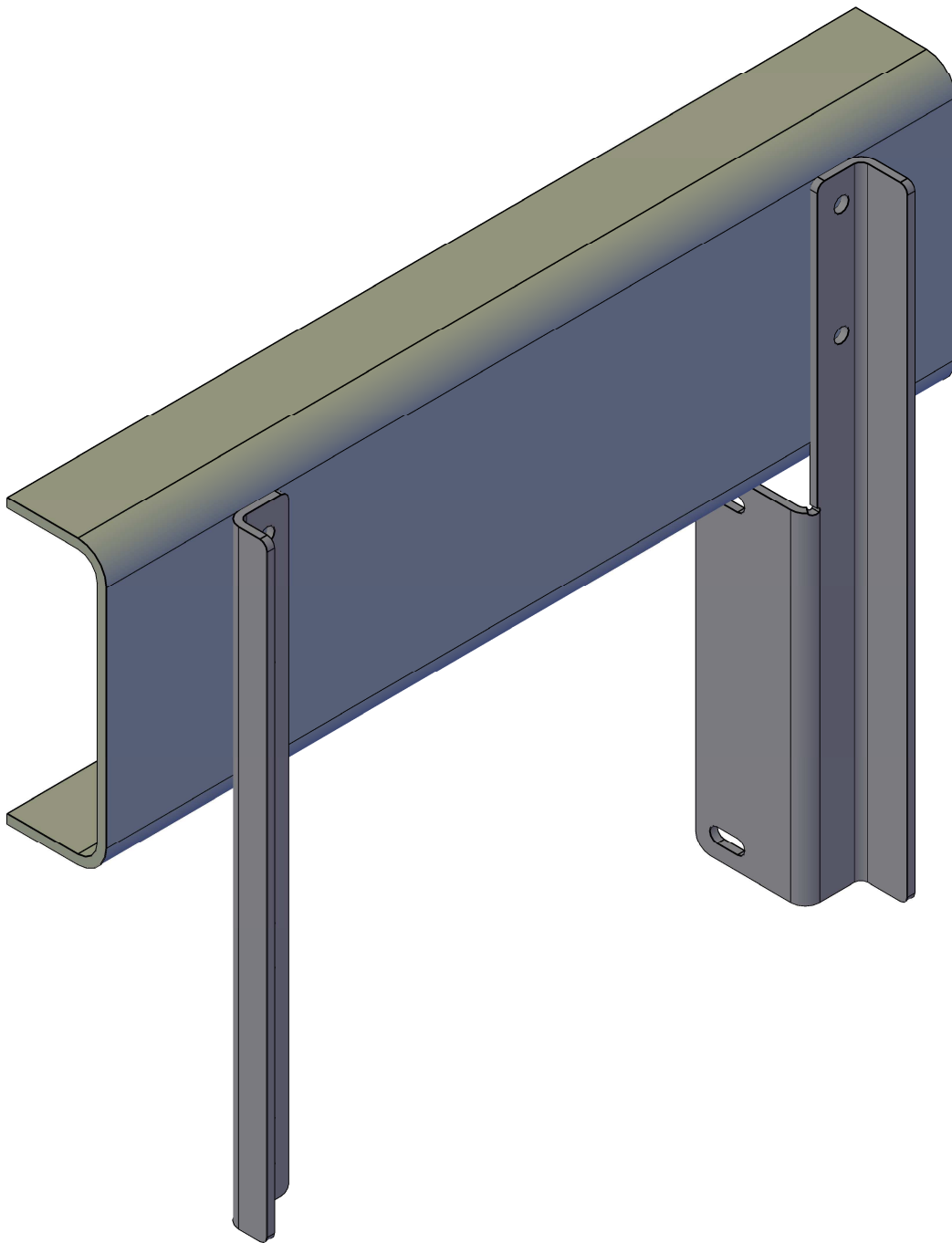


DIESEL EMISSIONS SERVICE

RETROFIT AND REPOWER SPECIALISTS

Portland | Redding | Oakland | Ontario



DES M5010 HORIZONTAL MOUNTING KIT FOR SCP17-23

ALL INSTALLATION INSTRUCTIONS AND GUIDELINES MUST BE THOROUGHLY READ AND UNDERSTOOD BEFORE INSTALLING A DIESEL EMISSIONS SERVICE PRODUCT



PRODUCT GUIDELINES

Diesel Emissions Service recommends its products be installed by a trained technician with proper tools and safety equipment. In addition all Diesel Emissions Service mounting brackets should be installed using good judgment and sound mechanical principles. Since all installations are unique, it is the sole responsibility of the installer to determine the best fit and function of the DPF mounting brackets.

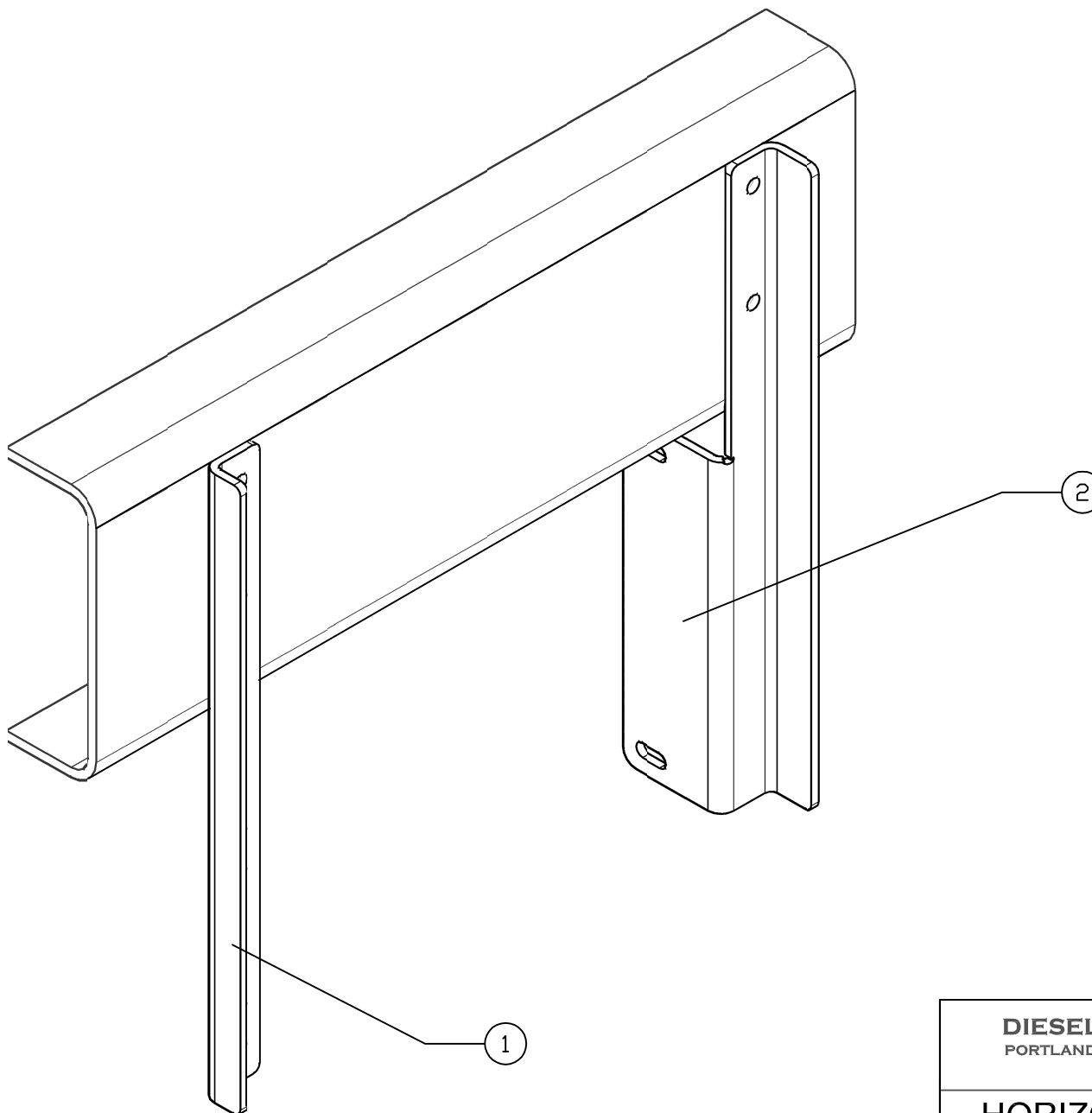
PRODUCT SAFETY

Diesel Emissions Service products are designed for “ON-ROAD” applications only. Modifications to any Diesel Emissions Service product are not recommended and can compromise the bracket performance. Diesel Emissions Service claims no liability or responsibility for the improper application or installation of its products.

PRODUCT WARRANTY

Diesel Emissions Service warrants to the original purchaser of its products that such products will be free from defects in material and workmanship under normal use. Diesel Emissions Service’s obligation under this warranty is solely and exclusively limited to repair and or replacement, at Diesel Emissions Service option, of the product (or components thereof) which Diesel Emissions Service’s examination proves to its satisfaction to be defective. Diesel Emissions Service SHALL HAVE NO OBLIGATION FOR CONSEQUENTIAL DAMAGES TO PERSONAL OR REAL PROPERTY, OR FOR INJURY TO ANY PERSON.

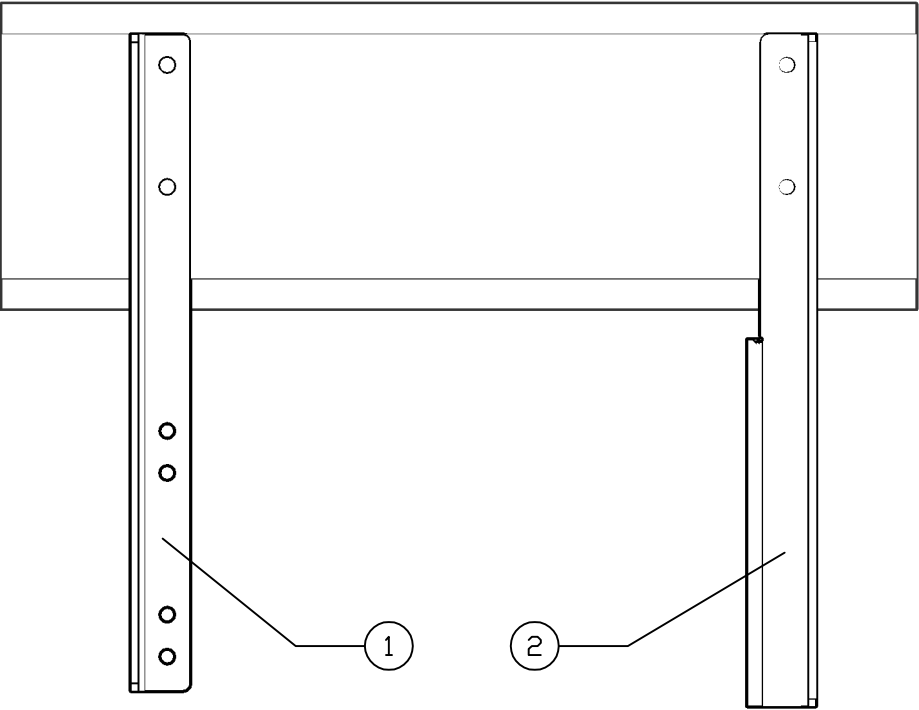
This warranty does not apply to products which have been subject to improper use, accident, negligence, abuse or misuse.



ITEM	QTY	COMPONENT DESCRIPTION
1	1	OUTSIDE MOUNTING BRACKET
2	1	INLET MOUNTING ANGLE

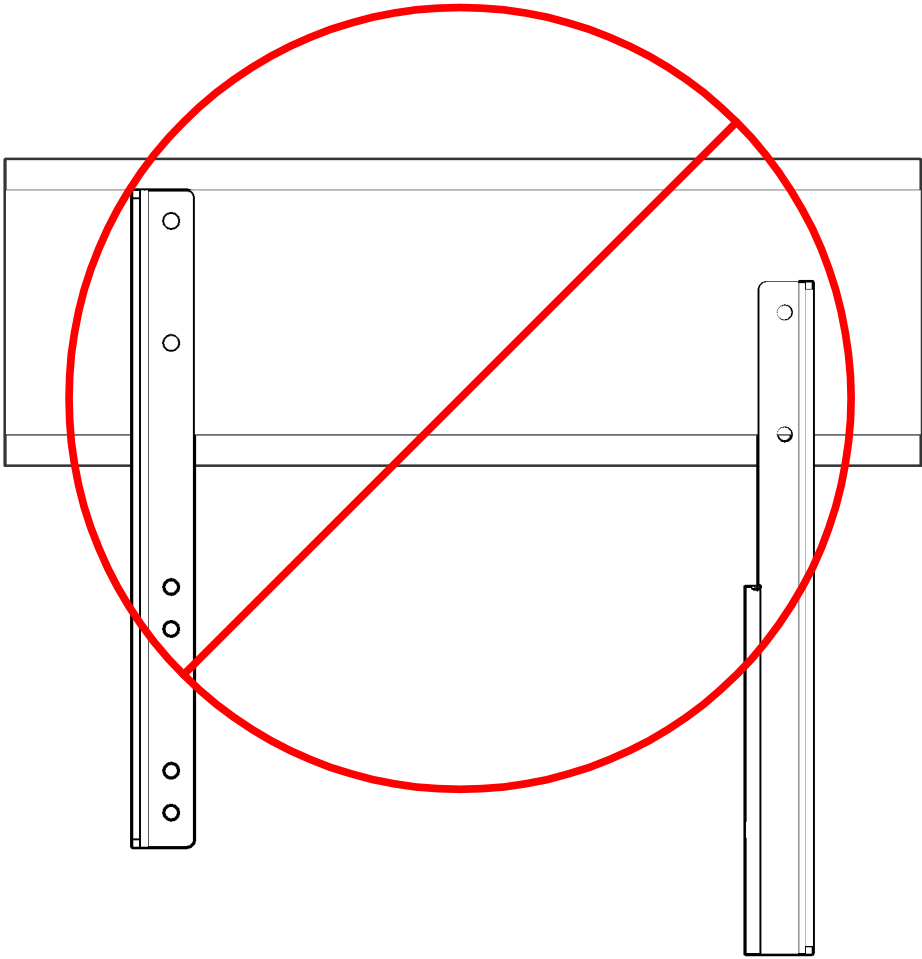
DIESEL EMISSIONS SERVICE PORTLAND REDDING OAKLAND ONTARIO 888-792-2922		
HORIZONTAL MOUNTING KIT FOR SCP17-23		
Size A	Drawing No. DES M5010	Rev
Scale NOT TO SCALE	CAD File	Sheet 1 OF 4


CORRECT



OUTSIDE FRAME BRACKET (1) AND INLET MOUNTING ANGLE (2) MUST BE PARALLEL WITH ONE ANOTHER AND PERPENDICULAR TO FRAME RAIL

INCORRECT



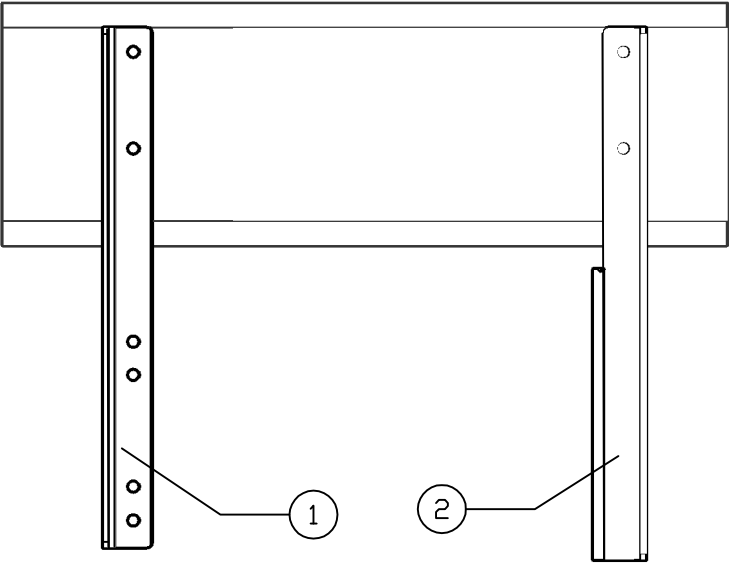
 FAILURE TO PROPERLY INSTALL DES M5010 BRACKETS CAN RESULT IN BRACKET FAILURE AND OR DAMAGE TO FILTER

ITEM	QTY	COMPONENT DESCRIPTION
1	1	OUTSIDE MOUNTING BRACKET
2	1	INLET MOUNTING ANGLE

DIESEL EMISSIONS SERVICE
PORTLAND REDDING OAKLAND ONTARIO
888-792-2922

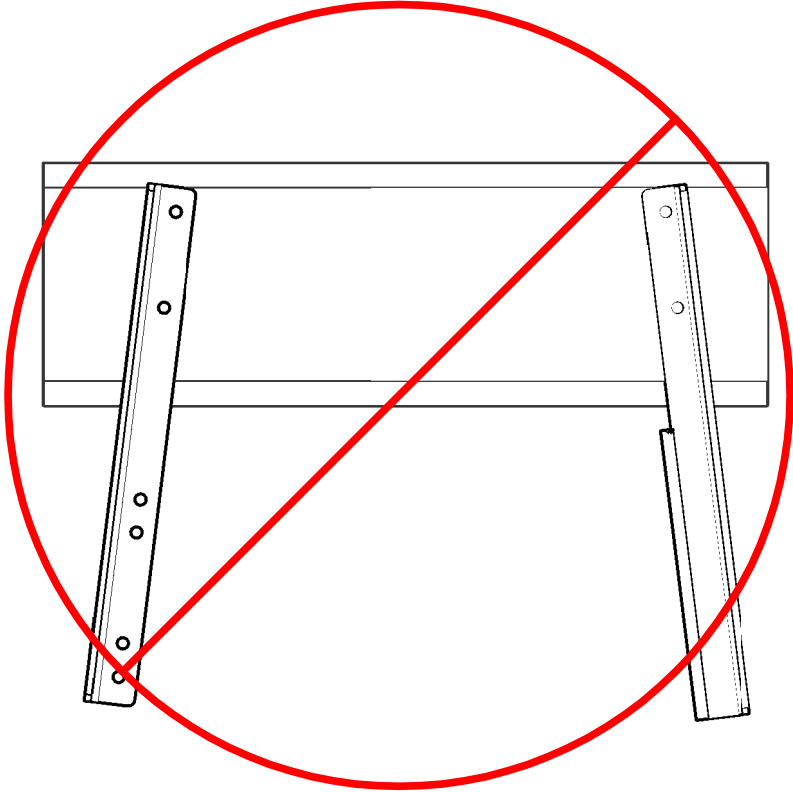
Size	A	Drawing No.	DES M5010
Scale	NOT TO SCALE	Sheet	2 of 4


CORRECT



OUTSIDE FRAME BRACKET (1) AND INLET MOUNTING ANGLE (2) MUST BE PARALLEL WITH ONE ANOTHER AND PERPENDICULAR TO FRAME RAIL

INCORRECT

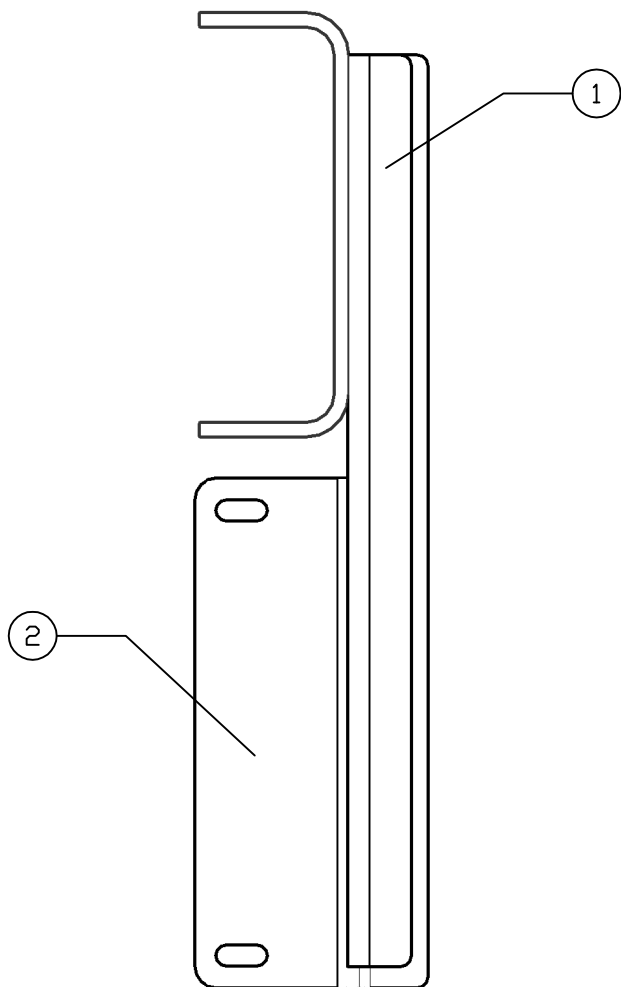


 FAILURE TO PROPERLY INSTALL DES M5010 BRACKETS CAN RESULT IN BRACKET FAILURE AND OR DAMAGE TO FILTER

ITEM	QTY	COMPONENT DESCRIPTION
1	1	OUTSIDE MOUNTING BRACKET
2	1	INLET MOUNTING ANGLE

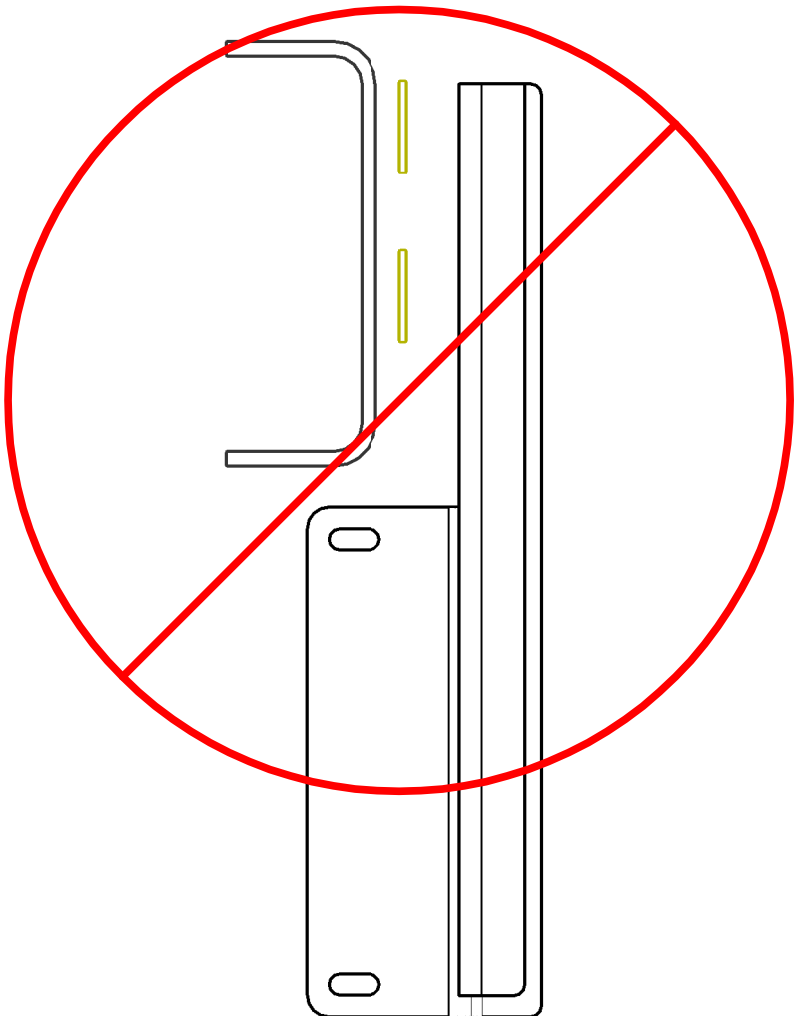
DIESEL EMISSIONS SERVICE PORTLAND REDDING OAKLAND ONTARIO 888-792-2922		
Size	A	Drawing No. DES M5010
Scale	NOT TO SCALE	Sheet 3 of 4

CORRECT



OUTSIDE FRAME BRACKET (1) AND INLET MOUNTING ANGLE (2) MUST SEAT FLUSH TO FRAME RAIL

INCORRECT



NEVER SPACE OUTSIDE FRAME BRACKET (1) OR INLET MOUNTING ANGLE (2) AWAY FROM FRAME RAIL

ITEM	QTY	COMPONENT DESCRIPTION
1	1	OUTSIDE MOUNTING BRACKET
2	1	INLET MOUNTING ANGLE

DIESEL EMISSIONS SERVICE
PORTLAND REDDING OAKLAND ONTARIO
888-792-2922

Size A	Drawing No. DES M5010
Scale NOT TO SCALE	Sheet 4 of 4