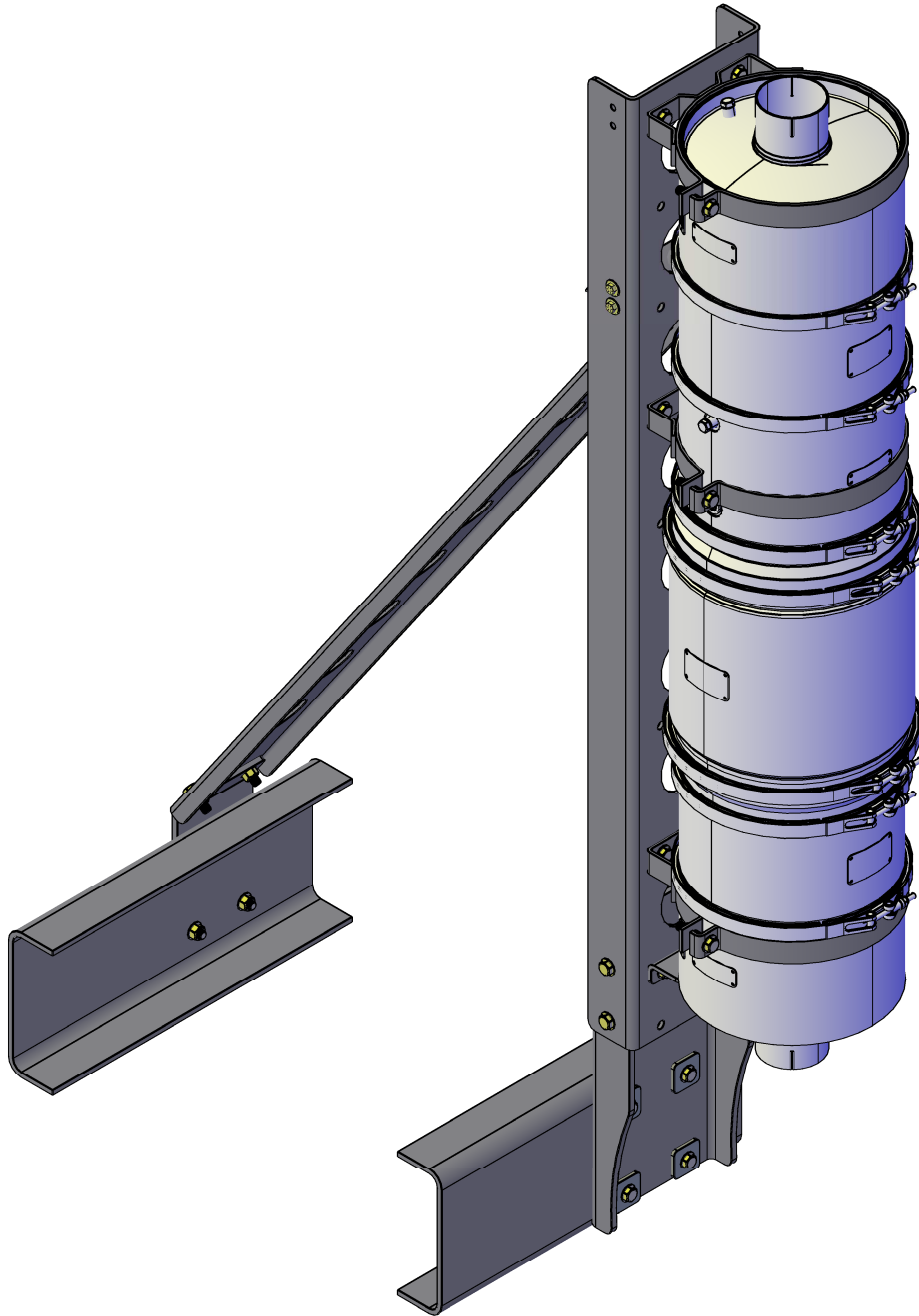


# DIESEL EMISSIONS SERVICE

RETROFIT AND REPOWER SPECIALISTS

**Portland | Redding | Oakland | Ontario**



**DES M9010 JOHNSON MATTHEY ADV CCRT**

**ALL INSTALLATION INSTRUCTIONS AND GUIDELINES MUST BE THOROUGHLY READ AND UNDERSTOOD BEFORE INSTALLING A DIESEL EMISSIONS SERVICE PRODUCT**



## **PRODUCT GUIDELINES**

**Diesel Emissions Service recommends its products be installed by a trained technician with proper tools and safety equipment. In addition all Diesel Emissions Service mounting brackets should be installed using good judgment and sound mechanical principles. Since all installations are unique, it is the sole responsibility of the installer to determine the best fit and function of the DPF mounting brackets.**

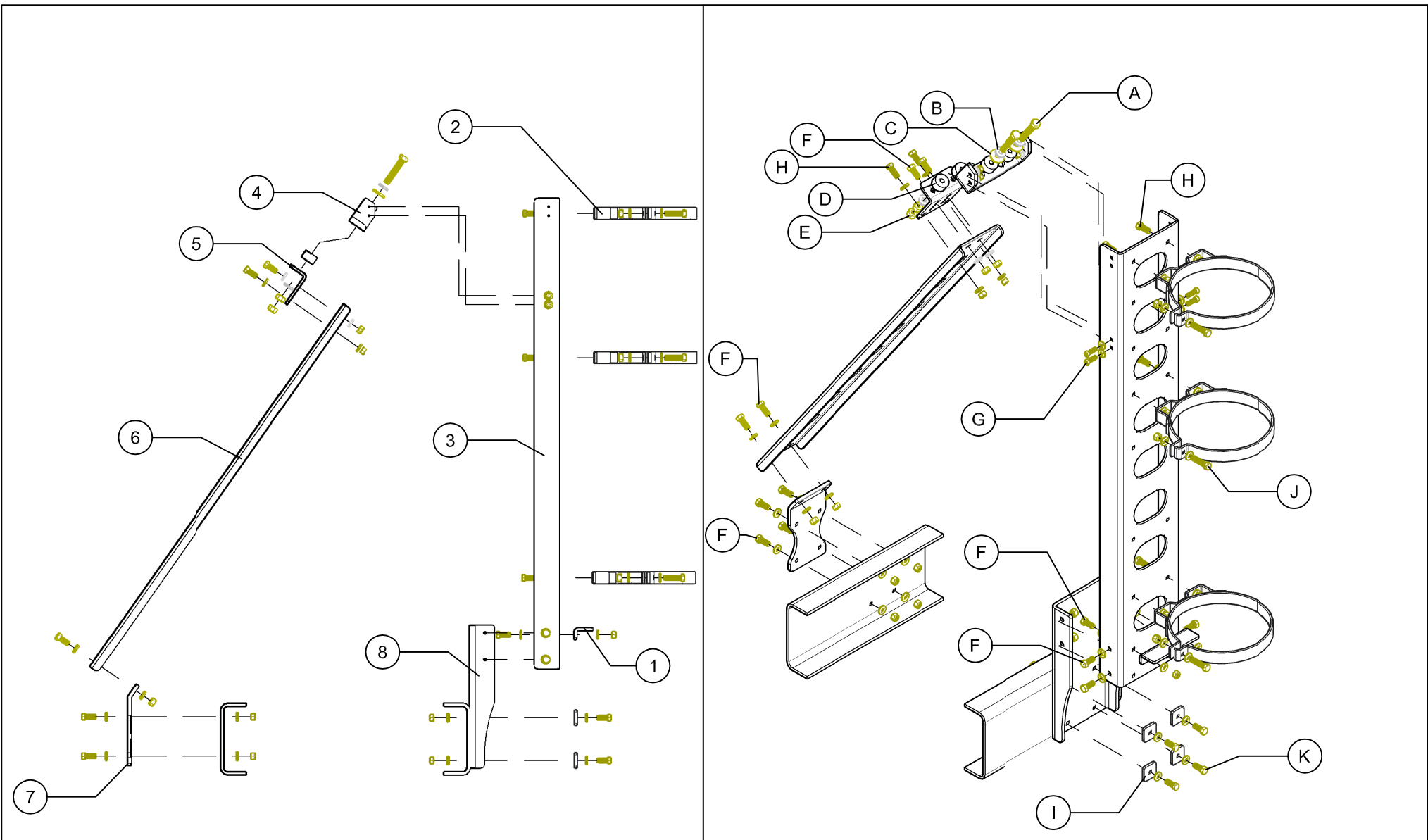
## **PRODUCT SAFETY**

**Diesel Emissions Service products are designed for “ON-ROAD” applications only. Modifications to any Diesel Emissions Service product are not recommended and can compromise the bracket performance. Diesel Emissions Service claims no liability or responsibility for the improper application or installation of its products.**

## **PRODUCT WARRANTY**

**Diesel Emissions Service warrants to the original purchaser of its products that such products will be free from defects in material and workmanship under normal use. Diesel Emissions Service’s obligation under this warranty is solely and exclusively limited to repair and or replacement, at Diesel Emissions Service option, of the product (or components thereof) which Diesel Emissions Service’s examination proves to its satisfaction to be defective. Diesel Emissions Service SHALL HAVE NO OBLIGATION FOR CONSEQUENTIAL DAMAGES TO PERSONAL OR REAL PROPERTY, OR FOR INJURY TO ANY PERSON.**

**This warranty does not apply to products which have been subject to improper use, accident, negligence, abuse or misuse.**

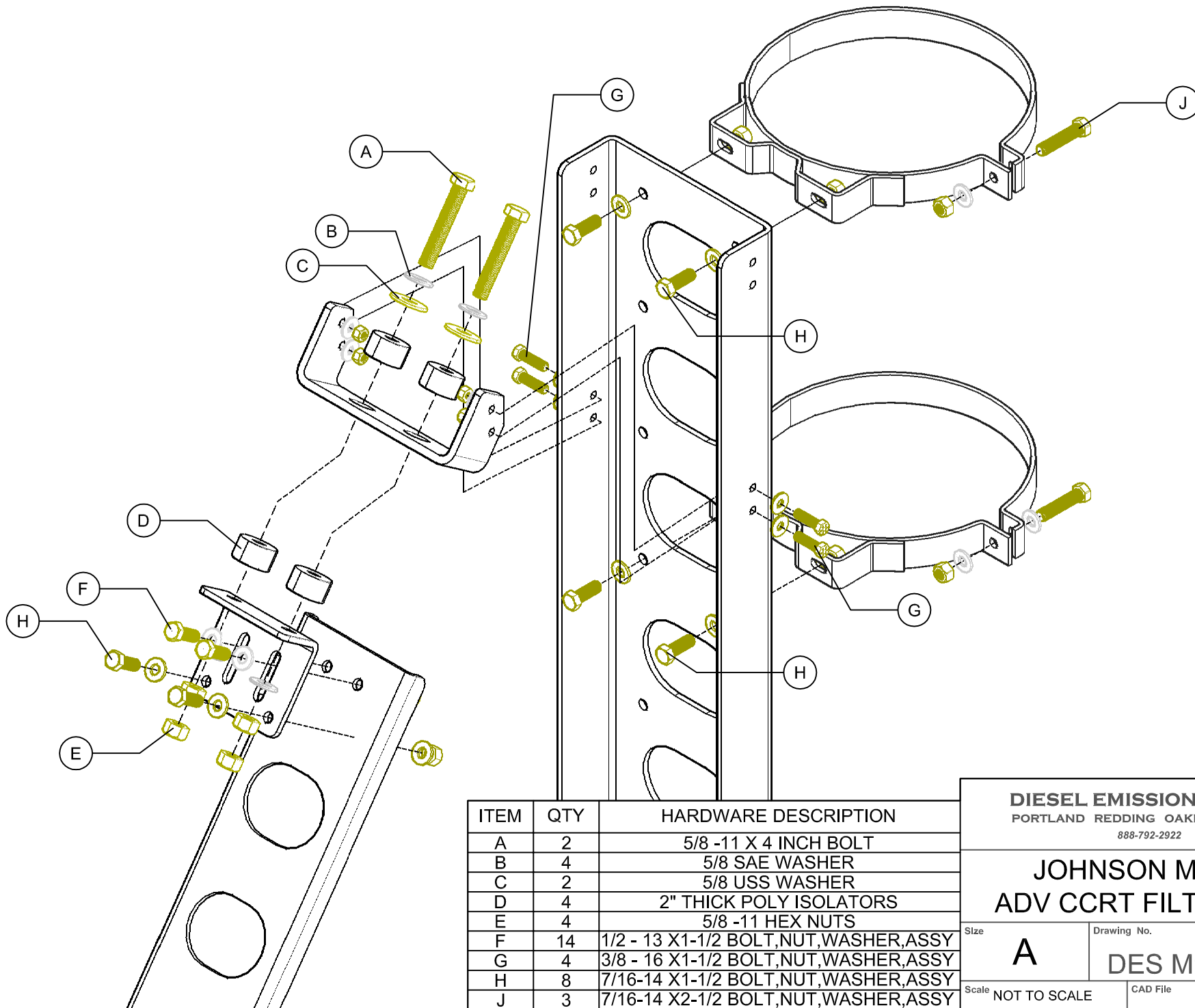


ITEM	QTY	COMPONENT DESCRIPTION	ITEM	QTY	HARDWARE DESCRIPTION
1	1	FILTER SUPPORT	A	2	5/8 -11 X 4 INCH BOLT
2	3	12.84 DIA. FILTER MTG BAND	B	4	5/8 SAE WASHER
3	1	VERTICAL STANCHION	C	2	5/8 USS WASHER
4	1	UPPER ISOLATOR BRACKET	D	4	2" THICK POLY ISOLATORS
5	1	UPPER CROSS BAR BRACKET	E	4	5/8 -11 HEX NUTS
6	1	CROSS BAR	F	14	1/2 - 13 X1-1/2 BOLT,NUT,WASHER,ASSY
7	1	LOWER CROSS BAR BRACKET	G	4	3/8 - 16 X1-1/2 BOLT,NUT,WASHER,ASSY
8	1	FRAME MOUNT STANCHION SUPPORT	H	8	7/16-14 X1-1/2 BOLT,NUT,WASHER,ASSY
			I	4	1/4 X 2 X 2 BLACK SQUARE WASHER
			J	3	7/16-14 X2-1/2 BOLT,NUT,WASHER,ASSY
			K	4	1/2 - 13 X1-3/4 BOLT,NUT,WASHER,ASSY

**DIESEL EMISSIONS SERVICE**  
 PORTLAND REDDING OAKLAND ONTARIO  
 888-792-2922

# **JOHNSON MATTHEY** **ADV CCRT FILTER MOUNT**

Size	Drawing No.	Rev
<b>A</b>	<b>DES M9010</b>	
Scale NOT TO SCALE	CAD File	Sheet 1 OF 7

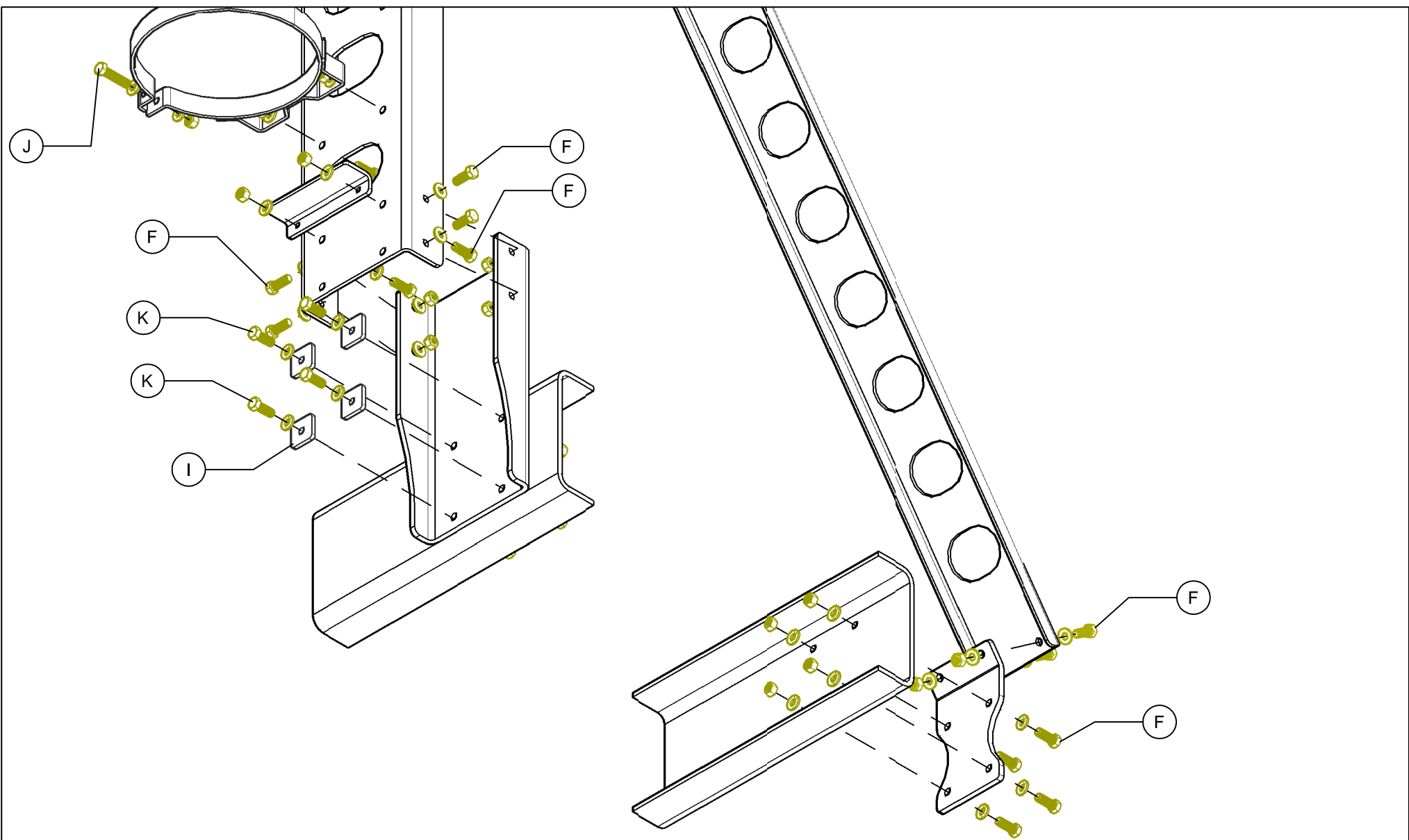


ITEM	QTY	HARDWARE DESCRIPTION
A	2	5/8 -11 X 4 INCH BOLT
B	4	5/8 SAE WASHER
C	2	5/8 USS WASHER
D	4	2" THICK POLY ISOLATORS
E	4	5/8 -11 HEX NUTS
F	14	1/2 - 13 X1-1/2 BOLT,NUT,WASHER,ASSY
G	4	3/8 - 16 X1-1/2 BOLT,NUT,WASHER,ASSY
H	8	7/16-14 X1-1/2 BOLT,NUT,WASHER,ASSY
J	3	7/16-14 X2-1/2 BOLT,NUT,WASHER,ASSY

**DIESEL EMISSIONS SERVICE**  
 PORTLAND REDDING OAKLAND ONTARIO  
 888-792-2922

# **JOHNSON MATTHEY** **ADV CCRT FILTER MOUNT**

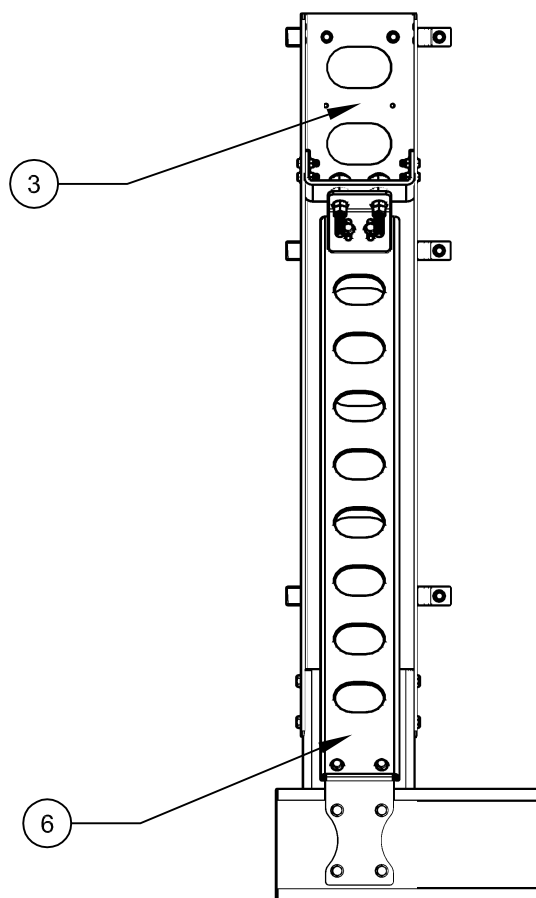
Size	Drawing No.	Rev
<b>A</b>	<b>DES M9010</b>	
Scale NOT TO SCALE	CAD File	Sheet 2 OF 7



ITEM	QTY	HARDWARE DESCRIPTION
F	14	1/2 - 13 X1-1/2 BOLT,NUT,WASHER,ASSY
I	4	1/4 X 2 X 2 BLACK SQUARE WASHER
J	3	7/16-14 X2-1/2 BOLT,NUT,WASHER,ASSY
K	4	1/2 - 13 X1-3/4 BOLT,NUT,WASHER,ASSY

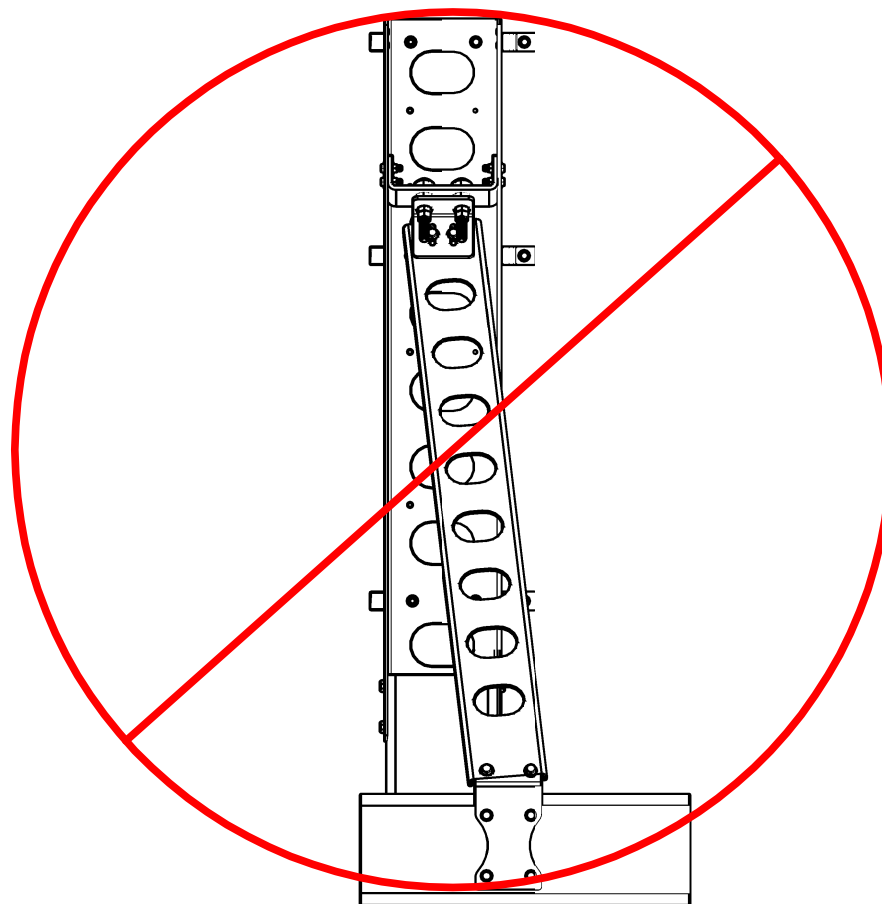
<b>DIESEL EMISSIONS SERVICE</b> PORTLAND REDDING OAKLAND ONTARIO 888-792-2922		
<b>JOHNSON MATTHEY ADV CCRT FILTER MOUNT</b>		
Size <b>A</b>	Drawing No. <b>DES M9010</b>	Rev
Scale NOT TO SCALE	CAD File	Sheet 3 OF 7

## CORRECT



CROSS BAR(6) MUST BE PLACED  
PARALLEL TO VERTICAL STANCHION(3)

## INCORRECT



FAILURE TO INSTALL CROSS BAR (6) PARALLEL  
TO VERTICAL STANCHION (3) CAN COMPROMISE  
BRACKET INTEGRITY AND RESULT IN BRACKET  
FAILURE AND OR DAMAGE TO FILTER!

ITEM	QTY	COMPONENT DESCRIPTION
3	1	VERTICAL STANCHION
6	1	CROSS BAR

**DIESEL EMISSIONS SERVICE**  
PORTLAND REDDING OAKLAND ONTARIO  
888-792-2922

Drawing No.

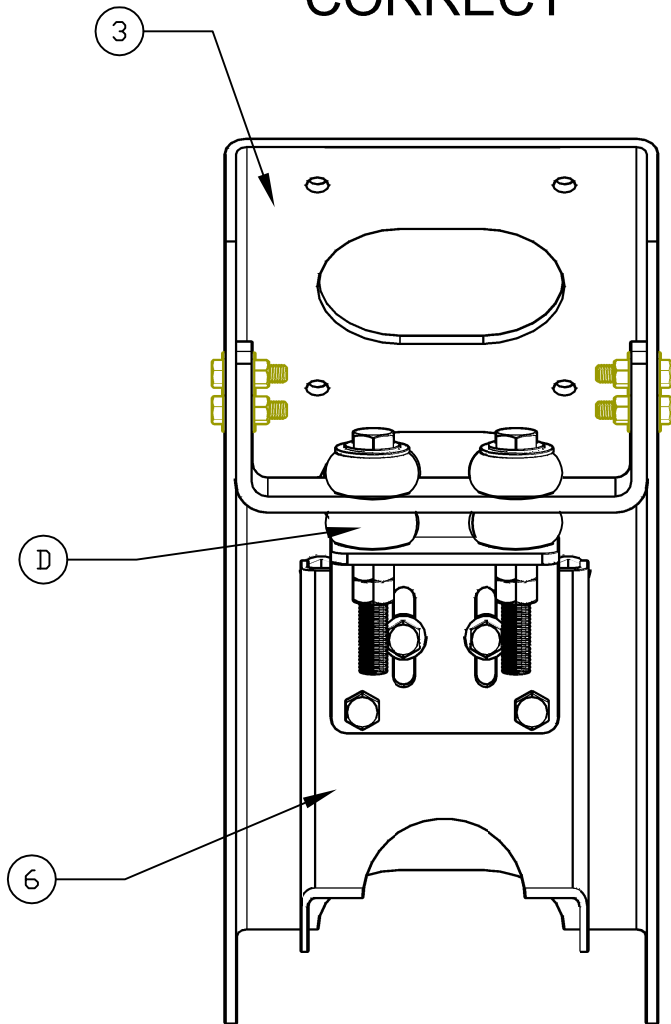
**DES M9010**

Scale NOT TO SCALE

Size A

Sheet  
4 OF 7

# CORRECT

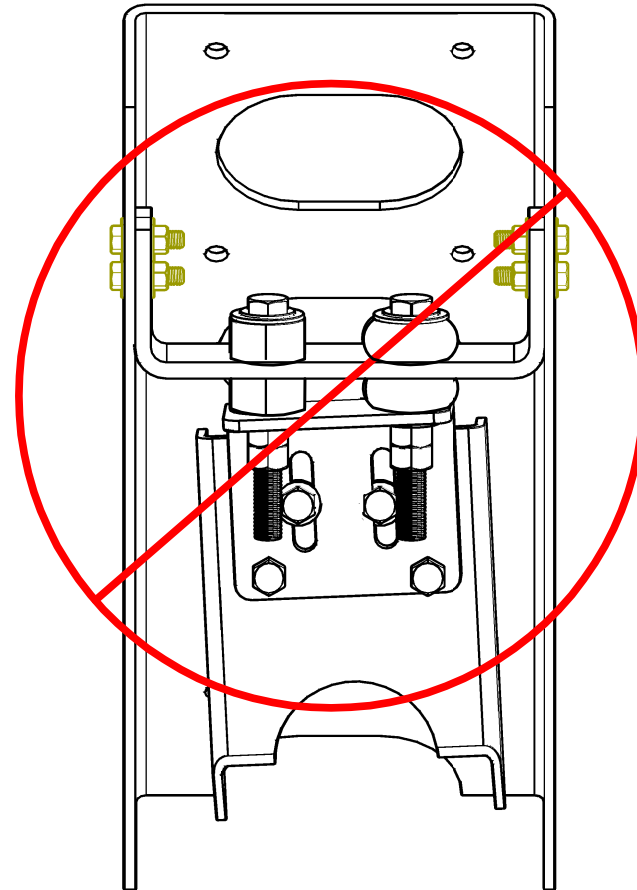


ISOLATORS (D) MUST BE COMPRESSED EQUALLY



ISOLATORS (D) SHOULD BE COMPRESSED APPROXIMATELY 25-30%

# INCORRECT



IMPROPER ISOLATOR COMPRESSION CAN LEAD TO ISOLATOR AND BRACKET FAILURE

**DIESEL EMISSIONS SERVICE**  
PORTLAND REDDING OAKLAND ONTARIO  
888-792-2922

Drawing No.

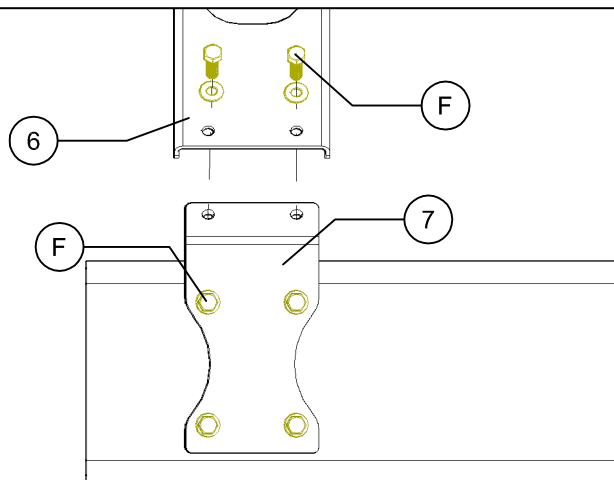
## DES M9010

Scale NOT TO SCALE

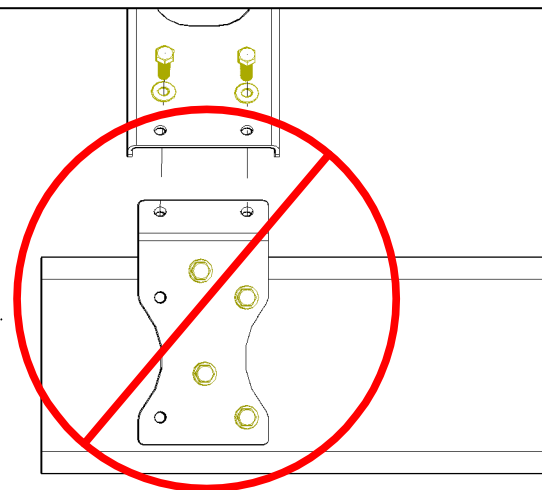
Size A

Sheet 5 OF 7

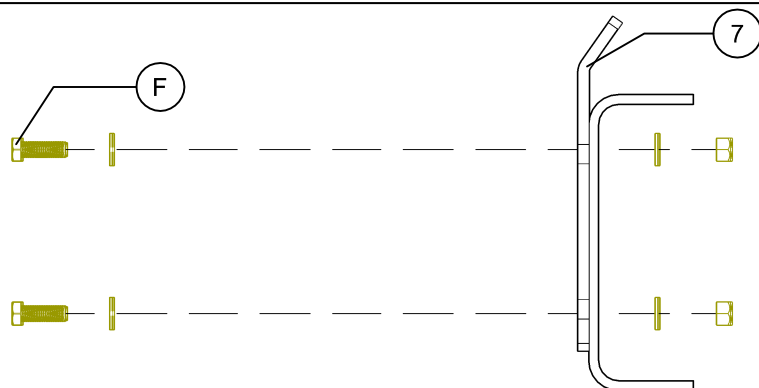
ITEM	QTY	COMPONENT DESCRIPTION	ITEM	QTY	HARDWARE DESCRIPTION
3	1	VERTICAL STANCHION	D	4	2" THICK POLY ISOLATORS
6	1	CROSS BAR			



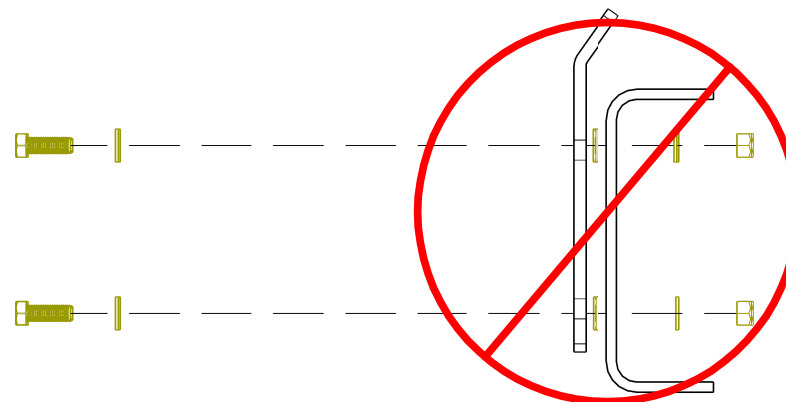
USE ALL PROVIDED GRADE 8 FASTENERS  
AND MANUFACTURED HOLES



DO NOT ALTER BRACKET OR  
FASTENER HOLE LOCATIONS



LOWER CROSS BAR BRACKET (7) MUST  
SEAT FLUSH TO FRAME RAIL



NEVER SPACE LOWER CROSS BAR  
BRACKET (7) AWAY FROM FRAME RAIL

**DIESEL EMISSIONS SERVICE**  
PORTLAND REDDING OAKLAND ONTARIO  
888-792-2922

Drawing No.

**DES M9010**

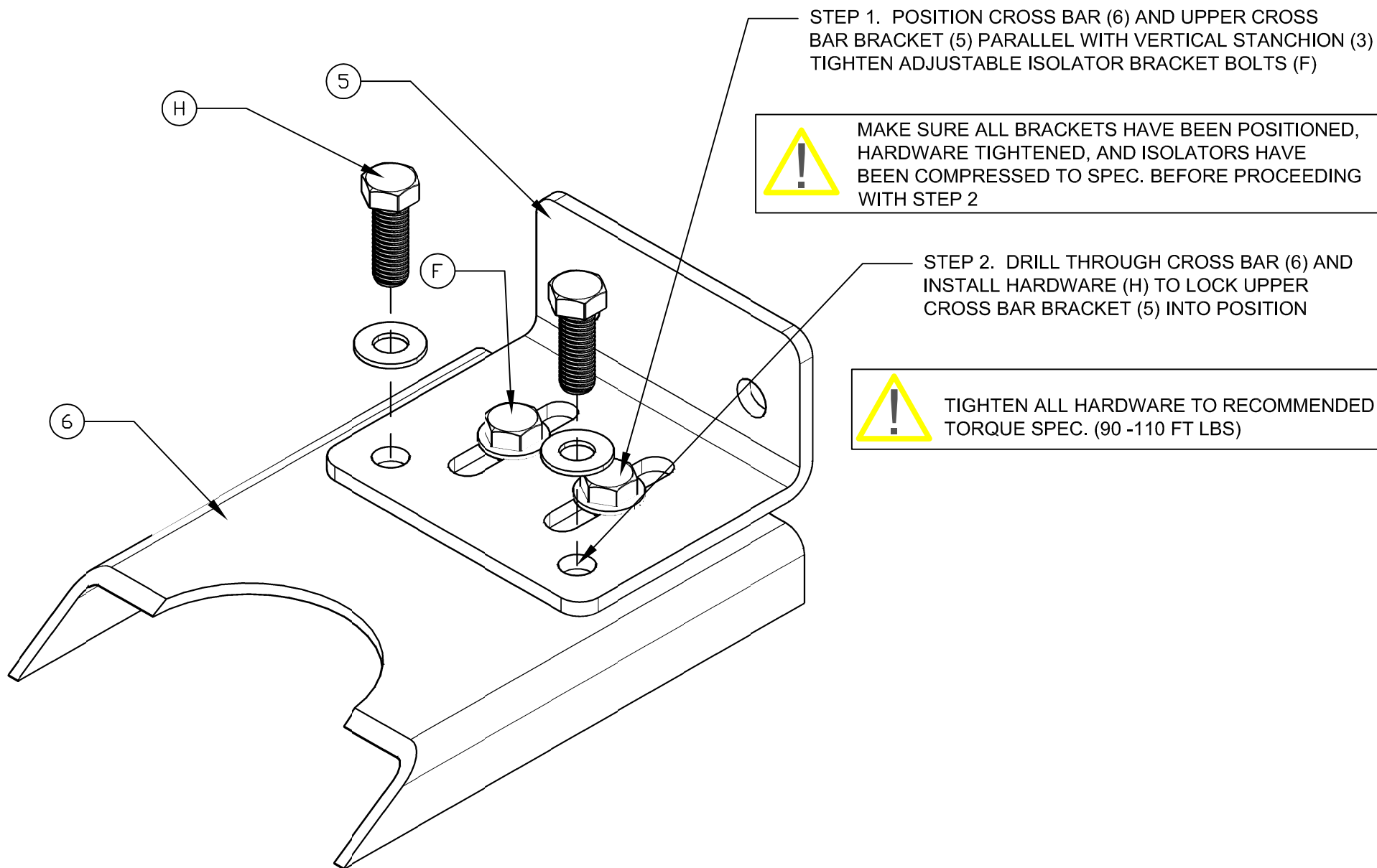
Scale NOT TO SCALE

Size A

Sheet  
6 OF 7

ITEM	QTY	COMPONENT DESCRIPTION	ITEM	QTY	HARDWARE DESCRIPTION
6	1	CROSS BAR	F	14	1/2 - 13 X1-1/2 BOLT,NUT,WASHER,ASSY
7	1	LOWER CROSS BAR BRACKET			





**DIESEL EMISSIONS SERVICE**  
 PORTLAND REDDING OAKLAND ONTARIO  
 888-792-2922

Drawing No.

**DES M9010**

Scale NOT TO SCALE

Size A

Sheet  
7 OF 7

ITEM	QTY	COMPONENT DESCRIPTION	ITEM	QTY	HARDWARE DESCRIPTION
5	1	UPPER CROSS BAR BRACKET	F	14	1/2 - 13 X1-1/2 BOLT,NUT,WASHER,ASSY
6	1	CROSS BAR	H	8	7/16-14 X1-1/2 BOLT,NUT,WASHER,ASSY