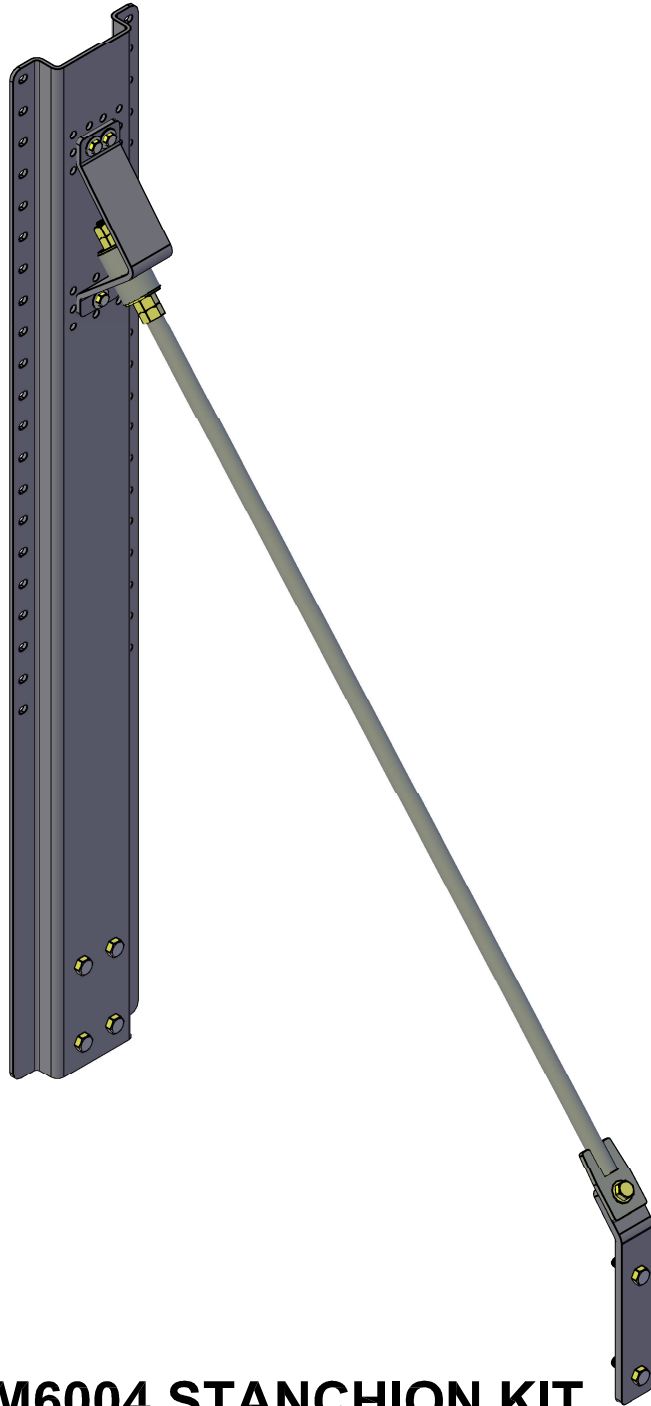


# DIESEL EMISSIONS SERVICE

RETROFIT AND REPOWER SPECIALISTS

**Portland | Redding | Oakland | Ontario**



## DES VM6004 STANCHION KIT

ALL INSTALLATION INSTRUCTIONS AND GUIDELINES MUST BE THOROUGHLY READ AND UNDERSTOOD BEFORE INSTALLING A DIESEL EMISSIONS SERVICE PRODUCT



## **PRODUCT GUIDELINES**

**Diesel Emissions Service recommends its products be installed by a trained technician with proper tools and safety equipment. In addition all Diesel Emissions Service mounting brackets should be installed using good judgment and sound mechanical principles. Since all installations are unique, it is the sole responsibility of the installer to determine the best fit and function of the DPF mounting brackets.**

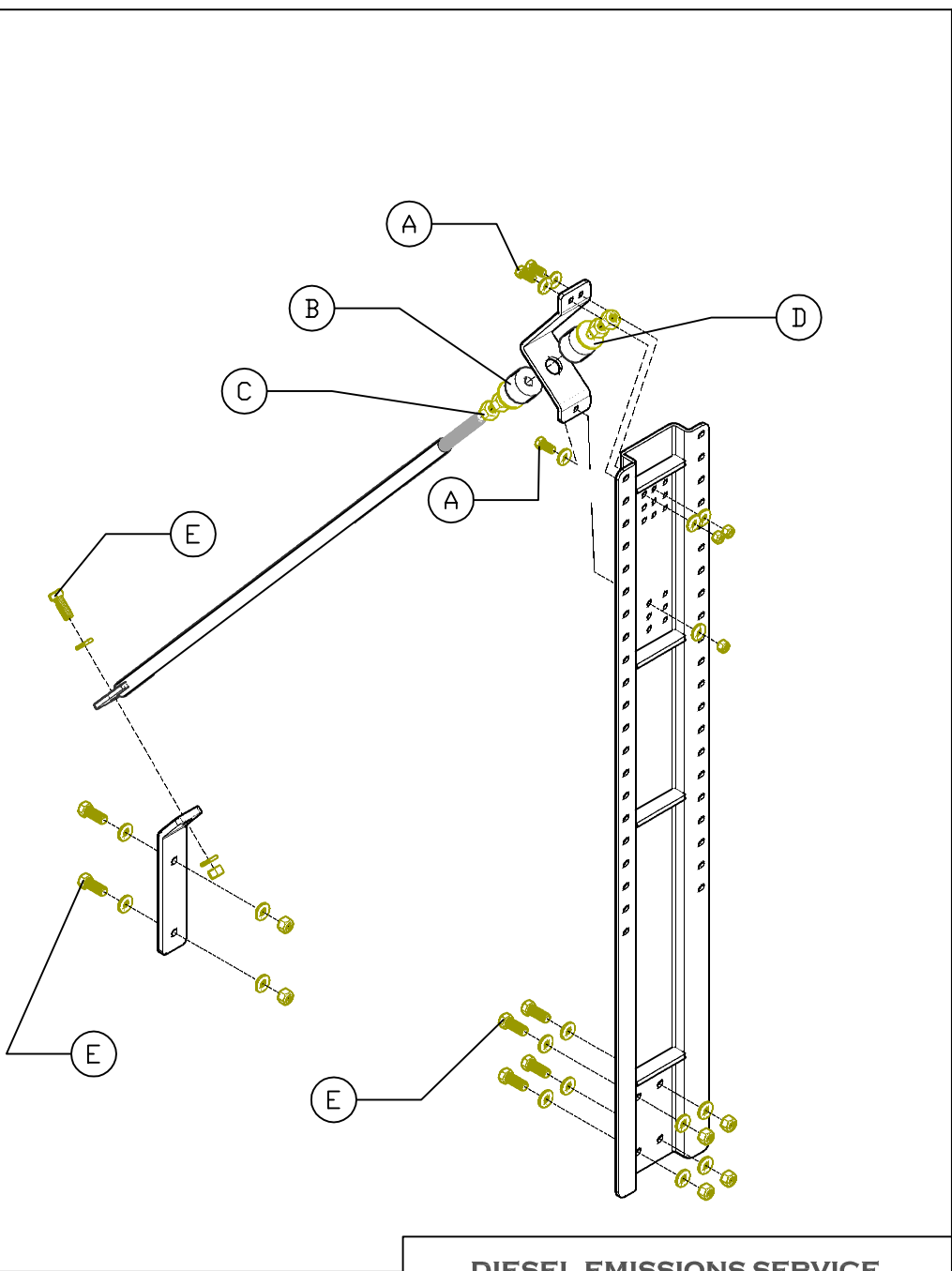
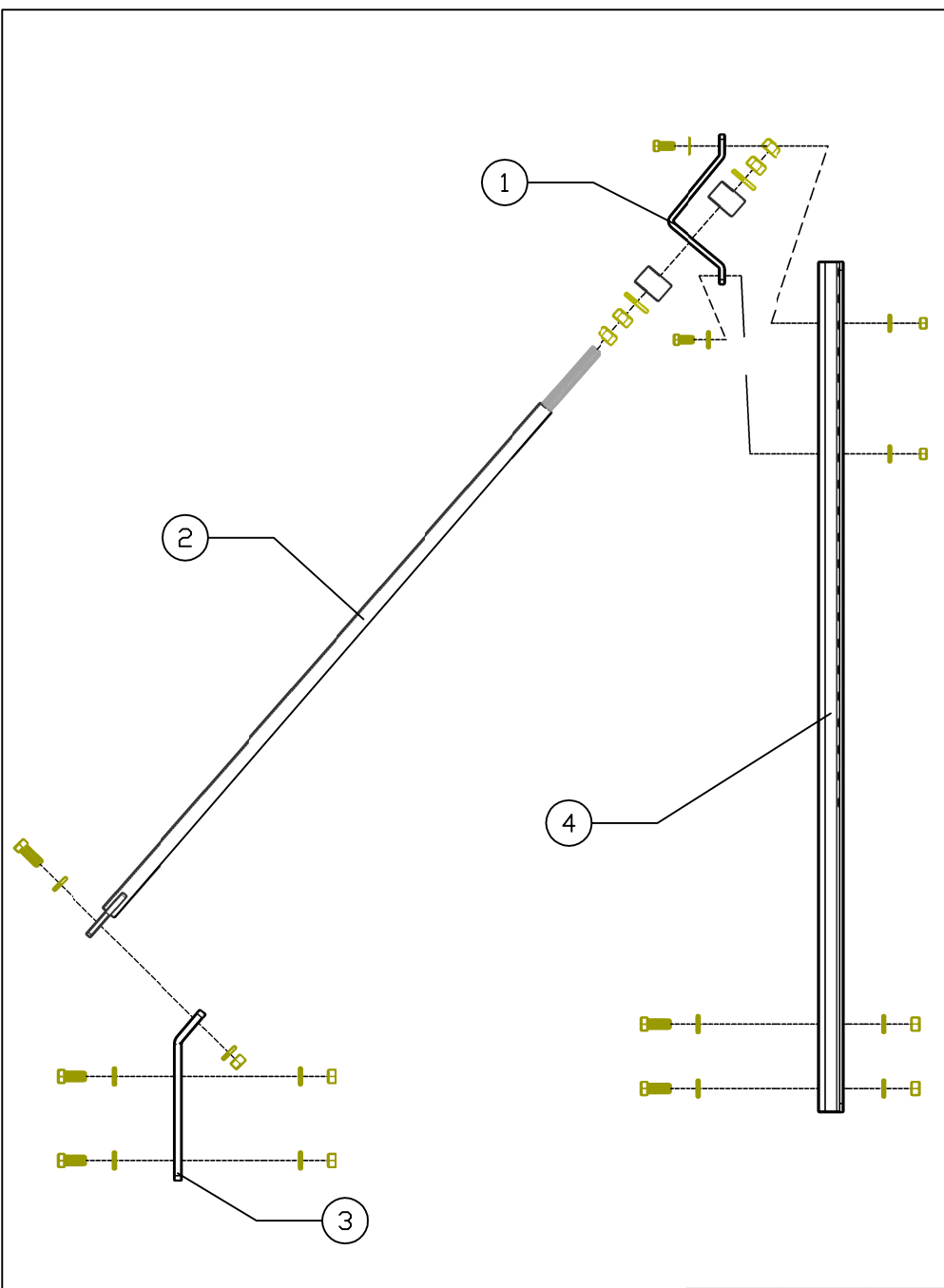
## **PRODUCT SAFETY**

**Diesel Emissions Service products are designed for “ON-ROAD” applications only. Modifications to any Diesel Emissions Service product are not recommended and can compromise the bracket performance. Diesel Emissions Service claims no liability or responsibility for the improper application or installation of its products.**

## **PRODUCT WARRANTY**

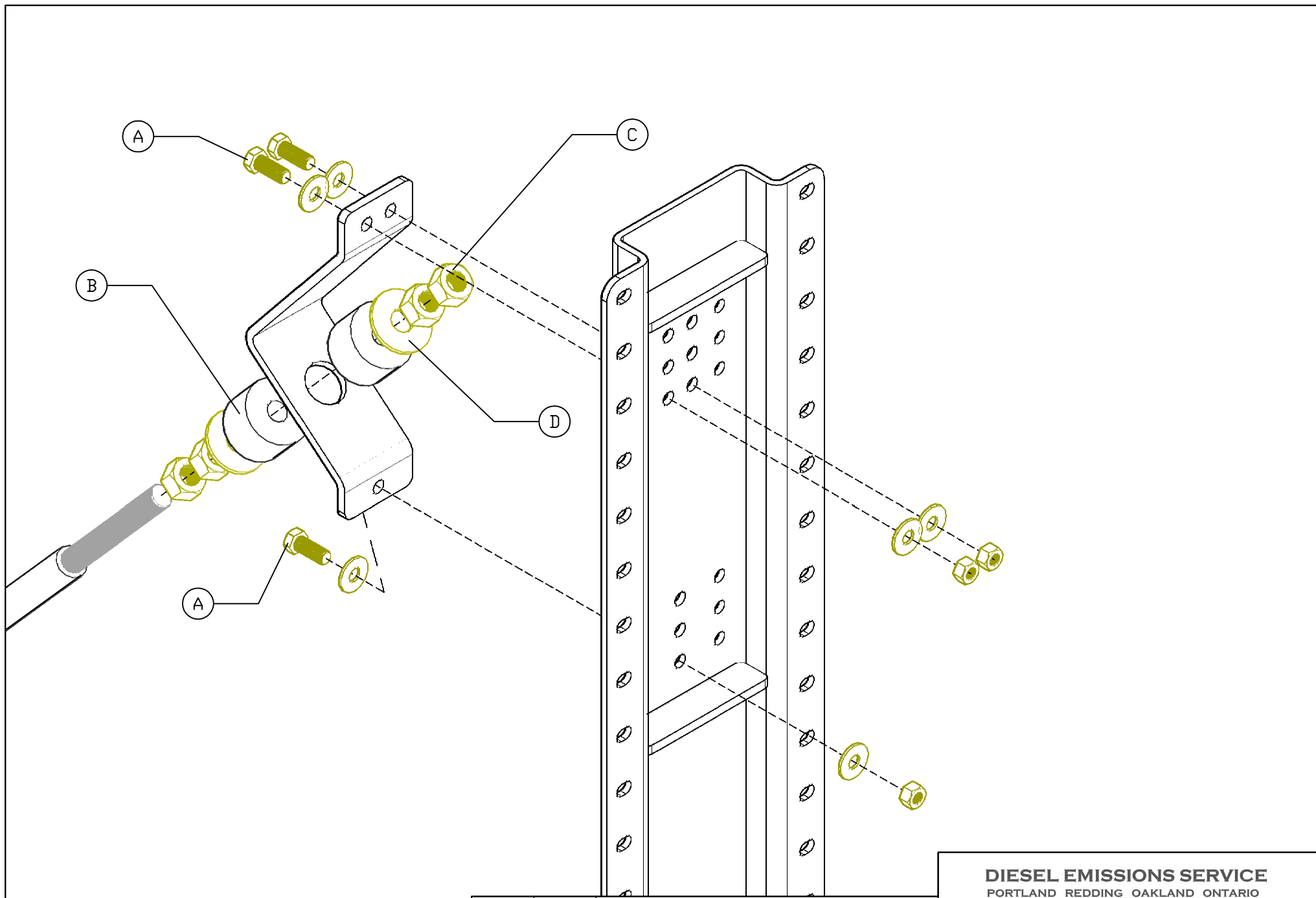
**Diesel Emissions Service warrants to the original purchaser of its products that such products will be free from defects in material and workmanship under normal use. Diesel Emissions Service’s obligation under this warranty is solely and exclusively limited to repair and or replacement, at Diesel Emissions Service option, of the product (or components thereof) which Diesel Emissions Service’s examination proves to its satisfaction to be defective. Diesel Emissions Service SHALL HAVE NO OBLIGATION FOR CONSEQUENTIAL DAMAGES TO PERSONAL OR REAL PROPERTY, OR FOR INJURY TO ANY PERSON.**

**This warranty does not apply to products which have been subject to improper use, accident, negligence, abuse or misuse.**



ITEM	QTY	COMPONENT DESCRIPTION	ITEM	QTY	HARDWARE DESCRIPTION
1	1	UPPER ISOLATOR BRACKET	A	3	3/8- 16 X 1-1/2 BOLT,NUT,WASHER,ASSY
2	1	CROSS BAR	B	2	POLY ISOLATOR
3	1	LOWER CROSS BAR BRACKET	C	4	5/8 HEX NUT
4	1	56" STANCHION	D	2	5/8 USS WASHER
			E	7	1/2- 13 X 1-3/4 BOLT,NUT,WASHER,ASSY

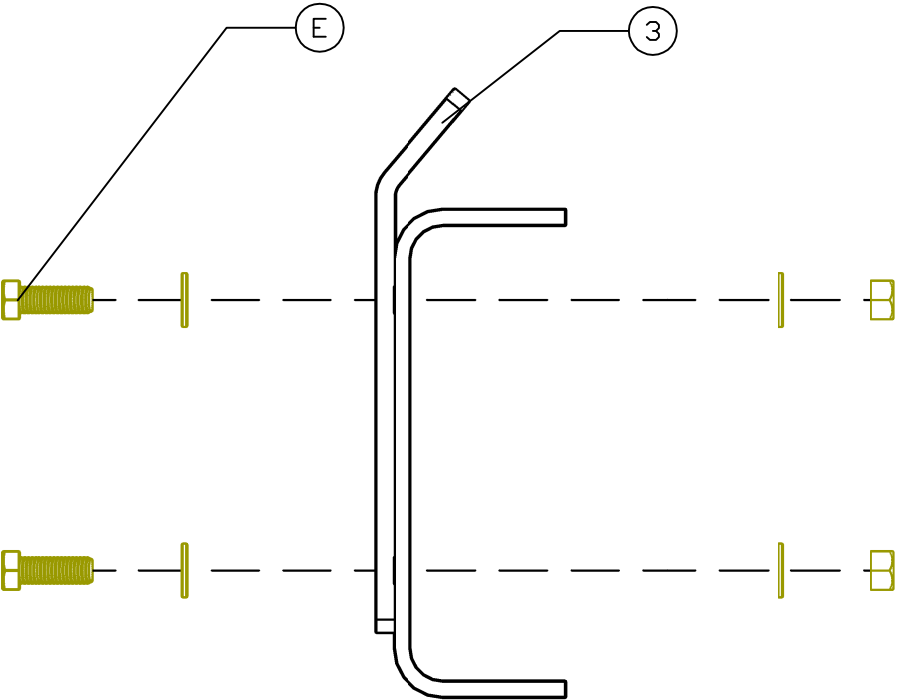
<b>DIESEL EMISSIONS SERVICE</b> PORTLAND REDDING OAKLAND ONTARIO 888-792-2922		
Size <b>A</b>	Drawing No. <b>DES VM6004</b>	
Scale NOT TO SCALE	CAD File	Sheet 1 OF 4



ITEM	QTY	HARDWARE DESCRIPTION
A	3	3/8 -16 X 1-1/2 BOLT,NUT,WASHER,ASSY
B	2	POLY ISOLATOR
C	4	5/8 HEX NUT
D	2	5/8 USS WASHER

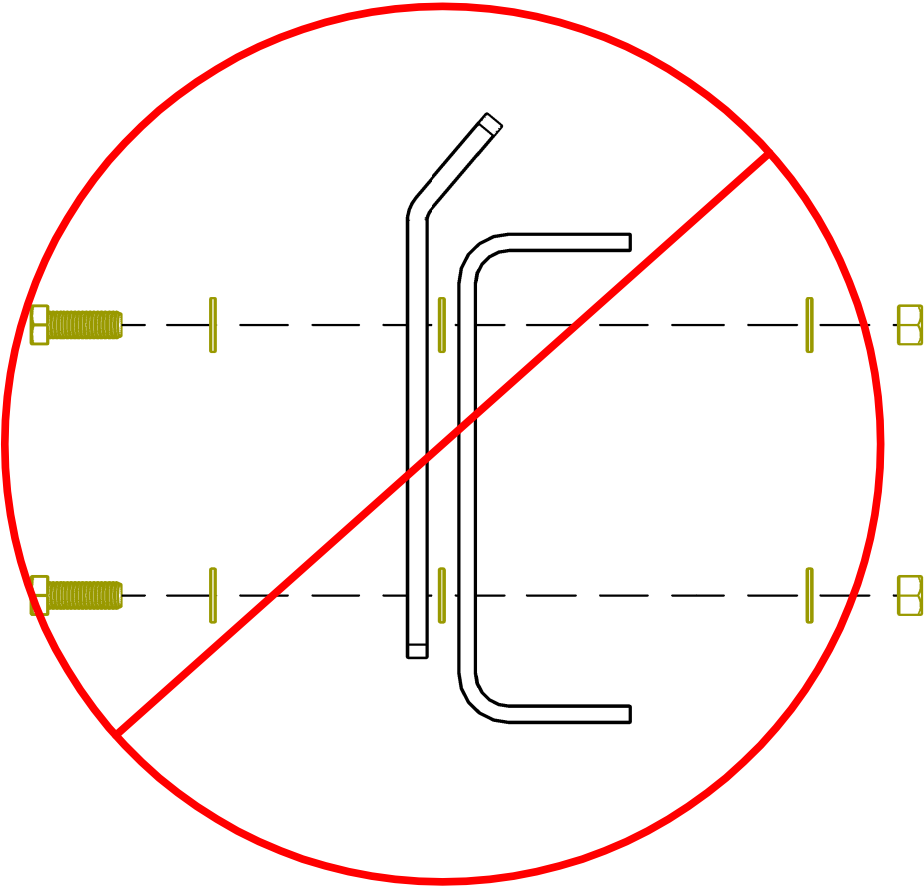
<b>DIESEL EMISSIONS SERVICE</b> PORTLAND REDDING OAKLAND ONTARIO 888-792-2922		
Size <b>A</b>	Drawing No. <b>DES VM6004</b>	
Scale NOT TO SCALE	CAD File	Sheet 2 of 4

CORRECT



LOWER CROSS BAR BRACKET (3) MUST SEAT FLUSH TO FRAME RAIL

INCORRECT



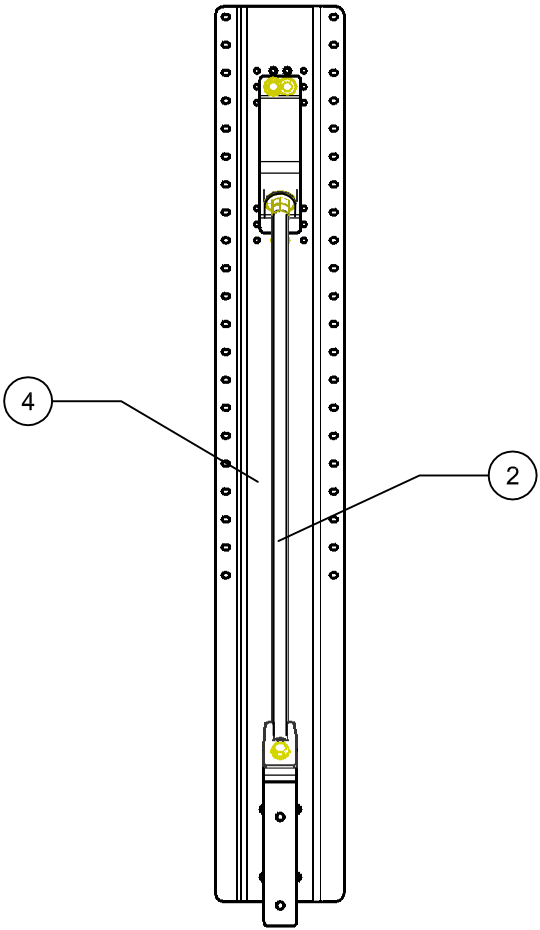
NEVER SPACE LOWER CROSS BAR BRACKET (3) AWAY FROM FRAME RAIL

**DIESEL EMISSIONS SERVICE**  
PORTLAND REDDING OAKLAND ONTARIO  
888-792-2922

Drawing No. **DES VM6004**

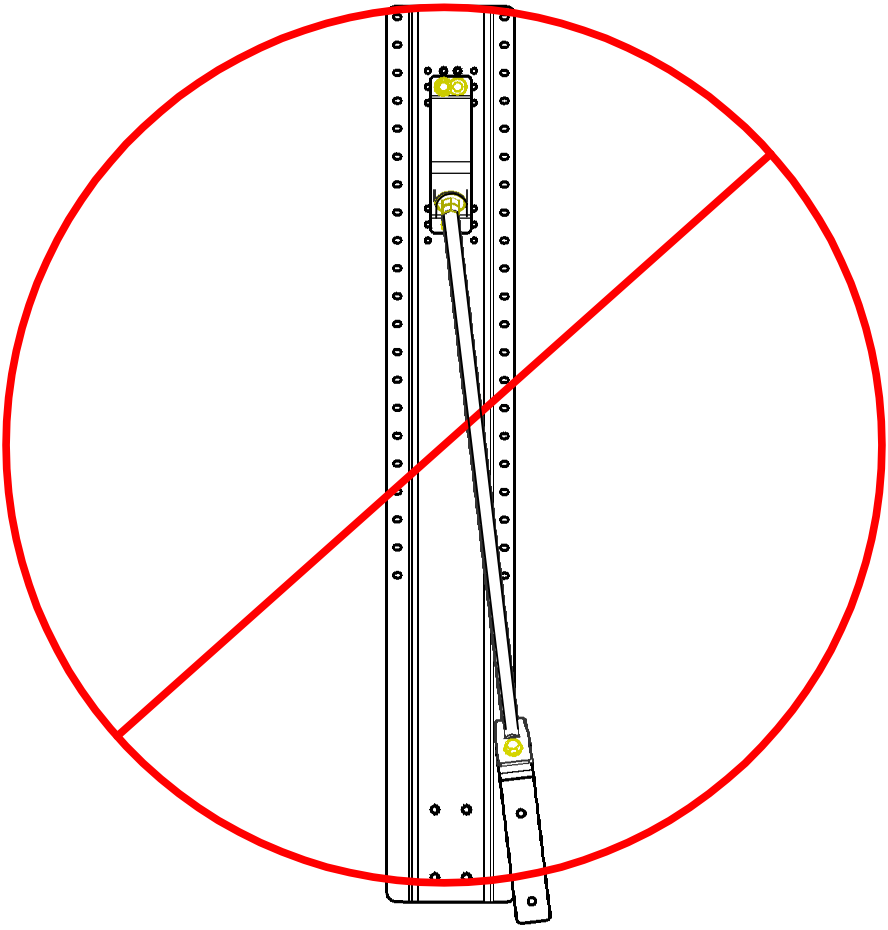
ITEM	QTY	COMPONENT DESCRIPTION	ITEM	QTY	HARDWARE DESCRIPTION	Scale	Size	Sheet
3	1	LOWER CROSS BAR BRACKET	E	7	1/2 - 13 X1-3/4 BOLT,NUT,WASHER,ASSY	NOT TO SCALE	A	3 of 4

# CORRECT



CROSS BAR (2) MUST BE PARALLEL TO  
56" STANCHION (4)

# INCORRECT



FAILURE TO INSTALL CROSS BAR (2) PARALLEL  
TO 56" STANCHION (4) CAN COMPROMISE  
BRACKET INTEGRITY AND RESULT IN BRACKET  
FAILURE AND OR DAMAGE TO FILTER

ITEM	QTY	COMPONENT DESCRIPTION
2	1	CROSS BAR
4	1	56" STANCHION

**DIESEL EMISSIONS SERVICE**  
PORTLAND REDDING OAKLAND ONTARIO  
888-792-2922

Drawing No.

**DES VM6004**

Scale NOT TO SCALE

Size A

Sheet  
4 of 4