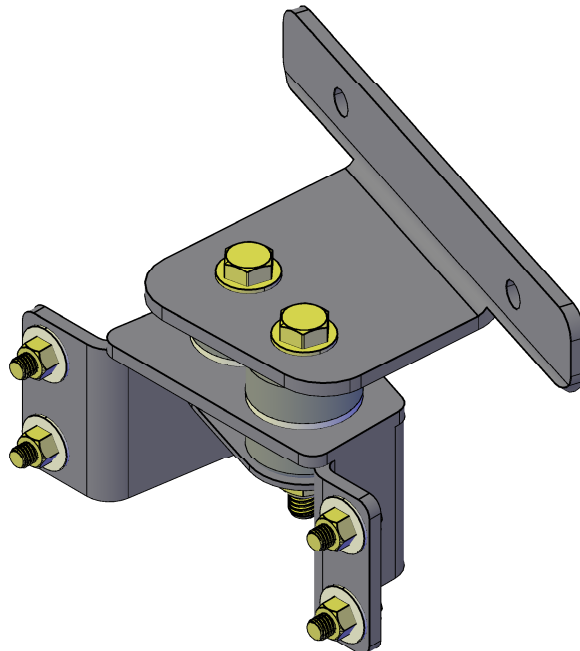
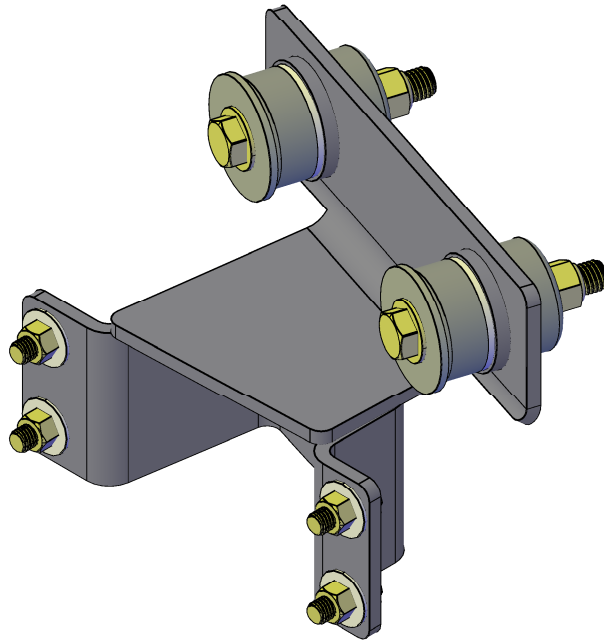


DIESEL EMISSIONS SERVICE

RETROFIT AND REPOWER SPECIALISTS

Portland | Redding | Oakland | Ontario



DES VM6003

ALL INSTALLATION INSTRUCTIONS AND GUIDELINES MUST BE THOROUGHLY READ AND UNDERSTOOD BEFORE INSTALLING A DIESEL EMISSIONS SERVICE PRODUCT



PRODUCT GUIDELINES

Diesel Emissions Service recommends its products be installed by a trained technician with proper tools and safety equipment. In addition all Diesel Emissions Service mounting brackets should be installed using good judgment and sound mechanical principles. Since all installations are unique, it is the sole responsibility of the installer to determine the best fit and function of the DPF mounting brackets.

PRODUCT SAFETY

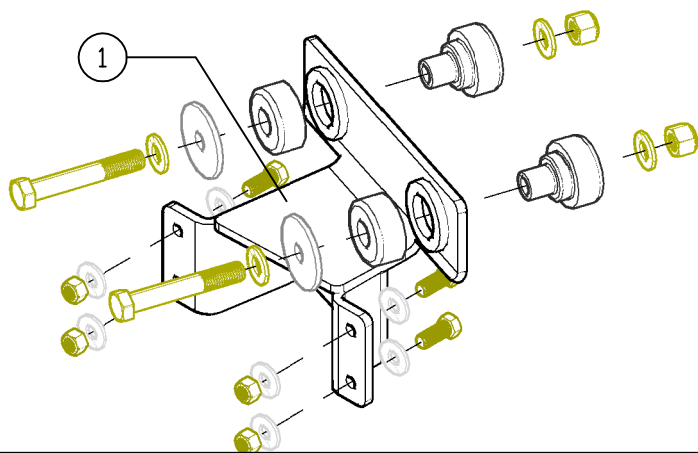
Diesel Emissions Service products are designed for “ON-ROAD” applications only. Modifications to any Diesel Emissions Service product are not recommended and can compromise the bracket performance. Diesel Emissions Service claims no liability or responsibility for the improper application or installation of its products.

PRODUCT WARRANTY

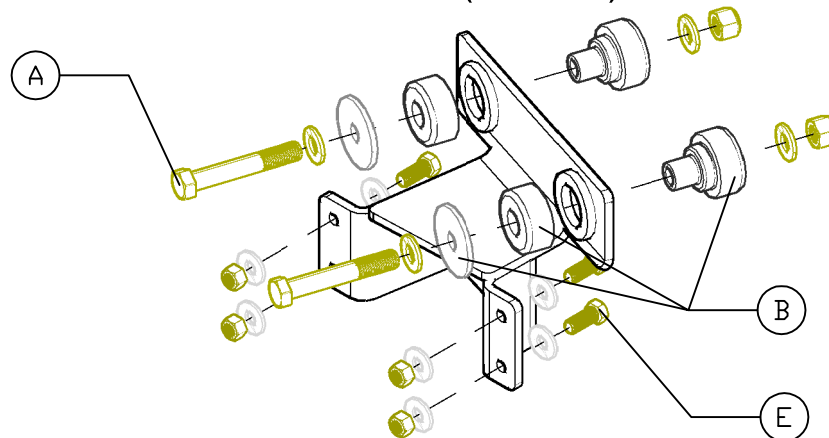
Diesel Emissions Service warrants to the original purchaser of its products that such products will be free from defects in material and workmanship under normal use. Diesel Emissions Service’s obligation under this warranty is solely and exclusively limited to repair and or replacement, at Diesel Emissions Service option, of the product (or components thereof) which Diesel Emissions Service’s examination proves to its satisfaction to be defective. Diesel Emissions Service SHALL HAVE NO OBLIGATION FOR CONSEQUENTIAL DAMAGES TO PERSONAL OR REAL PROPERTY, OR FOR INJURY TO ANY PERSON.

This warranty does not apply to products which have been subject to improper use, accident, negligence, abuse or misuse.

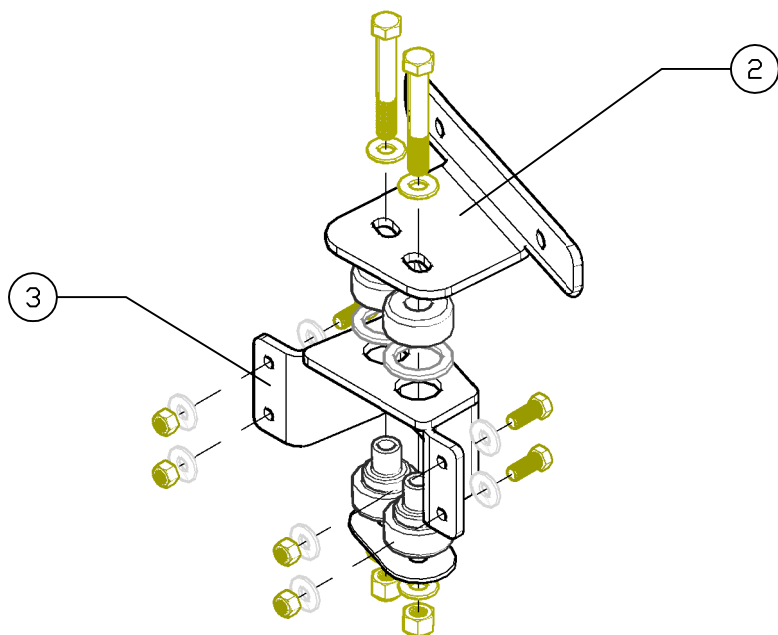
TOP ASSEMBLY (SHEAR) ISOLATION



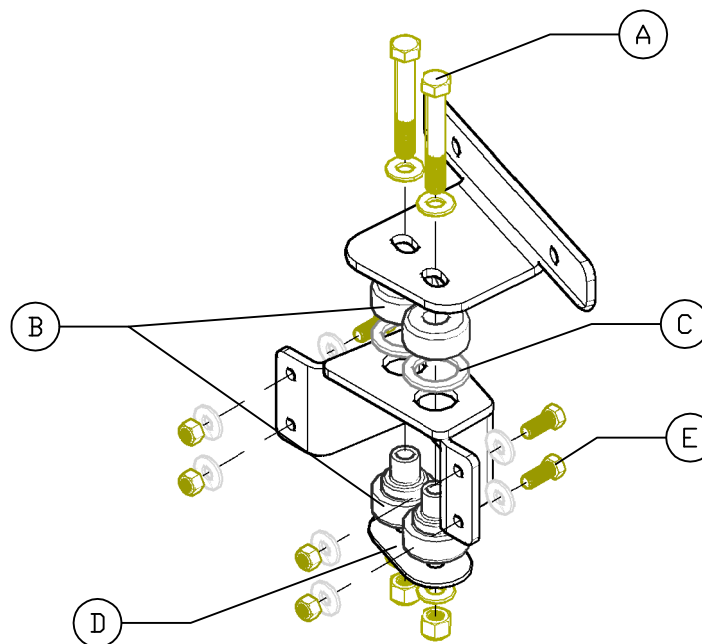
TOP ASSEMBLY (SHEAR) ISOLATION



BOTTOM ASSEMBLY (COMPRESSION) ISOLATION



BOTTOM ASSEMBLY (COMPRESSION) ISOLATION

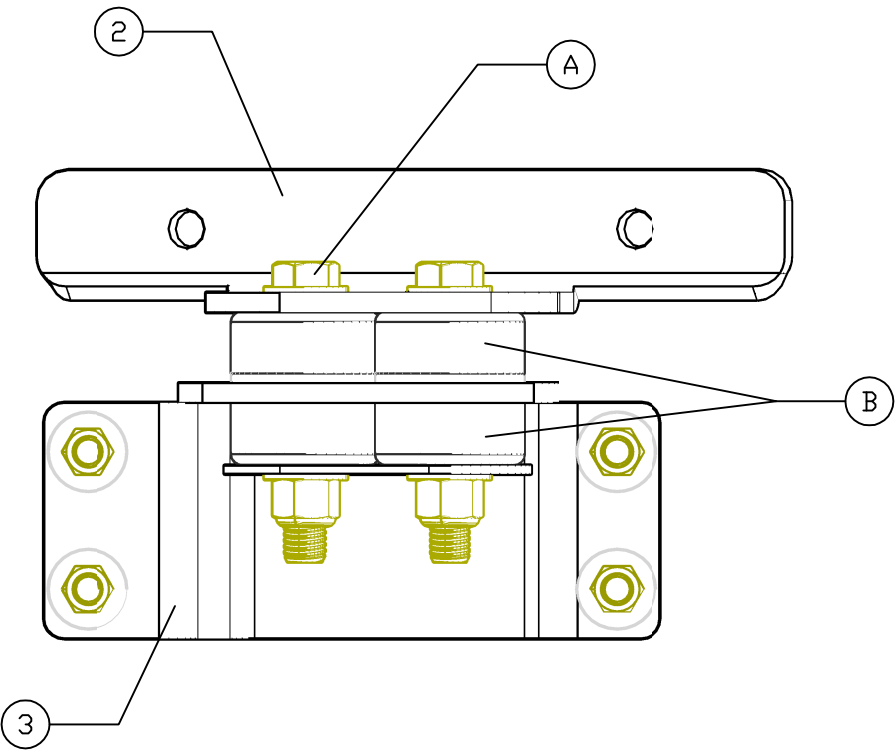


ITEM	QTY	COMPONENT DESCRIPTION	ITEM	QTY	HARDWARE DESCRIPTION
1	1	UPPER BRACKET ASSEMBLY	A	4	1/2 -13 X 3-1/2 BOLT,NUT,WASHER,ASSY
2	1	LOWER BAND MOUNT	B	4	RUBBER ISOLATOR ASSEMBLY
3	1	LOWER BRACKET ASSEMBLY	C	2	1/8 SPACER WASHER
			D	1	STAINLESS LOWER ISOLATOR WASHER
			E	8	3/8 -16 X 1-1/2 BOLT,NUT,WASHER,ASSY

DIESEL EMISSIONS SERVICE
 PORTLAND REDDING OAKLAND ONTARIO
 888-792-2922

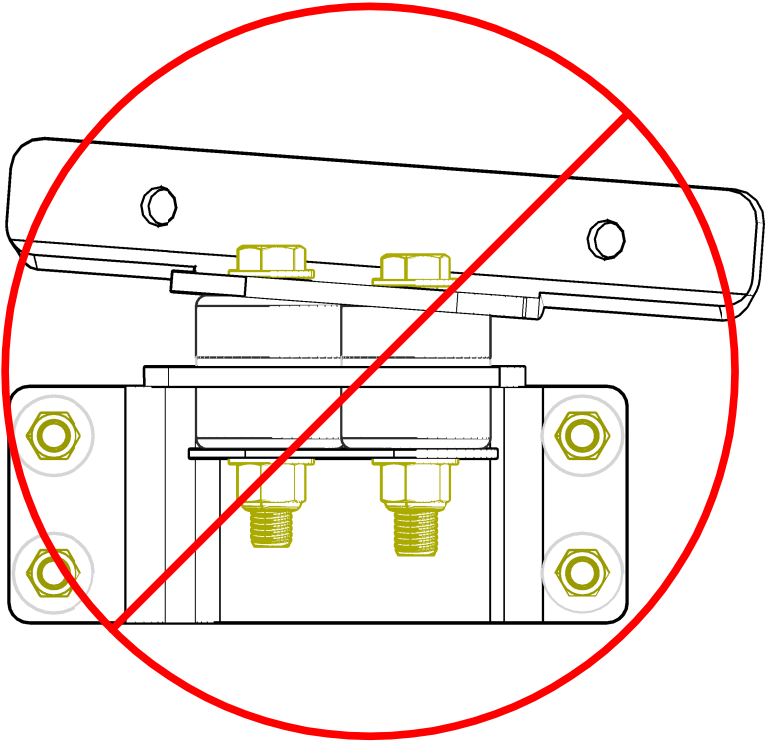
Size	Drawing No.	
A	DES VM6003	
Scale	CAD File	Sheet
NOT TO SCALE		1 OF 3


CORRECT



ISOLATORS (B) MUST BE COMPRESSED
EQUALLY BETWEEN LOWER BAND MOUNT (2)
AND LOWER BRACKET ASSEMBLY (3)

INCORRECT

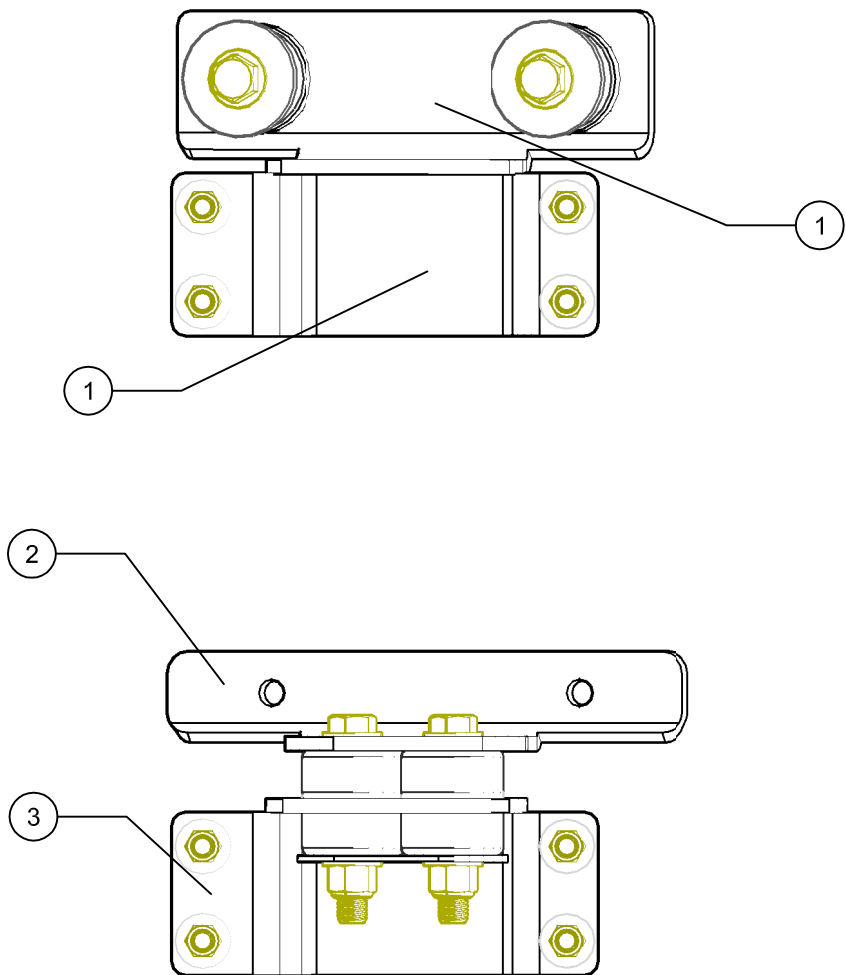


 IMPROPER ISOLATOR COMPRESSION
BETWEEN LOWER BAND MOUNT (2) AND
LOWER BRACKET ASSEMBLY (3) CAN
RESULT IN BRACKET FAILURE AND OR
DAMAGE TO FILTER

ITEM		QTY	COMPONENT DESCRIPTION	ITEM		QTY	HARDWARE DESCRIPTION	Size		Drawing No.	
2		1	LOWER BAND MOUNT	A		4	1/2 -13 X3-1/2 BOLT,NUT,WASHER,ASSY	A		DES VM6003	
3		1	LOWER BRACKET ASSEMBLY	B		4	RUBBER ISOLATOR ASSEMBLY	Scale NOT TO SCALE		Sheet 2 of 3	

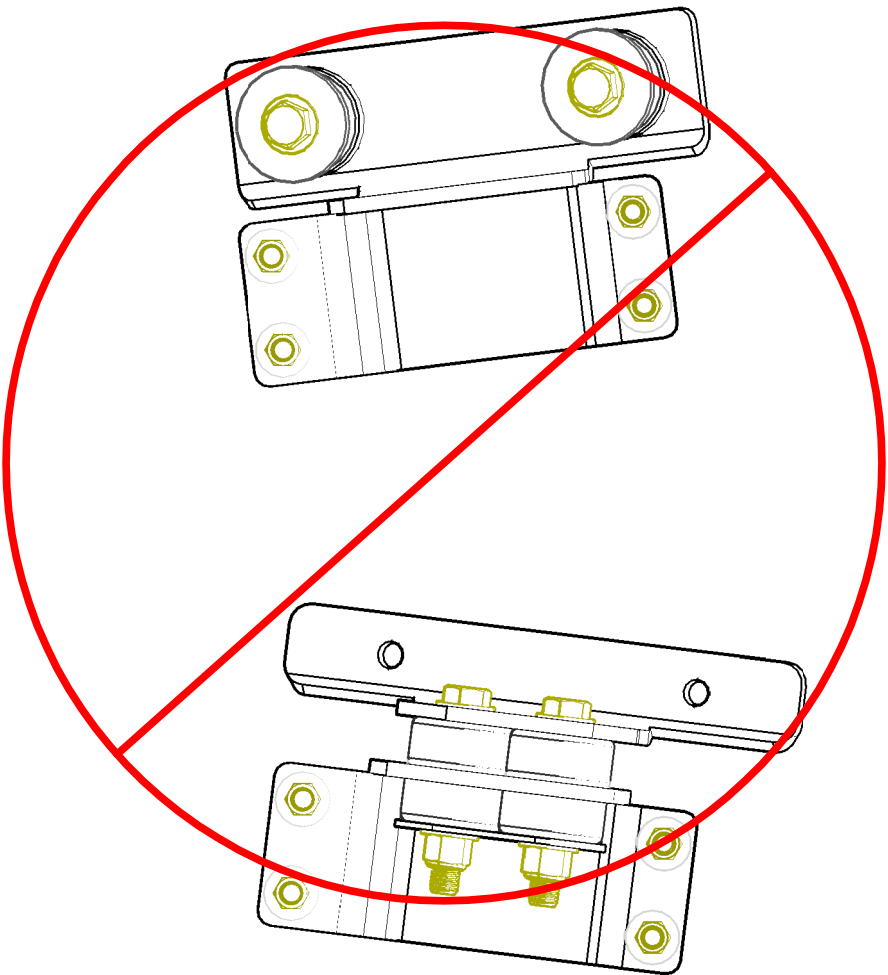
DIESEL EMISSIONS SERVICE
PORTLAND REDDING OAKLAND ONTARIO
888-792-2922

CORRECT



UPPER BRACKET ASSEMBLY (1) MUST BE
PARALLEL TO LOWER BAND MOUNT (2) AND
LOWER BRACKET ASSEMBLY (3)

INCORRECT



IMPROPER ALIGNMENT OF UPPER BRACKET
ASSEMBLY (1) TO LOWER BAND MOUNT (2)
AND LOWER BRACKET ASSEMBLY (3) CAN
RESULT IN BRACKET FAILURE AND OR
DAMAGE TO FILTER

ITEM	QTY	COMPONENT DESCRIPTION
1	1	UPPER BRACKET ASSEMBLY
2	1	LOWER BAND MOUNT
3	1	LOWER BRACKET ASSEMBLY

DIESEL EMISSIONS SERVICE
PORTLAND REDDING OAKLAND ONTARIO
888-792-2922

Drawing No.

DES VM6003

Scale NOT TO SCALE

Size A

Sheet
3 of 3