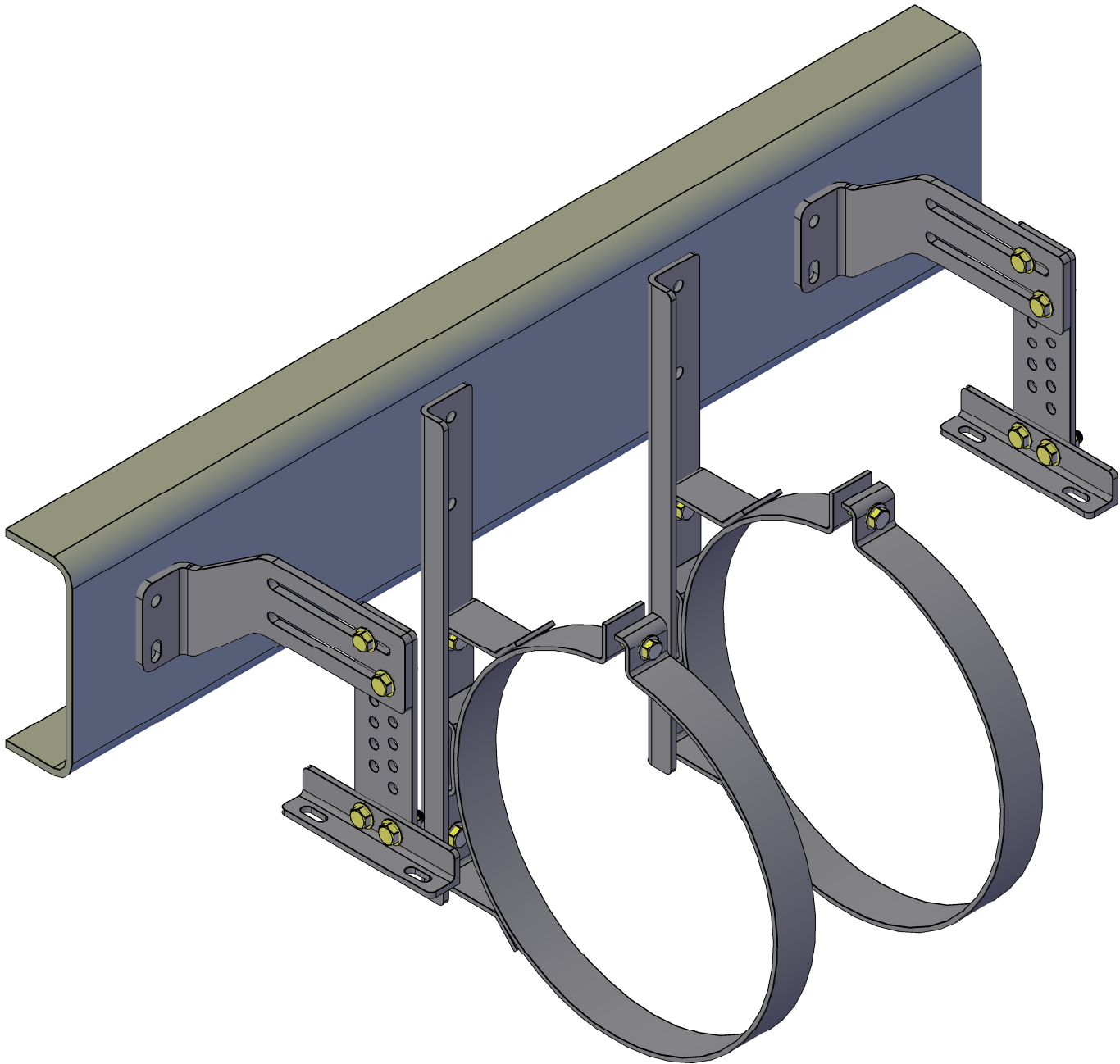


DIESEL EMISSIONS SERVICE

RETROFIT AND REPOWER SPECIALISTS

Portland | Redding | Oakland | Ontario



DES M5043 OUTSIDE FRAME MOUNTING KIT FOR SC43

ALL INSTALLATION INSTRUCTIONS AND GUIDELINES MUST BE THOROUGHLY READ AND UNDERSTOOD BEFORE INSTALLING A DIESEL EMISSIONS SERVICE PRODUCT



PRODUCT GUIDELINES

Diesel Emissions Service recommends its products be installed by a trained technician with proper tools and safety equipment. In addition all Diesel Emissions Service mounting brackets should be installed using good judgment and sound mechanical principles. Since all installations are unique, it is the sole responsibility of the installer to determine the best fit and function of the DPF mounting brackets.

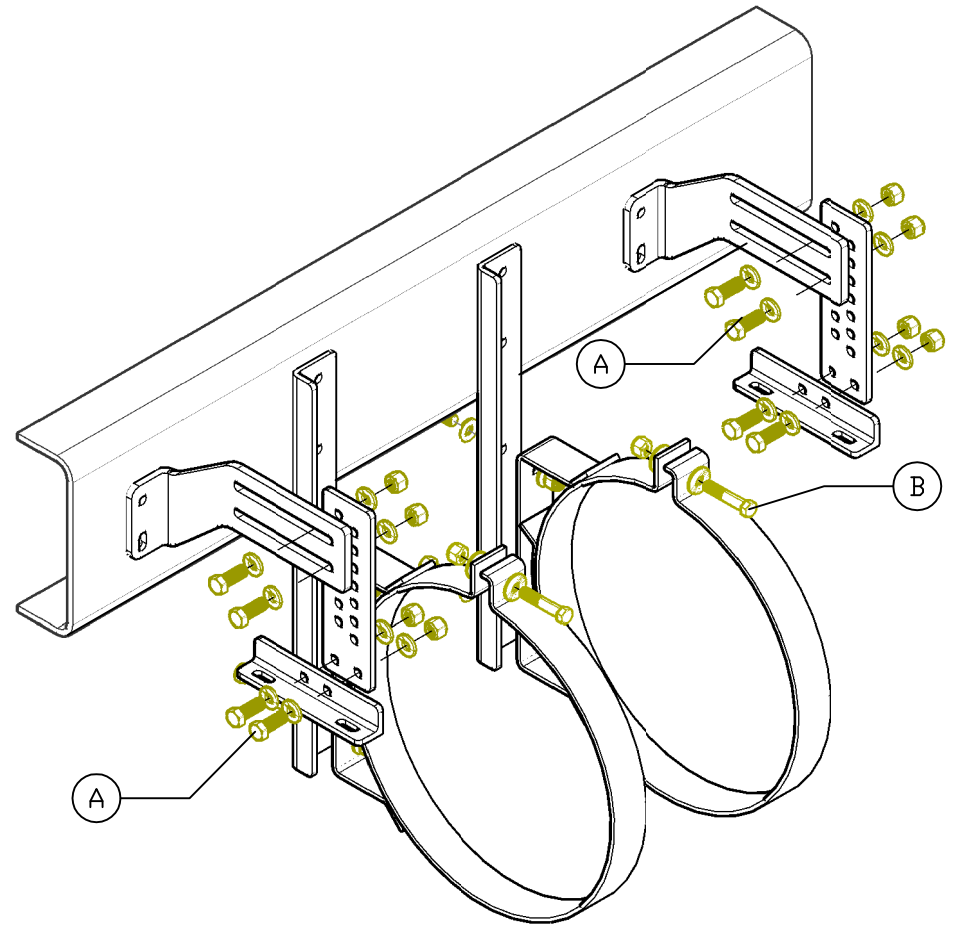
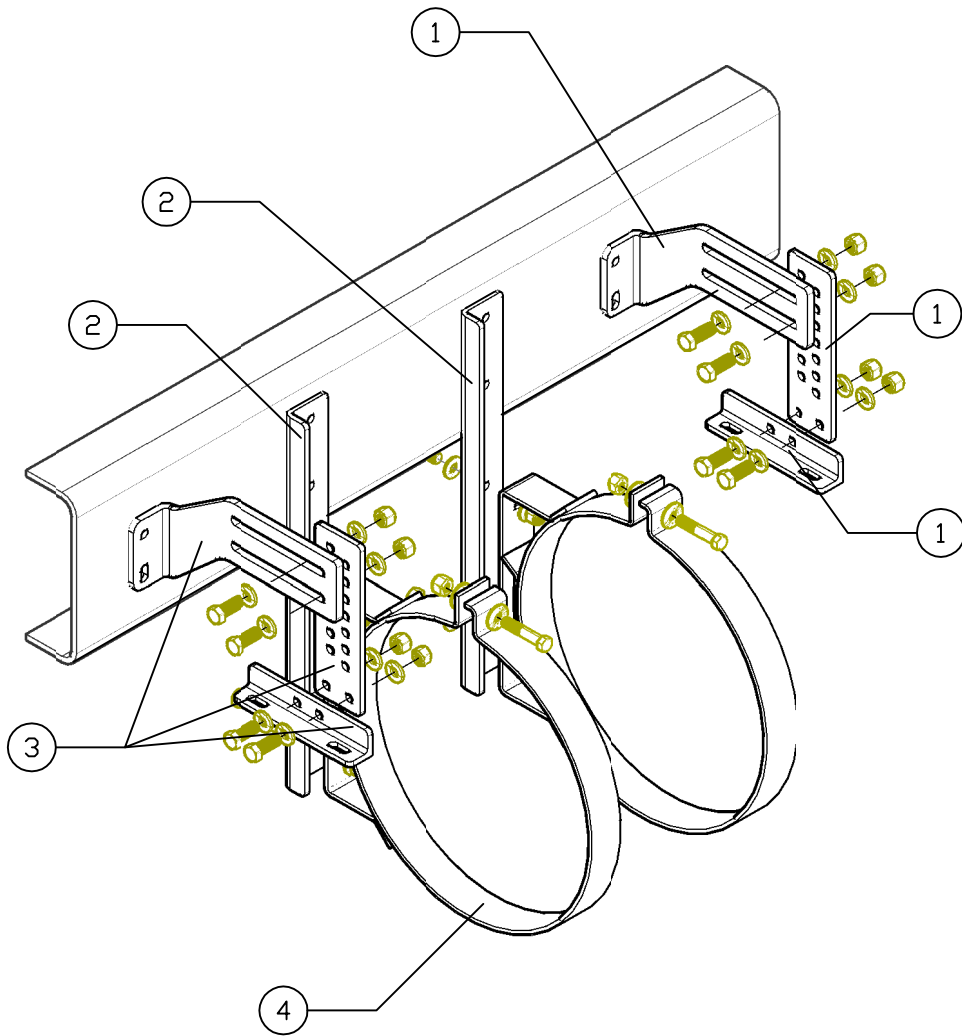
PRODUCT SAFETY

Diesel Emissions Service products are designed for “ON-ROAD” applications only. Modifications to any Diesel Emissions Service product are not recommended and can compromise the bracket performance. Diesel Emissions Service claims no liability or responsibility for the improper application or installation of its products.

PRODUCT WARRANTY

Diesel Emissions Service warrants to the original purchaser of its products that such products will be free from defects in material and workmanship under normal use. Diesel Emissions Service’s obligation under this warranty is solely and exclusively limited to repair and or replacement, at Diesel Emissions Service option, of the product (or components thereof) which Diesel Emissions Service’s examination proves to its satisfaction to be defective. Diesel Emissions Service SHALL HAVE NO OBLIGATION FOR CONSEQUENTIAL DAMAGES TO PERSONAL OR REAL PROPERTY, OR FOR INJURY TO ANY PERSON.

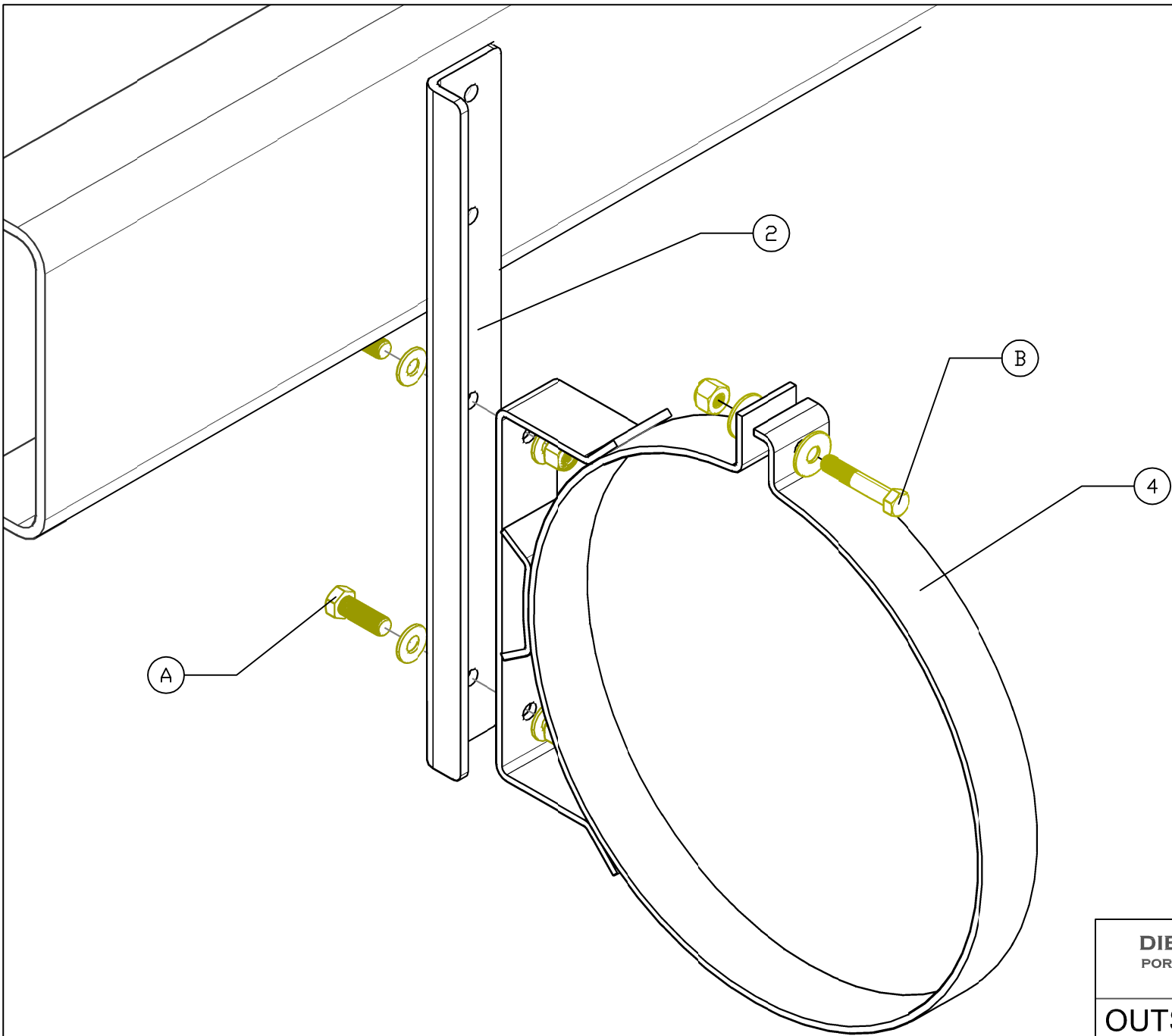
This warranty does not apply to products which have been subject to improper use, accident, negligence, abuse or misuse.



ITEM	QTY	COMPONENT DESCRIPTION
1	1	INLET MOUNTING BRACKET ASSY
2	2	OUTSIDE FRAME BRACKET
3	1	OUTLET MOUNTING BRACKET ASSY
4	2	SC43 MOUNTING BAND

ITEM	QTY	HARDWARE DESCRIPTION
A	12	7/16-14 X1-1/2 BOLT,NUT,WASHER,ASSY
B	2	7/16-14 X 3 BOLT,NUT,WASHER,ASSY

DIESEL EMISSIONS SERVICE PORTLAND REDDING OAKLAND ONTARIO 888-792-2922		
OUTSIDE FRAME MOUNTING KIT FOR SC43		
Size	Drawing No.	Rev
A	DES M5043	
Scale	CAD File	Sheet
NOT TO SCALE		1 OF 7



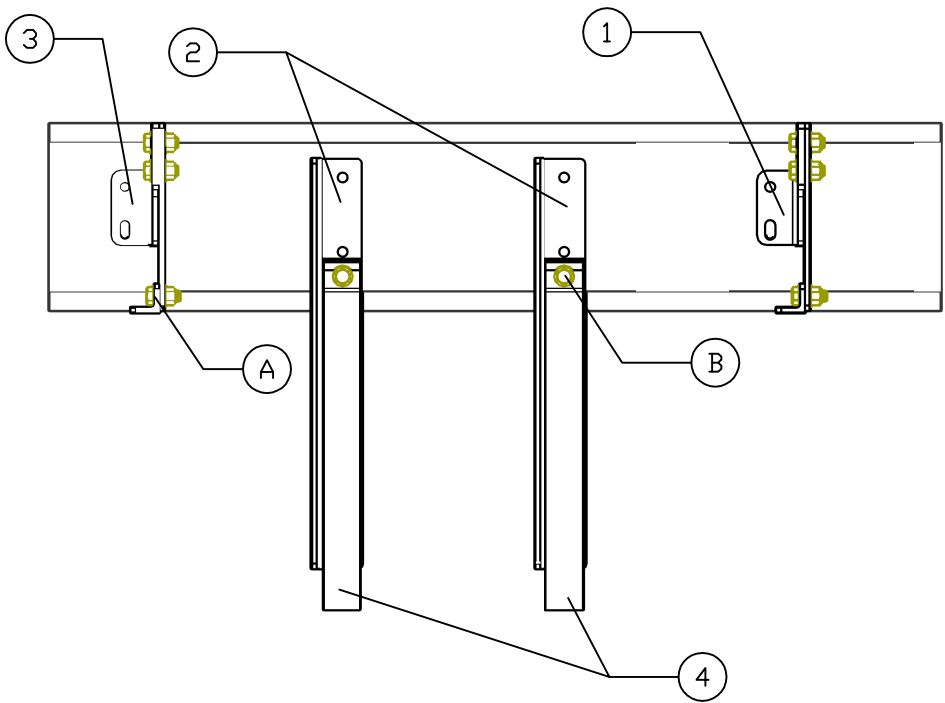
DIESEL EMISSIONS SERVICE
 PORTLAND REDDING OAKLAND ONTARIO
 888-792-2922

OUTSIDE FRAME MOUNTING KIT FOR SC43

ITEM	QTY	COMPONENT DESCRIPTION	ITEM	QTY	HARDWARE DESCRIPTION
2	2	OUTSIDE FRAME BRACKET	A	12	7/16-14 X1-1/2 BOLT,NUT,WASHER,ASSY
4	2	SC43 MOUNTING BAND	B	2	7/16-14 X 3 BOLT,NUT,WASHER,ASSY

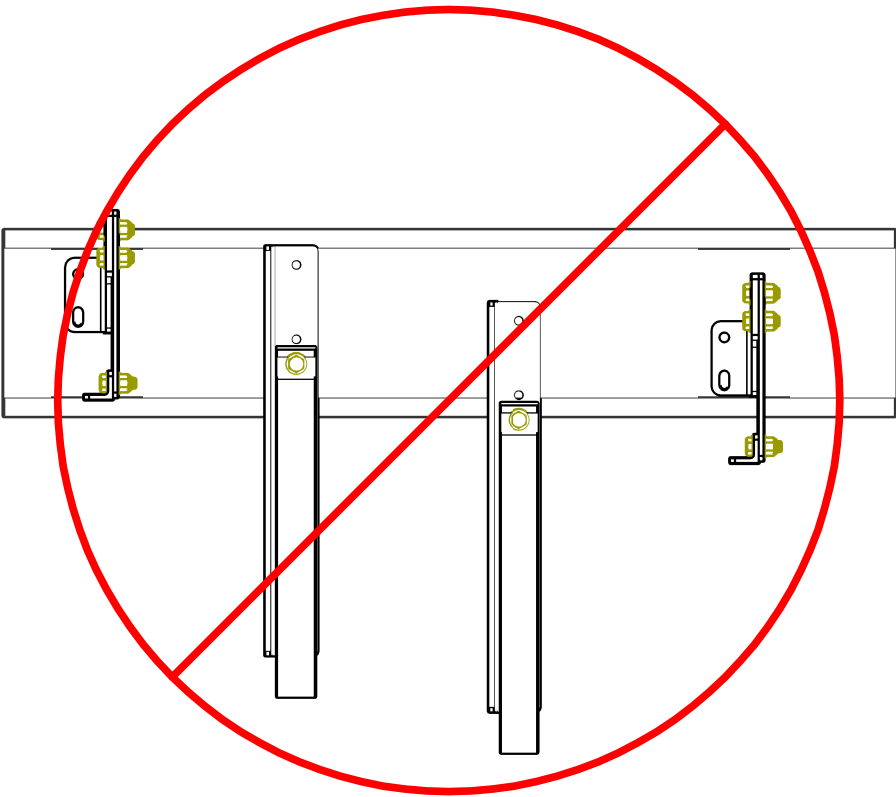
Size	Drawing No.		Rev
A	DES M5043		
Scale	CAD File	Sheet	
NOT TO SCALE		3 of 7	


CORRECT



ALL BRACKET COMPONENTS OF DES M5043
MUST BE PARALLEL WITH ONE ANOTHER AND
PERPENDICULAR TO FRAME RAIL

INCORRECT



 FAILURE TO PROPERLY INSTALL DES M5043
BRACKETS CAN RESULT IN BRACKET
FAILURE AND OR DAMAGE TO FILTER

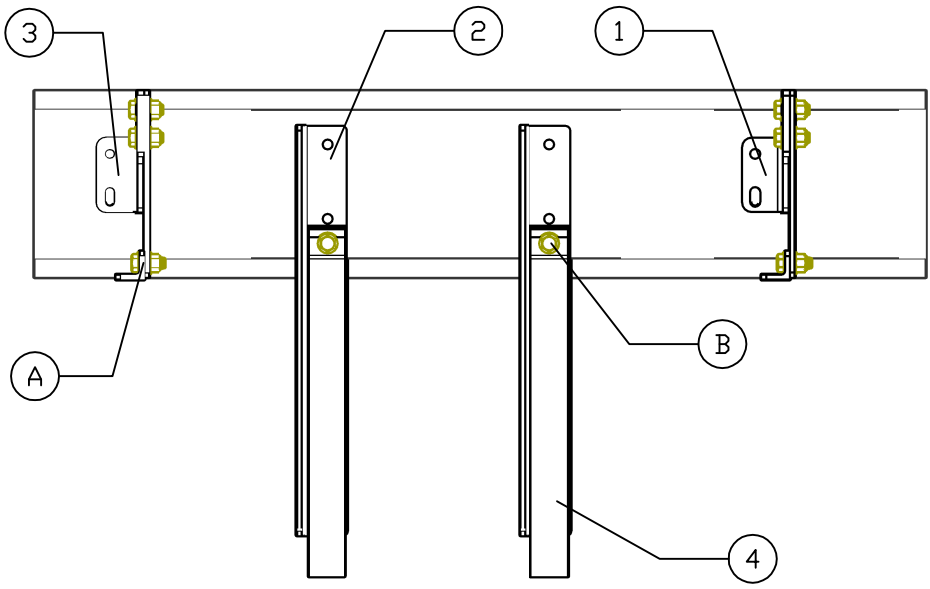
ITEM	QTY	COMPONENT DESCRIPTION
1	1	INLET MOUNTING BRACKET ASSY
2	2	OUTSIDE FRAME BRACKET
3	1	OUTLET MOUNTING BRACKET ASSY
4	2	SC43 MOUNTING BAND

ITEM	QTY	HARDWARE DESCRIPTION
A	12	7/16-14 X1-1/2 BOLT,NUT,WASHER,ASSY
B	2	7/16-14 X 3 BOLT,NUT,WASHER,ASSY

DIESEL EMISSIONS SERVICE
PORTLAND REDDING OAKLAND ONTARIO
888-792-2922

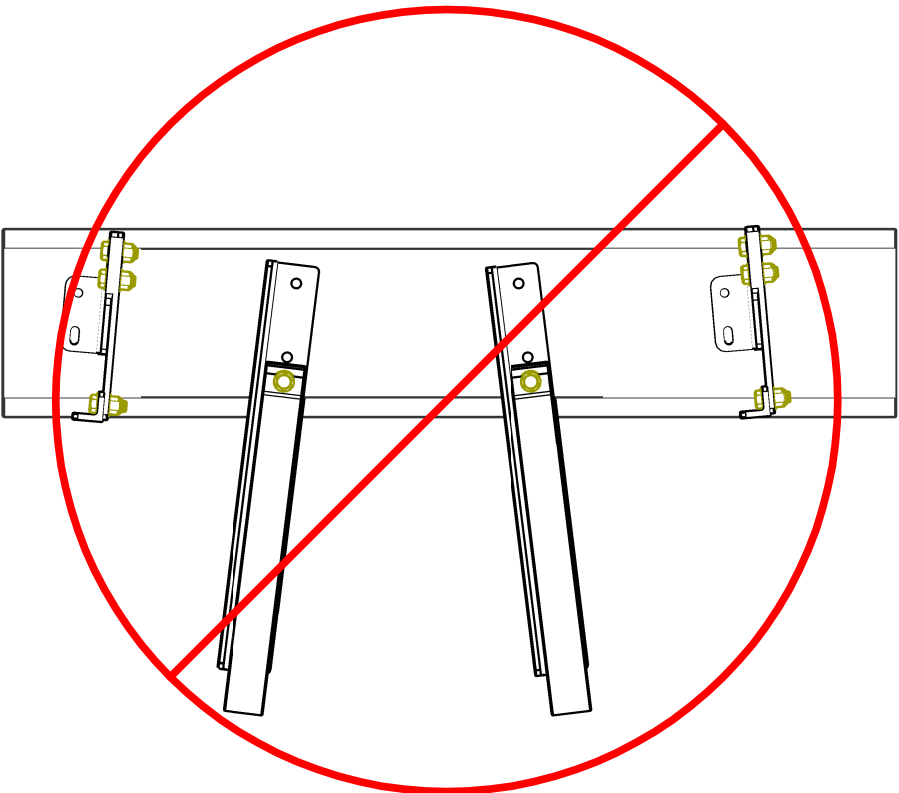
Size	A	Drawing No.	DES M5043
Scale	NOT TO SCALE	Sheet	4 of 7


CORRECT



ALL BRACKET COMPONENTS OF DES M5043
MUST BE PARALLEL WITH ONE ANOTHER AND
PERPENDICULAR TO FRAME RAIL

INCORRECT



 FAILURE TO PROPERLY INSTALL DES M5043
BRACKETS CAN RESULT IN BRACKET
FAILURE AND OR DAMAGE TO FILTER

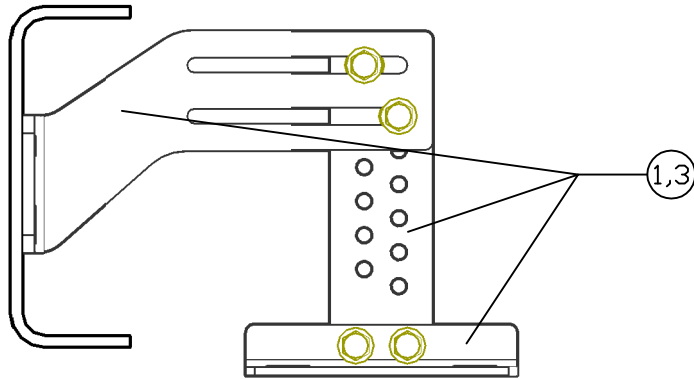
ITEM	QTY	COMPONENT DESCRIPTION
1	1	INLET MOUNTING BRACKET ASSY
2	2	OUTSIDE FRAME BRACKET
3	1	OUTLET MOUNTING BRACKET ASSY
4	2	SC43 MOUNTING BAND

ITEM	QTY	HARDWARE DESCRIPTION
A	12	7/16-14 X1-1/2 BOLT,NUT,WASHER,ASSY
B	2	7/16-14 X 3 BOLT,NUT,WASHER,ASSY

DIESEL EMISSIONS SERVICE
PORTLAND REDDING OAKLAND ONTARIO
888-792-2922

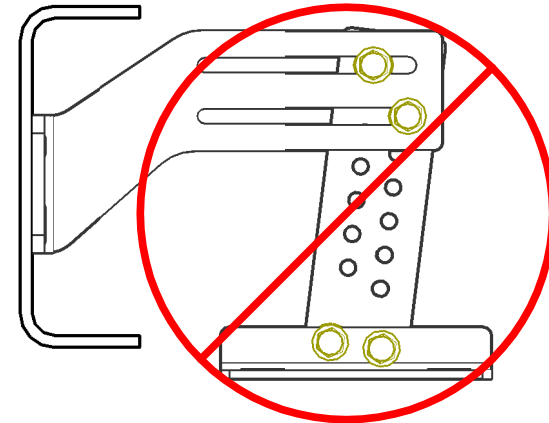
Size	A	Drawing No.	DES M5043
Scale	NOT TO SCALE	Sheet	5 of 7

CORRECT



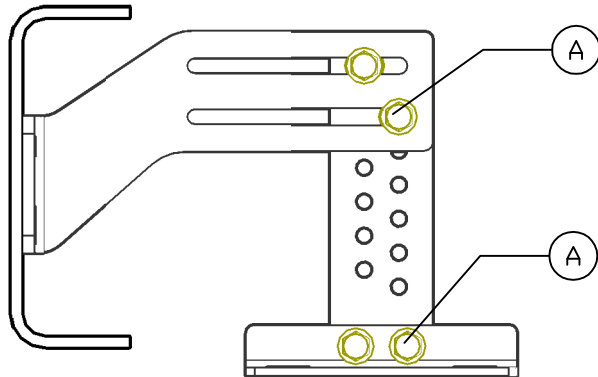
INLET AND OUTLET MOUNTING BRACKET ASSEMBLY(1,3) MUST BE PARALLEL WITH ONE ANOTHER AND PERPENDICULAR WITH FRAME RAIL

INCORRECT



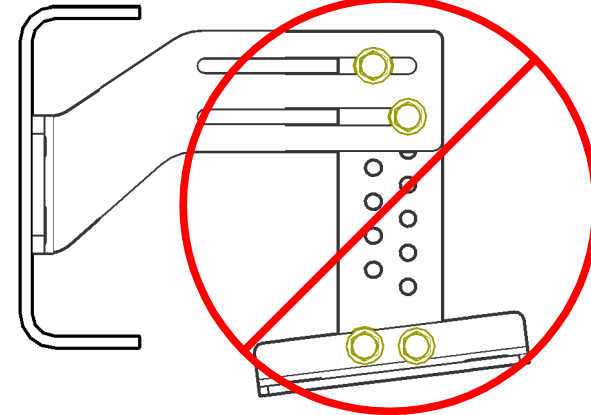
 FAILURE TO PROPERLY INSTALL DES M5043 CAN RESULT IN BRACKET FAILURE AND OR DAMAGE TO FILTER

CORRECT



INLET AND OUTLET MOUNTING BRACKET ASSEMBLY(1,3) MUST BE PARALLEL WITH ONE ANOTHER AND PERPENDICULAR WITH FRAME RAIL

INCORRECT



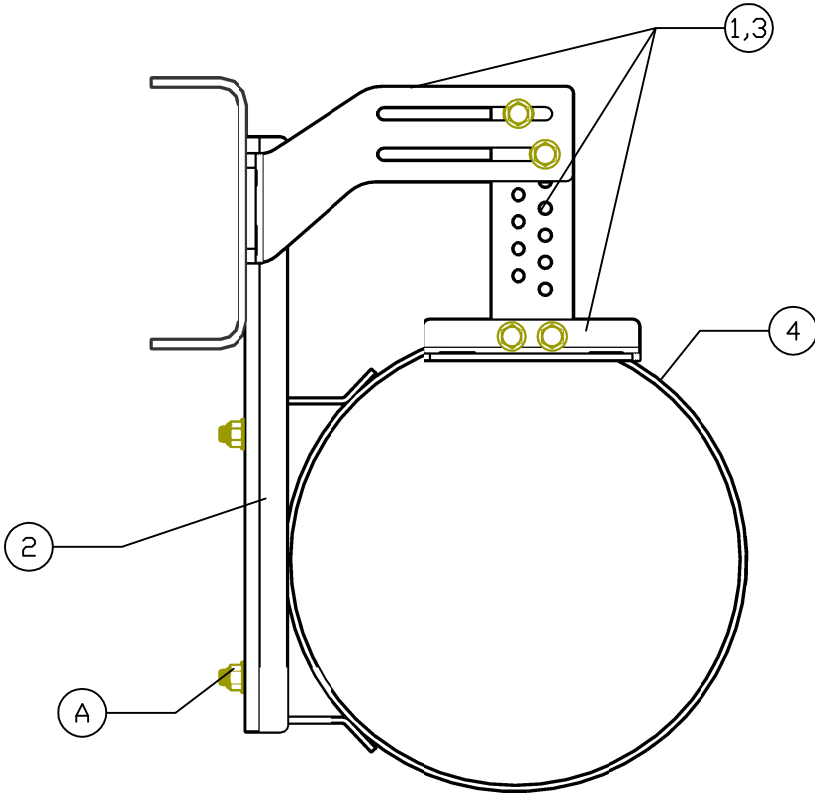
 FAILURE TO PROPERLY INSTALL DES M5043 CAN RESULT IN BRACKET FAILURE AND OR DAMAGE TO FILTER

DIESEL EMISSIONS SERVICE
PORTLAND REDDING OAKLAND ONTARIO
888-792-2922

Size **A** Drawing No. **DES M5043**
Scale NOT TO SCALE Sheet 6 of 7

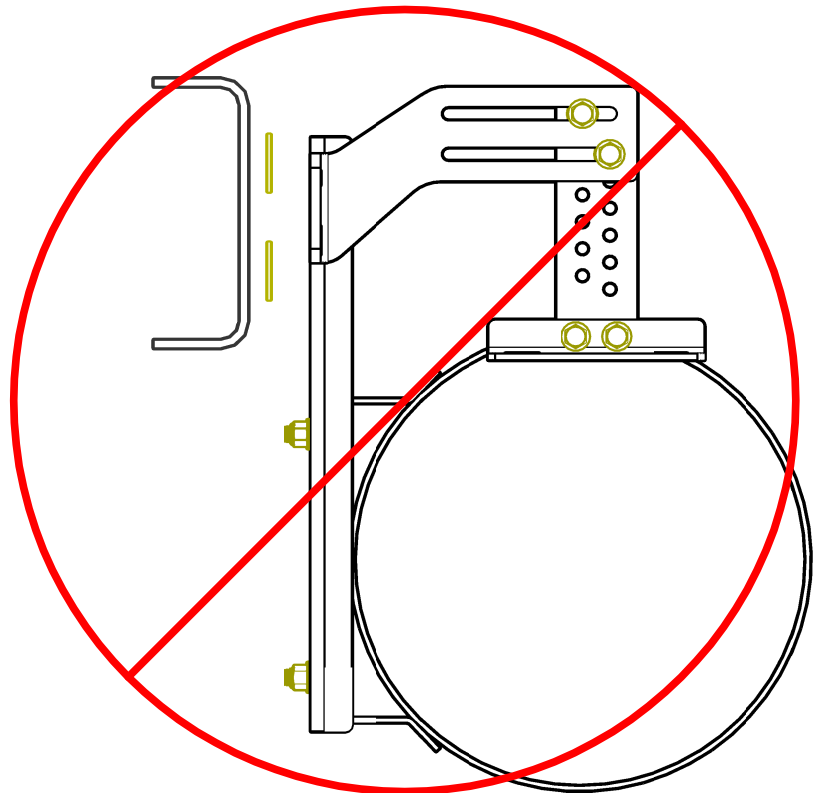
ITEM	QTY	COMPONENT DESCRIPTION	ITEM	QTY	HARDWARE DESCRIPTION
1	1	INLET MOUNTING BRACKET ASSY	A	12	7/16-14 X1-1/2 BOLT,NUT,WASHER,ASSY
3	1	OUTLET MOUNTING BRACKET ASSY			

CORRECT



ALL DES M5043 BRACKETS MUST SEAT FLUSH TO FRAME RAIL

INCORRECT



NEVER SPACE DES M5043 BRACKETS AWAY FROM FRAME RAIL

ITEM	QTY	COMPONENT DESCRIPTION
1	1	INLET MOUNTING BRACKET ASSY
2	2	OUTSIDE FRAME BRACKET
3	1	OUTLET MOUNTING BRACKET ASSY
4	2	SC43 MOUNTING BAND

ITEM	QTY	HARDWARE DESCRIPTION
A	12	7/16-14 X1-1/2 BOLT,NUT,WASHER,ASSY

DIESEL EMISSIONS SERVICE
PORTLAND REDDING OAKLAND ONTARIO
888-792-2922

Size	A	Drawing No.	DES M5043
Scale	NOT TO SCALE	Sheet	7 of 7