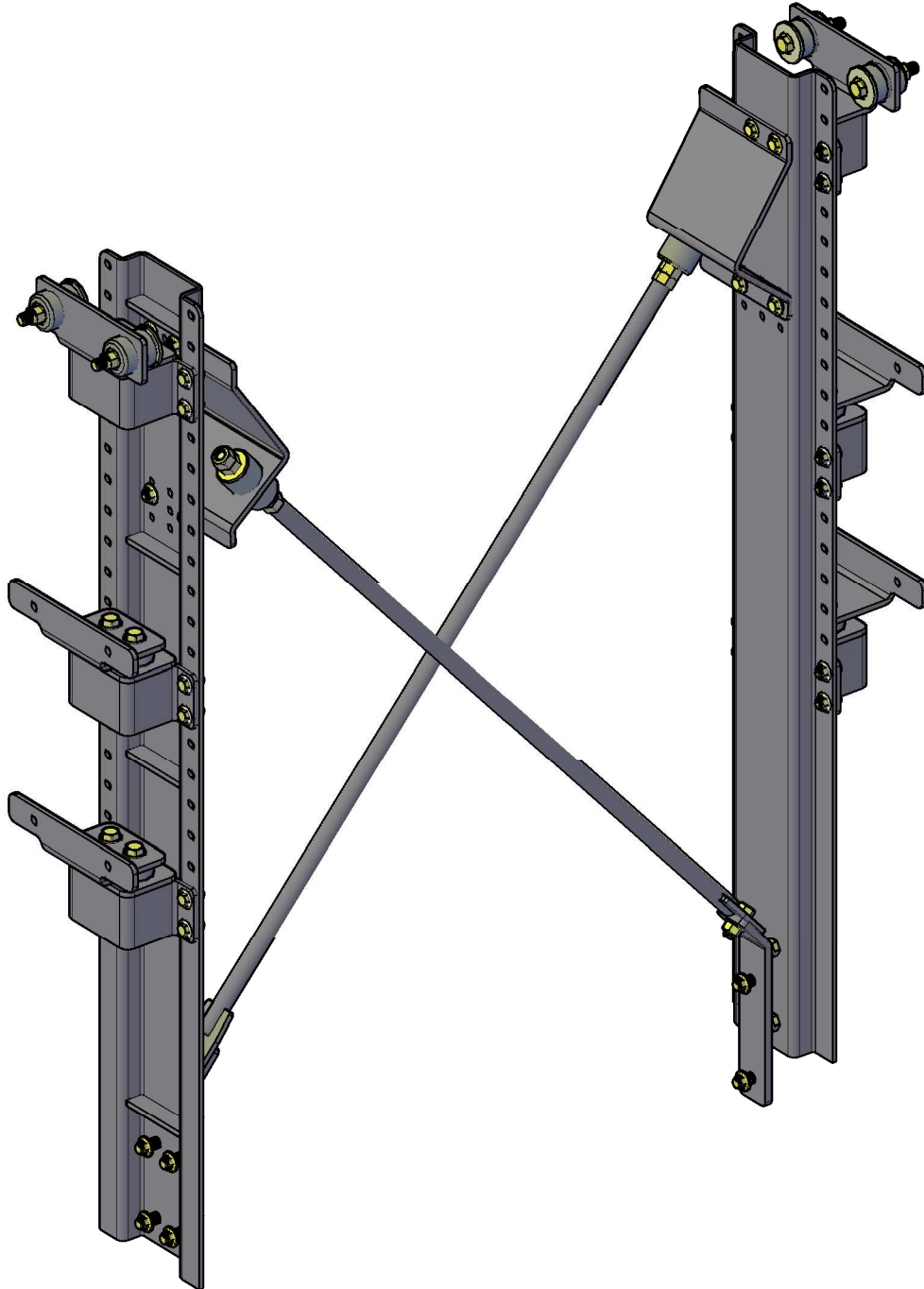


DIESEL EMISSIONS SERVICE

RETROFIT AND REPOWER SPECIALISTS

Portland | Redding | Oakland | Ontario



DES VM6023 FOR PCS13/PCS17/PCS23 DUAL FILTERS

ALL INSTALLATION INSTRUCTIONS AND GUIDELINES MUST BE THOROUGHLY READ AND UNDERSTOOD BEFORE INSTALLING A DIESEL EMISSIONS SERVICE PRODUCT



PRODUCT GUIDELINES

Diesel Emissions Service recommends its products be installed by a trained technician with proper tools and safety equipment. In addition all Diesel Emissions Service mounting brackets should be installed using good judgment and sound mechanical principles. Since all installations are unique, it is the sole responsibility of the installer to determine the best fit and function of the DPF mounting brackets.

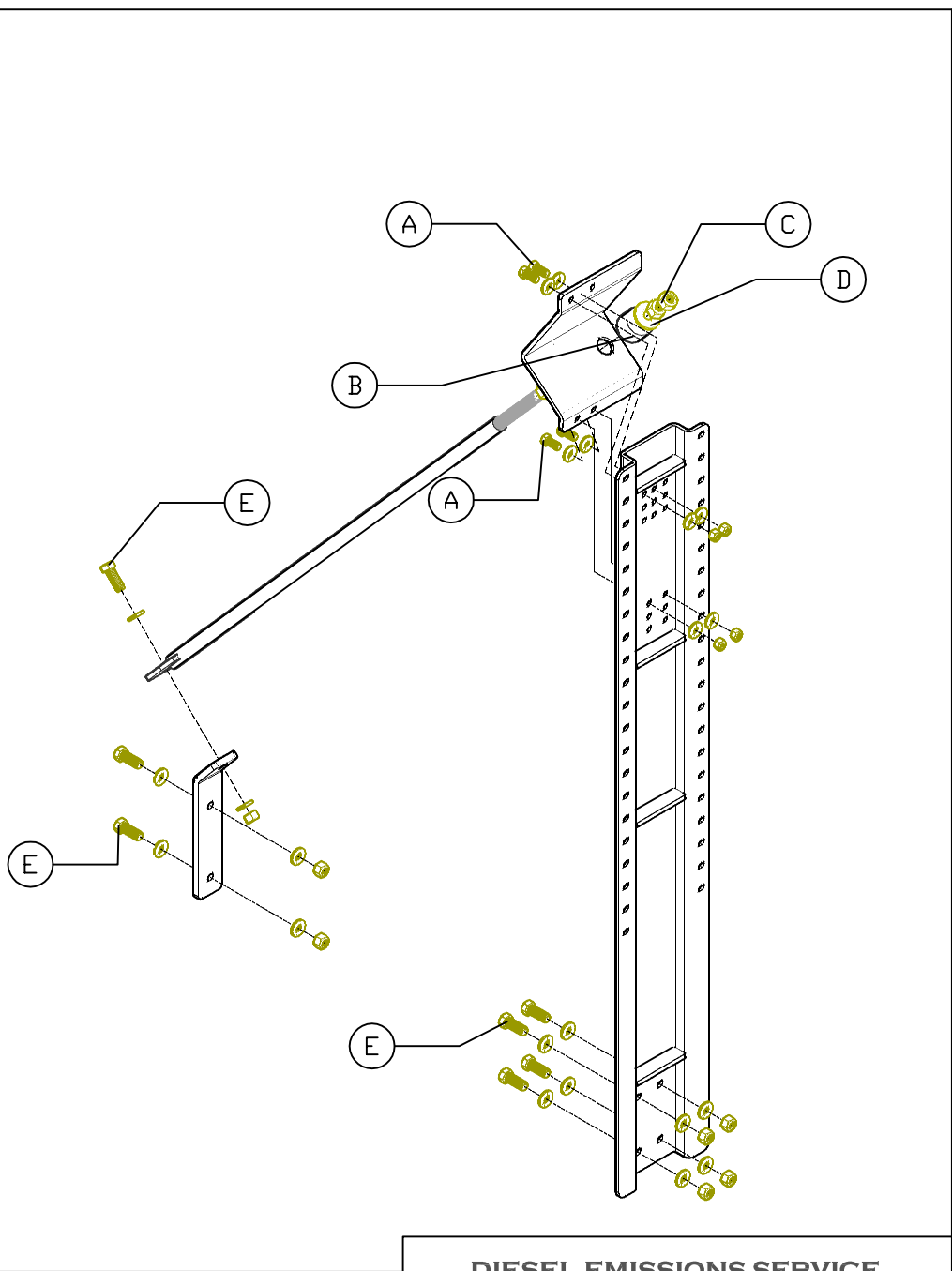
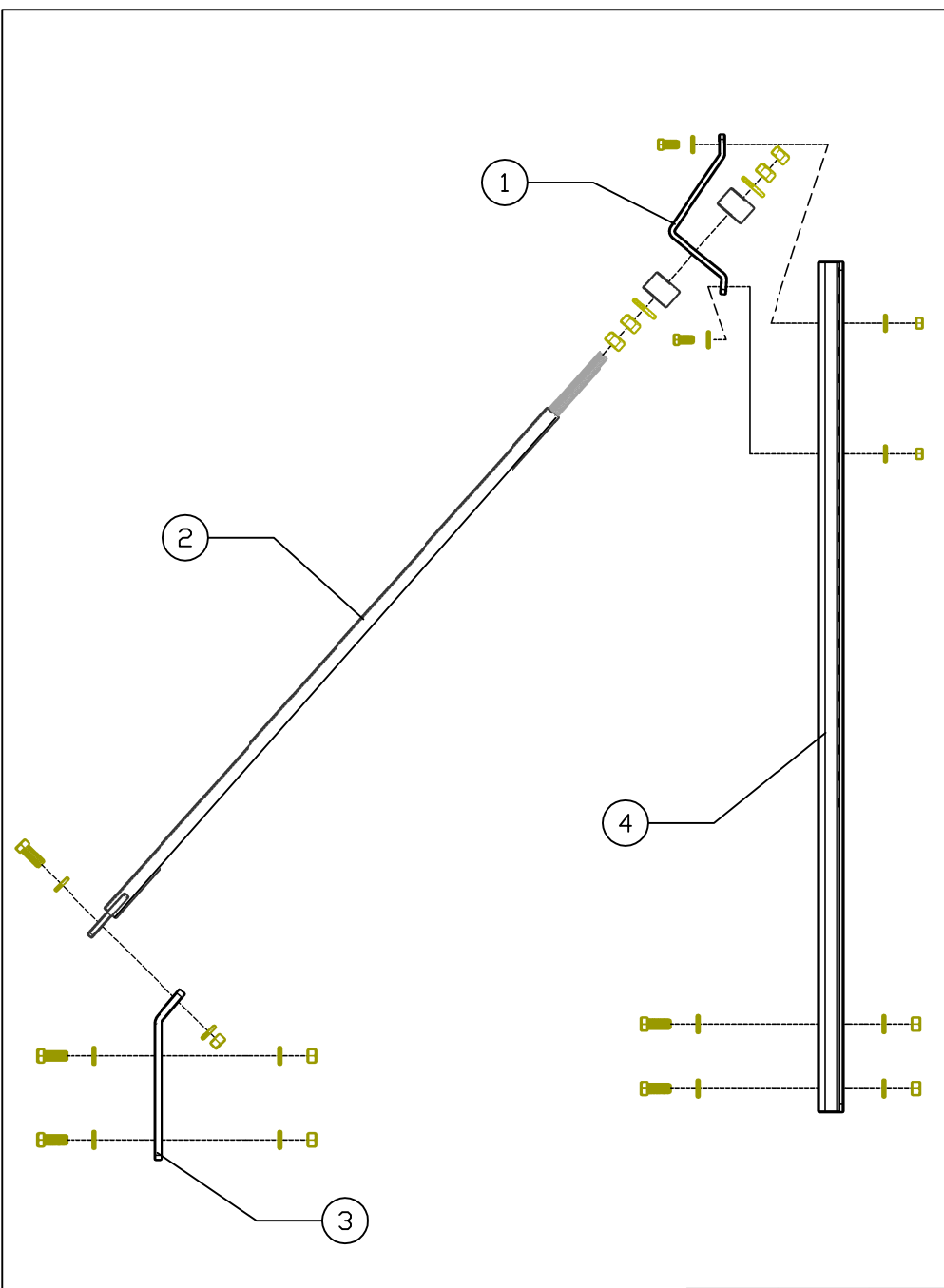
PRODUCT SAFETY

Diesel Emissions Service products are designed for “ON-ROAD” applications only. Modifications to any Diesel Emissions Service product are not recommended and can compromise the bracket performance. Diesel Emissions Service claims no liability or responsibility for the improper application or installation of its products.

PRODUCT WARRANTY

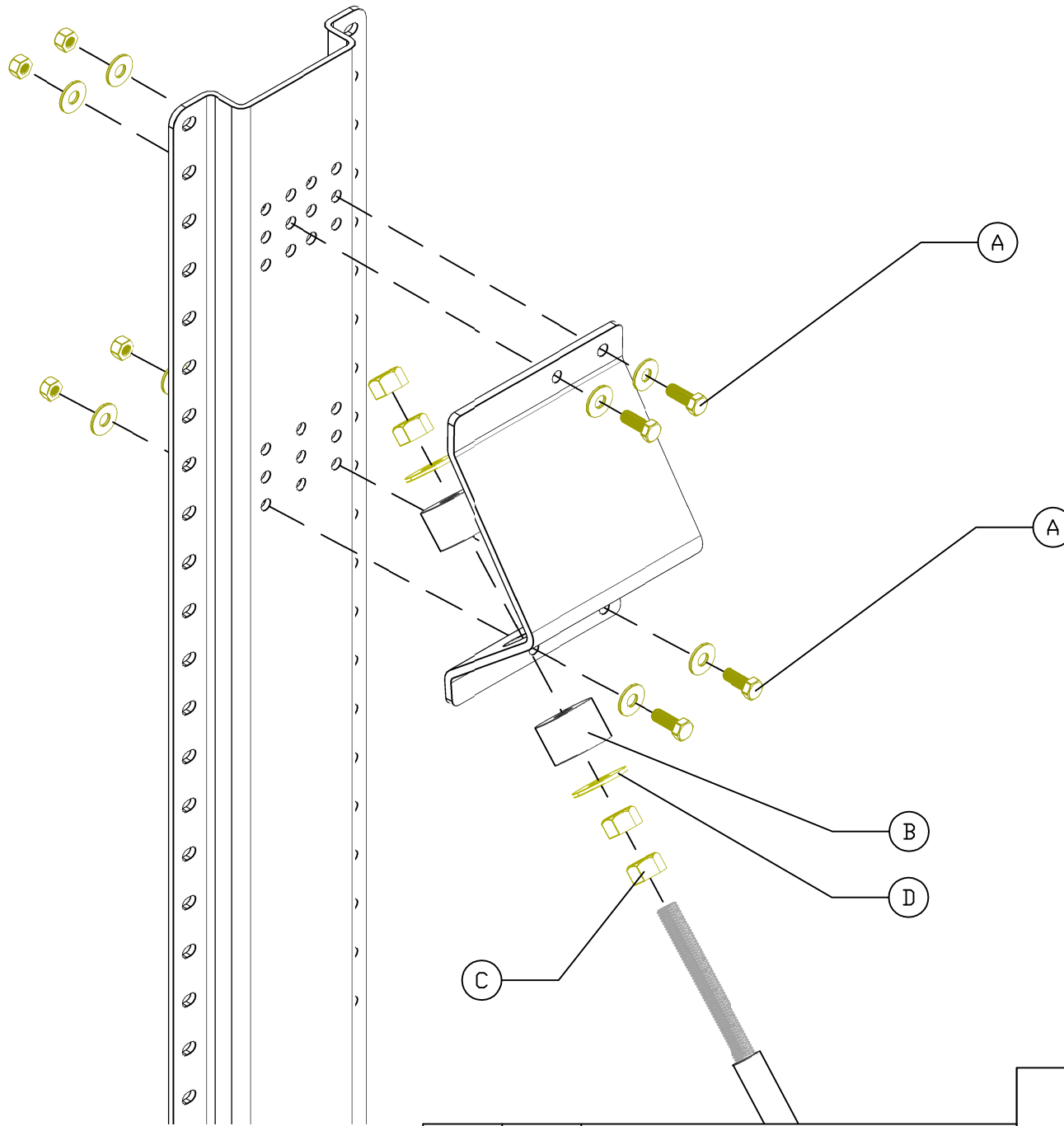
Diesel Emissions Service warrants to the original purchaser of its products that such products will be free from defects in material and workmanship under normal use. Diesel Emissions Service’s obligation under this warranty is solely and exclusively limited to repair and or replacement, at Diesel Emissions Service option, of the product (or components thereof) which Diesel Emissions Service’s examination proves to its satisfaction to be defective. Diesel Emissions Service SHALL HAVE NO OBLIGATION FOR CONSEQUENTIAL DAMAGES TO PERSONAL OR REAL PROPERTY, OR FOR INJURY TO ANY PERSON.

This warranty does not apply to products which have been subject to improper use, accident, negligence, abuse or misuse.



ITEM	QTY	COMPONENT DESCRIPTION	ITEM	QTY	HARDWARE DESCRIPTION
1	2	OFFSET UPPER ISOLATOR BRACKET	A	8	3/8- 16 X 1-1/2 BOLT,NUT,WASHER,ASSY
2	2	CROSS BAR	B	4	POLY ISOLATOR
3	2	LOWER CROSS BAR BRACKET	C	8	5/8 HEX NUT
4	2	56" STANCHION	D	4	5/8 USS WASHER
			E	14	1/2- 13 X 1-3/4 BOLT,NUT,WASHER,ASSY

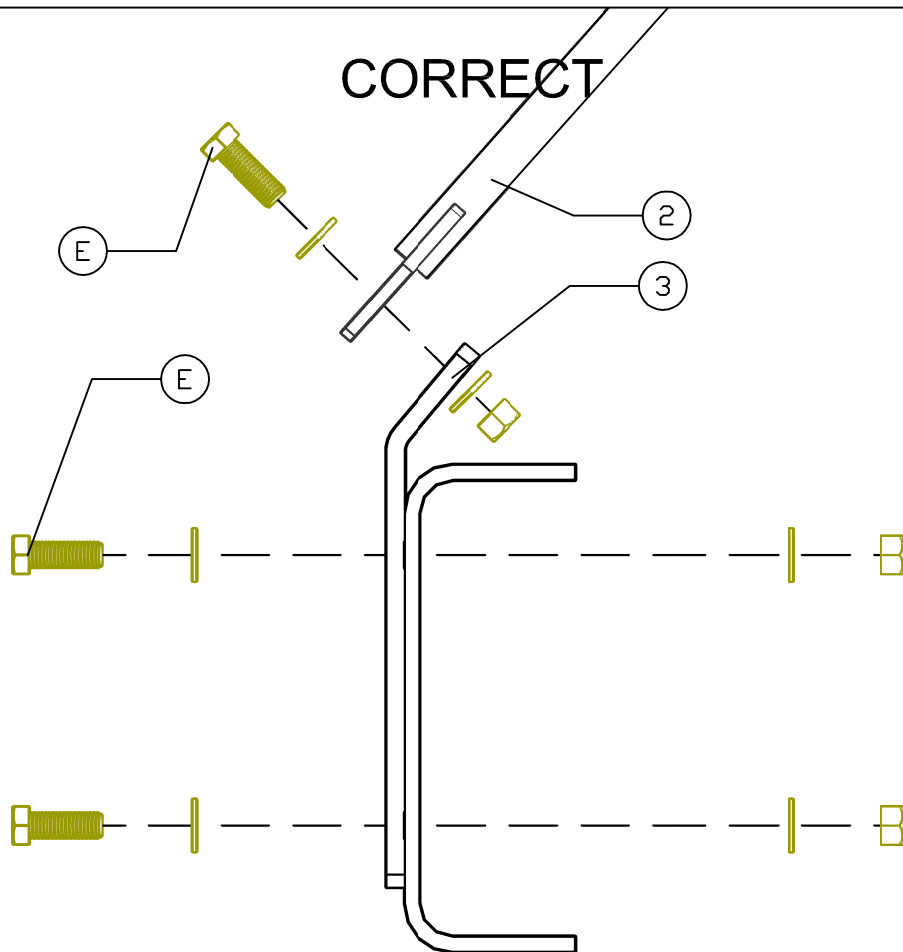
DIESEL EMISSIONS SERVICE PORTLAND REDDING OAKLAND ONTARIO 888-792-2922		
Size A	Drawing No. DES VM6023	
Scale NOT TO SCALE	CAD File	Sheet 1 OF 8



ITEM	QTY	HARDWARE DESCRIPTION
A	8	3/8 -16 X 1-1/2 BOLT,NUT,WASHER,ASSY
B	4	POLY ISOLATOR
C	8	5/8 HEX NUT
D	4	5/8 USS WASHER

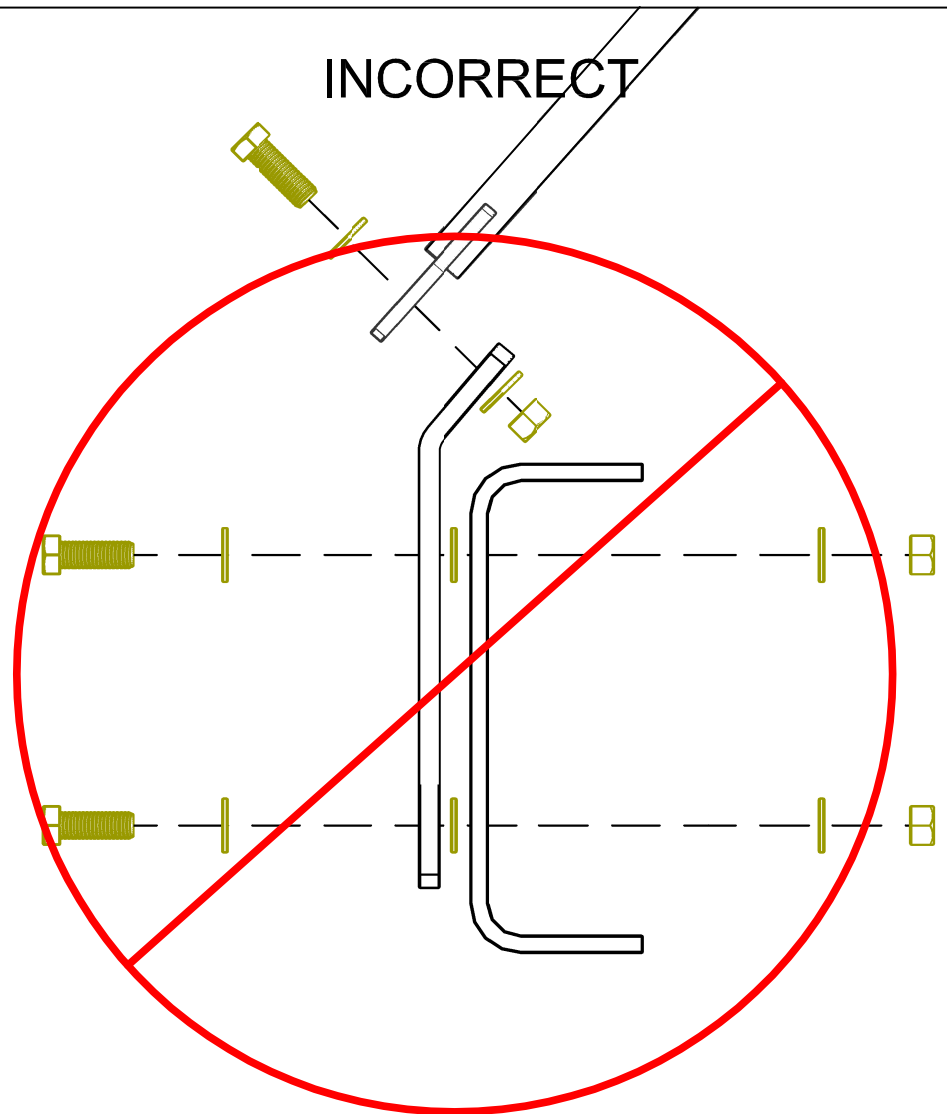
DIESEL EMISSIONS SERVICE PORTLAND REDDING OAKLAND ONTARIO 888-792-2922		
Size	Drawing No.	
A	DES VM6023	
Scale	CAD File	Sheet
NOT TO SCALE		2 of 8

CORRECT



LOWER CROSS BAR BRACKET (3) MUST SEAT FLUSH TO FRAME RAIL

INCORRECT



NEVER SPACE LOWER CROSS BAR BRACKET (3) AWAY FROM FRAME RAIL

DIESEL EMISSIONS SERVICE
PORTLAND REDDING OAKLAND ONTARIO
888-792-2922

Drawing No.

DES VM6023

Scale NOT TO SCALE

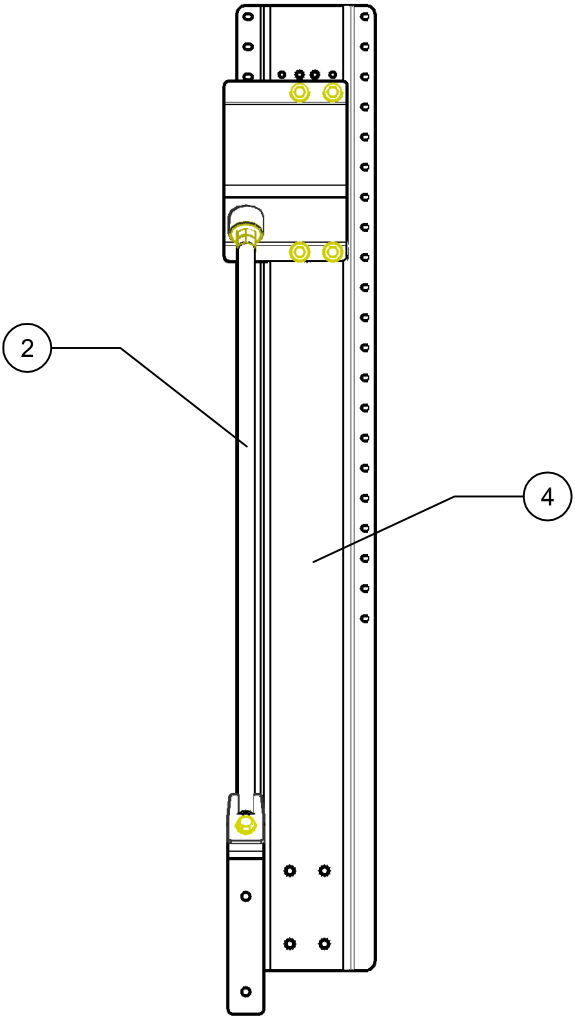
Size A

Sheet
3 of 8

ITEM	QTY	COMPONENT DESCRIPTION
2	2	CROSS BAR
3	2	LOWER CROSS BAR BRACKET

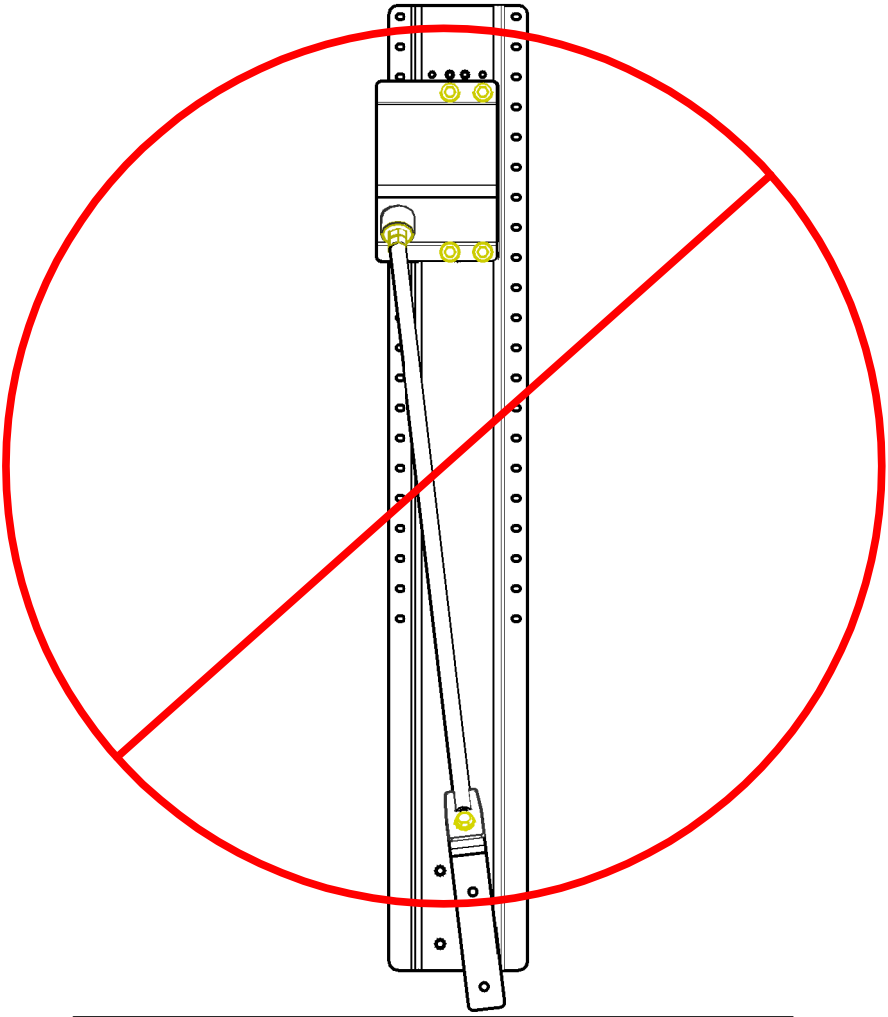
ITEM	QTY	HARDWARE DESCRIPTION
E	14	1/2 - 13 X1-3/4 BOLT,NUT,WASHER,ASSY

CORRECT



CROSS BAR (2) MUST BE PARALLEL TO
56" STANCHION (4)

INCORRECT



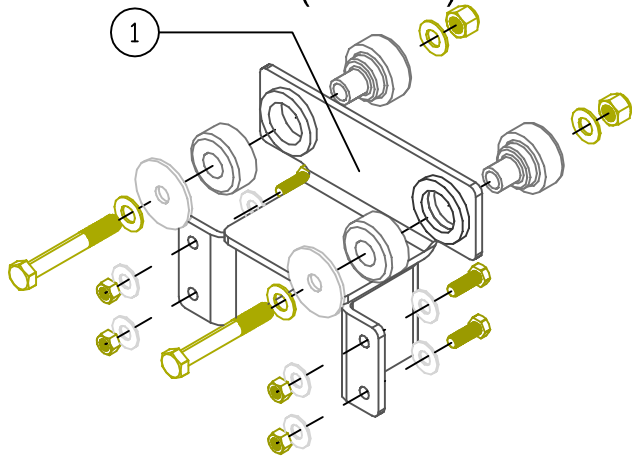
FAILURE TO INSTALL CROSS BAR (2) PARALLEL
TO 56" STANCHION (4) CAN COMPROMISE
BRACKET INTEGRITY AND RESULT IN BRACKET
FAILURE AND OR DAMAGE TO FILTER

ITEM	QTY	COMPONENT DESCRIPTION
2	2	CROSS BAR
4	2	56" STANCHION

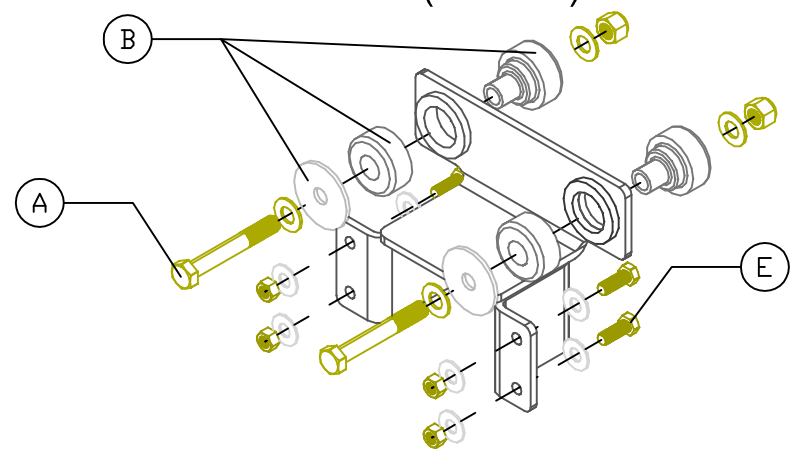
DIESEL EMISSIONS SERVICE
PORTLAND REDDING OAKLAND ONTARIO
888-792-2922

Drawing No. DES VM6023		
Scale NOT TO SCALE	Size A	Sheet 4 of 8

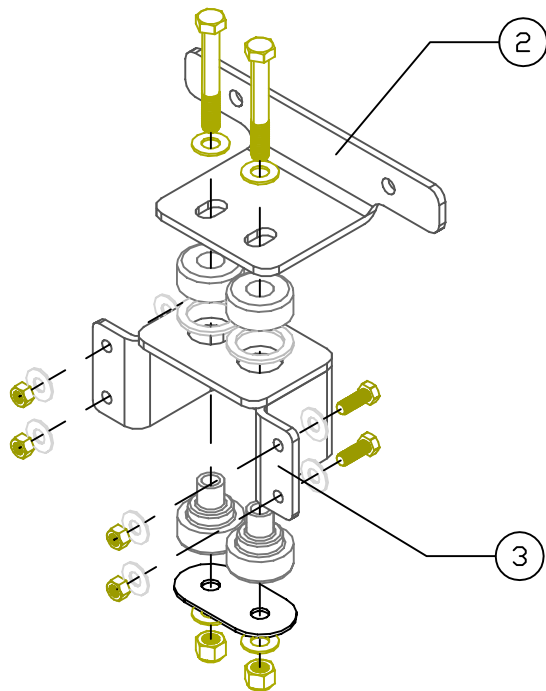
TOP ASSEMBLY (SHEAR) ISOLATION



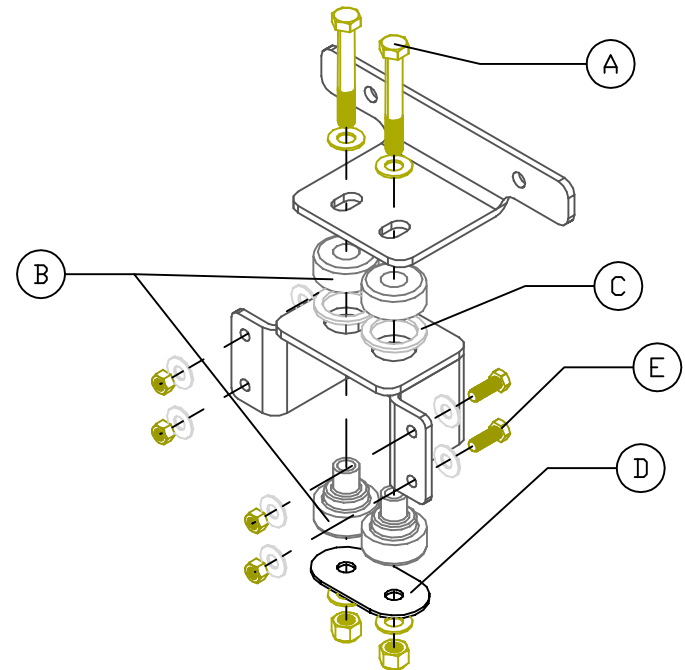
TOP ASSEMBLY (SHEAR) ISOLATION



BOTTOM ASSEMBLY (COMPRESSION) ISOLATION



BOTTOM ASSEMBLY (COMPRESSION) ISOLATION

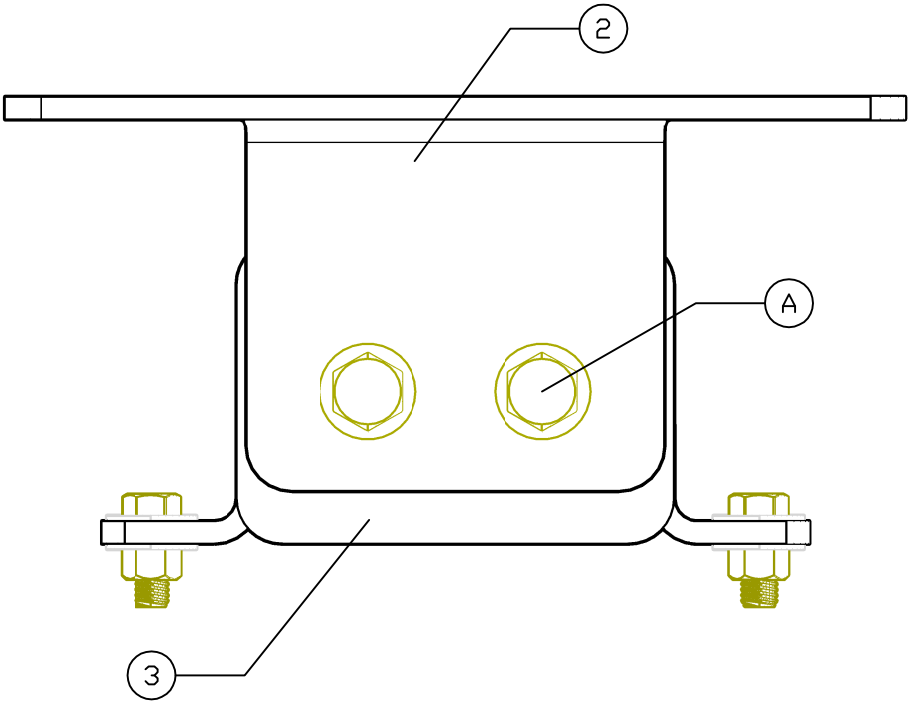


ITEM	QTY	COMPONENT DESCRIPTION	ITEM	QTY	HARDWARE DESCRIPTION
1	2	UPPER BRACKET ASSEMBLY	A	12	1/2 - 13 X 3-1/2 BOLT,NUT,WASHER,ASSY
2	4	LOWER BAND MOUNT	B	12	RUBBER ISOLATOR ASSEMBLY
3	4	LOWER BRACKET ASSEMBLY	C	8	1/8 SPACER WASHER
			D	4	STAINLESS LOWER ISOLATOR WASHER
			E	24	3/8 - 16 X1-1/2 BOLT,NUT,WASHER,ASSY

DIESEL EMISSIONS SERVICE
PORTLAND REDDING OAKLAND ONTARIO
888-792-2922

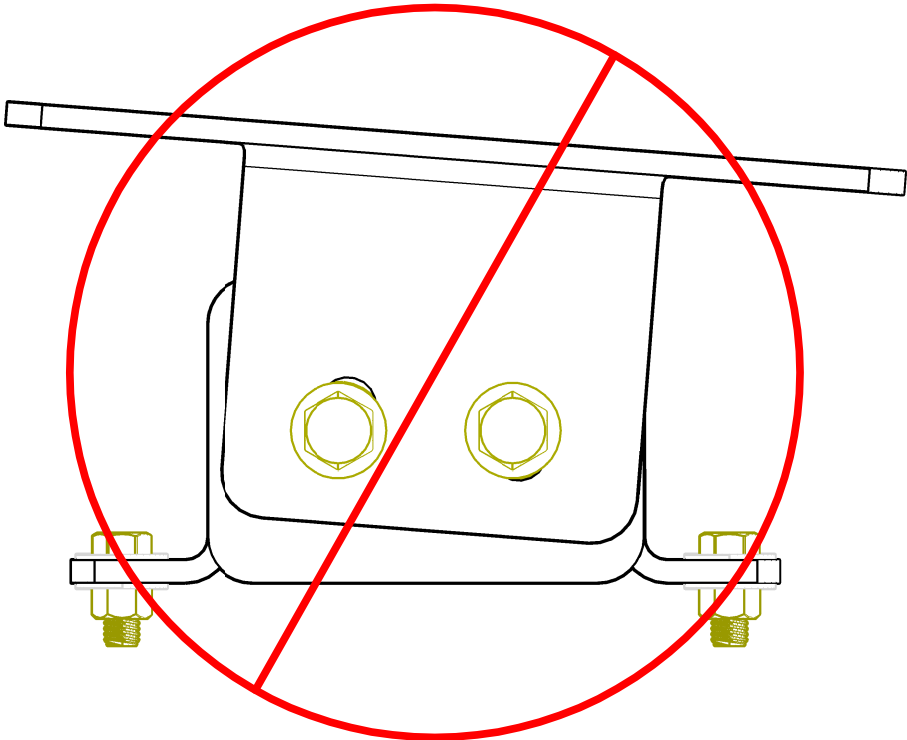
Size	Drawing No.	
A	DES VM6023	
Scale	CAD File	Sheet
NOT TO SCALE		5 OF 8

CORRECT



LOWER BAND MOUNT (2) MUST BE PARALLEL
WITH LOWER BRACKET ASSEMBLY (3)

INCORRECT



FAILURE TO INSTALL LOWER BAND MOUNT
(2) PARALLEL TO LOWER BRACKET
ASSEMBLY (3) CAN RESULT IN BRACKET
FAILURE AND OR DAMAGE TO FILTER

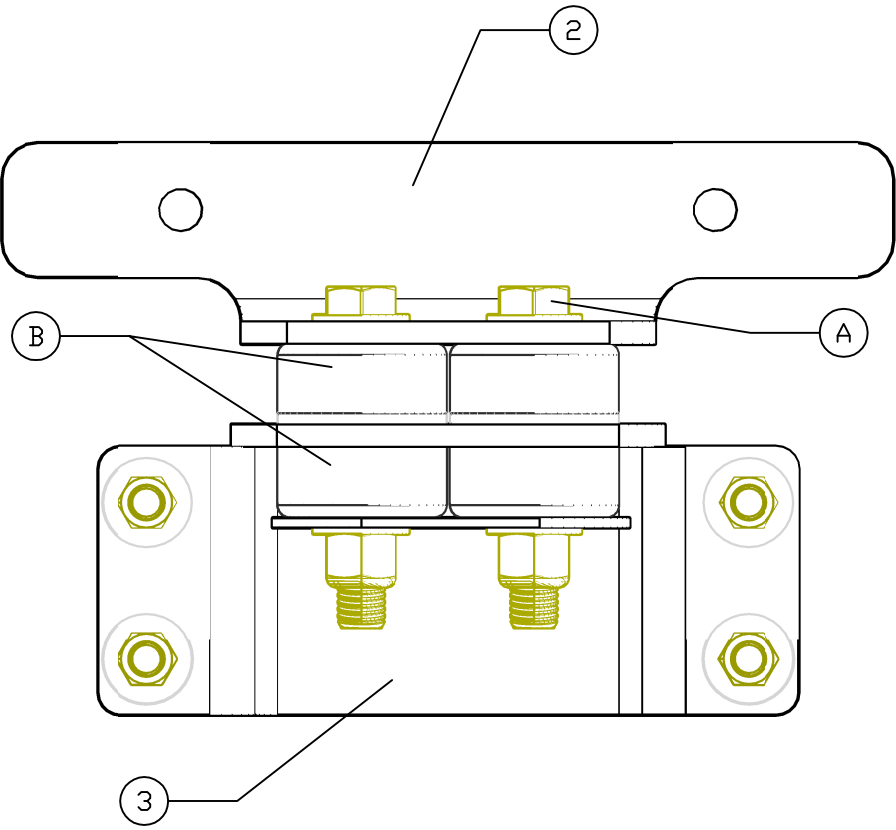
ITEM	QTY	COMPONENT DESCRIPTION
2	4	LOWER BAND MOUNT
3	4	LOWER BRACKET ASSEMBLY

ITEM	QTY	HARDWARE DESCRIPTION
A	12	1/2 -13 X 3-1/2 BOLT,NUT,WASHER,ASSY

DIESEL EMISSIONS SERVICE
PORTLAND REDDING OAKLAND ONTARIO
888-792-2922

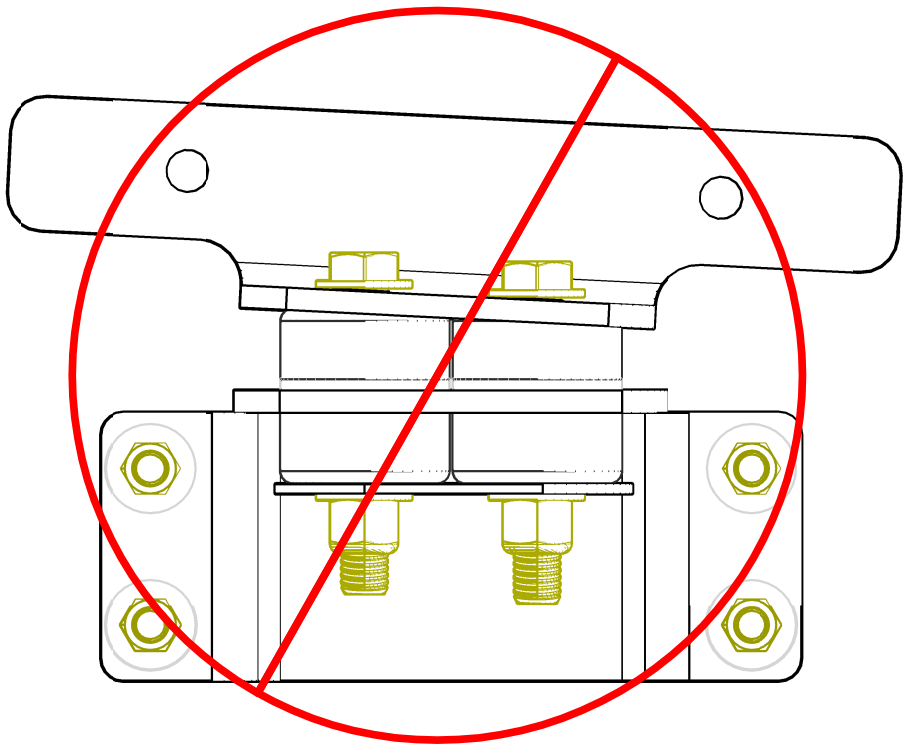
Size A	Drawing No. DES VM6023
Scale NOT TO SCALE	Sheet 6 OF 8


CORRECT



ISOLATORS (B) MUST BE COMPRESSED
EQUALLY BETWEEN LOWER BAND MOUNT (2)
AND LOWER BRACKET ASSEMBLY (3)

INCORRECT

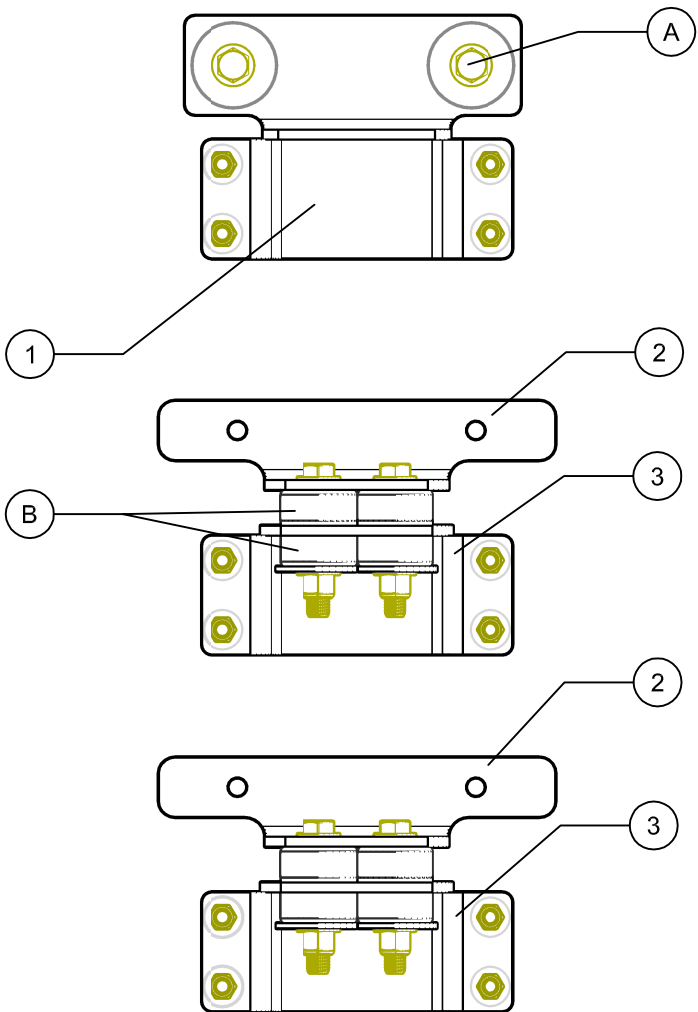


 IMPROPER ISOLATOR COMPRESSION
BETWEEN LOWER BAND MOUNT (2) AND
LOWER BRACKET ASSEMBLY (3) CAN
RESULT IN BRACKET FAILURE AND OR
DAMAGE TO FILTER

ITEM		QTY	COMPONENT DESCRIPTION	ITEM	QTY	HARDWARE DESCRIPTION	Size		Drawing No.	
2		4	LOWER BAND MOUNT	A	12	1/2 -13 X3-1/2 BOLT,NUT,WASHER,ASSY	A		DES VM6023	
3		4	LOWER BRACKET ASSEMBLY	B	12	RUBBER ISOLATOR ASSEMBLY	Scale NOT TO SCALE		Sheet	7 OF 8

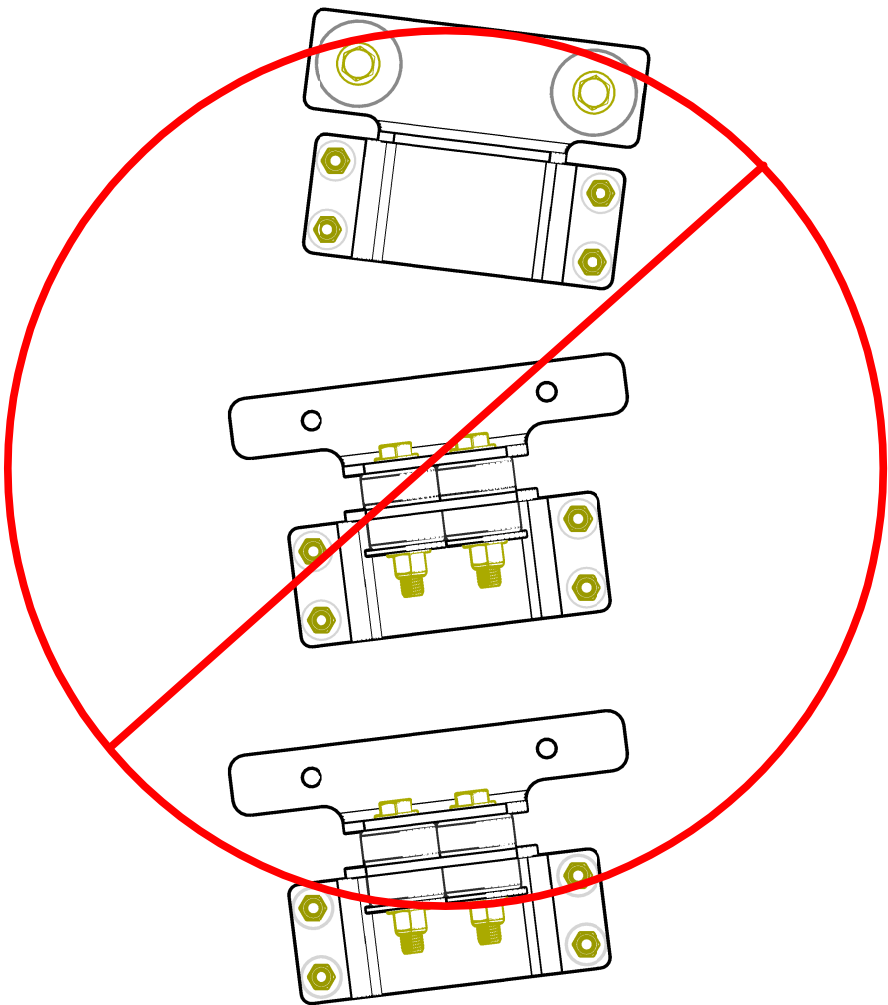
DIESEL EMISSIONS SERVICE
PORTLAND REDDING OAKLAND ONTARIO
888-792-2922

CORRECT



UPPER BRACKET ASSEMBLY (1) MUST BE PARALLEL TO LOWER BAND MOUNTS (2) AND LOWER BRACKET ASSEMBLIES (3)

INCORRECT



IMPROPER ALIGNMENT OF UPPER BRACKET ASSEMBLY (1) TO LOWER BAND MOUNTS (2) AND LOWER BRACKET ASSEMBLIES (3) CAN RESULT IN BRACKET FAILURE AND OR DAMAGE TO FILTER

ITEM	QTY	COMPONENT DESCRIPTION
1	2	UPPER BRACKET ASSEMBLY
2	4	LOWER BAND MOUNT
3	4	LOWER BRACKET ASSEMBLY

ITEM	QTY	HARDWARE DESCRIPTION
A	12	1/2 -13 X3-1/2 BOLT,NUT,WASHER,ASSY
B	12	RUBBER ISOLATOR ASSEMBLY

DIESEL EMISSIONS SERVICE
PORTLAND REDDING OAKLAND ONTARIO
888-792-2922

Drawing No. DES VM6023		
Scale NOT TO SCALE	Size A	Sheet 8 OF 8