



NEPORT/GPRA

PDE STAC & EIC Meeting

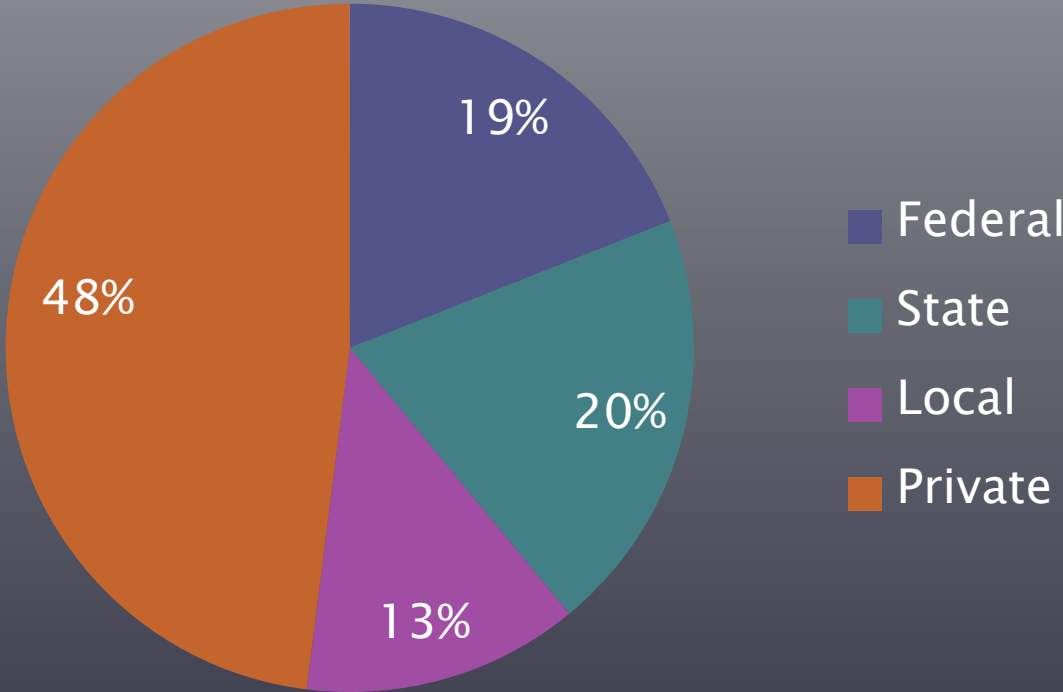
September 11, 2014

Jen Adkins & Priscilla Cole

NEPORT/GPRA – Leveraging

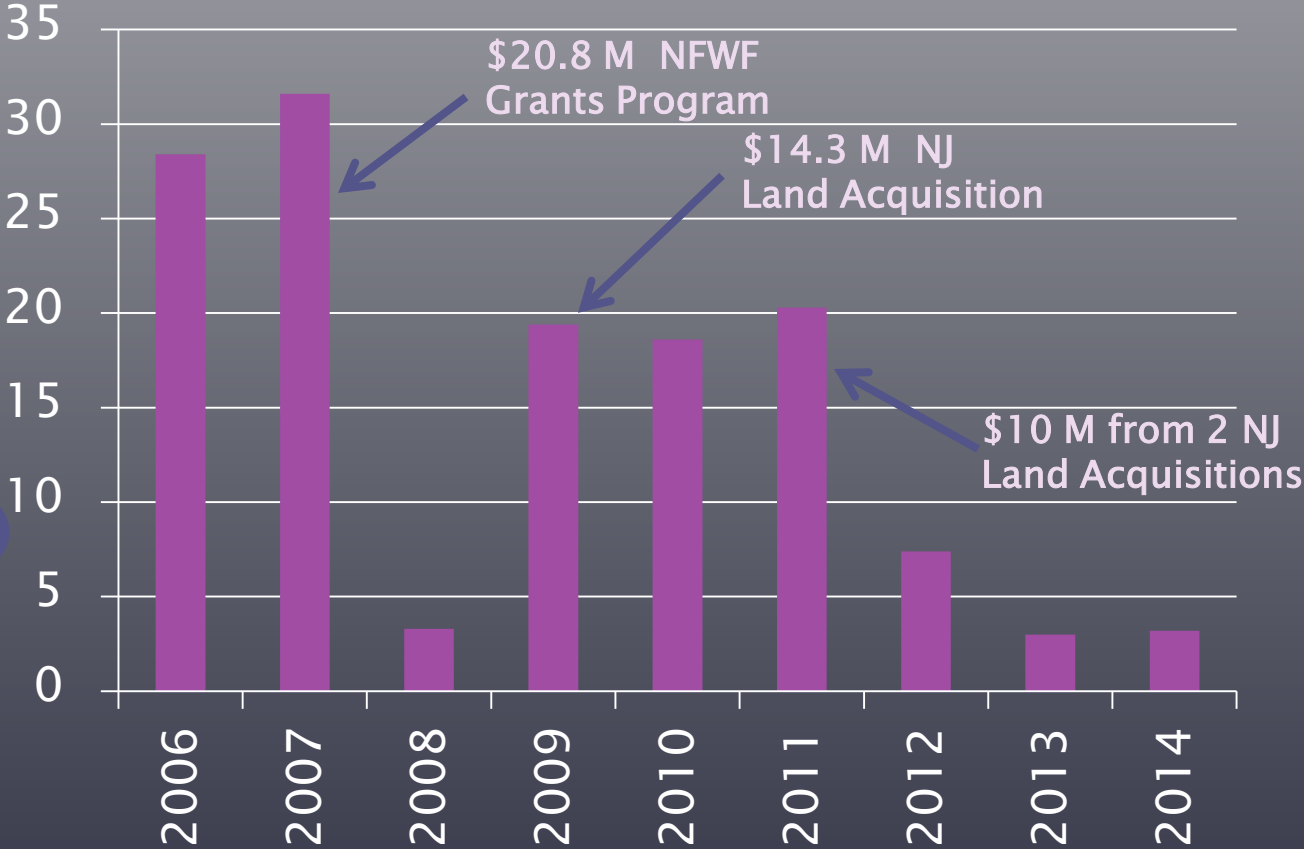
This year: \$3,153,890

Leveraging \$'s by Percentage



NEPORT/GPRA – Leveraging

Dollars in Millions 2006–2014

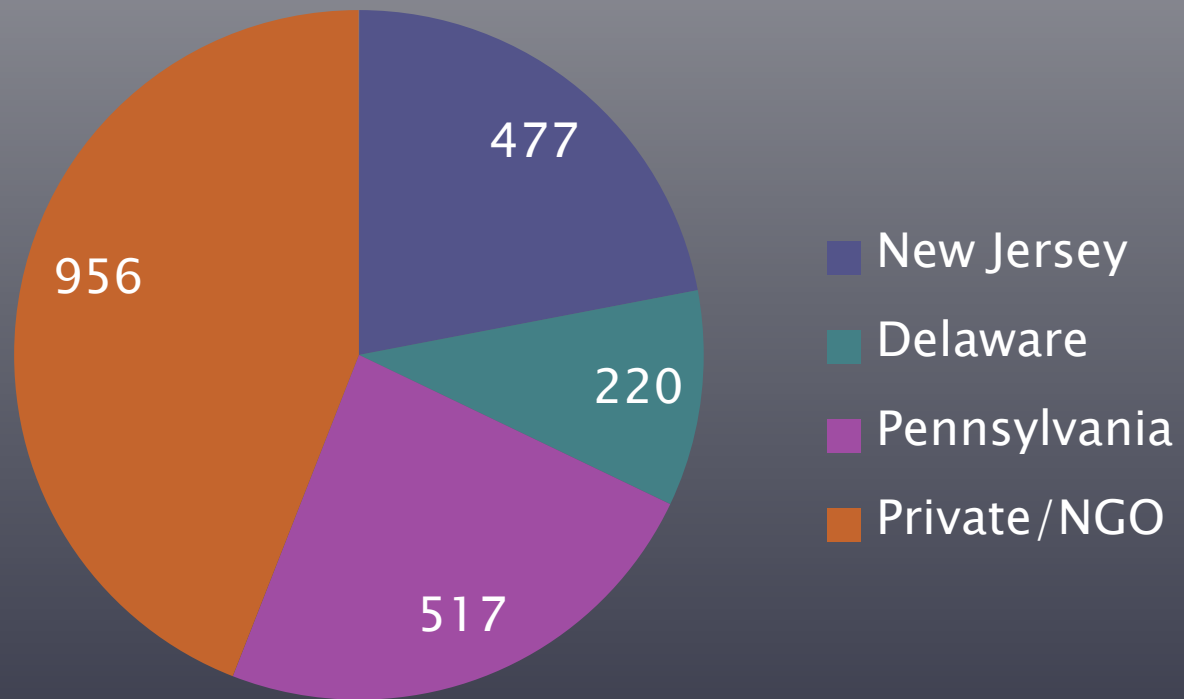


NEPORT/GPRA – Habitat

Goal: 2250 acres

2014: ~2170 acres (subject to approval by EPA)

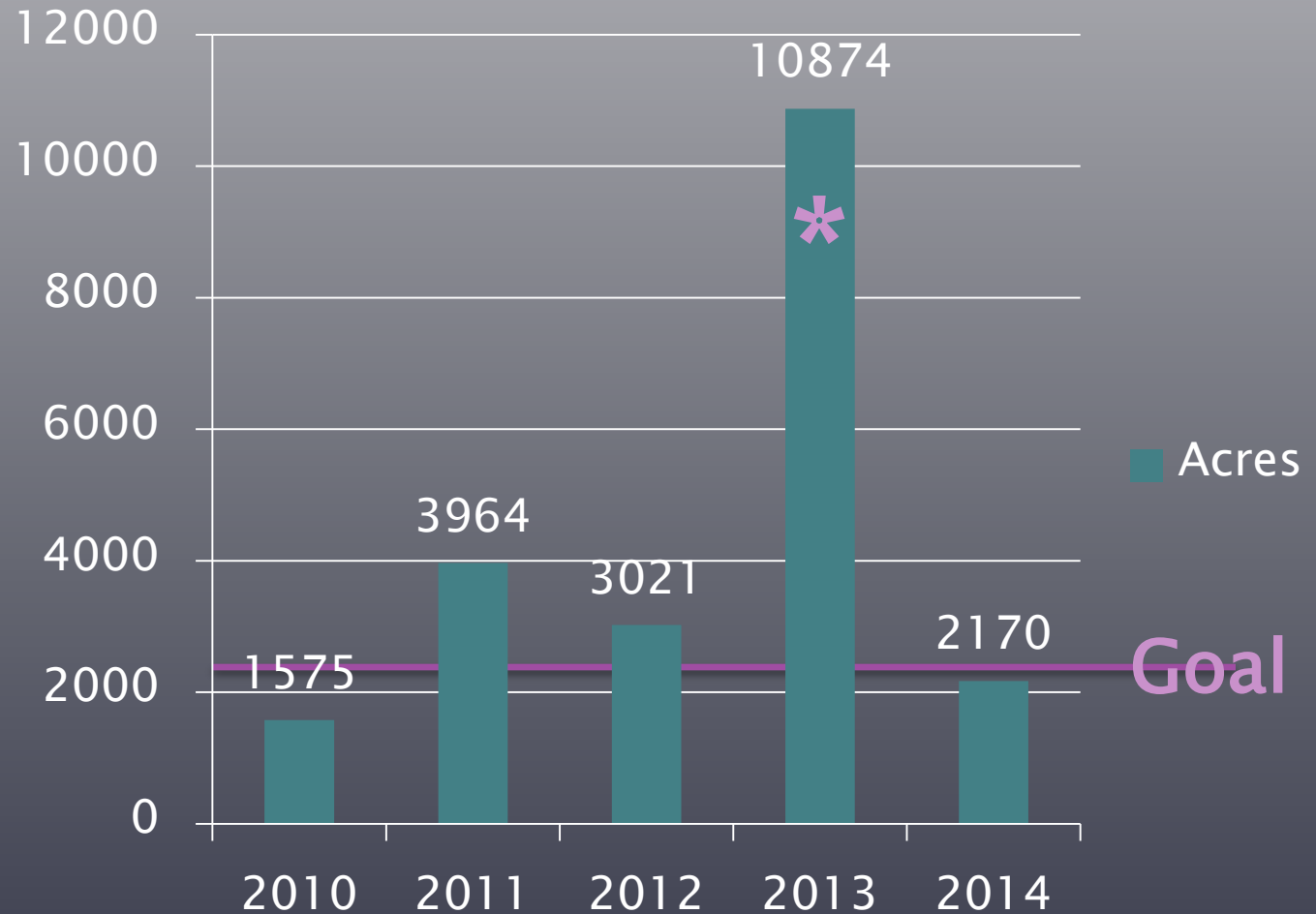
2014 Habitat Acres



* Private acres are unpredictable

NEPORT/GPRA – Habitat

Acres Reported by Year



*Boost in 2013 came from First State National Monument Designation



CCMP ACTION W7.5 DISCUSSION

PDE STAC & EIC Meeting

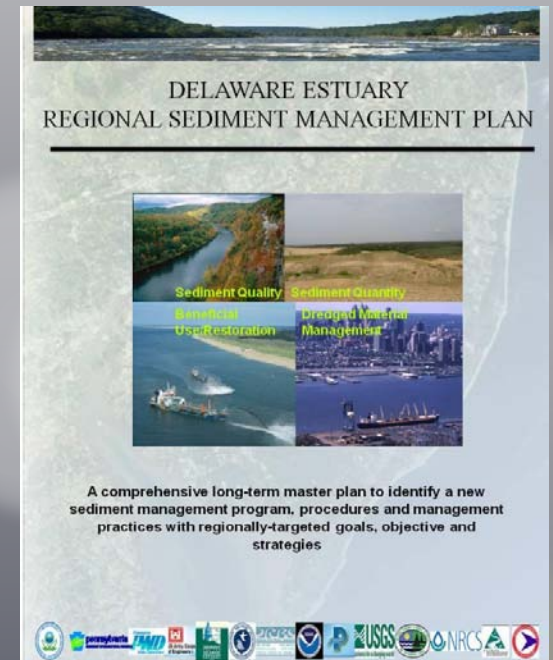
September 11, 2014

Danielle Kreeger & Priscilla Cole

New CCMP Action Discussion

W7.5 – Support the Regional Sediment Management Plan

RSMP: *“We in the Delaware Estuary are at a crossroads when it comes to sediment management”*



A Regional Sediment Management Plan for the Delaware Estuary was completed in 2013 to link interests regarding navigation/commerce, flood control, and ecosystem restoration for the watershed. It recommends numerous actions to also improve communication amongst stakeholders and the public, develop better technology to manage impacts from dredging, develop a better understanding of the processes that impact the sources, transport and fate of sediment in the system, and to promote the sustainable beneficial use of dredged material in ecological restoration projects. To adopt this plan fully is the goal of the Regional Sediment Management Workgroup. This will be accomplished through a commitment of personnel to serve on the workgroup, efforts to incorporate recommendations into policies and activities by program partners, and adoption of the Regional Sediment Management Plan as an update to the CCMP.



CCMP – PROGRESS & UPDATES

PDE STAC & EIC Meeting

September 11, 2014

Danielle Kreeger & Priscilla Cole

Progress Website

CCMP - Progress (DRAFT)

View

Edit

Log

CCMP

Progress

Updates



In 1996, the Comprehensive Conservation Management Plan (CCMP) became the founding document of the Delaware Estuary Program. The CCMP established the first goals and targets for healthy habitats, clean water, and a high quality of life for residents of the Delaware Estuary.

Much has changed since 1996, including many plans and programs that advanced the original vision of the CCMP. The items below update and build upon the original structure of the CCMP. The CCMP is still the core guiding document for the Delaware Estuary Program, but it is also a living document with the following additions. Some of these contributions were made directly by Partnership for the Delaware Estuary, and others were initiated by our partners in the wider Delaware Estuary Program.

- + Land Management**
- + Waste Water Management**
- + Habitat & Living Resources**
- + Education & Involvement**
- + Toxics**
- + Monitoring**

CCMP Updates

- Retain original plan for reference
- Show implementation progress
- Feature any updates to plan

CCMP - Progress (DRAFT)

View

Edit

Log

CCMP

Progress

Updates



In 1996, the Comprehensive Conservation Management Plan (CCMP) document of the Delaware Estuary Program. The CCMP established targets for healthy habitats, clean water, and a high quality of life for Delaware Estuary.

Much has changed since 1996, including many plans and programs original vision of the CCMP. The items below update and build upon

Progress Example

Each Action Listed As:

- Updated
- Progress Identified
- Ongoing
- Under Review

E16 - Utilize Electronic Bulletin Boards to Disseminate Information

Progress Identified:

- Electronic bulletin boards are an outdated concept, but the PDE website has taken on many informational needs: Partnership for the Delaware Estuary Website
- Eco Delaware
- Schuylkill Action Network
- Green City, Clean Water Art Contest
- Philadelphia: Green City, Clean Waters

UPDATED - See 'Updates' tab

E17 - Establish Estuarine Resource Sections Within Existing Libraries and Environmental Centers

Ongoing

E18 - Organize and Implement Storm Drain Stenciling Programs

Ongoing

E19 - Urge School Administrators to Incorporate Estuary Education in Curricula and Establish Challenge Grants

Progress Identified:

- Schuylkill Action Students
- Teacher's Guide
- Rain Gardens for the Bays
- Alliance for New Jersey Environmental Education
- NJ State Environmental Education Directory (SEEDS)
- New Jersey Environmental Education Fund

E20 - Develop and Place Permanent Estuary Displays

Ongoing

E21 - Develop a Mascot for the Estuary

UPDATED - See 'Updates' tab

E22 - Establish a Delaware Estuary Environmental Badge

UPDATED - See 'Updates' tab

CCMP Updates

E16 – Utilize Electronic Bulletin Boards to Disseminate Information

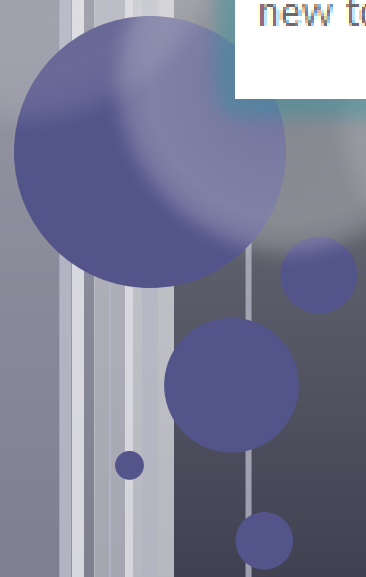
In 2014, this action was updated to replace “Electronic Bulletin Boards” with “Websites” to reflect that fact that the utility of an electronic bulletin board has been replaced by the use of websites. This action is being accomplished by the PDE Website (www.DelawareEstuary.org) and other partner websites that disseminate information about the Estuary. Statistics on web visits and downloads are reported in the PDE’s annual work plan, which is approved by the Estuary Implementation Committee each year.



CCMP Updates

E21 – Develop a Mascot for the Estuary

In 2014, this action was eliminated because it's outdated. A Horseshoe Crab Harry mascot was developed and used in outreach materials for a period of time. PDE is engaged in an ongoing effort (with partners) to identify and employ new tools for connecting with key audiences, including kids and teachers.

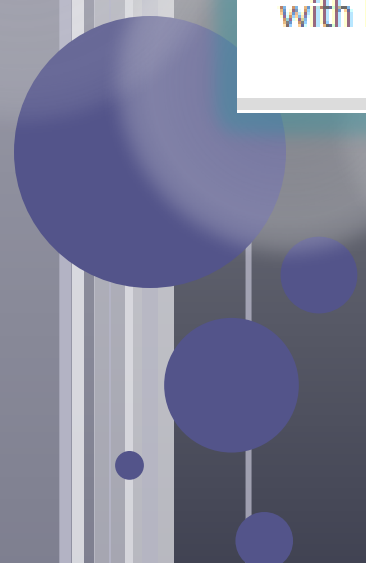




CCMP Updates

E22 – Establish a Delaware Estuary Environmental Badge

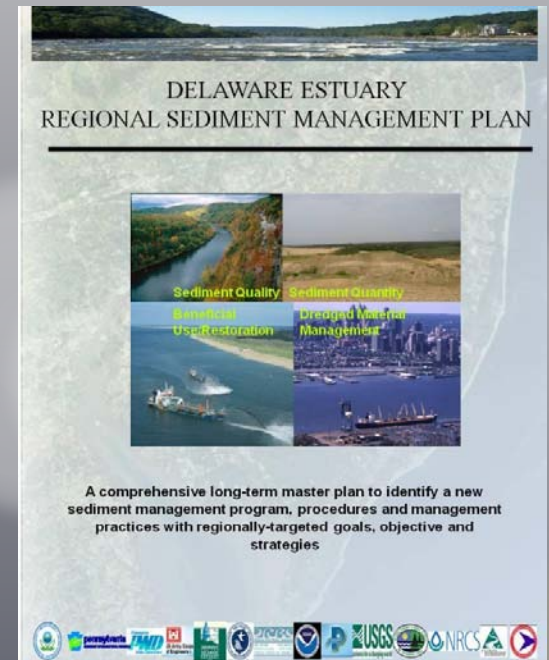
In 2014, this action was eliminated because it's outdated. PDE is engaged in an ongoing effort (with partners) to identify and employ new tools for connecting with key audiences, including kids and teachers.



CCMP Updates

W7.5 – Support the Regional Sediment Management Plan

RSMP: *“We in the Delaware Estuary are at a crossroads when it comes to sediment management”*




A Regional Sediment Management Plan for the Delaware Estuary was completed in 2013 to link interests regarding navigation/commerce, flood control, and ecosystem restoration for the watershed. It recommends numerous actions to also improve communication amongst stakeholders and the public, develop better technology to manage impacts from dredging, develop a better understanding of the processes that impact the sources, transport and fate of sediment in the system, and to promote the sustainable beneficial use of dredged material in ecological restoration projects. To adopt this plan fully is the goal of the Regional Sediment Management Workgroup. This will be accomplished through a commitment of personnel to serve on the workgroup, efforts to incorporate recommendations into policies and activities by program partners, and adoption of the Regional Sediment Management Plan as an update to the CCMP.



CCMP Updates

W8 – Utilize RIMS for Information Management that Facilitates Port Operations and Safety

In 2014, this action was eliminated because it's longer applicable. The RIMS system is no longer functional and port operations and safety needs are now being met through other means.






CCMP Updates

R1 – Implement RIMS on a Pilot Scale for One Year

In 2014, this action was eliminated because it's longer applicable. Efforts were made to pilot the use of RIMS early on in the life of the program but the RIMS system is no longer functional.



CCMP Updates

R2 – Implement RIMS in Expanded Form

In 2014, this action was eliminated because it's longer applicable, since RIMS is no longer functional. However, the concepts behind RIMS are still warranted and should be incorporated into other monitoring plans/systems developed for the Estuary, including (but not limited to) the Delaware Estuary Watershed to Ocean Observing System proposed as a pilot in 2005.