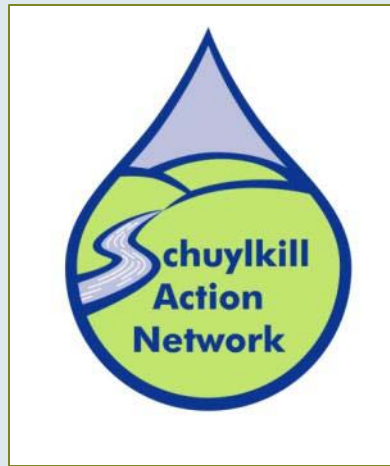


Watershed Land Protection Collaborative



**SCHUYLKILL ACTION NETWORK
ANNUAL MEETING 2014**



Watershed Land Protection Collaborative



To promote a sustainable landscape in the Schuylkill River Watershed through strategic conservation and efficient land use and management to protect the integrity of water supplies for future generations.



Lead Partners



- *Partnership for the Delaware Estuary*
- *Natural Lands Trust*
- *Berks Conservancy*
- *Green Valley Watershed Association*
- *French and Pickering Creek Conservation Trust*
- *National Audubon Society*
- *Montgomery County Conservation District*
- *Chester County Department of Open Space Preservation*
- *Stroud Water Research*
- *Berks County Planning Commission*
- *William Penn Foundation*
- *Philadelphia Water Department*
- *Delaware Valley Regional Planning Commission*

William Penn Foundation Cluster Initiative

Poconos Kittatinny

NJ Highlands

Upper Lehigh

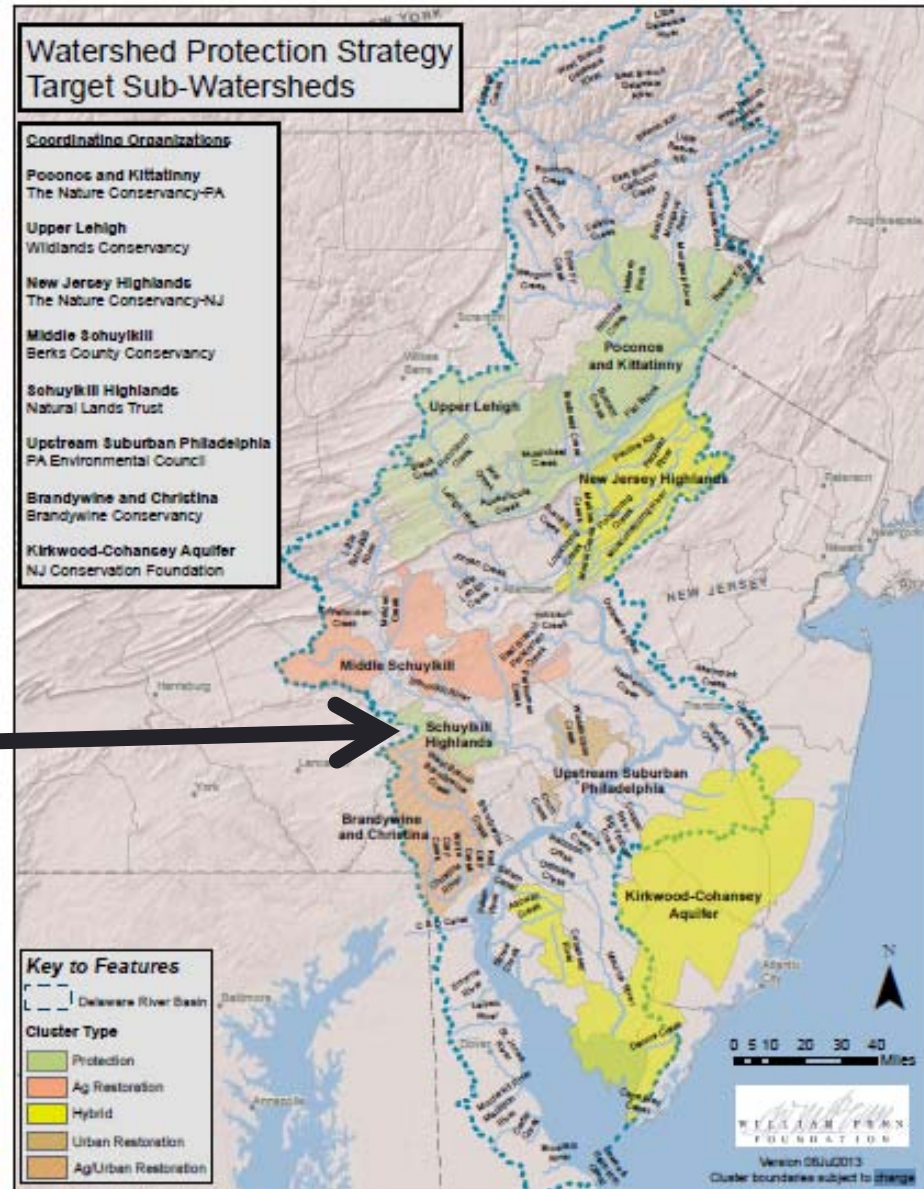
Middle Schuylkill

Schuylkill Highlands

Pinelands/Bayshore
Aquifer

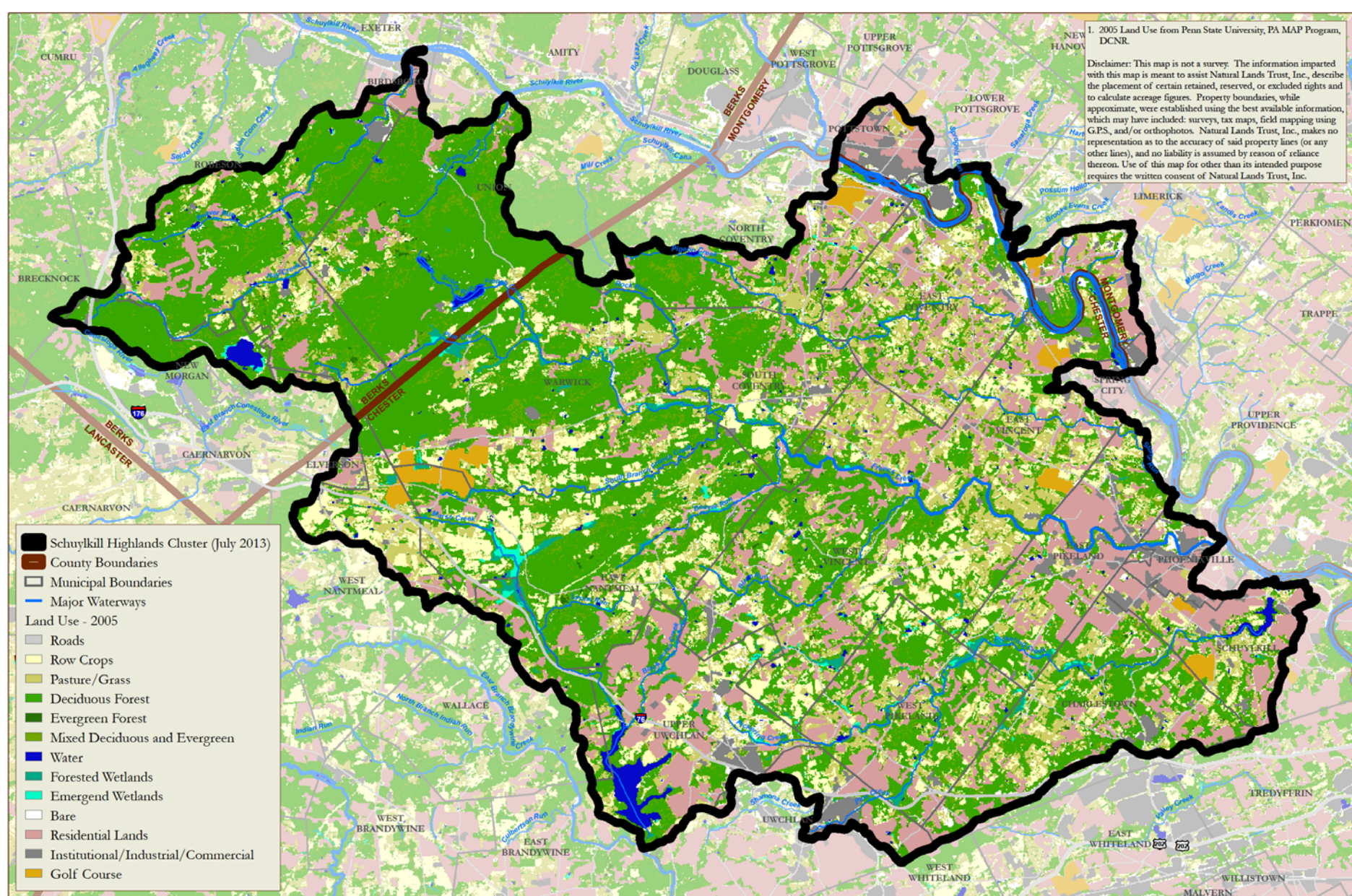
Brandywine Christina

Philly Urban



1. 2005 Land Use from Penn State University, PA MAP Program, DCNR.

Disclaimer: This map is not a survey. The information imparted with this map is meant to assist Natural Lands Trust, Inc. describe the placement of certain retained, reserved, or excluded rights and to calculate acreage figures. Property boundaries, while approximate, were established using the best available information, which may have included: surveys, tax maps, field mapping using GPS, and/or orthophotos. Natural Lands Trust, Inc. makes no representation as to the accuracy of said property lines (or any other lines), and no liability is assumed by reason of reliance thereon. Use of this map for other than its intended purpose requires the written consent of Natural Lands Trust, Inc.



What we're doing

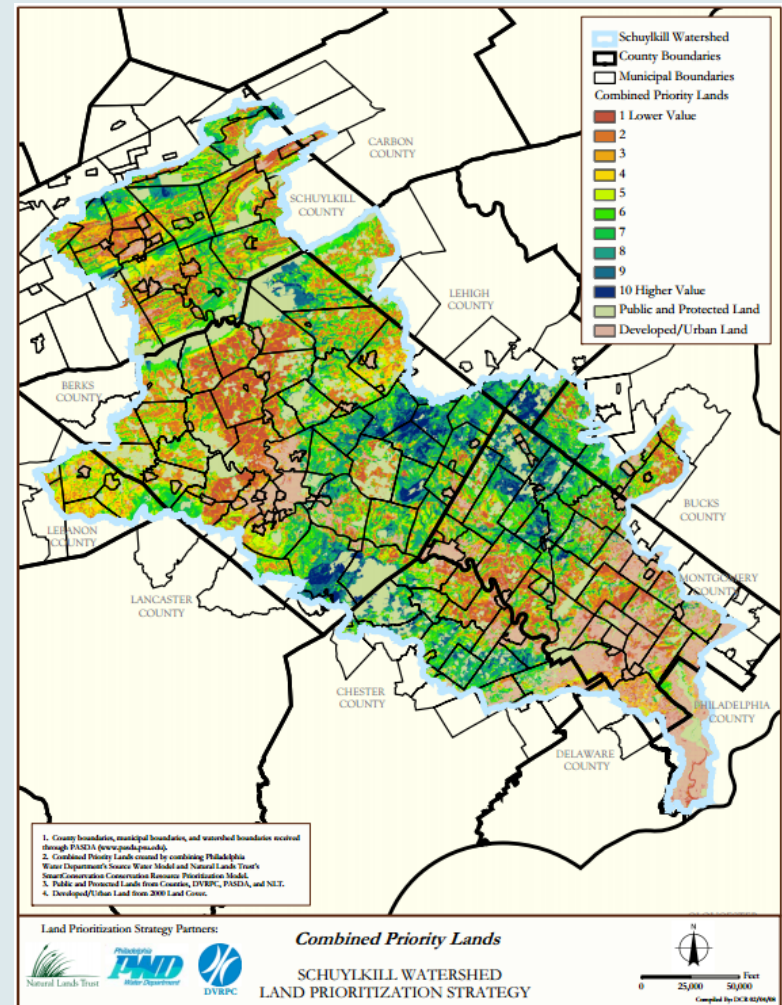


- Integrating conservation efforts of organizations, agencies, efforts in the Schuylkill Watershed
- Identify high value convergence of efforts that can lead to increased conservation.
- Diminish redundancies. Improve efficiencies
- Transfer knowledge, successes, and strategies throughout watershed.



Gain Knowledge – Share with other focus areas

- **Priority Lands Tool**
 - Available at:
<http://delawareestuary.org/node/182>
- **Expand into the Upper Perkiomen**
- **Increase resources for expanding program**



Vision from Cluster



- Promote collaboration and action around key strategies:
 - Conservation
 - Engagement
 - Technical Assistance
 - Monitoring



Conservation Strategies



Land Prioritization:

Develop and update prioritization maps.

- Development of sub-watershed model suggested
- Focusing on 30 acre parcel gained support



Conservation Progress:

Permanently Protect at least 1350 acres of high priority lands

- Partners working on 13 projects in sub-regions
- Nearly 400 acres in projects underway

Conservation Strategies



Open space funding:

Working to develop municipal conservation strategies.

- Municipal meetings underway by FPCCT



BMP Implementation:

Complete 4 BMP projects on privately-protected lands

- Ag restoration project underway in East Nantmeal Twp.
- Chester County Dept. of Open Space is helping to ID sites

Engagement



Landowner Engagement Events:

Hold 3 annual landowner engagement events.

- Over 100 people attended June 2014 Event
- West Vincent Twp. event held in October
- Berks County event being held Nov. 19th



Land use workshops:

Hold 5 land-use workshops for targeted audiences

- Information gathering stage. Workshops planned for 2015.
- Targets: large properties, land managers, municipalities, homeowner associations, and residents, etc.

Technical Assistance



Municipal buffer ordinance:

Review and assess municipal buffer ordinances

- Municipal review of ordinances underway.
- Matrix developed to assess ordinance strengths.



Municipal land-use ordinances:

Provide technical assistance to 4 municipalities to review, revise and improve existing ordinances .

- Workshop for municipal managers and supervisors held.
- Review underway with 4 of the 9 municipalities who attended.



HOA outreach program:

Develop outreach program for HOA's to identify, construct, and publicize 2 high-profile, restoration demonstration projects.

- HOA letters being sent out Fall 2014.
- Greening guide for HOAs being developed.

Monitoring



Monitoring Plan overview:

Develop a comprehensive professional monitoring program

- Developed by Green Valley Watershed Association
- More to report this afternoon.



Schuylkill Watershed Stewards:

Volunteer monitoring program

- 5 class program graduated 20 volunteers from Berks & Chester Counties in October.
- Volunteers are a critical piece of the monitoring program.

Collaboration



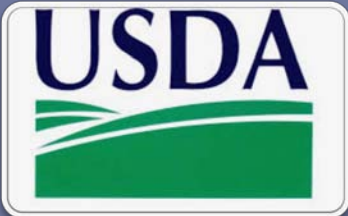
Workgroup Meetings :

Convene quarterly meetings of partners and key stakeholders to develop, implement and track workplan.



Key stakeholder engagement:

Work more cooperatively with other regional initiatives such as the Schuylkill Highlands Conservation Landscape Initiative and Hopewell Big Woods Partnership



Other funding needs

Identify, target and leverage public and private funding programs to secure increased funding

- Land Transaction Assistance Program
- NRCS Regional Conservation Partnership Program

Collaboration



Watershed Land Collaborative

Coordination

Organize
efforts

Partner on existing
activities

Find new ideas

Keep everyone
up to date



Conclusion - We hope to:



- Show progress in protecting & improving water quality
- Protect the most important lands for watershed health
- Prove the benefits of collaboration
- Increase resources for conservation
- Use this effort as a model to empower other good work



Thank you!



DULCIE FLAHARTY
VICE PRESIDENT, COMMUNITY PARTNERSHIPS
NATURAL LANDS TRUST

DFLAHARTY@NATLANDS.ORG

610-353-5587 X218