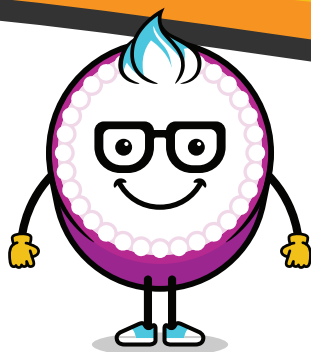


## PRINTER & SCANNER SET UP & INSTALLATION INSTRUCTIONS

▶ VISIT [DECOPAC.COM](http://DECOPAC.COM)  
FOR PHOTOCAKE  
PRINTER MAINTENANCE  
VIDEOS!



**NOTE:**  
DO NOT CONNECT TO WI-FI  
DO NOT UPDATE THE FIRMWARE

### CONTENTS



*Shown: Epson XP-3200 for example only.*

- Printer
- Power Cable
- USB Cable
- Removable Output Tray
- Sample Pack of Ink Cartridges

*\* Remove all clear plastic protective wrap, foam and blue tape from the Printer.*

### PRINTER SET UP



### INK CARTRIDGE INSTALLATION



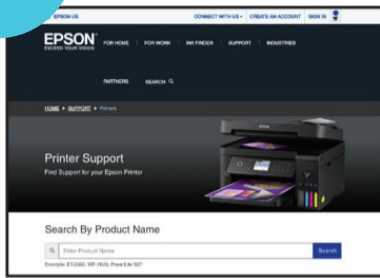
*Ensure removal of yellow pull tab!*

1. Extend the Input Tray on the back of the Printer. Adjust the gray paper feed guides to their furthest position.
  2. Extend the Output Tray in front of the Printer and lift the tab up on the end of the extension.
  3. Slide the removable Output Tray onto the Printer's Output Tray extension ensuring the extension tab slides through the slot on the removable tray.
  4. Connect the Power Cable into the back and power it on.
- 
1. After selecting your language, follow prompts on screen to install Ink Cartridges.
  2. Select 'No' when asked to finish setup using Epson smart panel App. On XP-4200 model, select 'OK' when asked to continue without the App.
  3. Once Ink Cartridges have been installed, close the Printer cover and press 'Start' or 'Installed'. Ink Cartridge initialization is completed.
  4. Select 'Adjust later' when prompted to align the Print Head. The Home Screen will now appear.

## INSTALLATION

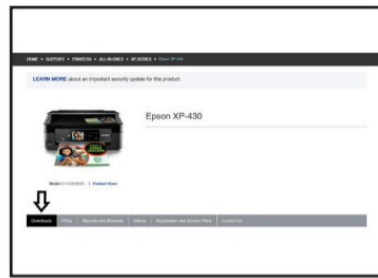
Epson Printer/ Scanner Drivers Installation Visit: [https://www.epson.co.uk/en\\_GB/support](https://www.epson.co.uk/en_GB/support)

1.



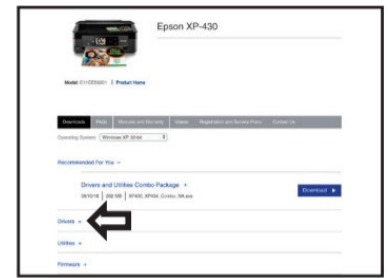
1. Type the Printer model in the search bar and navigate to the Printer model. Select 'Downloads'.

2.



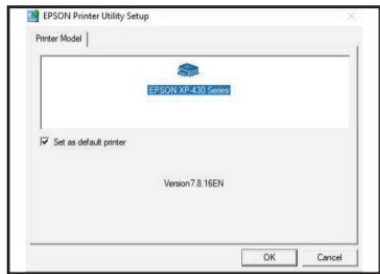
2. Download the 'Driver' (not the 'Remote Printer Driver' or the Combo packages).

3.



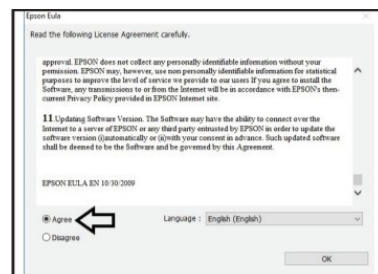
3. Once the download is complete, click the downloaded file. (This should appear in the 'Downloads' section of your browser.)

4.



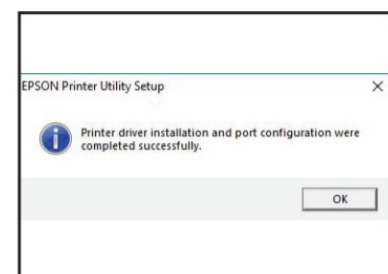
4. Ensure 'Set as default Printer' box is checked, and 'Automatically Update' is unchecked in the checkbox. Select 'OK'.

5.



5. Select the language. Click 'OK'. Read agreement and select 'Agree'. Click 'OK'.

6.

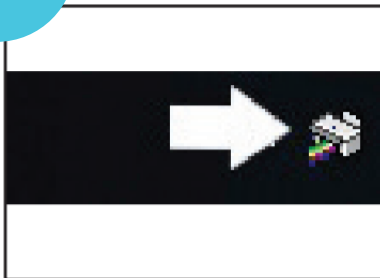


6. Connect the USB cable and wait until installation is completed. This may take a few minutes. Click 'OK'.  
**REPEAT STEPS 2-6 TO INSTALL SCANNER DRIVER**

## FIRMWARE UPDATES

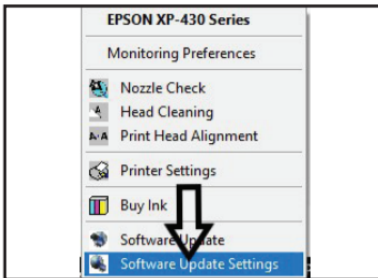
### Disable Automatic Firmware Updates

1.



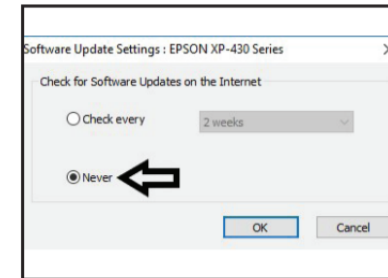
1. On the task bar, click on the arrow pointing up and you should see the Printer's icon.

2.



2. Right click the Printer icon and select 'Software Update Settings'.

3.



3. Select 'Never', then click 'OK'.

## CONGRATULATIONS!

Your Printer Set-Up is now complete!

## NEED MORE HELP?

For additional assistance contact Technical Support at 1-800-644-1228  
Monday-Friday 7AM-7PM  
Saturday 7AM-2PM Central Time

**DECOPAC**



3500 THURSTON AVENUE • ANOKA, MINNESOTA 55303  
1-800-DECOPAC (1-800-332-6722)  
ESPAÑOL: 1-800-898-3063 FAX: 763-502-0534  
PHOTOCAKE® TECHNICAL ASSISTANCE: 1-800-644-1228

PhotoCake® is a registered trademark of DecoPac.  
©2024 DecoPac  
Printed in the USA.

