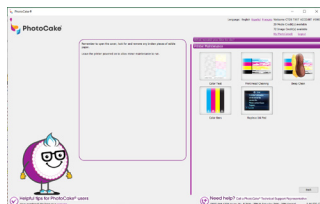




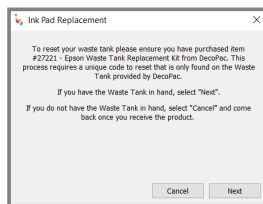
EPSON INK PAD REPLACEMENT KIT INSTALLATION INSTRUCTIONS

 VISIT DECOPAC.COM FOR PHOTOCAKE PRINTER MAINTENANCE VIDEOS

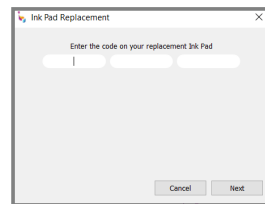
DIRECTIONS



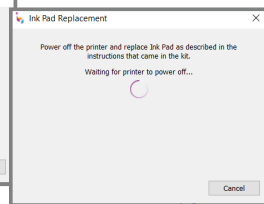
1. On the PhotoCake application Select "Printer Maintenance" then select "Replace Ink Pad"



2. A prompt up should come up asking if you have the ink pad, if you do hit next.



3. Once asked enter in the 12-digit Reset Code. Select 'Enter'. Once you do you will be instructed to replace the ink pad.



4. From the printer menu, navigate to "Setup"; select "Maintenance".

5. Select "Ink Cartridge Replacement" and remove ink cartridges.

6. Power off the printer. Disconnect Power and USB cables from printer.

7. Remove extended output tray. Push in Paper Feed and connected Output trays.

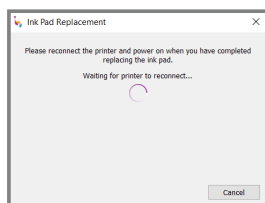
8. Set Printer display side down so rear of printer is facing up.

9. Using the #2 screwdriver (included in kit), remove screw and set aside.

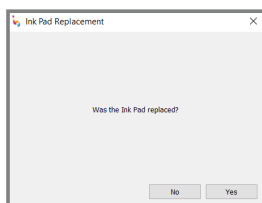
10. Slide Ink Pad tray to right and remove.

11. Install new Ink Padw, replace screw.

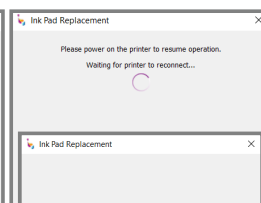
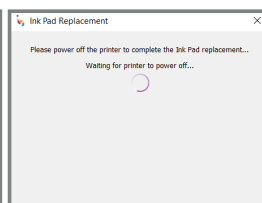
12. Set printer right side up, reconnect trays and cables.



13. Power printer on and install ink cartridges.



14. Select "yes" on the application prompt asking if you have replaced the ink pad. Follow the prompts to power the printer off and on.



NEED MORE HELP? 1-800-644-1228 | PhotoCakeTechTeam@DecoPac.com
Monday – Friday 7:00 AM to 7:00 PM CST | Saturday 7:00 AM – 2:00 PM

DECOPAC



3500 THURSTON AVENUE • ANOKA, MINNESOTA 55303
1-800-DECOPAC (1-800-332-6722)
ESPAÑOL: 1-800-898-3063 FAX: 763-502-0534
PHOTOCAKE® TECHNICAL ASSISTANCE: 1-800-644-1228