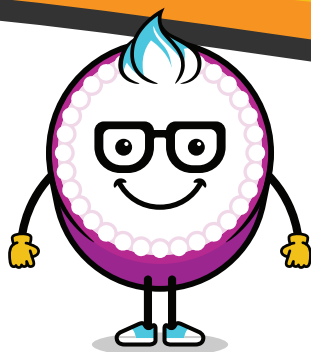


## PRINTER & SCANNER SET UP & INSTALLATION INSTRUCTIONS

 VISIT [DECOPAC.COM](http://DECOPAC.COM)  
FOR PHOTOCAKE  
PRINTER MAINTENANCE  
VIDEOS!



*Shown: Epson XP-4100 for example only.*

### CONTENTS

- Printer
- Power Cable
- USB Cable
- Removable Output Tray
- Sample Pack of Ink Cartridges

*\* Remove all clear plastic protective wrap, foam and blue tape from the Printer.*

### PRINTER SET UP








*Epson Model*



*Canon Model*



1. Unpack the Printer completely. Remove all tape and Styrofoam inserts.
2. Extend the Input Tray on the back of the Printer.
3. Adjust the gray paper feed guides to their furthest position.
4. Extend the Printer's Output Tray, then lift the tab up on the end of the extension. **Note: TS-702 does not have an extendable tab.**
5. Slide the removable Output Tray onto the Printer's Output Tray extension ensuring the extension tab slides through the slot on the removable tray.
6. Connect the Power Cable into the back of the Printer. **Note: It is key to plug into the surge protector.**
7. Press and hold the Power button for 3 seconds to power on the Printer.

	Epson XP-4100, WF-2850, WF-2830	Canon TS702	Epson XP-2100
<b>Step 1:</b> Installing Inks	<ul style="list-style-type: none"> <li>- Allow Printer to perform initial boot up</li> <li>- Select Preferred Language</li> <li>- Insert ink when screen prompts</li> </ul>  <p><b>Ensure removal of yellow pull tab!</b></p> <ul style="list-style-type: none"> <li>- Install ink tanks matching the colors to the indicated position of each of them in the carriage.</li> </ul> 	<ul style="list-style-type: none"> <li>- Allow Printer to perform initial boot up</li> <li>- Insert inks when screen prompts</li> </ul>  <p><b>Ensure removal of yellow tab and plastic guard!</b></p> <ul style="list-style-type: none"> <li>- Install ink tanks matching the colors to the indicated position of each of them in the carriage.</li> </ul> 	<ul style="list-style-type: none"> <li>- Allow Printer to perform initial boot up</li> <li>- Wait for an amber light on Printer</li> <li>- Insert inks</li> </ul>  <p><b>Ensure removal of yellow pull tab!</b></p> <ul style="list-style-type: none"> <li>- Install ink tanks matching the colors to the indicated position of each of them in the carriage.</li> </ul>
<b>Step 2:</b> Initializing Inks	<ul style="list-style-type: none"> <li>- Close Lid</li> <li>- Select option to continue on screen</li> <li>- Allow inks to charge (This process can take several minutes)</li> <li>- Home Screen will display when complete</li> </ul> 	<ul style="list-style-type: none"> <li>- Close lid</li> <li>- Press the "Start" button</li> <li>- Printer will check inks (This process can take several minutes)</li> <li>- Ink levels will display when complete</li> </ul> 	<ul style="list-style-type: none"> <li>- Close lid</li> <li>- Press "Cancel" button</li> <li>- Printer will charge inks (This process can take several minutes)</li> <li>- Power light will go solid green when complete</li> </ul>
<b>Step 3:</b> Connect Printer	Connect the Printer to the Controller using the provided USB cable.	Connect the Printer to the Controller using the provided USB cable.	Connect the Printer to the Controller using the provided USB cable.
<b>Step 4:</b> Perform Color Test	<ul style="list-style-type: none"> <li>- Insert a piece of paper into the rear paper feed tray</li> <li>- Perform a Print Head Cleaning via the PhotoCake system</li> </ul>	<ul style="list-style-type: none"> <li>- Insert a piece of paper into the bottom paper feed tray</li> <li>- Perform a Print Head Cleaning via the PhotoCake system</li> </ul>	<ul style="list-style-type: none"> <li>- Insert a piece of paper into the rear paper feed tray</li> <li>- Perform a Print Head Cleaning via the PhotoCake system</li> </ul>
<b>FINAL STEP</b>	<p>From the PhotoCake home screen select 'Maintenance' &gt; 'Print Head Cleaning'</p> <p><b>Note: It will take about 2 minutes for the Print Head Cleaning to complete and print the Color Test.</b> Your Color Test should match the example on the screen with no breaks. Please note, that sometimes you may be required to perform the print head cleaning more than once to obtain full color flow.</p>		

## CONGRATULATIONS!

Your Printer Set-Up is now complete!

**NEED  
MORE  
HELP?**

For additional assistance contact Technical Support  
at 1-800-644-1228  
Monday-Friday 7AM-7PM  
Saturday 7AM-2PM Central Time

**DECOPAC**



3500 THURSTON AVENUE • ANOKA, MINNESOTA 55303  
1-800-DECOPAC (1-800-332-6722)  
ESPAÑOL: 1-800-898-3063 FAX: 763-502-0534  
PHOTOCAKE® TECHNICAL ASSISTANCE: 1-800-644-1228

