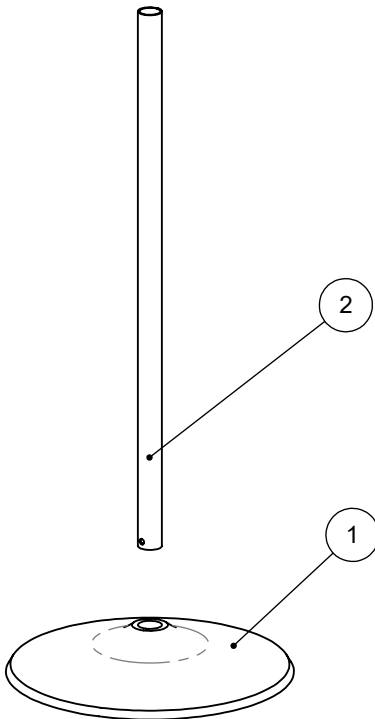
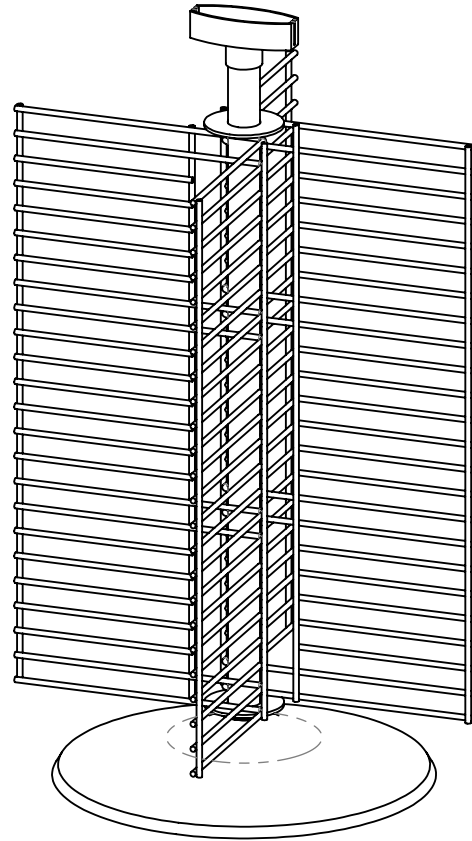
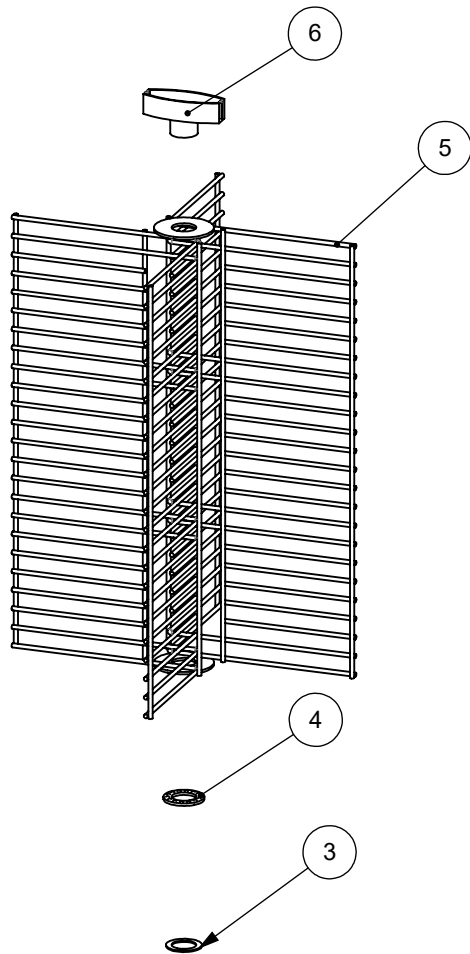


DECOPAC - 29222 CANDLE RACK BLACK COUNTER SPINNER



ASSEMBLY INSTRUCTIONS:

1. PLACE THE BASE (1) ON COUNTERTOP.
2. INSERT THE TUBE (2) INTO PLASTIC BASE, PRESS DOWN TO SECURE.
3. SLIDE THE WASHER (3) FIRST, FOLLOWED BY THE BEARING (4) DOWN THE TUBE UNTIL THEY REST ON THE BASE.
4. CAREFULLY SLIDE GRID UNIT (5) DOWN THE TUBE UNTIL IT SITS ON THE BEARING.
5. PRESS THE SIGN HOLDER (6) ONTO THE TOP OF THE TUBE.