

Project Profile:

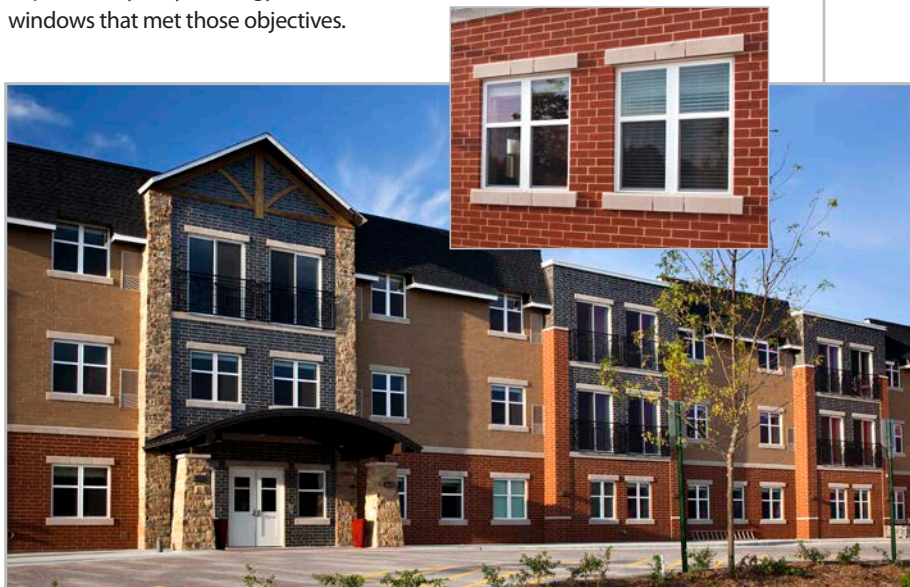
A VIEW OF THE GOOD LIFE

Westmont, Ill.



Aspired Living of Westmont is a retirement home designed to support its residence by fostering a stimulating comfortable and open-hearted environment.

When Hall Management sought a strong partner with quality, service, delivery and sales support offerings, they looked to Lindsay Windows and Deceuninck to provide stylish yet energy-efficient windows that met those objectives.



PROJECT-AT-A-GLANCE

- **Who:** Deceuninck Fabricator: Lindsay
Builder/Developer: Hall Management
- **What:** Installation of Earthwise single hung and picture windows in white at Aspired Living of Westmont
- **Why:** By using Earthwise single hung and picture windows, Aspired Living of Westmont took on the appearance of an open, welcoming and friendly retirement home that reflects the company's mission and creates a beautiful view for its residents.