

The Siemens logo is displayed in a bold, teal, sans-serif font. It is positioned in the upper left corner of the image, which shows a close-up of a high-voltage electrical substation with metal structures, insulators, and power lines.

**SIEMENS**

*Ingenuity for life*

# Station class hookstick disconnects

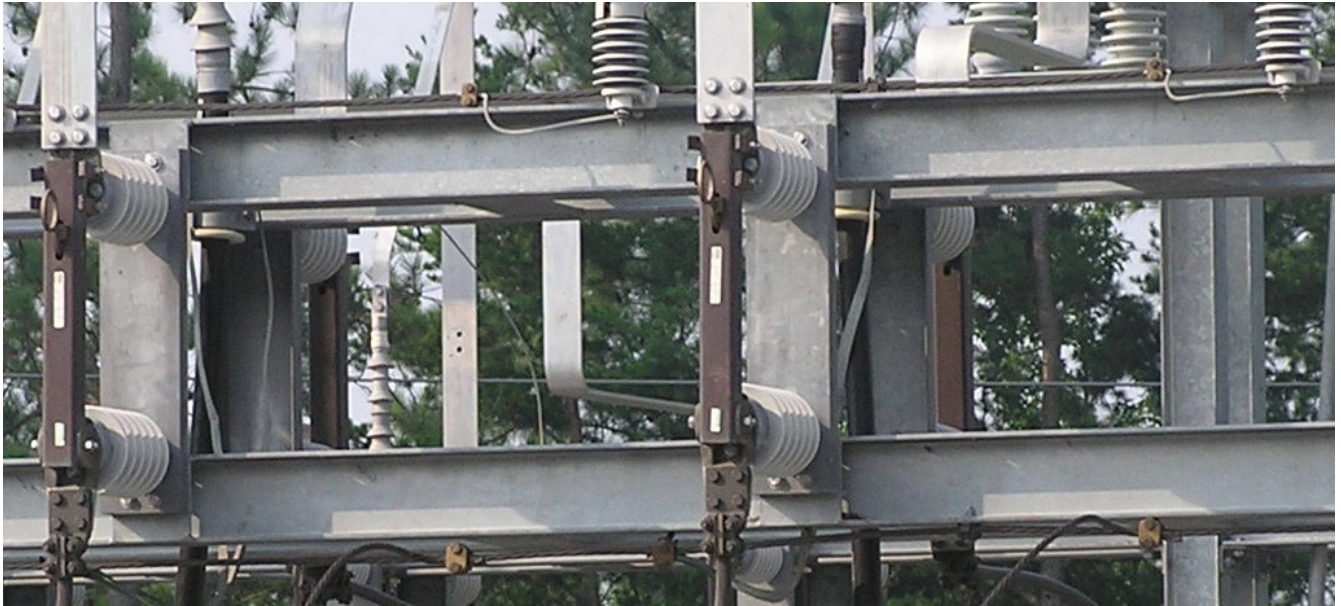
Types EH, EHL, EHTT, and V

[usa.siemens.com/disconnectswitches](https://usa.siemens.com/disconnectswitches)

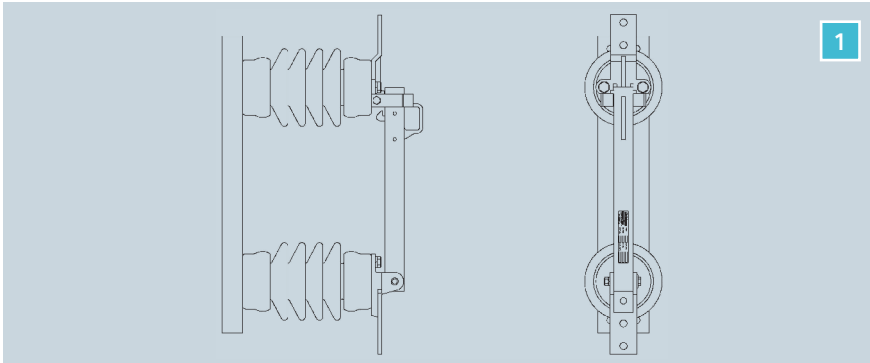


# Station class hookstick disconnects

Types EH, EHL, EHTT and V



# Overview

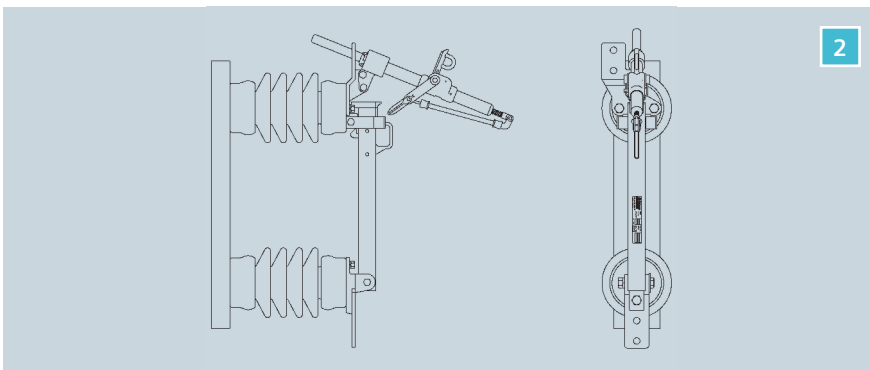


## 1. Type EH disconnect switch

### Station-class hookstick-operated switch

The type EH is a clean, simple and reliable power-class disconnect switch featuring:

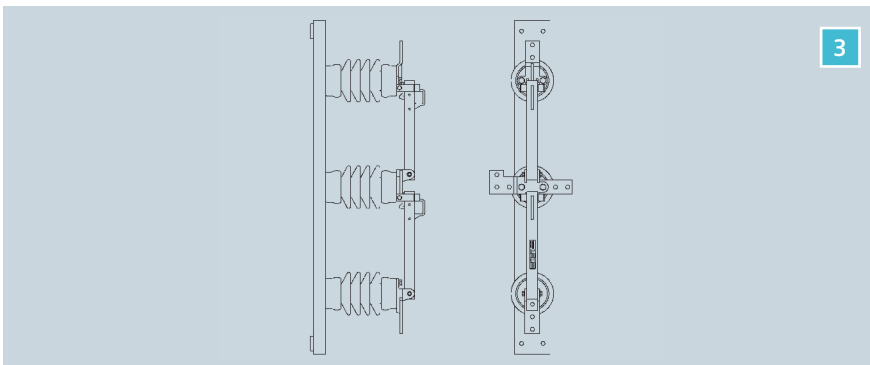
- Square tubular blade with a highly efficient section both for mechanical rigidity and electrical conductivity
- High-pressure coin silver jaw contacts
- Positive latch, effective pry-out mechanism
- Precision machined hinge and jaw castings for low resistance connection
- 90° blade stop
- NEMA 3" D.B.C. insulators
- Galvanized steel channel or formed universal base
- Standard or customized mounting options.



## 2. Type EHL disconnect switch

### Station-class hookstick interrupter switch

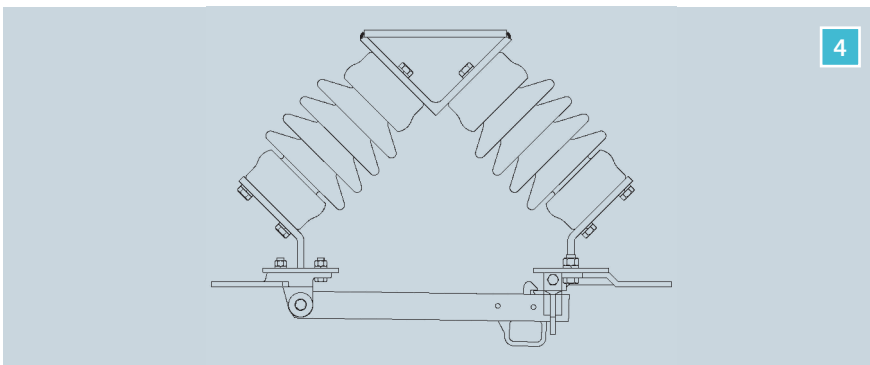
The type EHL carries all of the qualities of the type EH, as well as a Saf-T-Gap interrupter, a high-performance unit that is simple to install and remove with a standard shotgun stick.



## 3. Type EHTT disconnect switch

### Station-class tandem transfer switch

The type EHTT carries all of the qualities of the type EH set up in tandem transfer configuration.

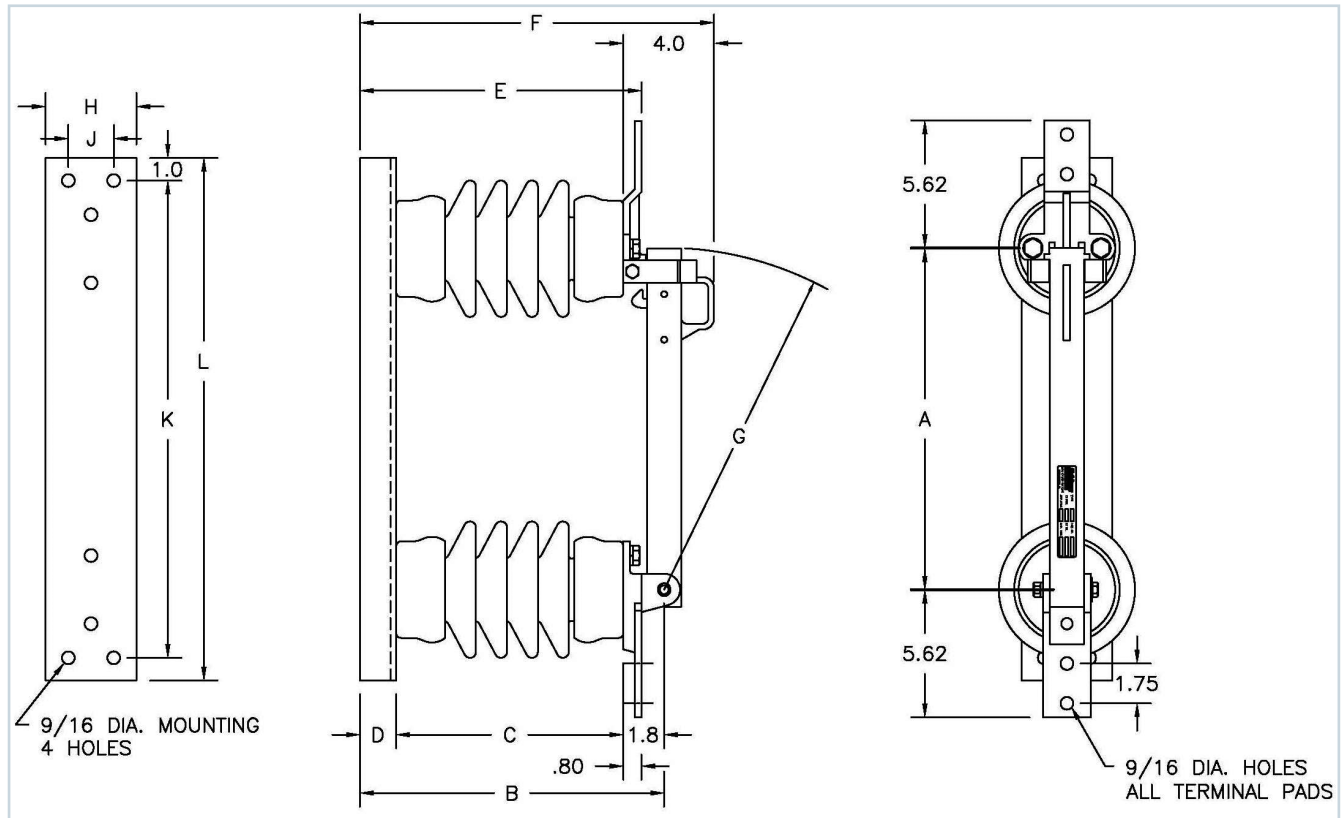


## 4. V-type configuration

The type EH and the type EHL are also available in a V-type configuration.

# Specifications

Type EH disconnect switch 3" D.B.C. 600 A



Catalog number	Rating data					Dimensions - inches											Net weight - pounds	
	Nom. kV	Max. kV	kV BIL	Cont. current amp	Mom. current amp	A	B	C	D	E	F	G	H	J	K	L	3" D.B.C. porcelain	3" D.B.C. polymer
640	14.4	15	110	600	40,000	15	13.4	10	1.6	12.4	15.6	15	4	2	21	23	54	32
740	23	25	150	600	40,000	18	17.4	14	1.6	16.4	19.6	18	4	2	24	26	63	39
840	34.5	38	200	600	40,000	24	21.55	18	1.6	20.55	23.8	24	5	2	30	32	87	47
HV940	46	48.3	250	600	65,000*	30	26.1	22	2.03	22.8	28.3	30	6	3	39	41	140	N/A
HV1040	69	72.5	350	600	65,000*	42	34.1	30	2.03	30.8	36.3	41.9	6	3	51	53	191	N/A

\*Peak withstand amp

Note: Add suffixes below to catalog numbers for the option described:

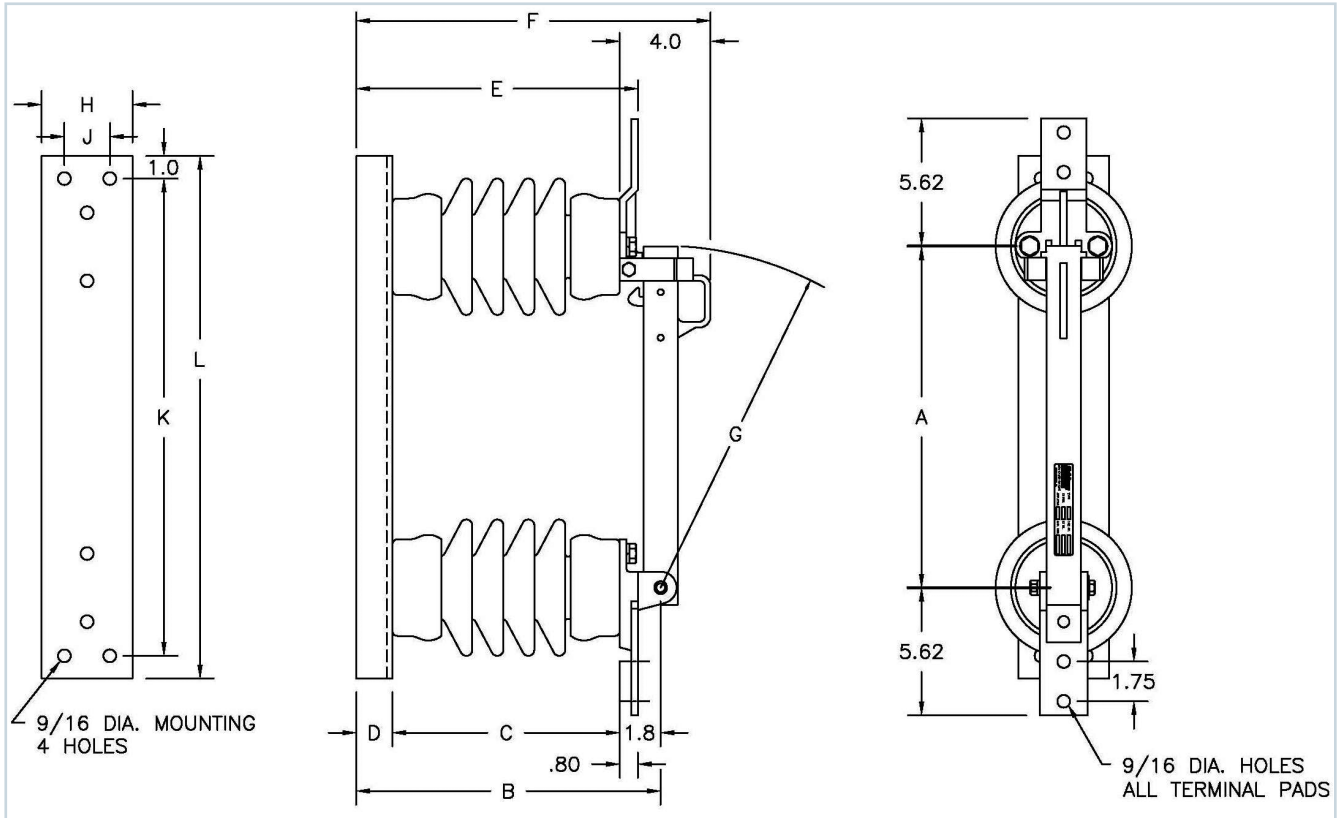
- C = Polymer insulator
- H = Loadbreak hooks
- K = Cable connector
- #6 - 397.5 MCM ACSR
- #6 - 500 MCM copper
- P = Pole mount bracket
- QB = Quick break
- T = Tinned terminal pads
- X = Backplate set

Example:

"640CT = Type EH, 15 kV, 600 A, with 3" D.B.C. polymer insulators and tinned terminal pads"

# Specifications

Type EH disconnect switch 3" D.B.C. 900 A



Catalog number	Rating data					Dimensions - inches											Net weight - pounds	
	Nom. kV	Max. kV	kV BIL	Cont. current amp	Mom. current amp	A	B	C	D	E	F	G	H	J	K	L	3" D.B.C. porcelain	3" D.B.C. polymer
650	14.4	15	110	900	40,000	15	13.4	10	1.6	12.4	15.6	15	4	2	21	23	55	33
750	23	25	150	900	40,000	18	17.4	14	1.6	16.4	19.6	18	4	2	24	26	64	40
850	34.5	38	200	900	40,000	24	21.55	18	1.6	20.55	23.8	24	5	2	30	32	88	48
HV950	46	48.3	250	900	65,000*	30	26.1	22	2.03	22.8	28.3	30	6	3	39	41	143	N/A
HV1050	69	72.5	350	900	65,000*	42	34.1	30	2.03	30.8	36.3	41.9	6	3	51	53	196	N/A

\*Peak withstand amp

Note: Add suffixes below to catalog numbers for the option described:

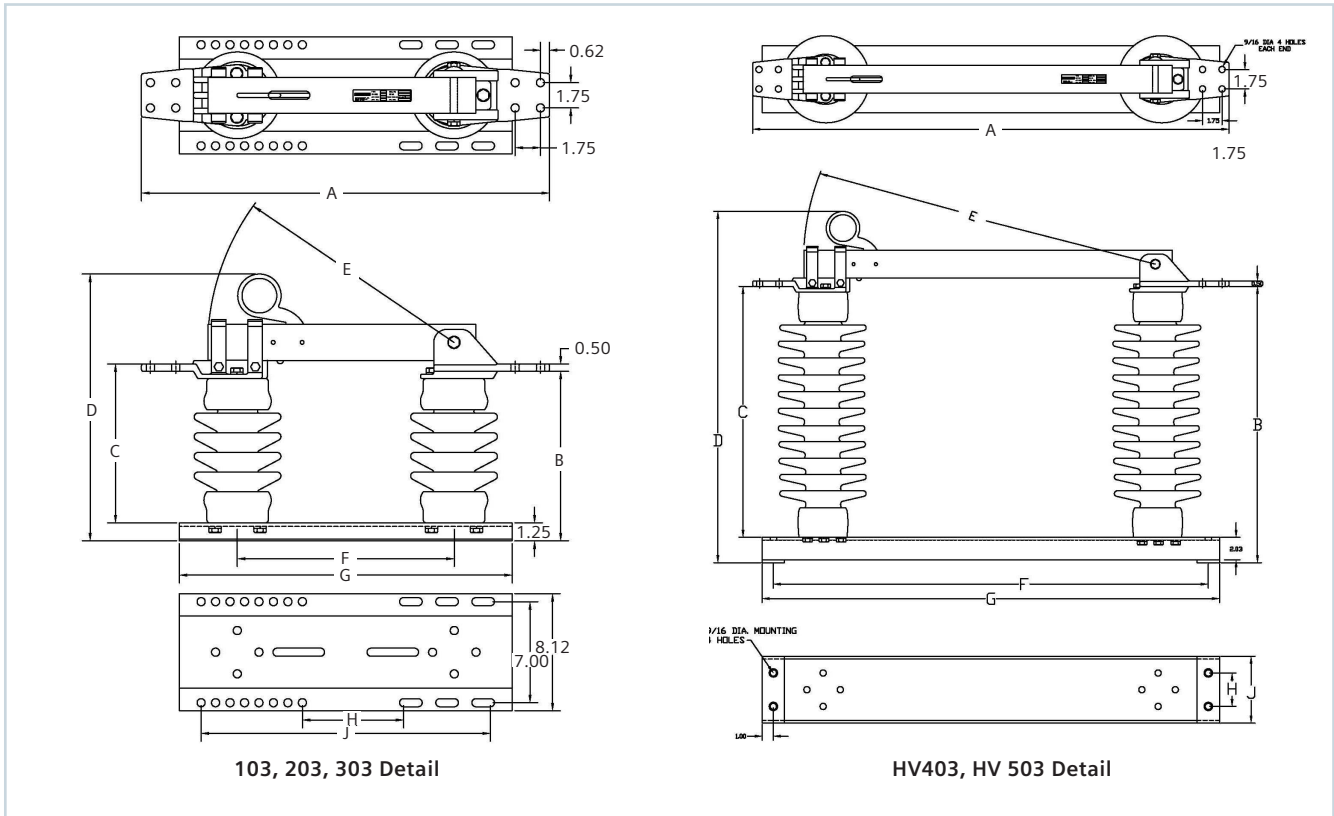
- C = Polymer insulator
- H = Loadbreak hooks
- K = Cable connector
- #6 - 397.5 MCM ACSR
- #6 - 500 MCM copper
- P = Pole mount bracket
- QB = Quick break
- T = Tinned terminal pads
- X = Backplate set

Example:

"750CT = Type EH, 25 kV, 900 A, with 3" D.B.C. polymer insulators and tinned terminal pads"

# Specifications

Type EH disconnect switch 3" D.B.C. 1,200 A



Catalog number	Rating data					Dimensions - inches									Net weight - pounds	
	Nom. kV	Max. kV	kV BIL	Cont. current amp	Peak withstand amp	A	B	C	D	E	F	G	H	J	3" D.B.C. porcelain	3" D.B.C. polymer
103	14.4	15	110	1,200	99,000	28.2	11.75	11	18.48	17	15	23	7	20	57	43
203	23	25	150	1,200	99,000	31.18	15.75	14.5	22.48	20.03	18	24	6	21	76	58
303	34.5	38	200	1,200	99,000	37.14	19.75	18.49	26.47	26	24	30	12	27	100	80
HV403	46	48.3	250	1,200	99,000	42.7	24.78	22.5	31.5	32	39	41	3	6	148	N/A
HV503	69	72.5	350	1,200	99,000	55.2	32.79	30.5	39.51	43.5	51	53	4	6	196	N/A

Note: Add suffixes below to catalog numbers for the option described:

- C = Polymer insulator
- P = Pole mount bracket
- QB = Quick break
- X = Backplate set

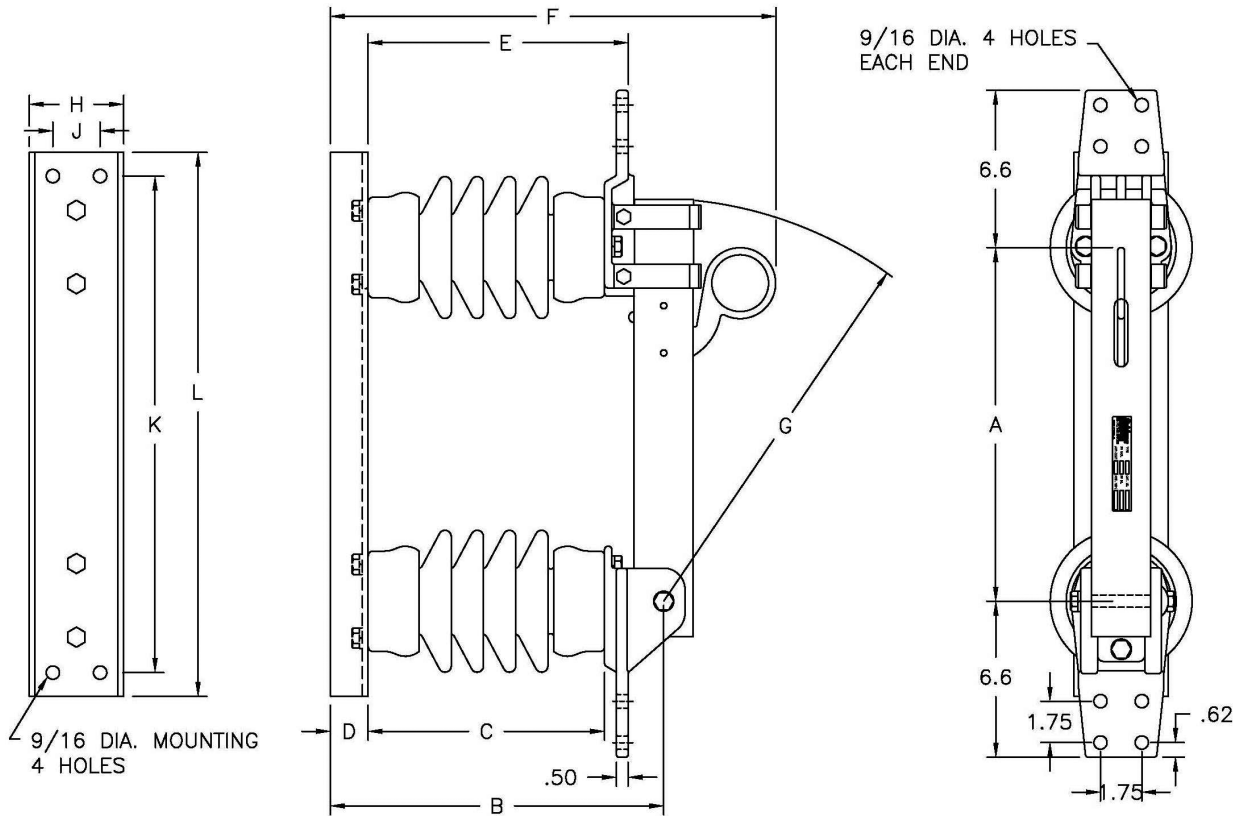
Example:

"203C = Type EH, 25 kV, 1,200 A with 3" D.B.C. polymer insulators and tinned terminal pads"



# Specifications

Type EH disconnect switch 3" D.B.C. 1,200 A



Cat. no.	Rating data					Dimensions - inches											Net weight - pounds	
	Nom. kV	Max. kV	kV BIL	Cont. current amp	Mom. current amp	A	B	C	D	E	F	G	H	J	K	L	3" D.B.C. porcelain	3" D.B.C. polymer
660	14.4	15	110	1,200	61,000	15	14.1	10	1.6	11	18.85	17	4	2	21	23	64	49
760	23	25	150	1,200	61,000	18	18.42	14	1.92	15	23.17	20	5	2	24	26	83	58
860	34.5	38	200	1,200	61,000	24	22.42	18	1.92	19	27.2	26	6	2	30	32	105	65

Note: Add suffixes below to catalog numbers for the option described:

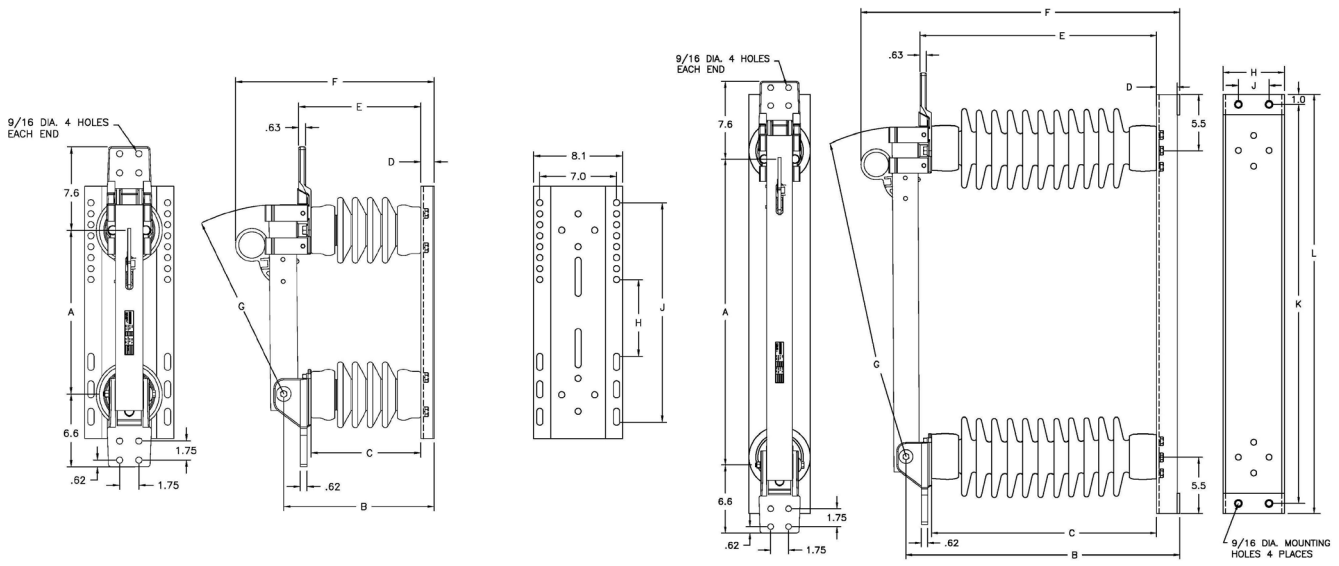
- C = Polymer insulator
- P = Pole mount bracket
- QB = Quick break
- T = Tinned terminal pads
- X = Backplate set

Example:

"860CT = Type EH, 38 kV, 1,200 A with 3" D.B.C. polymer insulators and tinned terminal pads"

# Specifications

Type EH disconnect switch 3" D.B.C. 2,000 A



620, 720, 820 Detail

HV920, HV1020 Detail

Catalog number	Rating data					Dimensions - inches											Net weight - pounds	
	Nom. kV	Max. kV	kV BIL	Cont. current amp	Peak withstand amp	A	B	C	D	E	F	G	H	J	K	L	3" D.B.C. porcelain	3" D.B.C. polymer
620	14.4	15	110	2,000	114,000	14.9	13.7	10	1.2	11.1	18.1	17.3	7	20			73	58
720	23	25	150	2,000	114,000	17.9	17.7	14	1.2	15.1	22.1	20.3	6	21			86	61
820	34.5	38	200	2,000	114,000	23.9	21.7	18	1.2	19.1	26.1	26.3	12	27			104	64
HV920	46	48.3	250	2,000	114,000	29.9	26.8	22	2.03	23.1	21.2	32.3	6	3	39	41	163	N/A
HV1020	69	72.5	350	2,000	114,000	41.9	34.8	30	2.03	31.1	39.2	44.3	6	4	51	53	226	N/A

Note: Add suffixes below to catalog numbers for the option described:

- C = Polymer insulator
- P = Pole mount bracket
- QB = Quick break
- X = Backplate set

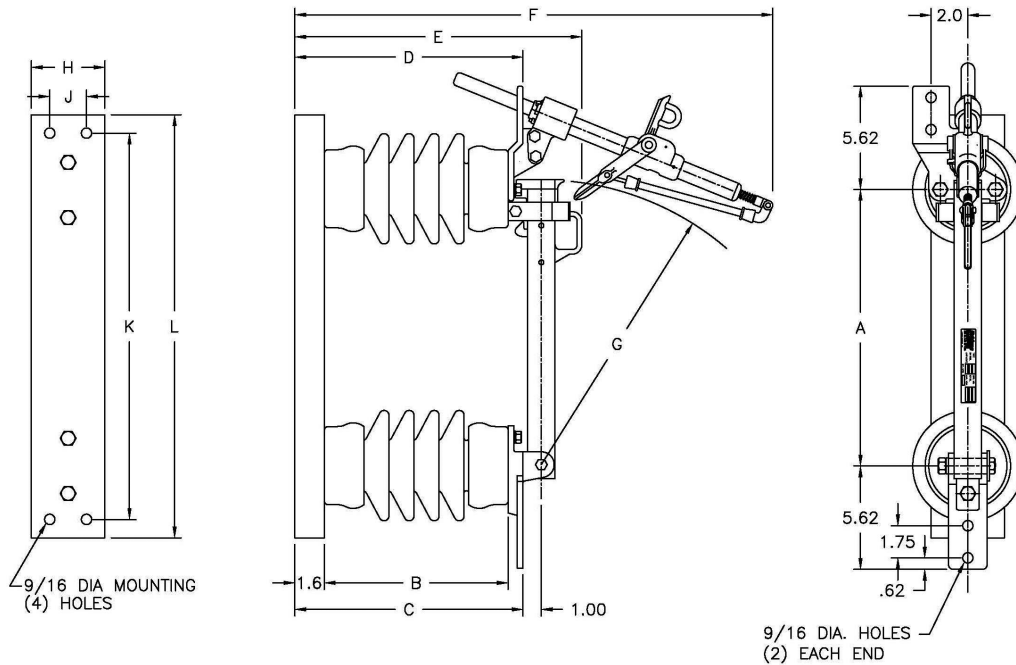
Example:

"620C = Type EH, 15 kV, 2,000 A with 3" D.B.C. polymer insulators and tinned terminal pads"



# Specifications

Type EH disconnect switch 3" D.B.C. 600 A



Cat. no.	Rating data					Dimensions - inches											Net weight - pounds	
	Nom. kV	Max. kV	kV BIL	Cont. current amp	Mom. current amp	A	B	C	D	E	F	G	H	J	K	L	3" D.B.C. porcelain	3" D.B.C. polymer
645	14.4	15	110	600	40,000	15	10	12.4	12.4	15.6	26	15.5	4	2	21	23	59	44
745	23	25	150	600	40,000	18	14	16.4	16.4	19.6	30	18.5	4	2	24	26	68	44
845	34.5	38	200	600	40,000	24	18	20.4	20.4	23.6	34	24.5	5	2	30	32	92	52

Note: Add suffixes below to catalog numbers for the option described:

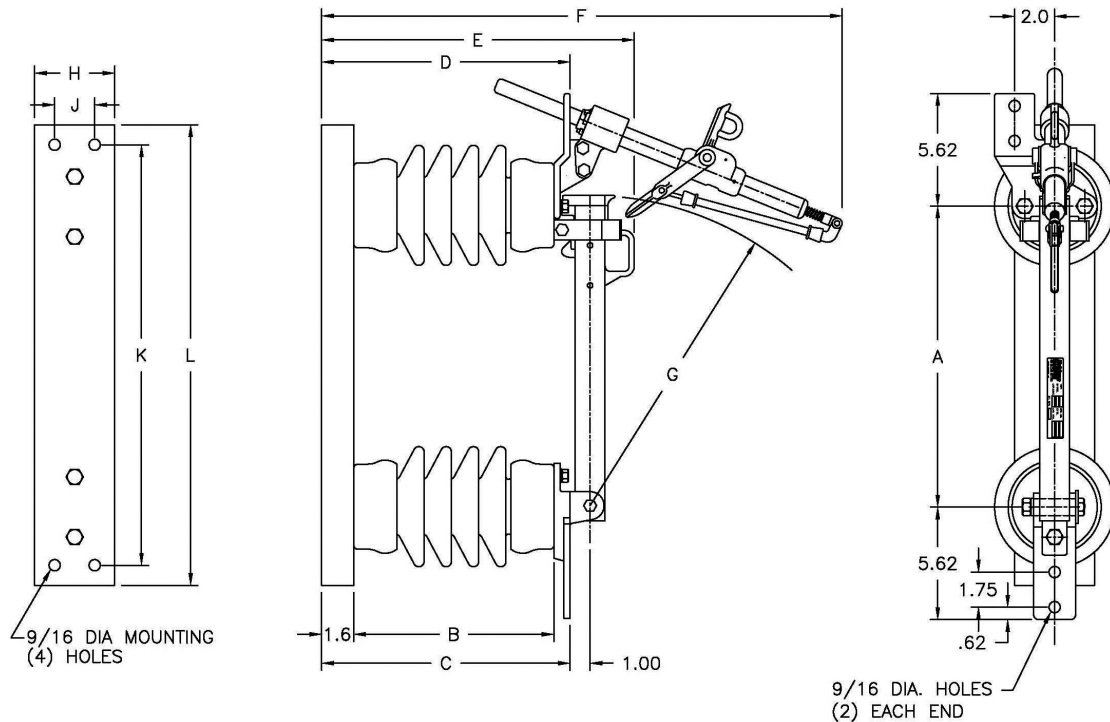
- C = Polymer insulator
- K = Cable connector
- #6 - 397.5 MCM ACSR
- #6 - 500 MCM copper
- P = Pole mount bracket
- T = Tinned terminal pads
- X = Backplate set

Example:

"645CT = Type EHL, 15 kV, 600 A with 3" D.B.C. polymer insulators and tinned terminal pads"

# Specifications

Type EHL disconnect switch 3" D.B.C. 900 A



Cat. no.	Rating data					Dimensions - inches											Net weight - pounds	
	Nom. kV	Max. kV	kV BIL	Cont. current amp	Mom. current amp	A	B	C	D	E	F	G	H	J	K	L	3" D.B.C. porcelain	3" D.B.C. polymer
655	14.4	15	110	900	40,000	15	10	12.4	12.4	15.6	26	15.5	4	2	21	23	60	45
755	23	25	150	900	40,000	18	14	16.4	16.4	19.6	30	18.5	4	2	24	26	69	45
855	34.5	38	200	900	40,000	24	18	20.4	20.4	23.6	34	24.5	5	2	30	32	93	53

Note: Add suffixes below to catalog numbers for the option described:

C = Polymer insulator

K = Cable connector

#6 - 397.5 MCM ACSR

#6 - 500 MCM copper

P = Pole mount bracket

T = Tinned terminal pads

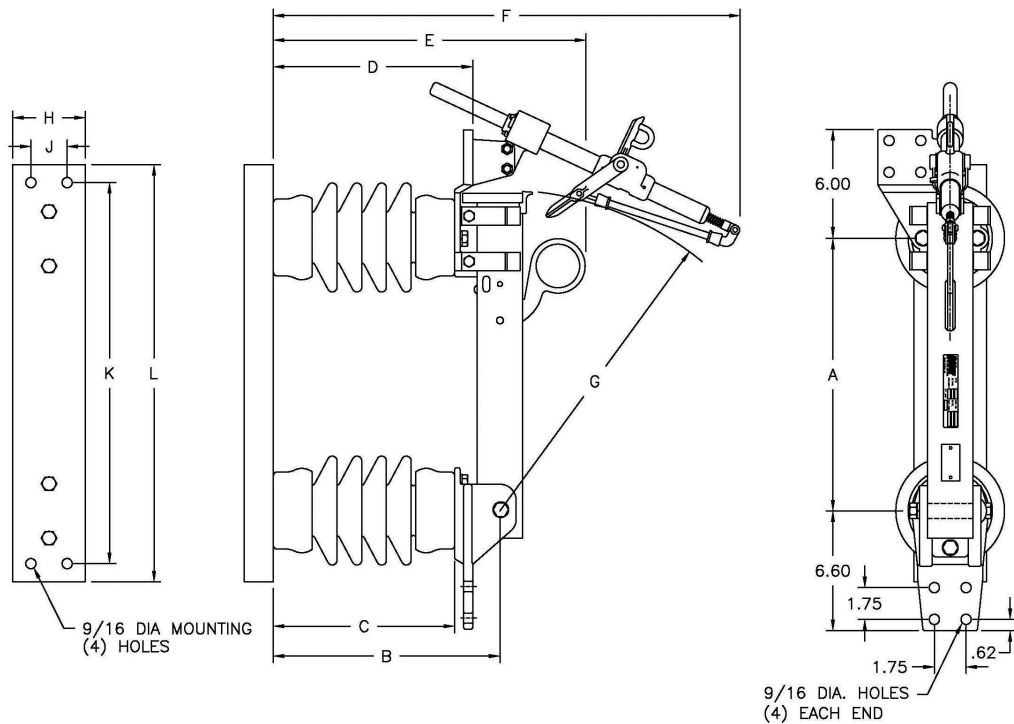
X = Backplate set

Example:

"755CT = Type EHL, 25 kV, 900 A with 3" D.B.C. polymer insulators and tinned terminal pads"

# Specifications

Type EHL disconnect switch 3" D.B.C. 1,200 A



Cat. no.	Rating data					Dimensions - inches											Net weight - pounds	
	Nom. kV	Max. kV	kV BIL	Cont. current amp	Mom. current amp	A	B	C	D	E	F	G	H	J	K	L	3" D.B.C. porcelain	3" D.B.C. polymer
665	14.4	15	110	1,200	61,000	15	12.5	10	11	17.25	25.75	17.7	4	2	21	23	69	54
765	23	25	150	1,200	61,000	18	16.5	14	15	21.25	29.75	20.7	5	2	24	26	88	63
865	34.5	38	200	1,200	61,000	24	20.5	18	19	25.25	33.75	26.7	5	2	30	32	110	70

Note: Add suffixes below to catalog numbers for the option described:

- C = Polymer insulator
- P = Pole mount bracket
- T = Tinned terminal pads
- X = Backplate set

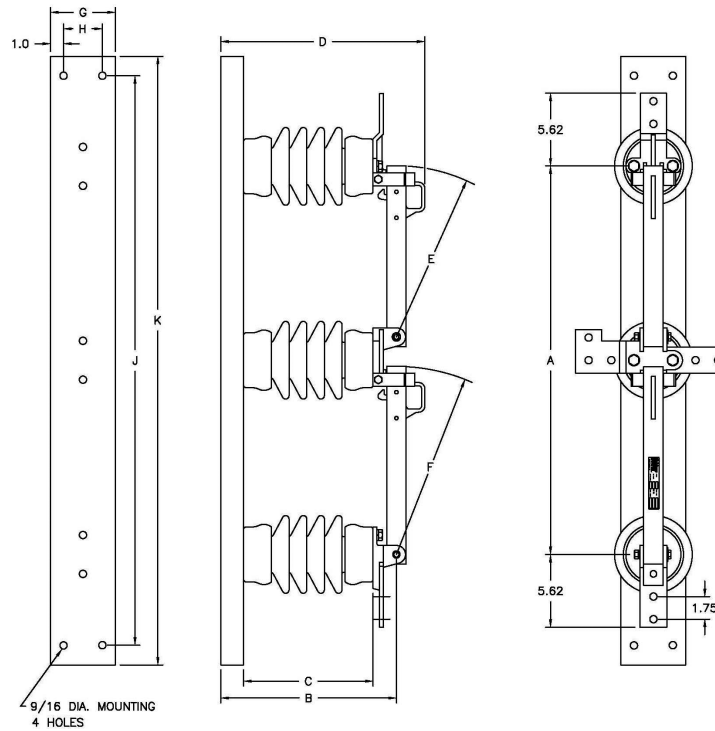
Example:

"865CT = Type EHL, 38 kV, 1,200 A with 3" D.B.C. polymer insulators and tinned terminal pads"



# Specifications

Type EHTT disconnect switch 3" D.B.C. 600 A



Cat. no.	Rating data					Dimensions - inches											Net weight - pounds	
	Nom. kV	Max. kV	kV BIL	Cont. current amp	Mom. current amp	A	B	C	D	E	F	G	H	J	K	3" D.B.C. porcelain	3" D.B.C. polymer	
643	14.4	15	110	600	40,000	30	13.6	10	15.7	13.2	14.5	5	3	44	47	88	66	
743	23	25	150	600	40,000	36	17.6	14	19.7	16.2	17.5	5	3	50	53	105	68	
843	34.5	38	200	600	40,000	48	21.6	18	23.7	22.2	23.5	5	3	62	65	139	79	

Note: Add suffixes below to catalog numbers for the option described:

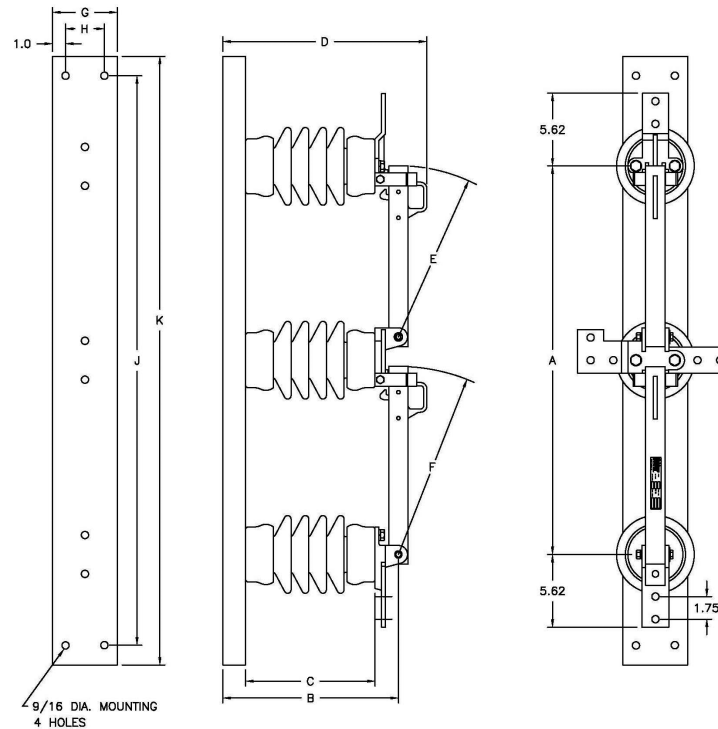
- C = Polymer insulator
- H = Loadbreak hooks
- K = Cable connector
- #6 - 397.5 MCM ACSR
- #6 - 500 MCM copper
- P = Pole mount bracket
- T = Tinned terminal pads
- X = Backplate set

Example:

"643CT = Type EHTT, 15 kV, 600 A with 3" D.B.C. polymer insulators and tinned terminal pads"

# Specifications

Type EHTT disconnect switch 3" D.B.C. 900 A



Cat. no.	Rating data					Dimensions - inches										Net weight - pounds	
	Nom. kV	Max. kV	kV BIL	Cont. current amp	Mom. current amp	A	B	C	D	E	F	G	H	J	K	3" D.B.C. porcelain	3" D.B.C. polymer
653	14.4	15	110	900	40,000	30	13.6	10	15.7	13.2	14.5	5	3	44	47	90	68
753	23	25	150	900	40,000	36	17.6	14	19.7	16.2	17.5	5	3	50	53	107	70
853	34.5	38	200	900	40,000	48	21.6	18	23.7	22.2	23.5	5	3	62	65	141	81

Note: Add suffixes below to catalog numbers for the option described:

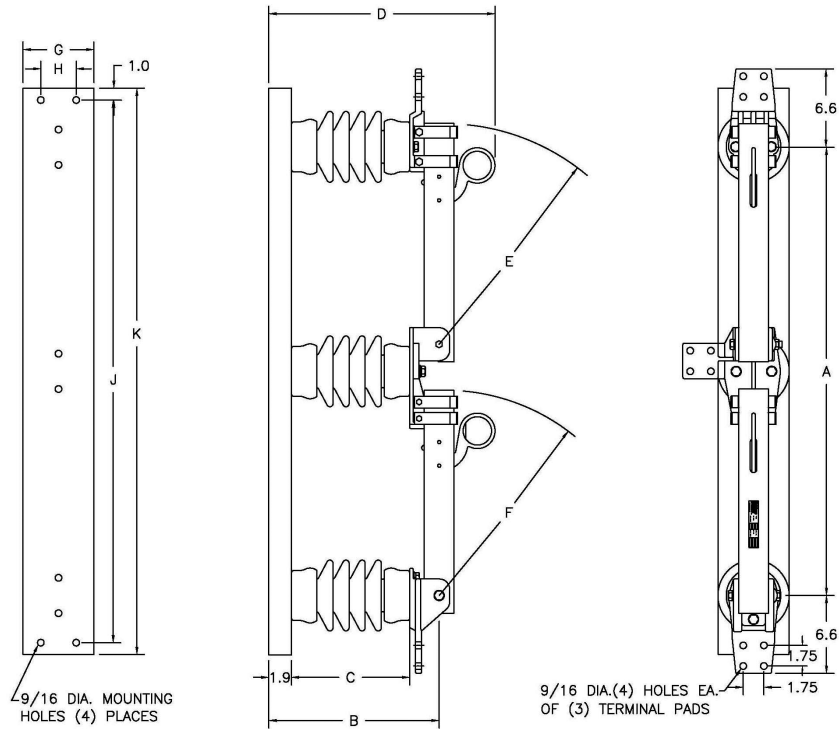
- C = Polymer insulator
- H = Loadbreak hooks
- K = Cable connector
- #6 - 397.5 MCM ACSR
- #6 - 500 MCM copper
- P = Pole mount bracket
- T = Tinned terminal pads
- X = Backplate set

Example:

"753CT = Type EHTT, 25 kV, 900 A with 3" D.B.C. polymer insulators and tinned terminal pads"

# Specifications

Type EHTT disconnect switch 3" D.B.C. 1,200 A



Cat. no.	Rating data					Dimensions - inches											Net weight - pounds	
	Nom. kV	Max. kV	kV BIL	Cont. current amp	Mom. current amp	A	B	C	D	E	F	G	H	J	K	3" D.B.C. porcelain	3" D.B.C. polymer	
662	14.4	15	110	1,200	61,000	38	14.4	10	19.1	18.7	17.4	6	3	46	48	121	99	
762	23	25	150	1,200	61,000	44	18.4	14	23.6	21.7	20.5	6	3	52	54	142	105	
862	34.5	38	200	1,200	61,000	56	22.4	18	27.6	27.7	26.5	6	3	60	62	170	110	

Note: Add suffixes below to catalog numbers for the option described:

- C = Polymer insulator
- P = Pole mount bracket
- T = Tinned terminal pads
- X = Backplate set

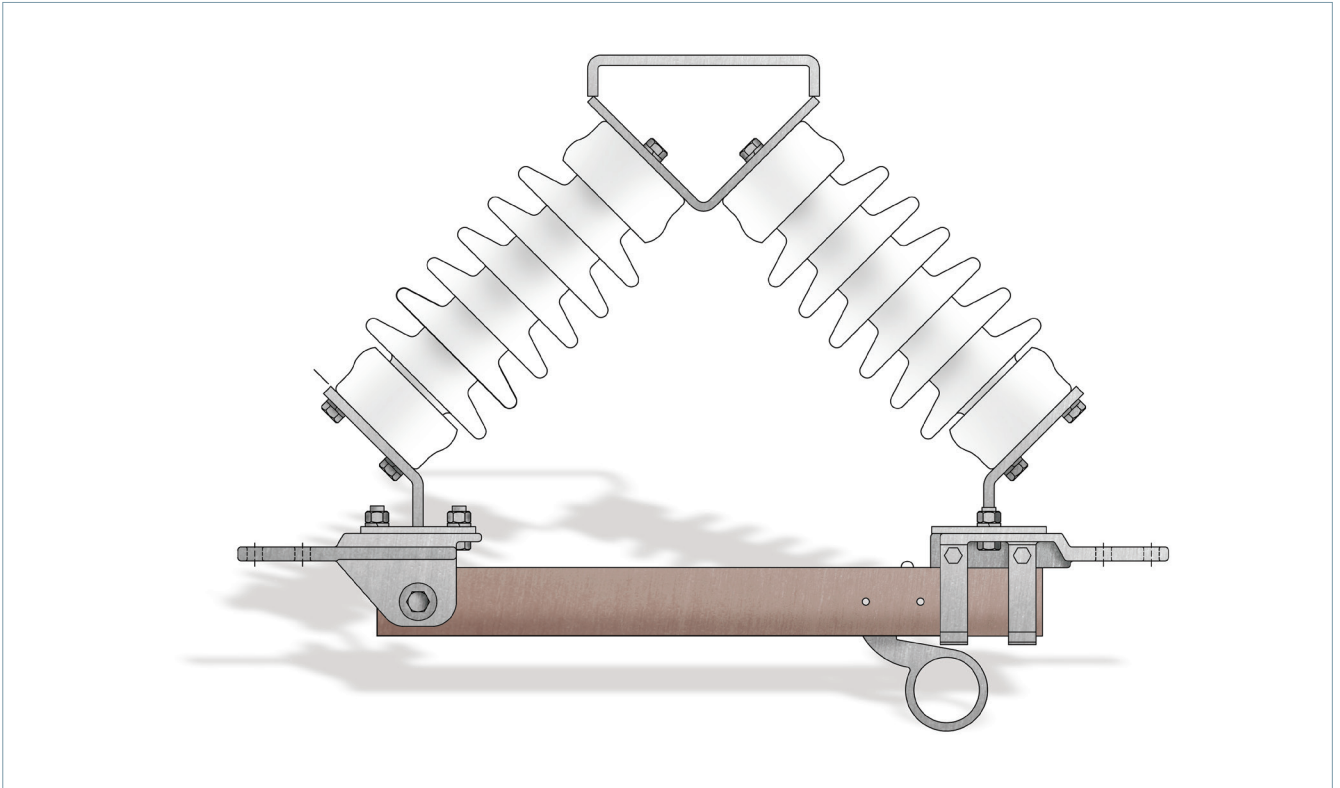
Example:

"662CT = Type EHTT, 15 kV, 1,200 A with 3" D.B.C. polymer insulators and tinned terminal pads"



# V-type configuration

For the types EH and EHL  
disconnect switches



The type EH and the type EHL are also available in a V-type configuration.

Siemens Industry, Inc.  
99 Bolton Sullivan Drive  
Heber Springs, Arkansas 72543

For more information, including service or parts,  
please contact our Customer Support Center.  
Phone: +1 (800) 333-7421

[usa.siemens.com/disconnectswitches](http://usa.siemens.com/disconnectswitches)

Order No.: E50001-F630-A164-01-76US

Printed in U.S.A.

© 2019 Siemens Industry, Inc.

The technical data presented in this document is based on an actual case or on as designed parameters, and therefore should not be relied upon for any specific application and does not constitute a performance guarantee for any projects. Actual results are dependent on variable conditions. Accordingly, Siemens does not make representations, warranties, or assurances as to the accuracy, currency or completeness of the content contained herein. If requested, we will provide specific technical data or specifications with respect to any customer's particular applications. Our company is constantly involved in engineering and development. For that reason, we reserve the right to modify, at any time, the technology and product specifications contained herein.