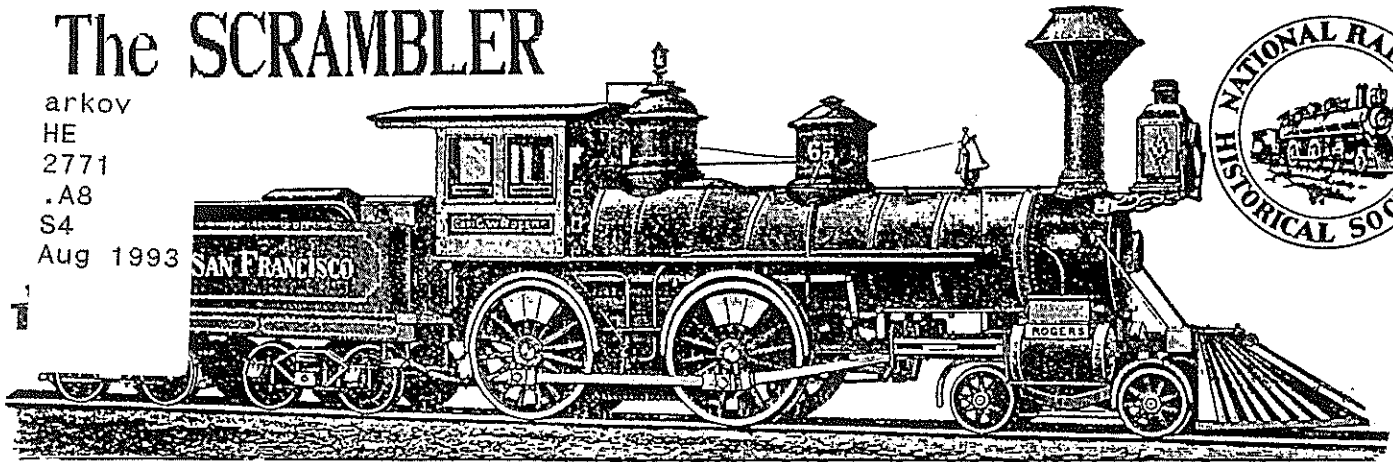


# The SCRAMBLER

arkov  
HE  
2771  
.A8  
S4  
Aug 1993



ARKANSAS BOSTON MOUNTAINS CHAPTER, NATIONAL RAILWAY HISTORICAL SOCIETY  
VOLUME 6, NUMBER 12 AUGUST, 1993

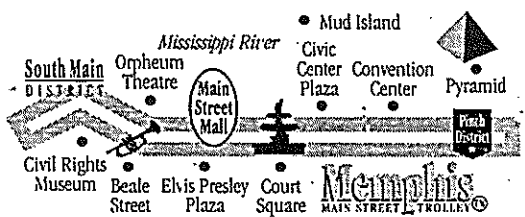
## MINUTES OF THE LAST MEETING:

The July 15, 1993 meeting was whistled to order by President George Alison shortly after 7 PM in the General Store building on the Shiloh Museum grounds. Minutes of the June meeting were approved as published in THE SCRAMBLER. Bill Ussery presented the membership application of Larry and Marilyn Cain. Welcome! Several visitors told of their interest in railroads and trolleys. \*\*\* Plans were finalized for the August meeting to be held at noon SATURDAY AUGUST 14 at Wyatt's Cafeteria in JOPLIN. We need a good turnout. \*\*\* Don Kincy spoke of upcoming programs: September--Juanita Toler, October--Charles Bickford, tentatively. \*\*\* Treasurer Bill Ussery presented a financial report which is filed with the secretary. \*\*\* Ray Toler gave a report on restoration of the combine which was built in 1899. \*\*\* Call Sean Reed at 631-9691 to volunteer work on the steam driven air pumps at Rogers. \*\*\* Call Ed Tolle at 253-6290 in Eureka Springs if you have suggestions for the Christmas dinner meeting. \*\*\* The meeting adjourned to enjoy an excellent slide program by Dick Keegan on trolleys and light rail. Ray Toler for Ron Allen, Secretary

## MEMPHIS TROLLEY IS OFF AND RUNNING



Amid a good bit of fanfare the long promised trolley line is in operation on Main Street. The \$33 million project is supposed to increase tourism by making it easier for visitors to reach points of interest along its route which starts, on the north end, at Main and Mill Streets. Its southern end is Calhoun Street at Central Station. Rolling stock consists of three cars built in Portugal between 1927 and 1940. They were in a dilapidated condition requiring extensive repair here to put them in usable shape. They are a colorful group bound to add a little



sparkle to a part of town that needs it. Fares are 50 cents during most hours with a special 25 cent tab for the lunch time riders. All day and monthly tickets are also available. Rides on the first day of operation were free, April 29. Besides being a tourist attraction, officials hope that the trolley will bring people of the city downtown again to help revive the area.

Of the \$33 million total cost, \$25.4 came out of federal taxpayers' pockets, \$2.3 million each from state and city funds and the remainder from private contributions. City officials are talking about expanding rail service to the medical center and suburbs. Included in the request for more federal largess is funding for Central Station rehabilitation, presumably to be completed in the 1994-95 fiscal year.

[based on articles in The Commercial Appeal]



Associated Press

TROLLEY RIDE — Scott McHenry (left) and Taylor Treadwell join other first-day riders Thursday on Memphis' new downtown trolley. The \$33 million trolley line runs 2.5 miles through the city's business district.

## German 'maglev' train runs 270 mph

The Associated Press

BONN, Germany — Germany's experimental magnetic levitation train has set a speed record of 270 mph, researchers said Friday.

The run Thursday at Emsland broke the record of 261 mph set on the same track several years ago.

from: Arkansas Democrat-Gazette

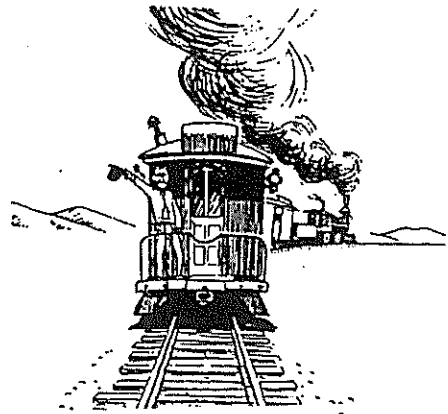
The record for a train on rails is 309 mph by a French train in 1990.

The "maglev" trains glides above its rail on a magnetic field.

Japan is also developing a maglev train, and U.S. lawmakers are considering a \$300 million development program.



# THE PRESIDENT'S OBSERVATION



What a show, "A Desire to Name a Streetcar", put on by our very own Dick Keegan. If you missed the July meeting then you missed a first rate slide program on trolleys and streetcars. Thanks for a nostalgic look at a mode of transportation that is beginning to be reconsidered as a viable means of transportation in some cities.

We also thank the guests that came to the meeting to enjoy Dick's program.

Thanks to Ray Toler for filling in for Ron Allen who must still be sidetracked.

I spoke to soon on Bill's work on wrapping up the tax situation, but I believe he has got it well in hand, excepting that we're still dealing with the Little Rock people.

If you don't know by now you're not reading the scrambler, our August meeting is in Joplin, August 14. If you need details give somebody a call from the back page.

We welcome our new members Larry and Marilyn Cain.

A special note of thanks to Jeff Lewis, Erv's son, for helping get our August meeting arranged.

See you in Joplin.

Your President George Alison

Next meeting: October 21, 1993  
Speaker: Chas. Bickford, photog.  
Topic: Rail Shots and More

-0-

Charles Bickford has been for some years staff photographer for The Morning News of Springdale. In that position he has taken many photos of railroads in general and the Arkansas & Missouri in particular. His last direct contact with our chapter, as such, was on Tuesday, June 12, 1990, when he was the only print news representative (KHOG-TV was the only broadcast medium covering) at the presentation of a Certificate of Appreciation to the Bank of Fayetteville for the establishing of its train-car branch at the northwest corner of the intersection of Dickson Street and West Avenue. The certificate was handed, on the rear platform of the bank's observation car, to John Lewis, president of the bank, by Martin Post, then president of the chapter, and Robert C. Oswald, the chapter's national director. The certificate is on permanent display just inside the doorway of the car, which serves as the branch bank's lobby. The bank's main offices are on the city square. Later, Bickford presented seven color photos of that occasion to John Lewis and to Erv Lewis (no relation) and to Martin Post.

-0-

Re our chapter meeting...

It is Bickford's intention to show a limited number of his photos and to answer questions as to the demands made of news photographers under varying circumstances. From many years of working alongside, or competing with, news still-shot photogs and TV cameramen (and least they were men at that time) Erv Lewis as an unusual appreciation of civilian and wartime lensmen. Bickford would do well to confer in advance with certain members of the society as to equipment available in the little General Store of the Shiloh Museum, where the chapter meetings are held.

He could phone: Chapter President, George Alison, Jr., 751-4891; Vice President Don Kincy, 770-0018; National Director Robert C. Oswald, 521-9714; Chapter Director Ray Toler, 751-7810; Chapter Director Robert Lundeen, 756-3710.

###

*Note from Erv Lewis*

Tue. July 6, '93

Hi - Bill,

Thanks for the check- I was beginning to wonder about the books- Bob Oswald came after another two dozen a couple or so weeks ago. Hope sales do pick up; I have not yet paid for the last five hundred copies printed this spring; we'll sell them eventually.

I am beginning to wonder whether it might be better to put out a totally different book next season. I'll talk to Lloyd Seal, the man who prints the books. The pictures on this last edition are darker - in fact too dark. I don't know whether these plates have been used too much - or what - but the pictures are too dark.

I'd like to get to a meeting - to see and chat with all you folk - but I have not been out much this winter. Hope to get at least to the adult club in Springdale soon with this warmer weather. Thanks again for the check.

When the air is just right I can hear the train whistle all the way through Fayetteville. I like the sound; we are most fortunate to have this tourist line through here.

Best -

*Bob*

LETTER FROM BOB WINN

NORTHWEST ARKANSAS MORNING NEWS  
WEDNESDAY, JUNE 9, 1993

# "Images of History" Project Nears Completion

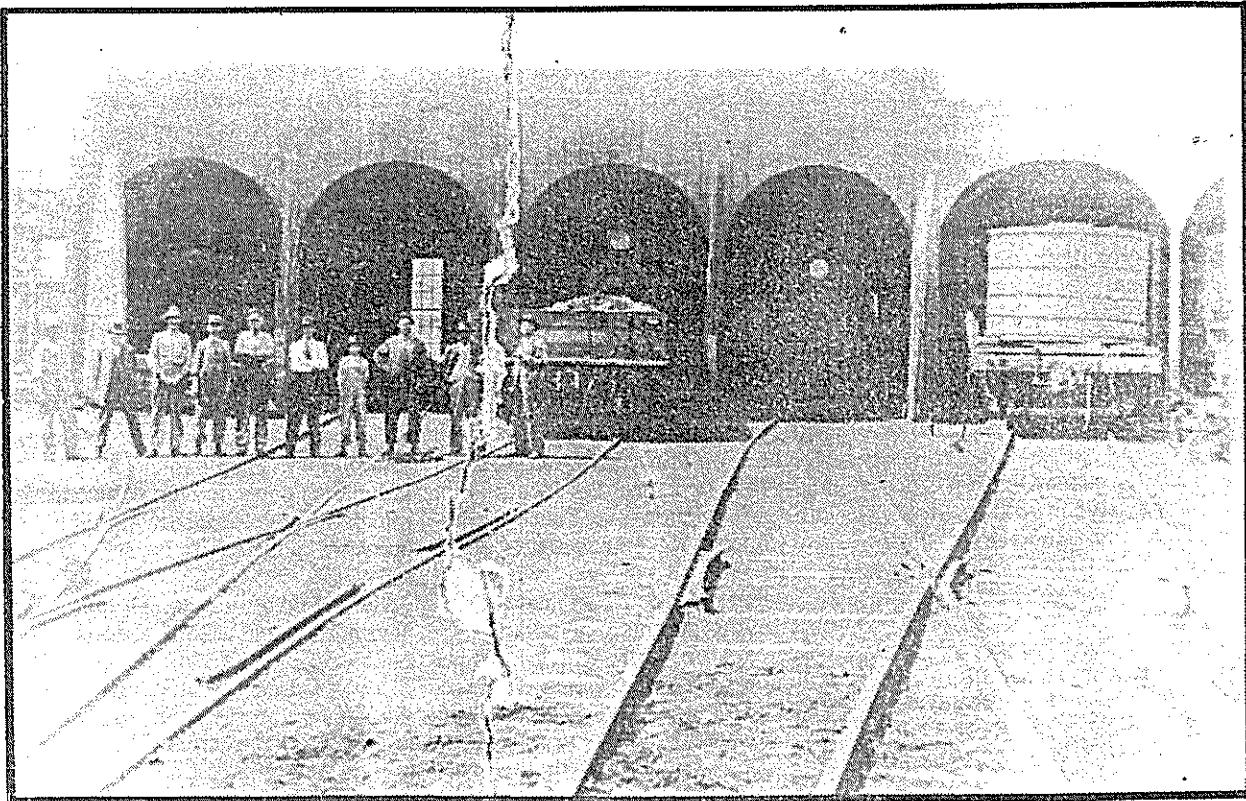


Photo submitted

**Frisco roundhouse:** This is one of many images being made available to the public through the Museum's project. This is the Frisco roundhouse which once sat west of the tracks in the 700 block of South Second Street. Harve Cowan, master mechanic, is fifth from the left. The roundhouse was torn down in the mid-1930s and the bricks were used to build law offices for Duty and Duty law firm. Their building on South Second Street, designed by A.O. Clarke, was expanded in later years, and today is the site of the Friendly Book Store. **ROGERS HISTORICAL MUSEUM PROJECT**

By DEBORAH ROBINSON

Times Staff Writer

SPRINGDALE — The Orphan Train Heritage Society will be able to locate its research center in Springdale thanks to action taken Tuesday night by the Springdale Planning Commission.

Mary Ellen Johnson, director of the organization, appeared before the commission for the second time in two months to ask for a waiver of subdivision requirements for property she and her husband, Leroy, own south of West Oaklawn. Johnson said last month she had buyers for two parcels of the property and she wanted to donate a third parcel to the Orphan Train Heritage Society as the site for its future research center and memorial park.

City Engineer Rick Cowdrey explained that city ordinance categorizes such lot splits as a subdivision and requires a subdivi-

sion plat to be filed with the planning commission. Other requirements call for street improvements and for utilities to be made available to each lot. Deputy City Attorney Micki Harrington estimated that the Johnsons' share for the paving of a road fronting the property at \$26,000.

The Johnsons' request to waive subdivision requirements was tabled last month until they could consult with the buyer of the property to see if she would be willing to pay for a portion of the street widening. They told the commission they could not afford to pay the entire cost of the widening.

Johnson said Tuesday night she has lost a buyer for one of the parcels, but would still like to sell the second property, which has an old house on it. She said if she could split off and sell the lot with the house on it, she would be able to go ahead and donate the parcel of land to the Orphan Train Soci-

ety. Johnson said she has talked with Fayetteville Mayor Fred Hanna about helping her locate a suitable site for the orphan train center in that city, in the event that she could not deed the organization her property. Johnson said she would prefer to have the Orphan Train center in her hometown, but she was resigned to the fact that it might not be possible.

Commissioner David Powell suggested that what Johnson needed was a tandem lot split. Although the tandem lot split was significantly different from the request that had been advertised and placed on the commission's agenda, the commission agreed to go ahead and consider the tandem lot split because it involved the Orphan Train Society. The tandem lot split was approved, as was the conveyance of title from the Johnsons to the organization. "It's only because of the Orphan Train that we are doing what we are

doing," Powell stressed. "This is a very isolated situation."

The commission also voted to defer the requirement for the Johnsons to pay for street improvements until other lots are sold. At that time, Harrington said, the requirement would "kick in" and they would be required to come up with the money for improvements.

Johnson tearfully thanked the commission for its action. Johnson will have to come before the Springdale City Council July 13 for final approval.

The Orphan Train Heritage Society focuses on the men and women who, as children, were adopted by families across the country in the early part of this century.

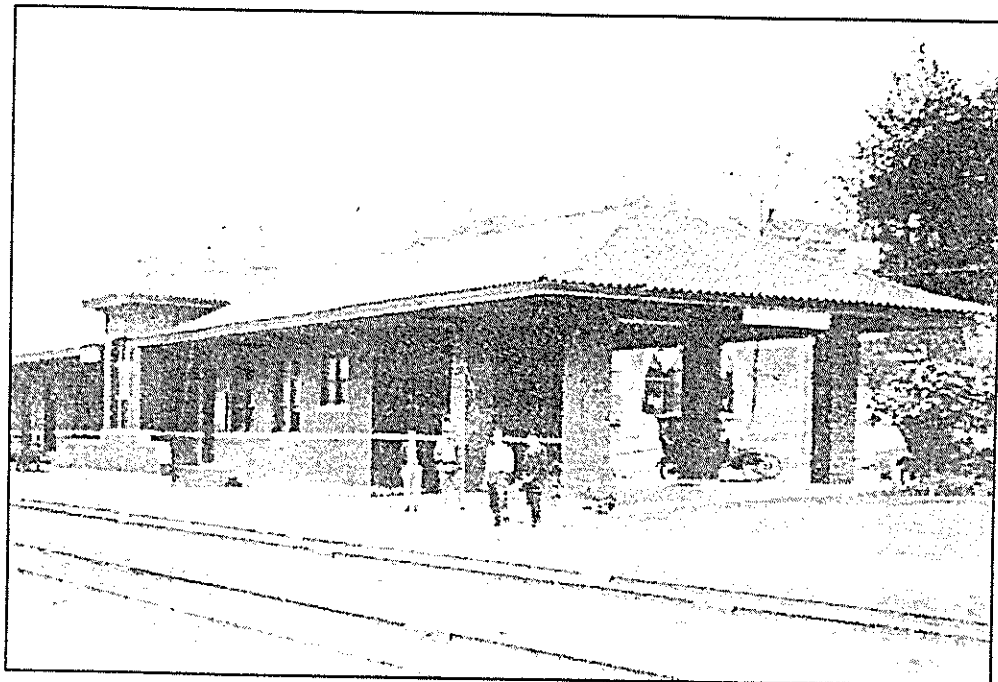
"Orphan trains" typically journeyed from town to town across the Midwest, finding homes for wayward children from the Northeast.

# Planners approve Orphan Train Heritage Society relocation

Thursday, July 8, 1993

From Northwest Arkansas Times

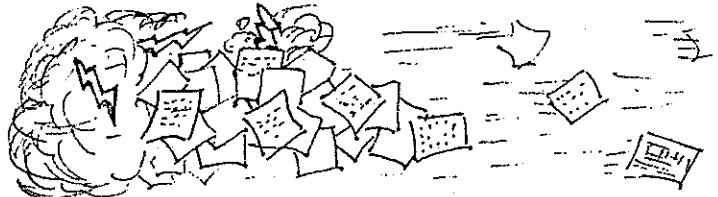
MALVERN, 1928  
— Four men stand in front of the railroad depot in the Hot Spring County community. Note the baggage cart at the far end of the building and the automobile parked on the other side. The depot, which was typical of its era, is still used today by Amtrak.



# SEPTEMBER 1993

Sunday	Monday	Tuesday	Wednesday	Thursday	Friday	Saturday
			1 First through train from Philadelphia to Pittsburgh on Pennsylvania R.R. (1848).	2	3	4
5-	6 Train robber Jesse James born at Kearny MO (1847).  LABOR DAY	7 James gang robbed Chicago & Alton train at Blue Cut, MO (1881).	8	9	10	11
12	13	14	15 Elephant "Jumbo" killed in wreck of Grand Trunk circus train at St. Thomas, Ont. (1885). No human fatalities.	16  ABMT 7:00 PM	17	18 William Jackson Palmer born at Kent County, DE (1836). Builder of Denver & Rio Grande Ry.
19	20 Holland Ry. opened: Amsterdam to Haarlem (1839).	21	22	23	24	25
26 Sidney & Paramatta Ry (New South Wales, Australia) opened (1855).	27	28	29 Passenger train collision at Montgomery West Pakistan, left 250 dead (1957).	30		

**TRIVIA CORNER**  
 No sketch this month!  
 The first version of the calendar got blown away in a storm of paperwork. Servo-RCO



**ABMT BULLETIN BOARD**

Next meeting: SEPT 16<sup>TH</sup>  
 Speaker: Juanita Toler  
 Topic: "Mixed Train Express"

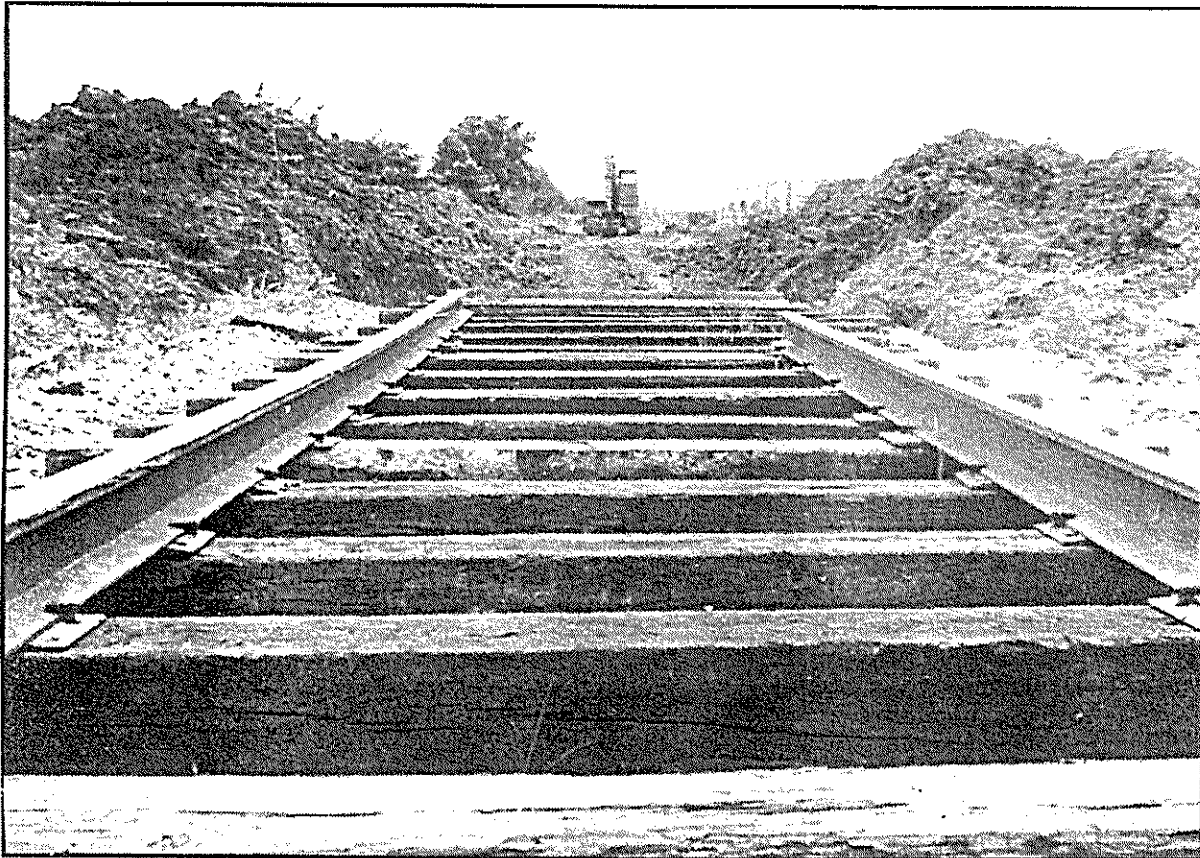
ARKANSAS BOSTON MOUNTAINS CHAPTER, NATIONAL RAILWAY HISTORICAL SOCIETY: OFFICERS

---

PRESIDENT: GEORGE ALISON, JR. 2061 NO. 56th ST. SPRINGDALE, AR 72764	751-4891
VICE PRESIDENT: DON KINCY P. O. BOX 456 Lowell, AR 72745	770-0018
SECRETARY: RON ALLEN 2405 BACKUS SPRINGDALE, AR 72764	751-0761
TREASURER: BILL USSERY 112 WILLELLA PL. SPRINGDALE, AR 72764	751-2873
NAT'L. DIRECTOR: BOB OSWALD 2511 ELIZABETH AV. FAYETTEVILLE, AR 72703	521-9714
DIRECTOR: RAY TOLER P.O. BOX 6005 SPRINGDALE, AR 72766	751-7810
DIRECTOR: ROBERT LUNDEEN 1008 W. MAPLE SPRINGDALE, AR 72764	756-3710
DIRECTOR/EDITOR: DICK KEEGAN 5 CAISTER LN. BELLA VISTA, AR 72714	855-2077

---

# Making tracks:



Daily Record photograph by Jackle Hosey

The Arkansas-Missouri Railroad is rehabilitating three miles of railroad track near Bentonville, allowing more rail shipments to local industries.

"We are rehabilitating three miles of track, replacing ties and tamping the track to get it regulated," said Jim Brooks, vice president of marketing for the Arkansas-Missouri Railroad. "That part of Bentonville is a hot area right now, and we expect it to grow."

Brooks said for the last three years the railroad stopped at First Brands in Rogers.

MEETINGS: . . . Third Thursday each month. . . except December, annual dinner meeting.  
 PLACE: . . . Shiloh Museum's General Store Building, Springdale, AR. Time 7:00 p.m.  
 VISITORS WELCOME AT ALL MEETINGS.

DUES: ABMT Chapter-\$13.00, National NRHS-\$13.00 or \$26.00 annually, family \$28.00.

ARKANSAS BOSTON MOUNTAINS CHAPTER  
 NATIONAL RAILWAY Historical Society  
 THE SCRAMBLER  
 5 Caister Ln. Bella Vista, AR 72714

University of Arkansas  
 Libraries, Fayetteville  
 ARK COLL-OV  
 Received on: 01-23-04  
 The Scrambler