

ARKANSAS-BOSTON MOUNTAINS CHAPTER

NATIONAL RAILWAY HISTORICAL SOCIETY

Chapter No. 188 founded in 1987



2010 DIRECTORY OF OFFICERS

President	Bob Stark
Vice President	David McDonald
Secretary	Malcolm Cleaveland
Treasurer	Bill Longston
Program Director	David McDonald
National Director	Chuck Girard
Board Director	Larry Cain
Editor	Bill Merrifield

Our website address is www.arkrailfan.com

NRHS Chapter meets at 7:00 PM, April 21, 2011 at the Shiloh Museum Store.

Ron Allen will present a program on the Connecticut Trolley Museum

ARKANSAS-BOSTON MOUNTAINS CHAPTER
NATIONAL RAILWAY HISTORICAL SOCIETY
P.O. BOX 1303
SPRINGDALE, AR 72765-1303
Address Service Requested

The Scrambler

Volume 24, No. 7

April, 2011

Monthly Newsletter of the
Arkansas-Boston Mountains Chapter, National Railway Historical Society

CHAPTER MINUTES

Minutes: Meeting of the Arkansas- Boston Mtn. Chapter of the National Railway Historical Society at the Shiloh Museum

March 17, 2011

Meeting was called to order at 7:00PM. 24 members and two guests were present.

The Treasurer reported that the money market account has \$12695.52. Checking account has \$382.67 and \$144 was expended since our last meeting. The Train Show was successful; we took in \$182.50 and still need to mail out 3 maps.

Bill Merrifield *Scrambler* editor reported electronic dissemination working well. He made 48 paper copies, the absolute minimum. The *Scrambler* will be posted electronically in the next day or two. Bill suffered a computer failure that slowed things down.

NEW BUSINESS

A show, Tired Iron of the Ozarks, April 15-17. Directions 412 to Siloam Springs, N. on Mt. Olive past the big Baptist Church, you will see signs.

There are several train shows coming up. 33rd Annual Ozark Model RR Spring Show and Swap Meet, Springfield Catholic High School, 2340 S. Eastgate Ave., Springfield, MO 65809. 9-3.

Meeting adjourned for the presentation, "Ozark and Cherokee Central, the Frisco Muskogee Branch" presented by Mike Condren. <http://condrenrails.com/Frisco/O&CC-Ry.html>

Malcolm K. Cleaveland, Secretary

LOCALLY ON THE BEAM



A herd of cattle got loose near Washburn, MO as Al Kaepfel and Tom Duggan were checking out photo shoot locations for the Rare Mileage Mixed Train event on June 25/26, 2011. This little doggie was soon reunited with its owner thanks to the courtesy of our A & M driver.



Rare Mileage Mixed Train Weekend

June 25 & 26, 2011

Rare Mileage Mixed Train Excursion

The Arkansas-Boston Mountain Chapter, NRHS, will host a unique mixed train ride traveling north from Springdale, Arkansas. This is the first ever mixed train to operate on the Arkansas & Missouri Railroad north of Springdale, Arkansas. The last Frisco Railroad passenger train ran on this track in September, 1965.

Saturday, June 25, 2011

10:30 am – 12:00 pm
1:00 pm – 5:00 pm

A&M ALCO Locomotive Shop Tours
Registration in the Kansas City Room at the Jones Center for Families, 922 East Emma Avenue, Springdale, AR

12:00 pm – 2:00 pm
2:00 pm – 5:00 pm

Lunch (at your expense)
Northwest Arkansas Rail history /A & M programs in the Kansas City Room at the Jones Center

6:00 pm – 7:00 pm
7:00 pm – 8:00 pm

Dinner at the Depot (included)
Excursion train consist photo shoot at the Springdale Depot

Sunday, 26, 2011

7:30 am -
8:00 am – 4 pm

Registration at the Depot, 306 E. Emma
85 mile roundtrip mixed train trip to Butterfield, Missouri.
Trip includes three photo opportunities and box lunch on train.

Equipment

Engine- ALCO Diesel engine
Coach – restored 1920's vintage cars / includes A/C
First Class– 1955 ex-Long Island RR Parlor Car / includes A/C
Caboose – (ex Reserve Mining No. 19) / no air conditioning
Freight- Gondola, box car and spine car (subject to availability)

Hotel Accommodations:

Holiday Inn & Convention Center, 1500 So. 48th Street., Springdale, AR is offering a special daily rate of \$77.80 (including all taxes and the hot buffet breakfast). Call the Holiday Inn at 479-751-8300 for hotel reservations. These rooms are limited and available on "first come - first served" basis. Please mention the Mixed Train Excursion to obtain the special rate.

Questions: Call 479-927-3163 or contact dachinghwa@gmail.com.

See reverse for pricing and ticket purchase information

Reservation Form

Event Prices, per person (same prices per child), are as follows:
 Coach-restored 1920s vintage cars with AC and operable windows- \$80.00
 First-Newly renovated 1955 ex-Long Island RR Parlor Car with AC- \$100.00 (Capacity-40)
 Caboose-Non-air conditioned (ex Reserve Mining No. 19)- \$120.00 (Capacity-10)
 Please complete this form and return with check, payable to "ABMT", to

Quad Chapter Event
PO Box 1303
Springdale, AR 72765-1303

Name _____

Address _____

City/State/ZIP _____

Telephone No. _____ E-mail Address _____

<u>Saturday (No.)</u>	<u>Sunday (No.)</u>		
_____ x \$25.00	Coach _____	x \$80.00	\$ _____
_____ x \$25.00	Parlor _____	x \$100.00	\$ _____
_____ x \$25.00	Caboose _____	x 120.00	\$ _____
Grand Total \$			_____

(Please make check payable to "ABMT")

	Yes	No
Will you accept First if Caboose is sold out ?	—	—
Will you accept Coach if First is sold out ?	—	—

Reservations received after June 1, 2011 will be subject to a \$20.00 surcharge per order. No refunds given after June 15.

Legal Disclaimer – The Arkansas –Boston Mountains Chapter ("Chapter"), National Railway Historical Society is acting merely as agent in arranging this event. By participating in this event you agree to hold the Chapter, its officers and members harmless from any claims for damage or injury relating to this event. Please note that the Arkansas & Missouri Railroad Company reserves the right to substitute equipment, change the schedule or make other changes as warranted by circumstances.

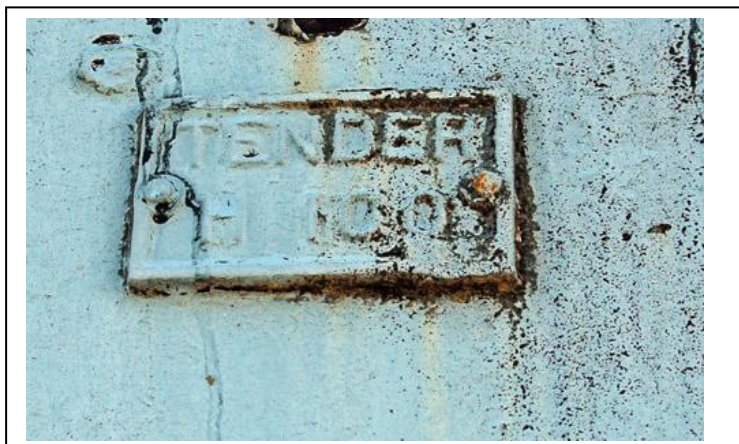
Qef-01-4/11 Rev.

Springdale has a tender place for Tenders

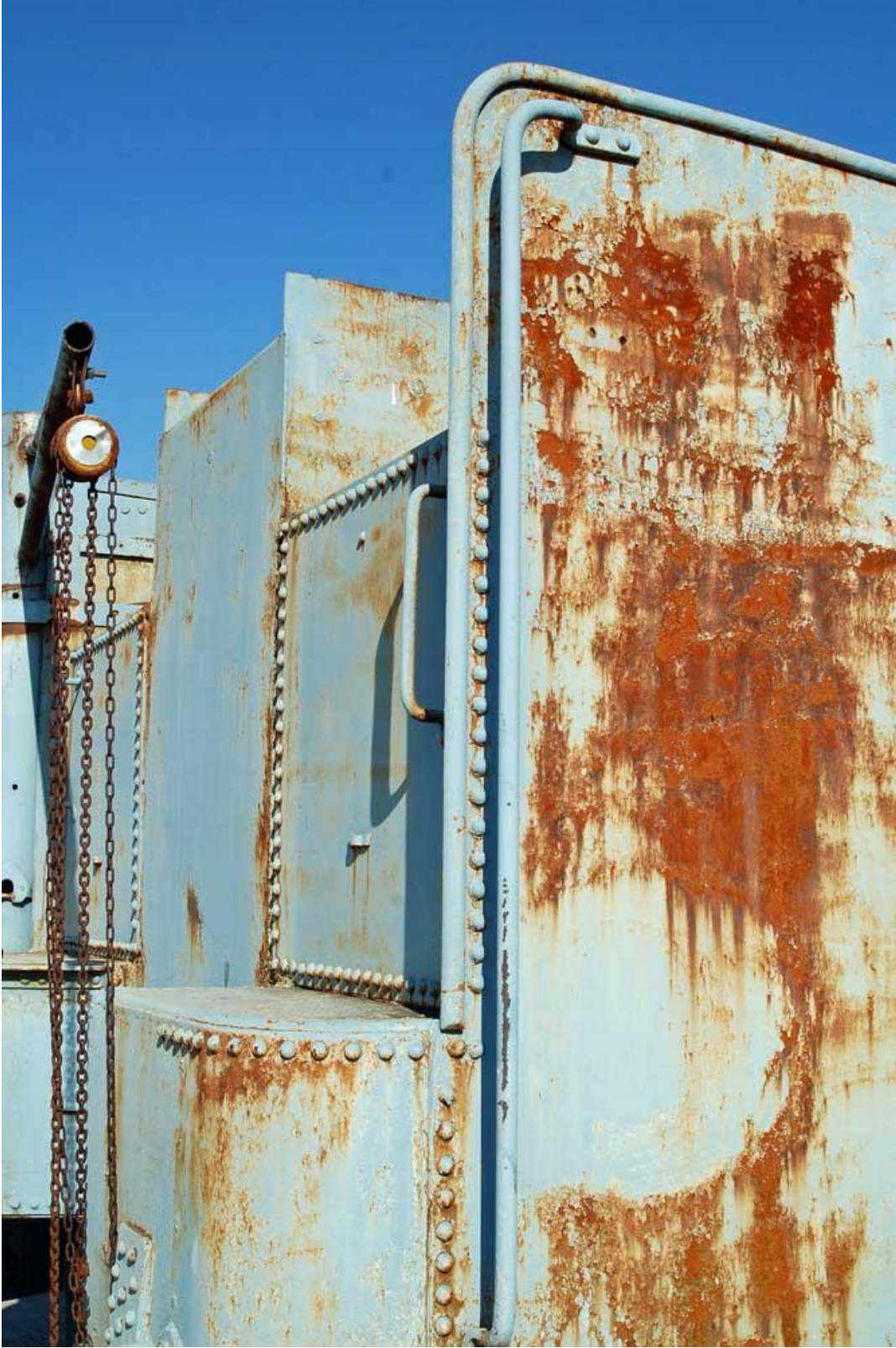
Chapter member Larry Cain recently visited the Springdale Public Works Department on Randall Wobbe Road to drop off some used oil. He thought he saw a tender and mentioned it to me .Here are some photos of a steam engine tender.



This looks like the end closest to the engine. The tender is used to store “tack”, an oil put down before a dirt road is paved.



The end furthest from the engine has a cast metal tag identifying it as a tender. The digit “8” or “9” is visible followed by a “5” ?? and “00”.



The Springdale Road Department staff was helpful. The consensus was that the tender had been in use for thirty to forty years.



North Dakota Flooding makes for tough going.

BNSF units almost overcome by flooding near New Rockford, ND on April 13, 2011. It will get much worse when the ice begins to melt! Our thanks to Rick and Candace Hebar



From: stark_cb@msn.com
To: abm_nrhs@yahoo.com
Subject: Dates to mark on your calendar
Date: Tue, 29 Mar 2011 12:07:02 -0500

ATTN: All hands please mark these very important dates on your call board calendar;

1. National Train Day May 14- A&M Brenda would really like us to participate on this Day at Van Buren. If we do we need a full crew for the G scale.

Last year we put Motorman Mitch in hospital as he was working alone. Brenda has done much for us in the past and is continuing to help at present.

Our Div. needs to pull this consist up the hill and down to Van Buren.

2. Toy & Game Day at Shiloh Museum June 11. Al Lord would like us to help with this Kids day outing with our G Scale etc.

Of course they do much for us. Signalman Tom D. will give us much details on this one.

3. The very important last weekend in June for that 4 DIV Meeting-We'll need all hands on call.
Dispatcher, Bob

An ice sculpture from Fairbanks, Alaska. Photo by Bill Ussery's son, Bill.

