

HOW ARE THE
CHILDREN

Capstone Showcase

PBL FINAL

Purpose & Overview

Welcome to Capstone Showcase!

It's a time for introspection and celebration of the student journey as filmmakers. Each student will get their own moment to reflect on personal growth, discoveries, and the role they played in their production group. Students will then come together to reflect on their roles, strengths, and challenges as a production team, using their film protocols they completed through filming as a reference.

In preparation for their own documentary screening to classmates, production groups will review adherence to filming guidelines, evaluating, 'Did we follow the guidelines?' The Capstone Showcase includes presenting these documentaries to classmates, followed by Q&A panels for reflection. By week's end, students gain insights into individual and group performance, efficiency, and the documentary's impact. Other groups assess each film, leading to a final discussion to identify the top project.

Lesson Overview

Day 1

Individual Self-Reflection

Day 2

Production Group Reflection

Day 3

Documentary Assessment

Day 4 - 6

Screening + Panel

DAY 7

Class Selection of Documentary for Submission to CWK Network

Day 1: Individual Reflection

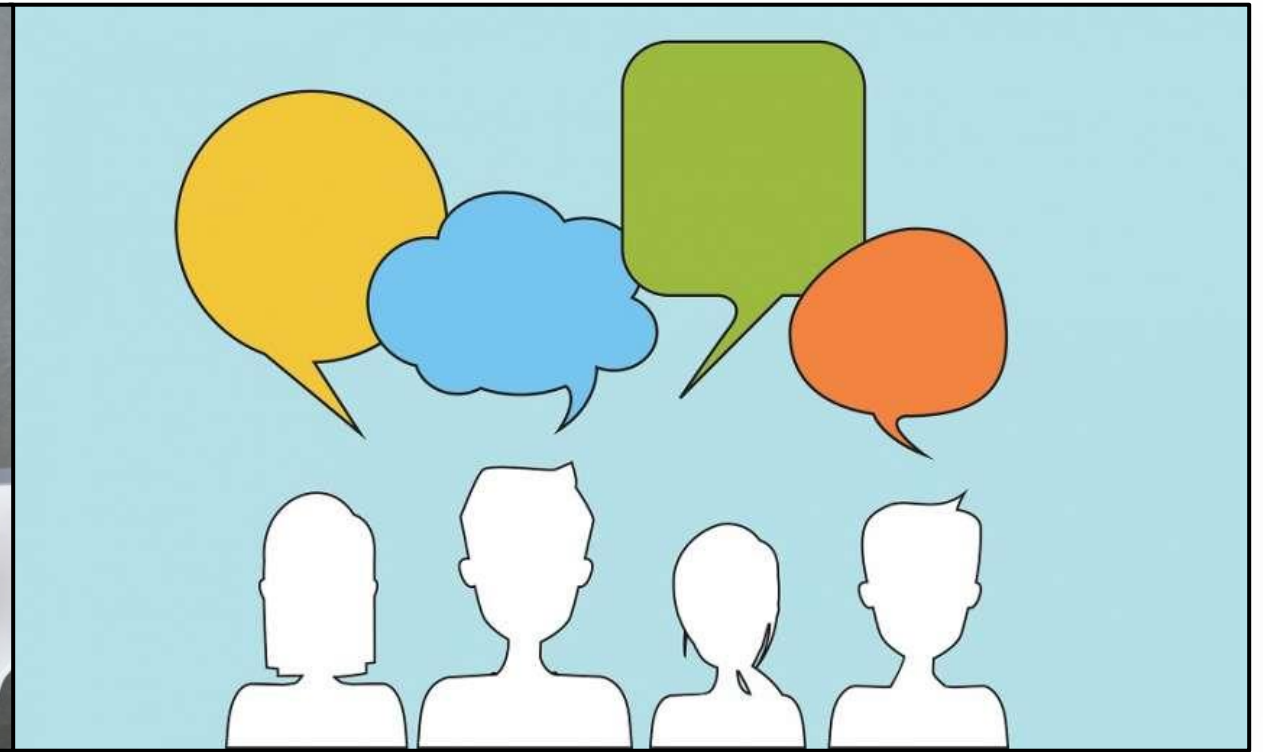


Individual Reflection

1. Reflect on the quote provided in the [Mindfulness Activity](#).
1. Take 15 minutes to respond to the prompts on the [Individual Reflection sheet](#) which explore your experience as a documentary filmmaker. After, share your takeaway from the Mindfulness Activity and any individual reflections you would like to share with a classmate from another production group.



Day 2: Group Reflection



Group Reflection



As a production group, review your Filming Protocols and respond to the prompts provided in the [Production Group Reflection Activity](#).
Take note of your responses.

Day 3: Production Group Self Assessment



Production Group Self-Assessment

As a production group, complete the [Documentary Assessment](#) based on your own short documentary. Remain as objective as possible and think critically on the quality of work presented within the final edited sequence.



Self Assessment

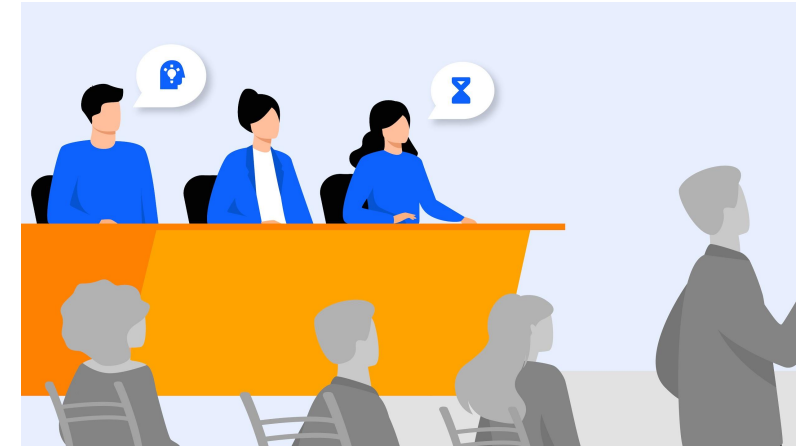
Days 4-6: Screening & Panel



Screening & Panel

Presenting Group

As a production group, screen your short documentary to your classmates. Each production group member must introduce themselves and their role in the production. Following your film, take 10 minutes to conduct a brief panel discussion, taking feedback and questions from other production groups. As classmates provide feedback and ask questions, respond by referencing your individual and group reflections.



Viewing Groups

As a production group, complete the [Screening Documentary Assessment](#) for each documentary viewed in class. During the brief panel discussion, be active participants, asking questions and giving respectful and relevant feedback on each film. After the panel has concluded, complete one Screening Documentary Assessment as a production group. One production crew member must be responsible for keeping these forms if not completed digitally.

Day 7: Class Selection



Class Selection

Class Documentary Selection Process:

1. Production Groups review their [Screening Documentary Assessments](#) completed after each screening on the previous days.
1. Groups discuss the final scores assigned, weigh other considerations if needed and select ONE film for submission to the teacher as their selection. Clearly mark the assessment in the area indicated that this is your final choice.
1. When the final selection has been determined by each group (approximately 10-15 minute activity), the teacher will ask each group to share their final selection with the class, giving a brief rationale of why this film was selected (allow one minute per group)

