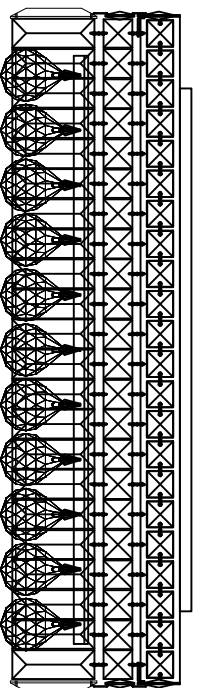


Trade Mark:
CRYSTAL WORLD INC

Product Name: Ceiling lamp
Model :8005C20C-R
120Vac, 60Hz,AC ONLY
Lamp size:Ø20"XH6"

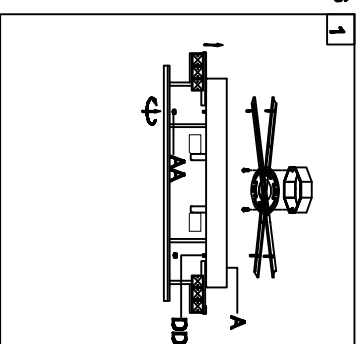


CEILING LAMP ASSEMBLY INSTRUCTIONS

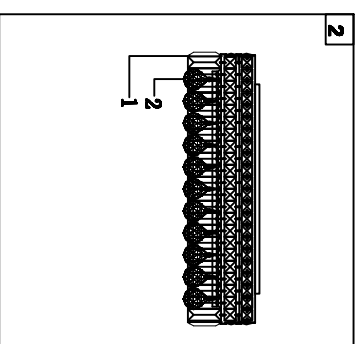
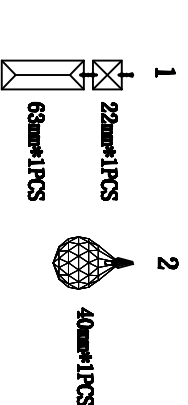
1. Place fixture(A) onto mounting screws (DD), secure with cap nuts (AA).

Hardware Used

AA Cap nut	⊖	X 4
DD Mounting screw	⌘	X 4



2. Please put the crystal (1) (2) to the fixture .



3. Install light bulbs (not included).

Use bulb
120V E12 8*40W Max.

