

# Plan B Routes



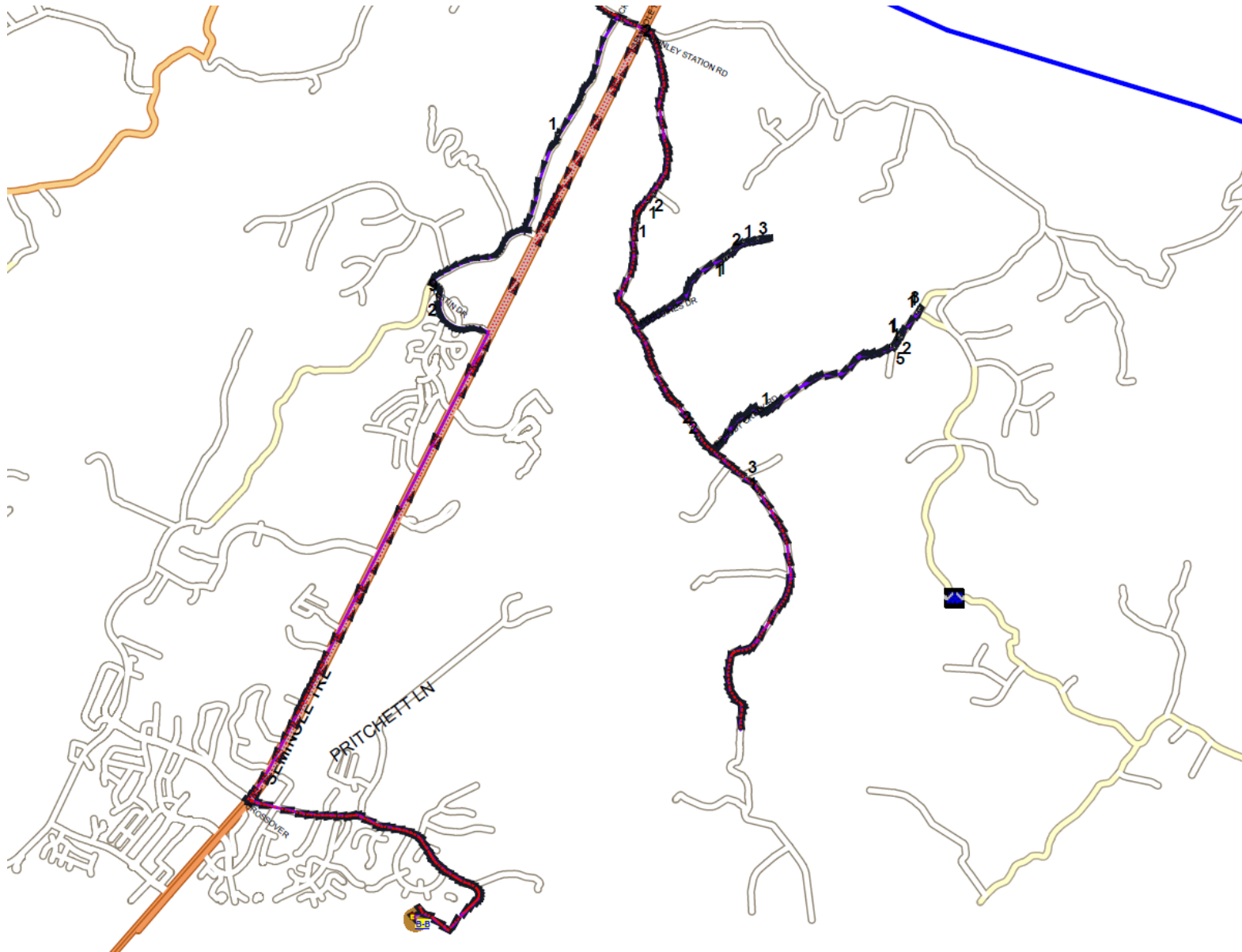
# Plan B Routes

- ▶ Purpose - allow schools to open on days when inclement weather would normally result in school closure
- ▶ Method
  - Move stops from smaller roads that are unplowed to more heavily-travelled roads that are plowed
  - Eliminate sections of roads that do not have a reliable turnaround

# Plan B Routes

- ▶ Would affect 60% of routes and 30% of students
- ▶ When used, Plan B would be implemented county-wide

# Baker Butler Bus 107

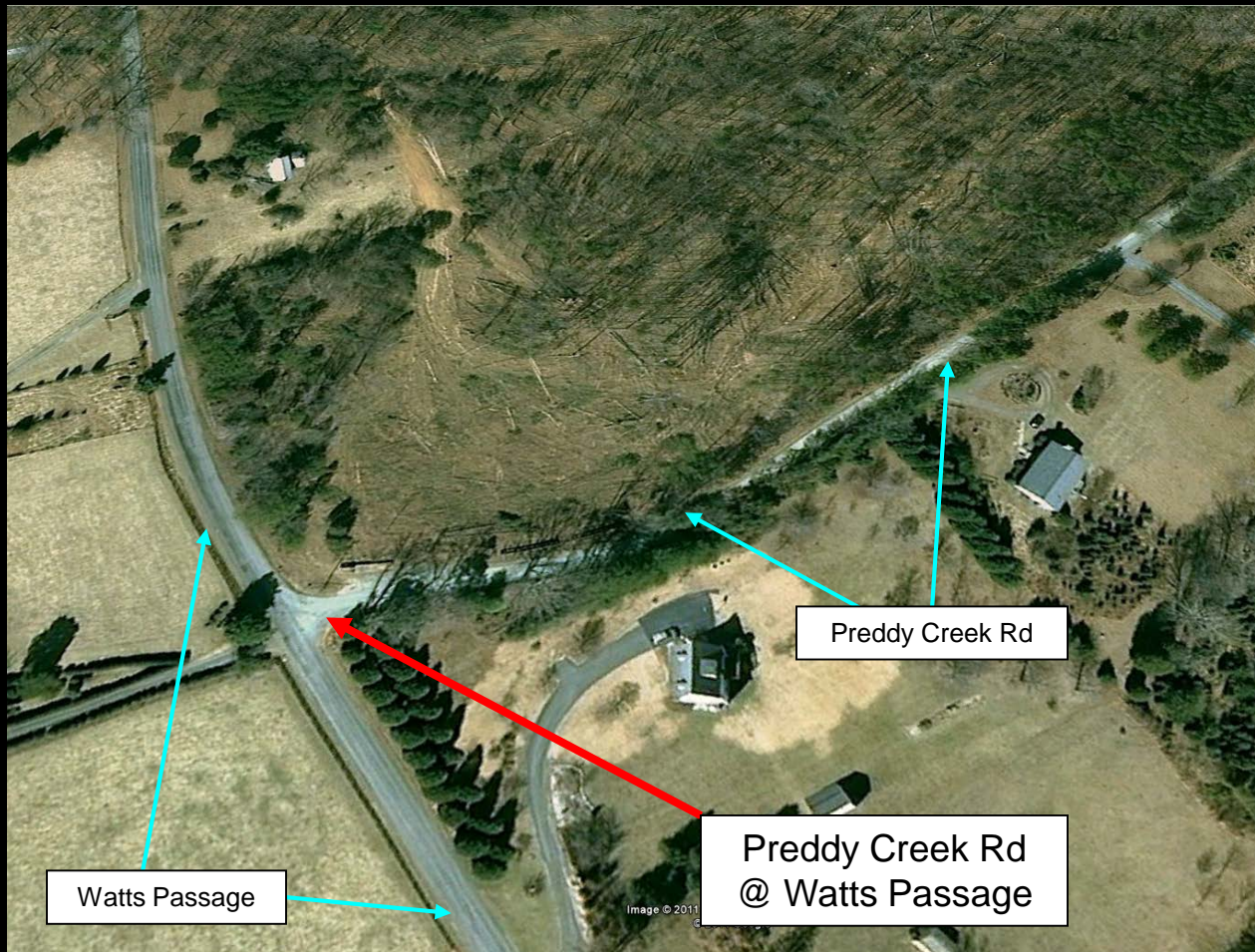






# Preddy Creek Road

This stop would service Baker Butler, Sutherland, and Albemarle High. Up to 15 Baker Butler students would use this stop in up to 9 parent vehicles. Up to 3 Sutherland students in up to 3 parent vehicles would use this stop. Up to 9 Albemarle High students in up to 6 family vehicles would use this stop.



# Plan B Routes - Example

- ▶ Travel down Preddy Creek, Forloines, and Dickerson eliminated
- ▶ Large section of Watts Passage eliminated because of turnaround inaccessibility
- ▶ Plan B route is 30 minutes vs 53 minutes for the existing route

# Plan B Routes - History

- ▶ Tried once in the late 90's
  - Not received well by parents
  - Stops had poor visibility
  - Not enough room for parking
  - Lower attendance



# Plan B Routes - Recommendation

- ▶ Plan B routes are not recommended
  - Strategy does not account for students that walk to school or teen drivers
  - Will require some students to walk long distances on unplowed roads if the parents are not home
  - Safety at resulting stops compromised

# Plan B Routes - Recommendation

- Will be difficult for students with special needs
  - ▶ Portal-to-portal students will not be transported
  - ▶ Students with mobility issues may not attend or will require long load times at stops on busy roads
  - ▶ Will be disruptive for autistic students
- Will likely negatively impact attendance
- Will require more Routing staff time to maintain manifests

# 2013-14 Decisions vs Surrounding Counties

## 13/14 Inclement Weather Summary

Date	ACPS			Surrounding 8 Counties (No C'ville)		
	On-Time	Delay	Close	On-Time	Delay	Close
11/26	-		1	-		8
12/9			1		1	7
12/10			1		3	5
12/11	1			5	3	
1/7	1				2	6
1/8	1			4	4	
1/10		1			1	7
1/16	1			3	5	
1/22			1			8
1/23			1			8
1/24	1				1	7
1/29			1		1	7
2/5	1				3	5
2/12	1			2	6	
2/13			1			8
2/14			1			8
2/18	1			2	6	
2/26	1			7	1	
3/3			1			8
3/4			1			8
3/5			1			8
3/6	1			7	1	
3/7	1			4		4

<b>11</b>	<b>1</b>	<b>11</b>	<b>34</b>	<b>38</b>	<b>112</b>
<b>48%</b>	<b>4%</b>	<b>48%</b>	<b>18%</b>	<b>21%</b>	<b>61%</b>

# Current Actions

- ▶ More thorough assessment than in previous years
- ▶ Piloting automatic chains
- ▶ Establishing a closer relationship with VDOT
- ▶ Implemented cold weather plans
  - Fuel additive
  - Plug in or central parking
  - Start early

# Automatic Chains

