



## **POLYASPARTIC FLOOR COATINGS**

- Quick Return to Service
- One-Day Application Process
- High Gloss and Color Retention
- UV Stable both Indoor and Outdoor
- Zero or Low Emitting Green Friendly Coatings
- Three Times More Durable Than Epoxy
- Anti-microbial Additive Available
- Achieve a Number of Finishes for Design Flexibility

A floor is more than just a surface to walk on. It can go a long way in helping to showcase products and illustrate a company's brand. Whether it be a custom floor coating containing a logo or an anti-slip surface in a heavy-traffic area, selecting the best flooring solution can dramatically enhance any building's appearance.

Floors are subjected to just about every kind of abuse - impact, abrasion, chemical attack, and thermal shock. Concrete floors are not designed to take this continual abuse.

The main purpose of a polyaspartic floor coating is to provide protection to the slab from deterioration or contamination, or to provide some added benefit such as aesthetics, wear, non-skid, chemical resistance, ease of maintenance, physical performance, and a myriad of other properties. No other surface in a building takes more abuse than floors, regardless of the type of building, whether it be industrial, commercial, or residential.

Advacoat coatings are bonded directly to the surface and offer long-term protection and aesthetic value. Decision makers today, whether it be architects, facility managers, and/or homeowners can rest assure that Advacoat polyaspartic coating systems result in the best performance and lowest life cycle cost.

## RETURN TO SERVICE WITHIN 24 HOURS WITH THE ADVACOAT QUICK CURE THREE COAT PROCESS

1. Sand, grind, or blast to remove all latent from the concrete.
2. Fill spalling concrete with quick cure grout, if required.
3. Use the polyaspartic primer coat to allow color to absorb into concrete.
3. Apply the polyaspartic color coat.
4. Apply a clear topcoat to finish the application.

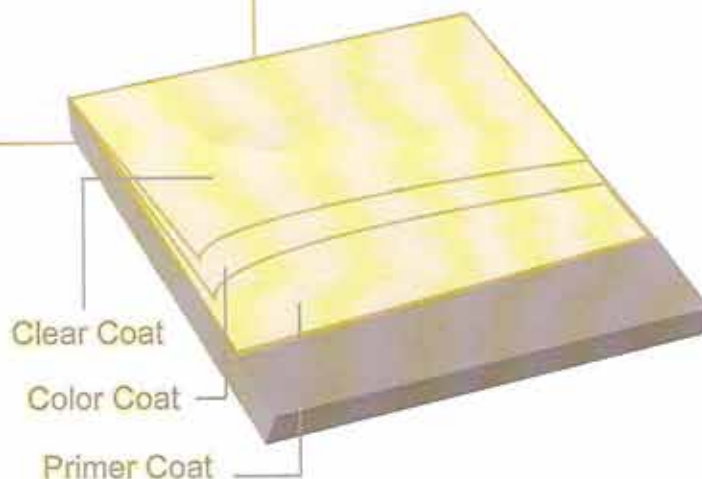
### Cure Schedule:

- Tack Free-1 Hour
- Walk On-3 to 5 Hours
- Return to Service-24 Hours



## Life-cycle Considerations

When evaluating flooring options, a key factor when considering life-cycle costs includes not only the floor's durability but also maintenance expenses. Advacoat® flooring surfaces are completely impermeable to liquids, oil and dirt making them relatively easy to maintain. They can be kept clean with environmentally friendly PH neutral cleaners and water and they do not require waxing.



## Advacoat Flooring System Benefits

- Polyaspartic systems can be applied at temperatures as low as -30°F and as high as 140°F, depending on the formulation. In hot and cold climates contractors can install them all year long.
- When cured they can tolerate temperatures as high as 350°F.
- They are UV light stable, providing "water clear" finishes.
- Polyaspartics have much greater abrasion and impact resistance than epoxy coatings.
- They do not blush or whiten.
- Curing is quick and work can be turned over to owners for use within a couple hours after application.
- High ambient humidity doesn't restrict their application, although polyaspartics set more quickly in high humidity.
- They don't stain, they resist fat and oil penetration, and concrete is protected from mild acids.
- Polyureas have excellent wetting and penetrating characteristics, which means they form excellent bonds to concrete.



### Clear Coat System

Provides a "water clear" finish while protecting concrete surfaces.

### Solid Colors

Standard and custom colors available. The topcoat is available in gloss or matte finish. Antimicrobial additive available for food processing or health care facilities.



### Metallic Colors

The metallic pigment is mixed into the polyaspartic coating and produces an eye catching design. Metallic's are commonly installed in museums, showrooms, and restaurants/clubs.



### Quartz

On the Mohs Scale of Hardness quartz ranks fourth in hardness behind topaz, corundum and diamond (first). Quartz polyaspartic flooring retains flexibility and rugged durability. This system is most-likely to withstands abuse from forklifts, pallet jacks, and heavy furnishings.



### Vinyl Chips

Offer great design flexibility with a wide-variety of color chips including florescent black light, stripped, and multiple color mixes. The chips are cast into the polyaspartic coating systems.

### Vinyl Floor Chip Sizes



1/32"



1/16"



1/8"



1/4"



1/2"

## Polyaspartic Coating Colors

### Solids

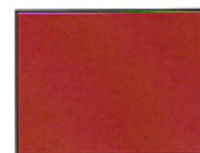
### Metallics



Black



Aged Bronze



Tile Red



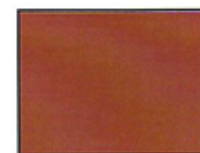
Deep Blue



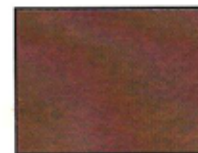
Dark Gray



Pearl



Mocha



Rustic Copper



Cantilever Tan



Classic Silver



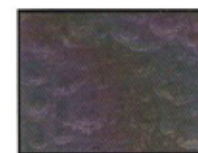
Light Grey



Ancient Bronze



Saddle Tan



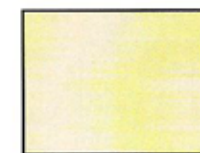
Charcoal



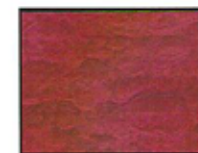
Yellow



Ancient Gold



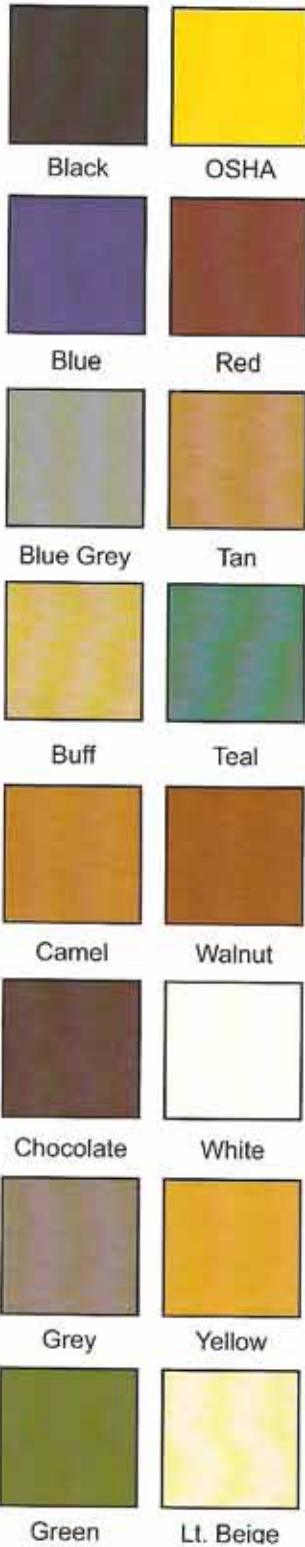
Ostrich Feather



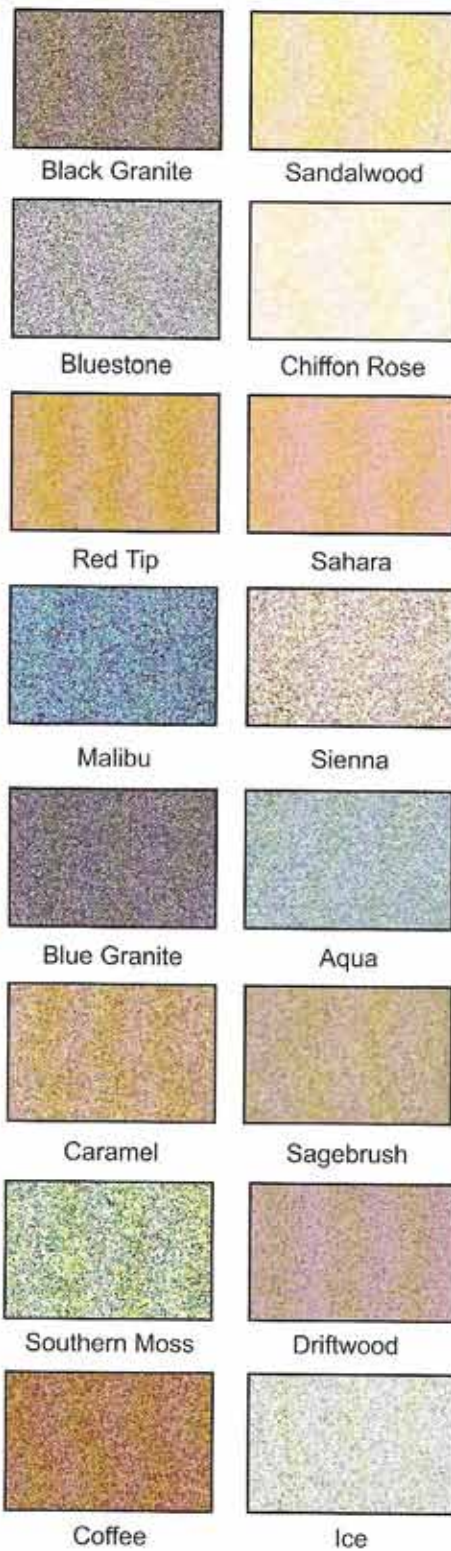
Red Velvet

## Aggregate Types & Colors

### Quartz Solids



### Quartz Color Blends



### Acrylic Chips

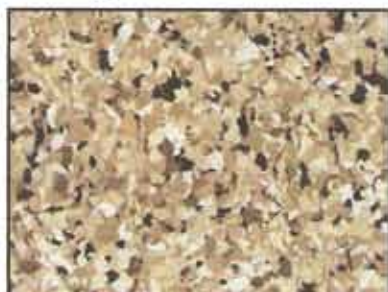


Advacoat®  
 14425 N 79th St., Suite E  
 Scottsdale, AZ 85260  
 480.888.2628 Office  
 877.830.2628 Toll-Free  
 480.502.9071 Fax  
 info@advacoat.com  
 www.advacoat.com



# COLOR CHART

## BLENDED CHIPS



**SADDLE TAN**



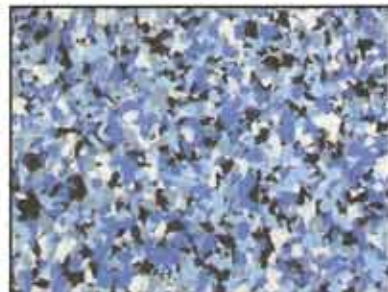
**TUXEDO**



**COCONUT**



**DESERT TAN**



**COOL ICE**

Colors may not be exact due to limitations in the printing process.  
For precise color fidelity, finished sample boards should be used