



PM-000208  
22v1

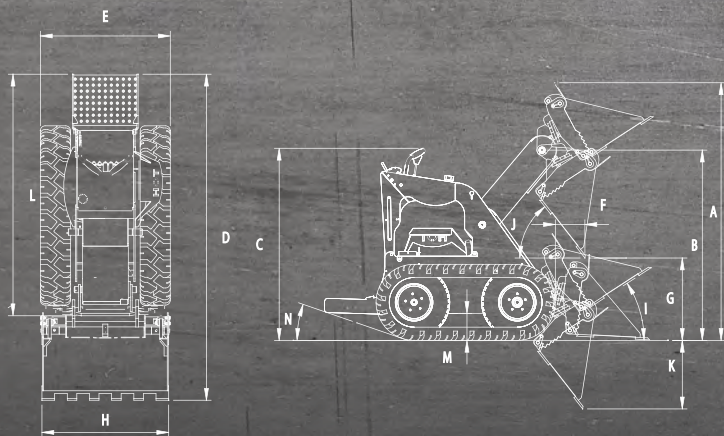
# KANGA LOADERS

BUILT TOUGH SINCE 1981



MULTI-TASK COMPACT SKID STEER LOADER

# 2 SERIES



The above graphics are intended for illustrative purposes only.

<sup>1</sup> Tipping load and Rated Operating Capacity (ROC) have been determined to ISO 14397-1. This is to represent general loader capabilities, and cannot be used for material load without adjusting for the specific attachment.

<sup>2</sup> Power Rating is the gross power of the production engine only as measured in accordance with SAE J1995 at 3600 RPM. Mass production engines vary from this value. Actual power output for the engine installed in the delivered machine may vary depending on numerous factors. These factors can include operation speed of the engine in the application, environmental conditions, and other variables.

<sup>3</sup> Volumes based on ISO 7546:1983.

PERFORMANCE	PETROL - TK216V		PETROL - KK216V	
Tipping load with no bucket <sup>1</sup>	331 kg	729 lbs	337 kg	742 lbs
Rated operating capacity (ROC) with no bucket <sup>1</sup>	149 kg	328 lbs	169 kg	371 lbs
Travel speed	5.4 km/h	3.4 m/h	5.4 km/h	3.4 m/h
Fuel capacity	7 L	1.85 gal	7 L	1.85 gal
Fuel type	PETROL		PETROL	
Machine mass with no operator / bucket	472 kg	1041 lbs	444 kg	979 lbs
ENGINE				
Manufacturer	Vanguard 305777		Vanguard 305777	
Gross power rating <sup>2</sup>	11.8 kW	16 hp	11.8 kW	16 hp
DRIVE SYSTEM				
Drive control	Soft touch hand levers		Soft touch hand levers	
Throttle control	Hand levers		Hand levers	
Tracks/Wheels with direct drive hydraulic motors	Tracked		Wheeled	
HYDRAULICS				
Gear pump displacement	8 cc/rev	0.488 cu.in/rev	8 cc/rev	0.488 cu.in/rev
Pump output	24 lpm	6.3 gpm	24 lpm	6.3 gpm
System pressure	186 bar	2700 psi	186 bar	2700 psi
Hydraulic reservoir capacity	51.5 L	13.6 gal	51.5 L	13.6 gal
KANGA BUCKETS				
Standard bucket capacity (heaped / struck volume) <sup>3</sup>	0.077 m <sup>3</sup> / 0.059 m <sup>3</sup> (2.72 cu ft / 2.08 cu ft)			
4in1 bucket capacity (heaped / struck volume) <sup>3</sup>	0.084 m <sup>3</sup> / 0.063 m <sup>3</sup> (2.97 cu ft / 2.23 cu ft)			
DIMENSIONS				
<b>A</b> Maximum operating height with bucket	1580 mm	62.2"	1570 mm	61.8"
<b>B</b> Height to hinge pin	1185 mm	46.7"	1175 mm	46.3"
<b>C</b> Overall height	1210 mm	47.6"	1200 mm	47.2"
<b>D</b> Overall length with bucket	2070 mm	81.5"	2070 mm	81.5"
<b>E</b> Overall track / wheel width	800 mm	32.3"	770 mm	30.3"
<b>F</b> Bucket horizontal reach at 57° (arms up)	340 mm	13.4"	340 mm	13.4"
Bucket horizontal reach (arms level)	840 mm	33.1"	850 mm	33.5"
<b>G</b> Dump height Std. bucket	595 mm	23.4"	585 mm	23"
Dump height 4in1 bucket	1185 mm	46.7"	1175 mm	46.3"
<b>H</b> Bucket width	800 mm	31.5"	800 mm	31.5"
<b>I</b> Bucket maximum rollback	36°		36°	
<b>J</b> Bucket maximum dump angle	48°		48°	
<b>K</b> Ground penetration	435 mm	17.1"	445 mm	17.5"
<b>L</b> Overall length less bucket	1560 mm	61.4"	1560 mm	61.4"
<b>M</b> Ground clearance	160 mm	6.3"	150 mm	5.9"
<b>N</b> Angle of departure	17°		17°	
Approach angle with no bucket (and with bucket rolled back)	90° (32°)		90° (32°)	

## SPECIFICATIONS



### LONG-LIFE LINKAGE PINS

Greasable pins ensure extended cycle life of pins and bushes.

### IMPROVED SOFT-TOUCH CONTROLS

- Smooth to drive.
- Improved operator ergonomics.
- Improved safety, with safety cut-out switch if no operator is present.

### PERFECTLY BALANCED

Superior design enables the loader to remain balanced either fully loaded, or with attachment removed.

### POWERFUL V-TWIN ENGINE

Engineered to take on the most demanding commercial applications. Featuring many technologies to extend reliability and enhance performance.

### FULL FLOW AUXILIARY

Hydraulic power outlet.

### FASTEST QUICK-HITCH

Change attachments in a matter of seconds.

### LARGE NON-SLIP OPERATOR PLATFORM

Wide stance for improved safety and fatigue reduction. Perforated platform, free from hot engine obstruction.

### PERFECTLY BALANCED

Superior design enables the loader to remain balanced either fully loaded, or with attachment removed.

### BUILT TO TRAVERSE OVER VARIOUS GROUND CONDITIONS

Choice of heavy duty tracks or wheels.

### SELF-LEVELLING BUCKET COMES STANDARD

Makes it impossible for the load to tip onto the operator or the machine.

## SAFE, USER-FRIENDLY OPERATION AND PEACE OF MIND

Since inventing the mini loader in 1981, Kanga has continued to lead the industry in **safety**, **innovation**, and **performance**. Kanga Loaders adheres to Occupational Health & Safety government guidelines, and operates under World's Best Practices, incorporating H.A.V. (Hand Arm Vibration) standards, as well as internationally recognized Risk Management studies and procedures.



### LARGE OPERATOR PLATFORM

Allows the operator a wider stance, for improved safety and fatigue reduction.



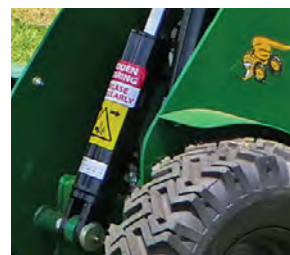
### NARROW ACCESS

With an overall width of 770mm (wheeled) / 800mm (tracked), you can access the worksite through side gates and standard doorways.



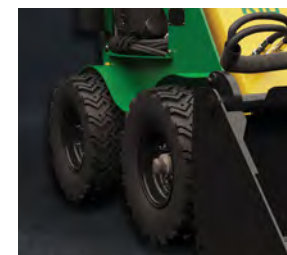
### SAFETY AUXILIARY CUT-OUT

Power to the attachment is cut when the controls are released, ensuring maximum safety for the operator.



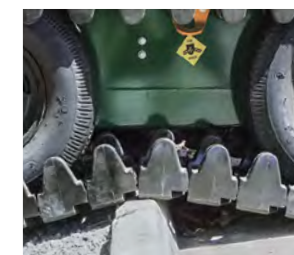
### SAFETY RELIEF VALVE

The lift circuit is set at 1500psi to protect the operator from overloading the machine, and is located on the machine's rear, for ease of access.



### LOW CENTRE OF GRAVITY

When the bucket is lowered, its ground clearance is the same as the machine. The loader arms can be fully lowered to rest the bucket in its rollback position, aiding when filling, and also transporting material throughout the worksite without load spillage.



### TRAVERSE OVER UNDULATING GROUND

Crawl over gutters and uneven terrain with confidence. Unlike other brands with fixed under-carriage track systems, Kanga's stable wrap-around tracked system will not pivot whilst traversing over undulating ground.

# VAST SELECTION OF ATTACHMENTS SPECIFICALLY AVAILABLE FOR THE 2 SERIES

## LAWN & GARDEN CARE

### LAWN AERATOR | OK50405

Rejuvenates old tired lawns, and reduces compaction. The holes created by the aerator allow oxygen, water, and nutrients into the soil profile which stimulate better grass growth. 765mm (30") wide.



### TURF CUTTER | OK50180

With only one moving part (front roller), the turf cutter is a low maintenance attachment which provides stability to set the required cutting depth, and effortless control for removing old turf, transplanting sod, and removing turf prior to trenching. Cutting width: 300mm (12").



### CARRYALL LEVELLER | OK50110

For transporting bulky items, paving tiles, cement bags, nursery plants, sod, turf and fence palings. Ideal for preparing top soil for sod or turf laying and levelling bedding sand for pavers. 900mm (35") wide.



### HYDRAULIC ANGLE BLADE | OK85003

Backfill Blade ideal for backfilling trenches, pushing loose soil, feed lot clean-out. Fingertip hydraulic controlled side shift tilts blade from left to right. 1000mm (39") wide.



### ROTARY TILLER | OK83701

Heavy duty tiller turns the toughest ground into beautiful garden beds. Perfect for sod and turf bed preparation. Cuts 120mm (4.5") deep, and 750mm (30") wide.



## BRUSHES

### BUCKET BROOM | OK50303

Clean up all manner of debris and leave your construction site clean. Self loading bucket, ideal for side walks, parking lots, factories, industrial sites and feed lots etc. Reverse rotation to push snow and gravel. Broom swings away automatically as bucket is emptied.



## TRENCHERS

### TRENCHER | OK42025

600mm (24") maximum depth, 100mm (4") width. Ideal for irrigation, garden lighting, drainage trenches.



## MULTI-TOOLS

### MULTITool BAR CARRIER | OK50063

The Multitool Bar Carrier features a 'quick attach' system that will have compatible Kanga tools in place in mere seconds. The Multitool Bar Carrier can be used with the Tow Hitch, and Forks.



### RIPPER/HOOK | OK30403

Ideal for ripping hard ground before digging with a bucket, and can also be used as a lifting hook. A tow ball can also be attached to the frame for towing.



## SPECIALIST TOOLS

### VINYL STRIPPER | OK50220

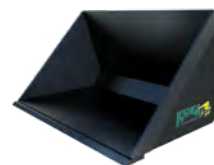
Quickest way to remove floor coverings - including vinyl, carpet, wooden floors, and even scraping the adhesive used.



## BUCKETS

### STANDARD BUCKET | OK11630

Open shape helps prevent sticky materials from clogging. Volume sized to rated load capacity cannot be exceeded when brim filled with heavy materials, wet sand or gravel. Ideal for everyday use, shifting sand and soil, clean up and backfill. Heaped volume: 0.077m<sup>3</sup> / 2.72cu ft.



### 4 IN 1 BUCKET | OK60063

Enables front blading, back blading, plus all the advantages of a regular bucket. Open jaws to dump at full height. Use jaws for stump, post and tent peg pulling, lifting, placing rail road ties and rocks, broken tree limbs & broken concrete etc. Heaped volume: 0.084m<sup>3</sup> / 2.97cu ft.



### MULCH BUCKET | OK50135

For handling bulky, light materials such as bark chips, mulch and sawdust, quickly and easily. Straight cutting edge to scrape floors clean. Use in horse stables, stud farms and feed lots etc. Heaped volume: 0.115m<sup>3</sup> / 4.06cu ft.



### RUBBLE BUCKET | OK50191

Ideal for preparing difficult rocky soil for sod and turf. For removal of unwanted rocks and sticks, leaving soil behind. Makes light work of the most difficult site conditions. A grapple attachment is also available.



## POWER HEAD

### POWER HEAD | OK30401

Driving head for augers with overall diameters between 100mm (4") - 450mm (18"), as well as mixer bowl. Comes with tow ball and ripper.



### MIXER BOWL | KA-000008

Convert your Kanga into a mobile concrete mixer. No more hauling materials to the mixer or concrete to the job. Easily lift and place concrete over low walls or into post holes etc. Requires an Auger Power Head attachment (OK30401).



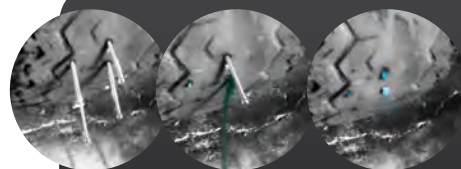
### AUGERS

Available with Tungsten carbide tip pilots with Earth, Tungsten Carbide, or Multi-faceted Tungsten teeth, in single or double cutting head configurations. Choose from diameters between 100mm (4") and 450mm (18"). Tree augers also available with a root ball of up to 500mm (20").



### AUGER EXTENSION | I-KIDEXT-300-K

Fits between the power head and auger, to increase digging depth.



## PUNCTURE-PROOF YOUR TYRES

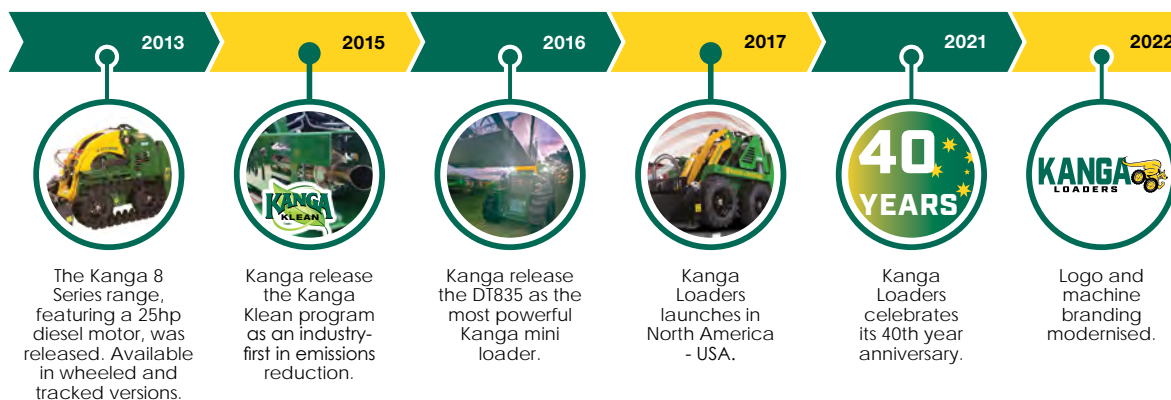
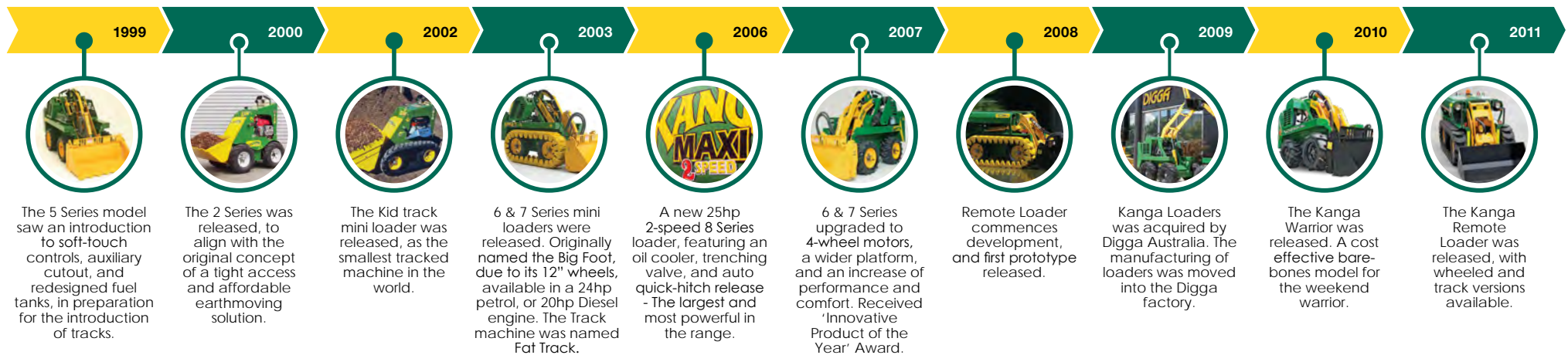
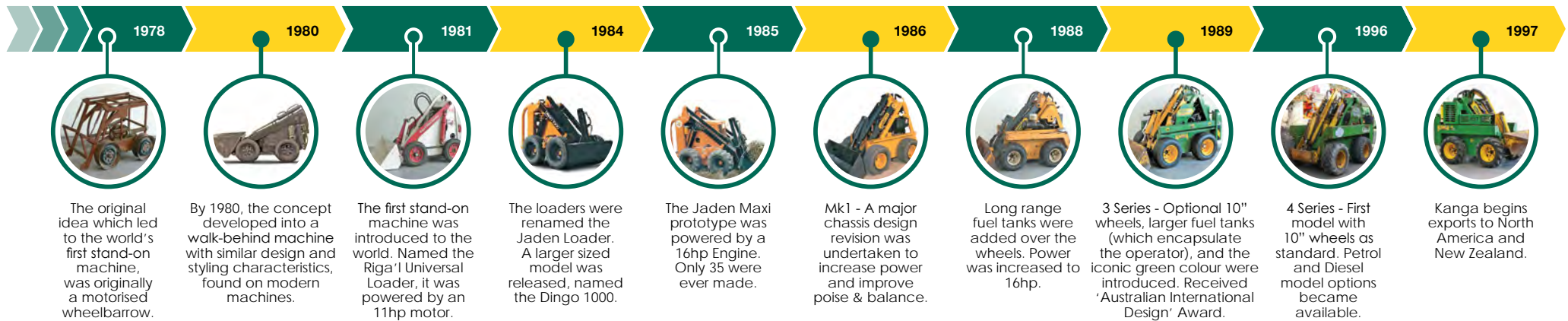
### ANTI-PUNCTURE TYRE RESEALING SYSTEM

Kanga Loaders offers a puncture-proof tyre system for your loader. The puncture-proof tyre system is a resealing substance that is pumped into the tyre through the valve stem, and remains liquid for the life of the mounted tyre. As the wheel rotates,

centrifugal forces spread the liquid evenly over the interior tyre lining. If the tyre is punctured, thousands of strong interlocking 'reseal' fibres clot in and around the puncture to prevent any loss of air, forming a seal. Available from your Dealer.

THE TOUGHEST JOBS SORTED, QUICKLY AND EASILY





# KANGA LOADERS

## MULTI-TASKING MADE EASY

Since being established in 1978 as Jaden Engineering, the Kanga loader has been a source of innovation for the multi-task compact skid steer market. Upholding the highest safety industry standards, starting with the original idea and prototype in 1980, Kanga later developed the first production model in 1981. Kanga Loaders has since become an Australian household name within the mini loader industry.

# GET THE BEST FROM YOUR KANGA WITH OPTIONAL ADD-ONS...

## ✓ SAFETY & CUSTOMISATION ADD-ONS

- ▶ **LED Headlights.**
- ▶ **Horn** - often required for OH&S purposes.
- ▶ **Flashing Amber Beacon Light** - often required for OH&S purposes.
- ▶ **Oil Cooler** - maintains the oil temperature for optimal performance.
- ▶ **Handbrake** - a park brake operated by hand (extra safety brake).
- ▶ **Emergency stop button** - shuts down the machine functions in the event of an emergency.
- ▶ **Back Protection Bars** - an extension of the safety cell used to encapsulate the operator when operating in confined spaces, protecting the rear of the machine from unnecessary damage.
- ▶ **Battery Isolator Switch** - with an option for a padlock available, to enable machine lock-out.
- ▶ **Colour Customise** your machine to match the rest of your fleet, or corporate colours.

# THE WORLD'S SMALLEST MINI LOADER

Fitted with a special range of Kanga attachments, you can complete the toughest jobs quickly and easily. With residential site access becoming increasingly smaller, the 2 Series is the popular choice among landscapers, pool installation, builders, contractors, plumbing, electrical contractors, and many more.



- ✓ Fuel efficient operation
- ✓ High output performance
- ✓ Reliable
- ✓ Quiet
- ✓ Easy to start
- ✓ Easy to use & maintain



## SMALL BLOCK V-TWIN ENGINE

Vanguard is the commercial arm of Briggs & Stratton - The world's largest producer of small four-cycle engines. Producing power equipment for over 40 years, Briggs & Stratton's 'Cooler / Cleaner Technology' reduces engine and oil temperatures, while also pre-filtering air, before pushing it into the air cleaner. A poly core housing also helps reduce noise coming from the engine.



**TURNING HARD WORK  
INTO EASY BUSINESS  
SINCE 1981**

- ✓ **AUSTRALIAN DESIGNED**
- ✓ **AUSTRALIAN OWNED**
- ✓ **AUSTRALIAN MADE**

**PHONE** 1300 4 KANGA  
**EMAIL** info@kangaloader.com



## WARRANTY



### ENGINE

**3 YEARS/UNLIMITED**  
Petrol machines

### COMMERCIAL PRODUCT

**5 YEARS**  
Chassis structure.

**2 YEARS/1,000 HOURS**  
Arm/tilt assembly workmanship and structure.

**1 YEAR**  
Other components and electrical.  
Warranty Conditions Apply.

**kangaloader.com**