



## You make a difference

Offer hope to over 3 million people in the U.S. who suffer from Chiari, syringomyelia, and related disorders.

Donate online, or  
mail your donation to:

29 Crest Loop  
Staten Island, NY 10312



## Support us with...

- Recurring monthly or multi-year pledges
- Company matching gifts
- Planned giving
- Gifts of securities
- Sponsorships
- United Way giving
- Member fundraisers
- More here: [bobbyjonescsf.org/waystogive](https://bobbyjonescsf.org/waystogive)



[bobbyjonescsf.org](https://bobbyjonescsf.org)



[/bobbyjonescsf](https://www.facebook.com/bobbyjonescsf)



[@bobbyjonescsf](https://twitter.com/bobbyjonescsf)



[@csinfo2007](https://www.youtube.com/c/csinfo2007)



[@bobbyjonescsf](https://www.instagram.com/bobbyjonescsf)



With every person that our foundation touches, the legacy of Bobby Jones lives on.

Read about the legend on our website.

## RESEARCH EDUCATION AWARENESS ADVOCACY



## Get In touch

[info@bobbyjonescsf.org](mailto:info@bobbyjonescsf.org)

718-966-2593



05/2023





## Who we are

The Bobby Jones Chiari & Syringomyelia Foundation, Inc. is a non-profit organization founded in October 2007 with the goal of raising awareness and finding a cure for Chiari malformation (CM), syringomyelia (SM), and related disorders.

Bobby Jones CSF funds education, advocacy, and research projects and meetings and has impacted more than 3 million people around the world.



## You are the key

- Educational lectures with world-renowned physicians and clinicians
- Fund targeted research projects and research endowment
- Expand International Patient Registry
- Provide free educational lecture videos and information on our website
- In-person and virtual support meetings
- Develop new and expand existing programs to spread awareness
- Advocate for federal research funding
- Establish regional chapters



## About the disorders

**Chiari I malformation (kee-AR-ee)** is a congenital or acquired (rare) abnormality in which the back compartment of the skull is too small, resulting in crowding of nerve tissues. As a result, the lower part of the cerebellum, called the cerebellar tonsils, hangs down through the opening at the bottom of the skull, preventing cerebrospinal fluid (CSF) from flowing freely into the spinal canal as it does normally.

**Syringomyelia (seer-in-go-my-EEL-ya)** (SM) occurs when a cavity, or syrinx, is formed inside the spinal cord from a build-up of fluid, which results from a blockage, either from a Chiari, spinal trauma, tumor, or other cause. Syringomyelia can cause stretching and, eventually, permanent injury to nerve fibers.



## International patient registry

Join the growing number of patients and caregivers in our registry.

[bobbyjonescsf.org/keytoacure](http://bobbyjonescsf.org/keytoacure)

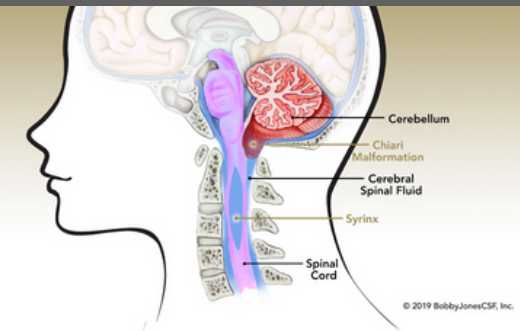


## Diagnosis & treatment

An MRI of the brain and spine can definitively show if a patient has CM, SM or another abnormality.

Currently, the only effective treatment is surgery. The decision to proceed with surgery should be carefully based on symptoms and neurological findings. Surgical decisions should be made only after consulting qualified physician(s).

### CHIARI & SYRINGOMYELIA



## Signs and symptoms

### Chiari Malformation

Headache, imbalance, weakness in limbs, choking, dizziness, ringing in the ears, neck pain

### Syringomyelia

Numbness, tingling, pain, weakness

CM and SM can bring on other neurological symptoms that may overlap with other diagnoses.