

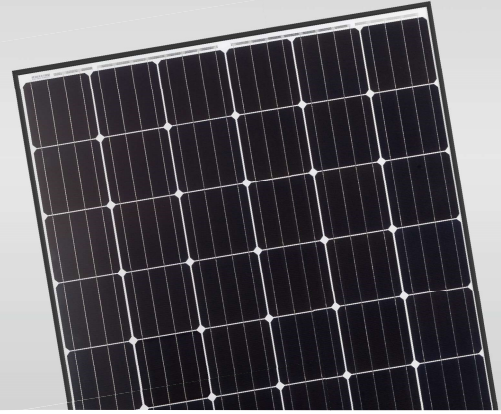
# Eagle PERC 60 280-300 Watt MONOCRYSTALLINE MODULE

\*1500V Available

Positive power tolerance of 0 ~+3%



PERC



## KEY FEATURES



### High Voltage

1000V standard; 1500V option lowers BOS costs and yields better LCOE



### Innovative Solar Cells

Four busbar cell technology improves module efficiency



### PID-Free

World's 1st PID-Free module at 85°C /85%RH



### Low-Light Performance

New glass technology improves light absorption and retention



### Strength and Durability

Certified for high snow (5400Pa) and wind (2400Pa) loads

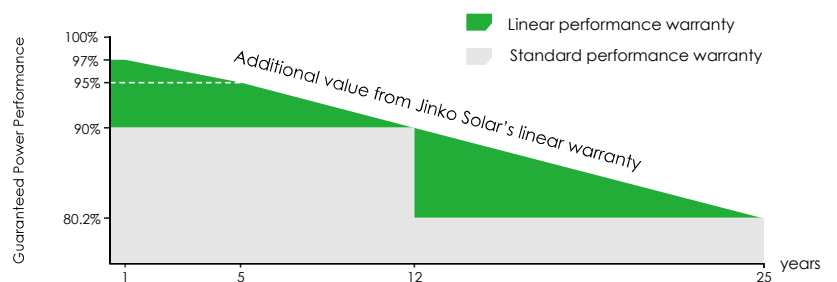


### Weather Resistance

Certified for salt mist and ammonia resistance

## LINEAR PERFORMANCE WARRANTY

10 Year Product Warranty • 25 Year Linear Power Warranty



- ISO9001:2008 Quality Standards
- ISO14001:2004 Environmental Standards
- OHSAS18001 Occupational Health & Safety Standards

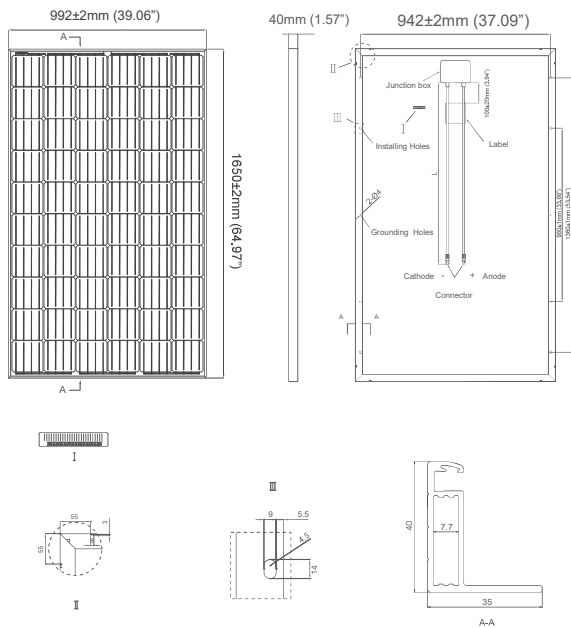
Nomenclature:

JKM300M - 60

Code	Frame/Backsheet	Code	Certification
null	Black/White	null	1000V
B	Black/Black	V	1500V



## Engineering Drawings

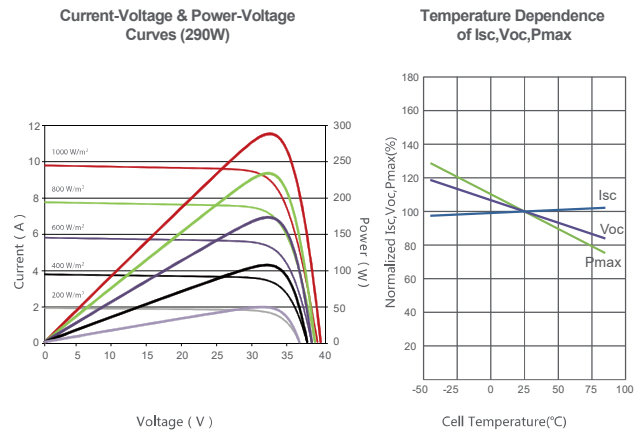


## Packaging Configurations

( Two boxes = One pallet )

26pcs/ box , 52pcs/pallet, 728 pcs/40'HQ Container

## Electrical Performance & Temperature Dependence



## Mechanical Characteristics

Cell Type	Mono-crystalline PERC 156×156mm (6 inch)
No. of cells	60 (6×10)
Dimensions	1650×992×40mm (64.97×39.06×1.57 inch)
Weight	19.0 kg (41.9 lbs.)
Front Glass	3.2mm, High Transmission, Low Iron, AR Coating Tempered Glass
Frame	Anodized Aluminium Alloy
Junction Box	IP67 Rated
Output Cables	12 AWG, Length:900mm (35.43 inch)
Fire Type	Type 1

## SPECIFICATIONS

Module Type	JKM280M-60-V		JKM285M-60-V		JKM290M-60-V		JKM295M-60-V		JKM300M-60-V	
	STC	NOCT	STC	NOCT	STC	NOCT	STC	NOCT	STC	NOCT
Maximum Power (Pmax)	280Wp	209Wp	285Wp	212Wp	290Wp	216Wp	295Wp	224Wp	300Wp	227Wp
	31.8V	29.7V	32V	29.9V	32.2V	30.2V	32.4V	30.6V	32.6V	30.8V
Maximum Power Current (Imp)	8.81A	7.01A	8.9A	7.12A	9.02A	7.15A	9.1A	7.32A	9.3A	7.4A
	38.6V	36.2V	38.7V	36.4V	39.5V	36.6V	39.7V	37V	40.3V	37.2V
Short-circuit Current (Isc)	9.49A	7.62A	9.51A	7.72A	9.55A	7.81A	9.61A	8.01A	9.83A	8.12A
	17.11%		17.41%		17.72%		18.02%		18.33%	
Operating Temperature(°C)	-40°C~+85°C									
Maximum system voltage	1500VDC(UL)									
Maximum series fuse rating	15A									
Power tolerance	0~+3%									
Temperature coefficients of Pmax	-0.39%/°C									
Temperature coefficients of Voc	-0.29%/°C									
Temperature coefficients of Isc	0.05%/°C									
Nominal operating cell temperature (NOCT)	45±2°C									

\* STC: Irradiance 1000W/m<sup>2</sup> Cell Temperature 25°C AM=1.5

NOCT: Irradiance 800W/m<sup>2</sup> Ambient Temperature 20°C AM=1.5 Wind Speed 1m/s

\* Power measurement tolerance: ± 3%

CAUTION: READ SAFETY AND INSTALLATION INSTRUCTIONS BEFORE USING THE PRODUCT.

© Jinko Solar Co., Ltd. All rights reserved specifications included in this datasheet are subject to change without notice.  
US-MKT-300M-60-V\_v1.0\_rev2017